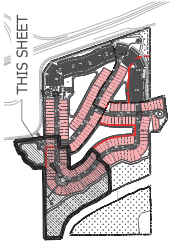
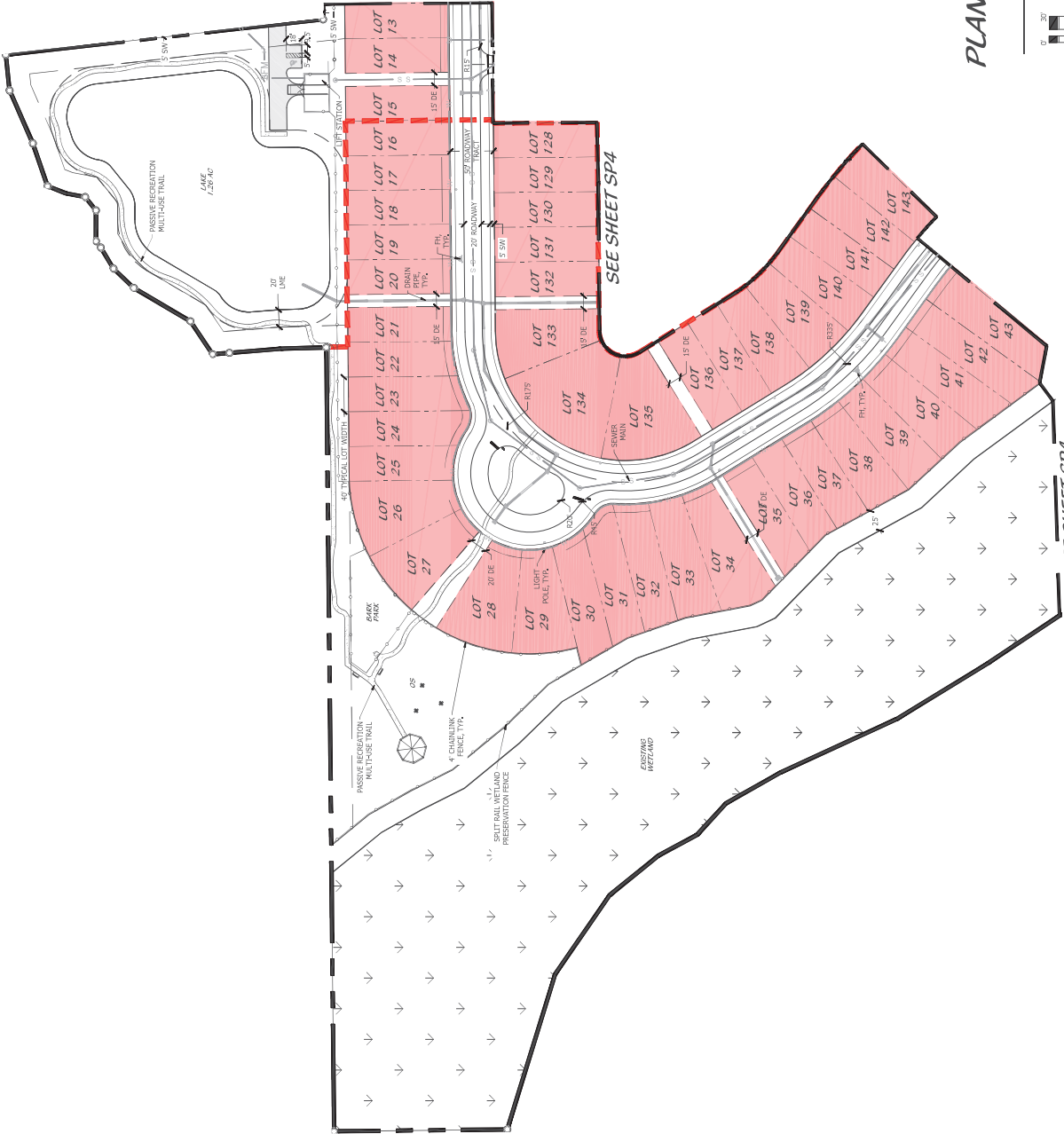


KEY MAP



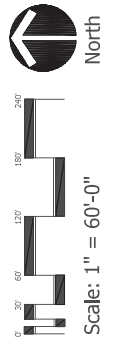
SEE SHEET SP3



SEE SHEET SP4

SEE SHEET SP4

PLANNED DEVELOPMENT SITE PLAN



Scale: 1" = 60'-0"



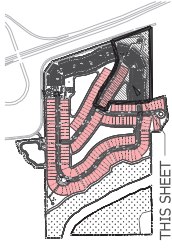
Cotleur & Hearing
Landscape Architects
and Planning Consultants
1834 Commerce Lane
Suite 1
Fort Pierce, Florida 34949
www.cotleurhearing.com
Tel: LC-2600535

Gordy Creek
Fort Pierce, Florida

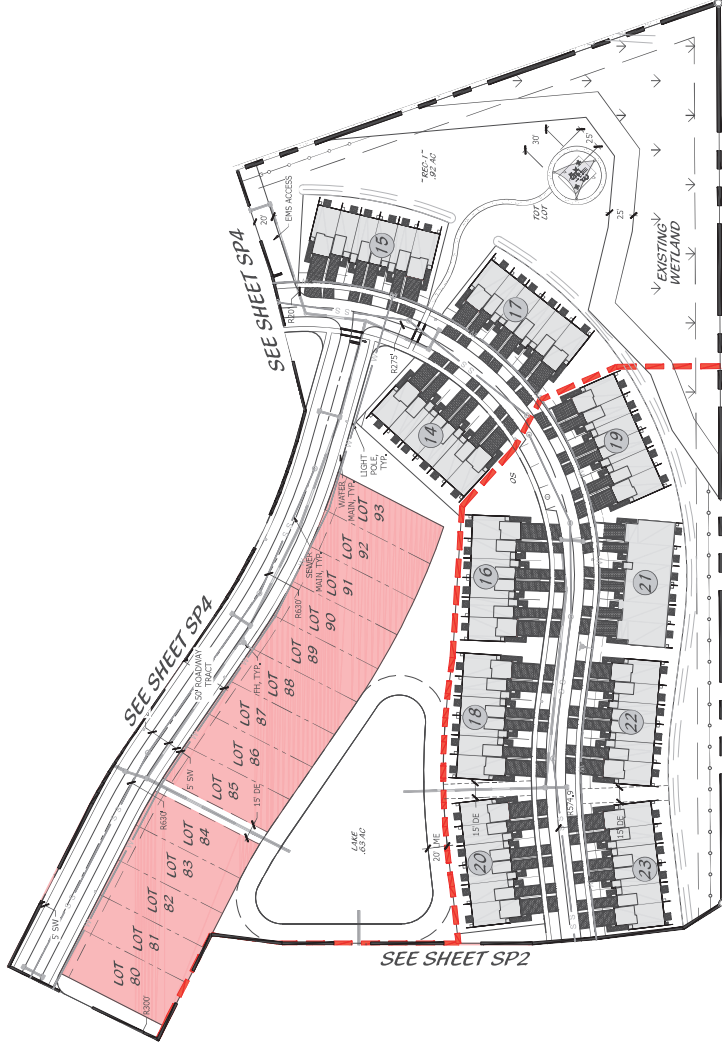
DESIGNED	_____
PREPARED	_____
APPROVED	_____
DATE	_____
PROJECT NUMBER	_____
LOT	_____
REVISION	_____

SHEET SP2 OF 7
COTLEUR & HEARING, INC.

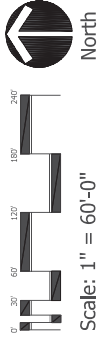
KEY MAP



THIS SHEET



PLANNED DEVELOPMENT
SITE PLAN



Scale: 1" = 60'-0"



Cotleur & Hearing
Landscape Architects
Landscape Planning Consultants
1834 Commerce Lane
Suite 1
Fort Pierce, Florida 34949
888.747.4338 • Fax 781.747.1377
www.cotleurhearing.com
Lic# LC-26000535

Gordy Creek
Fort Pierce, Florida

DESIGNED	_____
DRAWN	_____
APPROVED	_____
SHEET NUMBER	7
TOTAL SHEETS	11
DATE	_____
PROJECT	_____

SHEET SP5 OF 7
COTLEUR HEARING, INC.

This plan was prepared by the undersigned in accordance with the Florida Statutes, Chapter 626, and the Florida Board of Landscape Architecture, Chapter 626.001, F.S. The undersigned is not responsible for the accuracy of the information provided by the client.



Cofeur & Hearing
Landscape Architects
Land Planners
Environmental Consultants
354 Commerce Lane
Jupiter, Florida 33459
561.747.1177
info@cofeurandhearing.com
Lic# LC-98000535

Gordy Creek
Fort Pierce, Florida

DESIGNED	
DRAWN	
APPROVED	
JOB NUMBER	250711
DATE	12/20/21
REVISIONS	

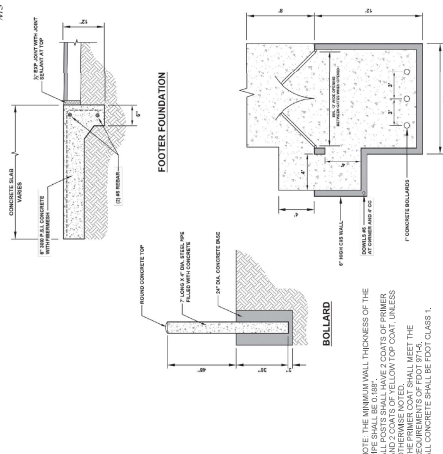
SHEET **SP7** OF **7**

SPLIT RAIL FENCE DETAIL



NOTE:
1) DEVELOPER TO CHOOSE MATERIAL AT TIME OF CONSTRUCTION
2) COLOR MAY VARY BASED UPON AVAILABILITY AND DEVELOPER PREFERENCES.

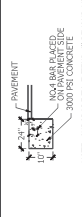
DUMPSTER DETAIL



D CURB DETAIL



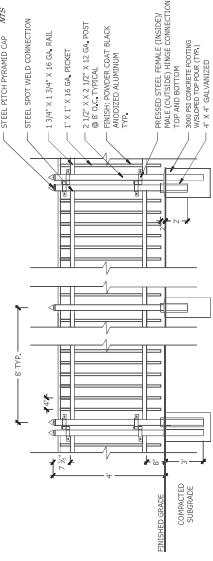
HEADER CURB DETAIL



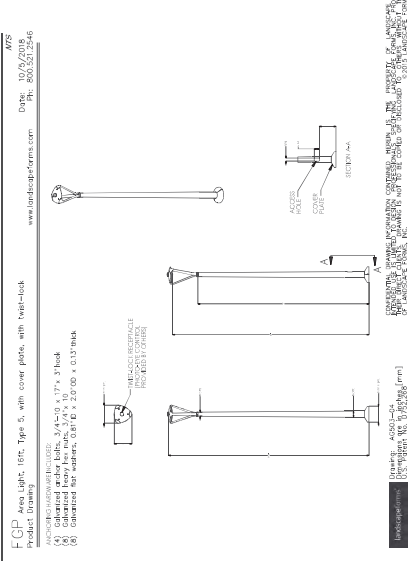
NOTE: SUBGRADE TO EXTEND 6" BEYOND HEADER CURB

SITE DETAILS

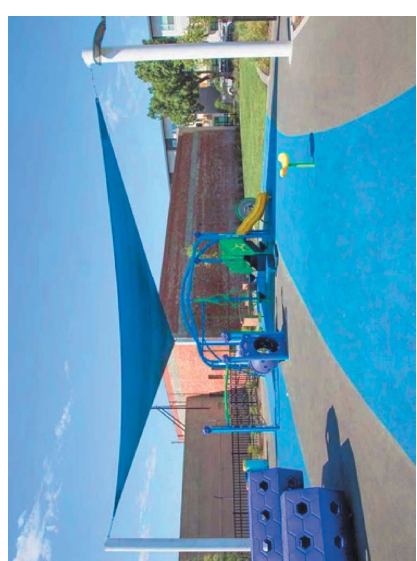
DECORATIVE FENCE DETAIL



LIGHTING DETAIL

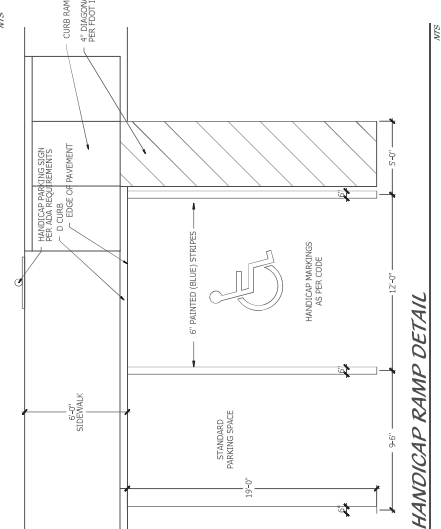


TOT LOT SHADE SAIL DETAIL

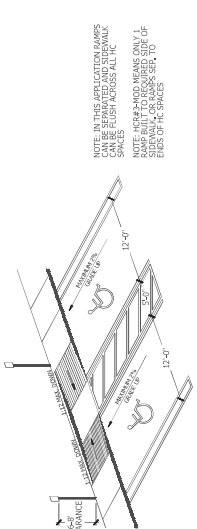


NOTE: SHADE STRUCTURE CUSTOMER SPECIFIC. ALL DIMENSIONS TO BE DETERMINED BY CONTRACTOR.

STANDARD AND HANDICAP PARKING DETAIL



HANDICAP RAMP DETAIL



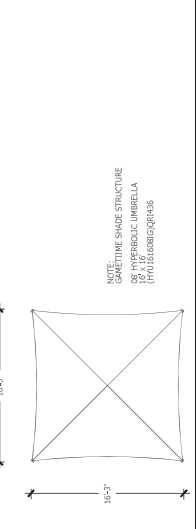
HANDICAP SIGN DETAIL



HANDICAP SYMBOL DETAIL



SHADE STRUCTURE DETAIL



NOTE:
SHADE STRUCTURE IS HYPERBOLIC UMBRELLA TYPE. DIMENSIONS TO BE DETERMINED BY CONTRACTOR.