

Litterick Landscape Architecture

2740 SW Martin Downs Blvd. #199
Palm City, FL 34990
561-719-3876
Jason.LA1677@yahoo.com

Project Name

Sunset Gardens

Ft. Pierce, Florida

4945 Edwards Road

Landscape Architect of Record



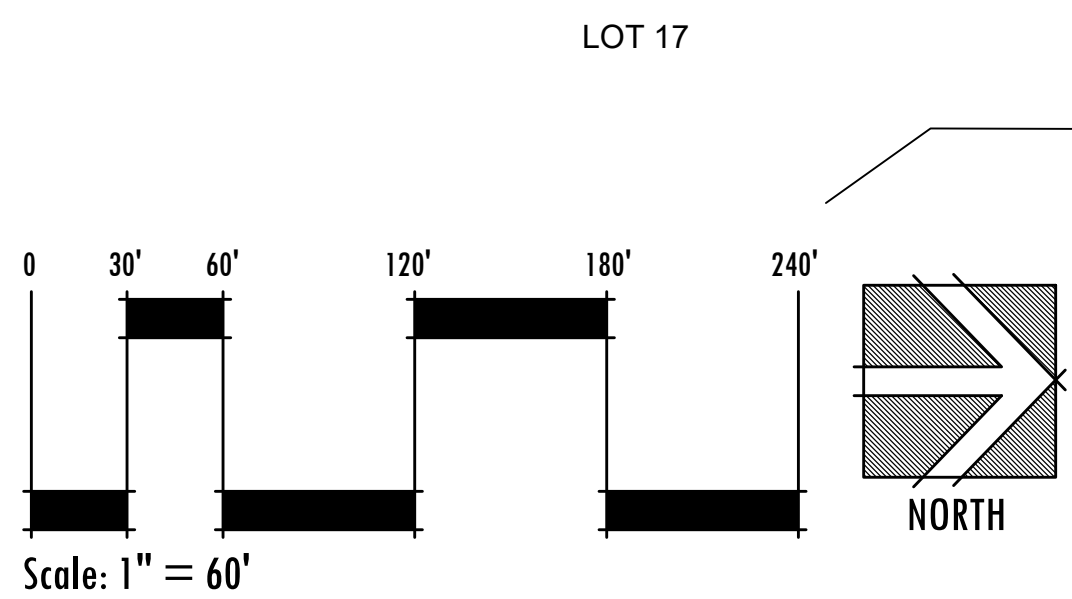
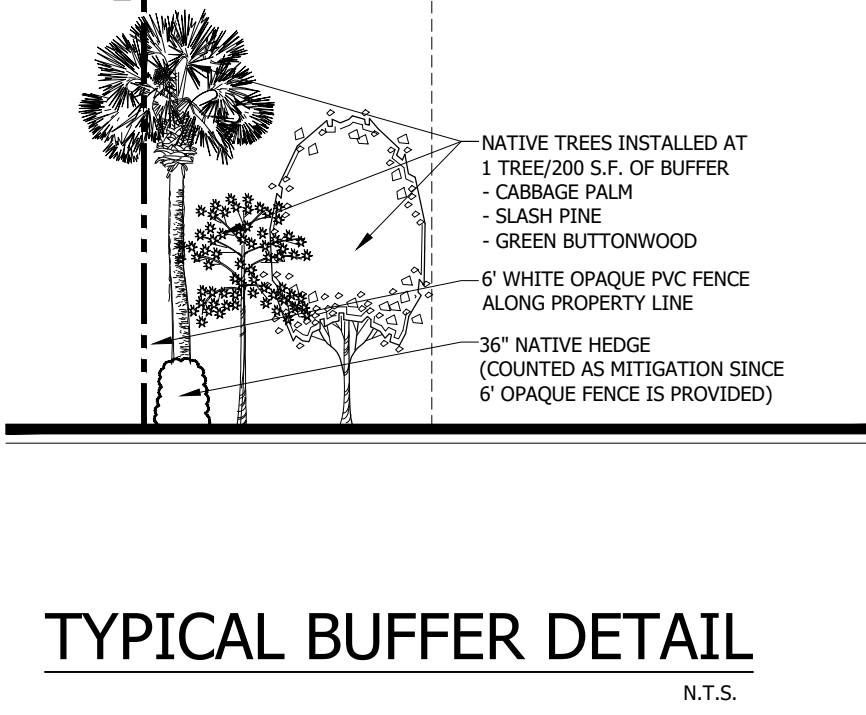
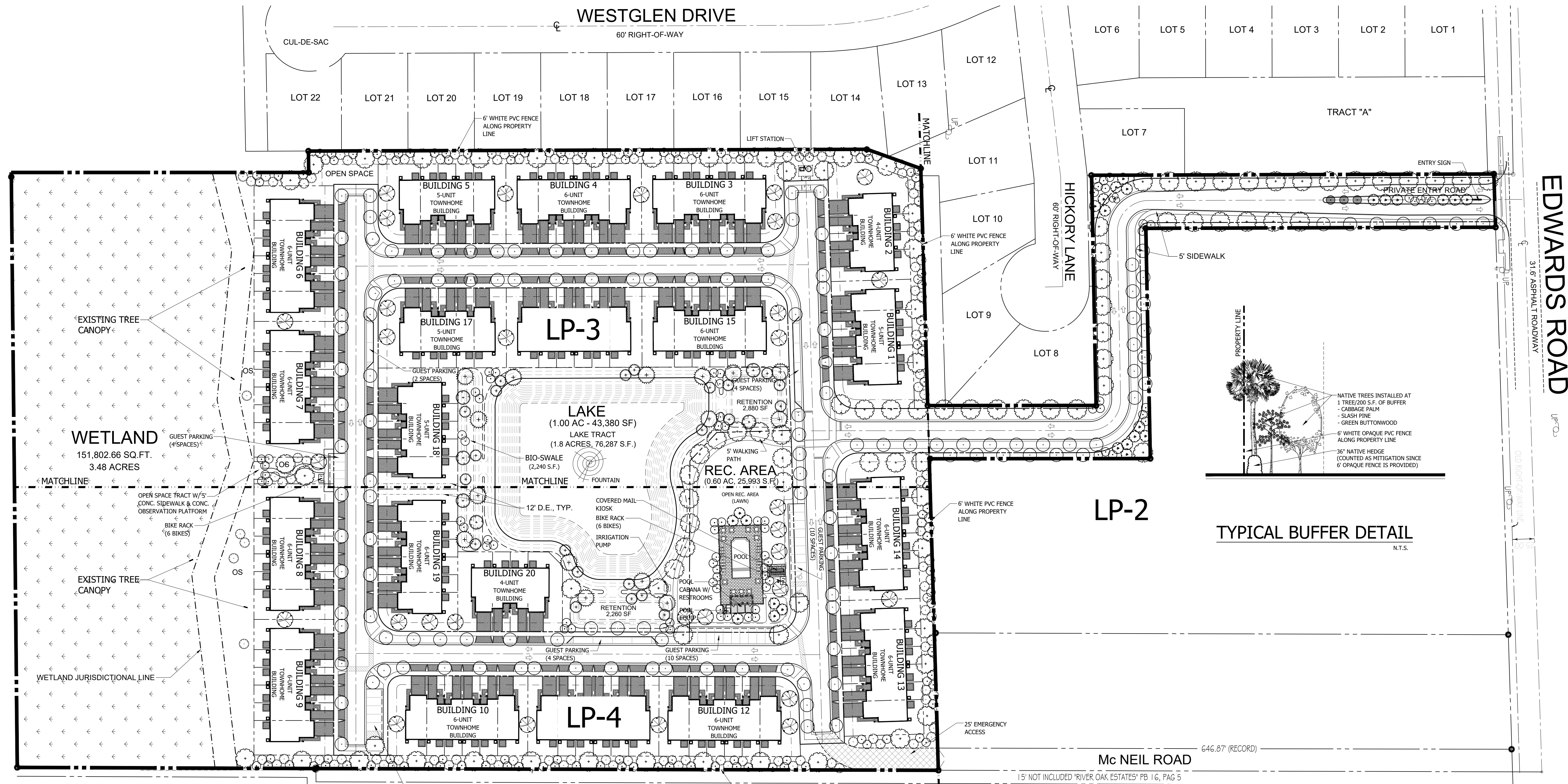
Jason M. Litterick, RLA (LA0001677)

Scale: 1" = 60'-0"

Designed: JML
Drawn: JML
Approved: JML
Date: 2/14/25
Job no.
Revisions:

Sheet No.

LP-1



DRAWING INDEX:

LP-1	OVERALL LANDSCAPE PLAN & LANDSCAPE DATA
LP-2 - LP-4	DETAIL LANDSCAPE PLANS
LP-5	TYPICAL UNIT LANDSCAPE PLANS
LP-6	LANDSCAPE SPECIFICATIONS & PLANTING DETAILS

Overall Landscape Plan

- ### TREE LEGEND
- GREEN BUTTWOOD (CONOCARPUS ERECTUS)
 - DAHOON HOLLY (ILEX CASSINE)
 - SOUTHERN MAGNOLIA (MAGNOLIA GRANDIFLORA)
 - BALD CYPRESS (TAXODIUM DISTICHUM)
 - RED MAPLE (ACRE RUBRUM)
 - S. FLA. SLASH PINE (PINUS ELLIOTTII 'DENSA')
 - CABBAGE PALM (SABAL PALMETTO)
 - CHINESE FAN PALM (LIVISTONA CHINENSIS)

SEE SHEETS LP-2 THRU LP-4 FOR DETAIL LANDSCAPE PLANS
SEE SHEETS LP-5 FOR TYPICAL UNIT LANDSCAPE PLANS
REFER TO SHEET LP-6 FOR PLANT LIST, PLANTING DETAILS & LANDSCAPE SPECIFICATIONS

TREES REQUIRED:
WEST PERIMETER LANDSCAPE STRIP (ABUTTING OTHER PROPERTIES) = 802 L.F. X 15' WIDE 12,030 S.F. DIV. BY 200 = 61 TREES
EAST PERIMETER LANDSCAPE STRIP (ABUTTING OTHER PROPERTIES) = 701 L.F. X 15' WIDE 10,515 S.F. DIV. BY 200 = 53 TREES
NORTH PERIMETER LANDSCAPE STRIP (ABUTTING OTHER PROPERTIES) = 619 L.F. X 15' WIDE 9,285 S.F. DIV. BY 200 = 47 TREES
ENTRY DRIVE PERIMETER LANDSCAPE STRIP (ABUTTING OTHER PROPERTIES) = 1,808 L.F. X 10' WIDE 18,080 S.F. DIV. BY 200 = 91 TREES
INTERIOR VEHICULAR USE AREAS = 76,378 S.F. 76,378 S.F. / 15 S.F. = 5,092 S.F. REQUIRED PLANTING AREA / 100 = 51 51 INTERIOR VUA TREES

TOTAL TREES REQUIRED: 303 TREES

SHRUBS REQUIRED:
WEST PERIMETER LANDSCAPE STRIP (ABUTTING OTHER PROPERTIES) = 802 L.F. CONTINUOUS HEDGE @ 36" O.C. = 268 SHRUBS
EAST PERIMETER LANDSCAPE STRIP (ABUTTING OTHER PROPERTIES) = 701 L.F. CONTINUOUS HEDGE @ 36" O.C. = 234 SHRUBS
NORTH PERIMETER LANDSCAPE STRIP (ABUTTING OTHER PROPERTIES) = 619 L.F. CONTINUOUS HEDGE @ 36" O.C. = 207 SHRUBS
ENTRY DRIVE PERIMETER LANDSCAPE STRIP (ABUTTING OTHER PROPERTIES) = 1,808 L.F. CONTINUOUS HEDGE @ 36" O.C. = 603 SHRUBS

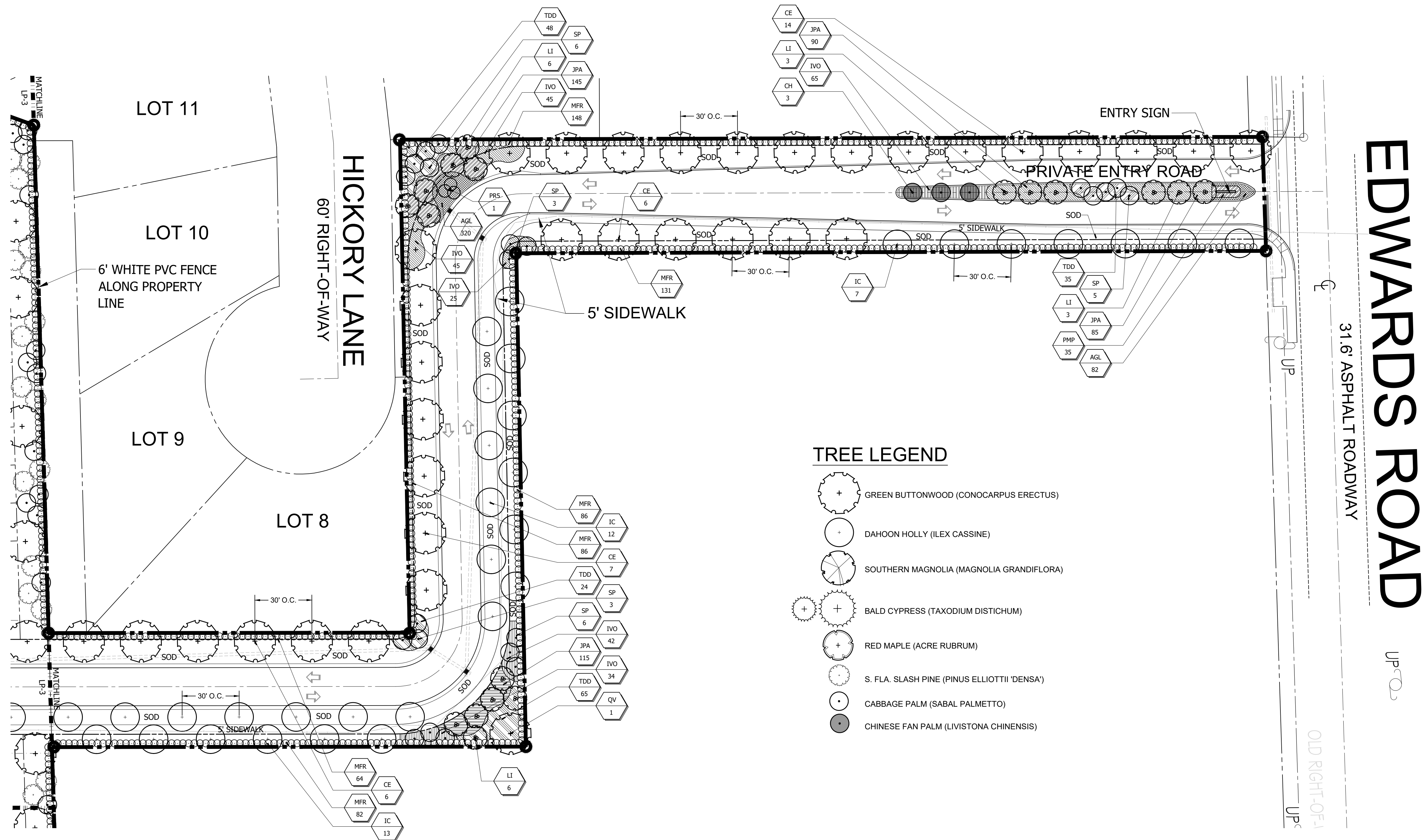
TOTAL SHRUBS REQUIRED: 1,312 SHRUBS

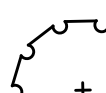
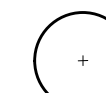

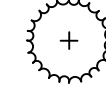


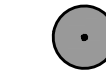

TREES PROVIDED:
WEST PERIMETER LANDSCAPE STRIP 63 TREES
EAST PERIMETER LANDSCAPE STRIP 53 TREES
NORTH PERIMETER LANDSCAPE STRIP 49 TREES
ENTRY DRIVE PERIMETER LANDSCAPE STRIP 92 TREES
INTERIOR VEHICULAR USE AREAS - 76,378 S.F. 108 TREES

TOTAL TREES PROVIDED: *365 TREES

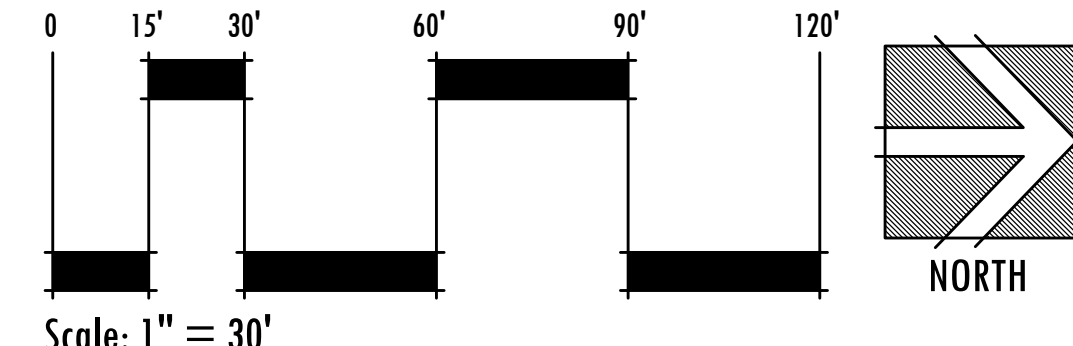
SHRUBS PROVIDED:
WEST PERIMETER LANDSCAPE STRIP 268 SHRUBS
EAST PERIMETER LANDSCAPE STRIP 234 SHRUBS
NORTH PERIMETER LANDSCAPE STRIP 207 SHRUBS
ENTRY DRIVE PERIMETER LANDSCAPE STRIP 603 SHRUBS

TOTAL SHRUBS PROVIDED: 1,312 SHRUBS

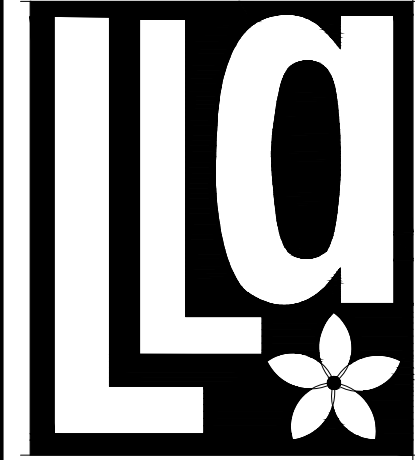


- TREE LEGEND**
-  GREEN BUTTWOOD (CONOCARPUS ERECTUS)
 -  DAHOON HOLLY (ILEX CASSINE)
 -  SOUTHERN MAGNOLIA (MAGNOLIA GRANDIFLORA)
 -  BALD CYPRESS (TAXODIUM DISTICHUM)
 -  RED MAPLE (ACRE RUBRUM)
 -  S. FLA. SLASH PINE (PINUS ELLIOTTII 'DENSEA')
 -  CABBAGE PALM (SABAL PALMETTO)
 -  CHINESE FAN PALM (LIVISTONA CHINENSIS)

Landscape Plan



REFER TO SHEET LP-6 FOR PLANT LIST, PLANTING DETAILS & LANDSCAPE SPECIFICATIONS



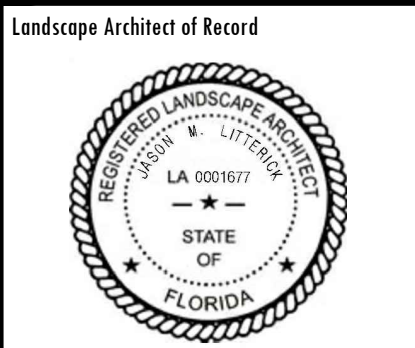
Litterick Landscape Architecture

2740 SW Martin Downs Blvd. #199
Palm City, FL 34990
561-719-3876
JasonLA1677@yahoo.com

Project Name

Sunset Gardens

4945 Edwards Road
Ft. Pierce, Florida

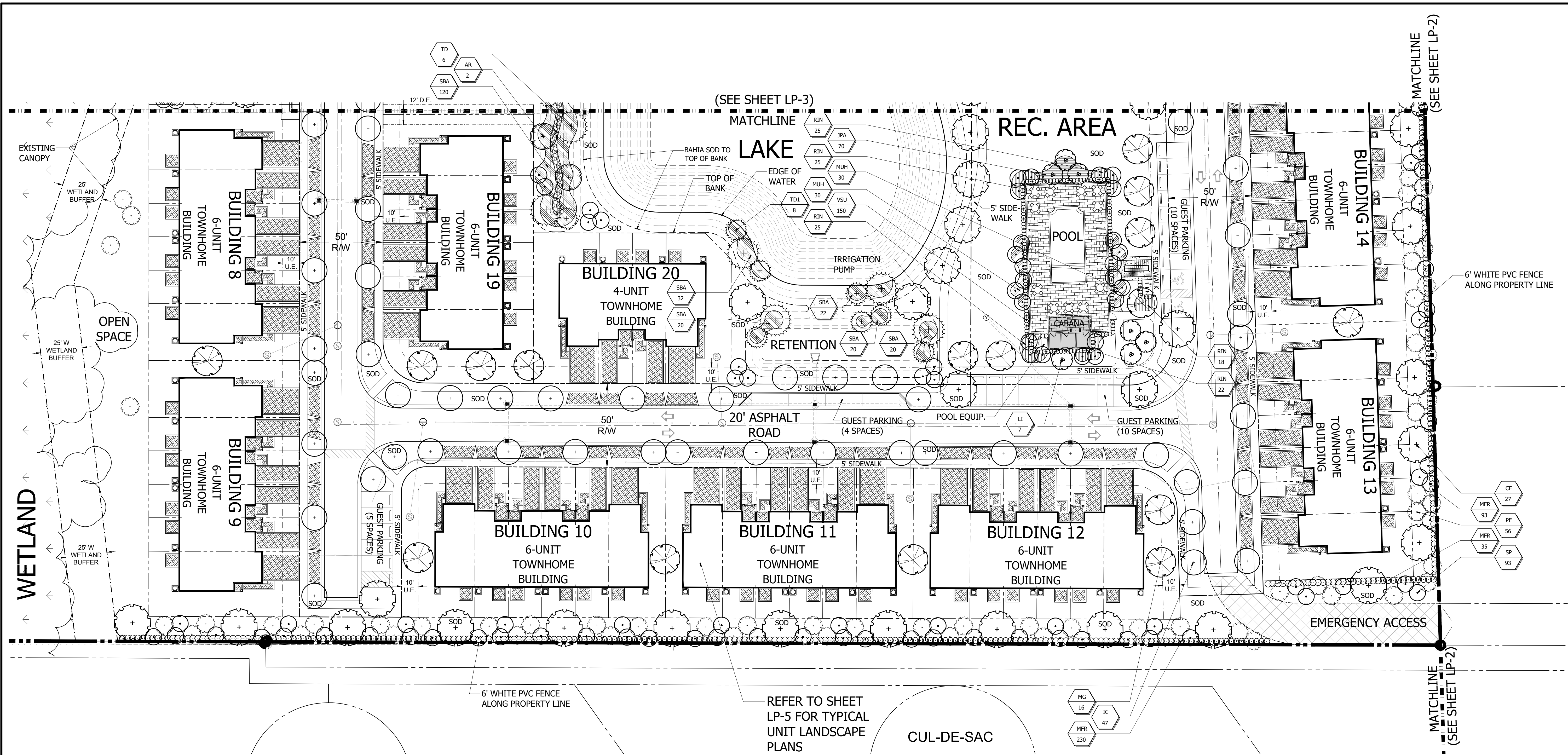


Jason M. Litterick, RLA (LA0001677)

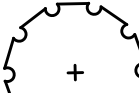
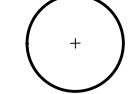

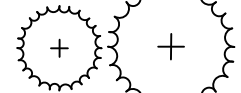

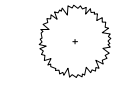
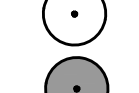

Scale: 1" = 30'-0"

Designed:	JML
Drawn:	JML
Approved:	JML
Date:	2/14/25
Job no.	
Revisions:	

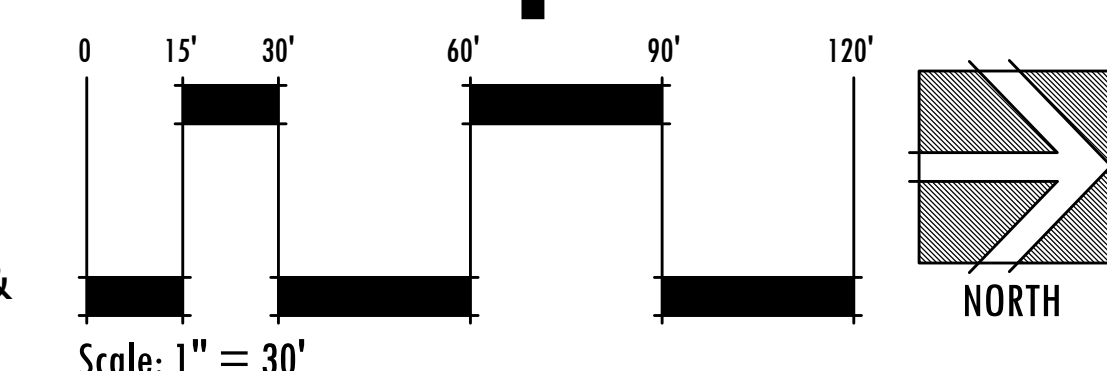
Sheet No.
LP-2



TREE LEGEND

-  GREEN BUTTONWOOD (CONOCARPUS ERECTUS)
-  DAHOON HOLLY (ILEX CASSINE)
-  SOUTHERN MAGNOLIA (MAGNOLIA GRANDIFLORA)
-  BALD CYPRESS (TAXODIUM DISTICHUM)
-  RED MAPLE (ACRE RUBRUM)
-  S. FLA. SLASH PINE (PINUS ELLIOTTII 'DENSE')
-  CABBAGE PALM (SABAL PALMETTO)
-  CHINESE FAN PALM (LIVISTONA CHINENSIS)

Landscape Plan



REFER TO SHEET LP-6 FOR PLANT LIST, PLANTING DETAILS & LANDSCAPE SPECIFICATIONS




Litterick Landscape Architecture
 2740 SW Martin Downs Blvd. #199
 Palm City, FL 34990
 561-719-3876
 JasonLA1677@yahoo.com

Project Name

Sunset Gardens

4945 Edwards Road
 Ft. Pierce, Florida

Landscape Architect of Record

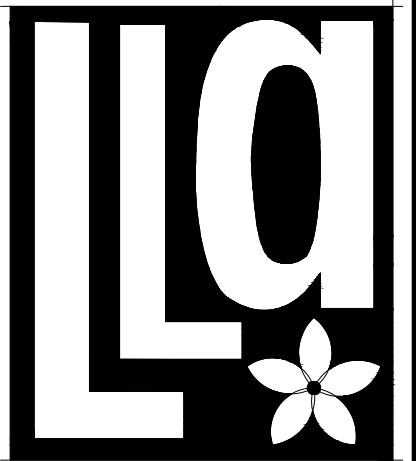


Jason M. Litterick, RLA
 (LA0001677)

Scale: 1" = 30'-0"

Designed:	JML
Drawn:	JML
Approved:	JML
Date:	2/14/25
Job no.	
Revisions:	

Sheet No.
LP-4

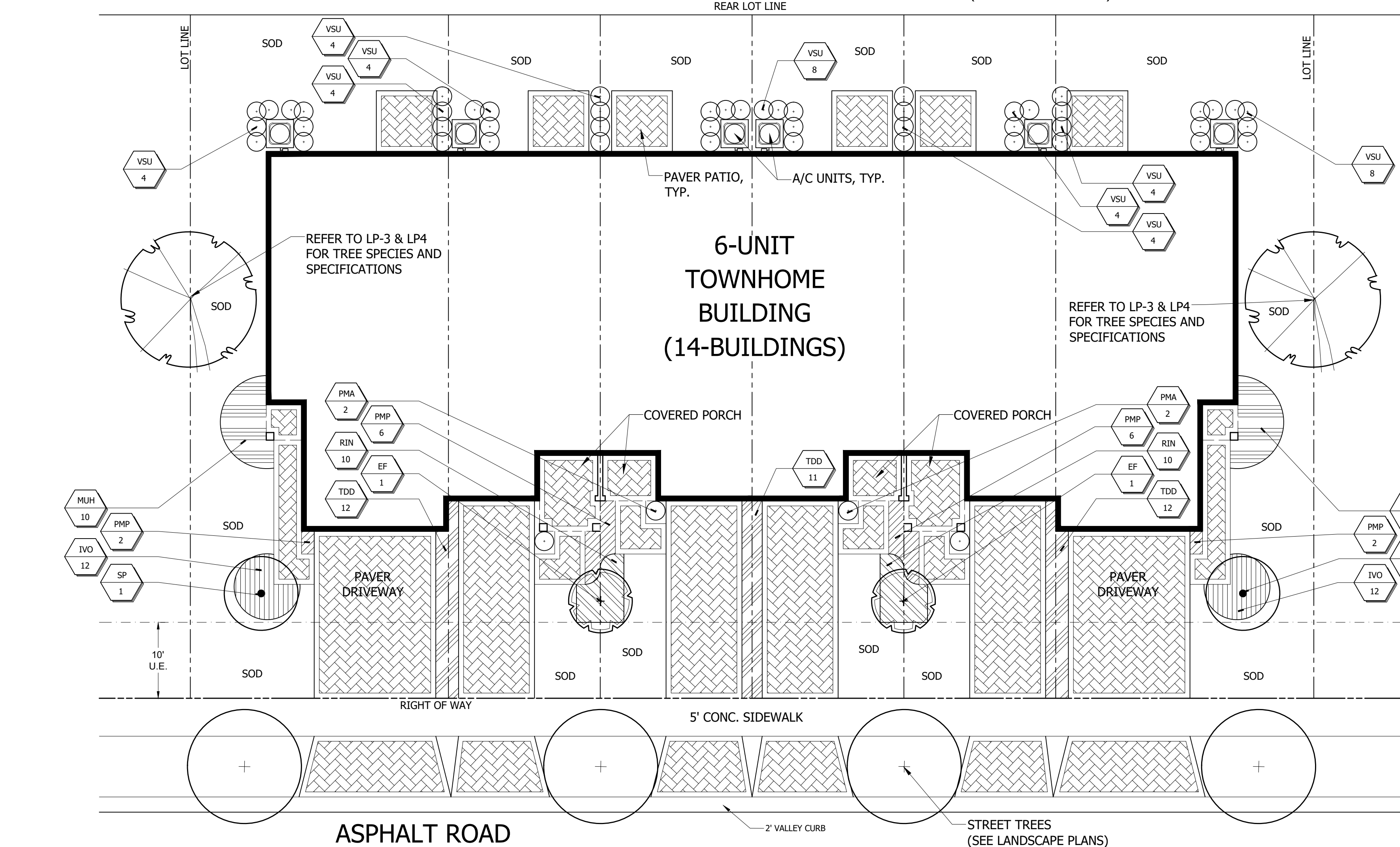
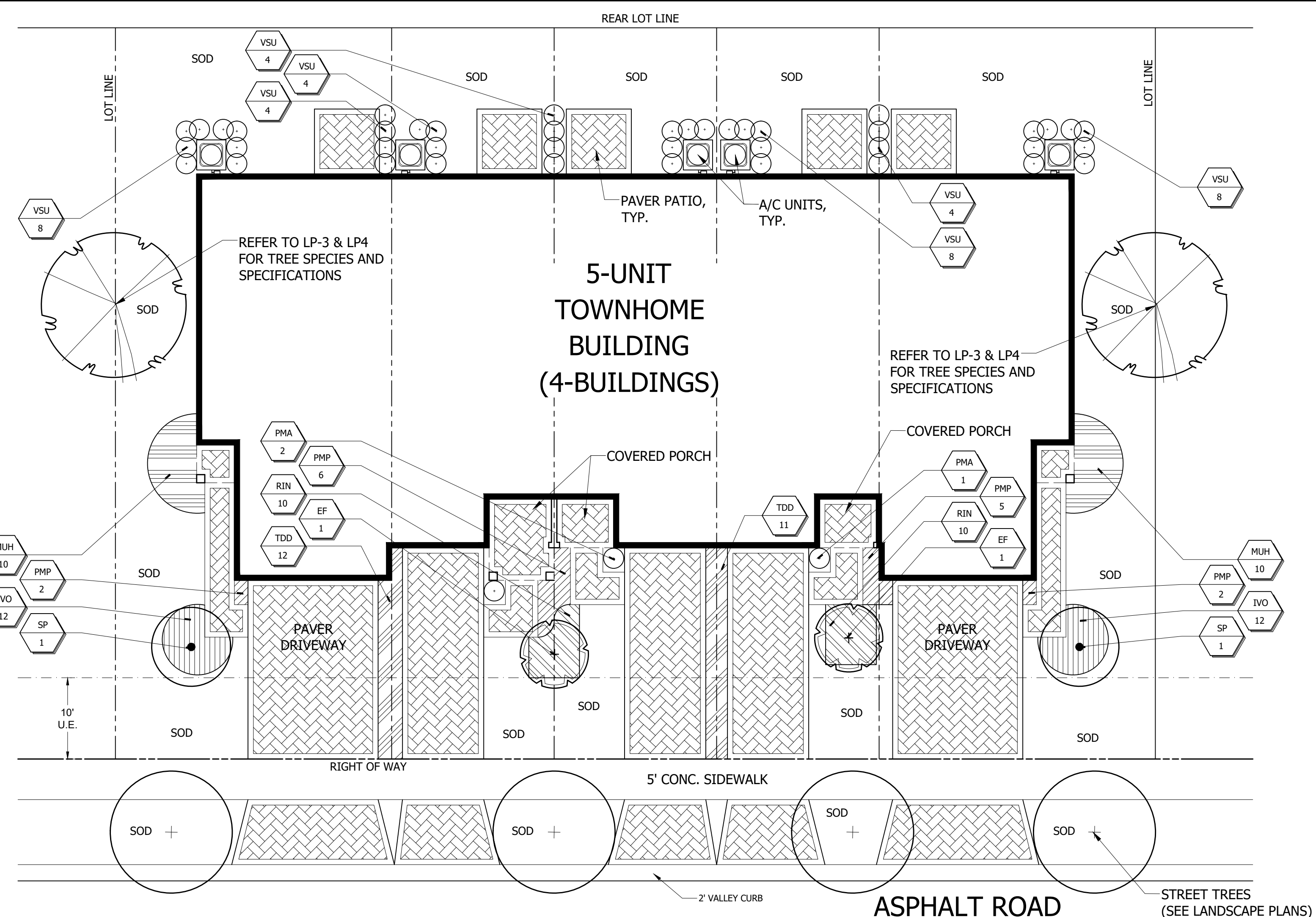
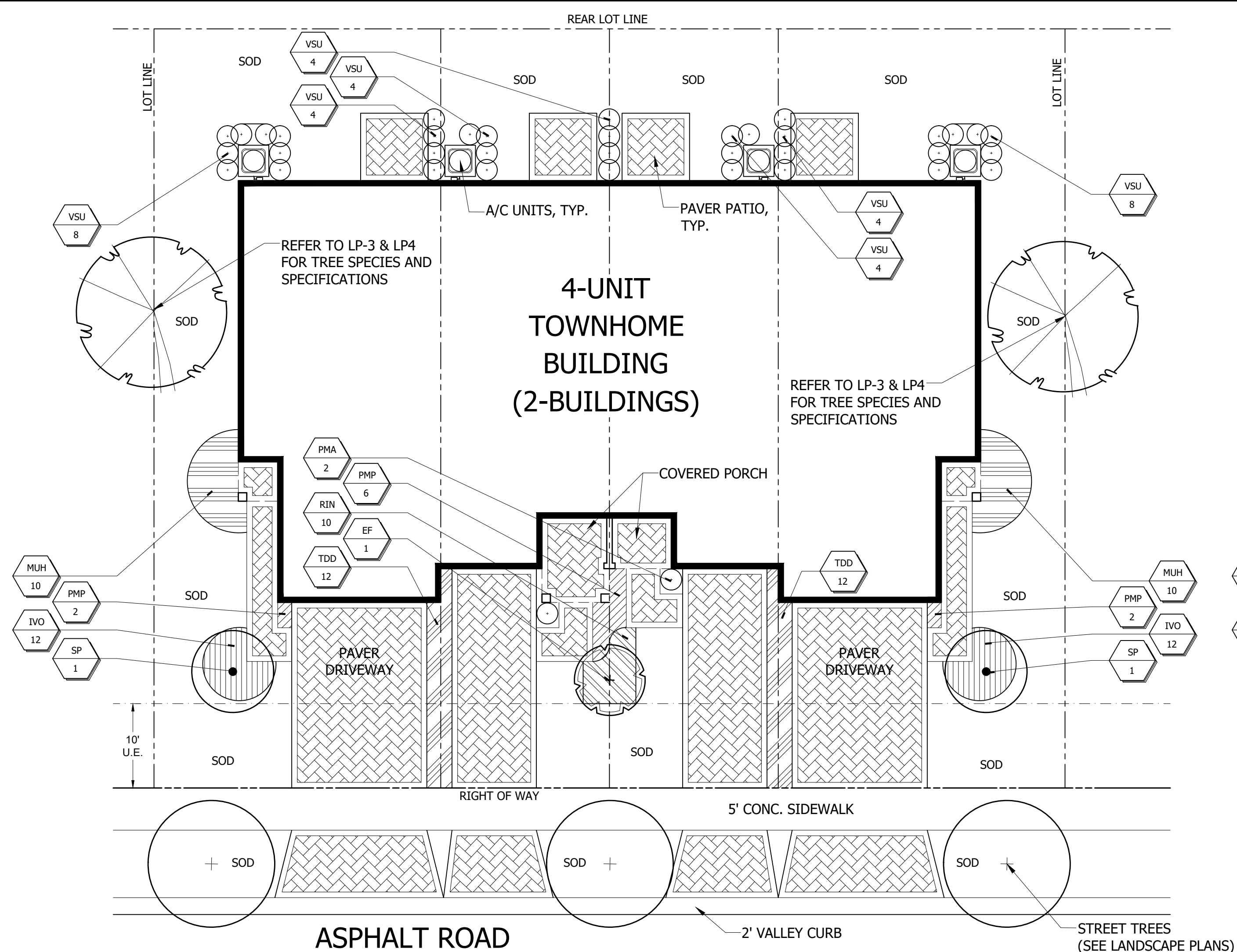


**Litterick
Landscape
Architecture**

2740 SW Martin Downs Blvd. #199
Palm City, FL 34990
561-719-3876
JasonLA1677@yahoo.com

Project Name

Sunset Gardens
Ft. Pierce, Florida
4945 Edwards Road



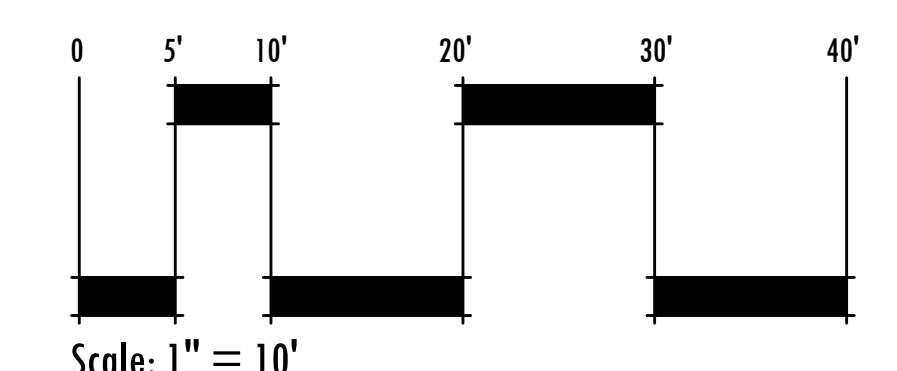
PLANT LIST (TYPICAL UNIT LANDSCAPE PLANS)

SYM	QTY.	BOTANICAL NAME	COMMON NAME	HEIGHT	SPR.	NOTES:
* V	EF 38	EUGENIA FOETIDA	SPANISH STOPPER	12' O.A.	5'	FULL & THICK, SINGLE TRUNK, TREE FORM
* V	SP 40	SABAL PALMETTO	CABBAGE PALM	10-18' C.T.	N/A	SLICK TRUNK, HURRICANE CUT, STAGGER HEIGHTS
TOTAL TREES PROVIDED: 51 TREES (38 TREES + 40 CABBAGE PALMS @ 3:1)						
SYM	QTY.	BOTANICAL NAME	COMMON NAME	SIZE	SPACING	NOTES:
* V	TDD 630	TRIPSACUM FLORIDANA	FLORIDA GAMA GRASS	#3, 16" O.A.	30" O.C.	FULL & THICK
V	PMA 72	PODOCARPUS MACROPHYLLUS	JAPANESE YEW	#7, 38" O.A.	24" O.C.	FULL & THICK
M	PMP 304	PODOCARPUS MACROPHYLLUS 'PRINGLES'	DWF. PODOCARPUS	#7, 16" X 16"	24" O.C.	FULL & THICK
M	RIN 1278	RAPHIOLEPIS INDICA	INDIAN HAWTHORN	#3, 16" X 16"	24" O.C.	FULL & THICK
M	JPA 1120	JUNIPERUS CHINENSIS 'PARSONII'	PARSON'S JUNIPER	#3, 16" SPD.	24" O.C.	FULL & THICK
* V	MUH 1170	MUHLENBERGIA CAPILARIS	MUHLY GRASS	#3, 18" O.A.	30" O.C.	FULL & THICK
M	VSU 1584	VIBURNUM SUSPENSUM	SANDANKWA VIBURNUM	#3, 24" O.A.	24" O.C.	FULL & THICK

* ASTERISK DENOTES NATIVE PLANT MATERIAL
 V INDICATES VERY DROUGHT TOLERANT PLANT MATERIAL
 M INDICATES MODERATELY DROUGHT TOLERANT PLANT MATERIAL
 SOD: ST. AUGUSTINE 'FLORITAM' (BAHIA WHERE NOTED)
 MULCH: 3" SHREDDED MELALEUCA MULCH (OR APPROVED RECYCLED MULCH) TO BE APPLIED TO ALL PLANTING BEDS.
 IRRIGATION NOTE:
 ALL NEW LANDSCAPE AREAS SHALL RECEIVE 100% OVERLAP COVERAGE FROM A FULLY AUTOMATIC IRRIGATION SYSTEM EQUIPPED WITH A RAIN SENSOR.
 IRRIGATION WATER SOURCE: LAKE & RECHARGE WELL.

REFER TO SHEET LP-6 FOR LANDSCAPE SPECIFICATION & PLANTING DETAILS

**Typical Unit
Landscape Plan**



Landscape Architect of Record



Jason M. Litterick, RLA
(LA0001677)

Scale: 1" = 10'-0"

Designed: JML
 Drawn: JML
 Approved: JML
 Date: 2/14/25
 Job no.
 Revisions:

Sheet No.

LP-5

PLANT LIST (LP-2 & LP-4)

NOTE: DOES NOT INCLUDE PLANTS SPECIFIED ON SHEET LP-5, TYPICAL UNIT LANDSCAPE PLAN

TREES & PALMS										
SYM	QTY	BOTANICAL NAME	COMMON NAME	HEIGHT	SPR	NOTES:				
*V PE	117	PINIS ELLIOTTI 'DENSA'	S. FLA. SLASH PINE	12' O.A., 2.5" DBH	5'	FULL & THICK, SINGLE TRUNK				
*V SP	195	SABAL PALMETTO	CABBAGE PALM	10-18' C.T.	N/A	SLICK TRUNK, HURRICANE CUT, STAGGER HEIGHTS				
*V MG	31	MAGNOLIA GRANDIFLORA 'D.D. BLANCHARD'	SOUTHERN MAGNOLIA	14' O.A., 3" DBH	4'	FULL & THICK TO GROUND				
*V TD	15	TAXODIUM DISTICHUM	BALD CYPRESS	8' O.A., 1.5" DBH	4'	FULL & THICK, SINGLE TRUNK				
*V TD1	22	TAXODIUM DISTICHUM	BALD CYPRESS	12' O.A., 2.5" DBH	5'	FULL & THICK, SINGLE TRUNK				
*V IC	137	DAHOON HOLLY	DAHOON HOLLY	12' O.A., 2.5" DBH	5'	FULL & THICK, SINGLE TRUNK				
*V CE	98	CONOCARPUS ERECTUS	GREEN BUTTWOOD	12' O.A., 2.5" DBH	5'	FULL & THICK				
M LI	25	LAGERSTROMIA INDICA 'MUSKOGEE'	CRAPE MYRTLE	12-14' O.A.	5'	FULL & THICK, MULTI-TRUNK, 5' C.T.				
M CH	3	LIVISTONA CHINENSIS	CHINESE FAN PALM	10' C.T.	N/A	FULL & THICK, MATCHED				
*V AR	6	ACER RUBRUM	RED MAPLE	12' O.A., 2.5" DBH	5'	FULL & THICK				
M PRS	1	PHOENIX ROEBELENI	PYGMY DATE PALM (5 STEM)	7-8' O.A.	N/A	FULL & THICK, 5 STEM SPECIMEN				

- A) # OF TREES PROVIDED: 436 TREES
- B) # OF PALMS PROVIDED: 198 PALMS = 66 TREES (3 PALMS = 1 TREE)
- C) # OF SMALL TREES PROVIDED: 15 SM. TREES = 5 TREES (3 SM. TREES = 1 TREE)
- D) # OF LOT TREES PROVIDED (LP-5): 51 TREES
- E) TOTAL # OF "TREES" PROVIDED (A + B + C + D): 558 TREES
- F) TOTAL # OF REQUIRED "TREES" (PER LP-1): 303 TREES
- G) ADDITIONAL "TREES" PROVIDED (C - D): *255 TREES
- *THE ADDITIONAL 255 TREES OR 637.5" (255 X 2.5"/TREE) TO BE CONSIDERED MITIGATION (SEE TD-1)

SHRUBS & GROUNDCOVERS									
SYM	QTY	BOTANICAL NAME	COMMON NAME	SIZE	SPACING	NOTES:			
*V TDD	172	TRIPSACUM FLORIDANA	FLORIDA GAMA GRASS	#3, 16" O.A.	30" O.C.	FULL & THICK			
*V SBA	634	SPARTINA BAKERI	SAND CORN GRASS	#3, 20" O.A.	36" O.C.	FULL & THICK			
M PMP	35	PODOCARPUS MACROPHYLLUS 'PRINGLES'	DWARF PODOCARPUS	#7, 16" X 16"	24" O.C.	FULL & THICK			
*V IVO	256	ILEX VOMITORIA	DWARF YALPON HOLLY	#3, 14" X 14"	24" O.C.	FULL & THICK			
*V MFR	1349	MYRTICANTHES FRAGRANS	SIMPSON STOPPER	#7, 36" O.A.	36" O.C.	FULL & THICK			
*V MUH	96	MUHLENBERGIA CAPILLARIS	MUHL Y GRASS	#3, 18" O.A.	30" O.C.	FULL & THICK			
M VSU	100	VIOLARIA SPENSNUM	SANDANKVA VIBURNUM	#3, 24" O.A.	24" O.C.	FULL & THICK			
M AGL	402	ARACHIS GLABRA	PERENNIAL PEANUT	#3, 12" SPD.	12" O.C.	FULL & THICK			
M RIN	115	RAPHIOLEPIS INDICA	INDIAN HAWTHORN	#3, 16" X 16"	24" O.C.	FULL & THICK			
M JPA	505	JUNIPERUS CHINENSIS 'PARSONI'	PARSON'S JUNIPER	#3, 16" SPD.	24" O.C.	FULL & THICK			

* ASTERISK DENOTES NATIVE PLANT MATERIAL
 V INDICATES VERY DROUGHT TOLERANT PLANT MATERIAL
 M INDICATES MODERATELY DROUGHT TOLERANT PLANT MATERIAL

SOD: ST. AUGUSTINE 'FLORITAM' (BAHIA AS NOTED ON PLANS, RETENTION BANKS, OPEN SPACES & AT BOTTOM OF DRY RETENTION AREAS)
 MULCH: 3" SHREDDED MELALEUCA MULCH (OR APPROVED RECYCLED MULCH) TO BE APPLIED TO ALL PLANTING BEDS.

IRRIGATION NOTE:
 ALL NEW LANDSCAPE AREAS SHALL BE RECEIVE 100% OVERLAP COVERAGE FROM A FULLY AUTOMATIC IRRIGATION SYSTEM EQUIPPED WITH A RAIN SENSOR.
 IRRIGATION WATER SOURCE: LAKE AND RECHARGE WELL.
 NATIVE TREES PROVIDED: 85%
 NATIVE SHRUBS & GROUNDCOVERS PROVIDED: 75%

LANDSCAPE NOTES

- ALL PLANT MATERIAL SHALL BE FLORIDA NUMBER 1 OR BETTER AS DEFINED BY THE DIVISION OF PLANT INDUSTRY "GRADES AND STANDARDS" LATEST EDITION.
- ALL LANDSCAPE SHALL CONFORM TO THE REQUIREMENTS OF THE CITY OF FT. PIERCE CODE.
- THE LANDSCAPE CONTRACTOR SHALL NOT MAKE ANY SUBSTITUTIONS CHANGES WITHOUT THE AUTHORIZATION OF THE CITY OF FT. PIERCE, THE OWNER, AND THE LANDSCAPE ARCHITECT.
- THE LANDSCAPE CONTRACTOR SHALL REVIEW THE PROJECT DRAINAGE AND UTILITY PLANS PRIOR TO CONSTRUCTION AND AVOID ALL CONFLICTS. THE LANDSCAPE CONTRACTOR SHALL VERIFY THE LOCATION OF ALL UNDERGROUND UTILITIES PRIOR TO COMMENCING WORK.
- THE LANDSCAPE CONTRACTOR SHALL BE RESPONSIBLE FOR ALL PERMITS.
- ALL TREES SHALL BE LOCATED WITHIN A MULCHING BED WITH A MINIMUM OF TWO (2) FEET OF CLEARANCE TO THE EDGE OF THE BED.
- ALL SOD SHALL BE STENOPTAPHRUM SECONDATUM 'FLORITAM' (ST. AUGUSTINE SOD), UNLESS OTHERWISE NOTED.
- ALL VEGETATION SHALL BE SELECTED AND POSITIONED SO THAT IT DOES NOT PRESENT OBSTRUCTIONS TO THE LINE OF SIGHT AT INTERSECTIONS PURSUANT TO FLORIDA DEPARTMENT OF TRANSPORTATION SIGHT LINE GUIDELINES.
- CLEAR VISIBILITY SHALL BE MAINTAINED BETWEEN 30" AND 8" WITHIN SIGHT VISIBILITY TRIANGLES. 10' X 10' SIGHT VISIBILITY TRIANGLES SHALL BE PROVIDED AT THE REQUIREMENTS WITH THE PUBLIC RIGHT OF WAY. IN ADDITION, ALL LANDSCAPING SHALL CONFORM TO THE REQUIREMENTS OF FOOT INDEX 546.
- ALL LANDSCAPE ISLANDS AND BEDS WILL BE FREE OF SHELL ROCK AND CONSTRUCTION DEBRIS, EXCAVATED TO A DEPTH OF 30 INCHES OR TO CLEAN NATIVE SOILS AND FILLED WITH THE SPECIFIED BACKFILL MIXTURE.
- ALL PROPOSED LANDSCAPE AREAS SHALL RECEIVE 100% OVERLAP COVERAGE FROM A FULLY AUTOMATIC IRRIGATION SYSTEM EQUIPPED WITH A RAIN SENSING DEVICE ACCORDING TO LOCAL AND STATE CODES. IRRIGATION WATER SHALL BE PULLED FROM A WELL SOURCE AND CITY WATER WILL BE USED AROUND BUILDING.
- ALL ABOVE GROUND UTILITIES SHALL BE SCREENED FROM VIEW ON THREE SIDES WITH AN APPROPRIATE HEDGE MATERIAL. HEIGHT OF PLANT MATERIAL AT TIME OF INSTALLATION SHALL BE AT LEAST AS TALL AS THE UTILITY BEING SCREENED AND SHALL BE SPACED APPROPRIATELY IN ORDER TO PROVIDE COMPLETE SCREENING OF UTILITY WITHIN ONE YEAR OF INSTALLATION.
- ALL TREES NOT LOCATED WITHIN A LANDSCAPE BED SHALL RECEIVE A 4-5" DIA. MULCH RING.
- ALL EXOTIC AND NUISANCE VEGETATION SHALL BE REMOVED FROM SUBJECT PROPERTY PRIOR TO ANY CERTIFICATE OF OCCUPANCY.
- TREES ARE TO BE INSTALLED WITH A 10' SEPARATION FROM ANY WATER OR SEWER MAIN AND/OR SERVICE, HYDRANTS, AND LIFT STATIONS. IF A 10' SEPARATION CANNOT BE ACHIEVED, THE TREE CAN BE INSTALLED WITH A ROOT BARRIER SYSTEM. HOWEVER IN NO CASE SHALL A TREE ENCRUST CLOSER THAN 5' WITH A ROOT BARRIER PRESENT. ONLY SOD CAN BE INSTALLED WITHIN 7.5' OF A FIRE HYDRANT UNLESS OTHERWISE APPROVED BY THE FIRE MARSHAL.
- ALL PLANT MATERIAL SHALL BE INSTALLED AT THE HEIGHT, SPREAD AND DBH SHOWN ON THE PLANT LIST. CONTAINER SIZES ARE GIVEN AS A SUGGESTION ONLY.

PLANTING SPECIFICATIONS

- SCOPE OF WORK
 LANDSCAPE CONTRACTOR WORK INCLUDES, BUT IS NOT LIMITED TO, SOIL PREPARATION, FINE OR FINISH GRADING, FURNISHING AND INSTALLING PLANT MATERIAL, WATERING, STAKING, GUYING AND MULCHING.
 ALL LABOR AND MATERIAL FOR SOIL AMENDMENTS AND FERTILIZER THAT IS REQUIRED TO INSURE THE SUCCESSFUL ESTABLISHMENT AND SURVIVAL OF THE PROPOSED VEGETATION, AS WELL AS ALL THE COST FOR THE REMOVAL OF UNSUITABLE OR EXCESS BACKFILL MATERIAL, SHALL BE INCLUDED IN THE CONTRACTOR'S BID TO PERFORM THE WORK REFERRED TO IN THIS PLAN SET.
 2. QUALITY ASSURANCE
 LANDSCAPE CONTRACTOR MUST BE REGULARLY ENGAGED IN THE INSTALLATION OF LIVING PLANT MATERIAL. LABOR CREWS SHALL BE CONTROLLED AND DIRECTED BY A LANDSCAPE FOREMAN WELL Versed IN LANDSCAPE INSTALLATION, PLANT MATERIALS, READING PLANS AND COORDINATION BETWEEN THE JOB AND NURSERY.
 THE LANDSCAPE CONTRACTOR AND IRRIGATION CONTRACTOR SHALL REVIEW LAYOUT AND SCHEDULING PRIOR TO INSTALLATION OF MATERIAL. MINOR ADJUSTMENT TO IRRIGATION DESIGN MAY BE MADE IN RESPONSE TO THE NEEDS OF SPECIFIC PLANT MATERIAL. THE LANDSCAPE ARCHITECT MUST BE NOTIFIED OF SUCH CHANGES.
 3. MATERIALS
 PLANT SIZE AND QUALITY
 PLANT SPECIES AND SIZES SHALL CONFORM TO THOSE INDICATED ON THE DRAWINGS. NOMENCLATURE SHALL CONFORM TO STANDARD PLANT NAMES, 1942 EDITION. ALL NURSERY STOCK SHALL BE IN ACCORDANCE WITH GRADES AND STANDARDS FOR NURSERY PLANTS PARTS I & II, LATEST EDITION PUBLISHED BY THE FLORIDA DEPARTMENT OF AGRICULTURE AND CONSUMER SERVICES, UNLESS SPECIFIED OTHERWISE. ALL PLANTS SHALL BE FLORIDA GRADE NUMBER 1 OR BETTER AS DETERMINED BY THE FLORIDA DIVISION OF PLANT INDUSTRY. TIGHTLY KNIT PLANT, SO TRAINED OR FAVORED IN ITS DEVELOPMENT THAT FIRST APPEARANCE IS UNQUESTIONABLE AND IT IS OUTSTANDINGLY SUPERIOR IN FORM, NUMBER OF BRANCHES, COMPACTNESS AND SYMMETRY. ALL PLANTS SHALL BE FRESHLY DUG, SOUND, HEALTHY, VIGOROUS, WELL BRANCHED AND FREE OF DISEASE AND INSECT EGGS AND LARVAE AND SHALL HAVE ADEQUATE ROOT SYSTEMS. TREES AND PALMS FOR PLANTING ROWS SHALL BE UNIFORM IN SIZE AND SHAPE. ALL MATERIALS SHALL BE SUBJECT TO APPROVAL BY THE LANDSCAPE ARCHITECT. THE PLANTS FURNISHED SHALL BE NORMAL FOR THE VARIETY AND FLORIDA NUMBER 1. PLANTS SHALL BE PRUNED PRIOR TO DELIVERY ONLY UPON THE APPROVAL OF THE LANDSCAPE ARCHITECT. ALL PLANTS SHALL BE FREE OF WEEDS OR ANY OTHER OBJECTIONABLE VEGETATION.
 ALL CONTAINER GROWN MATERIAL SHALL BE HEALTHY, VIGOROUS, WELL-ROOTED PLANTS AND ESTABLISHED IN THE CONTAINER IN WHICH THEY ARE SOLD. THE PLANTS SHALL HAVE TOPS OF GOOD QUALITY AND BE IN A HEALTHY GROWING CONDITION.
 CONTAINER GROWN PLANTS SHALL HAVE A DEVELOPED ROOT STRUCTURE SO THAT THE ROOT MASS STAYS IN TACT WHEN REMOVED FROM CONTAINER. IN NO CASE SHALL THE PLANT CONTAIN CIRCLING ROOTS NOR BE ROOT BOUND.
 QUANTITIES
 ALL QUANTITIES INDICATED ON THE PLANT LIST ARE INTENDED AS A GUIDE FOR THE BIDDERS; AND DOES NOT RELIEVE THE BIDDER OF HIS RESPONSIBILITY TO DO A COMPREHENSIVE PLANT TAKE OFF. SHALL A DISCREPANCY OCCUR BETWEEN THE BIDDER'S TAKE OFF AND THE PLANT LIST QUANTITY, THE LANDSCAPE ARCHITECT IS TO BE NOTIFIED FOR CLARIFICATION PRIOR TO THE SUBMISSION OF THE BID.
 MULCH
 MULCH SHALL BE A SHREDDED VARIETY AS SPECIFIED IN THE PLANT LIST. ALL MULCH IS TO BE APPLIED TO A DEPTH OF 3" EXCEPT FOR THOSE SPECIFIC SITUATIONS SHOWN BELOW IN SECTION 4 AND IN PLANTING DETAILS.
 FERTILIZER
 FERTILIZER IN BACKFILL MIXTURE FOR ALL PLANTS SHALL CONSIST OF 'MILORGANITE' ACTIVATED SLUDGE MIXED WITH THE BACKFILL AT A RATE OF NOT LESS THAN 50 LBS. PER CUBIC YARD.
 FERTILIZER FOR TREES AND SHRUBS MAY BE TABLET FORM OR GRANULAR. GRANULAR FERTILIZER SHALL BE UNIFORM IN COMPOSITION, DRY AND FREE-FLOWING. THIS FERTILIZER SHALL BE DELIVERED TO THE SITE IN THE ORIGINAL UNOPENED BAGS, EACH BEARING THE MANUFACTURER'S STATEMENT OF ANALYSIS. FERTILIZE ALL NEW PLANTINGS PER RATES SHOWN BELOW:
 TREES:
 FERTILIZE NEW TREES WITH 'MILORGANITE' AT THE FOLLOWING RATES:
 - 8' AND SMALLER: 2-4 LBS.
 - 8'-12' TALL: 4-6 LBS.
 - 12' AND TALLER: 6-8 LBS.
 (3 CUPS = 1 LB.)
 SHRUBS:
 FERTILIZE NEW SHRUBS AND ACCENTS WITH 'MILORGANITE' AT THE FOLLOWING RATES:
 - 4-6" POTS: 1/2 CUP
 - 1 GALL.: 1/2 CUP
 - 2 GALL.: 1 CUP
 - 7-10 GALL.: 2 CUPS
 - 15 GALL. AND GREATER: 3 CUPS
 PALM TREES:
 FERTILIZE NEW PALM TREES WITH A "PALM SPECIAL" FERTILIZER IN SLOW RELEASE FORM. FERTILIZER SHALL CONTAIN AN ADDITIONAL MAGNESIUM AND MICRO-NUTRIENT AMENDMENT
 SOIL
 PLANTING SOIL SHALL BE SANDY LOAM AND SHALL CONTAIN A 25% MINIMUM AMOUNT OF DECOMPOSED ORGANIC MATTER. REPRESENTATIVE. INCLUDE WATERING, WEEDING, CULTIVATING, RESTORATION OF GRASS, MOWING AND TRIMMING GRASS, PRUNING TREES AND SHRUBS, PROTECTION FROM INSECTS AND DISEASES, FERTILIZING AND SIMILAR OPERATIONS AS NEEDED TO INSURE NORMAL GROWTH AND GOOD HEALTH FOR LIVE PLANT MATERIAL. SETTLED PLANTS SHALL BE RESET TO PROPER GRADE, PLANTING SCAFFERS RESTORED, AND DEFECTIVE WORK CORRECTED.
 IN THE EVENT OF SERIOUS DAMAGE FROM INSECTS OR DISEASE PRIOR TO FINAL ACCEPTANCE, THE PLANTS SHALL BE TREATED BY PREVENTATIVE OR REMEDIAL MEASURES APPROVED FOR GOOD HORTICULTURAL PRACTICE AT NO ADDITIONAL COST TO THE OWNER.
 DO NOT ALLOW AIR POCKETS TO FORM WHEN BACKFILLING. ALL TREES SHALL BE SPIKED IN UTILIZING WATER AND A TREE BAR.

4. EXECUTION
 FIELD GROWN TREES AND PALMS PREVIOUSLY ROOT PRUNED SHALL OBTAIN A ROOT BALL WITH SUFFICIENT ROOTS FOR CONTINUED GROWTH WITHOUT RESULTING SHOCK.
 CONTRACTOR SHALL NOT MARK OR SCAR TRUNK IN ANY FASHION.
 PLANTS SHALL BE WATERED AS NECESSARY OR WITHIN 24 HOURS AFTER NOTIFICATION BY THE LANDSCAPE ARCHITECT.
 THE LOCATIONS OF PLANTS, AS SHOWN IN THESE PLANS, ARE APPROXIMATE. THE FINAL LOCATIONS MAY BE ADJUSTED TO ACCOMMODATE UNFORESEEN FIELD CONDITIONS. MAJOR ADJUSTMENTS TO THE LAYOUT ARE TO BE APPROVED BY THE LANDSCAPE ARCHITECT.
 ALL PLASTIC FABRIC SHALL BE REMOVED FROM PLANT MATERIAL AT TIME OF INSTALLATION.
 ALL TREES MUST BE STAKED AS SHOWN ON THE PLANTING DETAILS WITHIN 24 HOURS OF PLANTING. STAKES TO REMAIN FOR A MINIMUM OF 9 MONTHS, BUT NO LONGER THAN 18 MONTHS. CONTRACTOR IS RESPONSIBLE FOR MAINTENANCE AND REMOVAL OF THE STAKES.
 ALL TREES MUST BE PRUNED AS PER LANDSCAPE ARCHITECT'S DIRECTION. SABAL PALMS MAY BE HURRICANE CUT.
 ALL SHRUBS, TREES AND GROUND COVER WILL HAVE IMPROVED SOIL AS PER PLANTING SOIL NOTES. THE SOILS SHALL BE PLACED IN THE HOLE DURING PLANTING. TOP DRESSING ONLY IS NOT ACCEPTABLE.
 DO NOT ALLOW AIR POCKETS TO FORM WHEN BACKFILLING. ALL TREES SHALL BE SPIKED IN UTILIZING WATER AND A TREE BAR.
 AFTER FINAL SETTLING OF BALLED AND BURLAPED PLANTS, LOOSEN BURLAP WRAPPING EXPOSING THE TOP OF THE ROOTBALL, LEAVING THE BALL UNBROKEN. REMOVE EXCESS AMOUNTS OF BURLAP TO ELIMINATE VOIDS WHICH MAY BE CAUSED UPON DECOMPOSITION.

CONTAINER GROWN PLANTS SHALL, WHEN DELIVERED, SHALL HAVE SUFFICIENT GROWTH TO HOLD EARTH INTACT WHEN REMOVED FROM CONTAINER AND SHALL NOT BE ROOT BOUND. PLANT PITS FOR CONTAINER MATERIALS SHALL BE FORMED FLAT ON THE BOTTOM TO AVOID AIR POCKETS AT THE BOTTOM OF ROOT BALLS AND CONTAINERS SHALL BE REMOVED CAREFULLY TO PREVENT DAMAGE TO THE PLANT OR ROOT SYSTEMS.
 TEST TREE PITS WITH WATER BEFORE PLANTING TO ASSURE PROPER DRAINAGE PERCOLATION IS AVAILABLE. PITS WHICH ARE FOUND NOT TO BE ADEQUATELY DRAINING SHALL BE EXCAVATED TO A DEPTH SUFFICIENT FOR DRAINAGE AND BACKFILLING WITH GRAVEL OR CRUSHED ROCK. NO ALLOWANCES WILL BE MADE FOR LOST PLANTS DUE TO IMPROPER DRAINAGE.

PLANTING BED PREPARATION
 ALL PLANTING BEDS SHALL BE PROPERLY PREPARED PRIOR TO THE COMMENCEMENT OF ANY PLANTING. PLANTING AREAS, INCLUDING LAWNS SHALL BE FREE OF ALL WEEDS AND NUISANCE VEGETATION. IF TORPEDO GRASS (PANICUM REPENS) IS PRESENT OR ENCOUNTERED DURING PLANTING, THE LANDSCAPE CONTRACTOR SHALL STOP ALL PLANTING UNTIL IT CAN BE DEMONSTRATED THAT IT HAS BEEN COMPLETELY REMOVED OR ERADICATED. THERE SHALL BE NO EXCEPTIONS TO THIS PROVISION.

ALL LANDSCAPE ISLANDS AND BEDS WILL BE FREE OF SHELL ROCK AND CONSTRUCTION DEBRIS AND WILL BE EXCAVATED TO A DEPTH OF 30 INCHES OR TO CLEAN, NATIVE SOIL AND FILLED WITH THE SPECIFIED BACKFILL MIXTURE.

PLANTING TREES
 EXCAVATE PIT AS PER PLANTING DETAILS. COMPACT LAYER OF TOPSOIL IN PIT WITH A SLIGHTLY DISHED GRADE TO CENTER.
 BACKFILL AROUND BALL WITH TOPSOIL AND SLIGHTLY COMPACT, WATER THOROUGHLY AS LAYERS ARE PLACED TO ELIMINATE VOIDS AND AIR POCKETS. BUILD A 4" HIGH BERM OF TOPSOIL BEYOND EDGE OF EXCAVATION. APPLY 3" (AFTER SETTLEMENT) OF MULCH.
 PRUNE TREE TO REMOVE DAMAGED BRANCHES, IMPROVE NATURAL SHAPE AND THIN OUT STRUCTURE. DO NOT REMOVE MORE THAN 15% OF BRANCHES. DO NOT PRUNE BACK TERMINAL LEADER.
 GUY AND STAKE TREE IN ACCORDANCE WITH THE STAKING DETAILS IMMEDIATELY AFTER PLANTING.

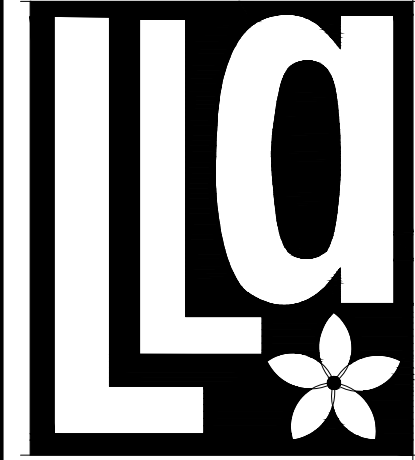
PLANTING SHRUBS
 LAYOUT SHRUBS TO CREATE A CONTINUOUS SMOOTH FRONT LINE AND FILL IN BEHIND.
 EXCAVATE PIT OR TRENCH TO 1-1/2 TIMES THE DIAMETER OF THE BALLS OR CONTAINERS OR 1" 0" WIDER THAN THE SPREAD OF ROOTS AND 3" DEEPER THAN REQUIRED FOR POSITIONING AT PROPER HEIGHT. COMPACT A LAYER OF TOPSOIL IN BOTTOM BEFORE PLACING PLANTS. BACKFILL AROUND PLANTS WITH PLANTING MIXTURE, COMPACTED TO ELIMINATE VOIDS AND AIR POCKETS. FORM GRADE SLIGHTLY DISHED AND BERMED AT EDGES OF EXCAVATION. APPLY 3" OF MULCH.
 PRUNE SHRUBS TO REMOVE DAMAGED BRANCHES, IMPROVE NATURAL SHAPE AND THIN OUT STRUCTURE. DO NOT REMOVE MORE THAN 15% OF BRANCHES.

PLANTING GROUND COVER
 LOOSEN SUBGRADE TO DEPTH OF 4" IN AREAS WHERE TOPSOIL HAS BEEN STRIPPED AND SPREAD SMOOTH.
 SPACE PLANTS AS OTHERWISE INDICATED. DIG HOLES LARGE ENOUGH TO ALLOW SPREADING OF ROOTS. COMPACT BACKFILL TO ELIMINATE VOIDS AND LEAVE GRADE SLIGHTLY DISHED AT EACH PLANT. WATER THOROUGHLY. APPLY 3" OF MULCH OVER ENTIRE PLANTING BED, LIFTING PLANT FOLIAGE ABOVE MULCH. PURPLE QUEEN GROUND COVER, IF SPECIFIED, SHALL ONLY RECEIVE 1" OF MULCH.
 DURING PERIODS OF HOT SUN AND/OR WIND AT TIME OF PLANTING, PROVIDE PROTECTIVE COVER FOR SEVERAL DAYS OR AS NEEDED.

PLANTING SOD
 SODDING: SOD TYPE SPECIFIED ON PLANT LIST SHALL BE MACHINE STRIPPED NOT MORE THAN 24 HOURS PRIOR TO LAYING. SOD SHALL BE FIRM, TOUGH TEXTURE, HAVING A COMPACT GROWTH OF GRASS WITH GOOD ROOT DEVELOPMENT, AND SHALL CONTAIN NO BERNUDA GRASS, WEEDS OR ANY OTHER OBJECTIONABLE VEGETATION.
 LOOSEN SUBGRADE TO DEPTH OF 4" AND GRADE WITH TOPSOIL EITHER PROVIDED ON SITE OR IMPORTED TO FINISH DESIGN ELEVATIONS. IT SHALL BE THE RESPONSIBILITY OF THE LANDSCAPE CONTRACTOR TO FINISH GRADE ALL LANDSCAPE AREAS, ELIMINATING ALL BUMPS, DEPRESSIONS, STICKS, STONES AND OTHER DEBRIS. ROLL PREPARED LAWN SURFACE. WATER THOROUGHLY, BUT DO NOT CREATE MUDDY SOIL CONDITION.

FERTILIZER SOIL AT THE RATE OF APPROXIMATELY 10 LBS. PER 1,000 S.F. SPREAD FERTILIZER OVER THE AREA TO RECEIVE GRASS BY USING AN APPROVED DISTRIBUTION DEVICE CALIBRATED TO DISTRIBUTE THE APPROPRIATE QUANTITY. DO NOT FERTILIZE WHEN WIND VELOCITY EXCEEDS 15 M.P.H. THOROUGHLY MIX FERTILIZER INTO THE TOP 2" OF TOPSOIL.
 LAY SOD STRIPS WITH TIGHT JOINTS, DO NOT OVERLAP, STAGGER STRIPS TO OFFSET JOINTS IN ADJACENT COURSES. WORK SIFTED SOIL MIX INTO MINOR CRACKS BETWEEN PIECES OF SOD AND REMOVE EXCESS SOIL DEPOSITS FROM SODDED AREAS. SOD ON SLOPES GREATER THAN 3:1 SHALL BE STAKED IN PLACE. ROLL OR STAMP LIGHTLY AND WATER THOROUGHLY WITH A FINE SPRAY IMMEDIATELY AFTER PLANTING.

5. MISCELLANEOUS LANDSCAPE WORK
 LANDSCAPE MAINTENANCE
 MAINTAIN LANDSCAPE WORK IMMEDIATELY AFTER PLANTING AND UNTIL FINAL ACCEPTANCE IS ISSUED BY THE OWNER'S REPRESENTATIVE. INCLUDE WATERING, WEEDING, CULTIVATING, RESTORATION OF GRASS, MOWING AND TRIMMING GRASS, PRUNING TREES AND SHRUBS, PROTECTION FROM INSECTS AND DISEASES, FERTILIZING AND SIMILAR OPERATIONS AS NEEDED TO INSURE NORMAL GROWTH AND GOOD HEALTH FOR LIVE PLANT MATERIAL. SETTLED PLANTS SHALL BE RESET TO PROPER GRADE, PLANTING SCAFFERS RESTORED, AND DEFECTIVE WORK CORRECTED.
 IN THE EVENT OF SERIOUS DAMAGE FROM INSECTS OR DISEASE PRIOR TO FINAL ACCEPTANCE, THE PLANTS SHALL BE TREATED BY PREVENTATIVE OR REMEDIAL MEASURES APPROVED FOR GOOD HORTICULTURAL PRACTICE AT NO ADDITIONAL COST TO THE OWNER.
 CLEAN UP
 THE LANDSCAPE CONTRACTOR SHALL AT ALL TIMES KEEP THE PREMISES FREE FROM ACCUMULATION OF WASTE MATERIALS OR DEBRIS CAUSED BY HIS CREWS DURING THE PERFORMANCE OF THE WORK. UPON COMPLETION OF THE WORK, THE CONTRACTOR SHALL PROMPTLY REMOVE ALL WASTE MATERIALS, DEBRIS, UNUSED PLANT MATERIAL, EMPTY PLANT CONTAINERS AND ALL EQUIPMENT FROM THE PROJECT SITE.
 ANY SOIL, PEAT OR SIMILAR MATERIAL WHICH HAS BEEN BROUGHT ONTO ANY PAVED AREAS SHALL BE REMOVED PROMPTLY KEEPING THESE AREAS CLEAN AS THE WORK PROGRESSES. UPON COMPLETION OF THE PLANTING, ALL EXCESS SOIL, STONES AND DEBRIS WHICH HAS NOT BEEN PREVIOUSLY CLEANED UP SHALL BE REMOVED FROM THE SITE.



Litterick Landscape Architecture

2740 SW Martin Downs Blvd. #199
 Palm City, FL 34990
 561-719-3876
 Jason.L1677@yahoo.com

Project Name

Sunset Gardens
 Ft. Pierce, Florida
 4945 Edwards Road

Landscape Architect of Record



Jason M. Litterick, RLA (LA0001677)

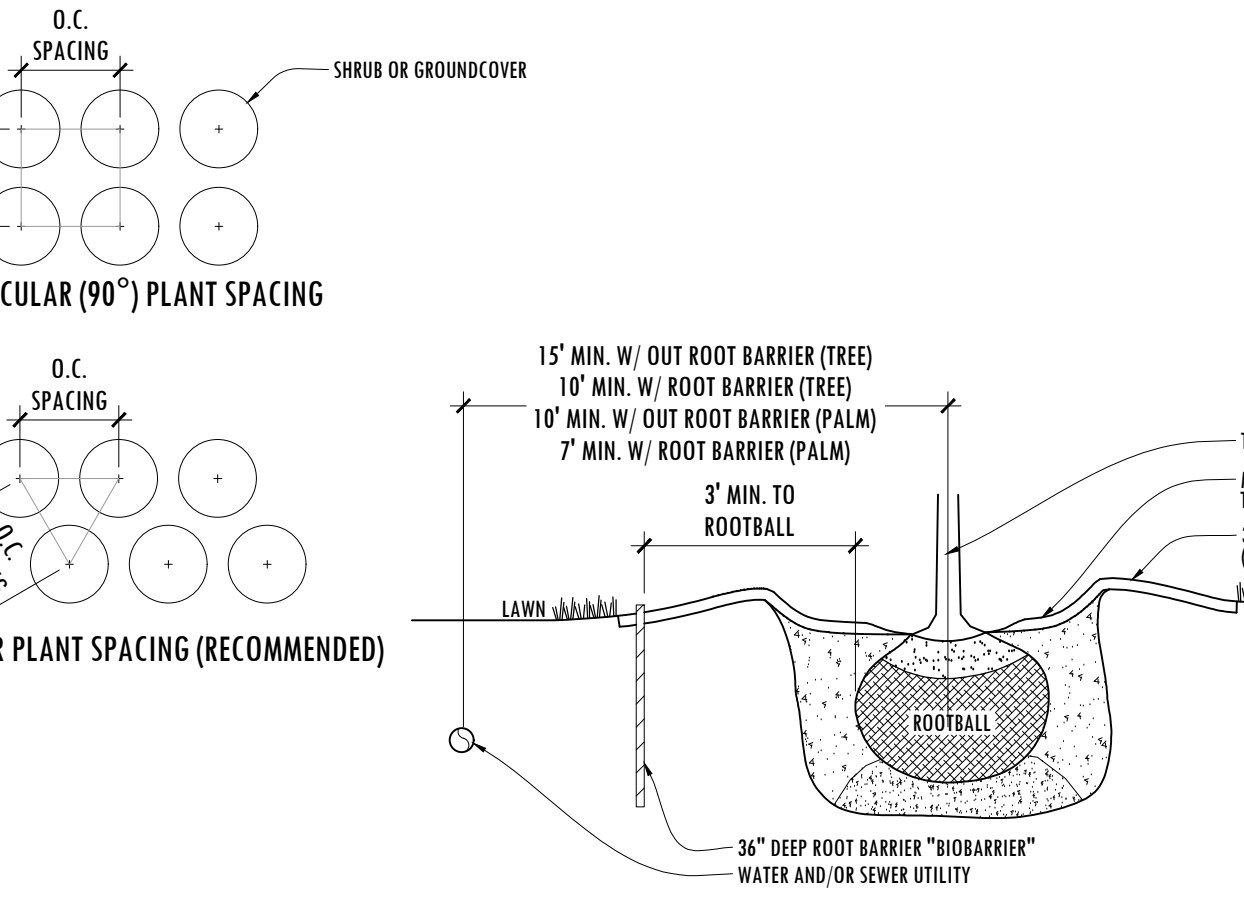
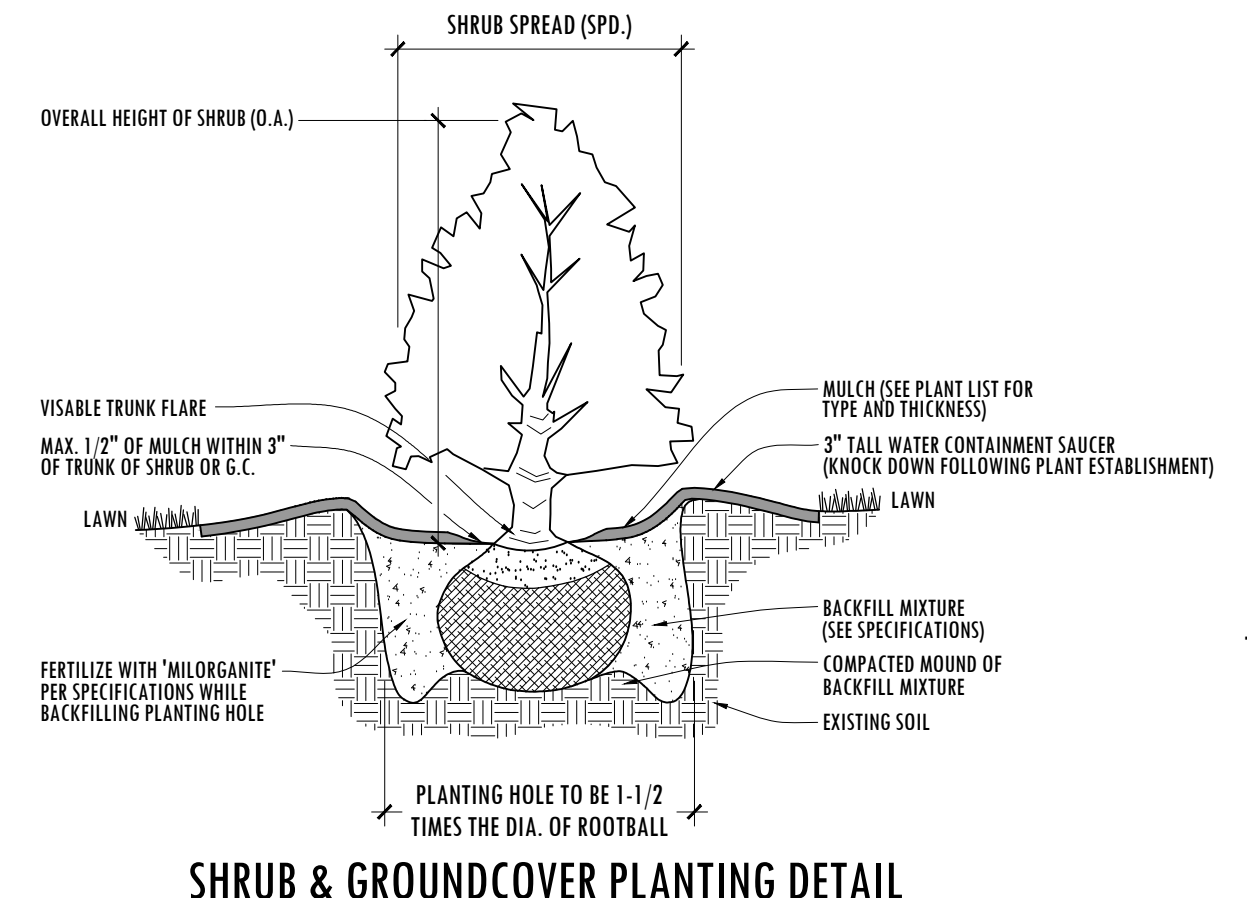
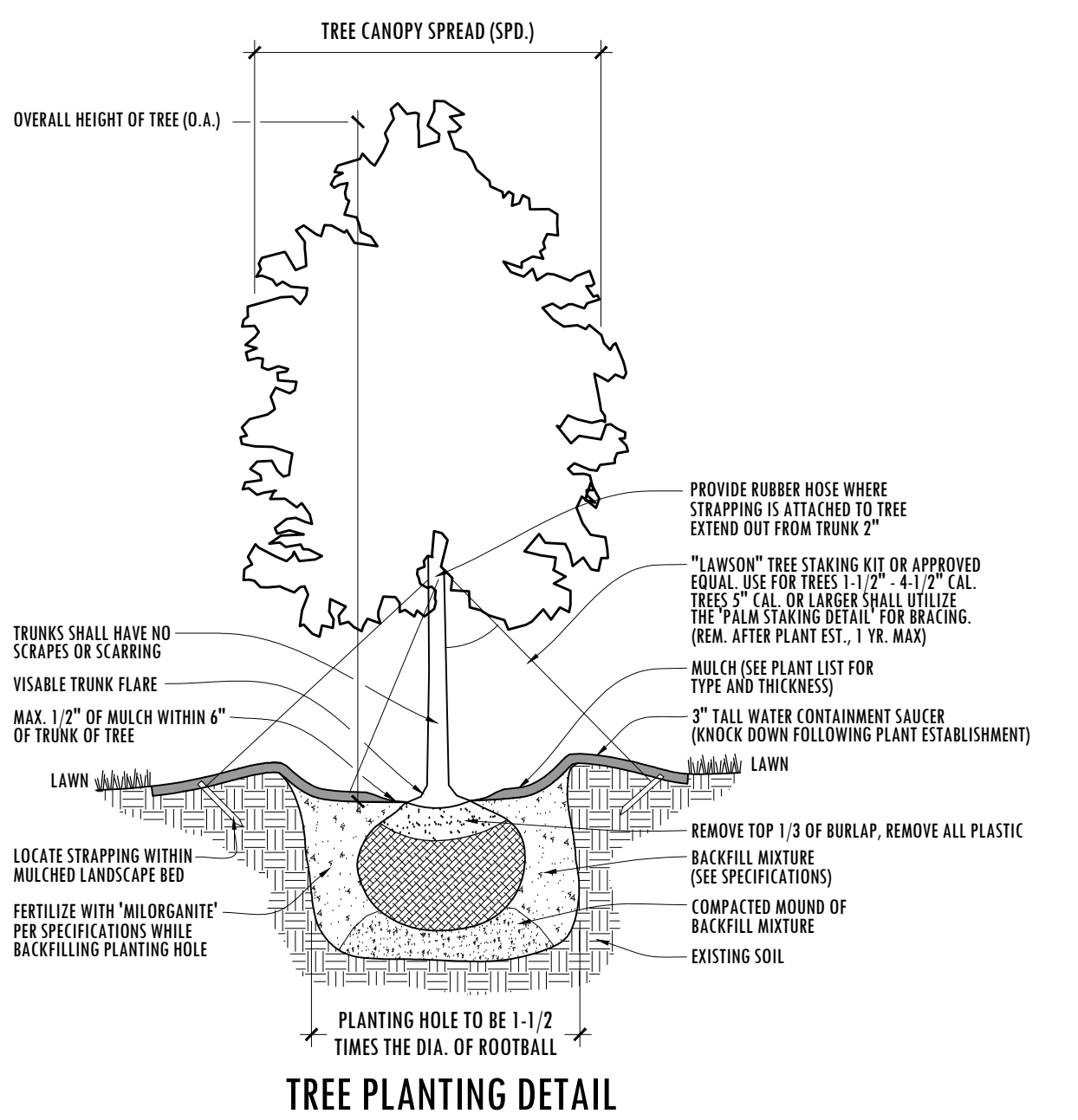
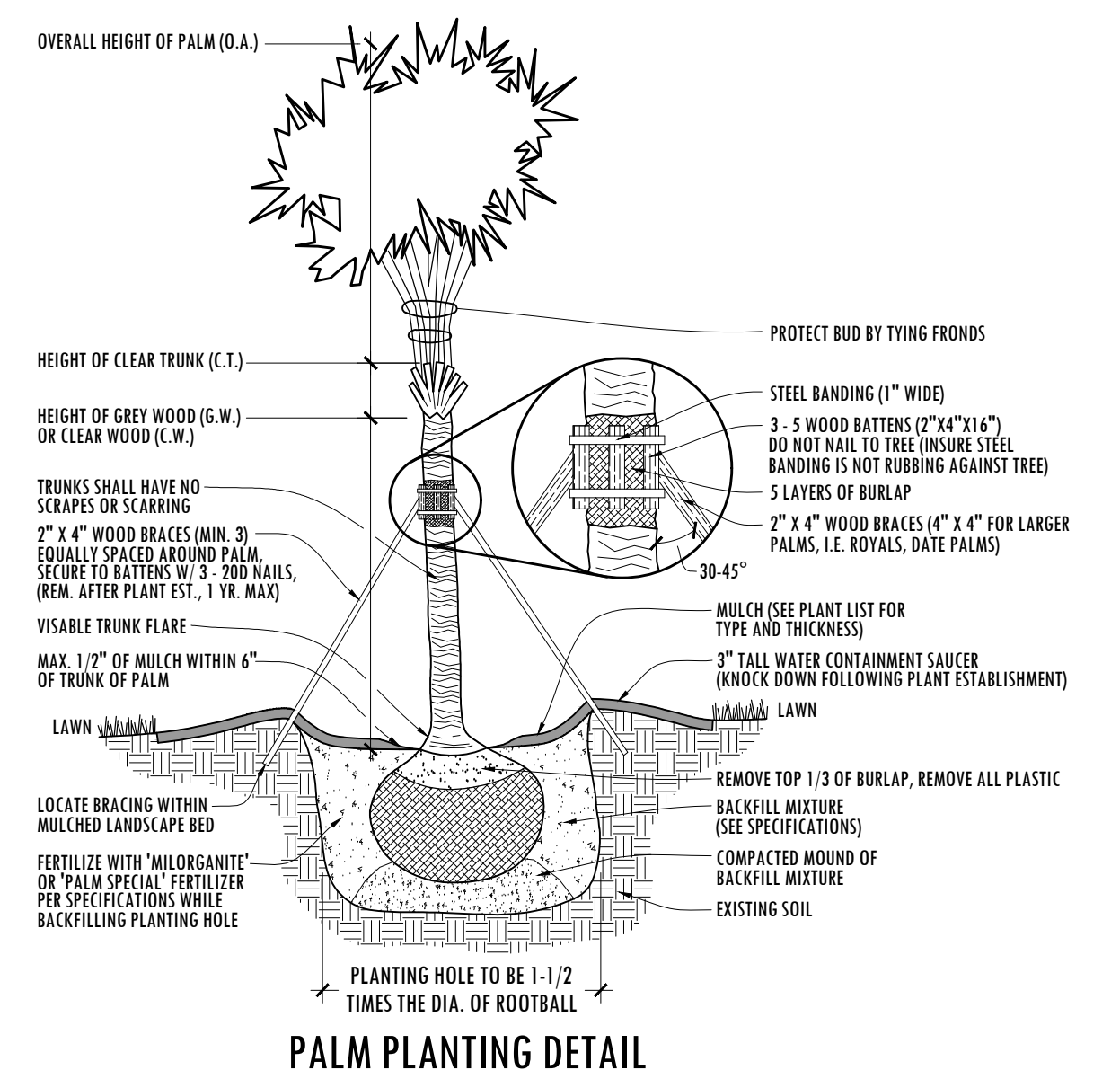
Scale: 1" = 10'-0"

Designed: JML
 Drawn: JML
 Approved: JML
 Date: 2/14/25
 Job no.
 Revisions:

Sheet No.

LP-6

PLANTING DETAILS



ROOT BARRIER DETAIL

Landscape Specifications & Planting Details