








| REVISIONS | DATE | BY |
|-----------|------|----|
|           |      |    |
|           |      |    |
|           |      |    |

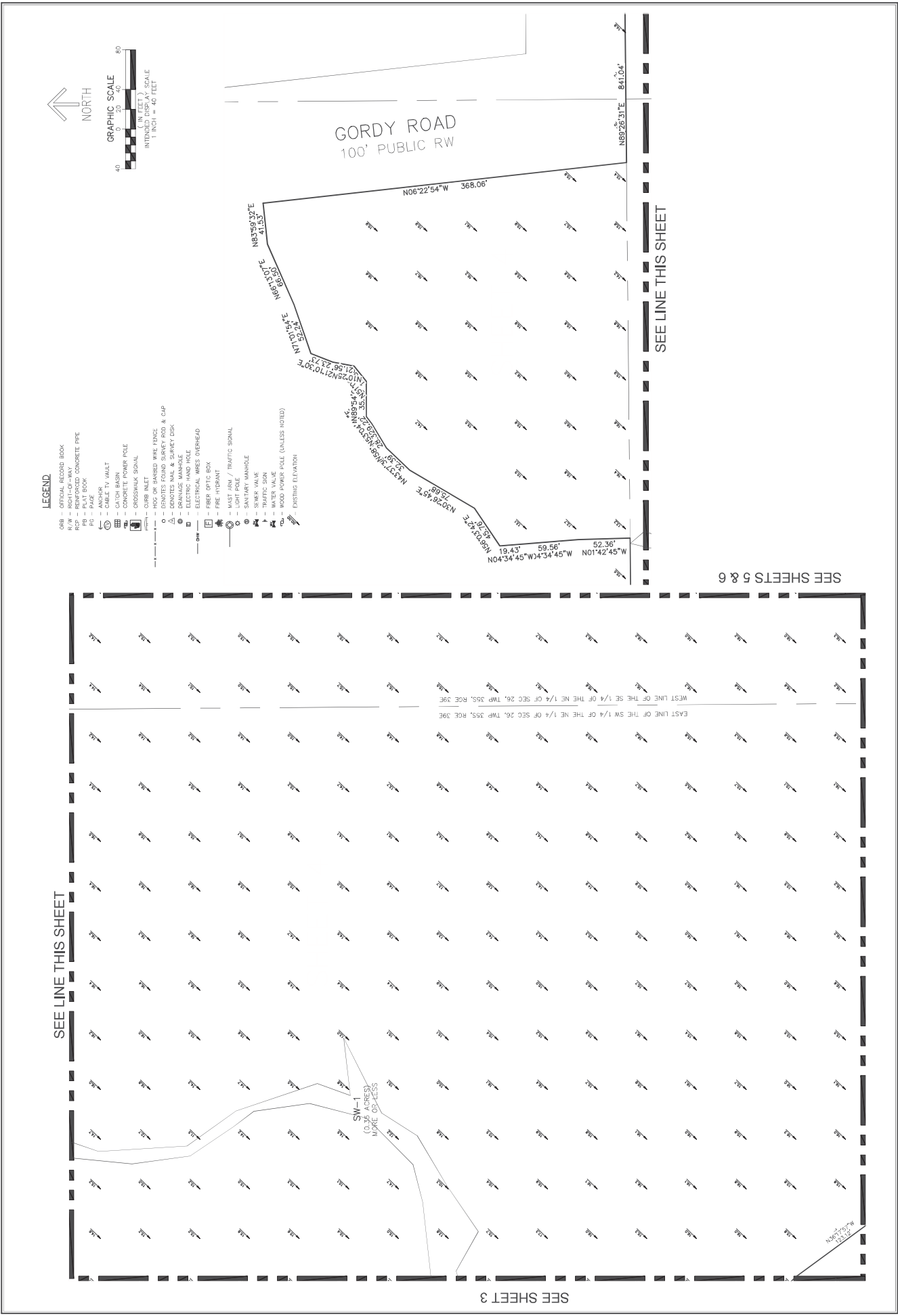
CAULFIELD & WHEELER, INC.  
 LANDSCAPE ARCHITECTURE - SURVEYING  
 7900 GLADES ROAD - SUITE 100  
 BOCA RATON, FLORIDA 33433  
 PHONE (561) 392-1991 / FAX (561) 750-1572



TOPOGRAPHIC SURVEY  
 SWANSON LAND COMPANY  
 GORDY CREEK  
 ST. LUCIE COUNTY, FLORIDA

|                 |
|-----------------|
| DATE: 2/2/2023  |
| DRAWN BY: RLE   |
| F.R./P.C. ELEC. |
| SCALE: AS SHOWN |

JOB # 10780  
 SHEET 4  
 OF 6 SHEETS



| REVISIONS | DATE | BY |
|-----------|------|----|
|           |      |    |
|           |      |    |
|           |      |    |
|           |      |    |

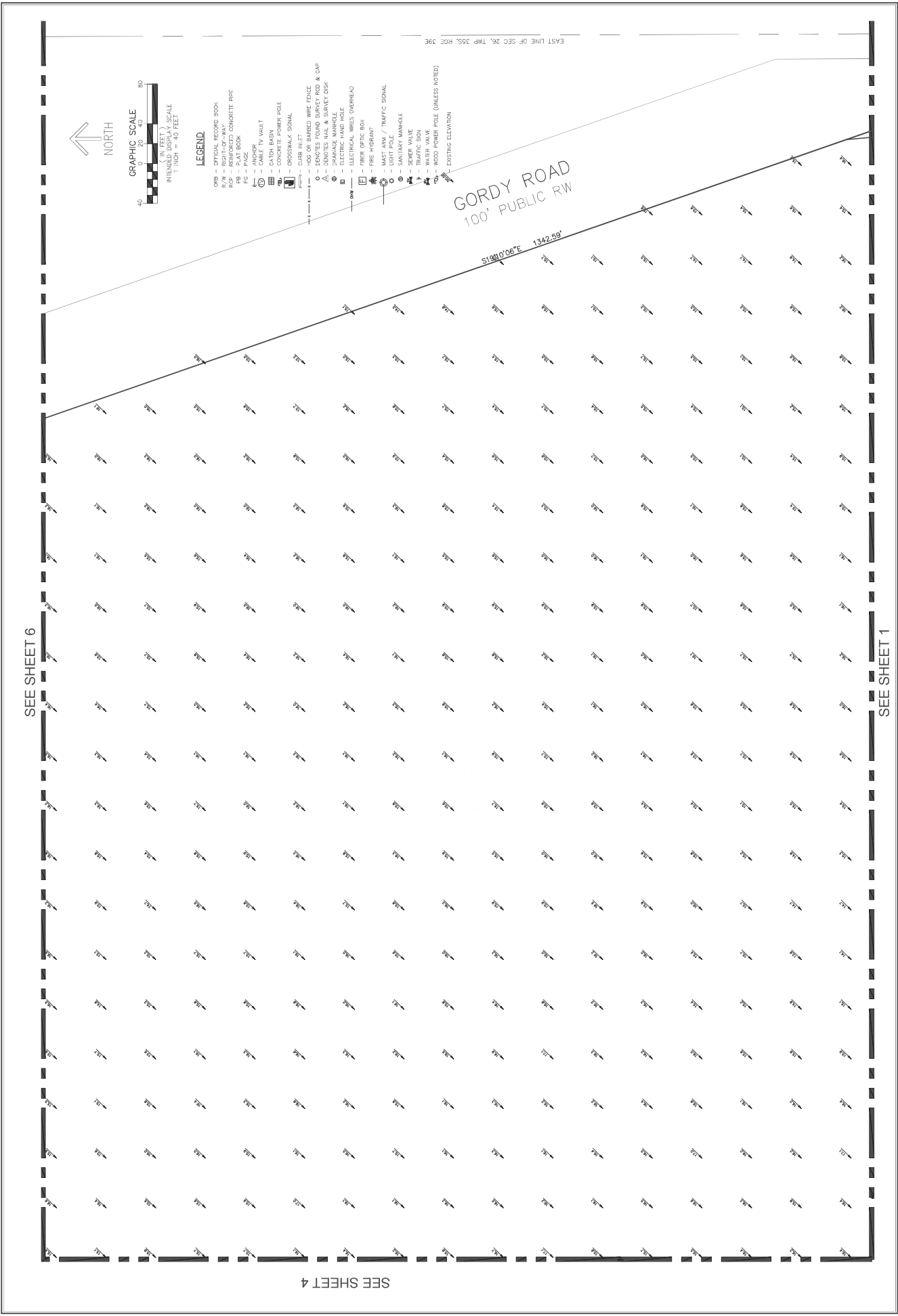
CAULFIELD & WHEELER, INC.  
 LANDSCAPE ARCHITECTURE - SURVEYING  
 7500 GLADES ROAD - SUITE 100  
 BOCA RATON, FLORIDA 33433  
 PHONE (561) 392-1991 / FAX (561) 750-1572



TOPOGRAPHIC SURVEY  
 SWANSON LAND COMPANY  
 GORDY CREEK  
 ST. LUCIE COUNTY, FLORIDA

|                   |
|-------------------|
| DATE: 2/2/2023    |
| DRAWN BY: RLE     |
| F.R./P.C. - ELEC: |
| SCALE: AS SHOWN   |

JOB # 10780  
 SHEET 5  
 OF 6 SHEETS



| REVISIONS | DATE | BY |
|-----------|------|----|
|           |      |    |
|           |      |    |
|           |      |    |

CAULFIELD & WHEELER, INC.  
 CIVIL ENGINEERING  
 LANDSCAPE ARCHITECTURE - SURVEYING  
 7500 GLADES ROAD - SUITE 100  
 BOCA RATON, FLORIDA 33433  
 PHONE (561) 392-1991 / FAX (561) 750-1552

TOPOGRAPHIC SURVEY  
 SWANSON LAND COMPANY  
 GORDY CREEK  
 ST. LUCIE COUNTY, FLORIDA

DATE: 2/21/2023  
 DRAWN BY: JLE  
 F.B./F.C. ELECT.  
 SCALE: AS SHOWN

JOB # 10108  
 SHEETS  
 6  
 OF 6 SHEETS

