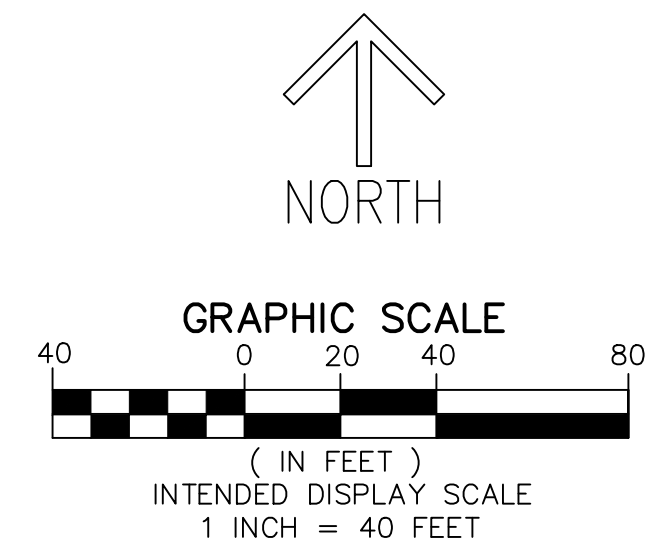


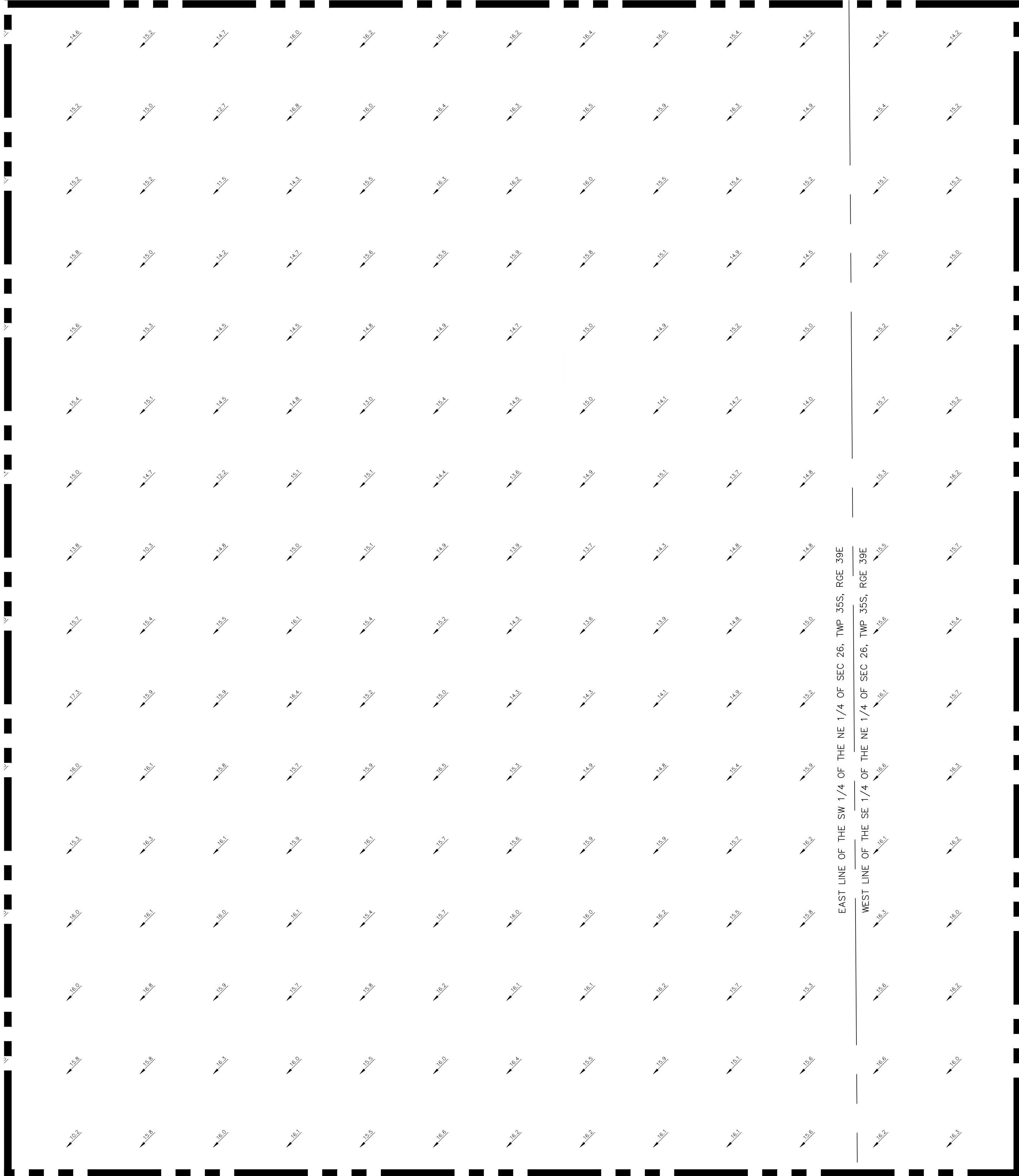
SEE LINE THIS SHEET

LEGEND

- ORB - OFFICIAL RECORD BOOK
- R/W - RIGHT-OF-WAY
- RCP - REINFORCED CONCRETE PIPE
- PB - PLAT BOOK
- PG - PAGE
- ⊕ - ANCHOR
- ⊕ - CABLE TV VAULT
- ⊕ - CATCH BASIN
- ⊕ - CONCRETE POWER POLE
- ⊕ - CROSSWALK SIGNAL
- ⊕ - CURB INLET
- x - x - x - HOG OR BARBED WIRE FENCE
- - DENOTES FOUND SURVEY ROD & CAP
- △ - DENOTES NAIL & SURVEY DISK
- ⊕ - DRAINAGE MANHOLE
- ⊕ - ELECTRIC HAND HOLE
- OHW - ELECTRICAL WIRES OVERHEAD
- ⊕ - FIBER OPTIC BOX
- ⊕ - FIRE HYDRANT
- ⊕ - MAST ARM / TRAFFIC SIGNAL
- ⊕ - LIGHT POLE
- ⊕ - SANITARY MANHOLE
- ⊕ - SEWER VALVE
- ⊕ - TRAFFIC SIGN
- ⊕ - WATER VALVE
- ⊕ - WOOD POWER POLE (UNLESS NOTED)
- ⊕ - EXISTING ELEVATION

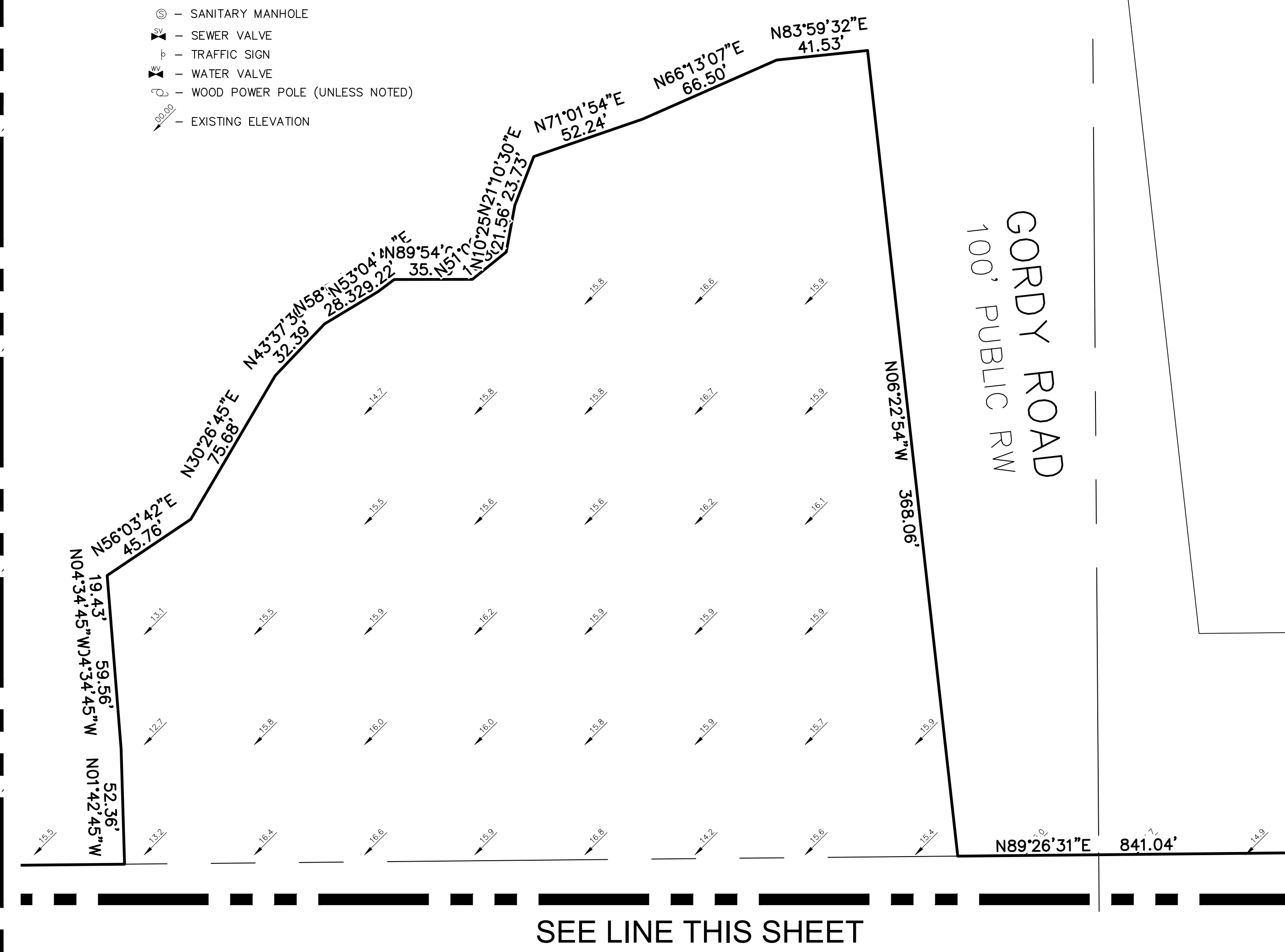


SEE SHEET 3



EAST LINE OF THE SW 1/4 OF THE NE 1/4 OF SEC 26, TWP 35S, RGE 39E
 WEST LINE OF THE SE 1/4 OF THE NE 1/4 OF SEC 26, TWP 35S, RGE 39E

SEE SHEETS 5 & 6



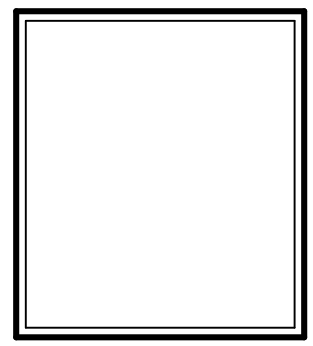
SEE LINE THIS SHEET

REVISIONS	DATE	BY

CAULFIELD & WHEELER, INC.
 CIVIL ENGINEERING
 LANDSCAPE ARCHITECTURE - SURVEYING
 7900 GLADES ROAD - SUITE 100
 BOCA RATON, FLORIDA 33434
 PHONE (561)-392-1991 / FAX (561)-750-1452

TOPOGRAPHIC SURVEY
 SWANSON LAND COMPANY
 GORDY CREEK
 ST. LUCIE COUNTY, FLORIDA

DATE 2/21/2024
 DRAWN BY RLF
 F.B./ PG. ELECT
 SCALE AS SHOWN



JOB # 10780
 SHT. NO. 4
 OF 6 SHEETS

