

Goose Development Annexation

(PZANN2025-0004)

Annexation
Planning & Zoning Board
10/13/2025

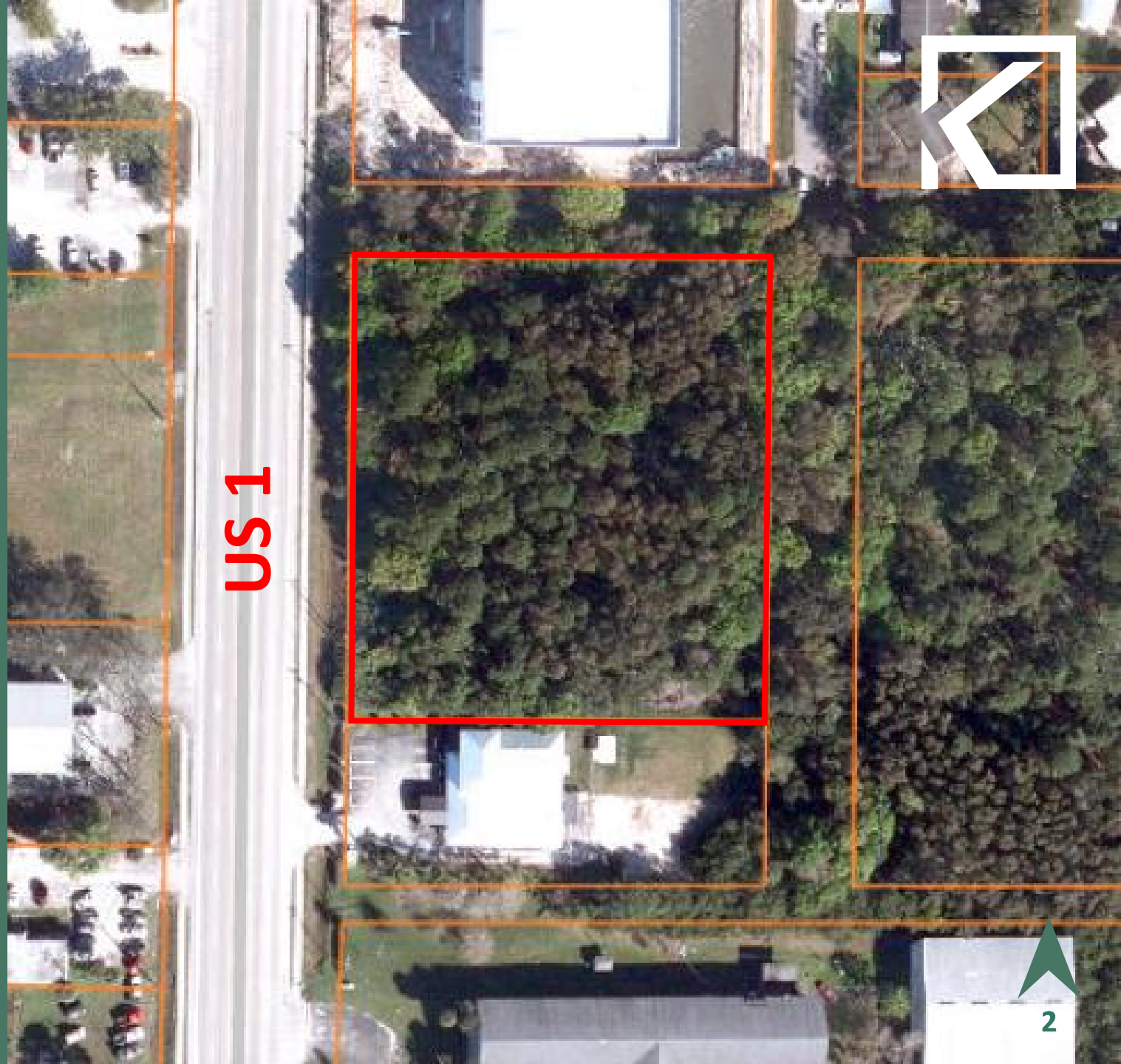
Background

Owner:

Goose Development
Fund

Acreage:

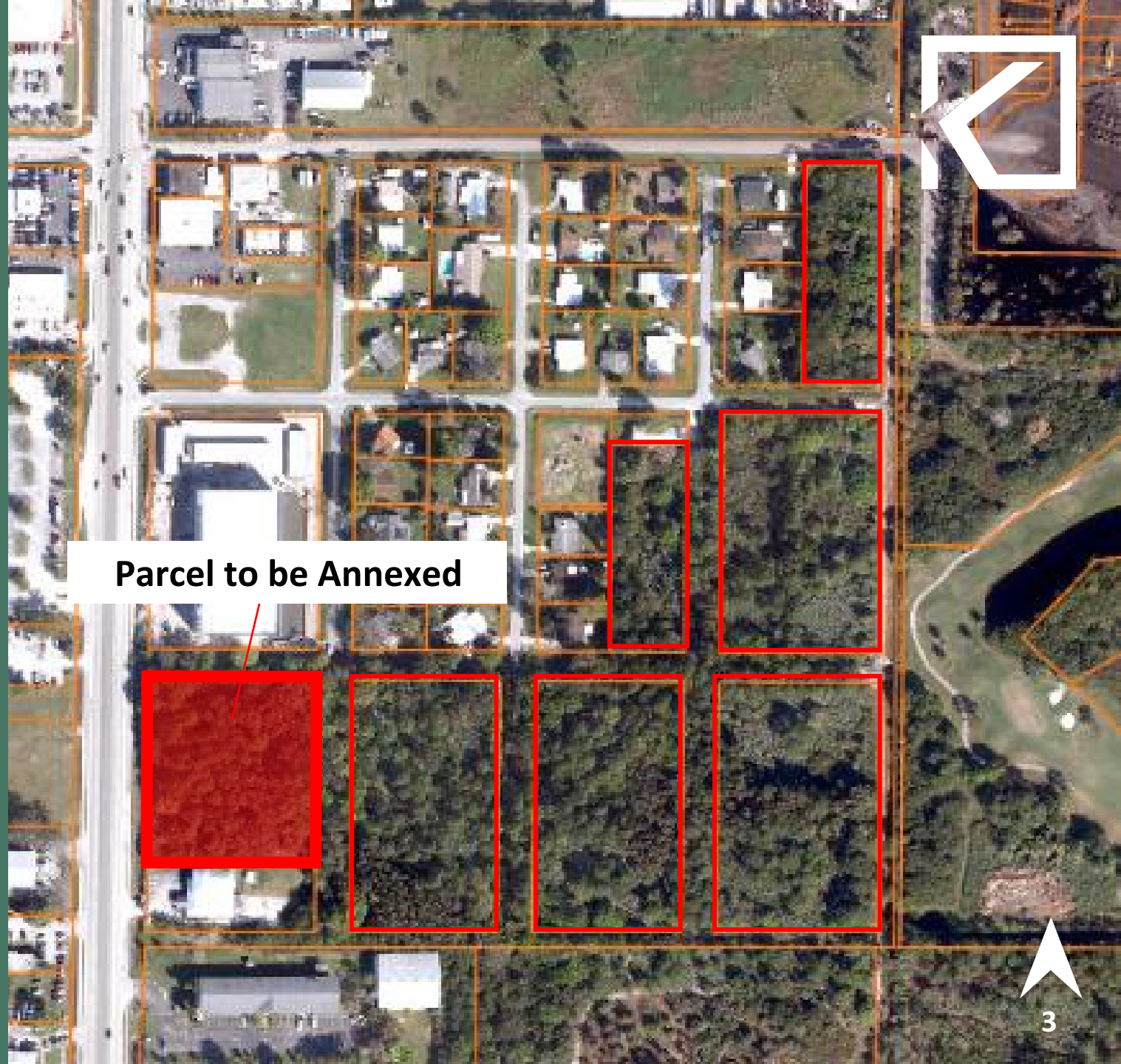
~2.06 acres



Background

Goose Development
Owned Parcels in Fort
Pierce

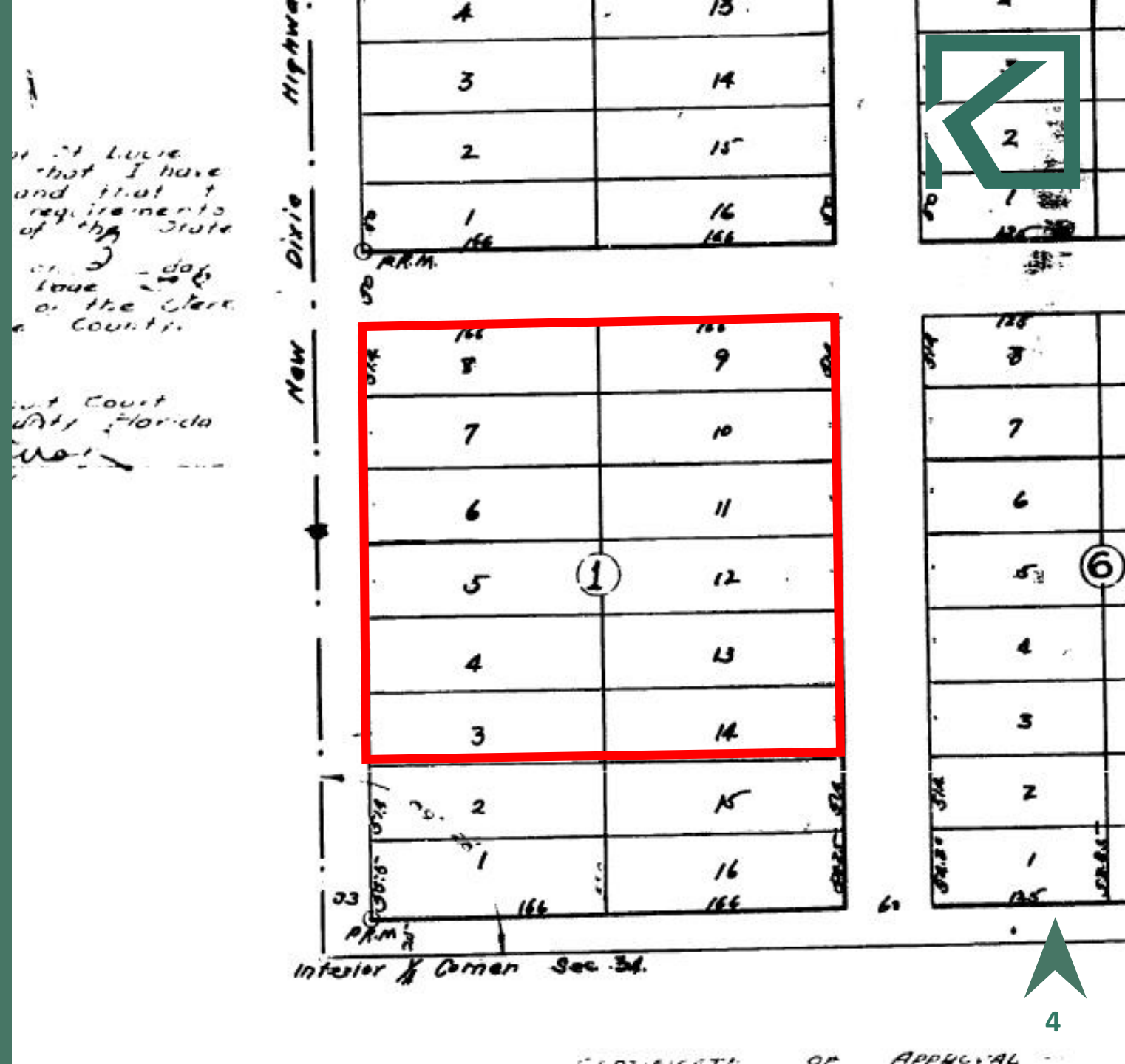
Future PD rezoning &
site plan



Parcel to be Annexed

Background

Platted in the 1920s
as small lots



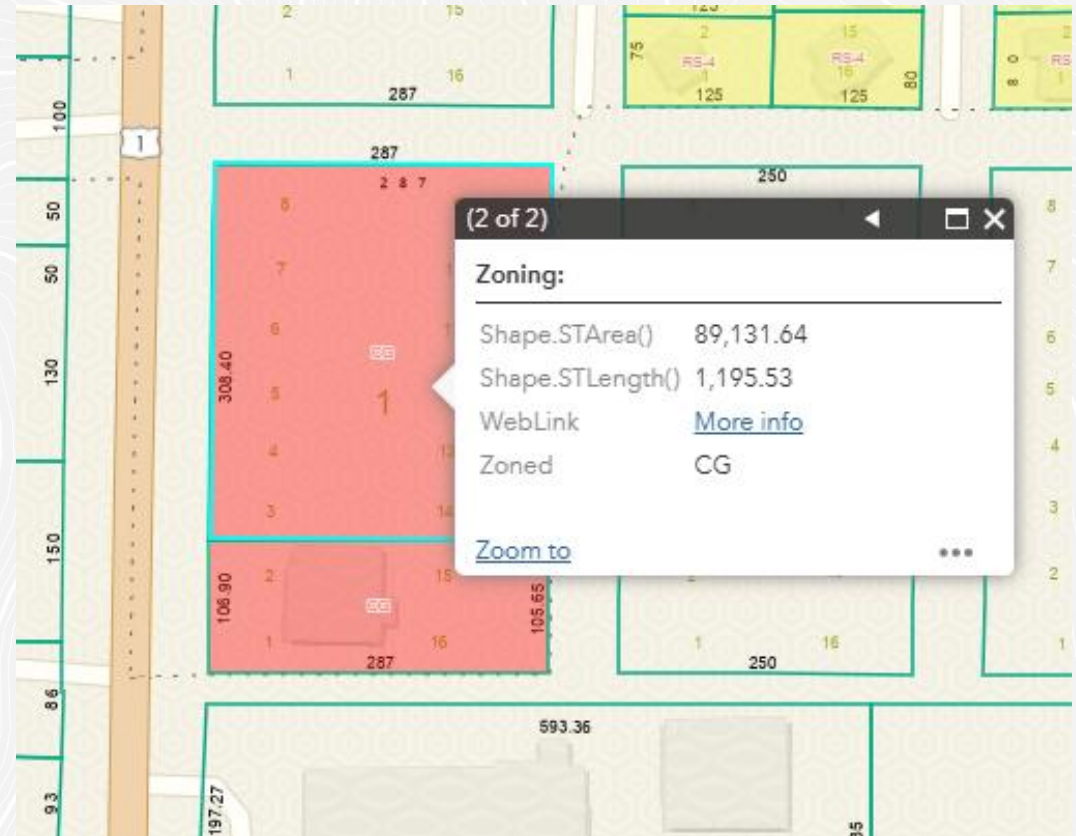
Existing Future Land Use & Zoning



St Lucie County

Future Land Use:
Commercial

Zoning:
Commercial General



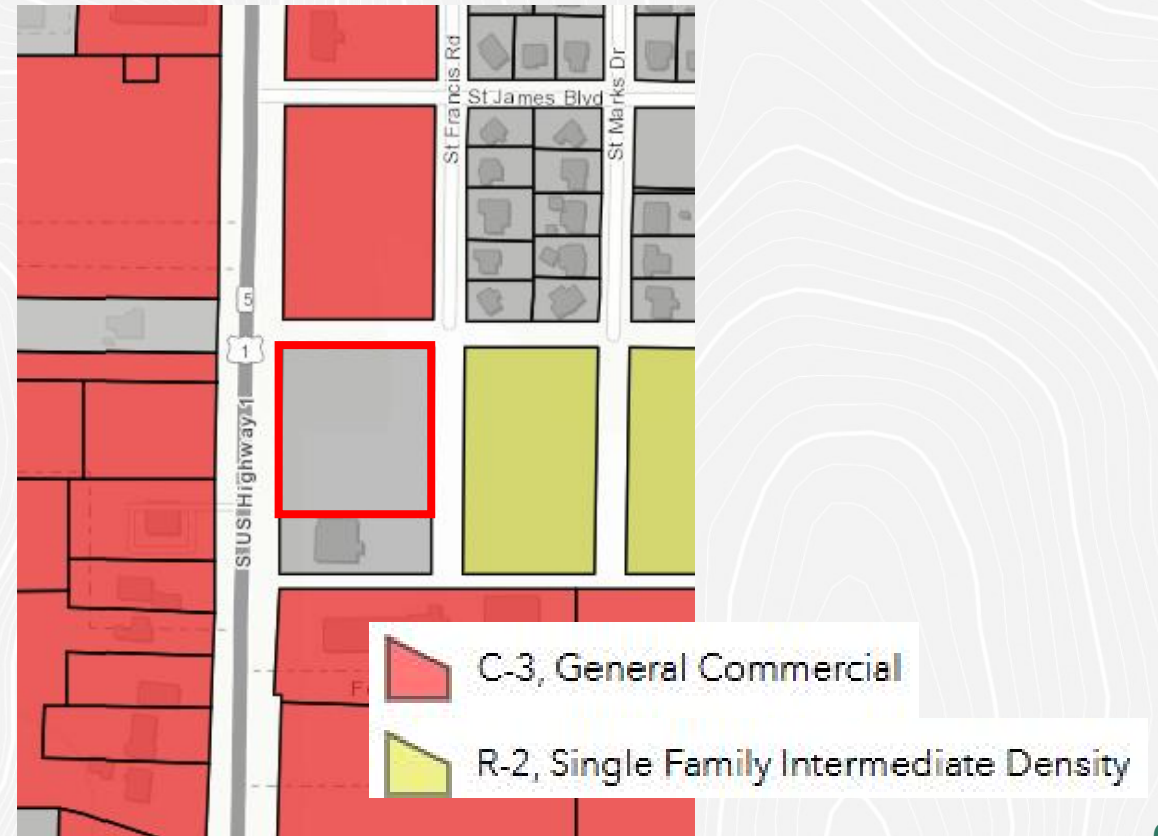
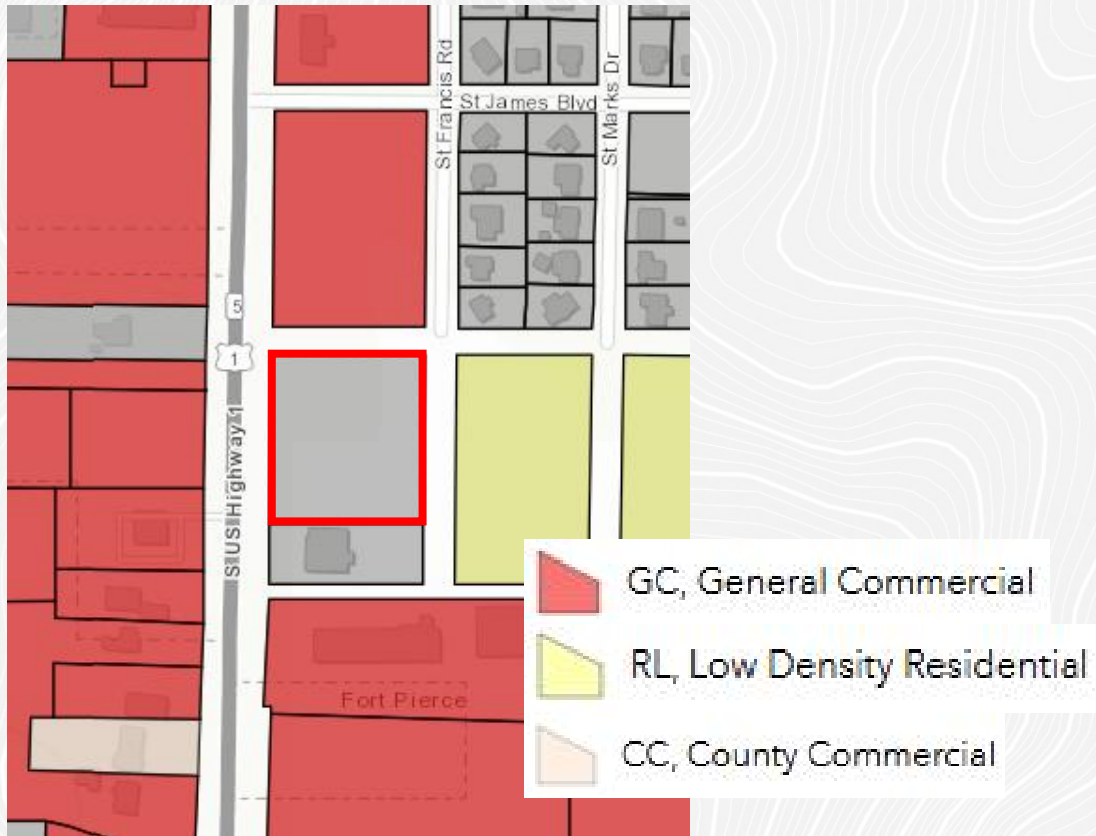


Proposed Future Land Use & Zoning

Fort Pierce

Future Land Use:
Commercial General (CG)

Zoning:
General Commercial (C-3)



Request



We request the parcel be annexed into the
City of Fort Pierce.

- Consistent with surrounding land uses
- Closer to eliminating enclave
- Property taxes to Fort Pierce



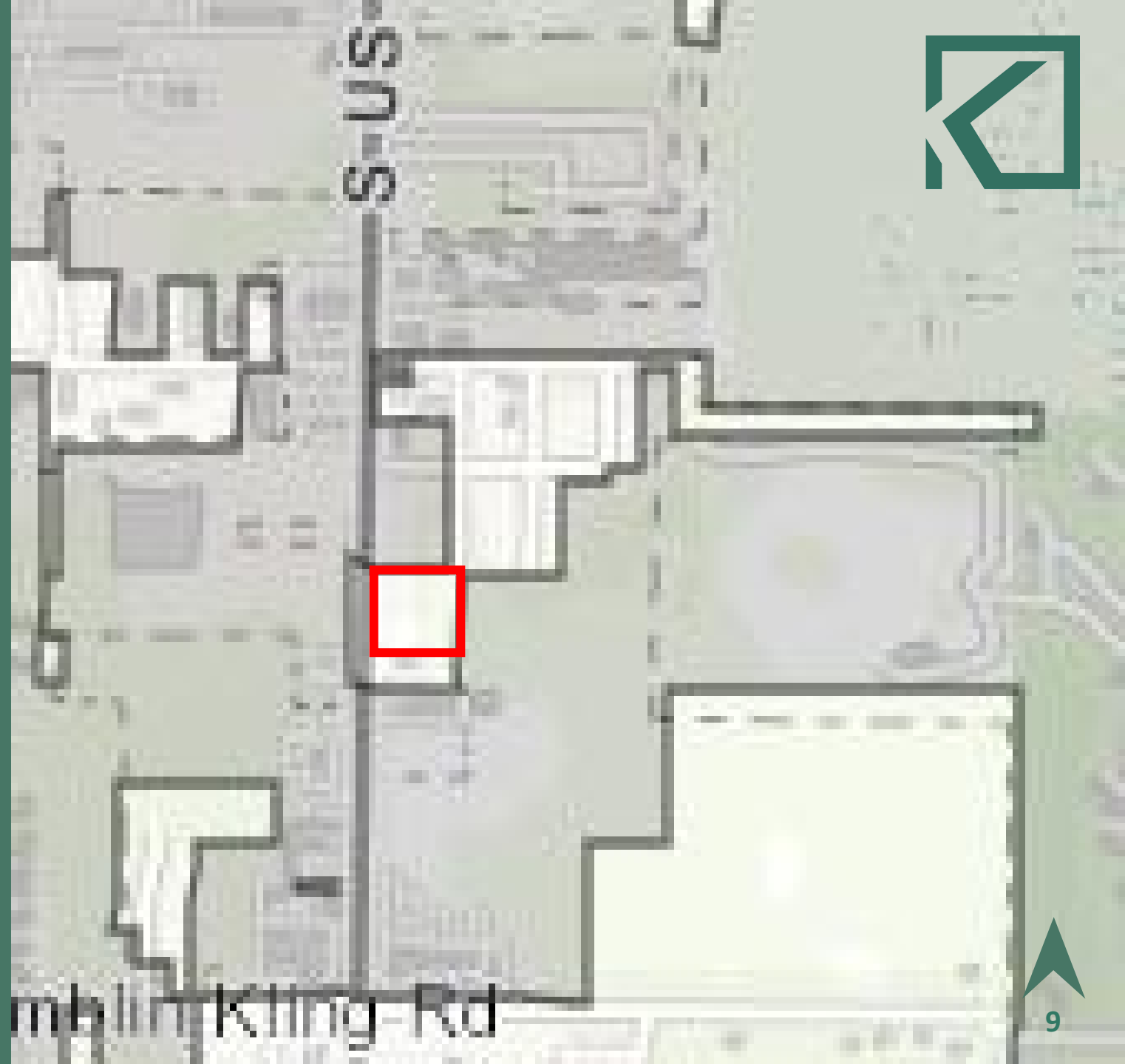
Thank you.



Goose Development Annexation (PZANN2025-0004)

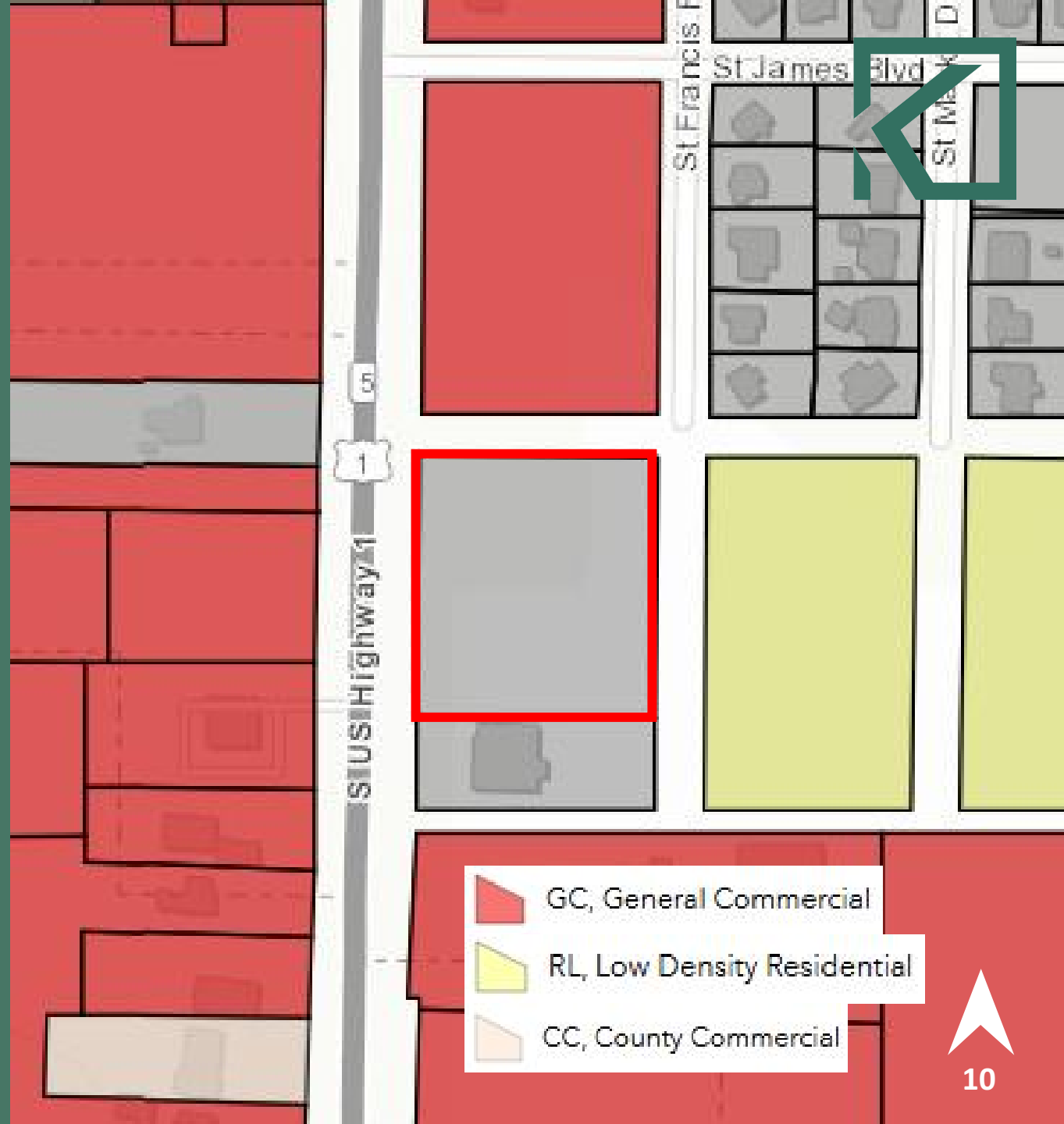
Enclave

Currently in an unincorporated enclave



Proposed Future Land Use

General Commercial (GC)



Proposed Zoning

General Commercial (C-3)

