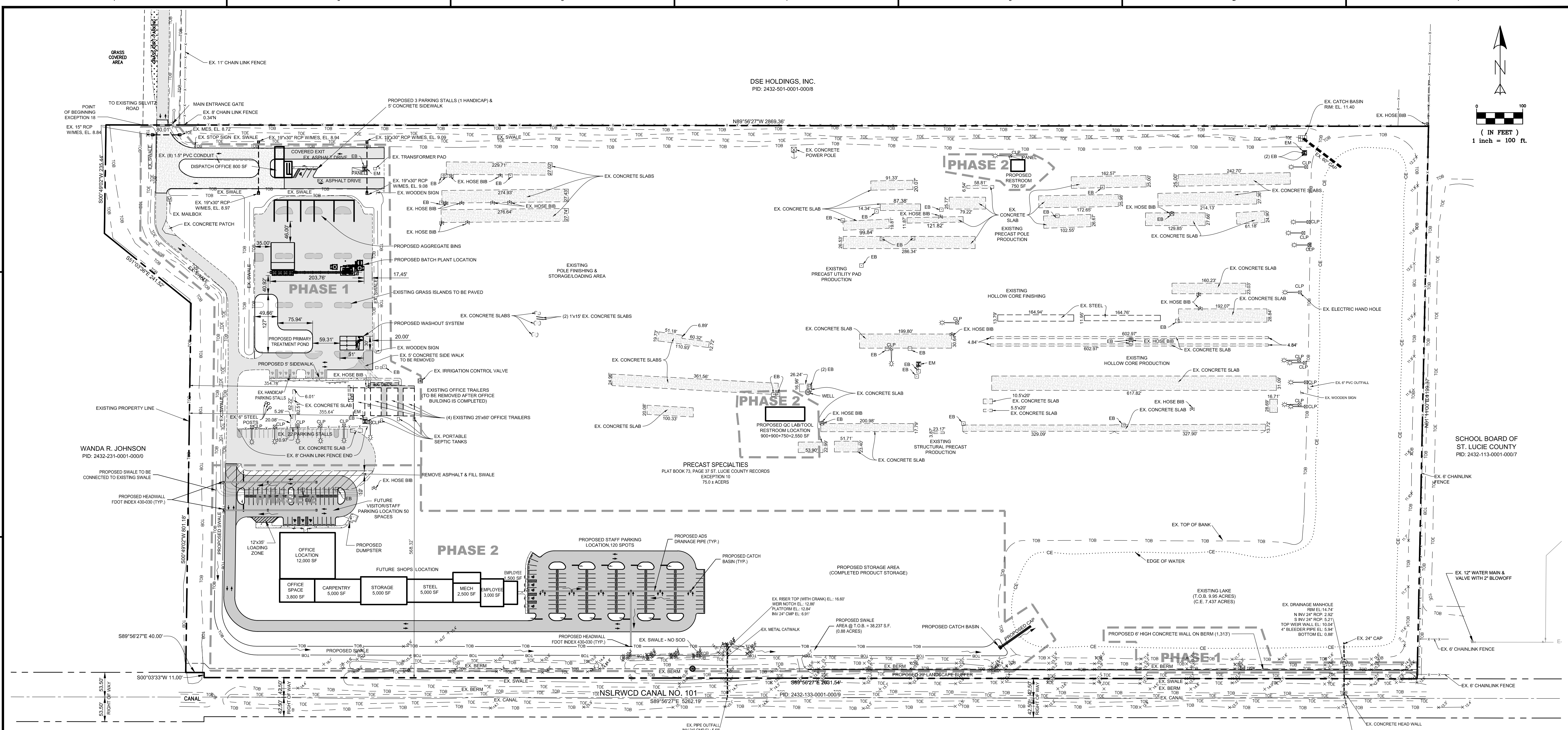


DSE HOLDINGS, INC.
PID: 2432-501-0001-00018



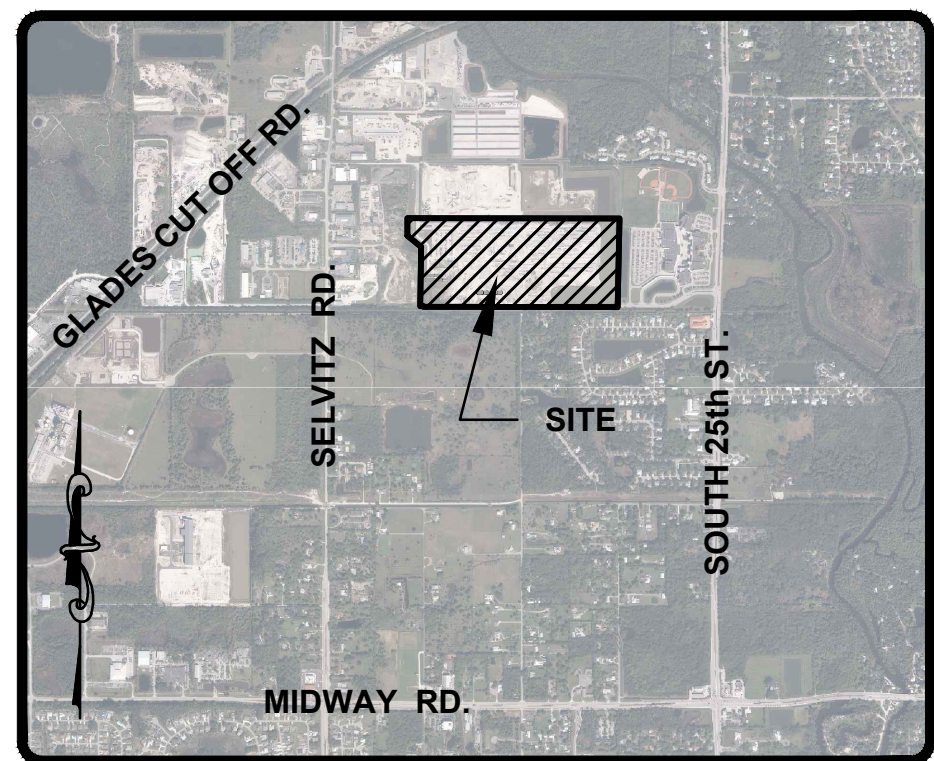
SITE DATA
LEGAL DESCRIPTION
PRECAST SPECIALTIES, ACCORDING TO THE PLAT THEREOF AS RECORDED IN PLAT BOOK 73, PAGES 37 AND 38 OF THE PUBLIC RECORDS OF ST. LUCIE COUNTY FLORIDA.
CONTAINING 75.0 ACRES, MORE OR LESS.

PARCEL ID #: 2432-500-0001-000-5
PROJECT NAME: PRECAST SPECIALTIES, LLC
OWNER: PRECAST SPECIALTIES, LLC

FUTURE LAND USE: HEAVY INDUSTRIAL
ZONING: I-3
LAND SIZE: 3,267,016 S.F. (75 AC)

BUILDING DATA
GROSS SQUARE FOOTAGE: 6,200 S.F. (0.142 AC)
EXISTING OFFICE TRAILERS: 6,200 S.F. (0.142 AC)

STORMWATER DRAINAGE:
THE SURFACE WATER MANAGEMENT SYSTEM FOR THE PROJECT WILL COLLECT SITE RUNOFF IN A SERIES OF INLETS WHICH WILL CONVEY TO AN ONSITE SWALE PRIOR TO DISCHARGING INTO THE EXISTING LAKE. AN EXISTING CONTROL STRUCTURE LOCATED IN THE LAKE PROVIDES WATER QUALITY AND ATTENUATION PRIOR TO DISCHARGING TO THE NSLRWCD CANAL 101



ST. LUCIE COUNTY, FLORIDA
VICINITY MAP N.T.S.

LEGEND			
	EXISTING ELECTRIC PANEL		EXISTING UTILITY POLE
	EXISTING ELECTRIC BOX		EXISTING ELECTRIC METER
	HANDICAP PARKING SYMBOL		EXISTING CONCRETE LIGHT POLE
	EXISTING CONCRETE		EXISTING BENCHMARK (BM) OR GROUND CONTROL POINT (GCP)
	EXISTING PAVEMENT		EXISTING UTILITY POLE
	PROPOSED PAVEMENT		DRAINAGE FLOW ARROW
	PROPOSED CONCRETE		PROPOSED SIGN
	PROPOSED PAVERS		PARKING STALL COUNT

REV	DATE	DESCRIPTION	BY	CHK.
DRAWING ISSUE STATUS				
NOT FOR CONSTRUCTION				
		A DIVISION OF HALEY WARD, INC. 10250 Village Parkway, Suite 201 Port Saint Lucie, Florida 34987 772.462.2455 WWW.HALEYWARD.COM		
		PROJECT: PRECAST SPECIALTIES, LLC CITY OF FORT PIERCE, FLORIDA		

TITLE: **DRAINAGE PLAN**

DATE	SCALE
DEC. 2024	AS NOTED
DRAWN BY: RAH	DESIGNED BY: MDL
CHECKED BY: MDL	
PROJECT No.: 24-226 SITE PLAN.DWG	
1 OF 1	



FILE LOCATION: Z:\DC-2024\24-226- PRECAST SPECIALTIES - SELVITZ RD\ENGINEERING\AUTOCAD\DWG\24-226.DWG, DATE: 2024.03.26, 8:42 AM