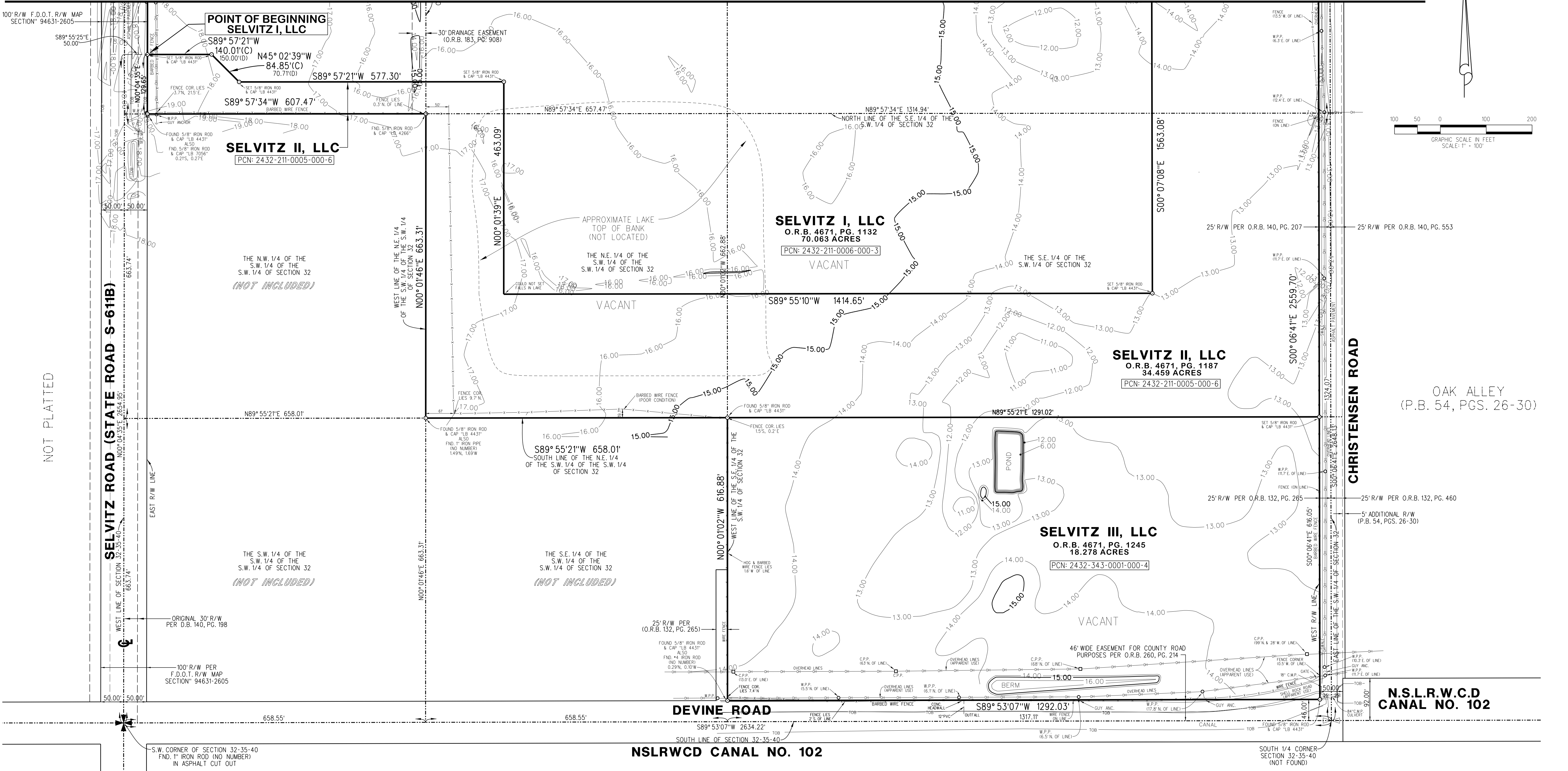
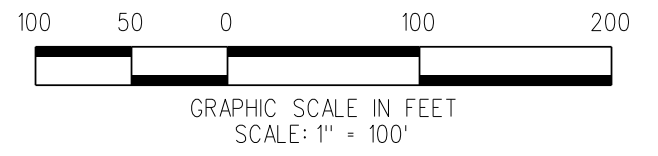
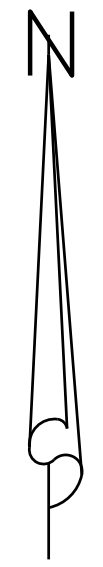


MATCH LINE - SEE SHEET 1



- ABBREVIATIONS:
- CEI - CALCULATED
 - C.B.S. - CONCRETE BLOCK STRUCTURE
 - C.M.B. - COMMISSIONER'S MOUNTED BOOK
 - CM - CONCRETE MANHOLE
 - CMC - CONCRETE
 - D.B. - DEED BOOK
 - F.A. - FORD HYDRAULIC
 - FND - FOUND
 - F.P. - FLUOROPOLYMER & LIGHT
 - IP - IRON PIPE
 - IR - IRON ROD
 - LB - LOCKING BUSINESS
 - LP - LIGHT POLE
 - LS - LOCKING SURVEY
 - MI - MANHOLE
 - MW - MEAN HIGH WATER
 - NR - NON-REMOVABLE
 - NSLRWCD - NORTH ST. LUCE RIVER WATER CONTROL DISTRICT
 - OR - OFFICIAL RECORD BOOK
 - PI - PLAT
 - P.M. - PERMANENT REFERENCE MONUMENT
 - R.O. - RIGHT-OF-WAY
 - R.P. - REINFORCED CONCRETE PIPE
 - R.P.B. - ROAD PLAT BOOK
 - SD - SURVEY
 - SLP - STOP LIGHT POLE
 - SM - SANITARY MANHOLE
 - SSM - SOUTHERN BELL TELEPHONE MANHOLE
 - STW - STORM MANHOLE
 - TB - TRAFFIC BOX
 - TLP - TRAFFIC LIGHT POLE
 - UE - UTILITY EASEMENT
 - WP - WOOD POLE
 - WUP - WOOD UTILITY POLE
 - WV - WATER VALVE

LIDBERG LAND SURVEYING, INC.
 675 West Indiantown Road, Suite 200, Jupiter, Florida 33458 TEL. 561-746-8454

BOUNDARY SURVEY SELVITZ ROAD PARCEL
 PREPARED FOR:
SELVITZ I, LLC; SELVITZ II, LLC; SELVITZ III, LLC

CD:	K:\UST\323540\13-040\13-040-101\13-040-101.DGN		
REF:			
FLD:	J.P.	FB:	PG.
OFF:	CASASUS	638	75-80
CKD:	D.C.L.	SHEET	2 OF 2
DATE:	APRIL 16, 2013		JOB: 13-040-101
DWG:	D13-040		