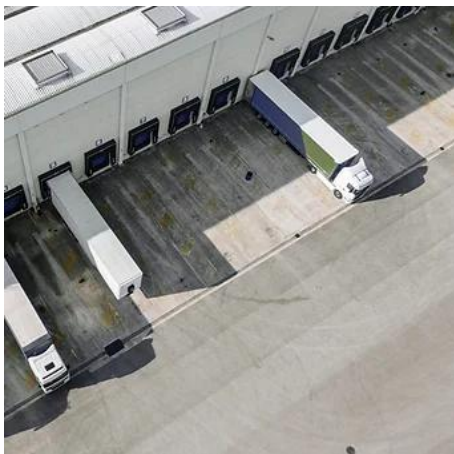
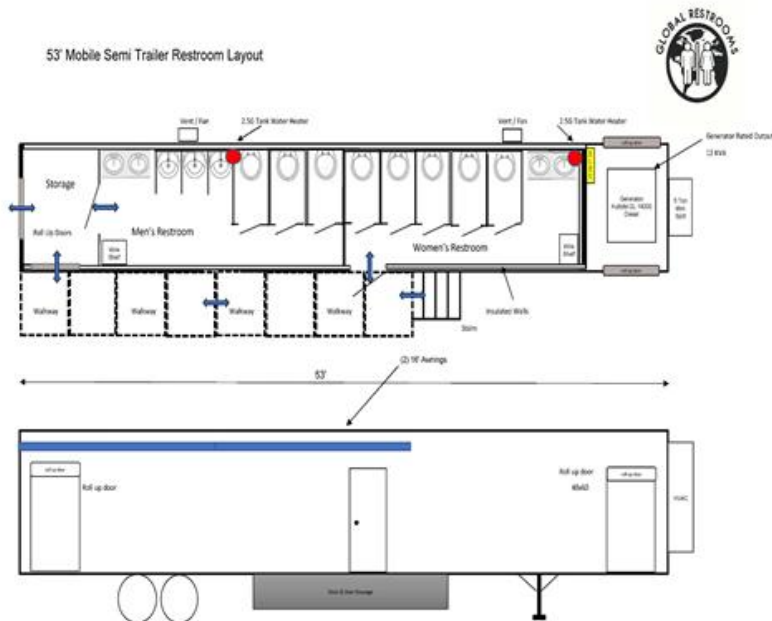


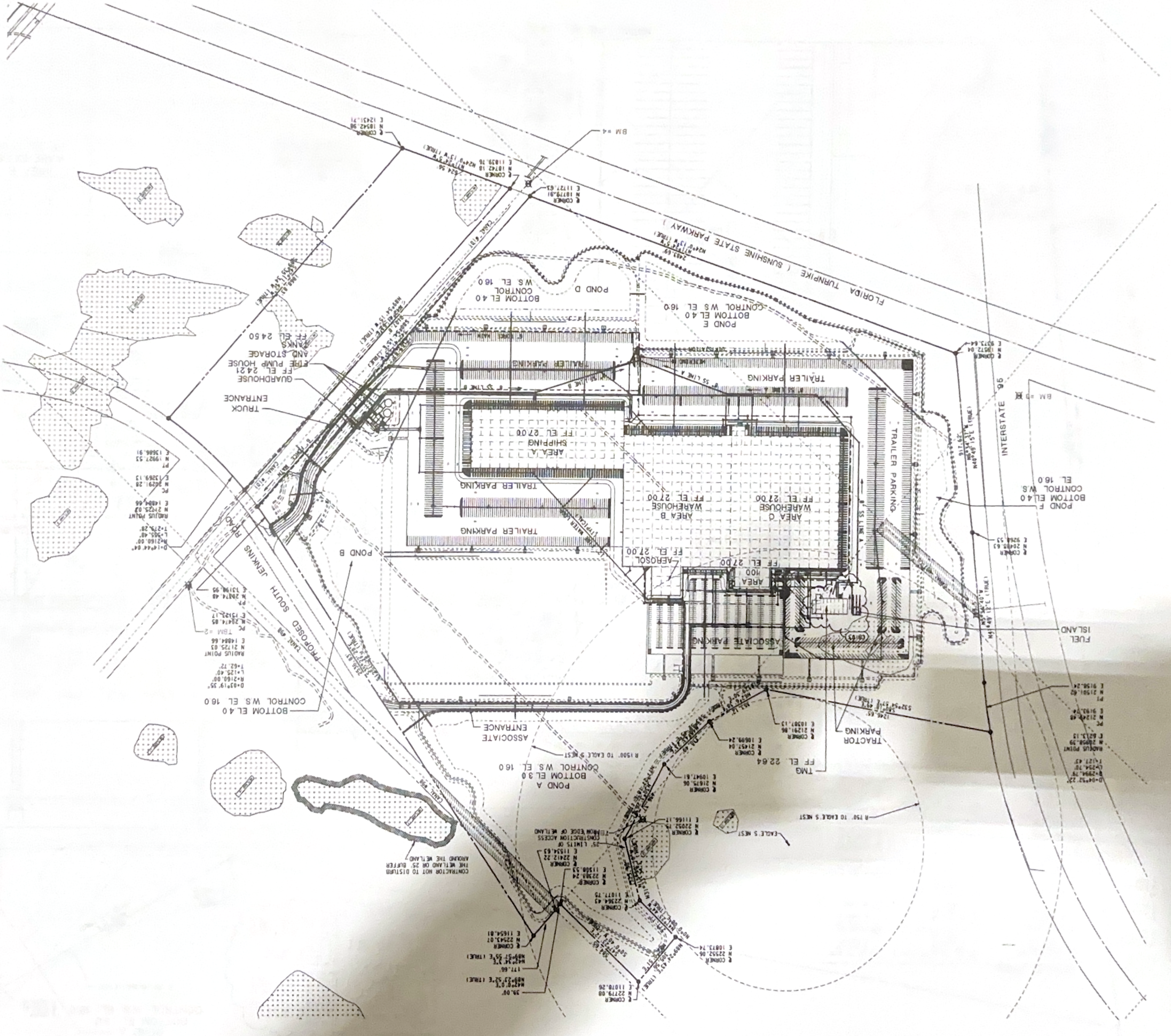
NARRATIVE

There will be 8 toilets and 3 urinals per each restroom trailer for the CDL truck drivers to use when they arrive to the Walmart Distribution Center with deliveries or to pick up loads of merchandise.

The dimensions per each trailer are 14' tall x 53' long x 9' wide (without truck). Each trailer is dock-ready and specifically made for dock work such as what you see in the illustrations below with a trailer backed-up to a dock with restrooms inside.



1. ALL ELEVATIONS ON PLANS ARE BASED ON DATUM.
 2. HIGHER THAN NAVD 88.
 3. HIGHER THAN NAVD 88.
 4. HIGHER THAN NAVD 88.
 5. HIGHER THAN NAVD 88.
 6. HIGHER THAN NAVD 88.
 7. HIGHER THAN NAVD 88.
 8. HIGHER THAN NAVD 88.
 9. HIGHER THAN NAVD 88.
 10. HIGHER THAN NAVD 88.
 11. HIGHER THAN NAVD 88.
 12. HIGHER THAN NAVD 88.
 13. HIGHER THAN NAVD 88.
 14. HIGHER THAN NAVD 88.
 15. HIGHER THAN NAVD 88.
 16. HIGHER THAN NAVD 88.
 17. HIGHER THAN NAVD 88.
 18. HIGHER THAN NAVD 88.
 19. HIGHER THAN NAVD 88.
 20. HIGHER THAN NAVD 88.
 21. HIGHER THAN NAVD 88.
 22. HIGHER THAN NAVD 88.
 23. HIGHER THAN NAVD 88.
 24. HIGHER THAN NAVD 88.
 25. HIGHER THAN NAVD 88.
 26. HIGHER THAN NAVD 88.
 27. HIGHER THAN NAVD 88.
 28. HIGHER THAN NAVD 88.
 29. HIGHER THAN NAVD 88.
 30. HIGHER THAN NAVD 88.
 31. HIGHER THAN NAVD 88.
 32. HIGHER THAN NAVD 88.
 33. HIGHER THAN NAVD 88.
 34. HIGHER THAN NAVD 88.
 35. HIGHER THAN NAVD 88.
 36. HIGHER THAN NAVD 88.
 37. HIGHER THAN NAVD 88.
 38. HIGHER THAN NAVD 88.
 39. HIGHER THAN NAVD 88.
 40. HIGHER THAN NAVD 88.
 41. HIGHER THAN NAVD 88.
 42. HIGHER THAN NAVD 88.
 43. HIGHER THAN NAVD 88.
 44. HIGHER THAN NAVD 88.
 45. HIGHER THAN NAVD 88.
 46. HIGHER THAN NAVD 88.
 47. HIGHER THAN NAVD 88.
 48. HIGHER THAN NAVD 88.
 49. HIGHER THAN NAVD 88.
 50. HIGHER THAN NAVD 88.
 51. HIGHER THAN NAVD 88.
 52. HIGHER THAN NAVD 88.
 53. HIGHER THAN NAVD 88.
 54. HIGHER THAN NAVD 88.
 55. HIGHER THAN NAVD 88.
 56. HIGHER THAN NAVD 88.
 57. HIGHER THAN NAVD 88.
 58. HIGHER THAN NAVD 88.
 59. HIGHER THAN NAVD 88.
 60. HIGHER THAN NAVD 88.
 61. HIGHER THAN NAVD 88.
 62. HIGHER THAN NAVD 88.
 63. HIGHER THAN NAVD 88.
 64. HIGHER THAN NAVD 88.
 65. HIGHER THAN NAVD 88.
 66. HIGHER THAN NAVD 88.
 67. HIGHER THAN NAVD 88.
 68. HIGHER THAN NAVD 88.
 69. HIGHER THAN NAVD 88.
 70. HIGHER THAN NAVD 88.
 71. HIGHER THAN NAVD 88.
 72. HIGHER THAN NAVD 88.
 73. HIGHER THAN NAVD 88.
 74. HIGHER THAN NAVD 88.
 75. HIGHER THAN NAVD 88.
 76. HIGHER THAN NAVD 88.
 77. HIGHER THAN NAVD 88.
 78. HIGHER THAN NAVD 88.
 79. HIGHER THAN NAVD 88.
 80. HIGHER THAN NAVD 88.
 81. HIGHER THAN NAVD 88.
 82. HIGHER THAN NAVD 88.
 83. HIGHER THAN NAVD 88.
 84. HIGHER THAN NAVD 88.
 85. HIGHER THAN NAVD 88.
 86. HIGHER THAN NAVD 88.
 87. HIGHER THAN NAVD 88.
 88. HIGHER THAN NAVD 88.
 89. HIGHER THAN NAVD 88.
 90. HIGHER THAN NAVD 88.
 91. HIGHER THAN NAVD 88.
 92. HIGHER THAN NAVD 88.
 93. HIGHER THAN NAVD 88.
 94. HIGHER THAN NAVD 88.
 95. HIGHER THAN NAVD 88.
 96. HIGHER THAN NAVD 88.
 97. HIGHER THAN NAVD 88.
 98. HIGHER THAN NAVD 88.
 99. HIGHER THAN NAVD 88.
 100. HIGHER THAN NAVD 88.



1 OVERALL - UTILITY PLAN

SCALE: 1" = 200'

GRAPHIC SCALE IN FEET

TRUE NORTH
PLAN 47° 23' 52"

M. William Kochel, Senior Project Manager
 This plan, with the attached conditions, is a complete work.
 7901 SW 6th Court
 Plantation, Florida 33324
 Telephone: (954) 585-4000
 Centex Engineering & Construction
 Ft. Pierce, Florida Job #670
 Regional Distribution Center #7038
 Date: 6-14-04

PROJECT RECORD
Job #670

OVERALL - UTILITY PLAN

WAL-MART
REGIONAL DISTRIBUTION CENTER NO 7038
FORT PIERCE, FLORIDA

NO.	DATE	ISSUE	ISSUED FOR	BY
1	01/18/03	ISSUE FOR PERMITS	FOR PERMITS	...
2	02/21/03	ISSUE FOR PERMITS	FOR PERMITS	...
3	03/13/03	ISSUE FOR PERMITS	FOR PERMITS	...
4	03/13/03	ISSUE FOR PERMITS	FOR PERMITS	...
5	04/15/03	ISSUE FOR PERMITS	FOR PERMITS	...

BENCH MARKS
 TM #1
 ELEV. 15.49
 N 21954.20
 E 11064.83
 3/8" I.R. & C., LB2856
 TM #2
 ELEV. 17.45
 N 20769.76
 E 13561.33
 3/8" I.R. & C., LB2856
 B.M. #3
 ELEV. 46.16
 N 19786.66
 E 9029.68
 B.M. #4
 ELEV. 15.20
 N 18715.81
 E 11738.97

Carter-Burgess
 Consultants in Planning, Architecture, Engineering,
 Construction, Contracting, Surveying and Related Services
 777 West Street, Fort Pierce, Florida 34949
 (888) 233-2800 Fax (888) 233-4200
 Carter & Burgess, Inc. is an Equal Opportunity Employer

NO.	DATE	ISSUE FOR PERMIT	ISSUE FOR CONSTRUCTION	ISSUE FOR SITE PLAN APPROVAL
1	01/18/03	ISSUE FOR PERMIT		
2	02/17/03	ISSUE FOR PERMIT		
3	03/13/03	ISSUE FOR PERMIT		
4	04/17/03	ISSUE FOR PERMIT		
5	06/02/03	ISSUE FOR PERMIT		
6	06/02/03	ISSUE FOR PERMIT		
7	06/02/03	ISSUE FOR PERMIT		
8	06/02/03	ISSUE FOR PERMIT		
9	06/02/03	ISSUE FOR PERMIT		
10	06/02/03	ISSUE FOR PERMIT		

WAL-MART
REGIONAL DISTRIBUTION CENTER NO 7038
FORT PIERCE, FLORIDA

AREA 2 - UTILITY PLAN

PROJECT RECORD
Job #670
Date: 6-16-04

Regional Distribution Center #7038
Fort Pierce, Florida Job #670
Center Engineering & Construction
Telephone: (854) 565-4000
7901 SW 6th Court
Tampa, Florida 33624
This plan, with its attachments, is prepared for the project described above and is not to be used for any other project without the written consent of Center Engineering & Construction.

M. W. Young, P.E., Senior Project Manager

Notes:
1. ALL ELEVATIONS ON PLANS ARE BASED AND MUST BE CONSTRUCTED ON NAVD 83 DATUM.
2. MVD 29 IS 1.48' HIGHER THAN NAVD 83 DATUM.

BENCH MARKS:
TBM #1
I.R. & C., "LB2856"
ELEV. 15.49
N 21954.20
E 11064.83
TBM #2
I.R. & C., "LB2856"
ELEV. 17.45
N 20769.76
E 13561.33
B.M. #3
DISK IN CONC., 195-Y-13
ELEV. 46.16
N 19786.66
E 9229.68
B.M. #4
I.R. & C., "LB2856"
ELEV. 15.20
N 18715.81
E 11738.97

Sanitary Sewer Manhole Data:
S5 MH #104
STA. 20+41.96 - LINE A
N 20479.90
E 10894.34
RIM EL. = 22.61
S5 MH #105
STA. 20+49.39 - LINE A
N 20479.90
E 10894.34
RIM EL. = 22.61
S5 MH #106
STA. 20+57.82 - LINE A
N 20479.90
E 10894.34
RIM EL. = 22.61
S5 MH #107
STA. 20+66.25 - LINE A
N 20479.90
E 10894.34
RIM EL. = 22.61
S5 MH #108
STA. 20+74.68 - LINE A
N 20479.90
E 10894.34
RIM EL. = 22.61
S5 MH #109
STA. 20+83.11 - LINE A
N 20479.90
E 10894.34
RIM EL. = 22.61
S5 MH #110
STA. 20+91.54 - LINE A
N 20479.90
E 10894.34
RIM EL. = 22.61
S5 MH #111
STA. 20+100.00 - LINE A
N 20479.90
E 10894.34
RIM EL. = 22.61
S5 MH #112
STA. 20+108.43 - LINE A
N 20479.90
E 10894.34
RIM EL. = 22.61
S5 MH #113
STA. 20+116.86 - LINE A
N 20479.90
E 10894.34
RIM EL. = 22.61
S5 MH #114
STA. 20+125.29 - LINE A
N 20479.90
E 10894.34
RIM EL. = 22.61
S5 MH #115
STA. 20+133.72 - LINE A
N 20479.90
E 10894.34
RIM EL. = 22.61
S5 MH #116
STA. 20+142.15 - LINE A
N 20479.90
E 10894.34
RIM EL. = 22.61
S5 MH #117
STA. 20+150.58 - LINE A
N 20479.90
E 10894.34
RIM EL. = 22.61
S5 MH #118
STA. 20+159.01 - LINE A
N 20479.90
E 10894.34
RIM EL. = 22.61
S5 MH #119
STA. 20+167.44 - LINE A
N 20479.90
E 10894.34
RIM EL. = 22.61
S5 MH #120
STA. 20+175.87 - LINE A
N 20479.90
E 10894.34
RIM EL. = 22.61
S5 MH #121
STA. 20+184.30 - LINE A
N 20479.90
E 10894.34
RIM EL. = 22.61
S5 MH #122
STA. 20+192.73 - LINE A
N 20479.90
E 10894.34
RIM EL. = 22.61
S5 MH #123
STA. 20+201.16 - LINE A
N 20479.90
E 10894.34
RIM EL. = 22.61
S5 MH #124
STA. 20+209.59 - LINE A
N 20479.90
E 10894.34
RIM EL. = 22.61
S5 MH #125
STA. 20+218.02 - LINE A
N 20479.90
E 10894.34
RIM EL. = 22.61
S5 MH #126
STA. 20+226.45 - LINE A
N 20479.90
E 10894.34
RIM EL. = 22.61
S5 MH #127
STA. 20+234.88 - LINE A
N 20479.90
E 10894.34
RIM EL. = 22.61
S5 MH #128
STA. 20+243.31 - LINE A
N 20479.90
E 10894.34
RIM EL. = 22.61
S5 MH #129
STA. 20+251.74 - LINE A
N 20479.90
E 10894.34
RIM EL. = 22.61
S5 MH #130
STA. 20+260.17 - LINE A
N 20479.90
E 10894.34
RIM EL. = 22.61
S5 MH #131
STA. 20+268.60 - LINE A
N 20479.90
E 10894.34
RIM EL. = 22.61
S5 MH #132
STA. 20+277.03 - LINE A
N 20479.90
E 10894.34
RIM EL. = 22.61
S5 MH #133
STA. 20+285.46 - LINE A
N 20479.90
E 10894.34
RIM EL. = 22.61
S5 MH #134
STA. 20+293.89 - LINE A
N 20479.90
E 10894.34
RIM EL. = 22.61
S5 MH #135
STA. 20+302.32 - LINE A
N 20479.90
E 10894.34
RIM EL. = 22.61
S5 MH #136
STA. 20+310.75 - LINE A
N 20479.90
E 10894.34
RIM EL. = 22.61
S5 MH #137
STA. 20+319.18 - LINE A
N 20479.90
E 10894.34
RIM EL. = 22.61
S5 MH #138
STA. 20+327.61 - LINE A
N 20479.90
E 10894.34
RIM EL. = 22.61
S5 MH #139
STA. 20+336.04 - LINE A
N 20479.90
E 10894.34
RIM EL. = 22.61
S5 MH #140
STA. 20+344.47 - LINE A
N 20479.90
E 10894.34
RIM EL. = 22.61
S5 MH #141
STA. 20+352.90 - LINE A
N 20479.90
E 10894.34
RIM EL. = 22.61
S5 MH #142
STA. 20+361.33 - LINE A
N 20479.90
E 10894.34
RIM EL. = 22.61
S5 MH #143
STA. 20+369.76 - LINE A
N 20479.90
E 10894.34
RIM EL. = 22.61
S5 MH #144
STA. 20+378.19 - LINE A
N 20479.90
E 10894.34
RIM EL. = 22.61
S5 MH #145
STA. 20+386.62 - LINE A
N 20479.90
E 10894.34
RIM EL. = 22.61
S5 MH #146
STA. 20+395.05 - LINE A
N 20479.90
E 10894.34
RIM EL. = 22.61
S5 MH #147
STA. 20+403.48 - LINE A
N 20479.90
E 10894.34
RIM EL. = 22.61
S5 MH #148
STA. 20+411.91 - LINE A
N 20479.90
E 10894.34
RIM EL. = 22.61
S5 MH #149
STA. 20+420.34 - LINE A
N 20479.90
E 10894.34
RIM EL. = 22.61
S5 MH #150
STA. 20+428.77 - LINE A
N 20479.90
E 10894.34
RIM EL. = 22.61
S5 MH #151
STA. 20+437.20 - LINE A
N 20479.90
E 10894.34
RIM EL. = 22.61
S5 MH #152
STA. 20+445.63 - LINE A
N 20479.90
E 10894.34
RIM EL. = 22.61
S5 MH #153
STA. 20+454.06 - LINE A
N 20479.90
E 10894.34
RIM EL. = 22.61
S5 MH #154
STA. 20+462.49 - LINE A
N 20479.90
E 10894.34
RIM EL. = 22.61
S5 MH #155
STA. 20+470.92 - LINE A
N 20479.90
E 10894.34
RIM EL. = 22.61
S5 MH #156
STA. 20+479.35 - LINE A
N 20479.90
E 10894.34
RIM EL. = 22.61
S5 MH #157
STA. 20+487.78 - LINE A
N 20479.90
E 10894.34
RIM EL. = 22.61
S5 MH #158
STA. 20+496.21 - LINE A
N 20479.90
E 10894.34
RIM EL. = 22.61
S5 MH #159
STA. 20+504.64 - LINE A
N 20479.90
E 10894.34
RIM EL. = 22.61
S5 MH #160
STA. 20+513.07 - LINE A
N 20479.90
E 10894.34
RIM EL. = 22.61
S5 MH #161
STA. 20+521.50 - LINE A
N 20479.90
E 10894.34
RIM EL. = 22.61
S5 MH #162
STA. 20+529.93 - LINE A
N 20479.90
E 10894.34
RIM EL. = 22.61
S5 MH #163
STA. 20+538.36 - LINE A
N 20479.90
E 10894.34
RIM EL. = 22.61
S5 MH #164
STA. 20+546.79 - LINE A
N 20479.90
E 10894.34
RIM EL. = 22.61
S5 MH #165
STA. 20+555.22 - LINE A
N 20479.90
E 10894.34
RIM EL. = 22.61
S5 MH #166
STA. 20+563.65 - LINE A
N 20479.90
E 10894.34
RIM EL. = 22.61
S5 MH #167
STA. 20+572.08 - LINE A
N 20479.90
E 10894.34
RIM EL. = 22.61
S5 MH #168
STA. 20+580.51 - LINE A
N 20479.90
E 10894.34
RIM EL. = 22.61
S5 MH #169
STA. 20+588.94 - LINE A
N 20479.90
E 10894.34
RIM EL. = 22.61
S5 MH #170
STA. 20+597.37 - LINE A
N 20479.90
E 10894.34
RIM EL. = 22.61
S5 MH #171
STA. 20+605.80 - LINE A
N 20479.90
E 10894.34
RIM EL. = 22.61
S5 MH #172
STA. 20+614.23 - LINE A
N 20479.90
E 10894.34
RIM EL. = 22.61
S5 MH #173
STA. 20+622.66 - LINE A
N 20479.90
E 10894.34
RIM EL. = 22.61
S5 MH #174
STA. 20+631.09 - LINE A
N 20479.90
E 10894.34
RIM EL. = 22.61
S5 MH #175
STA. 20+639.52 - LINE A
N 20479.90
E 10894.34
RIM EL. = 22.61
S5 MH #176
STA. 20+647.95 - LINE A
N 20479.90
E 10894.34
RIM EL. = 22.61
S5 MH #177
STA. 20+656.38 - LINE A
N 20479.90
E 10894.34
RIM EL. = 22.61
S5 MH #178
STA. 20+664.81 - LINE A
N 20479.90
E 10894.34
RIM EL. = 22.61
S5 MH #179
STA. 20+673.24 - LINE A
N 20479.90
E 10894.34
RIM EL. = 22.61
S5 MH #180
STA. 20+681.67 - LINE A
N 20479.90
E 10894.34
RIM EL. = 22.61
S5 MH #181
STA. 20+690.10 - LINE A
N 20479.90
E 10894.34
RIM EL. = 22.61
S5 MH #182
STA. 20+698.53 - LINE A
N 20479.90
E 10894.34
RIM EL. = 22.61
S5 MH #183
STA. 20+706.96 - LINE A
N 20479.90
E 10894.34
RIM EL. = 22.61
S5 MH #184
STA. 20+715.39 - LINE A
N 20479.90
E 10894.34
RIM EL. = 22.61
S5 MH #185
STA. 20+723.82 - LINE A
N 20479.90
E 10894.34
RIM EL. = 22.61
S5 MH #186
STA. 20+732.25 - LINE A
N 20479.90
E 10894.34
RIM EL. = 22.61
S5 MH #187
STA. 20+740.68 - LINE A
N 20479.90
E 10894.34
RIM EL. = 22.61
S5 MH #188
STA. 20+749.11 - LINE A
N 20479.90
E 10894.34
RIM EL. = 22.61
S5 MH #189
STA. 20+757.54 - LINE A
N 20479.90
E 10894.34
RIM EL. = 22.61
S5 MH #190
STA. 20+765.97 - LINE A
N 20479.90
E 10894.34
RIM EL. = 22.61
S5 MH #191
STA. 20+774.40 - LINE A
N 20479.90
E 10894.34
RIM EL. = 22.61
S5 MH #192
STA. 20+782.83 - LINE A
N 20479.90
E 10894.34
RIM EL. = 22.61
S5 MH #193
STA. 20+791.26 - LINE A
N 20479.90
E 10894.34
RIM EL. = 22.61
S5 MH #194
STA. 20+799.69 - LINE A
N 20479.90
E 10894.34
RIM EL. = 22.61
S5 MH #195
STA. 20+808.12 - LINE A
N 20479.90
E 10894.34
RIM EL. = 22.61
S5 MH #196
STA. 20+816.55 - LINE A
N 20479.90
E 10894.34
RIM EL. = 22.61
S5 MH #197
STA. 20+824.98 - LINE A
N 20479.90
E 10894.34
RIM EL. = 22.61
S5 MH #198
STA. 20+833.41 - LINE A
N 20479.90
E 10894.34
RIM EL. = 22.61
S5 MH #199
STA. 20+841.84 - LINE A
N 20479.90
E 10894.34
RIM EL. = 22.61
S5 MH #200
STA. 20+850.27 - LINE A
N 20479.90
E 10894.34
RIM EL. = 22.61
S5 MH #201
STA. 20+858.70 - LINE A
N 20479.90
E 10894.34
RIM EL. = 22.61
S5 MH #202
STA. 20+867.13 - LINE A
N 20479.90
E 10894.34
RIM EL. = 22.61
S5 MH #203
STA. 20+875.56 - LINE A
N 20479.90
E 10894.34
RIM EL. = 22.61
S5 MH #204
STA. 20+883.99 - LINE A
N 20479.90
E 10894.34
RIM EL. = 22.61
S5 MH #205
STA. 20+892.42 - LINE A
N 20479.90
E 10894.34
RIM EL. = 22.61
S5 MH #206
STA. 20+900.85 - LINE A
N 20479.90
E 10894.34
RIM EL. = 22.61
S5 MH #207
STA. 20+909.28 - LINE A
N 20479.90
E 10894.34
RIM EL. = 22.61
S5 MH #208
STA. 20+917.71 - LINE A
N 20479.90
E 10894.34
RIM EL. = 22.61
S5 MH #209
STA. 20+926.14 - LINE A
N 20479.90
E 10894.34
RIM EL. = 22.61
S5 MH #210
STA. 20+934.57 - LINE A
N 20479.90
E 10894.34
RIM EL. = 22.61
S5 MH #211
STA. 20+943.00 - LINE A
N 20479.90
E 10894.34
RIM EL. = 22.61
S5 MH #212
STA. 20+951.43 - LINE A
N 20479.90
E 10894.34
RIM EL. = 22.61
S5 MH #213
STA. 20+959.86 - LINE A
N 20479.90
E 10894.34
RIM EL. = 22.61
S5 MH #214
STA. 20+968.29 - LINE A
N 20479.90
E 10894.34
RIM EL. = 22.61
S5 MH #215
STA. 20+976.72 - LINE A
N 20479.90
E 10894.34
RIM EL. = 22.61
S5 MH #216
STA. 20+985.15 - LINE A
N 20479.90
E 10894.34
RIM EL. = 22.61
S5 MH #217
STA. 20+993.58 - LINE A
N 20479.90
E 10894.34
RIM EL. = 22.61
S5 MH #218
STA. 20+1002.01 - LINE A
N 20479.90
E 10894.34
RIM EL. = 22.61
S5 MH #219
STA. 20+1010.44 - LINE A
N 20479.90
E 10894.34
RIM EL. = 22.61
S5 MH #220
STA. 20+1018.87 - LINE A
N 20479.90
E 10894.34
RIM EL. = 22.61
S5 MH #221
STA. 20+1027.30 - LINE A
N 20479.90
E 10894.34
RIM EL. = 22.61
S5 MH #222
STA. 20+1035.73 - LINE A
N 20479.90
E 10894.34
RIM EL. = 22.61
S5 MH #223
STA. 20+1044.16 - LINE A
N 20479.90
E 10894.34
RIM EL. = 22.61
S5 MH #224
STA. 20+1052.59 - LINE A
N 20479.90
E 10894.34
RIM EL. = 22.61
S5 MH #225
STA. 20+1061.02 - LINE A
N 20479.90
E 10894.34
RIM EL. = 22.61
S5 MH #226
STA. 20+1069.45 - LINE A
N 20479.90
E 10894.34
RIM EL. = 22.61
S5 MH #227
STA. 20+1077.88 - LINE A
N 20479.90
E 10894.34
RIM EL. = 22.61
S5 MH #228
STA. 20+1086.31 - LINE A
N 20479.90
E 10894.34
RIM EL. = 22.61
S5 MH #229
STA. 20+1094.74 - LINE A
N 20479.90
E 10894.34
RIM EL. = 22.61
S5 MH #230
STA. 20+1103.17 - LINE A
N 20479.90
E 10894.34
RIM EL. = 22.61
S5 MH #231
STA. 20+1111.60 - LINE A
N 20479.90
E 10894.34
RIM EL. = 22.61
S5 MH #232
STA. 20+1120.03 - LINE A
N 20479.90
E 10894.34
RIM EL. = 22.61
S5 MH #233
STA. 20+1128.46 - LINE A
N 20479.90
E 10894.34
RIM EL. = 22.61
S5 MH #234
STA. 20+1136.89 - LINE A
N 20479.90
E 10894.34
RIM EL. = 22.61
S5 MH #235
STA. 20+1145.32 - LINE A
N 20479.90
E 10894.34
RIM EL. = 22.61
S5 MH #236
STA. 20+1153.75 - LINE A
N 20479.90
E 10894.34
RIM EL. = 22.61
S5 MH #237
STA. 20+1162.18 - LINE A
N 20479.90
E 10894.34
RIM EL. = 22.61
S5 MH #238
STA. 20+1170.61 - LINE A
N 20479.90
E 10894.34
RIM EL. = 22.61
S5 MH #239
STA. 20+1179.04 - LINE A
N 20479.90
E 10894.34
RIM EL. = 22.61
S5 MH #240
STA. 20+1187.47 - LINE A
N 20479.90
E 10894.34
RIM EL. = 22.61
S5 MH #241
STA. 20+1195.90 - LINE A
N 20479.90
E 10894.34
RIM EL. = 22.61
S5 MH #242
STA. 20+1204.33 - LINE A
N 20479.90
E 10894.34
RIM EL. = 22.61
S5 MH #243
STA. 20+1212.76 - LINE A
N 20479.90
E 10894.34
RIM EL. = 22.61
S5 MH #244
STA. 20+1221.19 - LINE A
N 20479.90
E 10894.34
RIM EL. = 22.61
S5 MH #245
STA. 20+1229.62 - LINE A
N 20479.90
E 10894.34
RIM EL. = 22.61
S5 MH #246
STA. 20+1238.05 - LINE A
N 20479.90
E 10894.34
RIM EL. = 22.61
S5 MH #247
STA. 20+1246.48 - LINE A
N 20479.90
E 10894.34
RIM EL. = 22.61
S5 MH #248
STA. 20+1254.91 - LINE A
N 20479.90
E 10894.34
RIM EL. = 22.61
S5 MH #249
STA. 20+1263.34 - LINE A
N 20479.90
E 10894.34
RIM EL. = 22.61
S5 MH #250
STA. 20+1271.77 - LINE A
N 20479.90
E 10894.34
RIM EL. = 22.61
S5 MH #251
STA. 20+1280.20 - LINE A
N 20479.90
E 10894.34
RIM EL. = 22.61
S5 MH #252
STA. 20+1288.63 - LINE A
N 20479.90
E 10894.34
RIM EL. = 22.61
S5 MH #253
STA. 20+1297.06 - LINE A
N 20479.90
E 10894.34
RIM EL. = 22.61
S5 MH #254
STA. 20+1305.49 - LINE A
N 20479.90
E 10894.34
RIM EL. = 22.61
S5 MH #255
STA. 20+1313.92 - LINE A
N 20479.90
E 10894.34
RIM EL. = 22.61
S5 MH #256
STA. 20+1322.35 - LINE A
N 20479.90
E 10894.34
RIM EL. = 22.61
S5 MH #257
STA. 20+1330.78 - LINE A
N 20479.90
E 10894.34
RIM EL. = 22.61
S5 MH #258
STA. 20+1339.21 - LINE A
N 20479.90
E 10894.34
RIM EL. = 22.61
S5 MH #259
STA. 20+1347.64 - LINE A
N 20479.90
E 10894.34
RIM EL. = 22.61
S5 MH #260
STA. 20+1356.07 - LINE A
N 20479.90
E 10894.34
RIM EL. = 22.61
S5 MH #261
STA. 20+1364.50 - LINE A
N 20479.90
E 10894.34
RIM EL. = 22.61
S5 MH #262
STA. 20+1372.93 - LINE A
N 20479.90
E 10894.34
RIM EL. = 22.61
S5 MH #263
STA. 20+1381.36 - LINE A
N 20479.90
E 10894.34
RIM EL. = 22.61
S5 MH #264
STA. 20+1389.79 - LINE A
N 20479.90
E 10894.34
RIM EL. = 22.61
S5 MH #265
STA. 20+1398.22 - LINE A
N 20479.90
E 10894.34
RIM EL. = 22.61
S5 MH #266
STA. 20+1406.65 - LINE A
N 20479.90
E 10894.34
RIM EL. = 22.61
S5 MH #267
STA. 20+1415.08 - LINE A
N 20479.90
E 10894.34
RIM EL. = 22.61
S5 MH #268
STA. 20+1423.51 - LINE A
N 20479.90
E 10894.34
RIM EL. = 22.61
S5 MH #269
STA. 20+1431.94 - LINE A
N 20479.90
E 10894.34
RIM EL. = 22.61
S5 MH #270
STA. 20+1440.37 - LINE A
N 20479.90
E 10894.34
RIM EL. = 22.61
S5 MH #271
STA. 20+1448.80 - LINE A
N 20479.90
E 10894.34
RIM EL. = 22.61
S5 MH #272
STA. 20+1457.23 - LINE A
N 20479.90
E 10894.34
RIM EL. = 22.61
S5 MH #273
STA. 20+1465.66 - LINE A
N 20479.90
E 10894.34
RIM EL. = 22.61
S5 MH #274
STA. 20+1474.09 - LINE A
N 20479.90
E 10894.34
RIM EL. = 22.61
S5 MH #275
STA. 20+1482.52 - LINE A
N 20479.90
E 10894.34
RIM EL. = 22.61
S5 MH #276
STA. 20+1490.95 - LINE A
N 20479.90
E 10894.34
RIM EL. = 22.61
S5 MH #277
STA. 20+1499.38 - LINE A
N 20479.90
E 10894.34
RIM EL. = 22.61
S5 MH #278
STA. 20+1507.81 - LINE A
N 20479.90
E 10894.34
RIM EL. = 22.61
S5 MH #279
STA. 20+1516.24 - LINE A
N 20479.90
E 10894.34
RIM EL. = 22.61
S5 MH #280
STA. 20+1524.67 - LINE A
N 20479.90
E 10894.34
RIM EL. = 22.61
S5 MH

BENCH MARKS

TBM #1
I.R. & C., "LB2856"
ELEV. 115.49
N 21954.20
E 11064.83

TBM #2
I.R. & C., "LB2856"
ELEV. 115.49
N 20769.76
E 13561.33

B.M. #3
DISK IN CONC., 195-Y-13
ELEV. 116.16
N 92786.66
E 9029.68

B.M. #4
I.R. & C., "LB2856"
ELEV. 115.20
N 11738.97
E 11738.97

NOTE: ALL ELEVATIONS ON PLANS ARE BASED AND MUST BE CONSTRUCTED ON HAYD 88 DATUM.

1. HAYD 88 DATUM IS 1.48' HIGHER THAN NAVD 88 DATUM.

2. HAYD 88 DATUM IS 1.48' HIGHER THAN NAVD 88 DATUM.

PROJECT NO.	ISSUE FOR PERMIT	DATE
01/17/03	ISSUE FOR PERMIT	01/17/03
02/21/03	ISSUE FOR COMMENTS	02/21/03
03/19/03	ISSUE FOR PERMIT	03/19/03
04/08/03	ISSUE FOR SITE PLAN APPROVAL	04/08/03

NO.	DATE	ISSUE
1	01/17/03	ISSUE FOR PERMIT
2	02/21/03	ISSUE FOR COMMENTS
3	03/19/03	ISSUE FOR PERMIT
4	04/08/03	ISSUE FOR SITE PLAN APPROVAL

WAL-MART
REGIONAL DISTRIBUTION
CENTER NO. 7038
FORT PIERCE, FLORIDA

Area 6 - UTILITY PLAN

Center Burgess
Construction Management, and Related Services
Center & Burgess, Inc.
777 Main Street, Fort Pierce, Florida 34949
(887) 232-8000 Fax (887) 232-8700
Certificate of Authorization Number AA-C00002

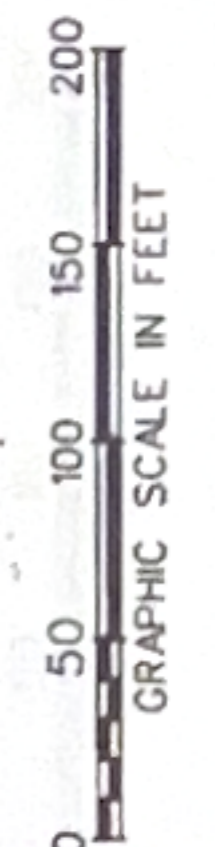
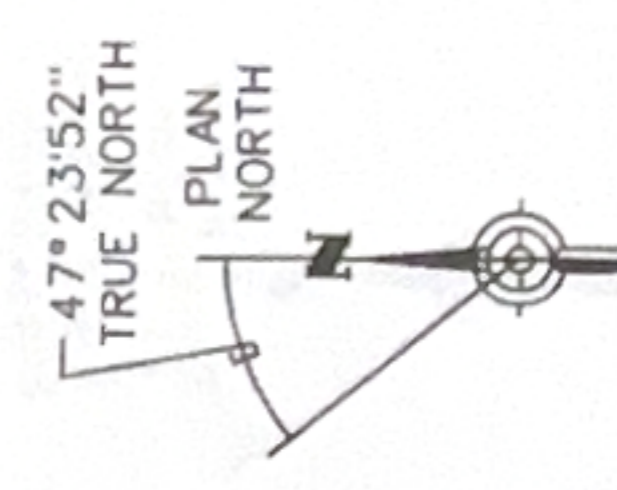
SHEET
C8.16

PROJECT RECORD

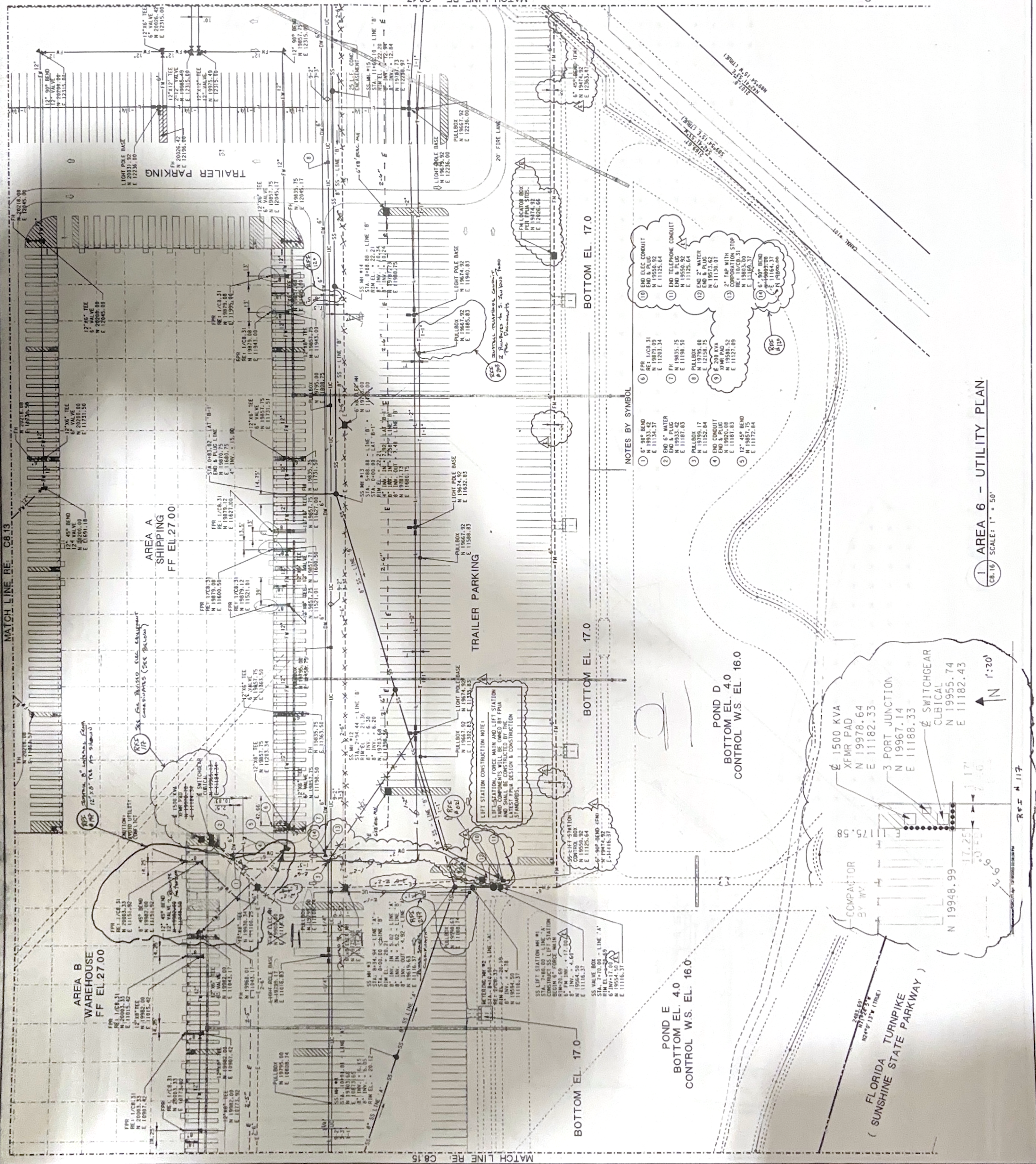
Job #570

Date: 06-16-04
Regional Distribution Center #7038
Fort Pierce, Florida Job #570
Center Burgess Engineering & Construction
Telephone: (887) 395-4000
7901 SW 8th Court
Plantation, Florida 33324
This plan, with the as-built notations, accurately reflects the completed work.

M. William Roedel, Senior Project Manager



KEY PLAN



NOTES BY SYMBOL

- 1 6" 90° BEND
N 19933.42
E 11134.37
- 2 END 6" WATER
END 6" WATER
N 19978.64
E 11182.33
- 3 END 6" WATER
END 6" WATER
N 19978.64
E 11182.33
- 4 END 6" WATER
END 6" WATER
N 19978.64
E 11182.33
- 5 12" 45° BEND
N 19957.75
E 11172.84
- 6 6" 90° BEND
N 19933.42
E 11134.37
- 7 END 6" WATER
END 6" WATER
N 19978.64
E 11182.33
- 8 END 6" WATER
END 6" WATER
N 19978.64
E 11182.33
- 9 END 6" WATER
END 6" WATER
N 19978.64
E 11182.33
- 10 END 6" WATER
END 6" WATER
N 19978.64
E 11182.33
- 11 END 6" WATER
END 6" WATER
N 19978.64
E 11182.33
- 12 END 6" WATER
END 6" WATER
N 19978.64
E 11182.33
- 13 END 6" WATER
END 6" WATER
N 19978.64
E 11182.33
- 14 END 6" WATER
END 6" WATER
N 19978.64
E 11182.33
- 15 END 6" WATER
END 6" WATER
N 19978.64
E 11182.33
- 16 END 6" WATER
END 6" WATER
N 19978.64
E 11182.33
- 17 END 6" WATER
END 6" WATER
N 19978.64
E 11182.33
- 18 END 6" WATER
END 6" WATER
N 19978.64
E 11182.33
- 19 END 6" WATER
END 6" WATER
N 19978.64
E 11182.33
- 20 END 6" WATER
END 6" WATER
N 19978.64
E 11182.33

1 AREA 6 - UTILITY PLAN
C8.16 SCALE: 1" = 50'

REF N 117

REGIONAL DISTRIBUTION CENTER NO. 7038

FORT PIERCE, FLORIDA

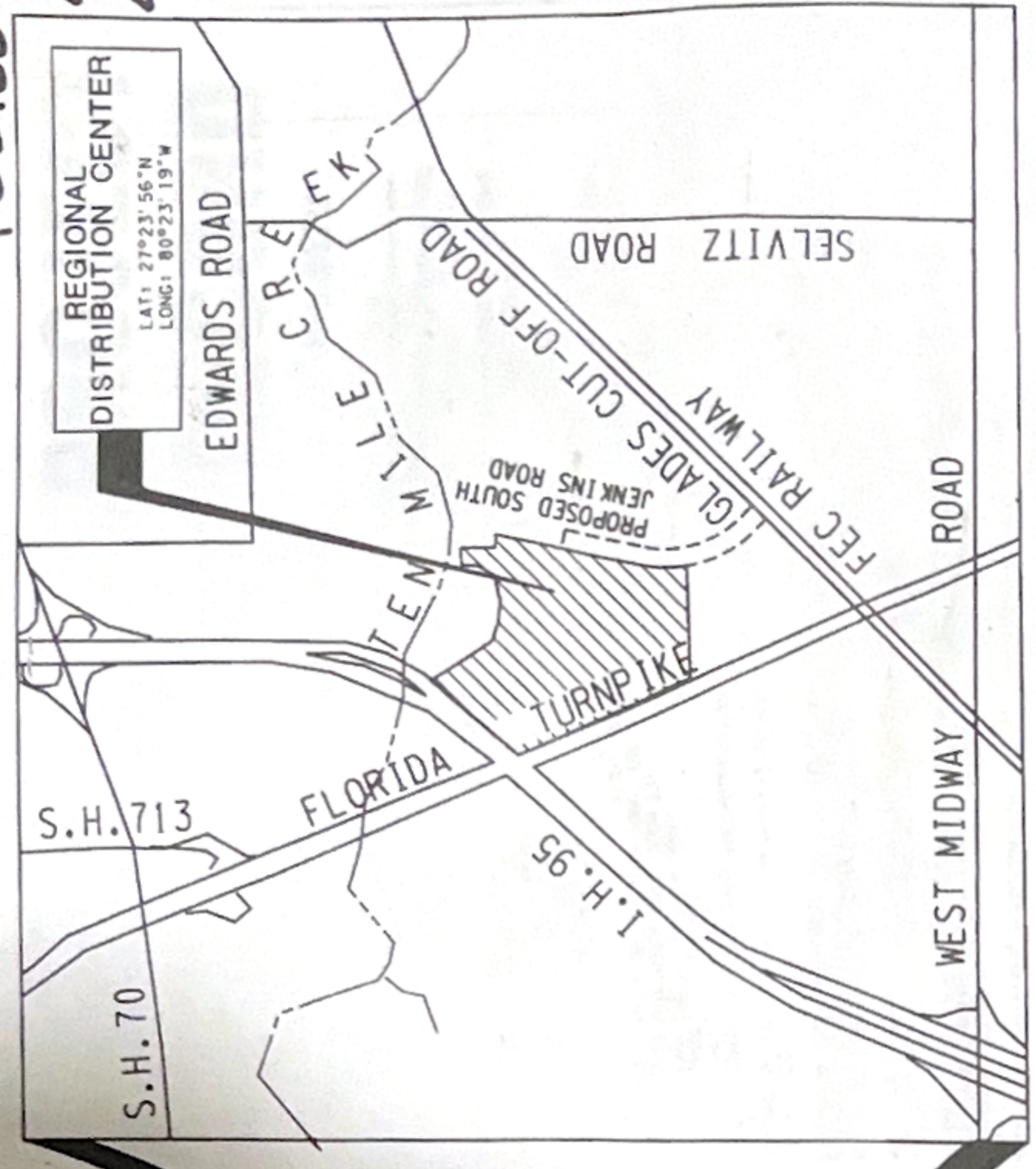
WAL-MART®

STORES EAST, L.P.
 SAM M. WALTON DEVELOPMENT COMPLEX
 2001 SOUTHEAST 10TH STREET, DEPARTMENT 9562
 BENTONVILLE, ARKANSAS 72716-0550

Carter Burgess

Consultants in Planning, Engineering, Architecture,
 Construction Management, and Related Services
Carter & Burgess, Inc.
 Retail & Distribution - Floor 29
 777 Main Street, Fort Worth, Texas 76102
 (817) 222-8500 Fax (817) 222-8550
 Architecture Certificate of Authorization Number AA-C001802
 Engineering Certificate of Authorization Number 5300

Posted Set
 7/13/03
 7/11/03



DRAWING INDEX

DISCIPLINE CODE	BUILDING AREAS	SITE AREAS
1. WAREHOUSE	1. TOPOGRAPHY	1. TOPOGRAPHY
2. GUARDHOUSE	2. TANG/FUEL DISPENSING ISLAND	2. TANG/FUEL DISPENSING ISLAND
3. F.I.P. PUMP HOUSE	3. F.I.P. PUMP HOUSE	3. F.I.P. PUMP HOUSE
4. CONCRETE FLOOR	4. CONCRETE FLOOR	4. CONCRETE FLOOR
5. FIRE PROTECTION	5. FIRE PROTECTION	5. FIRE PROTECTION
6. ELECTRICAL	6. ELECTRICAL	6. ELECTRICAL
7. MECHANICAL	7. MECHANICAL	7. MECHANICAL
8. METAL BUILDING	8. METAL BUILDING	8. METAL BUILDING

- BUILDING
 - AB.01 ARCHITECTURAL ABBREVIATIONS, SYMBOLS & GENERAL NOTES
 - BB.01 MECHANICAL ABBREVIATIONS, SYMBOLS & GENERAL NOTES
 - BB.02 ELECTRICAL ABBREVIATIONS, SYMBOLS & GENERAL NOTES
 - BB.03 MECHANICAL SCHEDULES
 - BB.04 ELECTRICAL SCHEDULES
- MECHANICAL
 - CB.01 MECHANICAL ABBREVIATIONS, SYMBOLS & GENERAL NOTES
 - CB.02 MECHANICAL SCHEDULES
- ELECTRICAL
 - EB.01 ELECTRICAL ABBREVIATIONS, SYMBOLS & GENERAL NOTES
 - EB.02 ELECTRICAL SCHEDULES
 - EB.03 ELECTRICAL SCHEDULES
- FIRE PROTECTION
 - FB.01 FIRE PROTECTION ABBREVIATIONS, SYMBOLS & GENERAL NOTES
 - FB.02 FIRE PROTECTION SCHEDULES
- METAL BUILDING
 - MB.01 ARCHITECTURAL ABBREVIATIONS, SYMBOLS & GENERAL NOTES

NO.	DESCRIPTION	NO.	DESCRIPTION
1.0	TOPOGRAPHY	1.0	WAREHOUSE
1.1	TOPOGRAPHY - OVERALL	1.01	AREA A - BACK & CONVEYOR PLAN
1.2	TOPOGRAPHY - AREA 1	1.02	AREA B - BACK & CONVEYOR PLAN
1.3	TOPOGRAPHY - AREA 2	1.03	AREA C - BACK & CONVEYOR PLAN
1.4	TOPOGRAPHY - AREA 3	1.04	AREA D - BACK & CONVEYOR PLAN
1.5	TOPOGRAPHY - AREA 4	1.05	AREA E - BACK & CONVEYOR PLAN
1.6	TOPOGRAPHY - AREA 5	1.06	AREA F - BACK & CONVEYOR PLAN
1.7	TOPOGRAPHY - AREA 6	1.07	AREA G - BACK & CONVEYOR PLAN
1.8	TOPOGRAPHY - AREA 7	1.08	AREA H - BACK & CONVEYOR PLAN
1.9	TOPOGRAPHY - AREA 8	1.09	AREA I - BACK & CONVEYOR PLAN
1.10	TOPOGRAPHY - AREA 9	1.10	AREA J - BACK & CONVEYOR PLAN
1.11	TOPOGRAPHY - AREA 10	1.11	AREA K - BACK & CONVEYOR PLAN
1.12	TOPOGRAPHY - AREA 11	1.12	AREA L - BACK & CONVEYOR PLAN
1.13	TOPOGRAPHY - AREA 12	1.13	AREA M - BACK & CONVEYOR PLAN
1.14	TOPOGRAPHY - AREA 13	1.14	AREA N - BACK & CONVEYOR PLAN
1.15	TOPOGRAPHY - AREA 14	1.15	AREA O - BACK & CONVEYOR PLAN
1.16	TOPOGRAPHY - AREA 15	1.16	AREA P - BACK & CONVEYOR PLAN
1.17	TOPOGRAPHY - AREA 16	1.17	AREA Q - BACK & CONVEYOR PLAN
1.18	TOPOGRAPHY - AREA 17	1.18	AREA R - BACK & CONVEYOR PLAN
1.19	TOPOGRAPHY - AREA 18	1.19	AREA S - BACK & CONVEYOR PLAN
1.20	TOPOGRAPHY - AREA 19	1.20	AREA T - BACK & CONVEYOR PLAN
1.21	TOPOGRAPHY - AREA 20	1.21	AREA U - BACK & CONVEYOR PLAN
1.22	TOPOGRAPHY - AREA 21	1.22	AREA V - BACK & CONVEYOR PLAN
1.23	TOPOGRAPHY - AREA 22	1.23	AREA W - BACK & CONVEYOR PLAN
1.24	TOPOGRAPHY - AREA 23	1.24	AREA X - BACK & CONVEYOR PLAN
1.25	TOPOGRAPHY - AREA 24	1.25	AREA Y - BACK & CONVEYOR PLAN
1.26	TOPOGRAPHY - AREA 25	1.26	AREA Z - BACK & CONVEYOR PLAN
1.27	TOPOGRAPHY - AREA 26	1.27	AREA AA - BACK & CONVEYOR PLAN
1.28	TOPOGRAPHY - AREA 27	1.28	AREA AB - BACK & CONVEYOR PLAN
1.29	TOPOGRAPHY - AREA 28	1.29	AREA AC - BACK & CONVEYOR PLAN
1.30	TOPOGRAPHY - AREA 29	1.30	AREA AD - BACK & CONVEYOR PLAN
1.31	TOPOGRAPHY - AREA 30	1.31	AREA AE - BACK & CONVEYOR PLAN
1.32	TOPOGRAPHY - AREA 31	1.32	AREA AF - BACK & CONVEYOR PLAN
1.33	TOPOGRAPHY - AREA 32	1.33	AREA AG - BACK & CONVEYOR PLAN
1.34	TOPOGRAPHY - AREA 33	1.34	AREA AH - BACK & CONVEYOR PLAN
1.35	TOPOGRAPHY - AREA 34	1.35	AREA AI - BACK & CONVEYOR PLAN
1.36	TOPOGRAPHY - AREA 35	1.36	AREA AJ - BACK & CONVEYOR PLAN
1.37	TOPOGRAPHY - AREA 36	1.37	AREA AK - BACK & CONVEYOR PLAN
1.38	TOPOGRAPHY - AREA 37	1.38	AREA AL - BACK & CONVEYOR PLAN
1.39	TOPOGRAPHY - AREA 38	1.39	AREA AM - BACK & CONVEYOR PLAN
1.40	TOPOGRAPHY - AREA 39	1.40	AREA AN - BACK & CONVEYOR PLAN
1.41	TOPOGRAPHY - AREA 40	1.41	AREA AO - BACK & CONVEYOR PLAN
1.42	TOPOGRAPHY - AREA 41	1.42	AREA AP - BACK & CONVEYOR PLAN
1.43	TOPOGRAPHY - AREA 42	1.43	AREA AQ - BACK & CONVEYOR PLAN
1.44	TOPOGRAPHY - AREA 43	1.44	AREA AR - BACK & CONVEYOR PLAN
1.45	TOPOGRAPHY - AREA 44	1.45	AREA AS - BACK & CONVEYOR PLAN
1.46	TOPOGRAPHY - AREA 45	1.46	AREA AT - BACK & CONVEYOR PLAN
1.47	TOPOGRAPHY - AREA 46	1.47	AREA AU - BACK & CONVEYOR PLAN
1.48	TOPOGRAPHY - AREA 47	1.48	AREA AV - BACK & CONVEYOR PLAN
1.49	TOPOGRAPHY - AREA 48	1.49	AREA AW - BACK & CONVEYOR PLAN
1.50	TOPOGRAPHY - AREA 49	1.50	AREA AX - BACK & CONVEYOR PLAN
1.51	TOPOGRAPHY - AREA 50	1.51	AREA AY - BACK & CONVEYOR PLAN
1.52	TOPOGRAPHY - AREA 51	1.52	AREA AZ - BACK & CONVEYOR PLAN
1.53	TOPOGRAPHY - AREA 52	1.53	AREA BA - BACK & CONVEYOR PLAN
1.54	TOPOGRAPHY - AREA 53	1.54	AREA BB - BACK & CONVEYOR PLAN
1.55	TOPOGRAPHY - AREA 54	1.55	AREA BC - BACK & CONVEYOR PLAN
1.56	TOPOGRAPHY - AREA 55	1.56	AREA BD - BACK & CONVEYOR PLAN
1.57	TOPOGRAPHY - AREA 56	1.57	AREA BE - BACK & CONVEYOR PLAN
1.58	TOPOGRAPHY - AREA 57	1.58	AREA BF - BACK & CONVEYOR PLAN
1.59	TOPOGRAPHY - AREA 58	1.59	AREA BG - BACK & CONVEYOR PLAN
1.60	TOPOGRAPHY - AREA 59	1.60	AREA BH - BACK & CONVEYOR PLAN
1.61	TOPOGRAPHY - AREA 60	1.61	AREA BI - BACK & CONVEYOR PLAN
1.62	TOPOGRAPHY - AREA 61	1.62	AREA BJ - BACK & CONVEYOR PLAN
1.63	TOPOGRAPHY - AREA 62	1.63	AREA BK - BACK & CONVEYOR PLAN
1.64	TOPOGRAPHY - AREA 63	1.64	AREA BL - BACK & CONVEYOR PLAN
1.65	TOPOGRAPHY - AREA 64	1.65	AREA BM - BACK & CONVEYOR PLAN
1.66	TOPOGRAPHY - AREA 65	1.66	AREA BN - BACK & CONVEYOR PLAN
1.67	TOPOGRAPHY - AREA 66	1.67	AREA BO - BACK & CONVEYOR PLAN
1.68	TOPOGRAPHY - AREA 67	1.68	AREA BP - BACK & CONVEYOR PLAN
1.69	TOPOGRAPHY - AREA 68	1.69	AREA BQ - BACK & CONVEYOR PLAN
1.70	TOPOGRAPHY - AREA 69	1.70	AREA BR - BACK & CONVEYOR PLAN
1.71	TOPOGRAPHY - AREA 70	1.71	AREA BS - BACK & CONVEYOR PLAN
1.72	TOPOGRAPHY - AREA 71	1.72	AREA BT - BACK & CONVEYOR PLAN
1.73	TOPOGRAPHY - AREA 72	1.73	AREA BU - BACK & CONVEYOR PLAN
1.74	TOPOGRAPHY - AREA 73	1.74	AREA BV - BACK & CONVEYOR PLAN
1.75	TOPOGRAPHY - AREA 74	1.75	AREA BV - BACK & CONVEYOR PLAN
1.76	TOPOGRAPHY - AREA 75	1.76	AREA BV - BACK & CONVEYOR PLAN
1.77	TOPOGRAPHY - AREA 76	1.77	AREA BV - BACK & CONVEYOR PLAN
1.78	TOPOGRAPHY - AREA 77	1.78	AREA BV - BACK & CONVEYOR PLAN
1.79	TOPOGRAPHY - AREA 78	1.79	AREA BV - BACK & CONVEYOR PLAN
1.80	TOPOGRAPHY - AREA 79	1.80	AREA BV - BACK & CONVEYOR PLAN
1.81	TOPOGRAPHY - AREA 80	1.81	AREA BV - BACK & CONVEYOR PLAN
1.82	TOPOGRAPHY - AREA 81	1.82	AREA BV - BACK & CONVEYOR PLAN
1.83	TOPOGRAPHY - AREA 82	1.83	AREA BV - BACK & CONVEYOR PLAN
1.84	TOPOGRAPHY - AREA 83	1.84	AREA BV - BACK & CONVEYOR PLAN
1.85	TOPOGRAPHY - AREA 84	1.85	AREA BV - BACK & CONVEYOR PLAN
1.86	TOPOGRAPHY - AREA 85	1.86	AREA BV - BACK & CONVEYOR PLAN
1.87	TOPOGRAPHY - AREA 86	1.87	AREA BV - BACK & CONVEYOR PLAN
1.88	TOPOGRAPHY - AREA 87	1.88	AREA BV - BACK & CONVEYOR PLAN
1.89	TOPOGRAPHY - AREA 88	1.89	AREA BV - BACK & CONVEYOR PLAN
1.90	TOPOGRAPHY - AREA 89	1.90	AREA BV - BACK & CONVEYOR PLAN
1.91	TOPOGRAPHY - AREA 90	1.91	AREA BV - BACK & CONVEYOR PLAN
1.92	TOPOGRAPHY - AREA 91	1.92	AREA BV - BACK & CONVEYOR PLAN
1.93	TOPOGRAPHY - AREA 92	1.93	AREA BV - BACK & CONVEYOR PLAN
1.94	TOPOGRAPHY - AREA 93	1.94	AREA BV - BACK & CONVEYOR PLAN
1.95	TOPOGRAPHY - AREA 94	1.95	AREA BV - BACK & CONVEYOR PLAN
1.96	TOPOGRAPHY - AREA 95	1.96	AREA BV - BACK & CONVEYOR PLAN
1.97	TOPOGRAPHY - AREA 96	1.97	AREA BV - BACK & CONVEYOR PLAN
1.98	TOPOGRAPHY - AREA 97	1.98	AREA BV - BACK & CONVEYOR PLAN
1.99	TOPOGRAPHY - AREA 98	1.99	AREA BV - BACK & CONVEYOR PLAN
1.100	TOPOGRAPHY - AREA 99	1.100	AREA BV - BACK & CONVEYOR PLAN
1.101	TOPOGRAPHY - AREA 100	1.101	AREA BV - BACK & CONVEYOR PLAN
1.102	TOPOGRAPHY - AREA 101	1.102	AREA BV - BACK & CONVEYOR PLAN
1.103	TOPOGRAPHY - AREA 102	1.103	AREA BV - BACK & CONVEYOR PLAN
1.104	TOPOGRAPHY - AREA 103	1.104	AREA BV - BACK & CONVEYOR PLAN
1.105	TOPOGRAPHY - AREA 104	1.105	AREA BV - BACK & CONVEYOR PLAN
1.106	TOPOGRAPHY - AREA 105	1.106	AREA BV - BACK & CONVEYOR PLAN
1.107	TOPOGRAPHY - AREA 106	1.107	AREA BV - BACK & CONVEYOR PLAN
1.108	TOPOGRAPHY - AREA 107	1.108	AREA BV - BACK & CONVEYOR PLAN
1.109	TOPOGRAPHY - AREA 108	1.109	AREA BV - BACK & CONVEYOR PLAN
1.110	TOPOGRAPHY - AREA 109	1.110	AREA BV - BACK & CONVEYOR PLAN
1.111	TOPOGRAPHY - AREA 110	1.111	AREA BV - BACK & CONVEYOR PLAN
1.112	TOPOGRAPHY - AREA 111	1.112	AREA BV - BACK & CONVEYOR PLAN
1.113	TOPOGRAPHY - AREA 112	1.113	AREA BV - BACK & CONVEYOR PLAN
1.114	TOPOGRAPHY - AREA 113	1.114	AREA BV - BACK & CONVEYOR PLAN
1.115	TOPOGRAPHY - AREA 114	1.115	AREA BV - BACK & CONVEYOR PLAN
1.116	TOPOGRAPHY - AREA 115	1.116	AREA BV - BACK & CONVEYOR PLAN
1.117	TOPOGRAPHY - AREA 116	1.117	AREA BV - BACK & CONVEYOR PLAN
1.118	TOPOGRAPHY - AREA 117	1.118	AREA BV - BACK & CONVEYOR PLAN
1.119	TOPOGRAPHY - AREA 118	1.119	AREA BV - BACK & CONVEYOR PLAN
1.120	TOPOGRAPHY - AREA 119	1.120	AREA BV - BACK & CONVEYOR PLAN
1.121	TOPOGRAPHY - AREA 120	1.121	AREA BV - BACK & CONVEYOR PLAN
1.122	TOPOGRAPHY - AREA 121	1.122	AREA BV - BACK & CONVEYOR PLAN
1.123	TOPOGRAPHY - AREA 122	1.123	AREA BV - BACK & CONVEYOR PLAN
1.124	TOPOGRAPHY - AREA 123	1.124	AREA BV - BACK & CONVEYOR PLAN
1.125	TOPOGRAPHY - AREA 124	1.125	AREA BV - BACK & CONVEYOR PLAN
1.126	TOPOGRAPHY - AREA 125	1.126	AREA BV - BACK & CONVEYOR PLAN
1.127	TOPOGRAPHY - AREA 126	1.127	AREA BV - BACK & CONVEYOR PLAN
1.128	TOPOGRAPHY - AREA 127	1.128	AREA BV - BACK & CONVEYOR PLAN
1.129	TOPOGRAPHY - AREA 128	1.129	AREA BV - BACK & CONVEYOR PLAN
1.130	TOPOGRAPHY - AREA 129	1.130	AREA BV - BACK & CONVEYOR PLAN
1.131	TOPOGRAPHY - AREA 130	1.131	AREA BV - BACK & CONVEYOR PLAN
1.132	TOPOGRAPHY - AREA 131	1.132	AREA BV - BACK & CONVEYOR PLAN
1.133	TOPOGRAPHY - AREA 132	1.133	AREA BV - BACK & CONVEYOR PLAN
1.134	TOPOGRAPHY - AREA 133	1.134	AREA BV - BACK & CONVEYOR PLAN
1.135	TOPOGRAPHY - AREA 134	1.135	AREA BV - BACK & CONVEYOR PLAN
1.136	TOPOGRAPHY - AREA 135	1.136	AREA BV - BACK & CONVEYOR PLAN
1.137	TOPOGRAPHY - AREA 136	1.137	AREA BV - BACK & CONVEYOR PLAN
1.138	TOPOGRAPHY - AREA 137	1.138	AREA BV - BACK & CONVEYOR PLAN
1.139	TOPOGRAPHY - AREA 138	1.139	AREA BV - BACK & CONVEYOR PLAN
1.140	TOPOGRAPHY - AREA 139	1.140	AREA BV - BACK & CONVEYOR PLAN
1.141	TOPOGRAPHY - AREA 140	1.141	AREA BV - BACK & CONVEYOR PLAN
1.142	TOPOGRAPHY - AREA 141	1.142	AREA BV - BACK & CONVEYOR PLAN
1.143	TOPOGRAPHY - AREA 142	1.143	AREA BV - BACK & CONVEYOR PLAN
1.144	TOPOGRAPHY - AREA 143	1.144	AREA BV - BACK & CONVEYOR PLAN
1.145	TOPOGRAPHY - AREA 144	1.145	AREA BV - BACK & CONVEYOR PLAN
1.146	TOPOGRAPHY - AREA 145	1.146	AREA BV - BACK & CONVEYOR PLAN
1.147	TOPOGRAPHY - AREA 146	1.147	AREA BV - BACK & CONVEYOR PLAN
1.148	TOPOGRAPHY - AREA 147	1.148	AREA BV - BACK & CONVEYOR PLAN
1.149	TOPOGRAPHY - AREA 148	1.149	AREA BV - BACK & CONVEYOR PLAN
1.150	TOPOGRAPHY - AREA 149	1.150	AREA BV - BACK & CONVEYOR PLAN
1.151	TOPOGRAPHY - AREA 150	1.151	AREA BV - BACK & CONVEYOR PLAN
1.152	TOPOGRAPHY - AREA 151	1.152	AREA BV - BACK & CONVEYOR PLAN
1.153	TOPOGRAPHY - AREA 152	1.153	AREA BV - BACK & CONVEYOR PLAN
1.154	TOPOGRAPHY - AREA 153	1.154	AREA BV - BACK & CONVEYOR PLAN
1.155	TOPOGRAPHY - AREA 154	1.155	AREA BV - BACK & CONVEYOR PLAN
1.156	TOPOGRAPHY - AREA 155	1.156	AREA BV - BACK & CONVEYOR PLAN
1.157	TOPOGRAPHY - AREA 156	1.157	AREA BV - BACK & CONVEYOR PLAN
1.158	TOPOGRAPHY - AREA 157	1.158	AREA BV - BACK & CONVEYOR PLAN
1.159	TOPOGRAPHY - AREA 158	1.159	AREA BV - BACK & CONVEYOR PLAN
1.160	TOPOGRAPHY - AREA 159	1.160	AREA BV - BACK & CONVEYOR PLAN
1.161	TOPOGRAPHY - AREA 160	1.161	AREA BV - BACK & CONVEYOR PLAN
1.162	TOPOGRAPHY - AREA 161	1.162	AREA BV - BACK & CONVEYOR PLAN
1.163	TOPOGRAPHY - AREA 162	1.163	AREA BV - BACK & CONVEYOR PLAN
1.164	TOPOGRAPHY - AREA 163	1.164	AREA BV - BACK & CONVEYOR PLAN
1.165	TOPOGRAPHY - AREA 164	1.165	AREA BV - BACK & CONVEYOR PLAN
1.166	TOPOGRAPHY - AREA 165	1.166	AREA BV - BACK & CONVEYOR PLAN
1.167	TOPOGRAPHY - AREA 166	1.167	AREA BV - BACK & CONVEYOR PLAN
1.168	TOPOGRAPHY - AREA 167	1.168	AREA BV - BACK & CONVEYOR PLAN
1.169	TOPOGRAPHY - AREA 168	1.169	AREA BV - BACK & CONVEYOR PLAN
1.170	TOPOGRAPHY - AREA 169	1.170	AREA BV - BACK & CONVEYOR PLAN
1.171	TOPOGRAPHY - AREA 170	1.171	AREA BV - BACK & CONVEYOR PLAN
1.172	TOPOGRAPHY - AREA 171	1.172	AREA BV - BACK & CONVEYOR PLAN
1.173	TOPOGRAPHY - AREA 172	1.173	AREA BV - BACK & CONVEYOR PLAN
1.174	TOPOGRAPHY - AREA 173	1.174	AREA BV - BACK & CONVEYOR PLAN
1.175	TOPOGRAPHY - AREA 17		