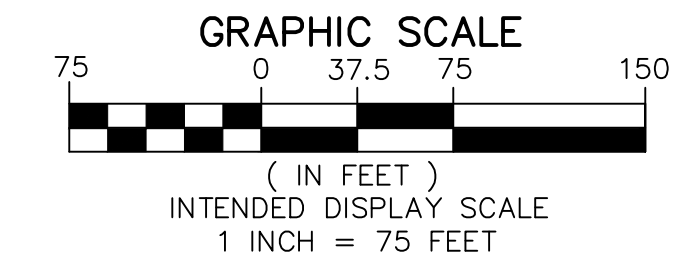
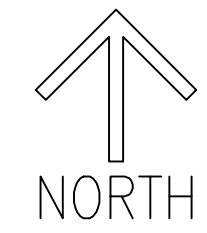


ALTA/NSPS LAND TITLE BOUNDARY SURVEY

LAND LYING IN SECTION 24,
TOWNSHIP 35 SOUTH, RANGE 39 EAST,
ST. LUCIE COUNTY, FLORIDA




SURVEY NOTES:

- LAST DATE OF FIELD DATA ACQUISITION FOR THIS SURVEY IS OCTOBER 31, 2024.
- THIS SURVEY MAP AND REPORT OR THE COPIES THEREOF ARE NOT VALID WITHOUT THE SIGNATURE AND THE ORIGINAL SEAL OF A FLORIDA LICENSED SURVEYOR AND MAPPER.
- LANDS SHOWN HEREON WERE ABSTRACTED BY STEWART TITLE GUARANTY COMPANY, COMMITMENT FOR TITLE INSURANCE HAVING A COMMITMENT NO: 20240331, WITH AN COMMITMENT DATE: AUGUST 27, 2024, AT 08:00 AM, AND ALL PLOTTABLE EXCEPTIONS ARE SHOWN HEREON.
- THE DESCRIPTION OF THE LAND CONTAINED IN THIS SURVEY IS PER EXHIBIT "A" OF THE TITLE COMMITMENT REFERENCED ABOVE.
- ALL MEASUREMENTS ARE IN ACCORDANCE WITH THE UNITED STATES STANDARD FEET.
- ADDITIONS OR DELETIONS TO SURVEY MAPS OR REPORTS BY OTHER THAN THE SIGNING PARTY OR PARTIES IS PROHIBITED WITHOUT WRITTEN CONSENT OF THE SIGNING PARTY OR PARTIES.
- THE VERTICAL DATUM REFERENCES THE NORTH AMERICAN VERTICAL DATUM (NAVD) OF 1988 AND IS IN THE U.S. SURVEY FOOT UNIT OF MEASUREMENT. ELEVATIONS FOR THIS SURVEY DERIVED BY CONVENTIONAL DIFFERENTIAL LEVELING LOOP USING NATIONAL GEODETIC SURVEY (NGS) BENCHMARK DESIGNATION - 195 F 14 WITH A PUBLISHED ELEVATION OF 46.99' FEET NORTH AMERICAN VERTICAL DATUM OF 1988 (NAVD 88) AND SET CONTROL BASED ON NATIONAL GEODETIC SURVEY (NGS) BENCHMARK REFERENCED ABOVE WITH CIRCUIT LENGTH MEASURED IN THE APPLICABLE UNITS FOR THIRD-ORDER ACCURACY.
- CONVERSION FACTOR FROM NAVD 88 TO NGVD 29 IS NAVD 88 + 1.49 TO NGVD 29. CONVERSION FACTOR DETERMINED BY USING SUPERSEDES VALUE OF NGS BENCHMARK 195 F 14 HAVING A SUPERSEDED ELEVATION OF NGVD 29 OF 48.48 (FEET) TO THE CURRENT NGVD 88 ELEVATION OF 46.99 (FEET).
- BEARINGS SHOWN HEREON ARE BASED ON A MEASURED BEARING OF SOUTH 20° 56' 01" EAST ALONG THE WEST RIGHT OF WAY LINE OF INTERSTATE 95 AND ALL OTHER BEARINGS ARE RELATIVE THERETO.
- SUBJECT PROPERTY FALLS WITHIN ZONE "X", ACCORDING TO THE NATIONAL FLOOD INSURANCE PROGRAM (NFIP) FLOOD INSURANCE RATE MAP (FIRM); FIRM PANEL ID. 12111C0167J CITY OF FORT PIERCE, COMMUNITY NO. 120286; PANEL NO. 0167 SUFFIX J; DATED FEBRUARY 15, 2012.
- THERE ARE NOT GAPS, GORES OR HIATUSES, THE TRACTS ARE CONTIGUOUS ALONG THEIR BOUNDARIES.
- UNDERGROUND IMPROVEMENTS, IF ANY, WERE NOT LOCATED EXCEPT AS SHOWN.
- TITLE COMMITMENT DESCRIBES LAND "Northerly of I-95 right-of-way", HOWEVER SAID PROPERTY IS SITUATED WESTERLY OF I-95 RIGHT OF WAY.
- BEARINGS AND DISTANCES SHOWN HEREON ARE FIELD MEASUREMENTS UNLESS OTHERWISE NOTED.
- TREES DEPICTED ON THIS SURVEY ARE NATIVE SPECIES 4" DIAMETER AT BREAST HEIGHT AND TAGGED WITH CORRESPONDING TAG NUMBER AS SHOWN IN THE TREE TABLE. TREE WERE LOCATED BY SURVEY FIELD CREW NOT TRAINED IN SPECIES DESIGNATION, DESIGNATION SHOULD BE VERIFIED BY A TRAINED BOTANIST.

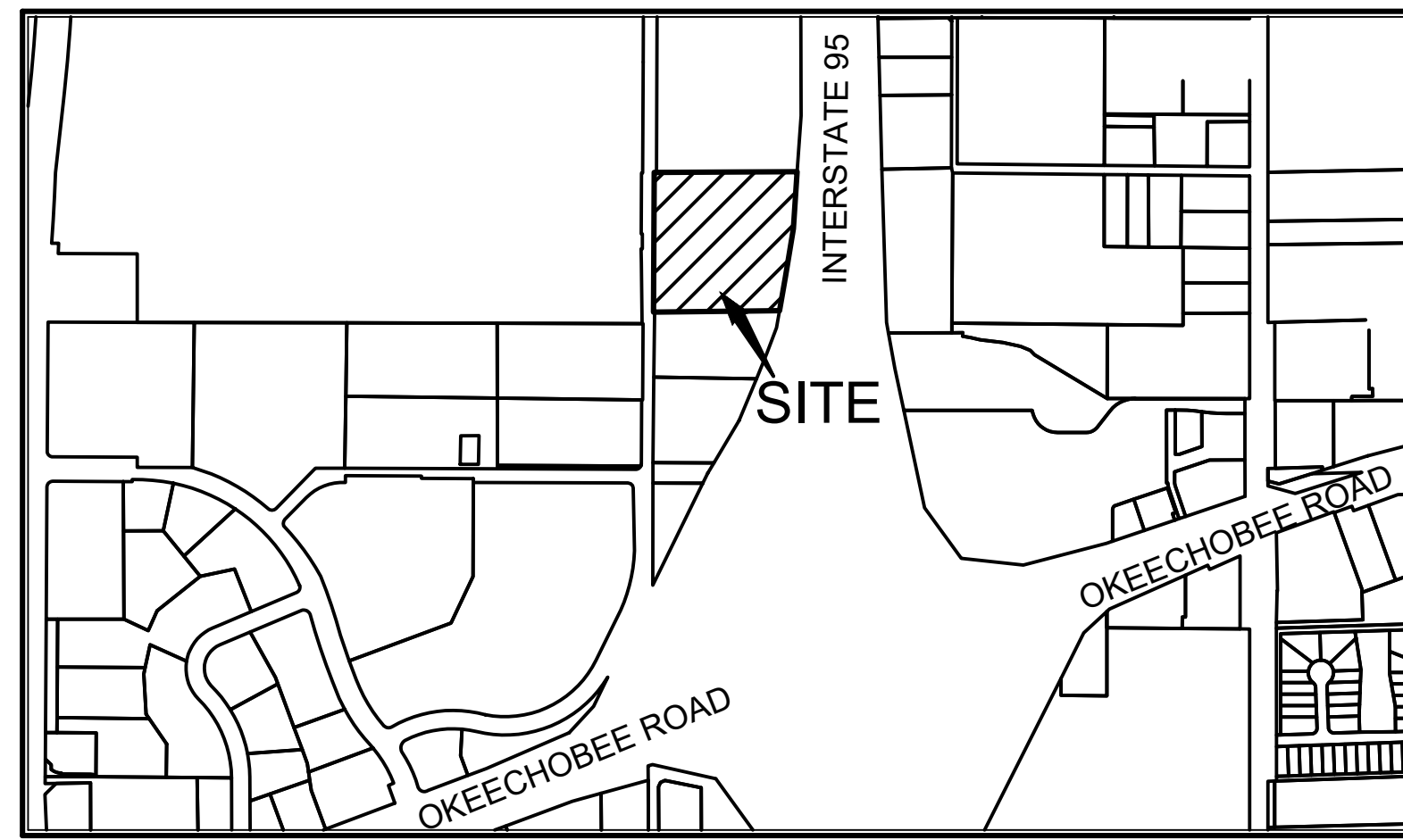
SURVEYOR'S CERTIFICATE:

I HEREBY CERTIFY THAT THE ATTACHED BOUNDARY SURVEY OF THE HEREON DESCRIBED PROPERTY IS TRUE AND CORRECT TO THE BEST OF MY KNOWLEDGE AND BELIEF AS SURVEYED UNDER MY DIRECTION ON OCTOBER 31, 2024. I FURTHER CERTIFY THAT THIS BOUNDARY SURVEY MEETS THE STANDARDS OF PRACTICE SET FORTH IN CHAPTER 5J-17.050, 5J-17.051, 5J-17.052, FLORIDA ADMINISTRATIVE CODE, ADOPTED BY THE FLORIDA BOARD OF PROFESSIONAL SURVEYORS AND MAPPERS, PURSUANT TO FLORIDA STATUTES 472.027, AS AMENDED AND CHAPTERS 177.041 AND 177.061, FLORIDA STATUTES. THE FIELDWORK WAS COMPLETED ON OCTOBER 31, 2024.



RONNIE L. FURNISS
PROFESSIONAL SURVEYOR MAPPER #6272 STATE OF FLORIDA

CAULFIELD & WHEELER, INC.
SURVEYORS - ENGINEERS - PLANNERS
7900 GLADES ROAD, SUITE 100
BOCA RATON, FLORIDA 33434
CERTIFICATION OF AUTHORIZATION NO. LB 3591



LOCATION MAP
NOT TO SCALE

THE FOLLOWING IS A PARTIAL LIST OF NUMBERED EXCEPTIONS WHICH CORRESPOND TO THE NUMBERED EXCEPTIONS CONTAINED IN SCHEDULE B, PART II-EXCEPTIONS OF STEWART TITLE GUARANTY COMPANY COMMITMENT FOR TITLE INSURANCE HAVING A COMMITMENT NUMBER: 20240331, WITH A COMMITMENT DATE OF AUGUST 27, 2024 AT 8:00 A.M.

SCHEDULE B, PART II-EXCEPTIONS

- Easement granted to Fort Pierce Utilities Authority of the City of Fort Pierce, Florida, as more fully set forth in the document recorded in Official Records Book 258, Page 1413, of the Public Records of St. Lucie County, Florida.
(AFFECTS PLOTTED)
- Covenants, conditions, easements and restrictions recorded in Official Records Book 715, Page 1357, of the Public Records of St. Lucie County, Florida, together with all amendments thereto, which may provide for association dues, fees and/or assessments, prior approval of sale, in addition to any easements, reservations, covenants, building set back requirements, option to purchase, right of first refusal, and any special assessments which may come due but deleting any covenant, condition or restriction indicating a preference, limitation or discrimination based on race, color, religion, sex, handicap, familial status or national origin to the extent such covenants, conditions or restrictions violate 42 USC 3604(c).
(AFFECTS NOTHING TO PLOT)

DESCRIPTION:

That part of the Southwest 1/4 of the Northeast 1/4 lying Northerly (Westerly observed in field) of I-95 right-of-way in Section 24, Township 35 South, Range 39 East, St. Lucie County, Florida, less rights-of-way for canal and public roads, and easements of record.

Less and excepting the following:

Being that part of the North 380.00 feet of the South 424.50 feet of the Southwest 1/4 of the Northeast 1/4 of Section 24, Township 35 South, Range 39 East, St. Lucie County, Florida, lying Westerly of the West Limited Access right-of-way line of Interstate 95, Less the West 25 feet, for road right-of-way, and being more particularly described as follows:

Commence at the Southwest corner of Northeast 1/4 of Section 24, Township 35 South, Range 39 East, St. Lucie County, Florida, thence run N00°05'13"W, a distance of 44.50 feet, thence run S89°41'47"E, a distance of 25.00 feet, to the Point of Intersection of the North Right-of-Way Line of the North St. Lucie River Water Control District Canal No. 38 with the East Right-of-Way Line of Peters Road, said point being the Point of Beginning, thence run N00°05'13"W, along the said East Right-of-Way Line of Peters Road, a distance of 380.01 feet, thence run S89°41'37"E, a distance of 444.80 feet, to the West right-of-way line of Interstate 95 (I-95); thence run S20°56'11"W, along the said West right-of-way of I-95, a distance of 202.82 feet, thence run S26°36'34"W, along the said West right-of-way of I-95, a distance of 212.15 feet, to the said North right-of-way line of the North St. Lucie River Water Control District Canal No. 38; thence run N89°41'37"W, along the said North Canal right-of-way, a distance of 276.80 feet, to the Point of Beginning, all lying and being in Section 24, Township 35 South, Range 39 East, St. Lucie County, Florida.

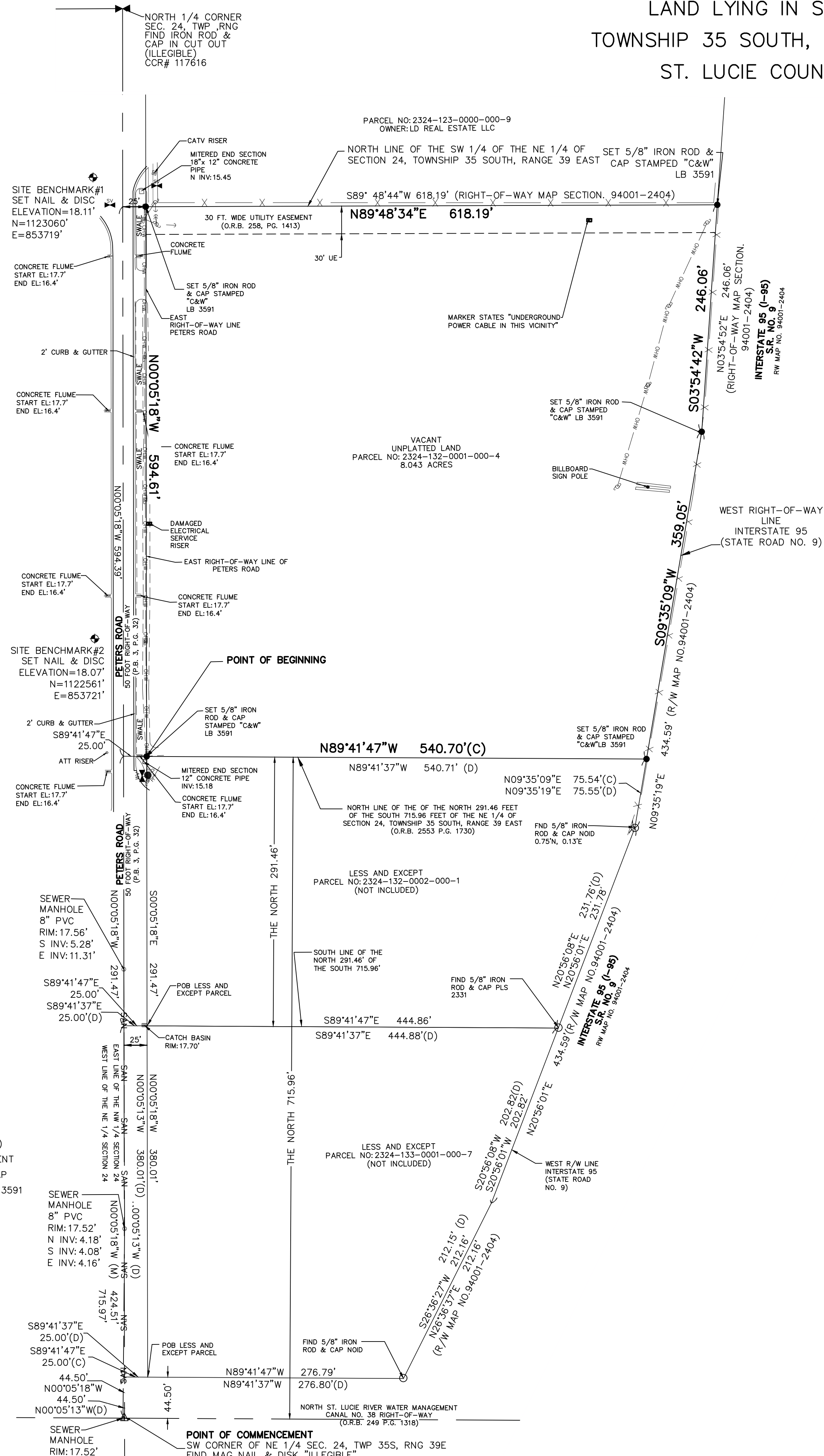
And Less and Excepting the following:

Being that part of the North 291.46 feet of the South 715.96 feet of the Northeast 1/4 of Section 24, Township 35 South, Range 39 East, St. Lucie County, Florida, lying Westerly of the West Limited Access right-of-way line of Interstate 95, less the West 25.00 feet thereof for road right-of-way and being more particularly bounded and described as follows:

Commence at the Southwest corner of said Northeast 1/4 of Section 24; thence North 00°05'13" West, along the West line of said Northeast 1/4 of Section 24 (bearing basis), a distance of 424.51 feet, thence South 89°41'37" East, along the south line of said North 291.46 feet of the South 715.96 feet of the Northeast 1/4 of Section 24, a distance of 25.00 feet to the Point of Beginning, thence continue South 89°41'37" East, along the said South line of the North 291.46 feet of the South 715.96 feet of the Northeast 1/4 of Section 24, a distance of 444.80 feet to the Westerly right-of-way line of Interstate 95 (State Road No. 9); thence North 20°56'09" East, along said Westerly right-of-way line of Interstate 95, a distance of 231.76 feet, thence North 09°35'19" East, along said Westerly right-of-way line of Interstate 95, a distance of 75.55 feet, thence North 89°41'37" West, along the North line of the said South 715.96 feet of the Northeast 1/4 of Section 24, a distance of 540.71 feet to the East Right-of-Way line of Peters Road, thence South 00°05'13" East, along said East right-of-way line parallel with and 25.00 feet East of, as measured at right angles, said West line of the Northeast 1/4 of Section 24, a distance of 291.47 feet to the Point of Beginning.

DESCRIPTION BY SURVEYOR:

COMMENCE AT THE SOUTHWEST CORNER OF SAID NORTHEAST 1/4 OF SECTION 24; THENCE NORTH 00°05'18" WEST, ALONG THE WEST LINE OF SAID NORTHEAST 1/4 OF SECTION 24 (BEARING BASIS), A DISTANCE OF 715.97 FEET; THENCE DEPARTING SAID WEST LINE SOUTH 89°41'47" EAST, A DISTANCE OF 25.00 FEET TO THE POINT OF BEGINNING, THENCE NORTH 00°05'18"W, ALONG THE EAST RIGHT-OF-WAY LINE OF PETERS ROAD, A DISTANCE OF 594.61 FEET; THENCE DEPARTING SAID EAST RIGHT-OF-WAY NORTH 89°48'34" EAST, ALONG THE NORTH LINE OF THE SOUTHWEST 1/4 OF THE NORTHEAST 1/4 OF SECTION 24, TOWNSHIP 35 SOUTH, RANGE 39 EAST, A DISTANCE OF 618.19 FEET; THENCE SOUTH 03°54'42" WEST, ALONG THE WESTERLY RIGHT-OF-WAY OF INTERSTATE 95(I-95), A DISTANCE OF 246.06 FEET; THENCE CONTINUE ALONG THE WESTERLY RIGHT-OF-WAY OF INTERSTATE 95(I-95), SOUTH 09°35'09" WEST, A DISTANCE OF 359.05 FEET; THENCE DEPARTING SAID WESTERLY RIGHT-OF-WAY LINE NORTH 89°41'47" WEST ALONG SAID NORTH LINE OF THE SOUTH 715.96 FEET, A DISTANCE OF 540.70 FEET TO THE POINT OF BEGINNING.



LEGEND

- C - CALCULATED
- BM - BENCHMARK
- (D) - DEED
- M - MEASURED
- CONC - CONCRETE
- ELEV - ELEVATION
- L - ARC LENGTH
- LB - LICENSE BUSINESS
- MON - MONUMENT
- O.R.B. - OFFICIAL RECORD BOOK
- (P) - PLAT
- PB - PLAT BOOK
- PG. - PAGE
- POB - POINT OF BEGINNING
- POC - POINT OF COMMENCEMENT
- R - RADIUS
- (R) - RADIAL
- Δ - DELTA (CENTRAL ANGLE)
- ⊙ - ANCHOR
- ⊕ - CONCRETE POWER POLE
- OHW — - EXISTING ELEVATION
- - OVERHEAD WIRES
- ⊙ - SURVEY MARKER/CONTROL POINT
- ⊙ - WOOD POWER POLE (UNLESS NOTED)
- - DENOTES FOUND CONCRETE MONUMENT
- - DENOTES FOUND SURVEY ROD & CAP
- - DENOTES SET IRON ROD & CAP LB 3591
- ⊙ - DENOTES FIRE VALVE
- ⊙ - FIRE HYDRANT
- ⊙ - ELECTRICAL HANDHOLE
- ⊙ - WATER VALVE
- ⊙ - CATCH BASIN
- x — x — - 6 FOOT CHAIN LINK FENCE
- △ - DENOTES NAIL & SURVEY DISK

REVISIONS	DATE	BY

CAULFIELD & WHEELER, INC.
CIVIL ENGINEERING
LANDSCAPE ARCHITECTURE - SURVEYING
7900 GLADES ROAD - SUITE 100
BOCA RATON, FLORIDA 33434
PHONE (561) 392-0991 / FAX (561) 350-4652



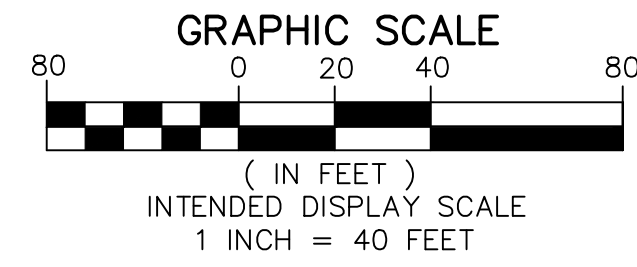
ALTA BOUNDARY & TOPOGRAPHIC SURVEY
LAND LYING IN SECTION 24, TOWNSHIP 35 SOUTH,
RANGE 39 EAST, ST. LUCIE COUNTY FLORIDA

DATE 10/03/2024
DRAWN BY RLF
F.B./ PG. ELECT
SCALE AS SHOWN

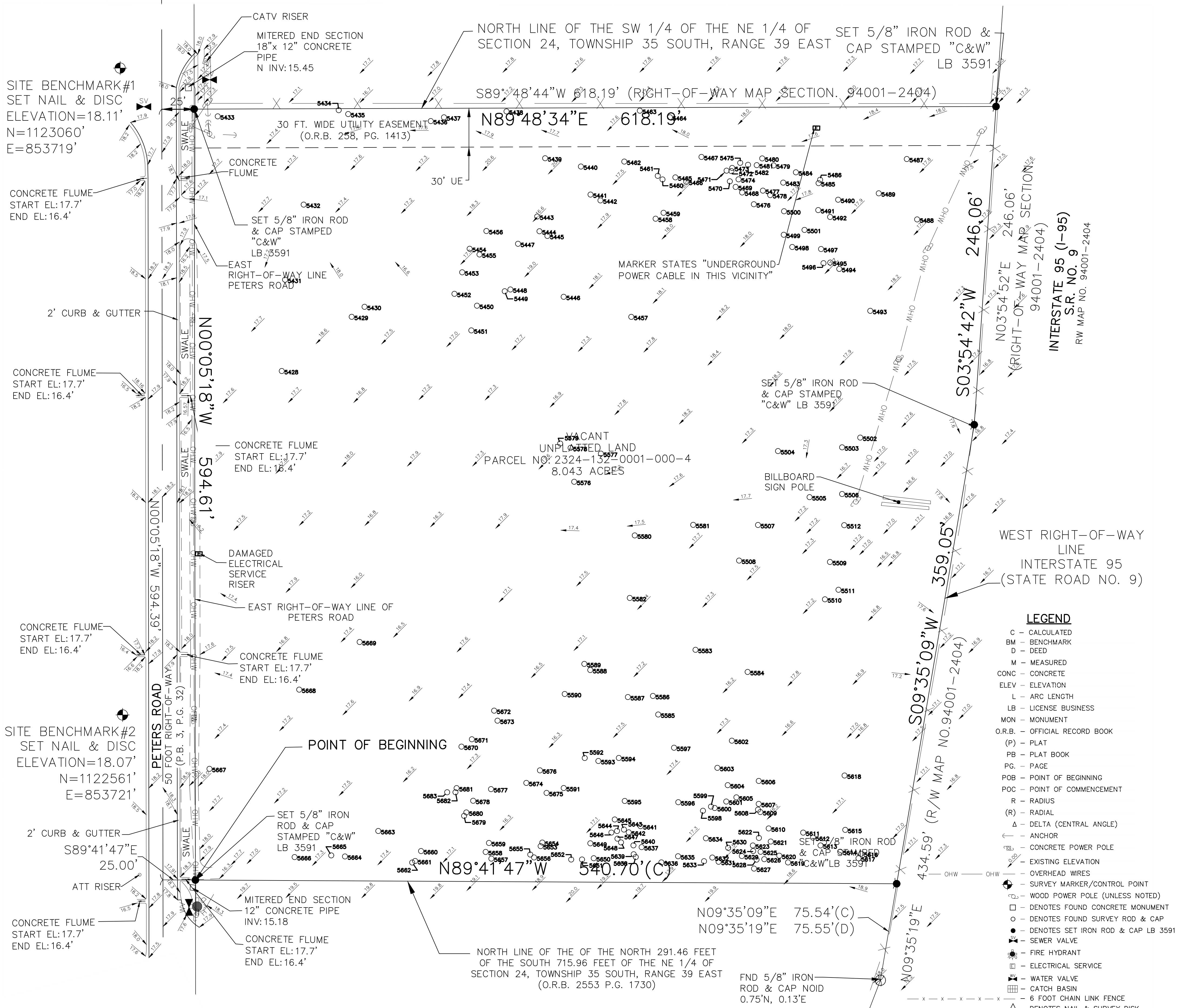
JOB # 11084
SHT. NO.
1
OF 2 SHEETS

TOPOGRAPHIC SURVEY

LAND LYING IN SECTION 24,
TOWNSHIP 35 SOUTH, RANGE 39 EAST,
ST. LUCIE COUNTY, FLORIDA



NORTH 1/4 CORNER
SEC. 24, TWP. 35S, R. 39E
FIND IRON ROD &
CAP IN CUT OUT
(ILLEGIBLE)
CCR# 117616



SITE BENCHMARK #1
SET NAIL & DISC
ELEVATION=18.11'
N=1123060'
E=853719'

SITE BENCHMARK #2
SET NAIL & DISC
ELEVATION=18.07'
N=1122561'
E=853721'

POINT OF BEGINNING

- LEGEND**
- C - CALCULATED
 - BM - BENCHMARK
 - D - DEED
 - M - MEASURED
 - CONC - CONCRETE
 - ELEV - ELEVATION
 - L - ARC LENGTH
 - LB - LICENSE BUSINESS
 - MON - MONUMENT
 - O.R.B. - OFFICIAL RECORD BOOK
 - (P) - PLAT
 - PB - PLAT BOOK
 - PG. - PAGE
 - POB - POINT OF BEGINNING
 - POC - POINT OF COMMENCEMENT
 - R - RADIUS
 - (R) - RADIAL
 - Δ - DELTA (CENTRAL ANGLE)
 - ⊥ - ANCHOR
 - ⊠ - CONCRETE POWER POLE
 - — — — — EXISTING ELEVATION
 - — — — — OVERHEAD WIRES
 - ⊙ - SURVEY MARKER/CONTROL POINT
 - ⊙ - WOOD POWER POLE (UNLESS NOTED)
 - - DENOTES FOUND CONCRETE MONUMENT
 - - DENOTES FOUND SURVEY ROD & CAP
 - - DENOTES SET IRON ROD & CAP LB 3591
 - ⊕ - SEWER VALVE
 - ⊕ - FIRE HYDRANT
 - ⊕ - ELECTRICAL SERVICE
 - ⊕ - WATER VALVE
 - ⊕ - CATCH BASIN
 - ⊕ - 6 FOOT CHAIN LINK FENCE
 - △ - DENOTES NAIL & SURVEY DISK

POINT ID	TREE DIAMETER	TREE TYPE
5441	12	LAUREL OAK
5433	14	LAUREL OAK
5428	16	LAUREL OAK
5429	10	LAUREL OAK
5434	17	LAUREL OAK
5430	12	LAUREL OAK
5432	18	LAUREL OAK
5434	17	PALM
5435	32	LAUREL OAK
5436	12	LAUREL OAK
5437	7	LAUREL OAK
5438	17	LAUREL OAK
5439	21	LAUREL OAK
5440	14	LAUREL OAK
5442	16	LAUREL OAK
5443	7	LAUREL OAK
5444	16	LAUREL OAK
5445	20	LAUREL OAK
5446	18	LAUREL OAK
5447	19	LAUREL OAK
5448	14	LAUREL OAK
5449	14	DO
5450	12	LAUREL OAK
5451	14	LAUREL OAK
5452	7	LAUREL OAK
5453	14	LAUREL OAK
5454	6	LAUREL OAK
5455	6	LAUREL OAK
5456	17	LAUREL OAK
5457	30	LAUREL OAK
5458	22	LAUREL OAK
5459	10	LAUREL OAK
5460	10	LAUREL OAK
5461	37	LAUREL DOUBLE OAK
5462	9	LAUREL OAK
5463	12	PALM
5464	9	LAUREL OAK
5465	6	LAUREL OAK
5466	6	LAUREL OAK
5467	20	LAUREL OAK
5468	8	LAUREL OAK
5469	12	LAUREL OAK
5470	16	LAUREL OAK
5471	12	LAUREL OAK
5472	6	LAUREL OAK
5473	6	LAUREL OAK
5474	6	LAUREL OAK
5475	6	LAUREL OAK
5476	8	LAUREL OAK
5477	10	LAUREL OAK
5478	10	LAUREL OAK
5479	7	LAUREL OAK
5480	16	LAUREL OAK DOUBLE
5481	11	LAUREL OAK
5482	16	LAUREL OAK DOUBLE
5483	9	LAUREL OAK
5484	14	LAUREL OAK
5485	10	LAUREL OAK
5486	18	LAUREL OAK TRIPLE
5487	20	LAUREL OAK TRIPLE
5488	12	LAUREL OAK
5489	6	LAUREL OAK
5490	9	OAK
5491	17	OAK DOUBLE
5492	32	LAUREL OAK DOUBLE

POINT ID	TREE DIAMETER	TREE TYPE
5493	24	LAUREL OAK
5494	24	LAUREL OAK DOUBLE
5495	14	LAUREL OAK
5496	8	LAUREL OAK
5497	12	LAUREL OAK
5498	12	LAUREL OAK
5499	12	LAUREL OAK
5500	10	LAUREL OAK
5501	6	LAUREL OAK
5502	24	LAUREL OAK
5503	16	LAUREL OAK
5504	12	LAUREL OAK
5505	18	LAUREL OAK
5506	10	LAUREL OAK
5507	38	LAUREL OAK DOUBLE
5508	38	LAUREL OAK DOUBLE
5509	8	LAUREL OAK
5510	14	LAUREL OAK
5511	6	LAUREL OAK
5512	24	LAUREL OAK
5516	21	LAUREL OAK
5517	12	LAUREL OAK
5518	27	LAUREL OAK DOUBLE
5519	41	LAUREL OAK DOUBLE
5520	20	LAUREL OAK DOUBLE
5521	7	LAUREL OAK
5522	10	LAUREL OAK
5523	32	LAUREL OAK DOUBLE
5524	41	OAK DOUBLE
5525	32	LAUREL OAK DOUBLE
5526	17	LAUREL OAK
5527	27	LAUREL OAK DOUBLE
5528	22	LAUREL OAK DOUBLE
5529	17	LAUREL OAK DOUBLE
5530	7	LAUREL OAK
5531	19	LAUREL OAK
5532	6	LAUREL OAK
5533	12	LAUREL OAK
5534	10	LAUREL OAK
5535	16	LAUREL OAK
5536	27	LAUREL OAK DOUBLE
5537	12	LAUREL OAK
5538	16	LAUREL OAK
5539	12	LAUREL OAK
5540	7	LAUREL OAK
5541	22	LAUREL OAK DOUBLE
5542	22	LAUREL OAK
5543	14	LAUREL OAK
5544	19	LAUREL OAK DOUBLE
5545	11	LAUREL OAK
5546	19	LAUREL OAK
5547	10	LAUREL OAK
5548	14	LAUREL OAK
5549	10	LAUREL OAK
5550	19	LAUREL OAK
5551	12	LAUREL OAK
5552	14	LAUREL OAK
5553	10	LAUREL OAK
5554	10	LAUREL OAK
5555	12	LAUREL OAK
5556	11	LAUREL OAK
5557	14	LAUREL OAK
5558	10	LAUREL OAK
5559	19	LAUREL OAK
5560	9	LAUREL OAK
5561	30	LAUREL OAK
5562	41	LAUREL OAK DOUBLE
5563	6	LAUREL OAK
5564	14	LAUREL OAK
5565	8	LAUREL OAK
5566	8	LAUREL OAK
5567	14	LAUREL OAK
5568	10	OAK
5569	7	OAK
5570	14	OAK

POINT ID	TREE DIAMETER	TREE TYPE
5621	6	LAUREL OAK
5622	8	LAUREL OAK
5623	8	LAUREL OAK
5624	8	LAUREL OAK
5625	8	LAUREL OAK
5626	8	LAUREL OAK
5627	8	LAUREL OAK
5628	19	OAK DOUBLE
5629	8	LAUREL OAK
5630	8	LAUREL OAK
5631	8	LAUREL OAK
5632	8	LAUREL OAK
5633	8	LAUREL OAK
5634	10	OAK
5635	10	OAK
5636	6	LAUREL OAK
5637	6	LAUREL OAK
5638	9	LAUREL OAK
5639	9	LAUREL OAK
5640	6	LAUREL OAK
5641	41	LAUREL OAK DOUBLE
5642	7	LAUREL OAK
5643	18	LAUREL OAK DOUBLE
5644	26	OAK DOUBLE
5645	12	LAUREL OAK
5646	12	LAUREL OAK
5647	10	LAUREL OAK
5648	7	LAUREL OAK
5649	7	LAUREL OAK
5650	10	LAUREL OAK
5651	10	LAUREL OAK
5652	10	LAUREL OAK
5653	10	LAUREL OAK
5654	7	LAUREL OAK
5655	12	LAUREL OAK
5656	14	LAUREL OAK
5657	10	LAUREL OAK
5658	8	LAUREL OAK
5659	12	LAUREL OAK
5660	32	LAUREL OAK DOUBLE
5661	6	LAUREL OAK
5662	9	LAUREL OAK
5663	11	LAUREL OAK
5664	11	LAUREL OAK
5665	11	LAUREL OAK
5666	11	LAUREL OAK
5667	32	LAUREL OAK
5668	32	LAUREL OAK DOUBLE
5669	11	LAUREL OAK
5670	12	LAUREL OAK
5671	14	LAUREL OAK
5672	10	LAUREL OAK
5673	32	OAK DOUBLE
5674	12	LAUREL OAK
5675	6	LAUREL OAK
5676	22	LAUREL OAK
5677	11	LAUREL OAK
5678	11	LAUREL OAK
5679	22	LAUREL OAK DOUBLE
5680	19	LAUREL OAK DOUBLE
5681	7	LAUREL OAK
5682	11	LAUREL OAK
5683	22	LAUREL OAK

REVISIONS	DATE	BY

CAULFIELD & WHEELER, INC.
CIVIL ENGINEERING
LANDSCAPE ARCHITECTURE - SURVEYING
7900 GLADES ROAD - SUITE 100
BOCA RATON, FLORIDA 33433
PHONE: (561) 992-1991 / FAX: (561) 992-4532

ALTA BOUNDARY & TOPOGRAPHIC SURVEY
LAND LYING IN SECTION 24, TOWNSHIP 35 SOUTH,
RANGE 39 EAST, ST. LUCIE COUNTY FLORIDA

DATE 10/03/2024
DRAWN BY RLF
F.B./ PG. ELECT
SCALE AS SHOWN

JOB # 11084
SHT. NO.
2
OF 2 SHEETS