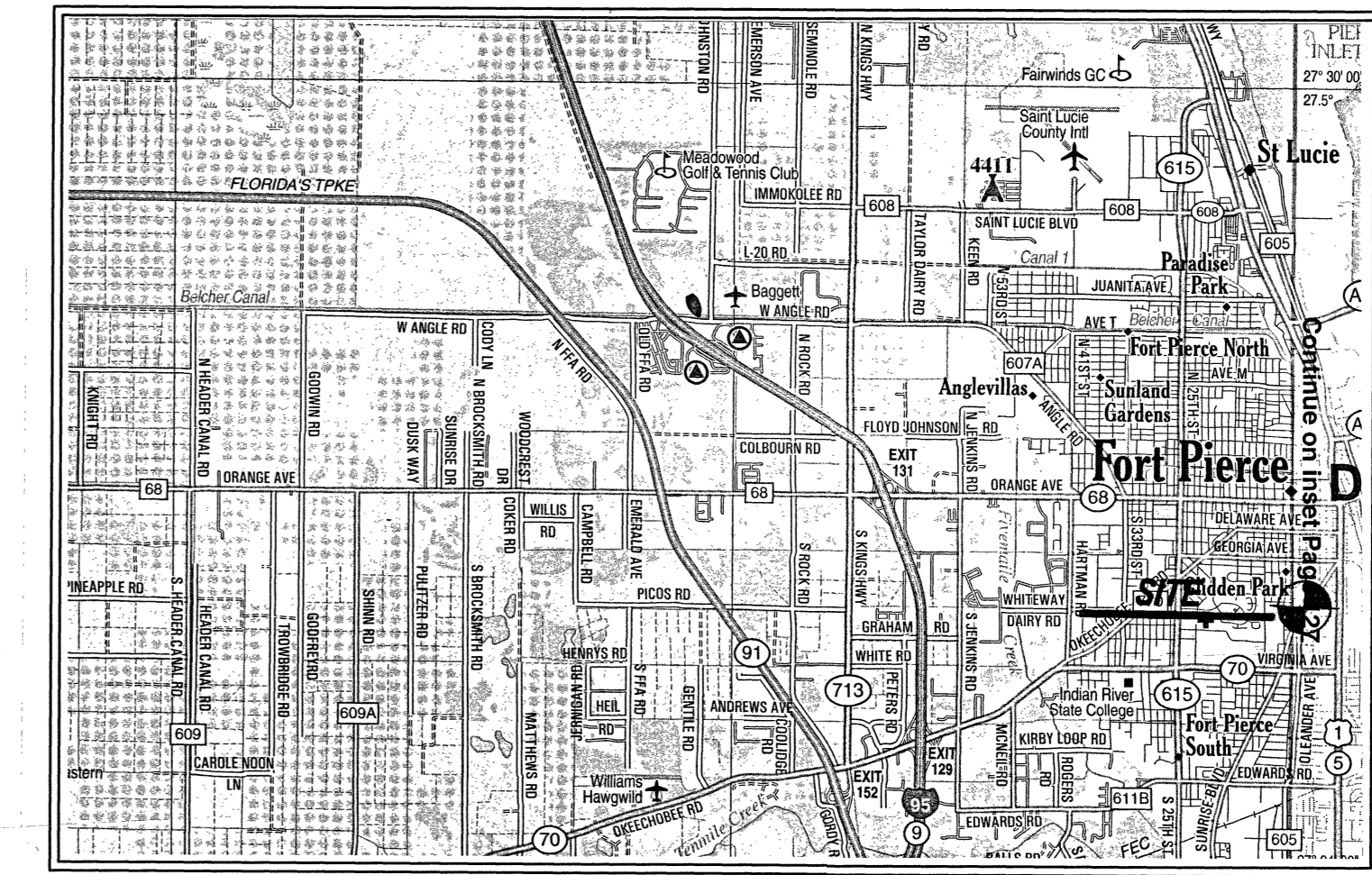
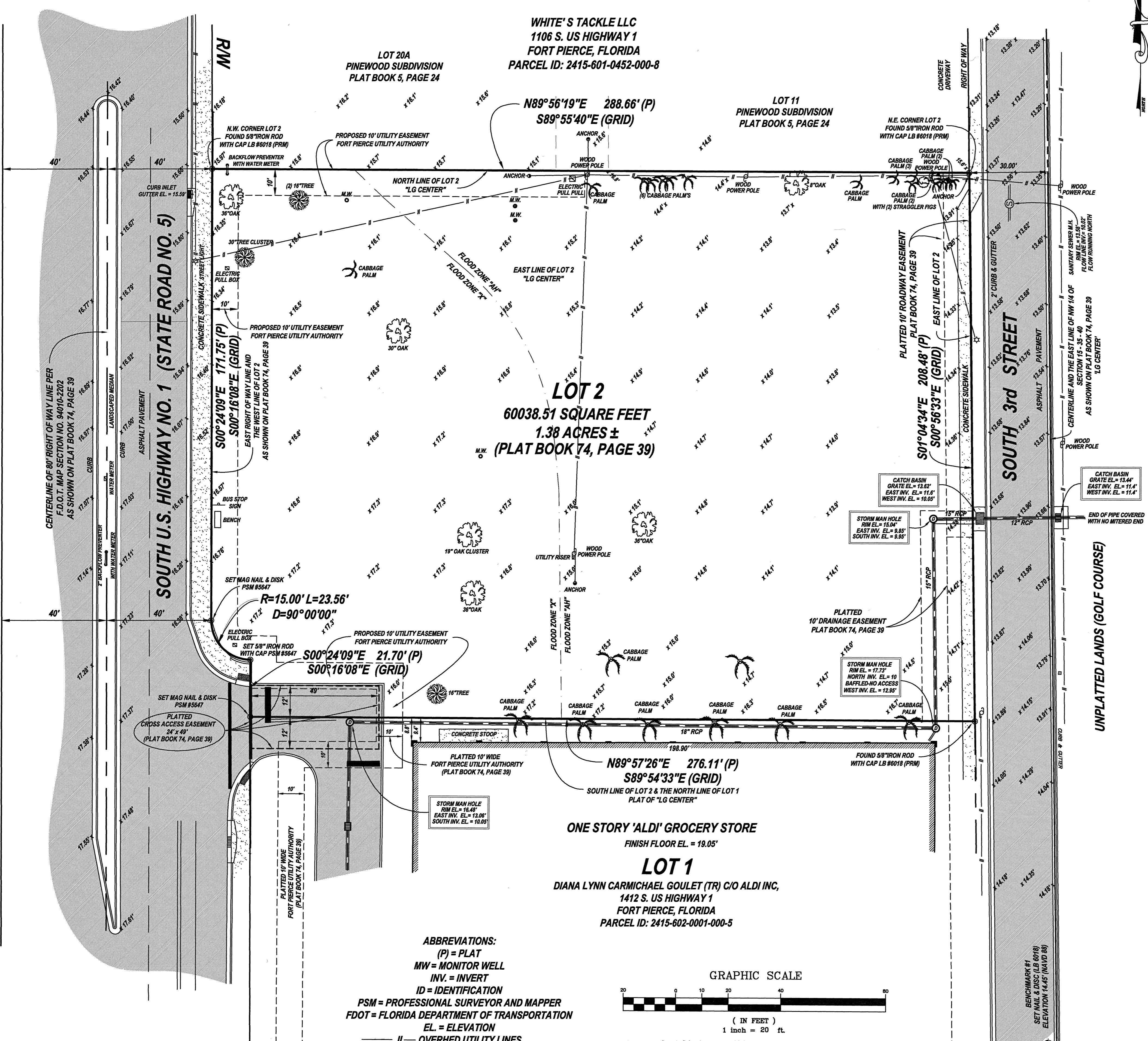


SUBJECT PROPERTY LIES IN THE N.W. 1/4 OF SECTION 15, TOWNSHIP 35 SOUTH, RANGE 40 EAST CITY OF FORT PIERCE, ST. LUCIE COUNTY, FLORIDA



LOCATION MAP: NOT TO SCALE



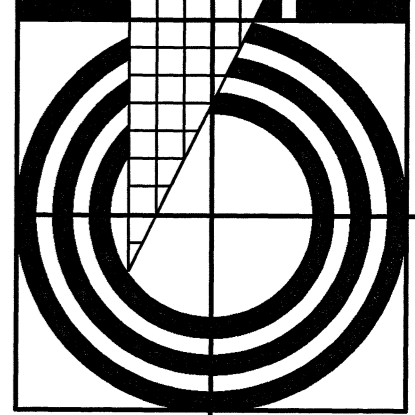
DATE	REVISIONS

BOUNDARY AND TOPOGRAPHIC SURVEY

PREPARED FOR: LGFTP1, LLC,
A FLORIDA LIMITED LIABILITY COMPANY

CRAIG WATSON AND ASSOCIATES LLC
PROFESSIONAL SURVEYING MAPPING

2240 NE DIXIE HIGHWAY · JENSEN BEACH · FLORIDA · 34957
O 772-334-0868 C 772-260-0249 craigwatson@live.com



2240 NE DIXIE HIGHWAY
JENSEN BEACH, FL 34957
CRAIGWATSON@LIVE.COM
PHONE 772-334-0868
CELL 772-260-0249

DATE: 7-22 THRU 8-4-21
SCALE: 1" = 20'
DWNG. BY: C.D.W.
CHECKED BY: C.D.W.
JOB NUMBER: 21183

SHEET NUMBER
1 OF 1

CRAIG D. WATSON
PROFESSIONAL SURVEYOR & MAPPER
NO. 5647 STATE OF FLORIDA