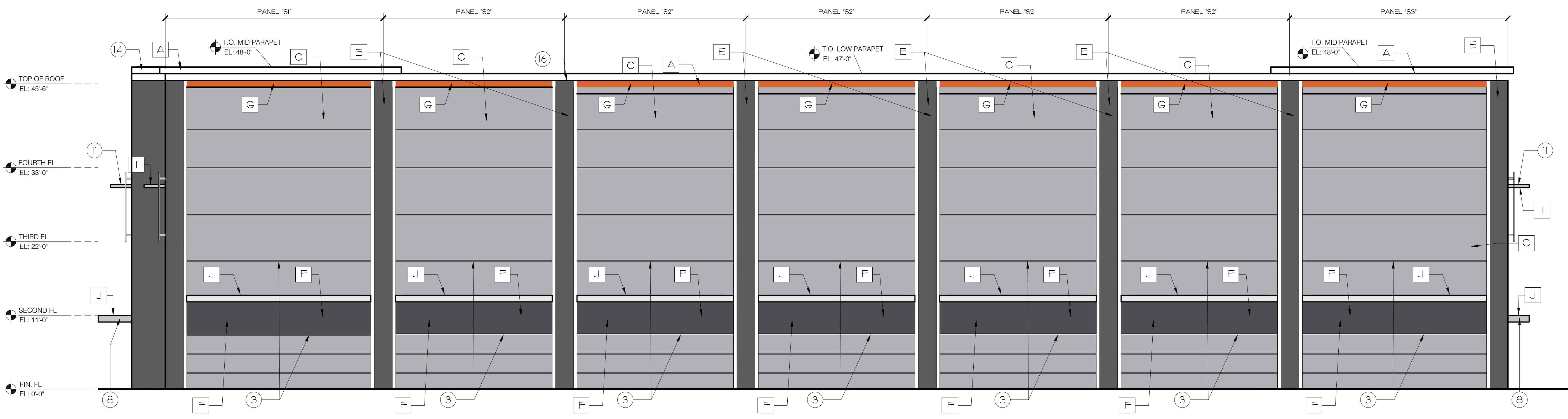


NORTH ELEVATION
SCALE: 1/8" = 1'-0"



SOUTH ELEVATION
SCALE: 1/8" = 1'-0"

ELEVATIONS KEY NOTES

1 PANEL REVEAL TYPE 'A'	9 15' DEEP ALUMINUM CANOPY
2 PANEL REVEAL TYPE 'B'	10 TENANT SIGN - NOT PART OF THIS PERMIT.
3 PANEL REVEAL TYPE 'C'	11 3' DEEP ALUMINUM CANOPY
4 PANEL REVEAL TYPE 'D'	12 IMPACT STOREFRONT SEE SCHEDULE
5 PANEL REVEAL TYPE 'E'	13 15' DEEP ALUMINUM CANOPY
6 WALL MOUNTED EXT. LIGHT FIXTURE	14 PREFAB CORNICE TRIM 'A'
7 EXT. METAL DOOR SEE SCHEDULE	15 PREFAB CORNICE TRIM 'B'
8 5' DEEP ALUMINUM CANOPY	16 PREFAB CORNICE TRIM 'C'

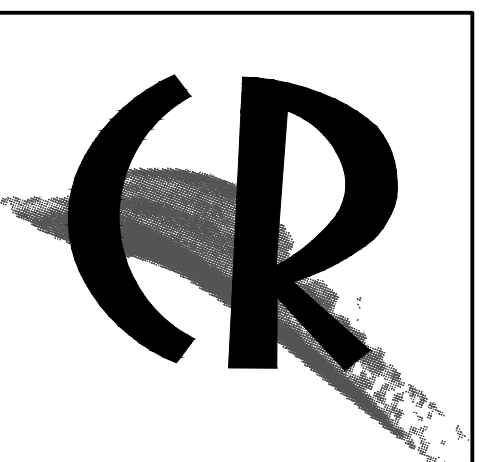
BUILDING FINISHES AND PAINT COLORS

SHERWIN-WILLIAMS

A EXTRA WHITE	SW 7006	
B GRAY SCREEN	SW 7071	
C ONLINE	SW 7072	
D AFRICAN GRAY	SW 9162	
E SOFTWARE	SW 7074	
F WEB GRAY	SW 7075	
G ORANGE ACCENT	PIT-T-TECH 90-477 FS 101	
H LIGHT GRAY GLAZING		
I MILL ALUMINUM		
J WHITE METAL		

REVISIONS:

FT. PIERCE SELF STORAGE FACILITY
1300 S US Highway 1, Ft. Pierce, FL 34950
Owner/Dev.: FORT PIERCE SELF STORAGE LLC - 14011 SW 20th Street, MIAMI, FL 33175



CABRERA RAMOS Architects, Inc.

9851 NW 58 STREET, #107
DORAL, FLORIDA 33178
T:305.593.0750 F:305.593.8862
AA C001621

MIGUEL A. CABRERA JR., R.A.
State Reg. No. AR13118

ROSA E. RAMOS-BOTTA, R.A.
State Reg. No. AR15209

©2022 CABRERA RAMOS ARCHITECTS, INC.
The Design and Drawings for this Project are the property of the Architect and are protected under the Copyright Protection Act.

DATE: 10-03-2022

DRAWN: GPM

CHECKED BY: RRB

JOB NO.: 2715-22

SEAL

SHEET NO.

A-3.0

ELEVATIONS