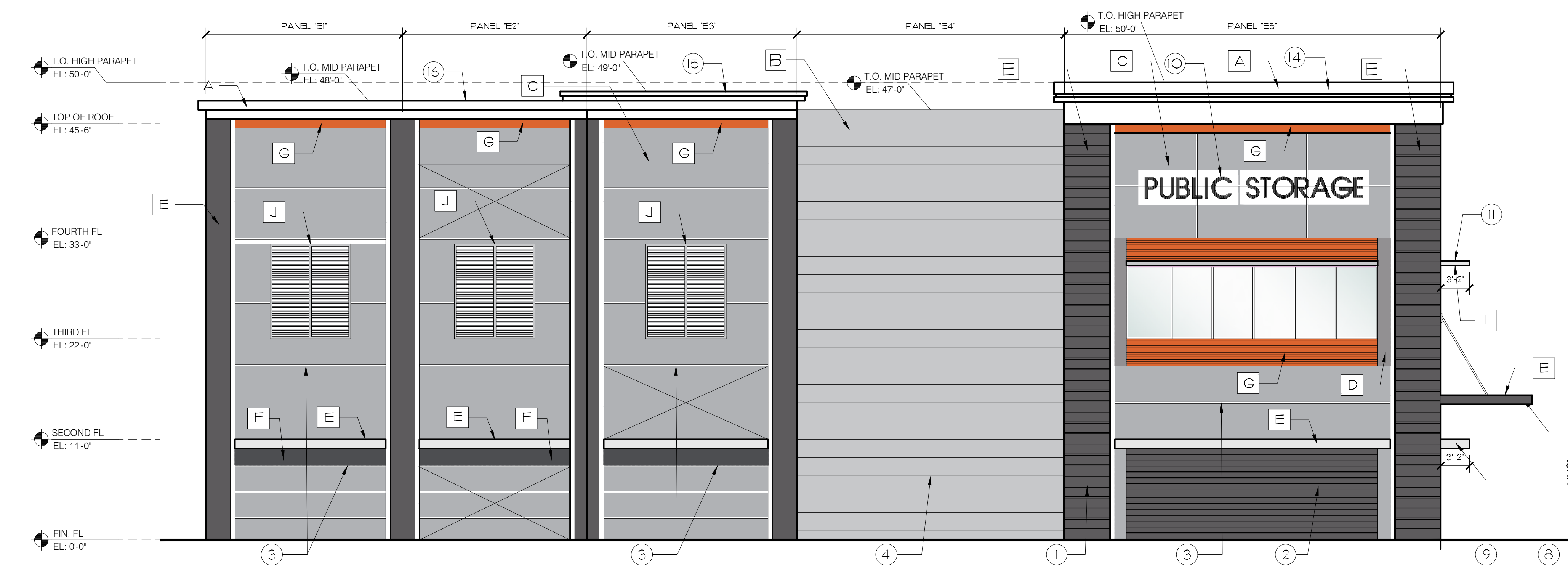




**WEST ELEVATION**  
SCALE: 1/8" = 1'-0"



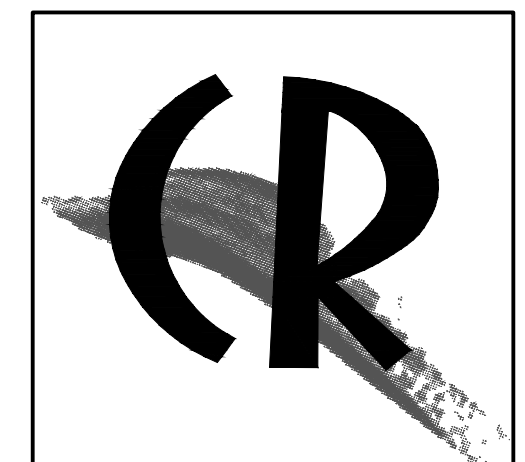
**EAST ELEVATION**  
SCALE: 1/8" = 1'-0"

| ELEVATIONS KEY NOTES              |                                           |
|-----------------------------------|-------------------------------------------|
| 1 PANEL REVEAL TYPE 'A'           | 9 15' DEEP ALUMINUM CANOPY                |
| 2 PANEL REVEAL TYPE 'B'           | 10 TENANT SIGN - NOT PART OF THIS PERMIT. |
| 3 PANEL REVEAL TYPE 'C'           | 11 3' DEEP ALUMINUM CANOPY                |
| 4 PANEL REVEAL TYPE 'D'           | 12 IMPACT STOREFRONT SEE SCHEDULE         |
| 5 PANEL REVEAL TYPE 'E'           | 13 15' DEEP ALUMINUM CANOPY               |
| 6 WALL MOUNTED EXT. LIGHT FIXTURE | 14 PREFAB CORNICE TRIM 'A'                |
| 7 EXT. METAL DOOR SEE SCHEDULE    | 15 PREFAB CORNICE TRIM 'B'                |
| 8 5' DEEP ALUMINUM CANOPY         | 16 PREFAB CORNICE TRIM 'C'                |

| BUILDING FINISHES AND PAINT COLORS |                    |                         |
|------------------------------------|--------------------|-------------------------|
| SHERWIN-WILLIAMS                   |                    |                         |
| A                                  | EXTRA WHITE        | SW 7006                 |
| B                                  | GRAY SCREEN        | SW 7071                 |
| C                                  | ONLINE             | SW 7072                 |
| D                                  | AFRICAN GRAY       | SW 9162                 |
| E                                  | SOFTWARE           | SW 7074                 |
| F                                  | WEB GRAY           | SW 7075                 |
| G                                  | ORANGE ACCENT      | PITT-TECH 90-477 PS 101 |
| H                                  | LIGHT GRAY GLAZING |                         |
| I                                  | MILL ALUMINUM      |                         |
| J                                  | WHITE METAL        |                         |

REVISIONS:

**FT. PIERCE SELF STORAGE FACILITY**  
1300 S US Highway 1, Ft. Pierce, FL 34950  
Owner/Dev.: FORT PIERCE SELF STORAGE LLC - 14011 SW 20th Street, MIAMI, FL 33175



**CABRERA RAMOS**  
Architects, Inc.

9851 NW 58 STREET, #107  
DORAL, FLORIDA 33178  
T:305.593.0750 F:305.593.8862  
AA C001621

MIGUEL A. CABRERA JR., R.A.  
State Reg. No. AR13118

ROSA E. RAMOS-BOTTA, R.A.  
State Reg. No. AR15209

©2022 CABRERA RAMOS ARCHITECTS, INC.  
The Design and Drawings for this Project are the property of the Architect and are protected under the Copyright Protection Act.

DATE: 10-03-2022

DRAWN: GPM

CHECKED BY: RRB

JOB NO.: 2715-22

SEAL

SHEET NO.

**A-3.1**

ELEVATIONS