

Existing Protected Tree Chart

Tag #	Common Name	DBH	Height of Clear Trunk	* Condition	Status
1	Laurel oak	17		Poor	Remove
2	Cabbage palm		13	Good	Remove
3	Cabbage palm		25	Good	Remove
4	Laurel oak	38		Fair	Remove
5	Slash pine	18.5		Good	Remove
6	Slash pine	17		Fair	Remove
7	Slash pine	18		Good	Remove
8	Slash pine	18.5		Good	Remove
9	Slash pine	18		Fair	Remove
10	Slash pine	16.5		Good	Remove
11	Slash pine	23		Good	Remove
12	Laurel oak	30		Good	Remove
13	Slash pine	27.5		Good	Remove
14	Slash pine	25.5		Good	Remove
15	Cabbage palm		32	Good	Remove
16	Laurel oak	31		Fair	Remove
17	Laurel oak	30		Fair	Remove
18	Laurel oak	40.5		Fair	Remove
19	Laurel oak	53		Fair	Remove
20	Laurel oak	18		Poor	Remove
21	Laurel oak	18		Poor	Remove
22	Laurel oak	17		Fair	Remove
23	Laurel oak	16.5		Fair	Remove
24	Cabbage palm		30	Good	Remove
25	Cabbage palm		32	Good	Remove
26	Cabbage palm		35	Good	Remove
27	Laurel oak	36		Fair	Remove
28	Cabbage palm		22	Good	Remove
29	Cabbage palm		11	Good	Remove
30	Laurel oak	31		Poor	Remove
31	Laurel oak	26.5		Poor	Remove
32	Laurel oak	32.5		Poor	Remove
33	Slash pine	19		Good	Remove
34	Slash pine	16		Fair	Remove
35	Slash pine	17		Poor	Remove
36	Slash pine	17.5		Good	Remove
37	Slash pine	20		Fair	Remove
38	Slash pine	14		Fair	Remove
39	Slash pine	14		Good	Remove
40	Slash pine	20.5		Good	Remove
41	Slash pine	18.5		Good	Remove
42	Slash pine	28		Good	Remove
43	Laurel oak	26.5		Poor	Remove
44	Laurel oak	26		Poor	Remove
45	Cabbage palm		16	Good	Remove
46	Laurel oak	27.5		Fair	Remove
47	Slash pine	15.5		Good	Remove
48	Slash pine	14		Fair	Remove
49	Slash pine	18.5		Good	Remove
50	Cabbage palm		12	Good	Remove
51	Laurel oak	36		Fair	Remove
52	Slash pine	16.5		Poor	Remove
53	Cabbage palm		10	Good	Remove
54	Cabbage palm		18	Good	Remove
55	Laurel oak	16		Poor	Remove
56	Laurel oak	15.5		Fair	Preserve
57	Cabbage palm		15	Good	Remove
58	Slash pine	17.5		Fair	Remove
59	Cabbage palm		12	Good	Remove
60	Laurel oak	49		Fair	Remove
61	Cabbage palm		27	Good	Remove
62	Cabbage palm		15	Good	Remove
63	Laurel oak	57		Fair	Remove
64	Cabbage palm		24	Good	Remove
65	Cabbage palm		30	Good	Remove
66	Cabbage palm		25	Good	Remove
67	Cabbage palm		15	Good	Remove
68	Cabbage palm		30	Good	Remove
69	Laurel oak	50		Fair	Remove
70	Cabbage palm		31	Good	Remove
71	Cabbage palm		28	Good	Remove
72	Cabbage palm		30	Good	Remove
73	Cabbage palm		33	Good	Remove
74	Cabbage palm		15	Good	Remove
75	Cabbage palm		22	Good	Remove
76	Slash pine	18.5		Good	Remove
77	Laurel oak	17.5		Poor	Remove
78	Cabbage palm		16	Good	Preserve
79	Slash pine	15.5		Good	Preserve
80	Laurel oak	16.5		Fair	Remove
81	Laurel oak	15.5		Poor	Remove
82	Cabbage palm		30	Good	Remove
83	Cabbage palm		14	Good	Remove
84	Cabbage palm		12	Good	Remove
85	Cabbage palm		30	Good	Remove
86	Cabbage palm		33	Good	Remove
87	Cabbage palm		27	Good	Remove
88	Cabbage palm		31	Good	Remove
89	Cabbage palm		31	Good	Remove
90	Cabbage palm		19	Good	Remove
91	Cabbage palm		10	Good	Remove
92	Cabbage palm		10	Good	Remove
93	Cabbage palm		13	Good	Remove
94	Laurel oak	24		Poor	Remove
95	Cabbage palm		16	Good	Remove
96	Laurel oak			Poor	Remove
97	Cabbage palm			Good	Remove
98	Cabbage palm			Good	Remove
99	Cabbage palm			Good	Remove



3500 SW Corporate Parkway, Suite 203  
Palm City, Florida 34990  
T 772.678.7200  
www.hjadesignstudio.com  
LA 0000905

Florida  
 Pulte Cornerstone  
 City of Fort Pierce  
 Existing Tree Survey / Removal Plan

Copyright  
The following drawings are instruments of service to the Landscape Architect. They are not products of design. All ideas, designs, arrangements, and plans indicated or represented by this drawing are owned by and the property of the designer, and were created, evolved, and developed for use on and in connection with the specified project. None of such ideas, designs, arrangements, or plans shall be used by or disclosed to any person, firm, or corporation for any purpose whatsoever without the written permission of the designer.

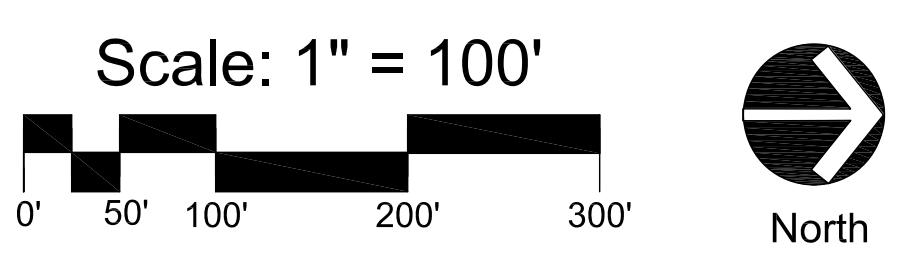
Job No. 2024-31  
 Drawn By TT  
 Checked By MH  
 Approved By MH  
 Submittal Dates 2-14-2025

Revision Dates

LP-1

Existing Tree Chart Summary

Protected Tree Inches to be Removed:	962 Inches
Protected Tree Inches to be Preserved:	31 Inches
	931 Inches
Required Inches for On-site Tree Replacement: (931" x 2)	1,862 Inches
Protected Palm Trees to be Removed:	41 Trees
Protected Palm Trees to be Preserved:	1 Tree
	40 Trees
Required On-site Palm Tree Replacement: (40 Trees x 2)	80 Trees



Note:  
 1. Condition of existing trees provided by a certified arborist. Please see submitted "Tree Condition Rating Assessment", dated 12/3/24 for more information. Existing trees rated as "Poor" have not been included or calculated towards required inches for tree replacement.

## Landscape Data

### Planned Development Landscape Requirements:

#### Perimeter Landscape Strip adjacent to an off-site Right-of-Way:

A 15' minimum landscape strip shall be provided along the entire perimeter of the site's property boundary adjacent to an off-site right-of-way, except where access drives or sidewalk connections are located. A minimum of 1 tree per 30 LF based on the entire length of the landscape strip and a continuous shrub hedge shall be required. Trees may be grouped together rather than evenly spaced 30' on center. Required shrub hedges shall be spaced a maximum of 36" on center and shall maintained to form a 36" or higher continuous visual screen within a maximum of 1 year from the time of installation. The remainder of the landscape strip shall be completely covered with sod, ground cover or other landscape treatment. Landscape berms and 6' fences or walls shall be allowed within landscape strips.

East Perimeter Buffer adjacent to S Jenkins Road: 1,827 LF  
Trees Required: (1,827 LF / 30) 61 Trees  
Trees Provided: 61 Trees (49 Trees + 36 Palms @ 3:1)

West Perimeter Buffer adjacent to Interstate 95 (I-95): 1,770 LF  
Trees Required: (1,770 LF / 30) 59 Trees  
Trees Provided: 59 Trees (24 Trees + 105 Palms @ 3:1)

#### Perimeter Landscape Strip adjacent to an abutting Property:

A 15' minimum landscape strip shall be provided along the entire perimeter of the site's property boundary adjacent to an abutting property. A minimum of 1 tree per 30 LF based on the entire length of the landscape strip and a continuous shrub hedge shall be required. Trees may be grouped together rather than evenly spaced 30' on center. Required shrub hedges shall be spaced a maximum of 36" on center and shall maintained to form a 36" or higher continuous visual screen within a maximum of 1 year from the time of installation. The remainder of the landscape strip shall be completely covered with sod, ground cover or other landscape treatment. Landscape berms and 6' fences or walls shall be allowed within landscape strips.

North & West Perimeter Buffer: 1,077 LF  
Trees Required: (1,077 LF / 30) 36 Trees  
Trees Provided: 36 Trees (30 Trees + 2 Existing Trees + 12 Palms @ 3:1)

South Perimeter Buffer: 1,508 LF  
Trees Required: (1,508 LF / 30) 50 Trees  
Trees Provided: 50 Trees (49 Trees + 3 Palms @ 3:1)

#### Street Trees along Internal Roadways:

Street trees shall be provided along both sides of internal roadways at a minimum of one (1) tree per fifty (50) linear feet. Trees may be grouped closer together (as seen fit) rather than evenly spaced fifty (50) feet on center. Trees may be placed along the sides of roadways within the right-of-way or placed directly adjacent.

Internal Roadway Linear Footage: 14,321 LF  
Trees Required: (14,321 LF / 50) 287 Trees  
Trees Provided: 287 Trees (281 Trees + 18 Palms @ 3:1)

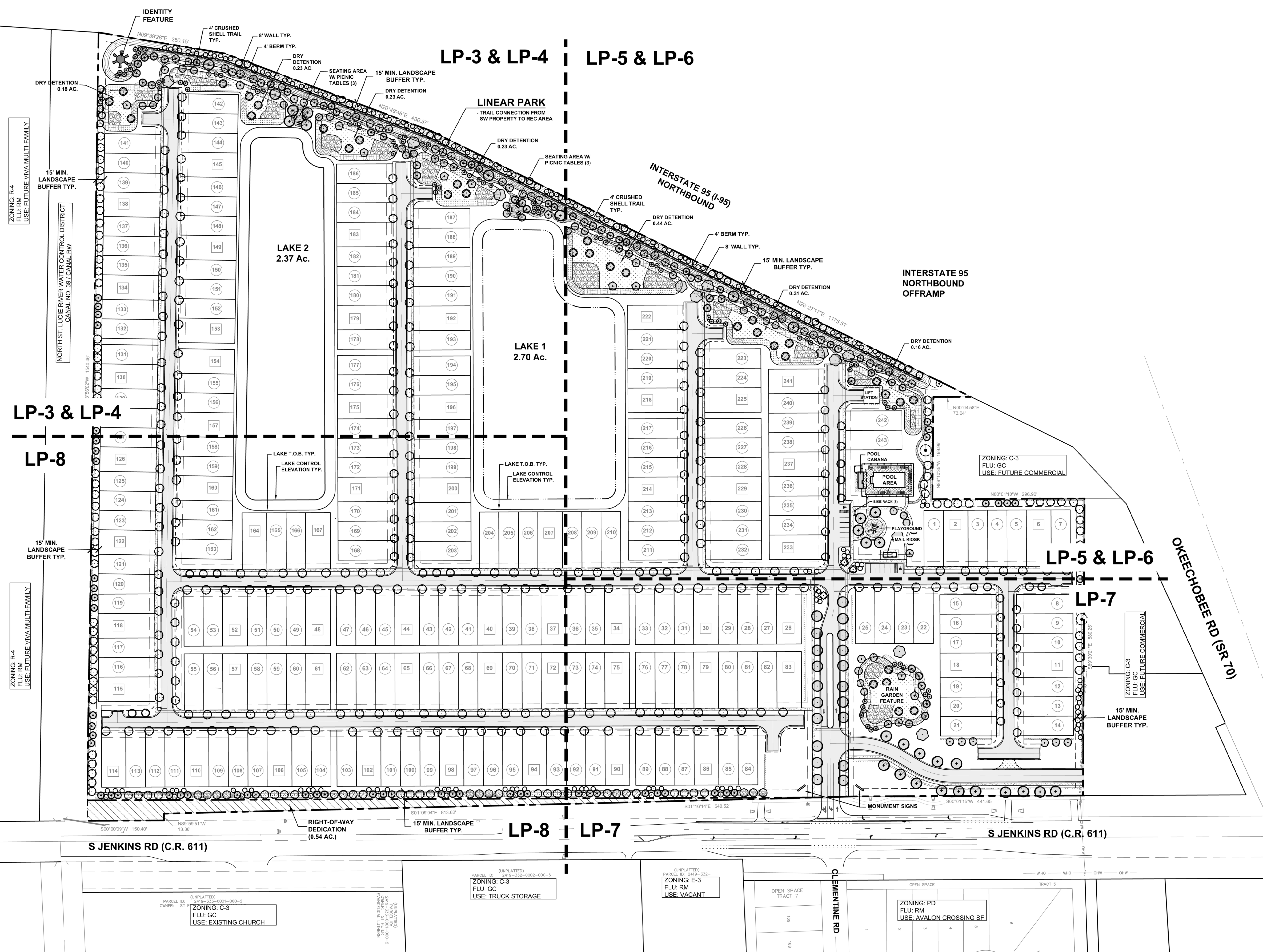
## Tree Mitigation Data

Protected Palms :  
Required Replacement Palm Trees 80 Palm Trees  
Provided On-site Replacement Palm Trees 80 Palm Trees

Protected Trees :  
Total Required Replacement Inches 1,862 Inches  
Provided On-site Replacement Inches 1,890.5 Inches  
Additional Trees for Mitigation 893 inches  
Increased Size of Required Trees (237 Trees x .5") 118.5 inches  
Additional Understory Native Plantings :  
10,013 - 1 Gallon Native Plants (1" per 24 plants) 417 inches  
5,555 - 3 Gallon Native Plants (1" per 12 plants) 462 inches  
Total inches Provided 1,890.5 inches

Notes:  
- See "Tree Mitigation" Category within Tree Schedule on Sheet LP-9 for total provided mitigation inches per tree  
- Additional trees provided for Mitigation are shown on plan with gray solid hatch  
- For Additional Native Understory Plantings and quantities shown above, see "Additional Shrubs & GC" category within Shrub Schedule on sheet LP-9.

Copyright  
The following drawings are instruments of service to the Landscape Architect. They are not products of design. All ideas, designs, arrangements and plans indicated or represented by this drawing are owned by and the property of the designer and were created, evolved, and developed for use on and in connection with the specified project. None of such ideas, designs, arrangements, or plans shall be used by or disclosed to any person, firm, or corporation for any purpose whatsoever without the written permission of the designer.



## Landscape Notes

- Plant materials shall meet or exceed the standards for Florida No. 1 as set out in the most current edition of "Grades and Standards for Nursery Plants Part 1 and Part 2", State of Florida, Department of Agriculture, Tallahassee.
- All trees required by this article (excluding palms that are exempt from the grades and standards) shall have a Florida No. 1 or better "Grades and Standards" certification tag attached at time of delivery through final inspection.
- Grass sod shall be clean and free of weeds, pests and diseases.
- Planting soil for all landscaped areas shall consist of existing soil mixed with fifty (50) per cent recycled top soil. Such planting soil shall be generally indigenous to the locale, free of debris, roots, clay, stones, plants or other foreign materials. The planting soil shall extend to an appropriate depth so as to eliminate any hindrance to planting operations or detriment to good plant growth. Compliance with these soil requirements shall be verified as part of the final inspection.
- Landscaped areas shall be covered in their entirety with shrubs, ground cover, turf, or three (3) inches of bulk organic mulch or other suitable material which permits percolation and is approved by the department, and shall additionally contain a screen of landscaping which shall be installed and maintained so as to form a thirty-six-inch or higher continuous, unbroken, solid, visual screen within a maximum of one year after the landscaping takes place, except in clear vision areas required in section 22-53.
- Do not place any soil or mulch over the root ball. If stakes or guide wires are used to support a tree, the wire must be covered with protective material where it is in contact with the tree and the stakes or guide wires must be removed after one year.
- All landscaping must be protected from vehicular and pedestrian traffic by the installation of curbing, wheel stops or other protective devices along the perimeter of any landscaping which adjoins vehicular use areas or sidewalks. These protective devices shall have a minimum height of six (6) inches above grade.
- No parking, display of vehicles or outside storage or display of merchandise is permitted in or over any required landscape area, nor are vehicles permitted to overhang any required landscaped area.
- To minimize traffic hazards at street or driveway intersections, all landscaping installations must provide unobstructed views.
- Any irrigation system placed on city right-of-way will be the responsibility of the property owner who shall relocate, replace or repair the system as appropriate in the event it is damaged due to permitted construction in the right-of-way.
- Prior to issuance of certificate of occupancy, final landscape installation shall be certified as complete and in conformance to the approved landscape plan by submission of a certification letter by a landscape architect.
- Property owners shall maintain all required landscaping so that it continues to present a healthy, neat and orderly appearance free of refuse and debris.
- Vegetation required shall be replaced with equivalent vegetation if it is not living. All trees for which credit is awarded and which subsequently die shall be replaced by the same number of living trees.
- Maintenance shall include sufficient weeding, watering, fertilizing, pruning, mowing, edging, mulching and other horticultural practices so as to assure that the landscaping continues to maintain a healthy, neat and orderly appearance.
- No person shall, directly or indirectly, cut down, substantially alter, destroy, remove, relocate, damage or authorize any such act involving a protected tree situated on land within the city, without first obtaining a tree removal permit.
- Removal, trimming, pruning or alteration of any tree or vegetation in an existing utility easement or public right-of-way provided such work is done by or under the control of the operating utility company and said company has received all necessary licenses or permits to provide utility service within the easement.
- This plan has been designed to meet the tree planting requirements contained within the FPL document entitled "Plant the Right Tree in the Right Place". For existing or proposed utilities, no tree shall be planted where it could, at a mature height conflict with overhead power lines.
  - Large trees (height at maturity of more than 30') shall be planted no closer than a horizontal distance of 30' from the nearest overhead power line.
  - Medium height trees (height at maturity between 20' and 30') shall be offset at least 20' and small trees (height at maturity of less than 20') require no offset.
  - No tree shrubs, hedges or vines shall be planted within 5' of an existing or proposed utility pole, guy wire or pad-mounted transformer.
  - Palms should be planted at a distance equal to or greater than the average frond length plus two (2) feet from power lines.
- Tree locations are conceptual. Locations are subject to change at the time of final construction plans based on utility and driveway locations.
- Sod areas, callouts and schedule to be provided at the time of final landscape construction plans.

**Legend**

- Existing Trees to be Preserved (on-site)  
Note: See Existing Tree Chart on Sheet LP-1 for more information regarding trees to be preserved or removed.
- Proposed Additional Trees for Mitigation

Scale: 1" = 100'

North

Job No. 2024-31  
Drawn By TT  
Checked By MH  
Approved By MH  
Submission Dates 2-14-2025  
Revision Dates

Florida

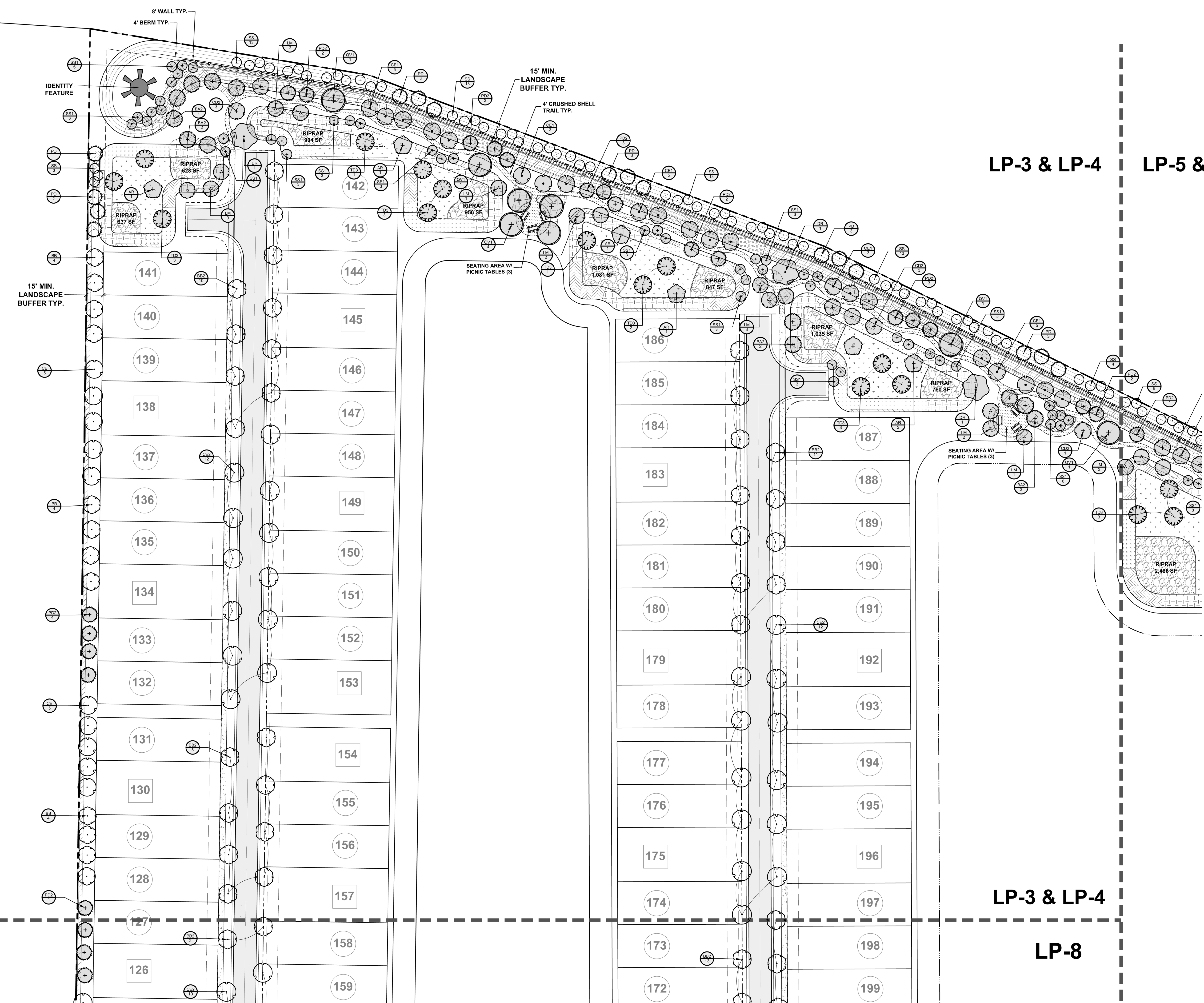
**Pulte Cornerstone**  
City of Fort Pierce  
Landscape Plan

Copyright  
The following drawings are instruments of service to the Landscape Architect. They are not products of design. All ideas, designs, arrangements and plans indicated or represented by this drawing are owned by and the property of the designer, and were created, evolved, and developed for use on and in connection with the specified project. None of such ideas, designs, arrangements, or plans shall be used by or disclosed to any person, firm, or corporation for any purpose whatsoever without the written permission of the designer.

Job No. 2024-31  
Drawn By TT  
Checked By MH  
Approved By MH  
Submission Dates 2-14-2025

Revision Dates

**LP-3**



**LP-3 & LP-4**    **LP-5 & LP-6**

**LP-3 & LP-4**

**LP-8**

**Legend**

- Existing Trees to be Preserved (on-site)  
Note: See Existing Tree Chart on Sheet LP-1 for more information regarding trees to be preserved or removed.
- Proposed Additional Trees for Mitigation

Scale: 1" = 40'

North

Florida

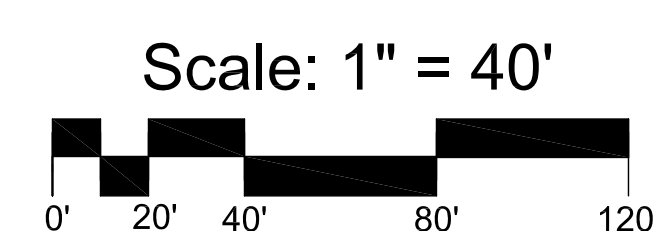
**Pulte Cornerstone**

City of Fort Pierce  
**Landscape Plan**

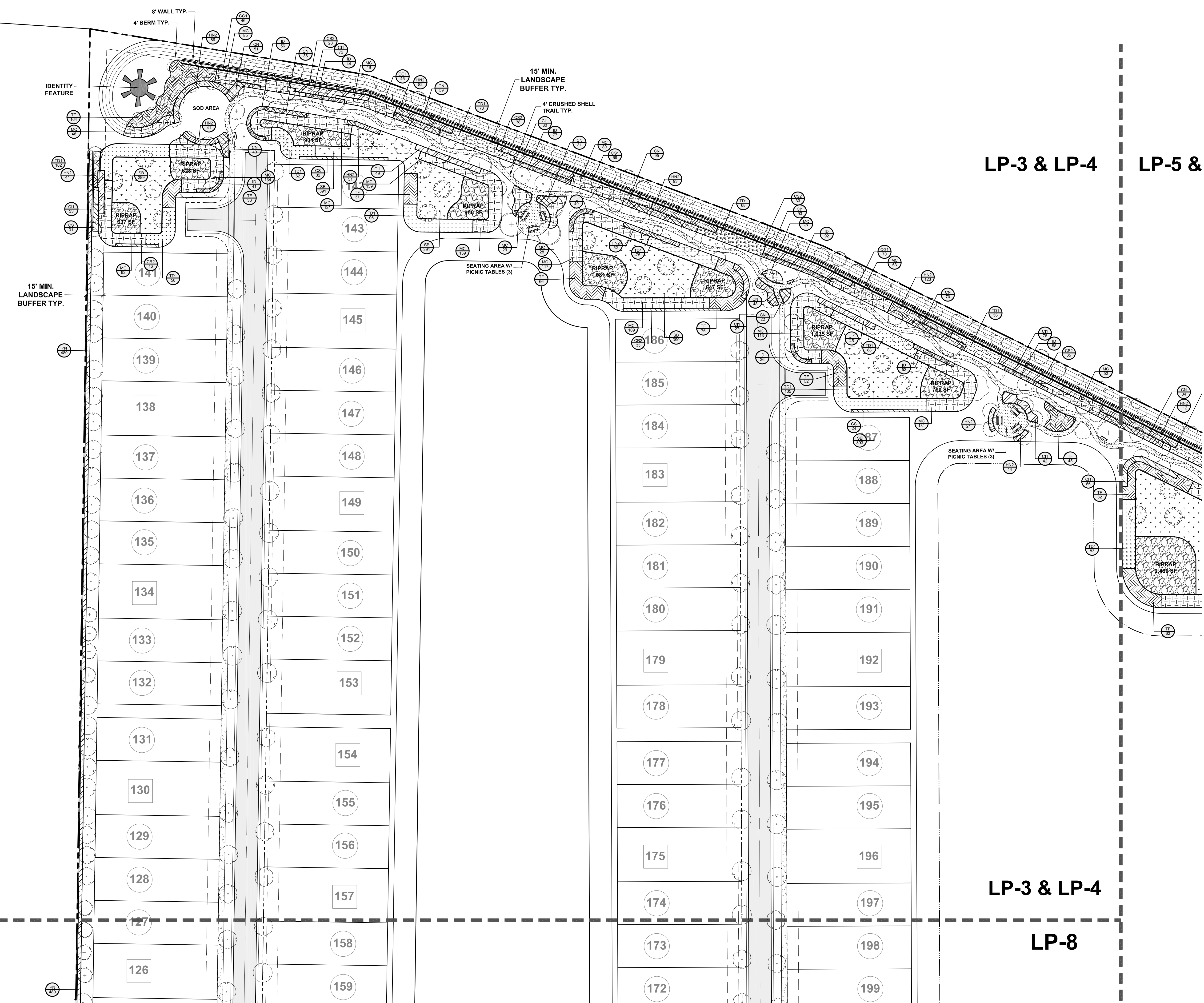
Copyright  
The following drawings are instruments of service to the  
Landscape Architect. They are not products of design. All  
ideas, designs, arrangements, and plans indicated or  
represented by this drawing are owned by and the property of  
the designer, and were created, evolved, and developed for  
use on and in connection with the specified project. None of  
such ideas, designs, arrangements, or plans shall be used by  
or disclosed to any person, firm, or corporation for any  
purpose whatsoever without the written permission of the  
designer.

Job No. 2024-31  
Drawn By TT  
Checked By MH  
Approved By MH  
Submittal Dates 2-14-2025

Revision Dates



**LP-4**



Florida

**Pulte Cornerstone**

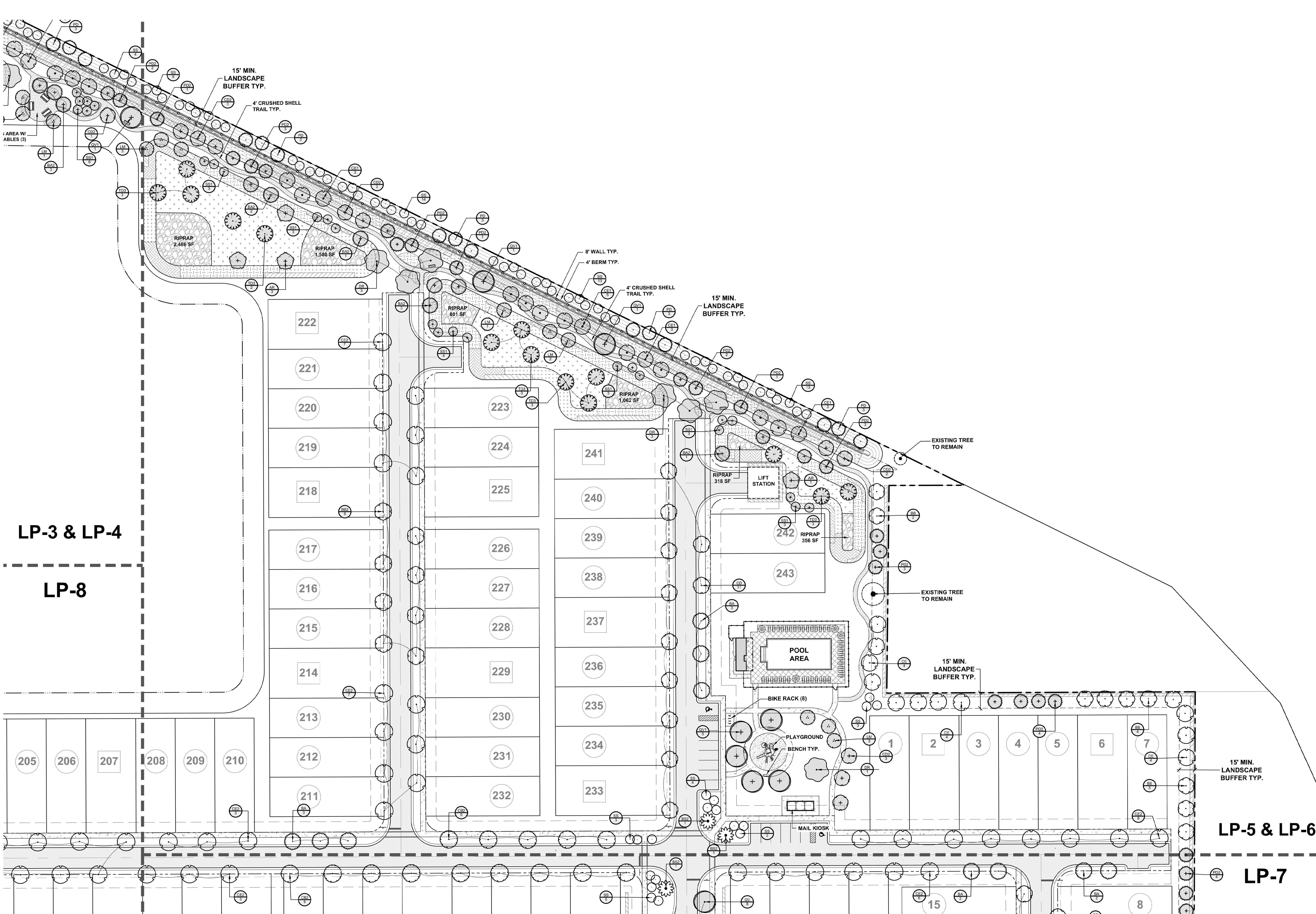
City of Fort Pierce  
Landscape Plan

Copyright  
The following drawings are instruments of service to the Landscape Architect. They are not products of design. All ideas, designs, arrangements and plans indicated or represented by this drawing are owned by and the property of the designer, and were created, evolved, and developed for use on and in connection with the specified project. None of such ideas, designs, arrangements, or plans shall be used by or disclosed to any person, firm, or corporation for any purpose whatsoever without the written permission of the designer.

Job No. 2024-31  
Drawn By TT  
Checked By MH  
Approved By MH  
Submittal Dates 2-14-2025

Revision Dates

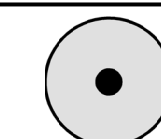
**LP-5**



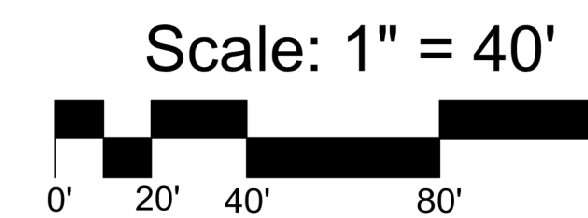
**Legend**



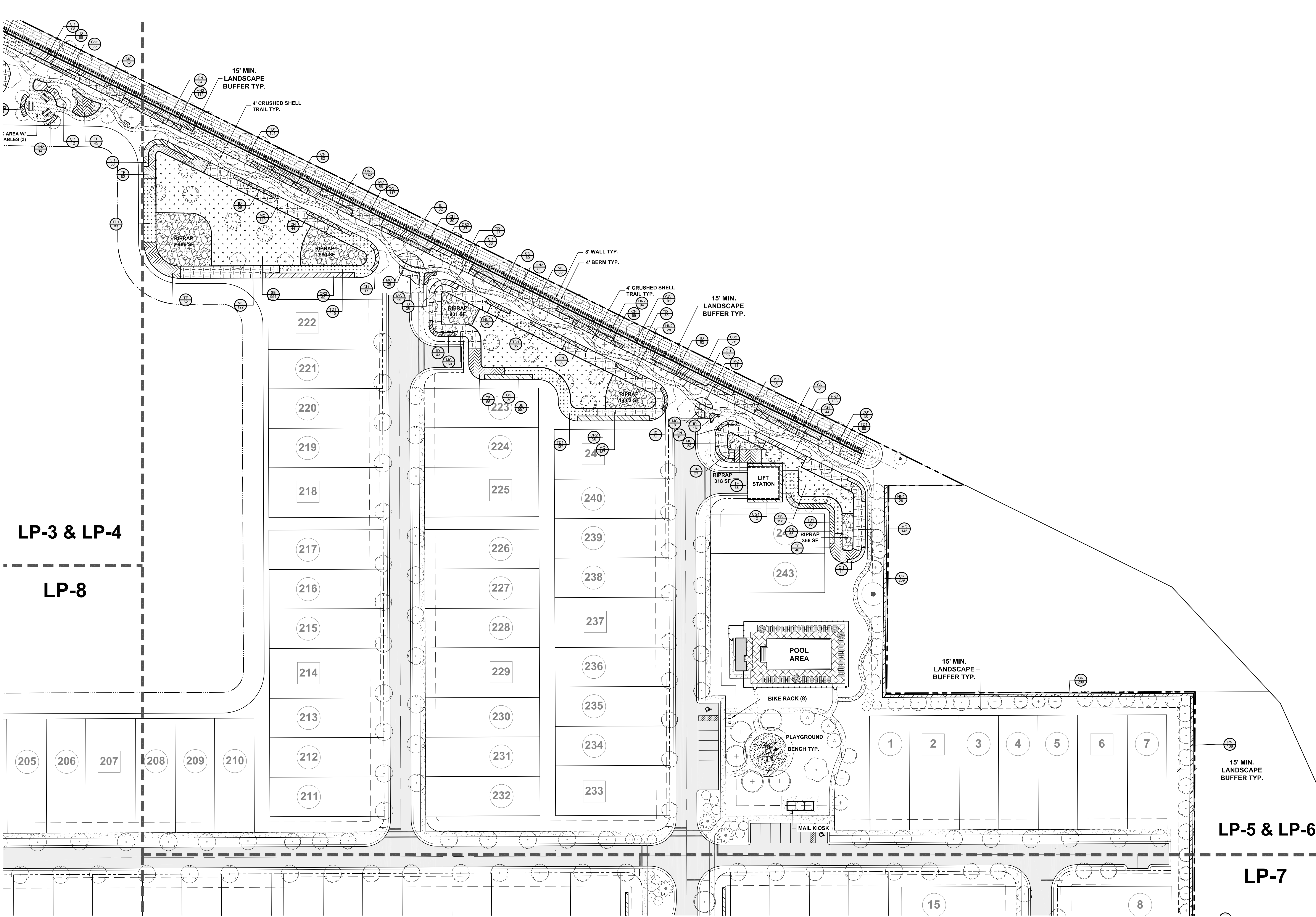
Existing Trees to be Preserved (on-site)  
Note: See Existing Tree Chart on Sheet LP-1 for more information regarding trees to be preserved or removed.



Proposed Additional Trees for Mitigation



North

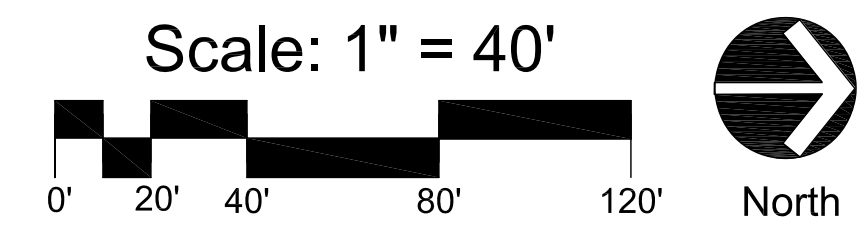


Florida

**Pulte Cornerstone**  
City of Fort Pierce  
Landscape Plan

Copyright  
The following drawings are instruments of service to the Landscape Architect. They are not products of design. All ideas, designs, arrangements, and plans indicated or represented by this drawing are owned by and the property of the designer, and were created, evolved, and developed for use on and in connection with the specified project. None of such ideas, designs, arrangements, or plans shall be used by or disclosed to any person, firm, or corporation for any purpose whatsoever without the written permission of the designer.

Job No.	2024-31
Drawn By	TT
Checked By	MH
Approved By	MH
Submittal Dates	2-14-2025
Revision Dates	



**LP-6**

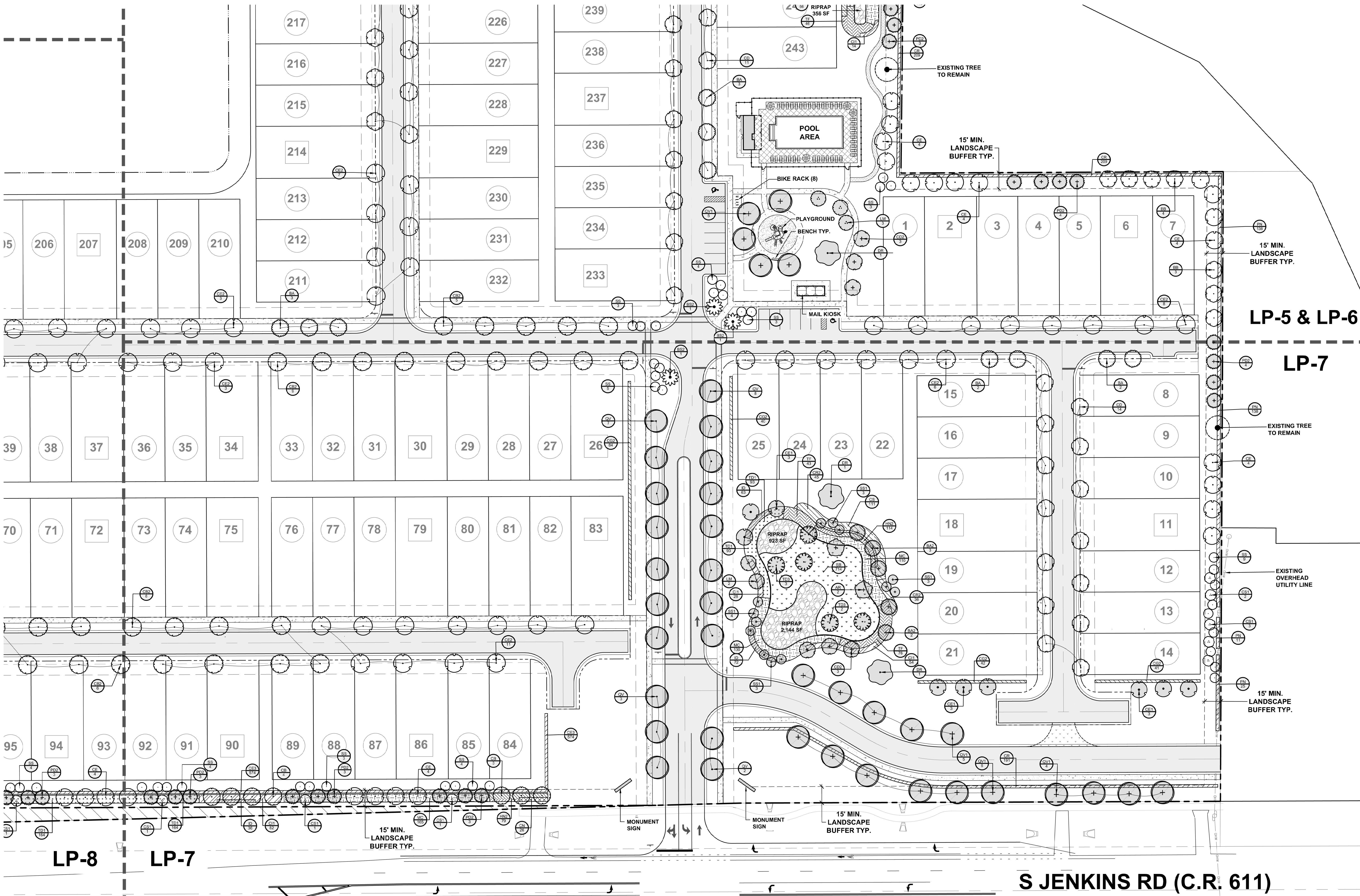
**Pulte Cornerstone**  
City of Fort Pierce  
Landscape Plan

Copyright  
The following drawings are instruments of service to the Landscape Architect. They are not products of design. All ideas, designs, arrangements and plans indicated or represented by this drawing are owned by and the property of the designer, and were created, evolved, and developed for use on and in connection with the specified project. None of such ideas, designs, arrangements, or plans shall be used by or disclosed to any person, firm, or corporation for any purpose whatsoever without the written permission of the designer.



Job No. 2024-31  
Drawn By TT  
Checked By MH  
Approved By MH  
Submittal Dates 2-14-2025

Revision Dates


**LP-7**




**Legend**

-  Existing Trees to be Preserved (on-site)  
Note: See Existing Tree Chart on Sheet LP-1 for more information regarding trees to be preserved or removed.
-  Proposed Additional Trees for Mitigation

Scale: 1" = 40'



North 



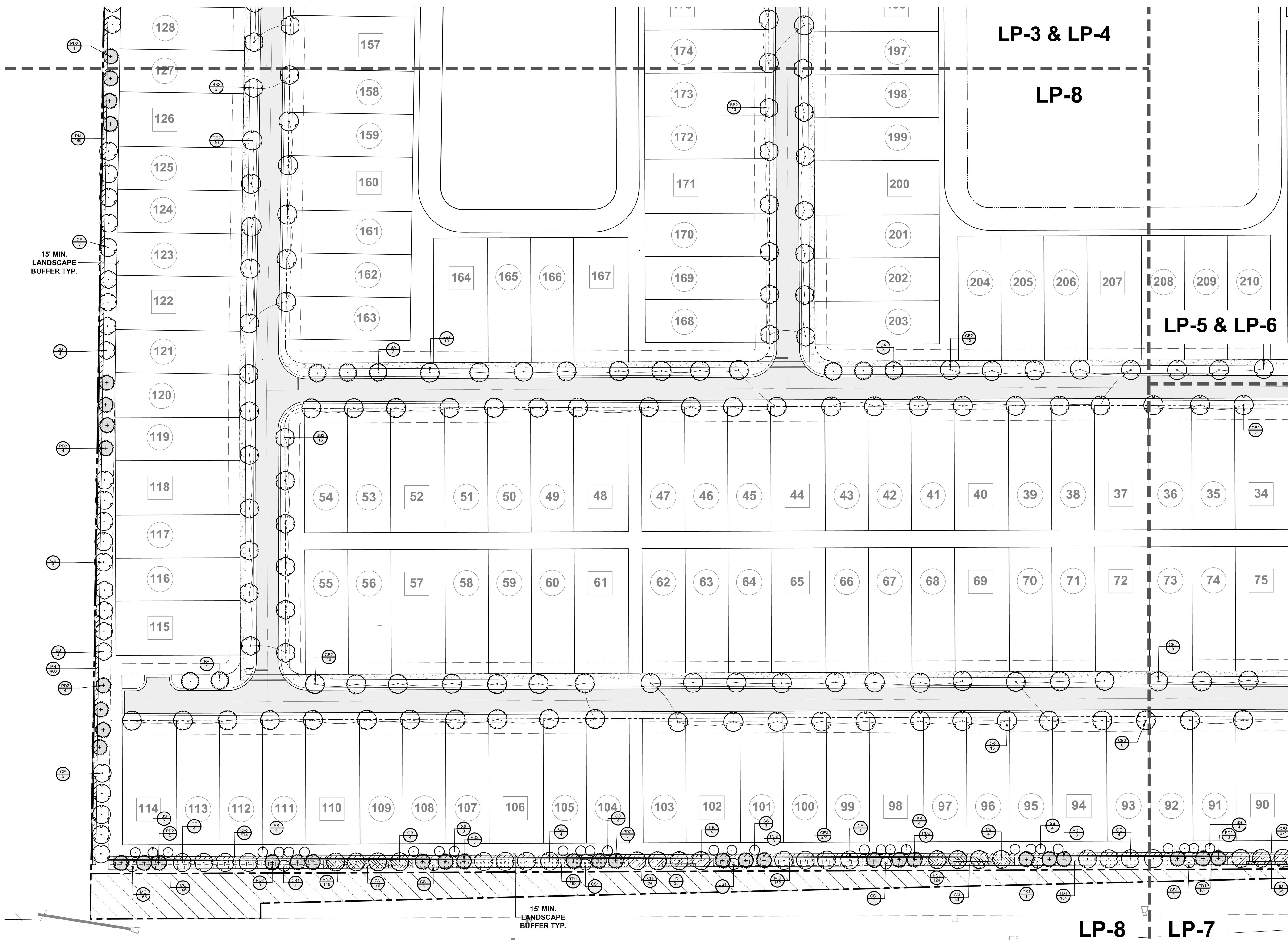
3500 SW Corporate Parkway, Suite 203  
 Palm City, Florida 34990  
 T 772.678.7200  
 www.hjadesignstudio.com  
 LA 0000905

Florida

**Pulte Cornerstone**  
 City of Fort Pierce  
 Landscape Plan

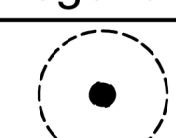
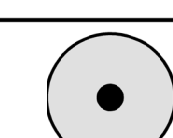
Copyright  
 The following drawings are instruments of service to the Landscape Architect. They are not products of design. All ideas, designs, arrangements and plans indicated or represented by this drawing are owned by and the property of the designer, and were created, evolved, and developed for use on and in connection with the specified project. None of such ideas, designs, arrangements, or plans shall be used by or disclosed to any person, firm, or corporation for any purpose whatsoever without the written permission of the designer.

Job No. 2024-31  
 Drawn By TT  
 Checked By MH  
 Approved By MH  
 Submittal Dates 2-14-2025  
 Revision Dates



**S JENKINS RD (C.R. 611)**

**Legend**

-  Existing Trees to be Preserved (on-site)  
Note: See Existing Tree Chart on Sheet LP-1 for more information regarding trees to be preserved or removed.
-  Proposed Additional Trees for Mitigation

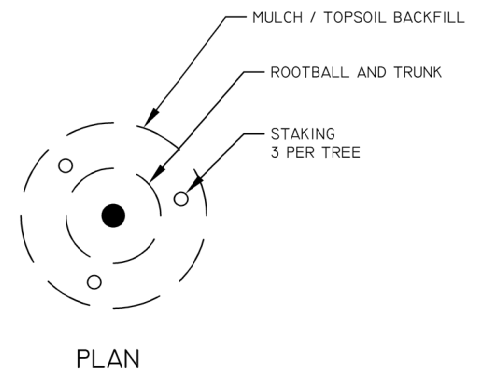
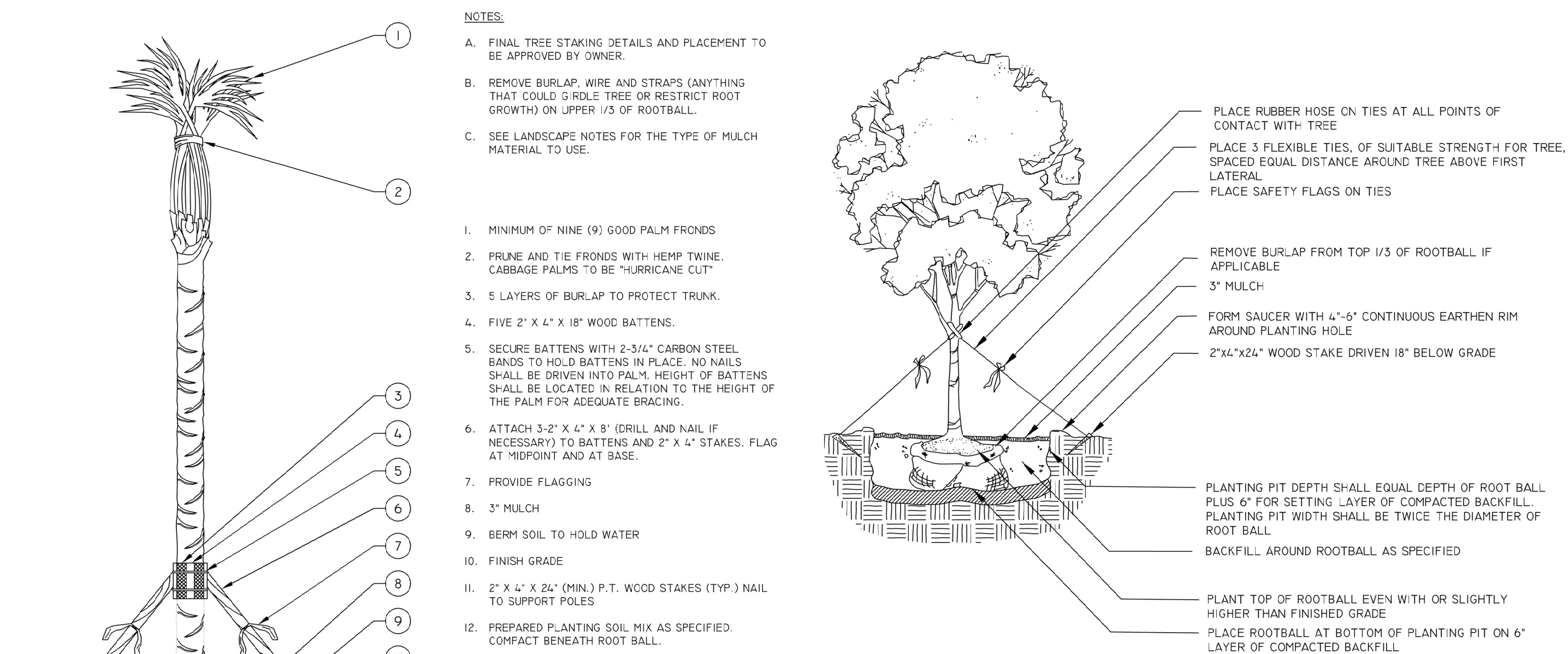


Scale: 1" = 40'

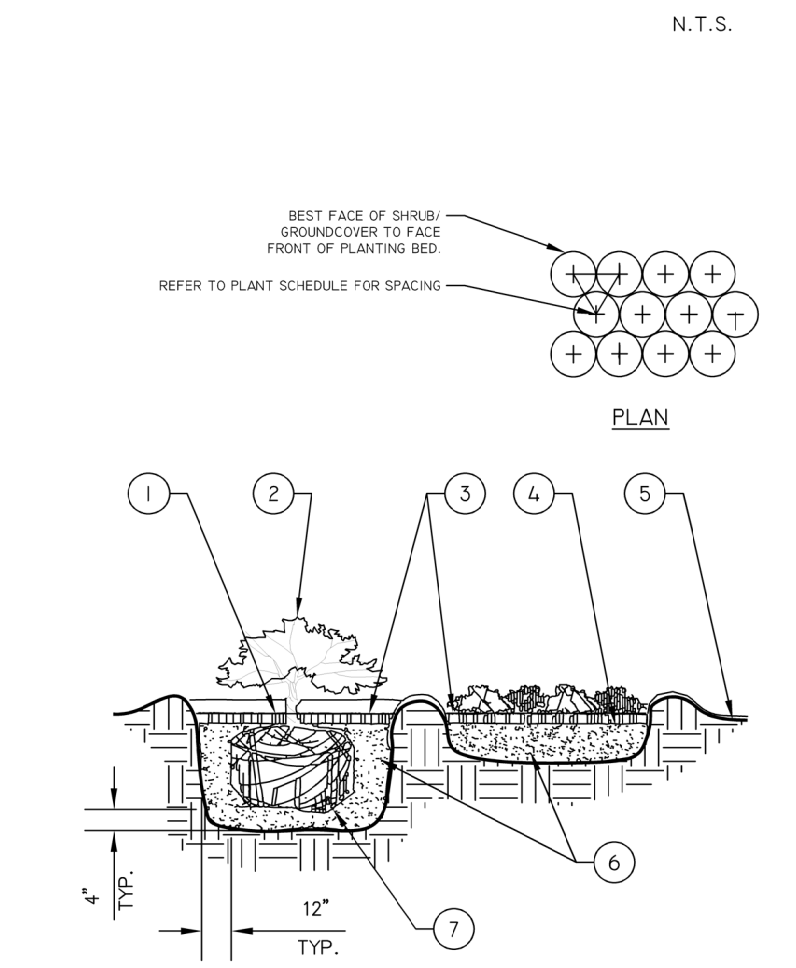


**LP-8**

# Planting / Landscape Details

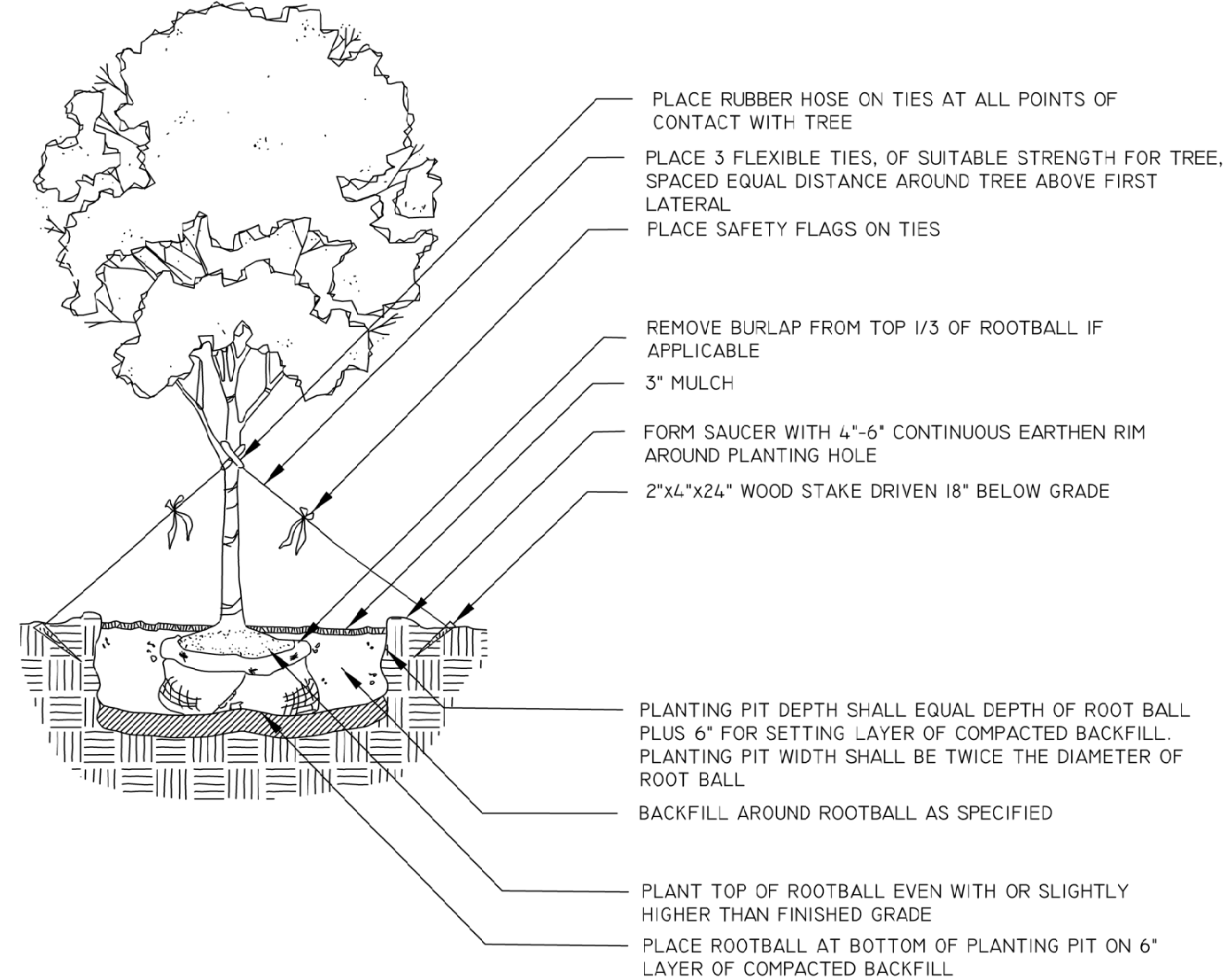


## PALM TREE PLANTING

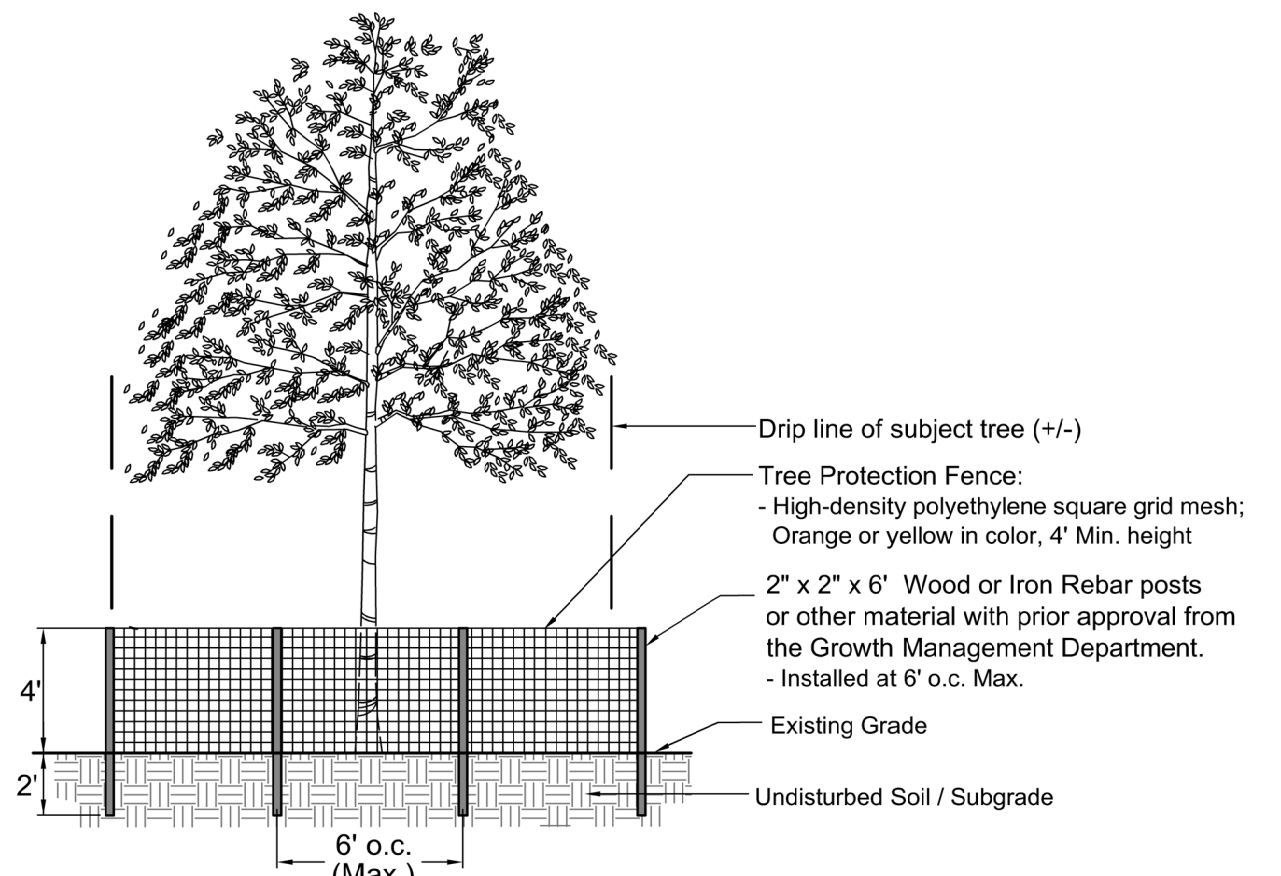


## SHRUB/GROUNDCOVER PLANTING

- TOP OF SHRUB ROOTBALLS TO BE PLANTED 1" - 2" HIGH WITH SOIL MOUNDING UP TO THE TOP OF ROOTBALL.
- WHEN USED IN MASSES- PRUNE ALL SHRUBS TO ACHIEVE A UNIFORM MASS/HEIGHT.
- 3" MULCH AS SPECIFIED.
- EXCAVATE ENTIRE BED SPECIFIED FOR GROUND COVER BED.
- 4" MINIMUM OF TOPSOIL TO BRING TO FINISHED GRADE (SEE GRADING PLAN).
- PREPARED PLANTING SOIL AS SPECIFIED. NOTE: WHEN GROUND-COVERS AND SHRUBS USED IN MASSES ENTIRE BED TO BE AMENDED WITH PLANTING SOIL MIX AS SPECIFIED IN THE PLANTING SPECIFICATION.
- SCARIFY ROOTBALL SIDES AND BOTTOM.



## TREE BARRICADE DETAIL



## SHRUB SCHEDULE

SYMBOL	CODE	QTY	BOTANICAL / COMMON NAME	SIZE	NATIVE
<b>CODE TREES</b>					
	BS2	3	Bismarckia nobilis 'Silver' / Silver Bismark Palm	7' - 8' CT., Root Pruned, Full Head	No
	BB	29	Bucida buceras 'Shady Lady' / Shady Lady Black Olive	2.5" Cal., 12' Ht. x 5' Spr. Min., Std., 5' ct.	No
	BB2	65	Bucida buceras 'Shady Lady' / Shady Lady Black Olive	3" Cal., 13-14' Ht. x 6' Spr., Std. 5' Ct.	No
	BA	18	Bulnesia arborea / Verawood	2.5" Cal., 12' Ht. x 5' Spr. Min., Std., 5' ct.	No
	CB	19	Calophyllum brasiliense / Brazilian Beautyleaf	2.5" Cal., 12' Ht. x 5' Spr. Min., Std., 5' ct.	No
	CB2	65	Calophyllum brasiliense / Brazilian Beautyleaf	3" Cal., 13-14' Ht. x 6' Spr., Std. 5' Ct.	No
	CD	25	Coccoloba diversifolia / Pigeon Plum	2.5" Cal., 12' Ht. x 5' Spr. Min., Std., 5' ct.	Yes
	CE	61	Conocarpus erectus / Green Buttonwood	2.5" Cal., 12' Ht. x 5' Spr. Min., Std., 5' ct.	Yes
	CE2	107	Conocarpus erectus / Green Buttonwood	3" Cal., 13-14' Ht. x 6' Spr., Std. 5' Ct.	Yes
	CS1	15	Conocarpus erectus 'Sericeus' / Silver Buttonwood	2.5" Cal., 12' Ht. x 5' Spr. Min., Multi-trunk, 5' ct.	Yes
	PD	28	Pinus eliotti 'Densa' / Slash Pine	2.5" Cal., 12' Ht. x 5' Spr. Min., Std., 5' ct.	Yes
	SS	171	Sabal palmetto / Cabbage Palm	30% @ 10' ct., 30% @ 14' ct., 40% @ 18' ct., Slick Trunks	Yes

SYMBOL	CODE	QTY	BOTANICAL / COMMON NAME	SIZE	NATIVE
<b>TREE MITIGATION</b>					
	AR	12	Acer rubrum 'Florida Flame' / Florida Flame Red Maple	2.5" Cal., 12' Ht. x 5' Spr. Min., Std., 5' ct.	Yes
	BA2	23	Bulnesia arborea / Verawood	2.5" Cal., 12' Ht. x 5' Spr. Min., Std., 5' ct.	No
	CD2	20	Coccoloba diversifolia / Pigeon Plum	2.5" Cal., 12' Ht. x 5' Spr. Min., Std., 5' ct.	Yes
	CE1	44	Conocarpus erectus / Green Buttonwood	2.5" Cal., 12' Ht. x 5' Spr. Min., Std., 5' ct.	Yes
	DR	12	Delonix regia / Royal Poinciana	4" Cal., 15-16' Ht. x 8' Spr., Std., 5' ct.	No
	LM	25	Lagerstroemia indica 'Muskogee' / Crape Myrtle	2.5" Cal., 12' Ht. x 5' Spr. Min., Multi-trunk, 5' ct.	No
	PD2	86	Pinus eliotti 'Densa' / Slash Pine	2.5" Cal., 12' Ht. x 5' Spr. Min., Std., 5' ct.	Yes
	QV1	30	Quercus virginiana / Live Oak	4" Cal., 16-18' Ht. x 6-8' Spr., 5-6' Ct.	Yes
	QV	20	Quercus virginiana / Live Oak	6" Cal., 18-20' Ht. x 8-12' Spr., Std., 5-6' ct.	Yes
	SS1	80	Sabal palmetto / Cabbage Palm	25% @ 12' ct, 16' ct., 19' ct., 21' ct., slick trunks	Yes
	TD3	32	Taxodium distichum / Bald Cypress	2.5" Cal., 12' Ht. x 5' Spr. Min., Std., 5' ct.	Yes

**\* Increased Size of Code Required Trees for Mitigation**

**\*\* Additional Trees Provided for Mitigation**

CODE	QTY	BOTANICAL / COMMON NAME	SIZE	NATIVE	SPACING
<b>ADDITIONAL SHRUBS &amp; GC</b>					
CI1	1,103	Chrysobalanus icaco 'Horizontal' / Horizontal Cocoplum	3 gal., 12" - 16" Ht. Full	Yes	30" o.c.
CR2	257	Chrysobalanus icaco 'Red Tip' / Red Tip Cocoplum	3 gal., 18" - 20" Ht., Full	Yes	30" o.c.
CG2	207	Clusia guttifera / Small Leaf Clusia	3 gal., 24"Ht. full	Yes	30" o.c.
CN	1,045	Clusia rosea 'Nana' / Dwarf Pitch Apple	3 gal., 12 - 14" HT. x 12 - 14" Spr., Full	Yes	24" o.c.
CS	301	Conocarpus erectus 'Sericeus' / Silver Buttonwood	3 gal., 20 - 24" Ht., Full	Yes	30" o.c.
HN2	1,637	Hamelia nodosa / Dwarf Firebush	3 gal., 14" - 16" Ht., Full	Yes	24" o.c.
ID	1,005	Ilex vomitoria 'Schillings Dwarf' / Dwarf Schillings Holly	3 gal., 10" - 12" Ht., Full	Yes	20" o.c.
MC	3,239	Muhlenbergia capillaris / Pink Muhly	1 gal., 14 - 16" Ht., Full	Yes	36" o.c.
SB	3,895	Spartina bakeri / Sand Cord Grass	1 gal., 14 - 16" Ht., Full	Yes	36" o.c.
TF	878	Tripsacum dactyloides / Fakahatchee Grass	1 gal., 18" - 24" Ht. Full	Yes	36" o.c.
TD1	2,001	Tripsacum floridanum / Dwarf Fakahatchee	1 gal., 14 - 16" Ht., Full	Yes	36" o.c.

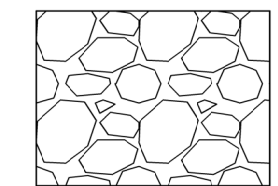
CODE	REQ.	SHRUBS	SIZE	NATIVE	SPACING
CR	400	Chrysobalanus icaco 'Red Tip' / Red Tip Cocoplum	3 gal., 24" Ht. Min.	Yes	30" o.c.
CG1	530	Clusia guttifera / Small Leaf Clusia	3 gal., 24" Ht. Min.	Yes	30" o.c.
CE3	574	Conocarpus erectus / Green Buttonwood	3 gal., 24" Ht. Min.	Yes	30" o.c.
CS2	210	Conocarpus erectus 'Sericeus' / Silver Buttonwood	3 gal., 24" Ht. Min.	Yes	30" o.c.
PN	654	Psychotria nervosa / Wild Coffee	3 gal., 24"Ht., full	Yes	36" o.c.

**\* Additional Native Understory Plantings for Inch Credit:**

10,013 - 1 Gallon Native Plants (1" per 24 plants)	417 inches
5,555 - 3 Gallon Native Plants (1" per 12 plants)	462 inches
<b>Total inches Provided</b>	<b>1,890 inches</b>

## Landscape Notes

- Plant materials shall meet or exceed the standards for Florida No. 1 as set out in the most current edition of "Grades and Standards for Nursery Plants Part 1 and Part 2," State of Florida, Department of Agriculture, Tallahassee.
- All trees required by this article (excluding palms that are exempt from the grades and standards) shall have a Florida No. 1 or better "Grades and Standards" certification tag attached at time of delivery through final inspection.
- Grass sod shall be clean and free of weeds, pests and diseases.
- Planting soil for all landscaped areas shall consist of existing soil mixed with fifty (50) per cent recycled top soil. Such planting soil shall be generally indigenous to the locale. Free of debris, rocks, clay, stones, plants or other foreign materials. The planting soil shall extend to an appropriate depth so as to eliminate any hindrance to planting operations or detriment to good plant growth. Compliance with these soil requirements shall be verified as part of the final inspection.
- Landscaped areas shall be covered in their entirety with shrubs, ground cover, turf, or three (3) inches of bulk organic mulch or other suitable material which permits percolation and is approved by the department, and shall additionally contain a screen of landscaping which shall be installed and maintained so as to form a thirty-six-inch or higher continuous, unbroken, solid, visual screen within a maximum of one year after the landscaping takes place, except in clear vision areas required in section 22-53.
- Do not place any soil or mulch over the root ball. If stakes or guide wires are used to support a tree, the wire must be covered with protective material where it is in contact with the tree and the stakes or guide wires must be removed after one year.
- All landscaping must be protected from vehicular and pedestrian traffic by the installation of curbing, wheel stops or other protective devices along the perimeter of any landscaping which adjoins vehicular use areas or sidewalks. These protected devices shall have a minimum height of six (6) inches above grade.
- No parking, display of vehicles or outside storage or display of merchandise is permitted in or over any required landscape area, nor are vehicles permitted to overhang any required landscaped area.
- To minimize traffic hazards at street or driveway intersections, all landscaping installations must provide unobstructed views.
- Any irrigation system placed on city right-of-way will be the responsibility of the property owner who shall relocate, replace or repair the system as appropriate in the event it is damaged due to permitted construction in the right-of-way.
- Prior to issuance of certificate of occupancy, final landscape installation shall be certified as complete and in conformance to the approved landscape plan by submission of a certification letter by a landscape architect.
- Property owners shall maintain all required landscaping so that it continues to present a healthy, neat and orderly appearance free of refuse and debris.
- Vegetation required shall be replaced with equivalent vegetation if it is not living. All trees for which credit is awarded and which subsequently die shall be replaced by the same number of living trees.
- Maintenance shall include sufficient weeding, watering, fertilizing, pruning, mowing, edging, mulching and other horticultural practices so as to assure that the landscaping continues to maintain a healthy, neat and orderly appearance.
- No person shall, directly or indirectly, cut down, substantially alter, destroy, remove, relocate, damage or authorize any such act involving a protected tree situated on land within the city, without first obtaining a tree removal permit from the nearest overhead power line.
- Removal, trimming, pruning or alteration of any tree or vegetation in an existing utility easement or public right-of-way, provided such work is done by or under the control of the operating utility company and said company has received all necessary licenses or permits to provide utility service within the easement.
- This plan has been designed to meet the tree planting requirements contained within the FPL document entitled "Plant the Right Tree in the Right Place". For existing or proposed utilities, no tree shall be planted where it could, at a mature height conflict with overhead power lines.
  - Large trees (height at maturity of more than 30') shall be planted no closer than a horizontal distance of 30' from the nearest overhead power line.
  - Medium height trees (height at maturity between 20' and 30') shall be offset at least 20' and small trees (height at maturity of less than 20') require no offset.
  - No tree shrubs, hedges or vines shall be planted within 5' of an existing or proposed utility pole, guy wire or pad-mounted transformer.
  - Palms should be planted at a distance equal to or greater than the average frond length plus two (2) feet from power lines.
- Tree locations are conceptual. Locations are subject to change at the time of final construction plans based on utility and driveway locations.
- Soc areas, callouts and schedule to be provided at the time of final landscape construction plans.



**Riprap Rock Bed Typ.**  
(See Locations shown on Plan)

Type: 4" - 6" Riprap Rock  
Total Quantity: 16,518 sf  
Depth: 8" - 10"  
Note: Contractor to provide weed mat



3500 SW Corporate Parkway, Suite 203  
Palm City, Florida 34990  
T 772.678.7200  
www.hjadesignstudio.com  
LA 0000905

Florida

**Pulte Cornerstone**  
City of Fort Pierce  
Landscape Specifications

Copyright  
The following drawings are instruments of service to the Landscape Architect. They are not products of design. All ideas, designs, arrangements and plans indicated or represented by this drawing are owned by and the property of the designer, and were created, evolved, and developed for use on and in connection with the specified project. None of such ideas, designs, arrangements, or plans shall be used by or disclosed to any person, firm, or corporation for any purpose whatsoever without the written permission of the designer.

Job No. 2024-31  
Drawn By TT  
Checked By MH  
Approved By MH  
Submittal Dates 2-14-2025

Revision Dates

LP-9