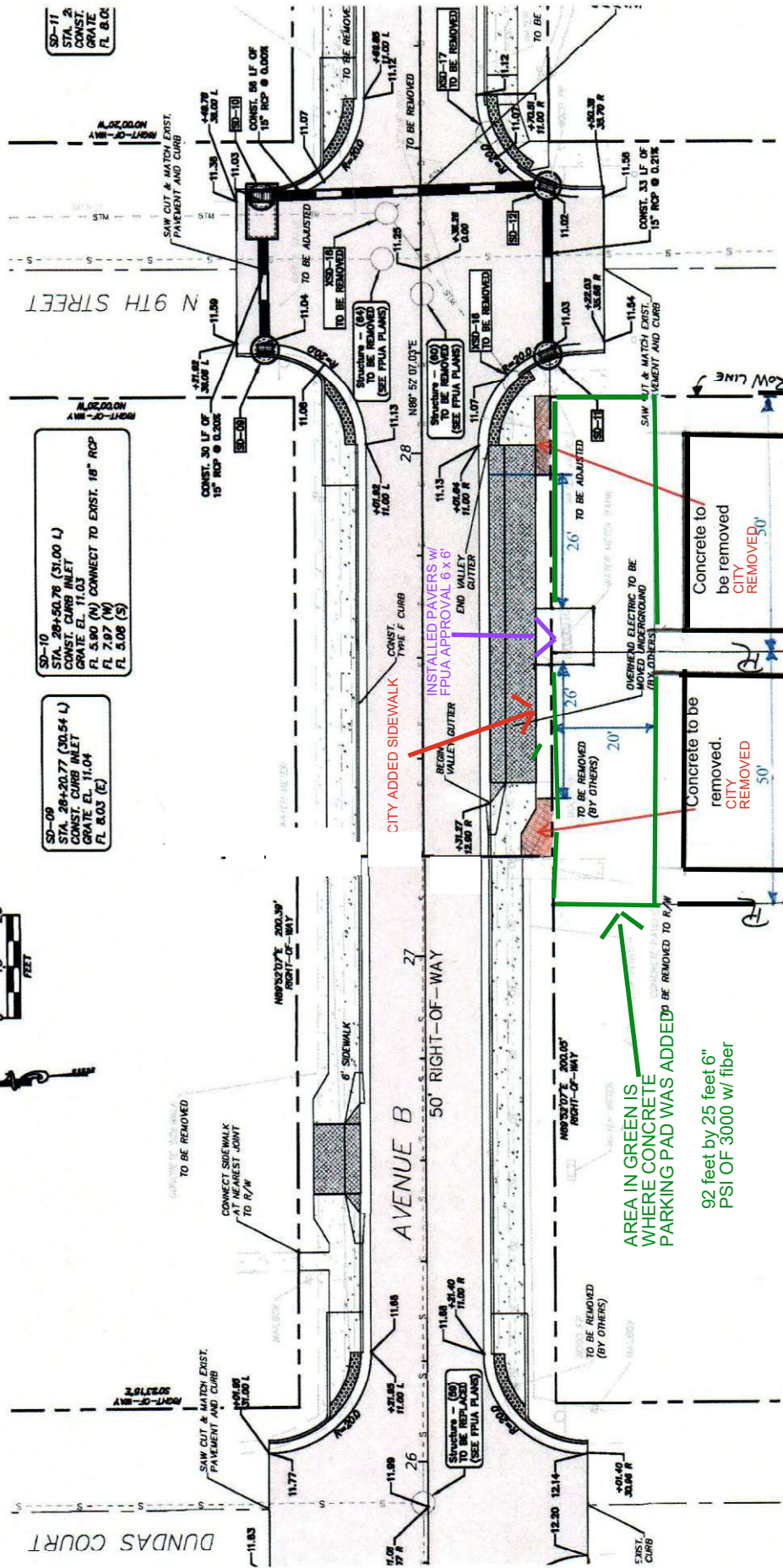
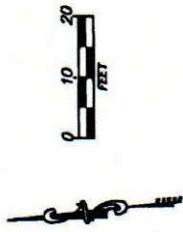


203 N. 9th St
Fort Pierce, FL 34950



SD-09
STA. 26+20.77 (30.54 L)
CONST. CURB INLET
GRATE EL. 11.04
FL 8.03 (E)

SD-10
STA. 26+50.78 (31.00 L)
CONST. CURB INLET
GRATE EL. 11.03
FL 5.80 (N) CONNECT TO EXIST. 18" RCP
FL 7.87 (W)
FL 5.08 (S)

SD-11
STA. 2
CONST.
GRATE
FL 8.01

AREA IN GREEN IS
WHERE CONCRETE
PARKING PAD WAS ADDED
92 feet by 25 feet 6"
PSI OF 3000 w/ fiber

Concrete to be removed.
CITY REMOVED 50'

Concrete to be removed.
CITY REMOVED 50'

UTILITIES NOTE:
REFER TO UTILITY PLANS FOR THE LOCATION
OF GAS AND POURABLE WATER FACILITIES.

ASPHALT PAVEMENT

8" CONCRETE DOWNGRADE

4" CONCRETE SIDEWALK

EXISTING SIDEWALK

209 N 9th St
Fort Pierce, FL 34950

903 AVENUE B
FORT PIERCE, FL 34950

Building houses four,
one bedroom apt.

Building houses four,
one bedroom apt.