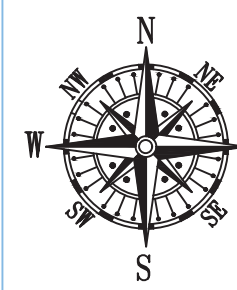


Aerial Photograph
May not show latest improvements. Not-to-scale.



Vicinity Map Not-to-Scale

Table with 7 rows and 2 columns: ITEM NO. and REQUIREMENTS. Contains detailed survey specifications and notes regarding monumentation, easements, and boundary lines.

Survey Related Information

LEGAL DESCRIPTION: COMMENCE AT THE NORTHWEST CORNER OR THE SOUTH 1/2 OF SAID NORTHWEST 1/4 OF SECTION 30, THENCE RUN NORTH 89°02'18" EAST, ALONG THE NORTH LINE OF SAID SOUTH 1/2, A DISTANCE OF 2024.51 FEET, TO AN INTERSECTION WITH THE WEST LINE OF SAID NORTHEAST 1/4 OF THE SOUTHEAST 1/4 OF THE NORTHWEST 1/4 OF SECTION 30, ALSO BEING THE NORTHERLY EXTENSION OF THE EAST LINE OF WESTGLEN, A SUBDIVISION AS RECORDED IN PLAT BOOK 14, PAGE 51 OF THE PUBLIC RECORDS OF ST. LUCIE COUNTY, FLORIDA, THENCE SOUTH 00°34'45" WEST, ALONG SAID WEST LINE OF THE NORTHEAST 1/4 OF THE SOUTHEAST 1/4 OF THE NORTHWEST 1/4, A DISTANCE OF 21.73 FEET, TO THE SOUTHERLY RIGHT OF WAY LINE OF EDWARDS ROAD, AS LAID OUT AND NOW IS USE FOR THE POINT OF BEGINNING, THENCE RUN NORTH 88°43'09" EAST, ALONG SAID SOUTHERLY RIGHT OF WAY LINE A DISTANCE OF 60.02 FEET TO A POINT, THENCE SOUTH 00°19'48" WEST ALONG A LINE 50 FEET EAST OF AND PARALLEL TO THE EAST LINE OF TRACT "A" AND LOT 7 OF WESTGLEN SUBDIVISION, PLAT BOOK 14, PAGE 51, ST. LUCIE COUNTY, FLORIDA, A DISTANCE OF 384.11 FEET, THENCE NORTH 89°30'48" EAST ALONG A LINE 60 FEET NORTH OF AND PARALLEL TO THE NORTH LINE OF LOT 8 OF SAID WESTGLEN SUBDIVISION, A DISTANCE OF 259.73 FEET, THENCE SOUTH 00°21'56" WEST ALONG A LINE 60 FEET EAST OF AND PARALLEL TO THE EAST LINE OF SAID WESTGLEN SUBDIVISION, A DISTANCE OF 247.76 FEET, THENCE RUN SOUTH 88°53'19" WEST A DISTANCE OF 60.02 FEET TO AN INTERSECTION WITH THE EAST LINE OF SAID WESTGLEN SUBDIVISION, THENCE RUN NORTH 00°37'24" EAST ALONG SAID EAST LINE OF WESTGLEN SUBDIVISION, A DISTANCE OF 188.33 FEET, TO THE NORTHERLY LINE OF LOT 8 OF SAID WESTGLEN SUBDIVISION, THENCE RUN SOUTH 89°22'14" WEST ALONG SAID NORTHERLY LINE OF SAID WESTGLEN SUBDIVISION, A DISTANCE OF 259.69 FEET, TO A POINT OF INTERSECTION WITH THE SAID WEST LINE OF THE NORTHEAST 1/4 OF THE SOUTHEAST 1/4 OF THE NORTHWEST 1/4, ALSO BEING THE EASTERLY LINE OF SAID WESTGLEN SUBDIVISION, THENCE RUN NORTH 00°34'45" WEST ALONG SAID WEST LINE 453.29 FEET TO A POINT OF INTERSECTION WITH SAID SOUTHERLY RIGHT OF WAY LINE OF EDWARDS ROAD AND THE POINT OF BEGINNING. AND THE SOUTHEAST 1/4 OF THE SOUTHEAST 1/4 OF THE NORTHWEST 1/4 AND THE NORTH 1/2 OF THE NORTHEAST 1/4 OF THE NORTHWEST 1/4 OF THE SOUTHWEST 1/4 OF SECTION 30, TOWNSHIP 35 SOUTH, RANGE 40 EAST, EXCEPTING THEREFROM CANAL RIGHT OF WAY, SAID PROPERTY LYING AND BEING IN ST. LUCIE COUNTY, FLORIDA. AND THE EAST 1/4 OF THE SOUTHWEST 1/4 OF THE SOUTHEAST 1/4 OF THE NORTHWEST 1/4, LESS WEST GLEN AS IN PLAT BOOK 14, PAGE 51, PUBLIC RECORDS OF ST. LUCIE COUNTY, FLORIDA, ALL LYING AND BEING IN SECTION 30, TOWNSHIP 35 SOUTH, RANGE 40 EAST.

THIS SURVEY DESCRIBES AND DEPICTS THE SAME LAND AS DESCRIBED IN THE TITLE COMMITMENT AS REFERENCED ABOVE.

Platted Easements, Notable or Adverse Conditions (unplatted easements also listed if provided by client): IF APPLICABLE, RECIPIENTS OF THIS SURVEY SHOULD REVIEW THE POSITION OF ANY FENCE LINES SHOWN HEREON AND THEIR RELATIONSHIP TO THE BOUNDARY LINE

-NO NOTABLE CONDITIONS FOUND.

INVOICE NUMBER 187981-SE
DATE OF FIELD WORK: 11/16/2023

COMMUNITY NUMBER : 120286

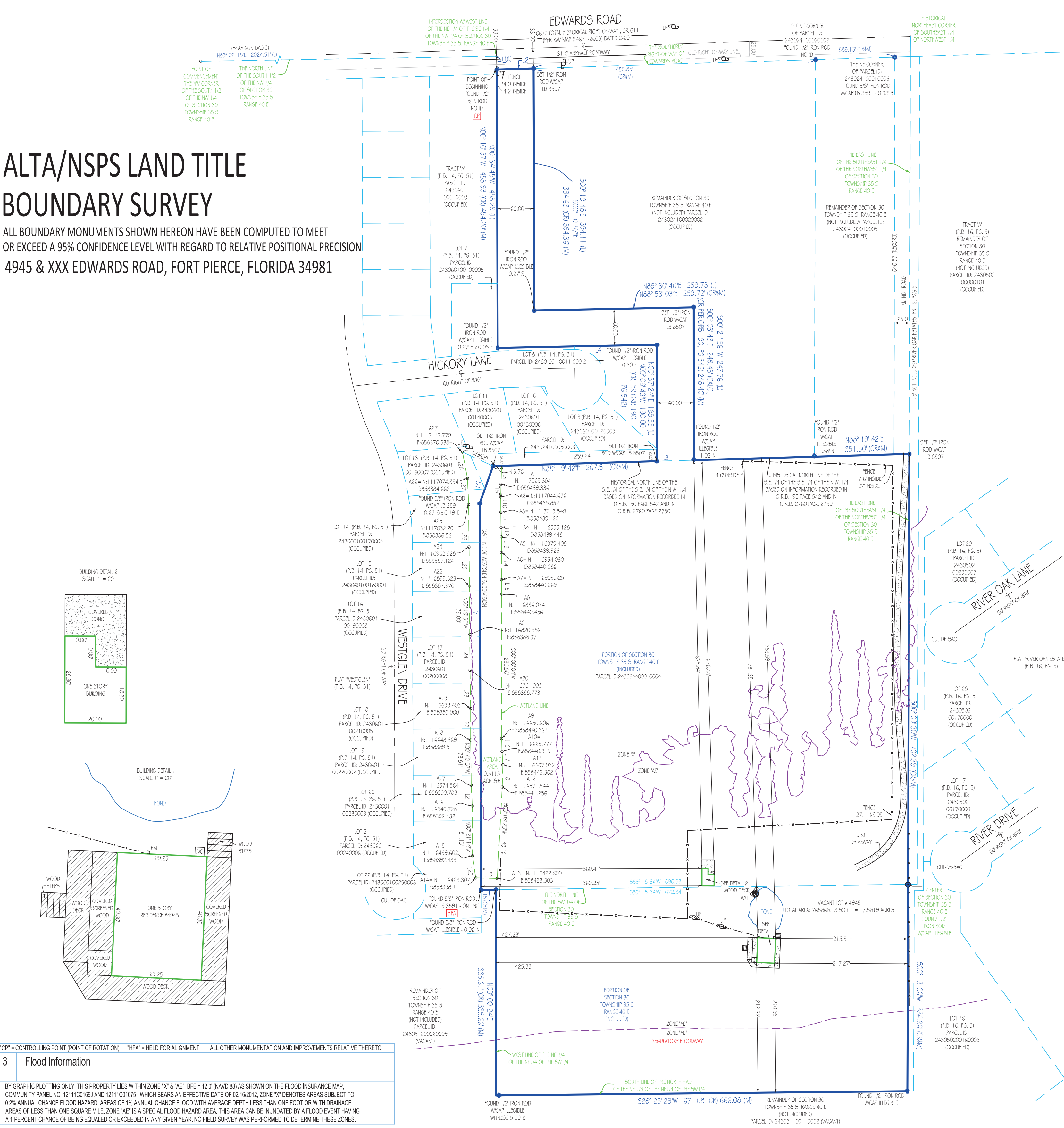


Table with 3 columns: SYMBOL, DESCRIPTION, and OTHER MONUMENTATION AND IMPROVEMENTS RELATIVE THERETO. Includes symbols for Controlling Point, Held for Alignment, Flood Information, and Cemetery Note.

BY GRAPHIC PLOTTING ONLY, THIS SURVEY LIES WITHIN ZONE "X" & "AE", BFE = 12'0" (NAVD 88) AS SHOWN ON THE FLOOD INSURANCE MAP, COMMUNITY PANEL NO. 12110189I AND 12110187IS, WHICH BEARS AN EFFECTIVE DATE OF 02/16/2012. ZONE "X" DENOTES AREAS SUBJECT TO 0.2% ANNUAL CHANCE FLOOD HAZARD, AREAS OF 1% ANNUAL CHANCE FLOOD WITH AVERAGE DEPTHS LESS THAN ONE FOOT OR WITH DRAINAGE AREAS OF LESS THAN ONE SQUARE MILE. ZONE "AE" IS A SPECIAL FLOOD HAZARD AREA, THIS AREA CAN BE INUNDATED BY A FLOOD EVENT HAVING A 1-PERCENT CHANCE OF BEING EQUALLED OR EXCEEDED IN ANY GIVEN YEAR, NO FIELD SURVEY WAS PERFORMED TO DETERMINE THESE ZONES.

7 Surveyors Certificate

CERTIFIED TO ORANGE GARDENS DEVELOPMENT INC

This is to certify that this map or plat and the survey on which it is based were made in accordance with the 2021 Minimum Standard Detail Requirements for ALTA and NSPS Land Title Surveys, jointly established and adopted by ALTA and NSPS, and includes items 1., 3., 4., 6, (a), (f), (g), (h), (i), (j), (k), (l), (m), (n), (o), (p), (q), (r), (s), (t), (u), (v), (w), (x), (y), (z), (aa), (ab), (ac), (ad), (ae), (af), (ag), (ah), (ai), (aj), (ak), (al), (am), (an), (ao), (ap), (aq), (ar), (as), (at), (au), (av), (aw), (ax), (ay), (az), (ba), (bb), (bc), (bd), (be), (bf), (bg), (bh), (bi), (bj), (bk), (bl), (bm), (bn), (bo), (bp), (bq), (br), (bs), (bt), (bu), (bv), (bw), (bx), (by), (bz), (ca), (cb), (cc), (cd), (ce), (cf), (cg), (ch), (ci), (cj), (ck), (cl), (cm), (cn), (co), (cp), (cq), (cr), (cs), (ct), (cu), (cv), (cw), (cx), (cy), (cz), (da), (db), (dc), (dd), (de), (df), (dg), (dh), (di), (dj), (dk), (dl), (dm), (dn), (do), (dp), (dq), (dr), (ds), (dt), (du), (dv), (dw), (dx), (dy), (dz), (ea), (eb), (ec), (ed), (ee), (ef), (eg), (eh), (ei), (ej), (ek), (el), (em), (en), (eo), (ep), (eq), (er), (es), (et), (eu), (ev), (ew), (ex), (ey), (ez), (fa), (fb), (fc), (fd), (fe), (ff), (fg), (fh), (fi), (fj), (fk), (fl), (fm), (fn), (fo), (fp), (fq), (fr), (fs), (ft), (fu), (fv), (fw), (fx), (fy), (fz), (ga), (gb), (gc), (gd), (ge), (gf), (gg), (gh), (gi), (gj), (gk), (gl), (gm), (gn), (go), (gp), (gq), (gr), (gs), (gt), (gu), (gv), (gw), (gx), (gy), (gz), (ha), (hb), (hc), (hd), (he), (hf), (hg), (hh), (hi), (hj), (hk), (hl), (hm), (hn), (ho), (hp), (hq), (hr), (hs), (ht), (hu), (hv), (hw), (hx), (hy), (hz), (ia), (ib), (ic), (id), (ie), (if), (ig), (ih), (ii), (ij), (ik), (il), (im), (in), (io), (ip), (iq), (ir), (is), (it), (iu), (iv), (iw), (ix), (iy), (iz), (ja), (jb), (jc), (jd), (je), (jf), (jg), (jh), (ji), (jj), (jk), (jl), (jm), (jn), (jo), (jp), (jq), (jr), (js), (jt), (ju), (jv), (jw), (jx), (jy), (jz), (ka), (kb), (kc), (kd), (ke), (kf), (kg), (kh), (ki), (kj), (kk), (kl), (km), (kn), (ko), (kp), (kq), (kr), (ks), (kt), (ku), (kv), (kw), (kx), (ky), (kz), (la), (lb), (lc), (ld), (le), (lf), (lg), (lh), (li), (lj), (lk), (ll), (lm), (ln), (lo), (lp), (lq), (lr), (ls), (lt), (lu), (lv), (lw), (lx), (ly), (lz), (ma), (mb), (mc), (md), (me), (mf), (mg), (mh), (mi), (mj), (mk), (ml), (mm), (mn), (mo), (mp), (mq), (mr), (ms), (mt), (mu), (mv), (mw), (mx), (my), (mz), (na), (nb), (nc), (nd), (ne), (nf), (ng), (nh), (ni), (nj), (nk), (nl), (nm), (nn), (no), (np), (nq), (nr), (ns), (nt), (nu), (nv), (nw), (nx), (ny), (nz), (oa), (ob), (oc), (od), (oe), (of), (og), (oh), (oi), (oj), (ok), (ol), (om), (on), (oo), (op), (oq), (or), (os), (ot), (ou), (ov), (ow), (ox), (oy), (oz), (pa), (pb), (pc), (pd), (pe), (pf), (pg), (ph), (pi), (pj), (pk), (pl), (pm), (pn), (po), (pp), (pq), (pr), (ps), (pt), (pu), (pv), (pw), (px), (py), (pz), (qa), (qb), (qc), (qd), (qe), (qf), (qg), (qh), (qi), (qj), (qk), (ql), (qm), (qn), (qo), (qp), (qq), (qr), (qs), (qt), (qu), (qv), (qw), (qx), (qy), (qz), (ra), (rb), (rc), (rd), (re), (rf), (rg), (rh), (ri), (rj), (rk), (rl), (rm), (rn), (ro), (rp), (rq), (rr), (rs), (rt), (ru), (rv), (rw), (rx), (ry), (rz), (sa), (sb), (sc), (sd), (se), (sf), (sg), (sh), (si), (sj), (sk), (sl), (sm), (sn), (so), (sp), (sq), (sr), (ss), (st), (su), (sv), (sw), (sx), (sy), (sz), (ta), (tb), (tc), (td), (te), (tf), (tg), (th), (ti), (tj), (tk), (tl), (tm), (tn), (to), (tp), (tq), (tr), (ts), (tt), (tu), (tv), (tw), (tx), (ty), (tz), (ua), (ub), (uc), (ud), (ue), (uf), (ug), (uh), (ui), (uj), (uk), (ul), (um), (un), (uo), (up), (uq), (ur), (us), (ut), (uu), (uv), (uw), (ux), (uy), (uz), (va), (vb), (vc), (vd), (ve), (vf), (vg), (vh), (vi), (vj), (vk), (vl), (vm), (vn), (vo), (vp), (vq), (vr), (vs), (vt), (vu), (vv), (vw), (vx), (vy), (vz), (wa), (wb), (wc), (wd), (we), (wf), (wg), (wh), (wi), (wj), (wk), (wl), (wm), (wn), (wo), (wp), (wq), (wr), (ws), (wt), (wu), (wv), (ww), (wx), (wy), (wz), (xa), (xb), (xc), (xd), (xe), (xf), (xg), (xh), (xi), (xj), (xk), (xl), (xm), (xn), (xo), (xp), (xq), (xr), (xs), (xt), (xu), (xv), (xw), (xx), (xy), (xz), (ya), (yb), (yc), (yd), (ye), (yf), (yg), (yh), (yi), (yj), (yk), (yl), (ym), (yn), (yo), (yp), (yq), (yr), (ys), (yt), (yu), (yv), (yw), (yx), (yz), (za), (zb), (zc), (zd), (ze), (zf), (zg), (zh), (zi), (zj), (zk), (zl), (zm), (zn), (zo), (zp), (zq), (zr), (zs), (zt), (zu), (zv), (zw), (zx), (zy), (zz)

4 Land Area

76807.41± SQUARE FEET 17.589± ACRES

6Dig Surveyor's Notes

- 1. THIS SURVEY IS BASED UPON RECORD INFORMATION PROVIDED BY CLIENT. NO SPECIFIC SEARCH OF THE PUBLIC RECORD HAS BEEN MADE BY THIS OFFICE UNLESS OTHERWISE NOTED. PURPOSES. RECIPIENTS MUST CONTACT OUR OFFICE FOR APPROVAL PRIOR TO SUCH USE. LANDTEC SURVEYING ASSUMES NO RESPONSIBILITY FOR ERRORS RESULTING FROM FAILURE TO ADHERE TO THIS CLAUSE.
2. ANY FENCES SHOWN HEREON ARE ILLUSTRATIVE OF THEIR GENERAL POSITION ONLY. FENCES ARE SHOWN AS TO GENERAL COVERAGE OF FENCE. THIS OFFICE WILL NOT BE RESPONSIBLE FOR DAMAGES RESULTING FROM THE REMOVAL OF, OR CHANGES MADE TO, ANY FENCES WE HAVE PROVIDED A SURVEY SPECIFICALLY LOCATING SAID FENCES FOR SUCH PURPOSES. DETERMINATION OF FENCE POSITIONS SHOULD BE BASED SOLELY ON THEIR PHYSICAL RELATIONSHIP TO THE MONUMENTED BOUNDARY LINES.
3. GRAPHIC REPRESENTATIONS MAY HAVE BEEN EXAGGERATED TO MORE CLEARLY ILLUSTRATE MEASURED RELATIONSHIPS - DIMENSIONS SHOWN OVER SCALED POSITIONS.
4. UNDERGROUND IMPROVEMENTS HAVE NOT BEEN LOCATED EXCEPT AS SPECIFICALLY SHOWN.
5. ELEVATIONS ARE BASED UPON NATIONAL GEODETIC VERTICAL DATUM (NAD 83). 1029 OR NORTH AMERICAN VERTICAL DATUM (NAVD 11). 988, AS SHOWN HEREON.
6. ALL BOUNDARY AND CONTROL DIMENSIONS SHOWN ARE FIELD MEASURED AND CORRESPOND TO RECORD INFORMATION UNLESS SPECIFICALLY NOTED OTHERWISE.
7. ANY CORNERS SHOWN AS "SET" HAVE EITHER BEEN SET ON THE DATE OF FIELD WORK, OR WILL BE SET WITHIN 2 BUSINESS WEEKS OF SAID DATE AND ARE IDENTIFIED WITH A CAP MARKED LB (LICENSED BUSINESS) 8697.

5F Cemetery Note

THERE ARE NO VISIBLE EVIDENCE OF CEMETERIES ON THE SUBJECT PROPERTY.

5Biii Access to Property

THE SUBJECT PROPERTY HAS DIRECT AND PHYSICAL ACCESS TO EDWARDS ROAD A DEDICATED PUBLIC STREET OR HIGHWAY AS SHOWN HEREON.

6Biv Bearing Basis

NORTH LINE OF THE SOUTH 1/2 OF THE NW 1/4 OF SECTION 30, TOWNSHIP 35 SOUTH, RANGE 40 EAST RECORDED AS N 89°02'18" E AS REFERENCED IN SUBJECT PROPERTY LEGAL DESCRIPTION. ALL BEARINGS SHOWN HEREON REFERENCED THERETO.

6Bviii Contiguity Statement

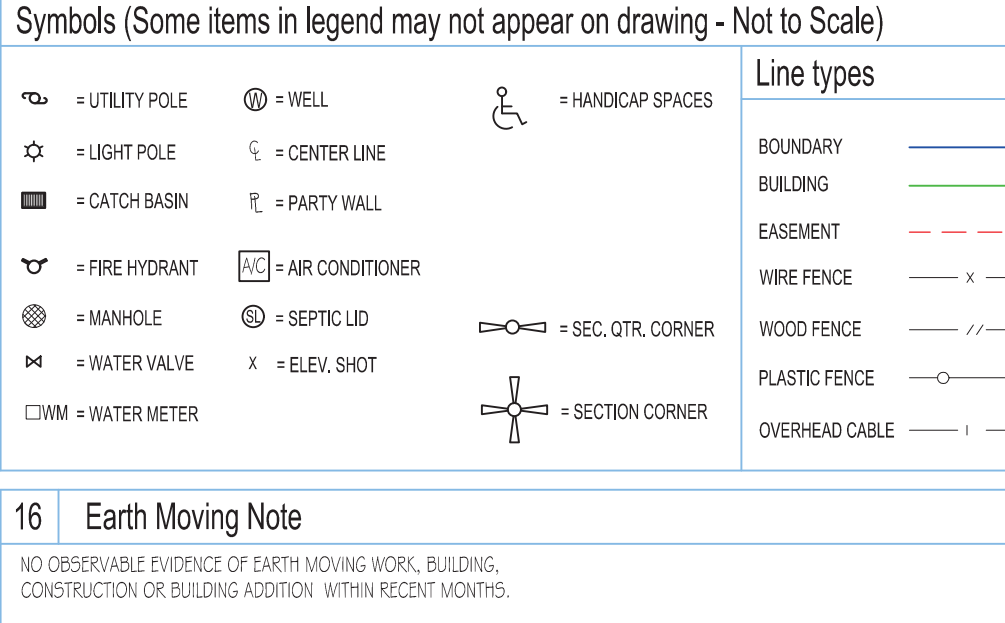
THE PARCEL CONTAINED IN THE LEGAL DESCRIPTION ARE CONTIGUOUS WITHOUT ANY GAPS, GORES OR OVERLAPS UNLESS SHOWN HEREON.

6Cviii Platted Setback or Recorded Building Restriction Lines

NONE PROVIDED TO THIS SURVEYOR.

16 Earth Moving Note

NO OBSERVABLE EVIDENCE OF EARTH MOVING WORK, BUILDING, CONSTRUCTION OR BUILDING ADDITION, WITHIN RECENT MONTHS.



Abbreviation Legend (Some items in legend may not appear on drawing)

Table with 4 columns: A OR AL + ARC LENGTH, CO = CENTRAL ANGLE, CATV = CABLE TV RISER, CH = CALCULATED FROM FIELD, CH = CHORD DISTANCE, CONC. = CONCRETE, DR = DRAINAGE EASEMENT, DBH = DIAMETER AT BREAST HEIGHT, EL OR ELEV = ELEVATION, EM = ELECTRIC METER, F.F.E. = FINISHED FLOOR ELEV., FR = FOUND IRON ROD, FN = FOUND NAIL, FN = FOUND, G.F.F. = GARAGE FINISHED FLOOR, L = LEGAL DESCRIPTION, M = MEASURED, OC = OVERHEAD CABLE, P = PLAT, PC = POINT OF CURVATURE, EM = ELECTRIC METER, F.F.E. = FINISHED FLOOR ELEV., PH = POOL HEATER, PI = POINT OF INTERSECTION, PK = PARKER KAEHLON, POB = POINT OF BEGINNING, POC = POINT OF COMMENCEMENT, PP = POOL PUMP, PW = WATER METER, WM = WATER VALVE, BFE = BASE FLOOD ELEVATION, R = RADIUS, RING = RANGE, ROW = RIGHT OF WAY, SEC = SECTION, TR = TELEPHONE RISER, TWP = TOWNSHIP, UE = UTILITY EASEMENT, UP = UTILITY POLE, WM = WATER METER, WV = WATER VALVE, QTR = QUARTER

Table with columns: Job Number, Field, Date, Revision, Tech. Includes Job Number: 216827-SE, Date: 08/26/2024, Revision: TC, Tech: L.B.

Printing Instructions

WHEN PRINTING THIS PDF IN ADOBE, SELECT 'ACTUAL SIZE' TO ENSURE CORRECT SCALING. DO NOT USE 'FIT'.

This survey has been issued by the following Landtec Surveying office: 840 US Hwy 1, Suite 330 North Palm Beach, Florida 33408 Office: (561) 210-9344 www.LandtecSurvey.com Email: Construction@landtecsurvey.com



Table with columns: BEARING, DISTANCE, LINE TABLE. Includes line table with bearings and distances for various points and lines.

Table with columns: BEARING, DISTANCE. Includes additional line table data.

WELL TO HOUSE: 71.82' WELL TO S PROPERTY LINE: 324.6' WELL TO E PROPERTY LINE: 248.3'

SURVEY NOTE: INFORMATION FOR TREES SHOWING HEREON IS NOT FIELD VERIFIED. EQUIPMENT USED: SPECTRA 65 AND RANGE 7 PRO DATE: 07/19/2024