

DUTCH BROS

The logo for Dutch Bros Coffee features the words "DUTCH BROS" in a large, white, bold, sans-serif font. Below this text is a horizontal bar composed of three distinct color bands: a top yellow band, a middle red band, and a bottom blue band. To the right of this bar, the word "Coffee" is written in a stylized, cursive script font, colored yellow with a red outline.

FL2701 - 2050 S US Hwy 1, Fort Pierce, FL 34950



CONTACT INFORMATION

Cummings:

Marilyn Brennan: VP of National Accounts
 marilyn.brennan@cummingsigns.com
 615-872-0309

Austyn Travis: Director of Program Management
 austyn.travis@cummingsigns.com
 615-872-0213

Jessica Mappa: Senior Project Manager
 jessica.mappa@cummingsigns.com
 615-622-0509

Dutch Bros:

Harry Raft: VP of Design and Construction
 harry.raft@dutchbros.com

Mark Baker: Design Manager
 mark.baker@dutchbros.com

Jeffrey Bennett: Director of Construction - South
 jeffrey.bennett@dutchbros.com

Lisa Smola-Hollo: Director of Construction - North
 lisa.smola-hollo@dutchbros.com

Wally Tirheimer: Director of Construction - West
 wally.tirheimer@dutchbros.com

3M Colors



THIS IS AN ORIGINAL UNPUBLISHED DRAWING CREATED FOR YOUR PERSONAL USE IN CONNECTION WITH A PROJECT PLANNED FOR YOU BY CUMMINGS. IT IS NOT TO BE SHOWN OUTSIDE YOUR ORGANIZATION NOR USED, REPRODUCED, COPIED OR EXHIBITED IN ANY FASHION UNLESS AUTHORIZED IN WRITING BY AN OFFICER OF CUMMINGS.

CUSTOMER APPROVAL: _____
 DATE: _____

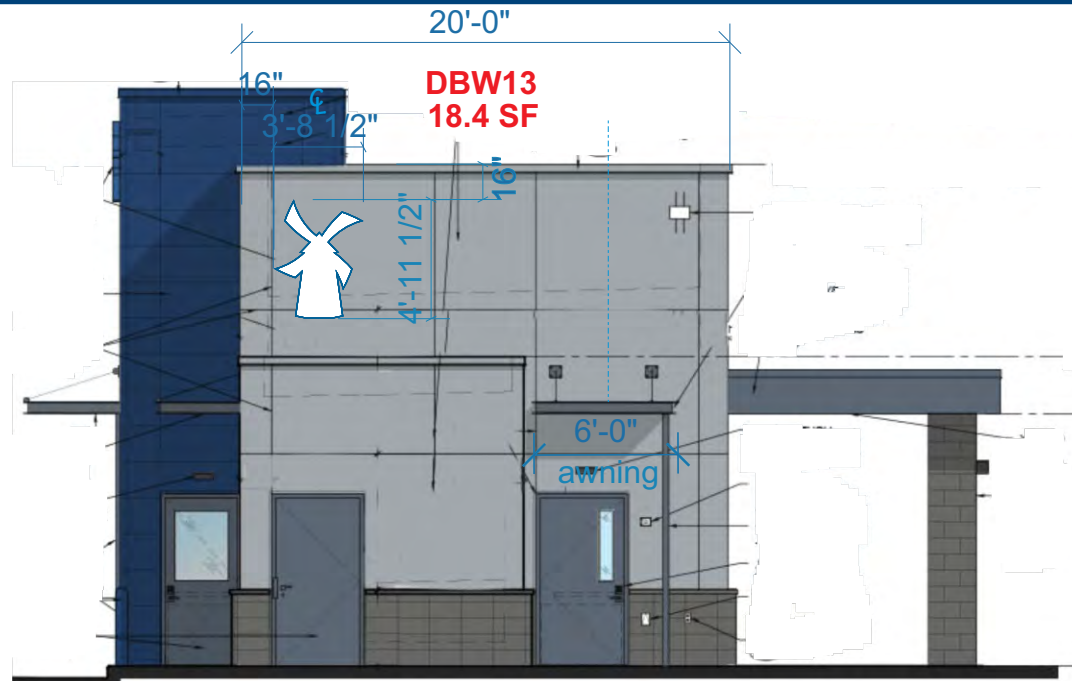
Rev. #	DATE	BY
Rev. #1	11/22/24	aaaj
Rev. #2	12/17/24	aaaj
Rev. #3		

Rev. #	DATE	BY
Rev. #4		
Rev. #5		
Rev. #6		

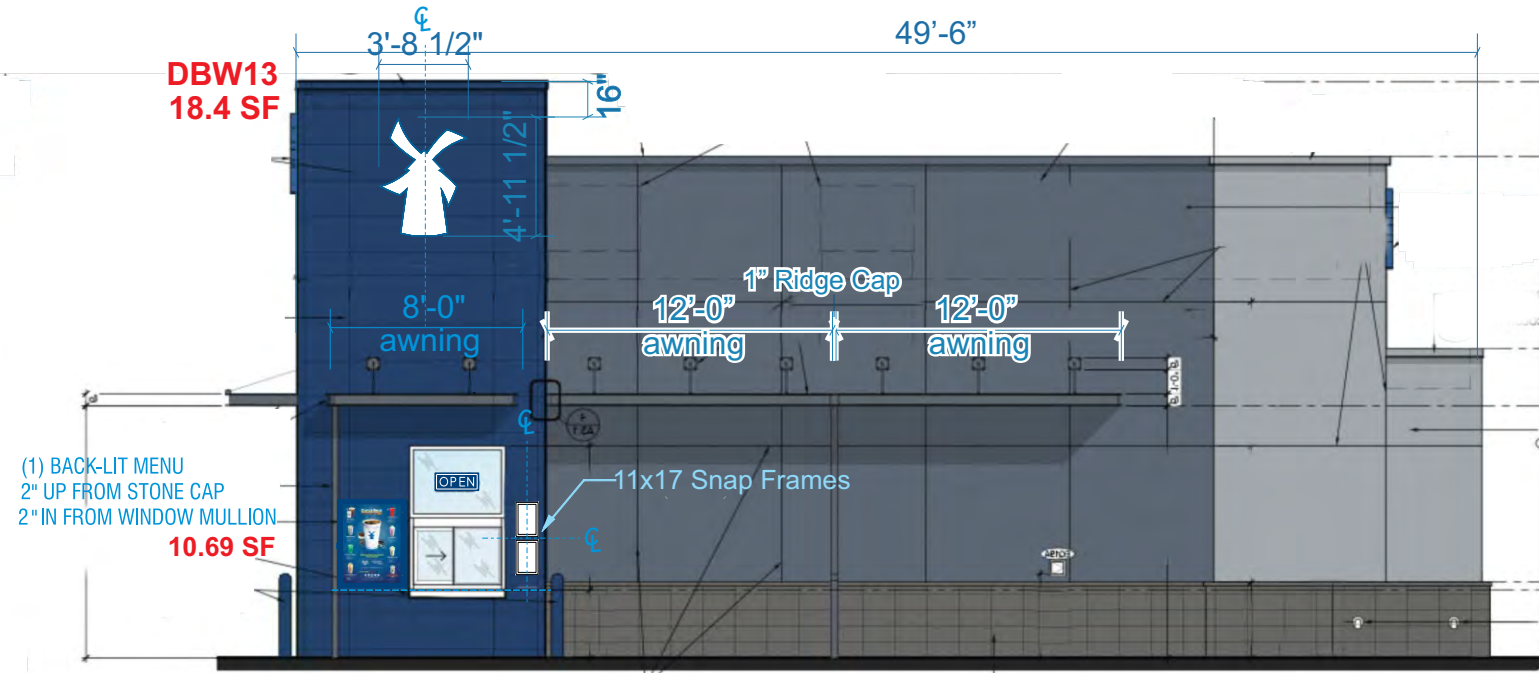
FL2701
2050 S US Hwy 1,
Fort Pierce, FL 34950

DRAWING NO:
1446915067.03
 ARTIST: aaa DATE: 10/22/24
 SHEET: 2 OF 18

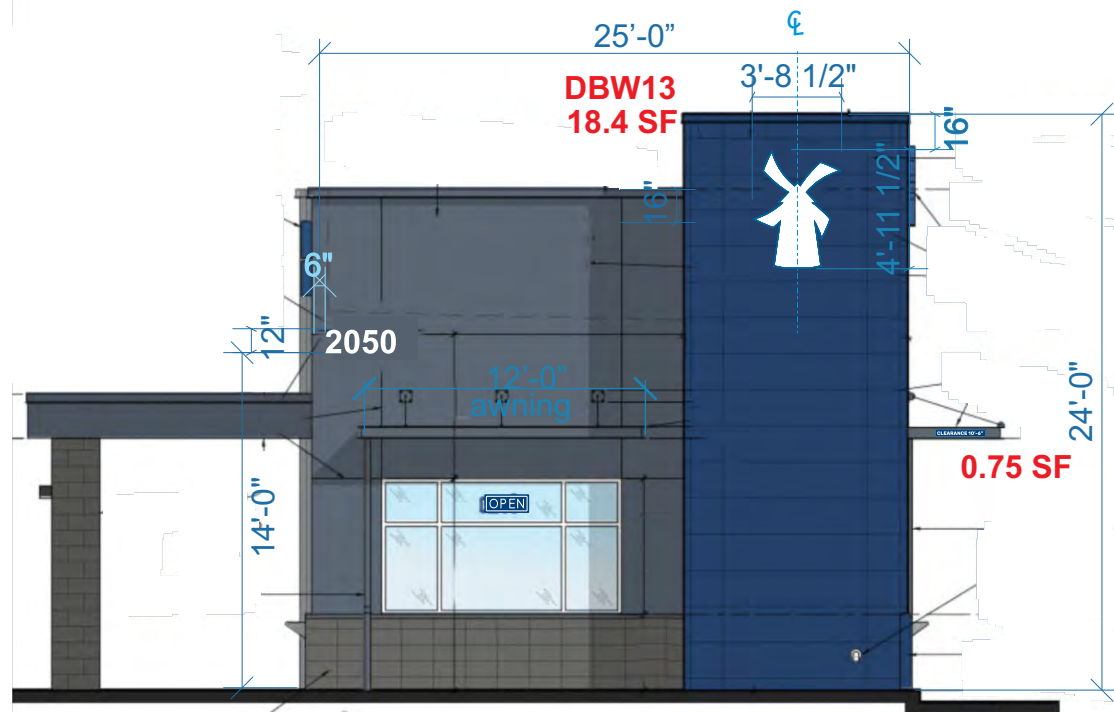
ELEVATIONS



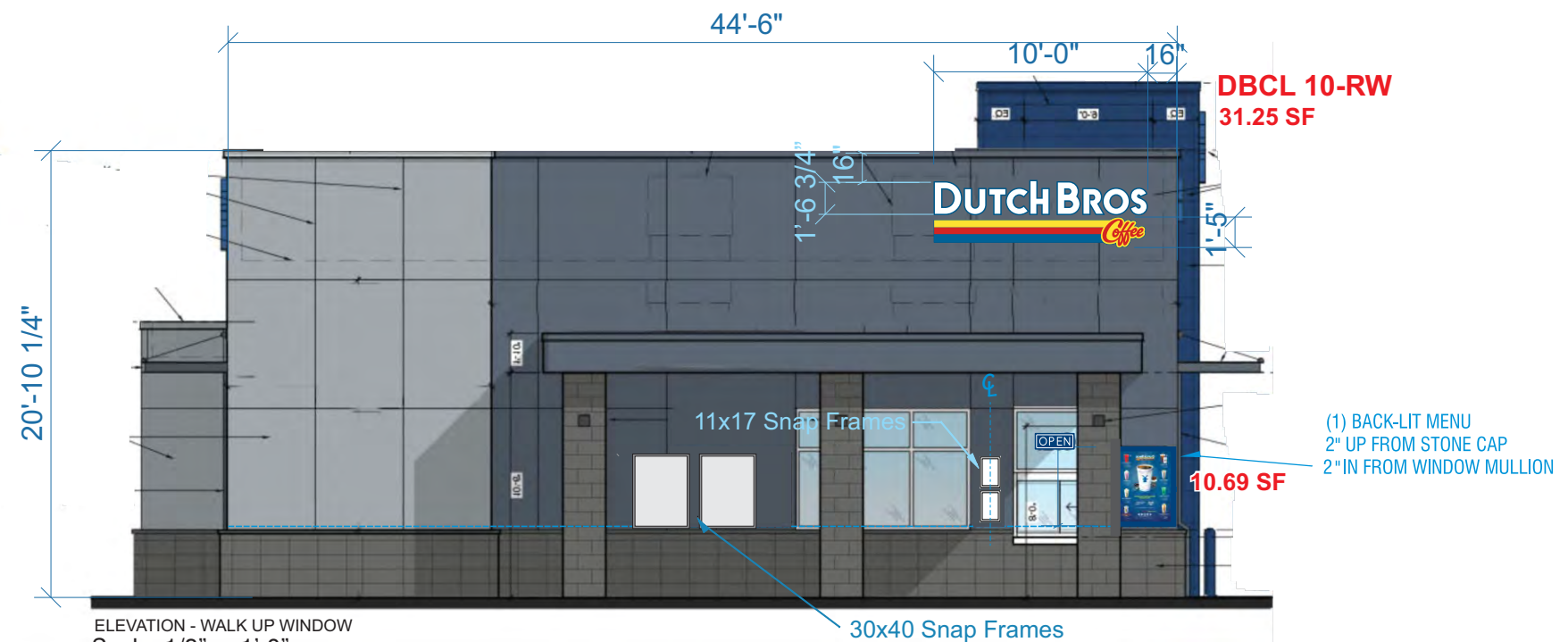
REAR ELEVATION
Scale: 1/8" = 1'-0"



ELEVATION - DRIVE-THRU WINDOW
Scale: 1/8" = 1'-0"



FRONT ELEVATION
Scale: 1/8" = 1'-0"



ELEVATION - WALK UP WINDOW
Scale: 1/8" = 1'-0"

One wall sign or one projecting sign per tenant, which shall not exceed a sign area equal to 20 percent of the total wall face area fronting on the main street. Shall be located on the main street wall face of the establishment or building they identify except that up to 50 percent of such permitted sign area may be located on other wall faces. Per Maria at planning dept, 50% of the front elevation minus the sf of signage on front elevation is the total of the other elevations.



THIS IS AN ORIGINAL UNPUBLISHED DRAWING CREATED FOR YOUR PERSONAL USE IN CONNECTION WITH A PROJECT PLANNED FOR YOU BY CUMMINGS. IT IS NOT TO BE SHOWN OUTSIDE YOUR ORGANIZATION NOR USED, REPRODUCED, COPIED OR EXHIBITED IN ANY FASHION UNLESS AUTHORIZED IN WRITING BY AN OFFICER OF CUMMINGS.

CUSTOMER APPROVAL:

DATE:

Rev. #	DATE	BY
Rev. #1	11/22/24	aaaj
Rev. #2	12/17/24	aaaj
Rev. #3		

Rev. #	DATE	BY
Rev. #4		
Rev. #5		
Rev. #6		

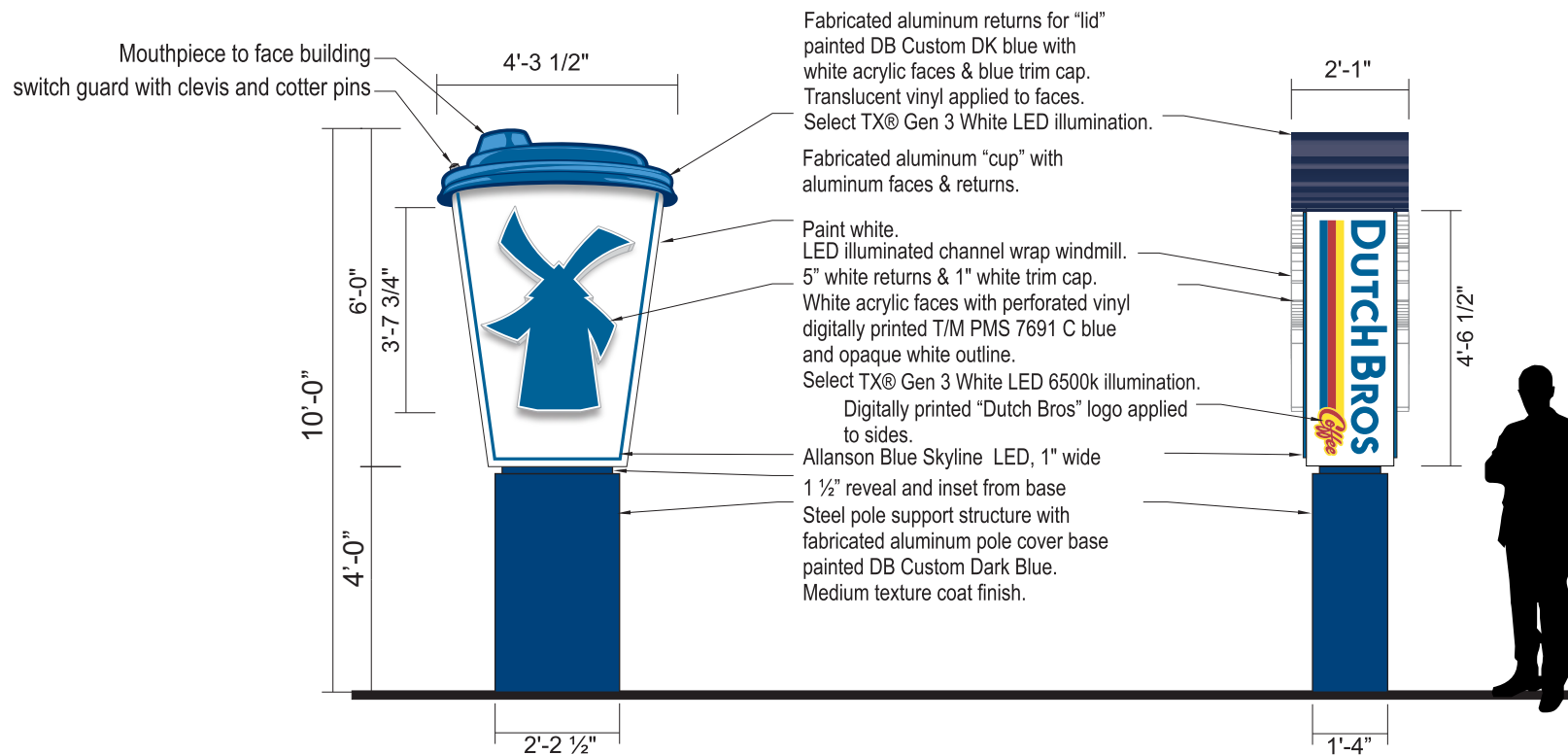
FL2701
2050 S US Hwy 1,
Fort Pierce, FL 34950

DRAWING NO:
1446915067.03
ARTIST: aaa DATE: 10/22/24
SHEET: 4 OF 18

COLOR CODE

- 230-015 YELLOW PSV
- 230-33 RED PSV
- 230-127 INTENSE BLUE PSV
- WHITE ACRYLIC
- DB LIGHT GREY (PMS 429 C)
- DB DARK GREY (PMS 431 C)
- DB CUSTOM DARK BLUE

A DBPY6
25.56 SF



Disconnect switch as per National Electrical Code, 2020 - sign disconnect switch to comply with 600.6 and 600. (A)(1) & shall comply with 2023 8th Edition Florida Building Codes

**FOOTING TO BE EXCAVATED & CONCRETE POURED BY SIGN INSTALLER.
POWER MUST BE SUPPLIED WITHIN 5' OF THE SIGN POLE LOCATION.
FINAL CONNECTION BY SIGN INSTALLER.**

1 sq. ft. for every 3 linear feet of main street lot frontage, up to a maximum of 200 feet. Only one face counts toward sign area. Sites that are less than or equal to three acres shall have a maximum height of ten (10) feet in height. Setback - Five feet from any public right-of-way line, adjacent property line, or structure.



THIS IS AN ORIGINAL UNPUBLISHED DRAWING CREATED FOR YOUR PERSONAL USE IN CONNECTION WITH A PROJECT PLANNED FOR YOU BY CUMMINGS. IT IS NOT TO BE SHOWN OUTSIDE YOUR ORGANIZATION NOR USED, REPRODUCED, COPIED OR EXHIBITED IN ANY FASHION UNLESS AUTHORIZED IN WRITING BY AN OFFICER OF CUMMINGS.

CUSTOMER APPROVAL:

DATE: _____

Rev. #	DATE	BY
Rev. #1	11/22/24	aaaj
Rev. #2	12/17/24	aaaj
Rev. #3		

Rev. #	DATE	BY
Rev. #4		
Rev. #5		
Rev. #6		

FL2701
2050 S US Hwy 1,
Fort Pierce, FL 34950





DRAWING NO:
1446915067.03
ARTIST: aaa DATE: 10/22/24
SHEET: 5 OF 18

B DBCL 10-RW
31.25 SF



DBCL-10 CHANNEL LETTERS
31.25 SF

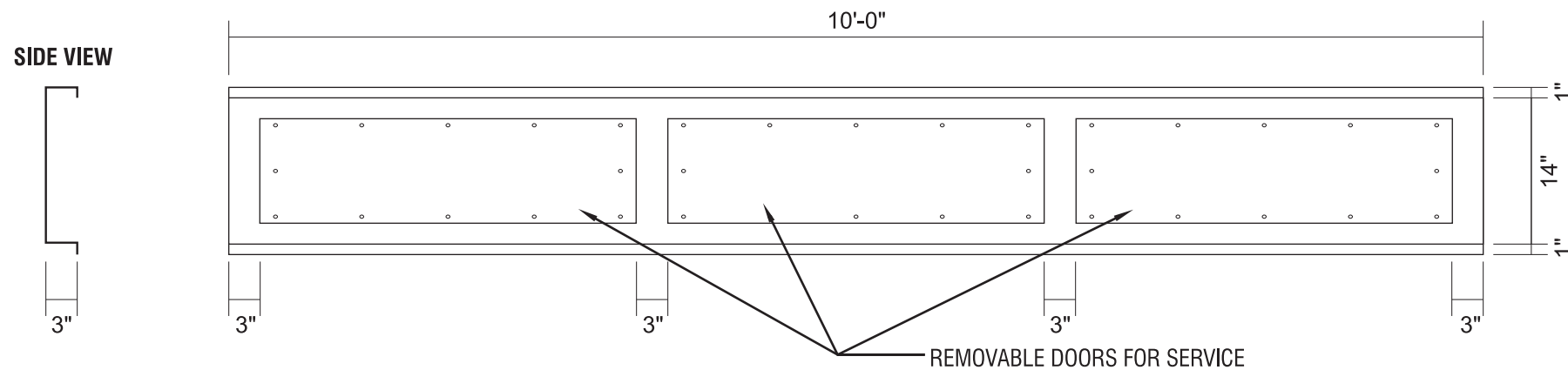
INTERNALLY ILLUMINATED FACE-LIT FLUSH MOUNTED CHANNEL LETTERS
5" DEEP CHANNEL LETTERS.
.040" X 5" RETURNS & 1" TRIM CAP CUSTOM TO MATCH DUTCH BROS LIGHT BLUE.
.177" WHITE ACRYLIC FACES.
230-127 INTENSE BLUE PSV, 230-015 YELLOW PSV, 230-33 RED PSV.
GE NB1000 WHITE LED 7,100K ILLUMINATION.
FLUSH MOUNTED CHANNEL LETTERS WITH REMOTE MOUNTED RACEWAY.
120 V @ 1.2 AMPS UL48 COMPLIANT.
SEAL ALL EXTERIOR WALL PENETRATIONS WITH SILICONE CAULK.
FINAL POWER CONNECTION TO BE COMPLETED BY SIGN INSTALLER
UNLESS LOCAL CODE REQUIRES OTHERWISE.

COLOR CODE	
	230-015 YELLOW PSV
	230-33 RED PSV
	230-127 INTENSE BLUE PSV
	WHITE

REMOTE RW
SCALE: 3/4"=1'-0"

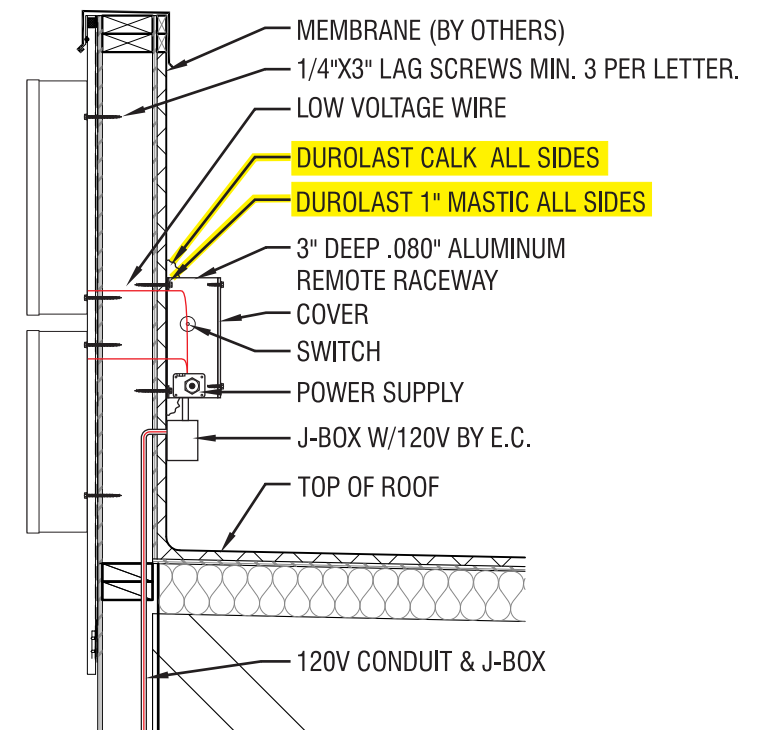
Disconnect switch as per National Electrical Code, 2020 - sign disconnect switch to comply with 600.6 and 600. (A)(1) & shall comply with 2023 8th Edition Florida Building Codes

FABRICATED REMOTE RACEWAY
.040 PRE-COAT WHITE ALUMINUM



CHANNEL LETTERS (Raceway Detail)

ATTACHMENT DETAIL
CHANNEL LETTERS WITH REMOTE RACEWAY



THIS IS AN ORIGINAL UNPUBLISHED DRAWING CREATED FOR YOUR PERSONAL USE IN CONNECTION WITH A PROJECT PLANNED FOR YOU BY CUMMINGS. IT IS NOT TO BE SHOWN OUTSIDE YOUR ORGANIZATION NOR USED, REPRODUCED, COPIED OR EXHIBITED IN ANY FASHION UNLESS AUTHORIZED IN WRITING BY AN OFFICER OF CUMMINGS.

CUSTOMER APPROVAL:

DATE: _____

Rev. #	DATE	BY
Rev. #1	11/22/24	aaaj
Rev. #2	12/17/24	aaaj
Rev. #3		

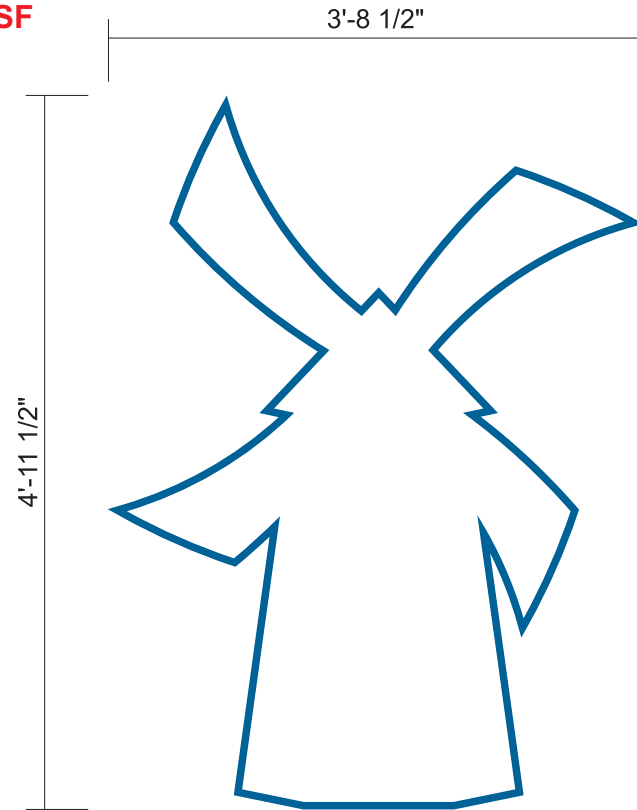
Rev. #	DATE	BY
Rev. #4		
Rev. #5		
Rev. #6		

FL2701
2050 S US Hwy 1,
Fort Pierce, FL 34950

DRAWING NO:
1446915067.03
ARTIST: aaa DATE: 10/22/24
SHEET: 6 OF 18

WINDMILL CHANNEL LETTER

C DBW13
18.4 SF



DBW-13 WINDMILL
18.39 SF

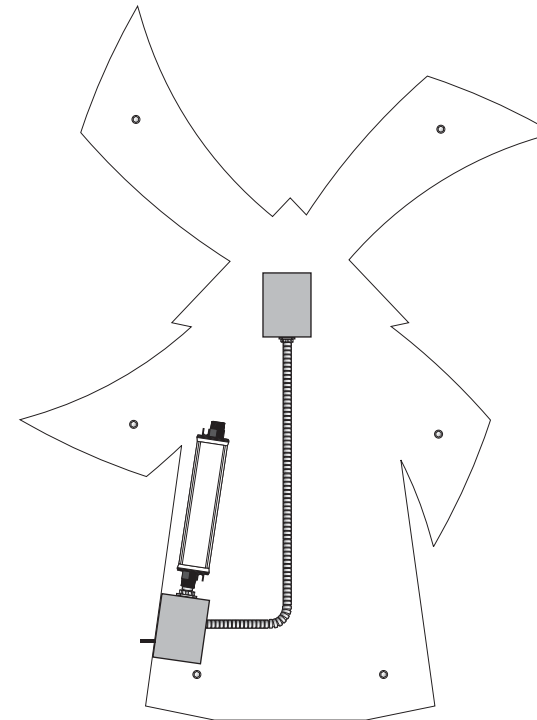
Disconnect switch as per National Electrical Code, 2020 - sign disconnect switch to comply with 600.6 and 600. (A)(1) & shall comply with 2023 8th Edition Florida Building Codes

INTERNALLY ILLUMINATED FACE-LIT FLUSH MOUNTED CHANNEL WRAP LOGO
5" DEEP CHANNEL WRAP.
.040" X 5" RETURNS & 1" TRIM CAP CUSTOM TO MATCH DUTCH BROS LIGHT BLUE.
.177" WHITE ACRYLIC FACE.
230-127 INTENSE BLUE PSV OUTLINE.
LED ILLUMINATION.
FLUSH MOUNTED SELF CONTAINED INSTALLATION.
120 V @ 0.6 AMP UL48 COMPLIANT.
SEAL ALL EXTERIOR WALL PENETRATIONS WITH SILICONE CAULK.
FINAL POWER CONNECTION TO BE COMPLETED BY SIGN INSTALLER
UNLESS LOCAL CODE REQUIRES OTHERWISE.

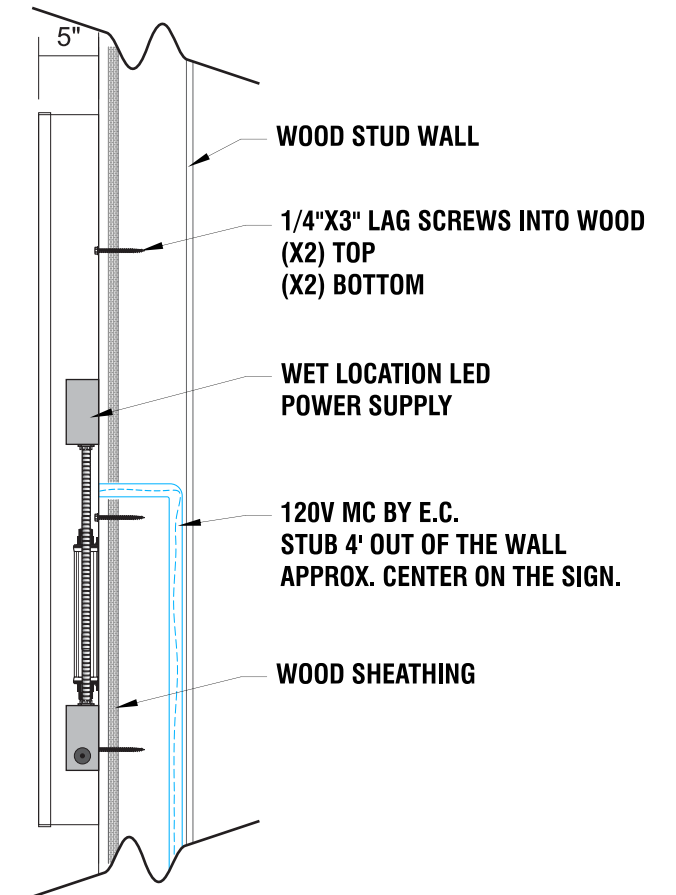
COLOR CODE

- 230-127 INTENSE BLUE PSV
- WHITE

ATTACHMENT DETAIL
SELF CONTAINED CHANNEL LOGO



SIDE VIEW



THIS IS AN ORIGINAL UNPUBLISHED DRAWING CREATED FOR YOUR PERSONAL USE IN CONNECTION WITH A PROJECT PLANNED FOR YOU BY CUMMINGS. IT IS NOT TO BE SHOWN OUTSIDE YOUR ORGANIZATION NOR USED, REPRODUCED, COPIED OR EXHIBITED IN ANY FASHION UNLESS AUTHORIZED IN WRITING BY AN OFFICER OF CUMMINGS.

CUSTOMER APPROVAL:

DATE: _____

Rev. #	DATE	BY
Rev. #1	11/22/24	aaaj
Rev. #2	12/17/24	aaaj
Rev. #3		

Rev. #	DATE	BY
Rev. #4		
Rev. #5		
Rev. #6		

FL2701
2050 S US Hwy 1,
Fort Pierce, FL 34950

DRAWING NO:
1446915067.03
ARTIST: aaa DATE: 10/22/24
SHEET: 7 OF 18

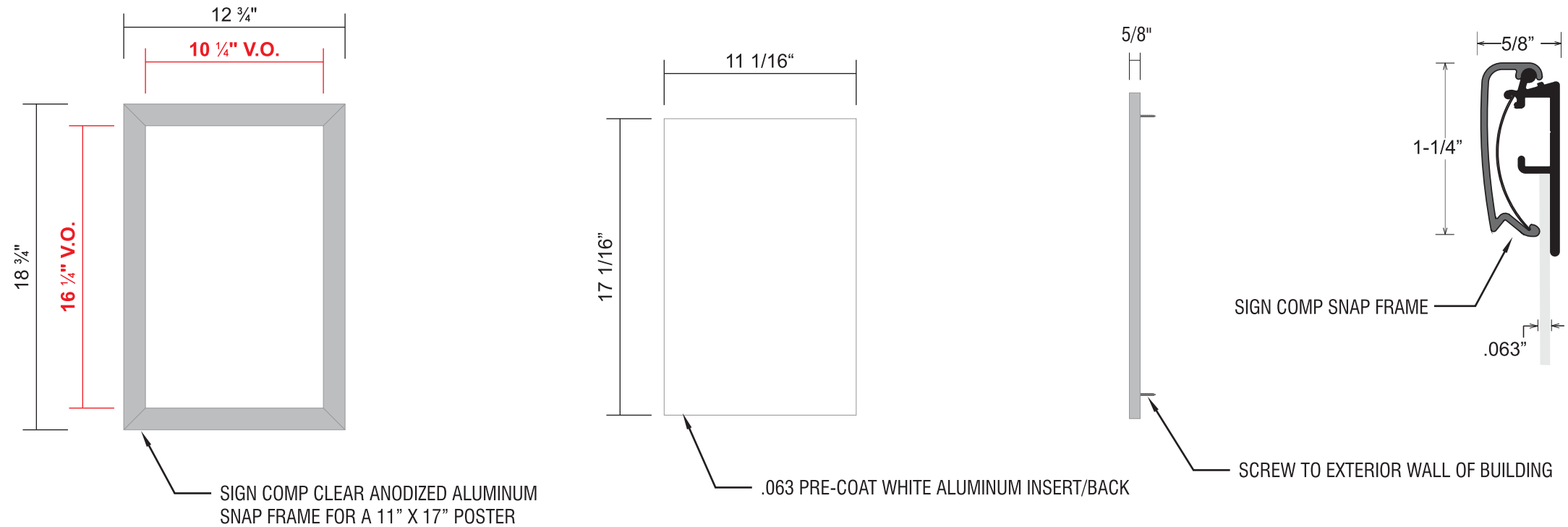
SNAP FRAMES (MENUBOARDS)

Sign Comp Clear Anodized Aluminum Snap Frame

D **DPSF-11X17**
1.3 SF
 Qty. = 4

LAYOUT
 SCALE: 1 1/2"=1'-0"

DETAIL:
 FULL SCALE

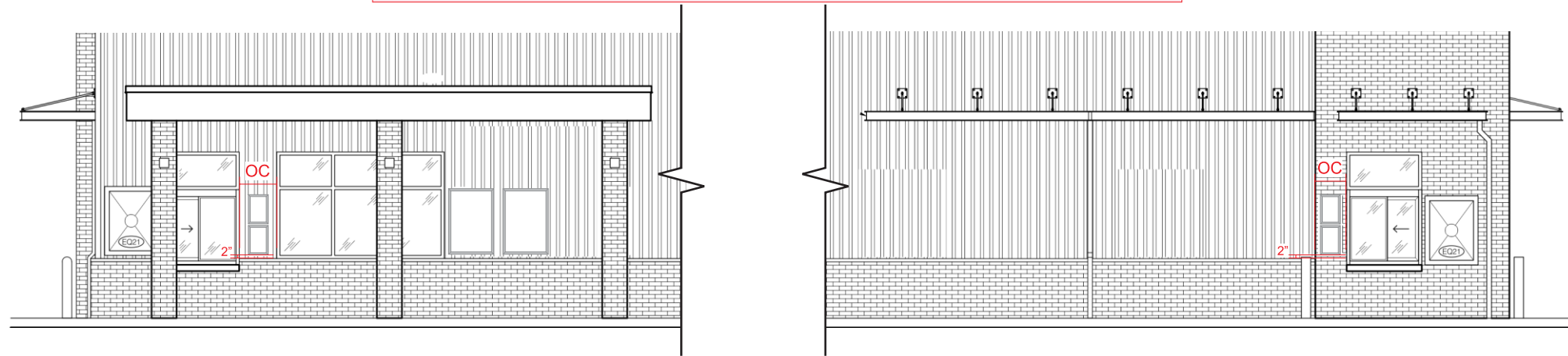


Sign shall comply with 2023 8th Edition Florida Building Codes

ELEVATION:
 WALK-UP WINDOW
 SCALE: 1/8"=1'-0"

Per Maria at planning dept., wall menu boards will not count toward the allowed sf. Also, Snap frames will not count.

ELEVATION:
 DRIVE-THRU WINDOW
 SCALE: 1/8"=1'-0"



(UNLESS OTHERWISE DIRECTED)
 CENTERED BETWEEN MULLIONS 2" ABOVE STONE CAP
 1" VERTICAL GAP BETWEEN SNAP FRAMES

(UNLESS OTHERWISE DIRECTED)
 CENTERED BETWEEN MULLIONS 2" ABOVE STONE CAP
 1" VERTICAL GAP BETWEEN SNAP FRAMES



THIS IS AN ORIGINAL UNPUBLISHED DRAWING CREATED FOR YOUR PERSONAL USE IN CONNECTION WITH A PROJECT PLANNED FOR YOU BY CUMMINGS. IT IS NOT TO BE SHOWN OUTSIDE YOUR ORGANIZATION NOR USED, REPRODUCED, COPIED OR EXHIBITED IN ANY FASHION UNLESS AUTHORIZED IN WRITING BY AN OFFICER OF CUMMINGS.

CUSTOMER APPROVAL:

 DATE: _____

Rev. #	DATE	BY
Rev. #1	11/22/24	aaaj
Rev. #2	12/17/24	aaaj
Rev. #3		

Rev. #	DATE	BY
Rev. #4		
Rev. #5		
Rev. #6		

FL2701
2050 S US Hwy 1,
Fort Pierce, FL 34950

DRAWING NO:
1446915067.03
 ARTIST: aaa DATE: 10/22/24
 SHEET: 8 OF 18

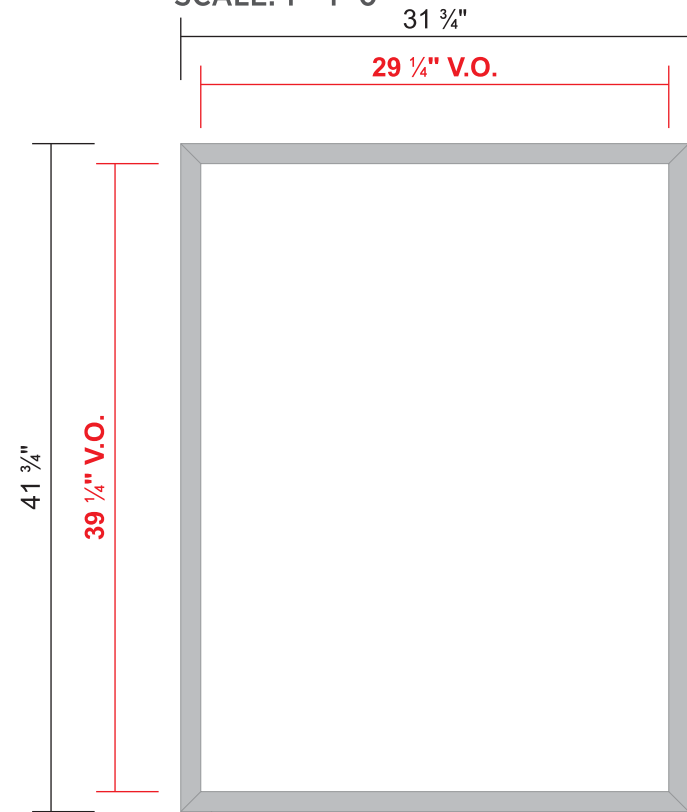
THIS DESIGN REMAINS OUR EXCLUSIVE PROPERTY AND CANNOT BE DUPLICATED WITHOUT WRITTEN CONSENT

SNAP FRAMES (MENUBOARDS)

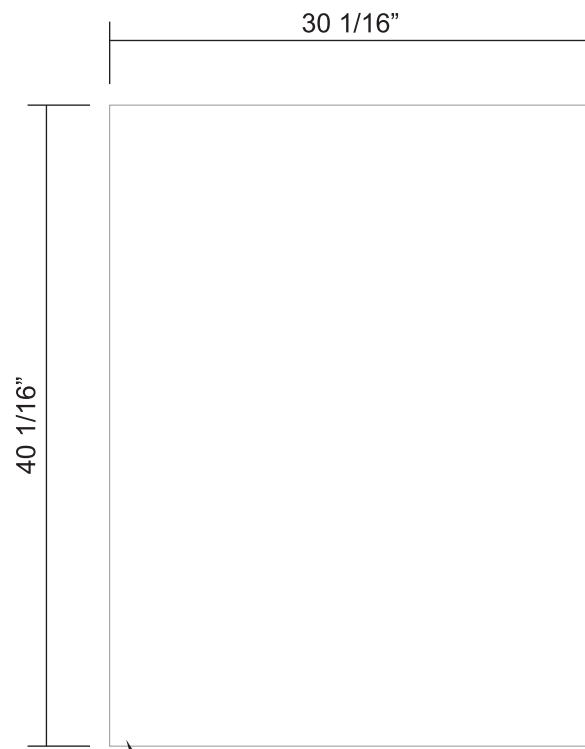
Sign Comp Clear Anodized Aluminum Snap Frame

E DPSF-30X40
8.33 SF
 Qty. = 4

LAYOUT
 SCALE: 1"=1'-0"



SIGN COMP CLEAR ANODIZED ALUMINUM SNAP FRAME FOR A 30" X 40" POSTER



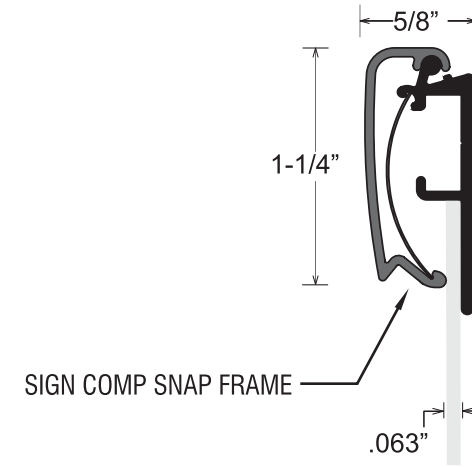
.063 PRE-COAT WHITE ALUMINUM BACK

5/8"



SCREW TO EXTERIOR WALL OF BUILDING

DETAIL:
 FULL SCALE



DBSnapFrame-NL-11x17SC
 DBSnapFrame-NL-30x40SC

4
2

Sign shall comply with 2023 8th Edition Florida Building Codes

Per Maria at planning dept., wall menu boards will not count toward the allowed sf. Also, Snap frames will not count.



ELEVATION:
 WALK-UP WINDOW
 SCALE: 1/8"=1'-0"
 (UNLESS OTHERWISE DIRECTED)
 2" INSET FROM MULLION
 2" ABOVE STONE CAP
 6" BETWEEN MENUS



THIS IS AN ORIGINAL UNPUBLISHED DRAWING CREATED FOR YOUR PERSONAL USE IN CONNECTION WITH A PROJECT PLANNED FOR YOU BY CUMMINGS. IT IS NOT TO BE SHOWN OUTSIDE YOUR ORGANIZATION NOR USED, REPRODUCED, COPIED OR EXHIBITED IN ANY FASHION UNLESS AUTHORIZED IN WRITING BY AN OFFICER OF CUMMINGS.

CUSTOMER APPROVAL:

 DATE: _____

Rev. #	DATE	BY
Rev. #1	11/22/24	aaaj
Rev. #2	12/17/24	aaaj
Rev. #3		

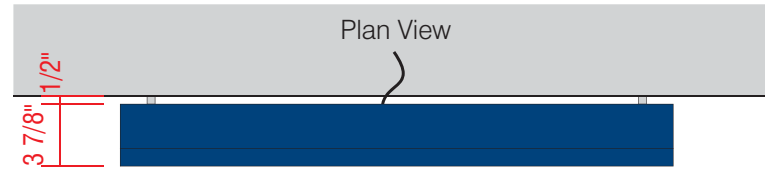
Rev. #	DATE	BY
Rev. #4		
Rev. #5		
Rev. #6		

FL2701
2050 S US Hwy 1,
Fort Pierce, FL 34950

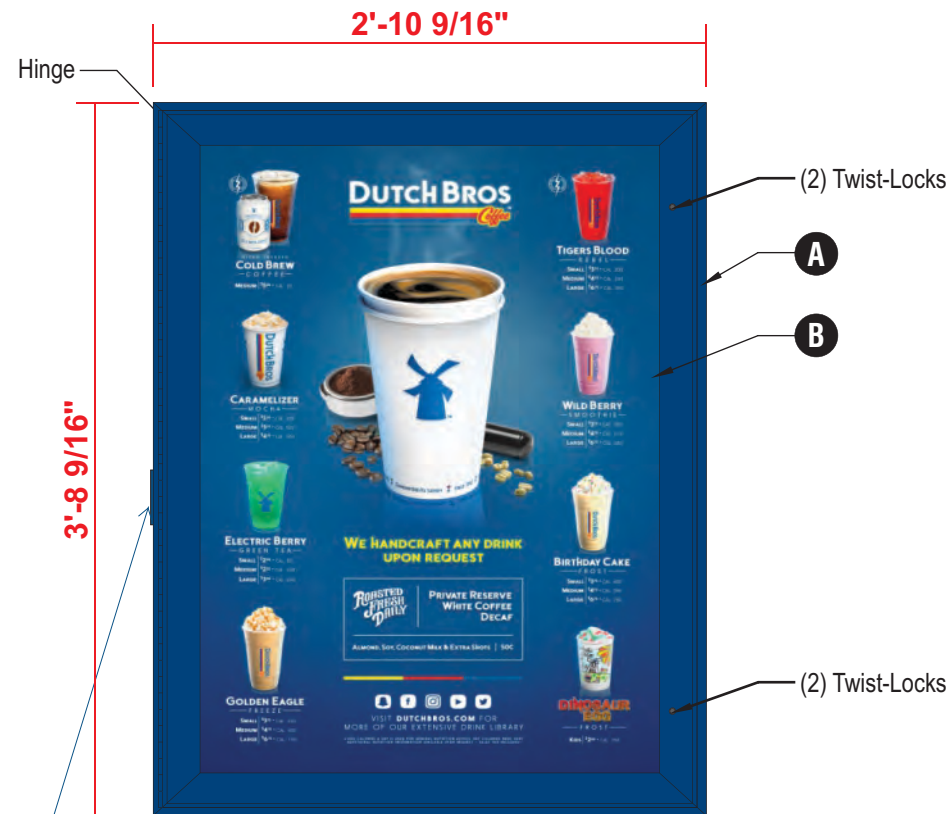
DRAWING NO:
1446915067.03
 ARTIST: aaa DATE: 10/22/24
 SHEET: 9 OF 18

THIS DESIGN REMAINS OUR EXCLUSIVE PROPERTY AND CANNOT BE DUPLICATED WITHOUT WRITTEN CONSENT

MENU SIGNS V5 - WALL-MOUNTED



F DBMENU-WM
10.69 SF
 Qty. = 2



SCALE: 1"=1'-0"

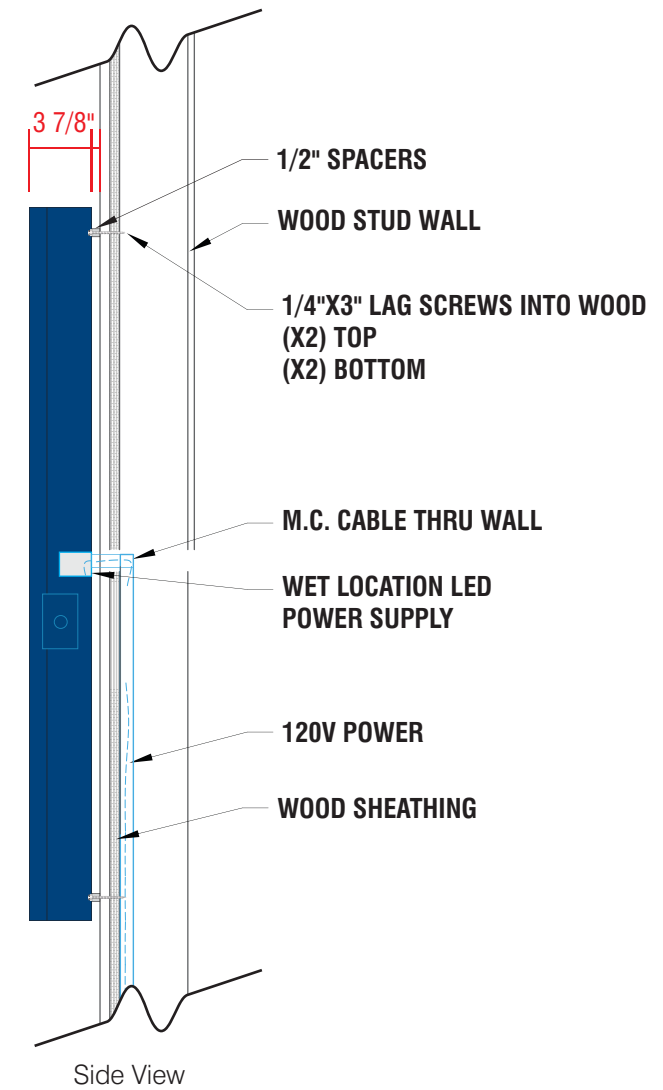
Key-turn, flush switch, waterproof

COLOR CODE

	DIGITAL PRINT
	POWDER COATED DB CUSTOM DARK BLUE

- A WALL-MOUNTED, BACKLIT MENU SIGN**
 - PRINTED MENU PANEL NOT INCLUDED
 - LED OUTDOOR LIGHT BOX
 - LOCKABLE HINGED DOOR
 - ALUMINUM CONSTRUCTION
- B PRINTED LIGHT GUIDE PANEL**
 - AS SEPARATE ORDER

ATTACHMENT DETAIL ILLUMINATED WALL MOUNTED MENU



Disconnect switch as per National Electrical Code, 2020 - sign disconnect switch to comply with 600.6 and 600. (A)(1) & shall comply with 2023 8th Edition Florida Building Codes

Per Maria at planning dept., wall menu boards will not count toward the allowed sf. Also, Snap frames will not count.



THIS IS AN ORIGINAL UNPUBLISHED DRAWING CREATED FOR YOUR PERSONAL USE IN CONNECTION WITH A PROJECT PLANNED FOR YOU BY CUMMINGS. IT IS NOT TO BE SHOWN OUTSIDE YOUR ORGANIZATION NOR USED, REPRODUCED, COPIED OR EXHIBITED IN ANY FASHION UNLESS AUTHORIZED IN WRITING BY AN OFFICER OF CUMMINGS.

CUSTOMER APPROVAL: _____
 DATE: _____

Rev. #	DATE	BY
Rev. #1	11/22/24	aaaj
Rev. #2	12/17/24	aaaj
Rev. #3		

Rev. #	DATE	BY
Rev. #4		
Rev. #5		
Rev. #6		

FL2701
2050 S US Hwy 1,
Fort Pierce, FL 34950

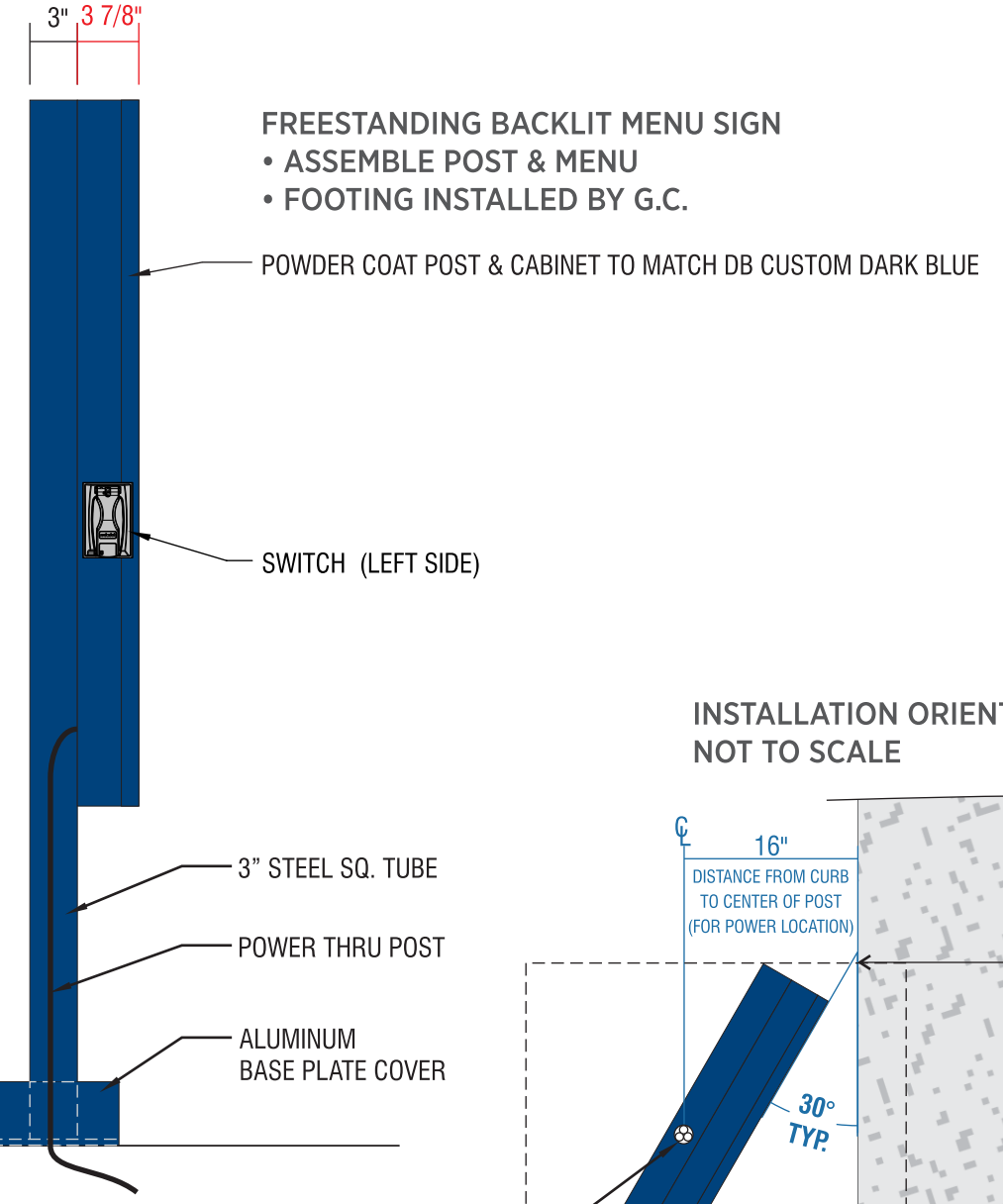
DRAWING NO:
1446915067.03
 ARTIST: aaa DATE: 10/22/24
 SHEET: 10 OF 18

G DBMENU-PM-SF
10.69 SF
 Qty. = 4

SCALE: 1"=1'-0"

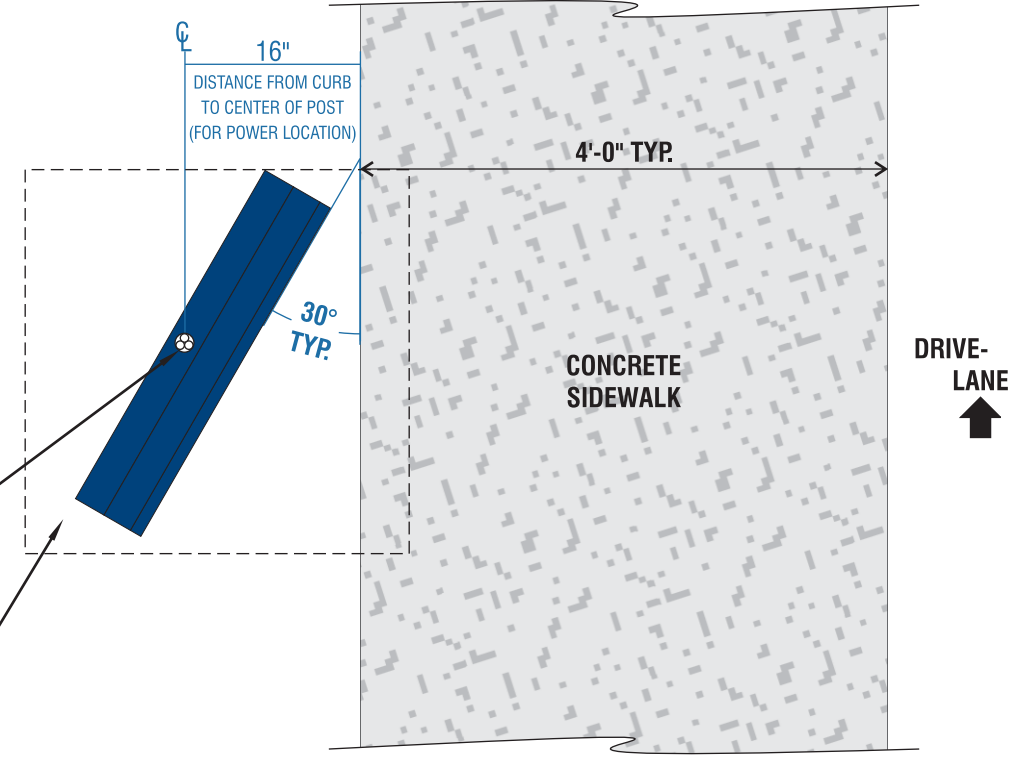


SIDE VIEW



FREESTANDING BACKLIT MENU SIGN
 • ASSEMBLE POST & MENU
 • FOOTING INSTALLED BY G.C.

INSTALLATION ORIENTATION DETAIL
 NOT TO SCALE



Disconnect switch as per National Electrical Code, 2020 - sign disconnect switch to comply with 600.6 and 600. (A)(1) & shall comply with 2023 8th Edition Florida Building Codes



THIS IS AN ORIGINAL UNPUBLISHED DRAWING CREATED FOR YOUR PERSONAL USE IN CONNECTION WITH A PROJECT PLANNED FOR YOU BY CUMMINGS. IT IS NOT TO BE SHOWN OUTSIDE YOUR ORGANIZATION NOR USED, REPRODUCED, COPIED OR EXHIBITED IN ANY FASHION UNLESS AUTHORIZED IN WRITING BY AN OFFICER OF CUMMINGS.

CUSTOMER APPROVAL: _____
 DATE: _____

Rev. #	DATE	BY	Rev. #	DATE	BY
Rev. #1	11/22/24	aaaj	Rev. #4		
Rev. #2	12/17/24	aaaj	Rev. #5		
Rev. #3			Rev. #6		

FL2701
2050 S US Hwy 1,
Fort Pierce, FL 34950

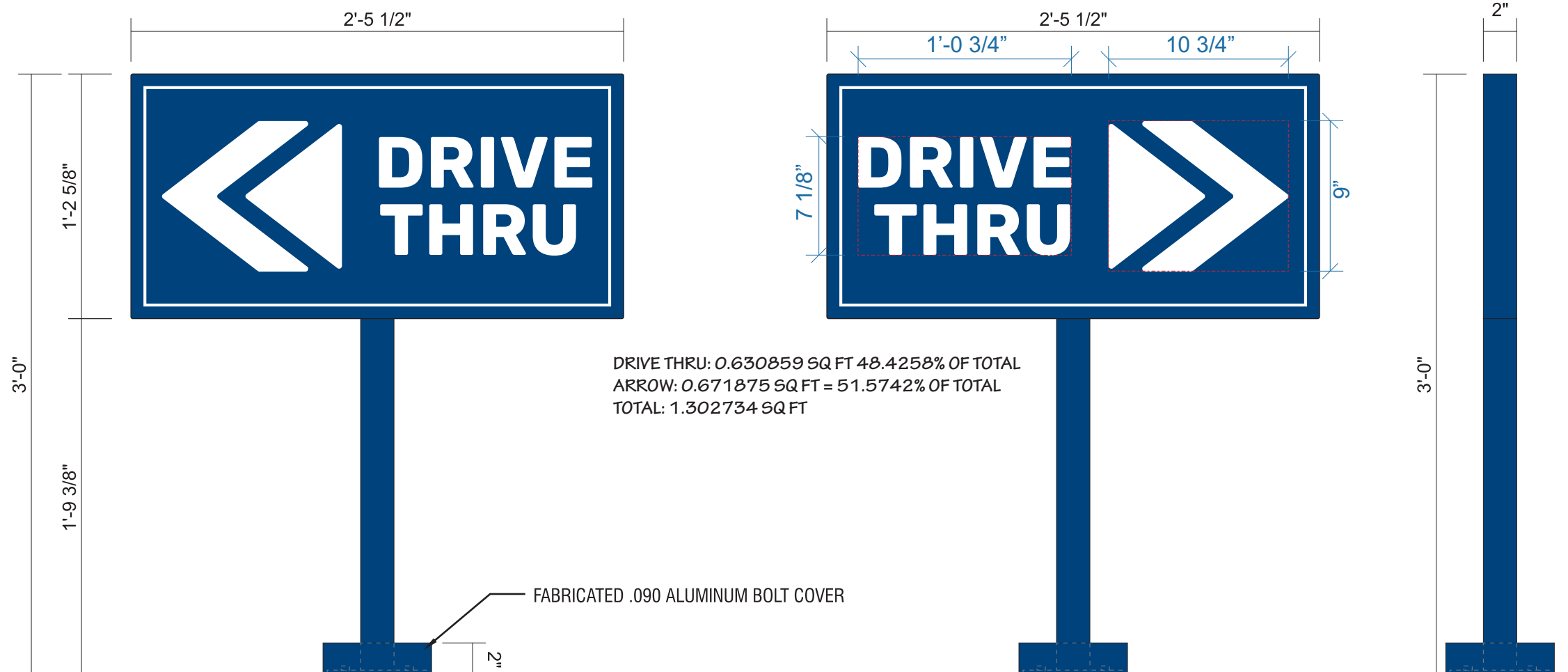
DRAWING NO:
1446915067.03
 ARTIST: aaa DATE: 10/22/24
 SHEET: 11 OF 18

DIRECTIONAL

I DBDIR-DT-DF
3.12 SF

LAYOUT
SCALE: 1 1/2" = 1'-0"

SIDE VIEW



DRIVE THRU: 0.630859 SQ FT 48.4258% OF TOTAL
ARROW: 0.671875 SQ FT = 51.5742% OF TOTAL
TOTAL: 1.302734 SQ FT

FABRICATED .090 ALUMINUM BOLT COVER

DIAMOND GRADE REFLECTIVE WHITE VINYL WITH DIGITALLY PRINTED BACKGROUND TO MATCH DB CUSTOM DARK BLUE
2" X 2" SQUARE TUBE ALUMINUM FRAME & POST WITH ALUMINUM FACES & 3/8" X 6" X 6" PLATE
FABRICATED .090 ALUMINUM BOLT COVER
PAINT DB CUSTOM DARK BLUE
INSTALL PLATE-MOUNT SIGN WITH HILTI KWIK BOLTS
PAD FOOTING INSTALLED BY GC

Sign shall comply with 2023 8th Edition Florida Building Codes

CODE NOTES:
Maximum 6 sf. OAH 3 ft



THIS IS AN ORIGINAL UNPUBLISHED DRAWING CREATED FOR YOUR PERSONAL USE IN CONNECTION WITH A PROJECT PLANNED FOR YOU BY CUMMINGS. IT IS NOT TO BE SHOWN OUTSIDE YOUR ORGANIZATION NOR USED, REPRODUCED, COPIED OR EXHIBITED IN ANY FASHION UNLESS AUTHORIZED IN WRITING BY AN OFFICER OF CUMMINGS.

CUSTOMER APPROVAL:

DATE: _____

Rev. #	DATE	BY
Rev. #1	11/22/24	aaaj
Rev. #2	12/17/24	aaaj
Rev. #3		

Rev. #	DATE	BY
Rev. #4		
Rev. #5		
Rev. #6		

FL2701
2050 S US Hwy 1,
Fort Pierce, FL 34950

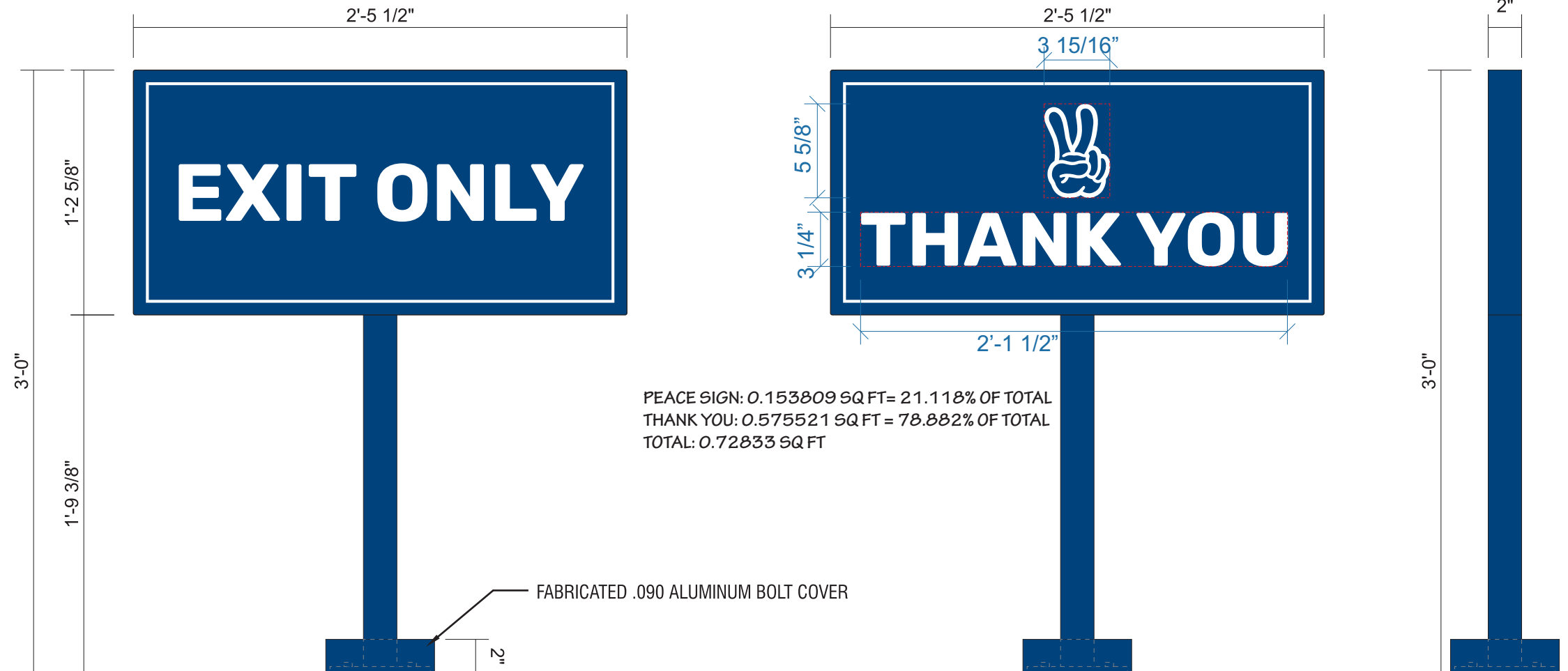
DRAWING NO:
1446915067.03
ARTIST: aaa DATE: 10/22/24
SHEET: 12 OF 18

DIRECTIONAL

J DBDIR-EXIT-DF
3.12 SF

LAYOUT
SCALE: 1 1/2" = 1'-0"

SIDE VIEW



PEACE SIGN: 0.153809 SQ FT = 21.118% OF TOTAL
THANK YOU: 0.575521 SQ FT = 78.882% OF TOTAL
TOTAL: 0.72833 SQ FT

FABRICATED .090 ALUMINUM BOLT COVER

DIAMOND GRADE REFLECTIVE WHITE VINYL WITH DIGITALLY PRINTED BACKGROUND TO MATCH DB CUSTOM DARK BLUE
2" X 2" SQUARE TUBE ALUMINUM FRAME & POST WITH ALUMINUM FACES & 3/8" X 6" X 6" PLATE
FABRICATED .090 ALUMINUM BOLT COVER
PAINT DB CUSTOM DARK BLUE
INSTALL PLATE-MOUNT SIGN WITH HILTI KWIK BOLTS
PAD FOOTING INSTALLED BY GC

Sign shall comply with 2023 8th Edition Florida Building Codes

CODE NOTES:
Maximum 6 sf. OAH 3 ft



THIS IS AN ORIGINAL UNPUBLISHED DRAWING CREATED FOR YOUR PERSONAL USE IN CONNECTION WITH A PROJECT PLANNED FOR YOU BY CUMMINGS. IT IS NOT TO BE SHOWN OUTSIDE YOUR ORGANIZATION NOR USED, REPRODUCED, COPIED OR EXHIBITED IN ANY FASHION UNLESS AUTHORIZED IN WRITING BY AN OFFICER OF CUMMINGS.

CUSTOMER APPROVAL:

DATE: _____

Rev. #	DATE	BY
Rev. #1	11/22/24	aaaj
Rev. #2	12/17/24	aaaj
Rev. #3		

Rev. #	DATE	BY
Rev. #4		
Rev. #5		
Rev. #6		

FL2701
2050 S US Hwy 1,
Fort Pierce, FL 34950

DRAWING NO:
1446915067.03
ARTIST: aaa DATE: 10/22/24
SHEET: 13 OF 18

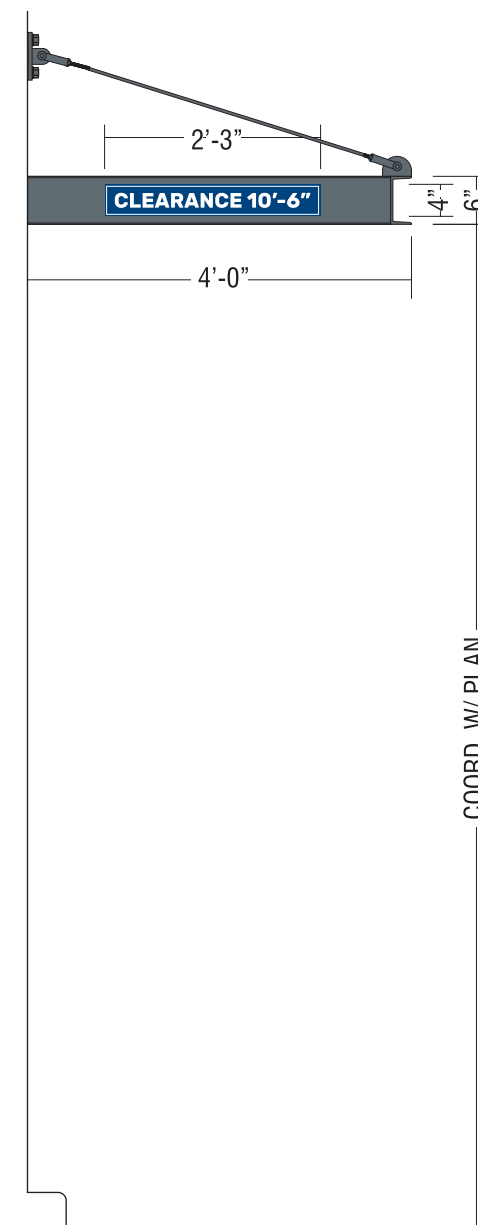
AWNING MOUNTED CLEARANCE SIGN

K DBCLEARANCE PANEL
0.75 SF

CLEARANCE SIGN
SCALE: 3"=1'-0"



ELEVATION
SCALE: 1/2"=1'-0"



3MM ACM SIGN PANEL PAINTED DB CUSTOM DARK BLUE.
WHITE REFLECTIVE VINYL COPY & BORDER (NUMBERS SHIPPED LOOSE & FIELD APPLIED).
MOUNT DIRECTLY TO ALUMINUM AWNING DRIVE-THRU ENTRANCE SIDE
WITH EXTERIOR GRADE 3M VHB TAPE.

Sign shall comply with 2023 8th Edition Florida Building Codes



THIS IS AN ORIGINAL UNPUBLISHED DRAWING CREATED FOR YOUR PERSONAL USE IN CONNECTION WITH A PROJECT PLANNED FOR YOU BY CUMMINGS. IT IS NOT TO BE SHOWN OUTSIDE YOUR ORGANIZATION NOR USED, REPRODUCED, COPIED OR EXHIBITED IN ANY FASHION UNLESS AUTHORIZED IN WRITING BY AN OFFICER OF CUMMINGS.

CUSTOMER APPROVAL:

DATE: _____

Rev. #	DATE	BY
Rev. #1	11/22/24	aaaj
Rev. #2	12/17/24	aaaj
Rev. #3		

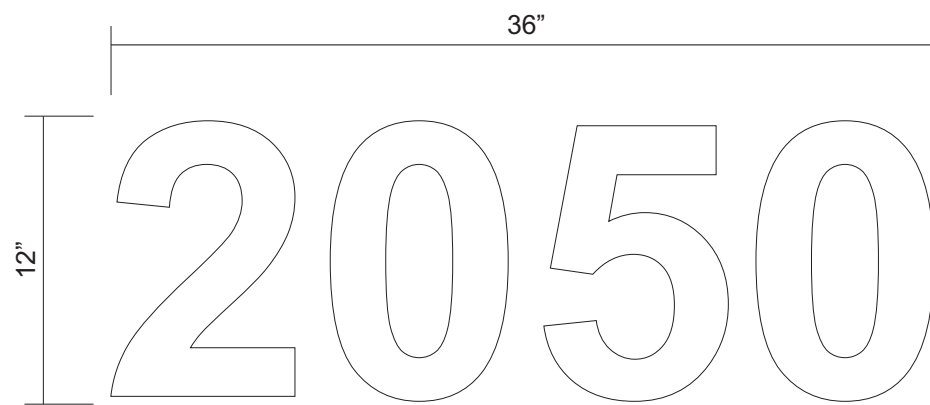
Rev. #	DATE	BY
Rev. #4		
Rev. #5		
Rev. #6		

FL2701
2050 S US Hwy 1,
Fort Pierce, FL 34950

DRAWING NO:
1446915067.03
ARTIST: aaa DATE: 10/22/24
SHEET: 14 OF 18

ADDRESS NUMBERS

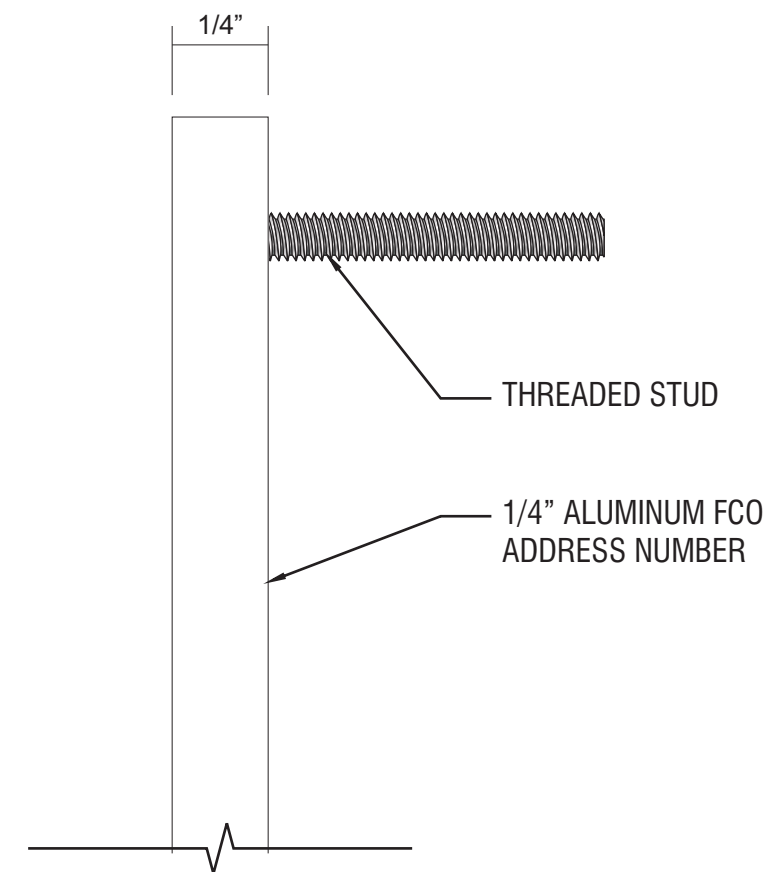
L DBADRES-12
3 SF



ADDRESS NUMBERS:
FONT: ARIAL BOLD
MATERIAL: 1/4" THICK ALUMINUM
COLOR: PAINTED SATIN WHITE
INSTALLATION: STUD MOUNTED FLUSH TO BUILDING

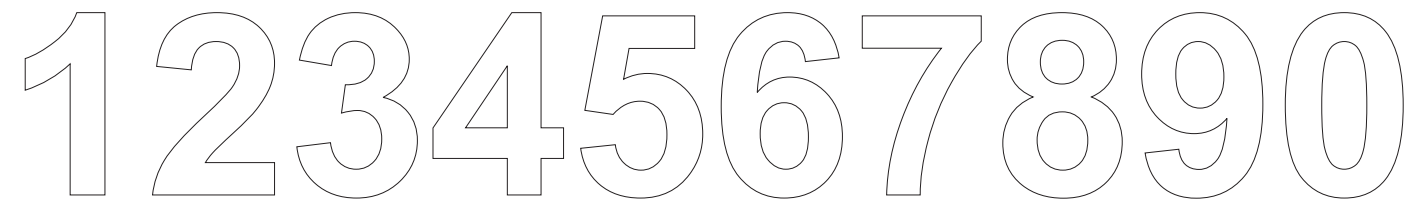
Sign shall comply with 2023 8th Edition Florida Building Codes

SIDE DETAIL
FULL SCALE



COLOR CODE

SATIN WHITE PAINT



1/4" ARIAL BOLD



THIS IS AN ORIGINAL UNPUBLISHED DRAWING CREATED FOR YOUR PERSONAL USE IN CONNECTION WITH A PROJECT PLANNED FOR YOU BY CUMMINGS. IT IS NOT TO BE SHOWN OUTSIDE YOUR ORGANIZATION NOR USED, REPRODUCED, COPIED OR EXHIBITED IN ANY FASHION UNLESS AUTHORIZED IN WRITING BY AN OFFICER OF CUMMINGS.

CUSTOMER APPROVAL:

DATE: _____

Rev. #	DATE	BY
Rev. #1	11/22/24	aaaj
Rev. #2	12/17/24	aaaj
Rev. #3		

Rev. #	DATE	BY
Rev. #4		
Rev. #5		
Rev. #6		

FL2701
2050 S US Hwy 1,
Fort Pierce, FL 34950

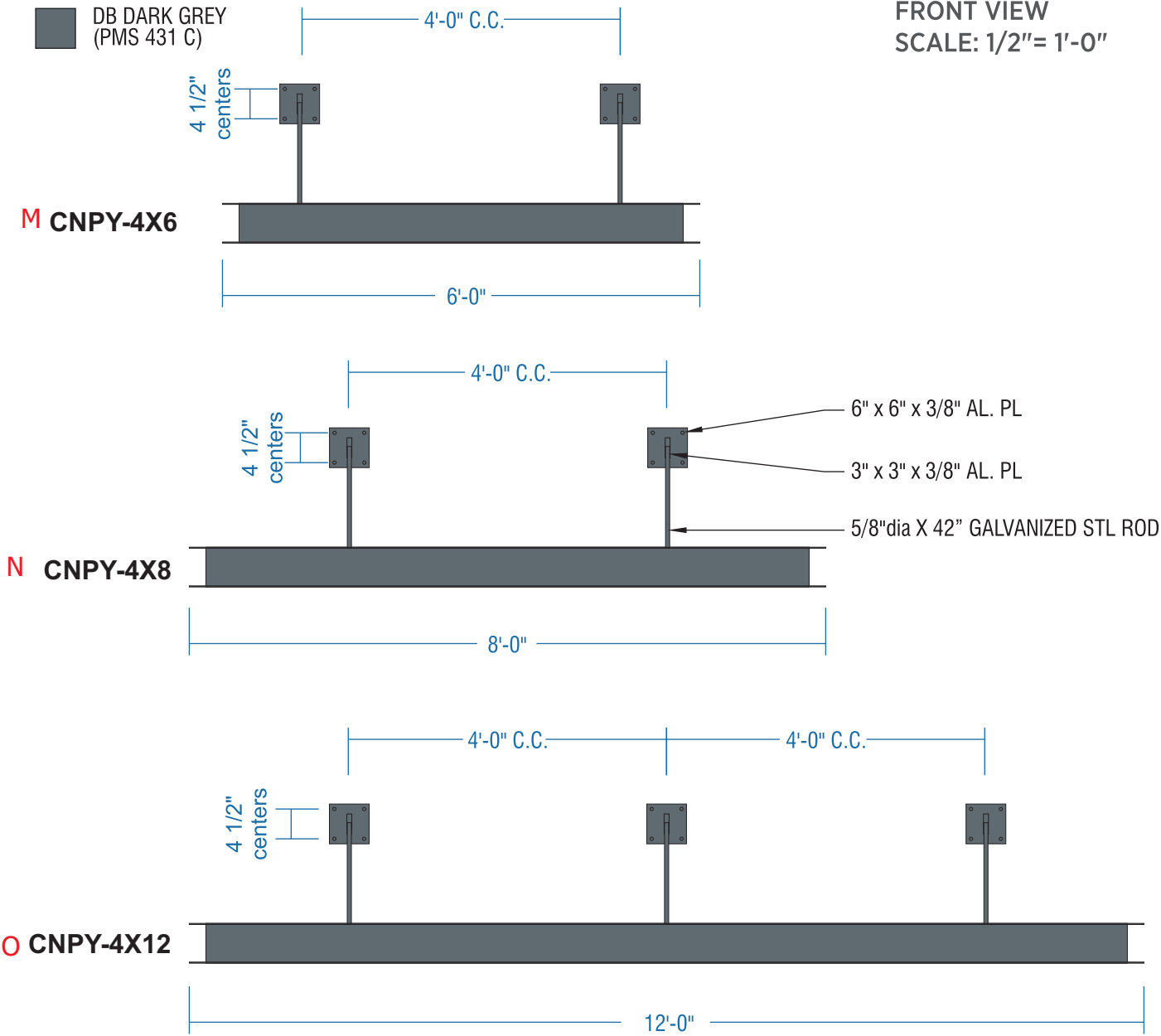
DRAWING NO:
1446915067.03
 ARTIST: aaa DATE: 10/22/24
 SHEET: 15 OF 18

METAL AWNINGS

COLOR CODE

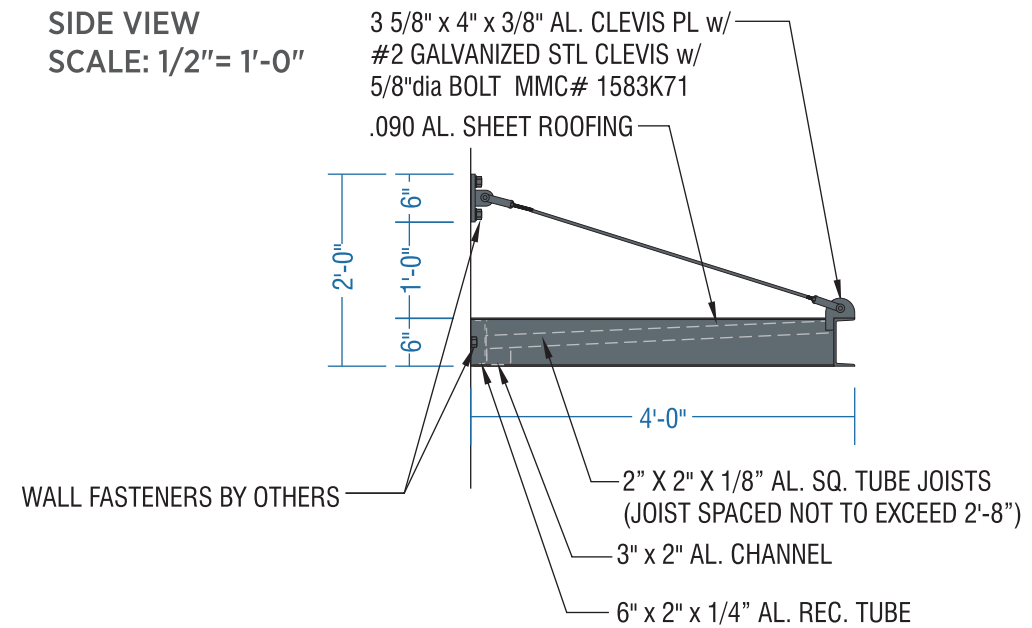
DB DARK GREY
(PMS 431 C)

FRONT VIEW
SCALE: 1/2" = 1'-0"

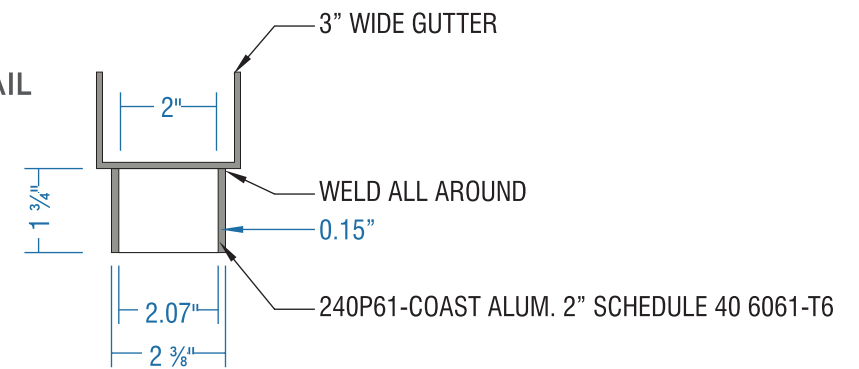


6" ALUMINUM C-CHANNEL FRONT & SIDES, WITH FLANGE POINTING OUT. (C6 x 2.83)
.090 ALUMINUM SHEET ROOFING MOUNTED INSIDE C-CHANNEL & DRAINAGE GUTTER CHANNEL SLOPED TOWARDS BUILDING.
TURNBUCKLES, 5/8" GALVANIZED STEEL ROD SUPPORTS WITH #2 GALVANIZED STEEL CLEVIS & PIN
ATTACHED TO 6" X 6" X 3/8" ALUMINUM PLATE/BRACKET AT WALL.
PAINT ENTIRE CANOPY, BRACKETS, SUPPORTS DB CUSTOM DARK GREY.
INSTALLATION BY G.C.

SIDE VIEW
SCALE: 1/2" = 1'-0"



DOWNSPOUT DETAIL
SCALE: 3" = 1'-0"



THIS IS AN ORIGINAL UNPUBLISHED DRAWING CREATED FOR YOUR PERSONAL USE IN CONNECTION WITH A PROJECT PLANNED FOR YOU BY CUMMINGS. IT IS NOT TO BE SHOWN OUTSIDE YOUR ORGANIZATION NOR USED, REPRODUCED, COPIED OR EXHIBITED IN ANY FASHION UNLESS AUTHORIZED IN WRITING BY AN OFFICER OF CUMMINGS.

CUSTOMER APPROVAL:

DATE:

Rev. #	DATE	BY
Rev. #1	11/22/24	aaaj
Rev. #2	12/17/24	aaaj
Rev. #3		

Rev. #	DATE	BY
Rev. #4		
Rev. #5		
Rev. #6		

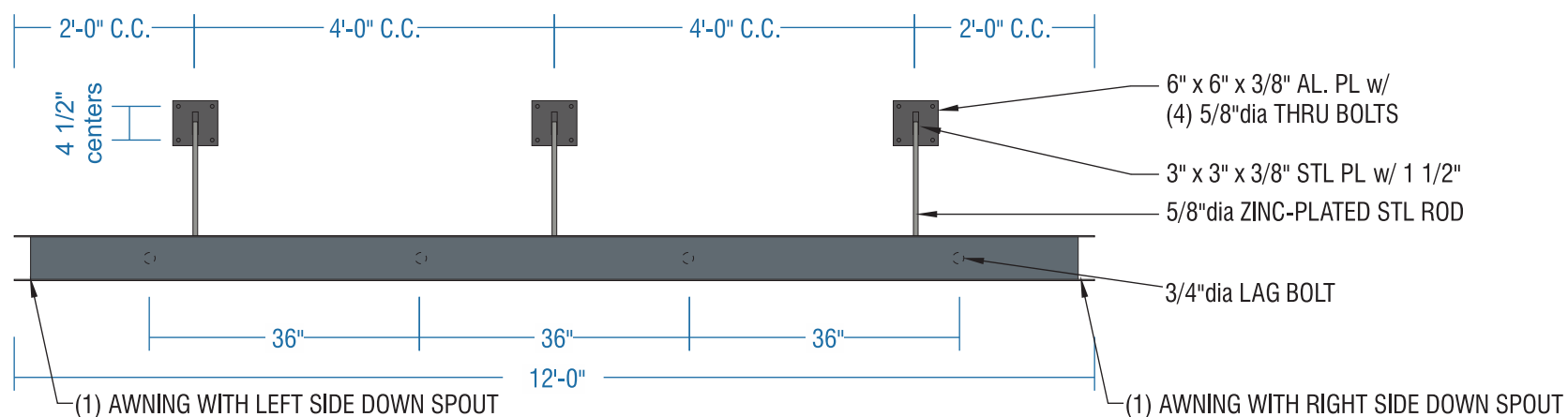
FL2701
2050 S US Hwy 1,
Fort Pierce, FL 34950

DRAWING NO:
1446915067.03
ARTIST: aaa DATE: 10/22/24
SHEET: 16 OF 18

METAL AWNING WITH RIDGE CAP

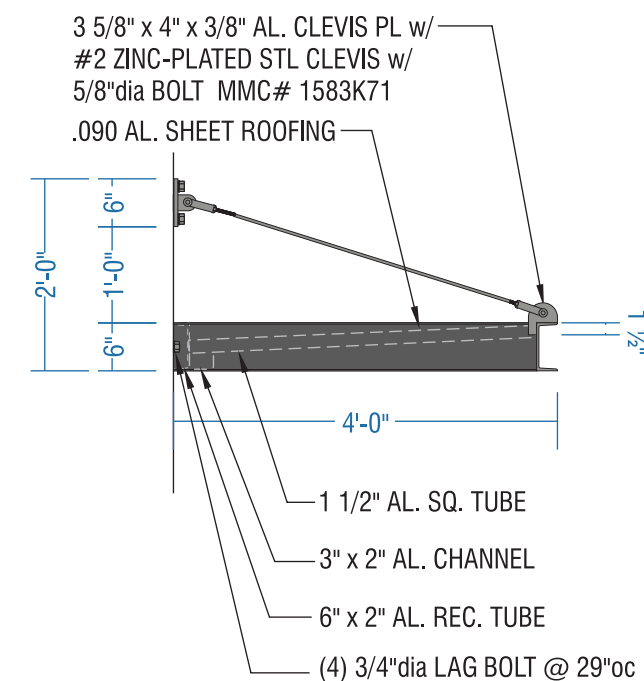
AWNING FRONT VIEW

SCALE: 1/2" = 1'-0"



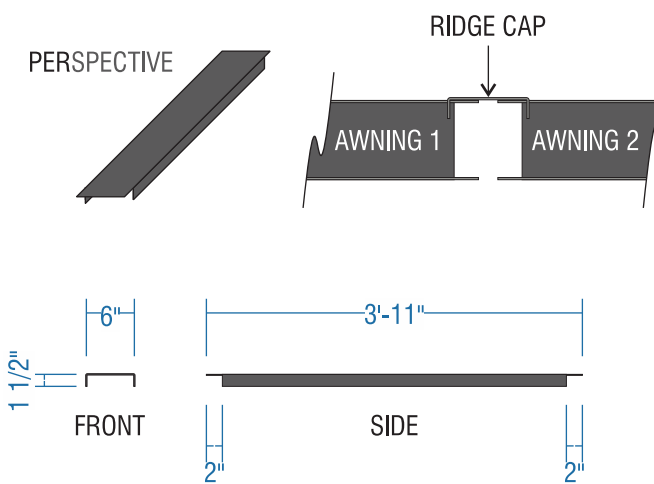
AWNING SIDE VIEW

SCALE: 1/2" = 1'-0"



RIDGE CAP (QTY. 1)

SCALE: 1/2" = 1'-0"



6" ALUMINUM C-CHANNEL FRONT & SIDES, WITH FLANGE POINTING OUT.

2" X 6" ALUMINUM REC. TUBE AT BACK OF CANOPY.

.090 ALUMINUM SHEET ROOFING MOUNTED INSIDE C-CHANNEL & DRAINAGE GUTTER CHANNEL SLOPED TOWARDS BUILDING.

TURNBUCKLES, 5/8" ZINC PLATED STEEL ROD SUPPORTS WITH #2 ZINC PLATED STEEL CLEVIS & PIN

ATTACHED TO 6" X 6" X 3/8" ALUMINUM PLATE/BRACKET AT WALL.

FABRICATED ALUMINUM .063 BREAK-FORMED RIDGE CAP FLASHING TO MOUNT WITH VHB & SILICONE OVER THE GAP BETWEEN CANOPIES.

PAINT ENTIRE AWNING, BRACKETS, SUPPORTS DB CUSTOM GREY.

INSTALLATION BY G.C.

CUMMINGS WILL ORGANIZE SHIPPING TO THE GC'S PREFERRED LOCATION ON DUTCH BROS SHIPPING ACCOUNT

COLOR CODE

■ DB DARK GREY
(PMS 431 C)

THIS IS AN ORIGINAL UNPUBLISHED DRAWING CREATED FOR YOUR PERSONAL USE IN CONNECTION WITH A PROJECT PLANNED FOR YOU BY CUMMINGS. IT IS NOT TO BE SHOWN OUTSIDE YOUR ORGANIZATION NOR USED, REPRODUCED, COPIED OR EXHIBITED IN ANY FASHION UNLESS AUTHORIZED IN WRITING BY AN OFFICER OF CUMMINGS.

CUSTOMER APPROVAL:

DATE:

Rev. #	DATE	BY
Rev. #1	11/22/24	aaaj
Rev. #2	12/17/24	aaaj
Rev. #3		

Rev. #	DATE	BY
Rev. #4		
Rev. #5		
Rev. #6		

FL2701
2050 S US Hwy 1,
Fort Pierce, FL 34950

DRAWING NO:
1446915067.03
ARTIST: aaa DATE: 10/22/24
SHEET: 17 OF 18

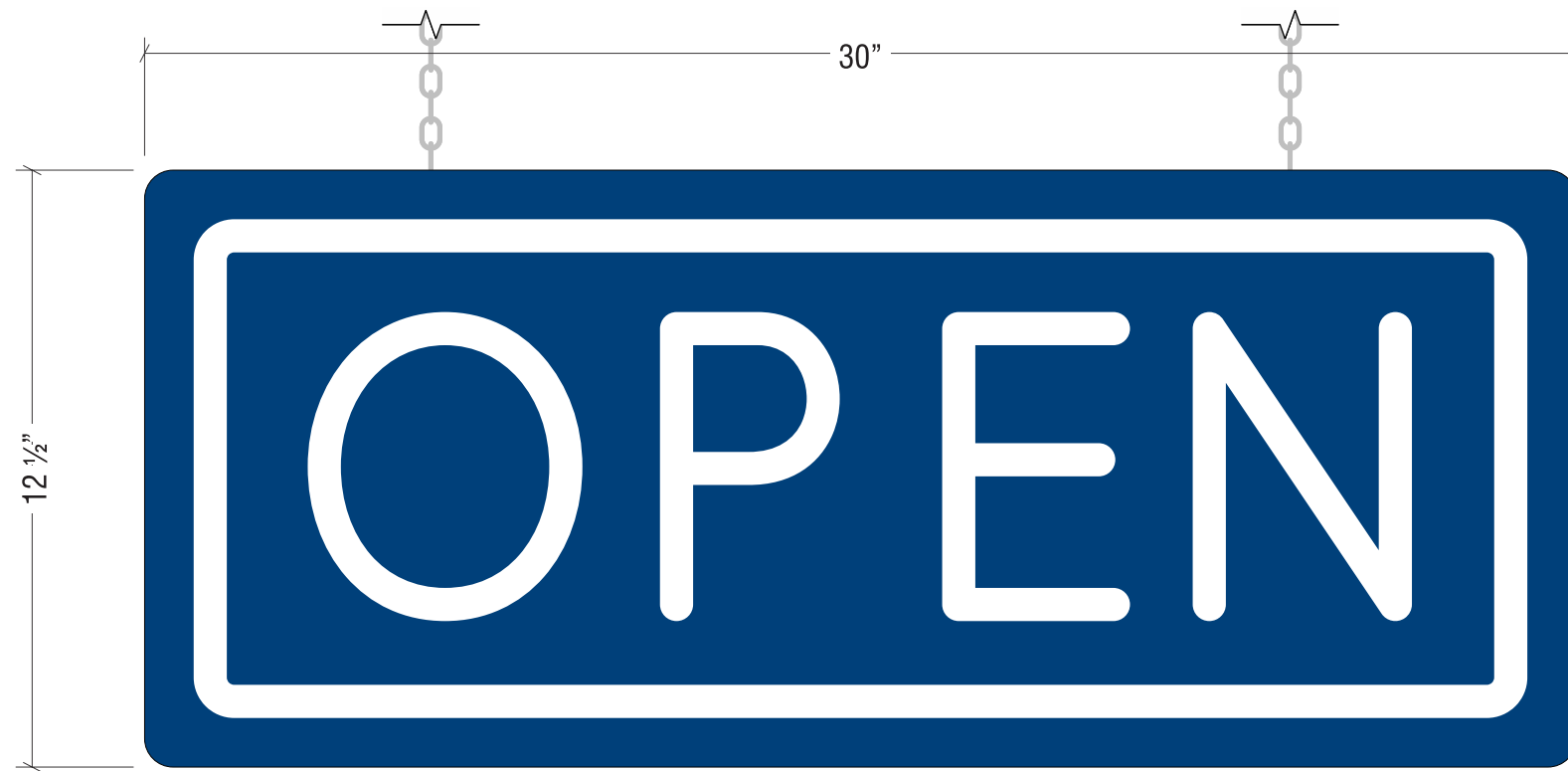


THIS DESIGN REMAINS OUR EXCLUSIVE PROPERTY AND CANNOT BE DUPLICATED WITHOUT WRITTEN CONSENT

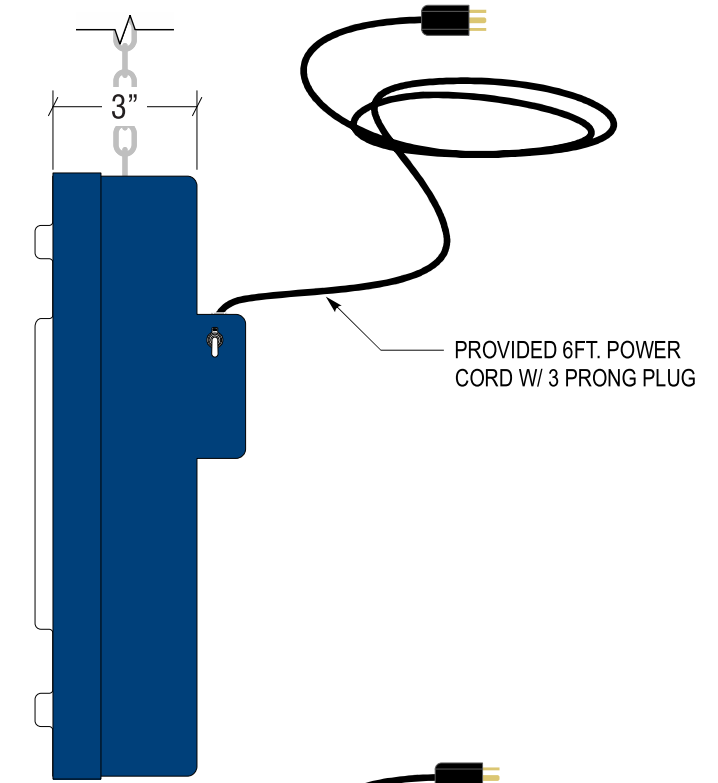
WINDOW OPEN SIGN

COLOR CODE

- WHITE LEXAN
- DB CUSTOM DARK BLUE



FRONT VIEW
SCALE: 3"=1'-0"



SIDE VIEW

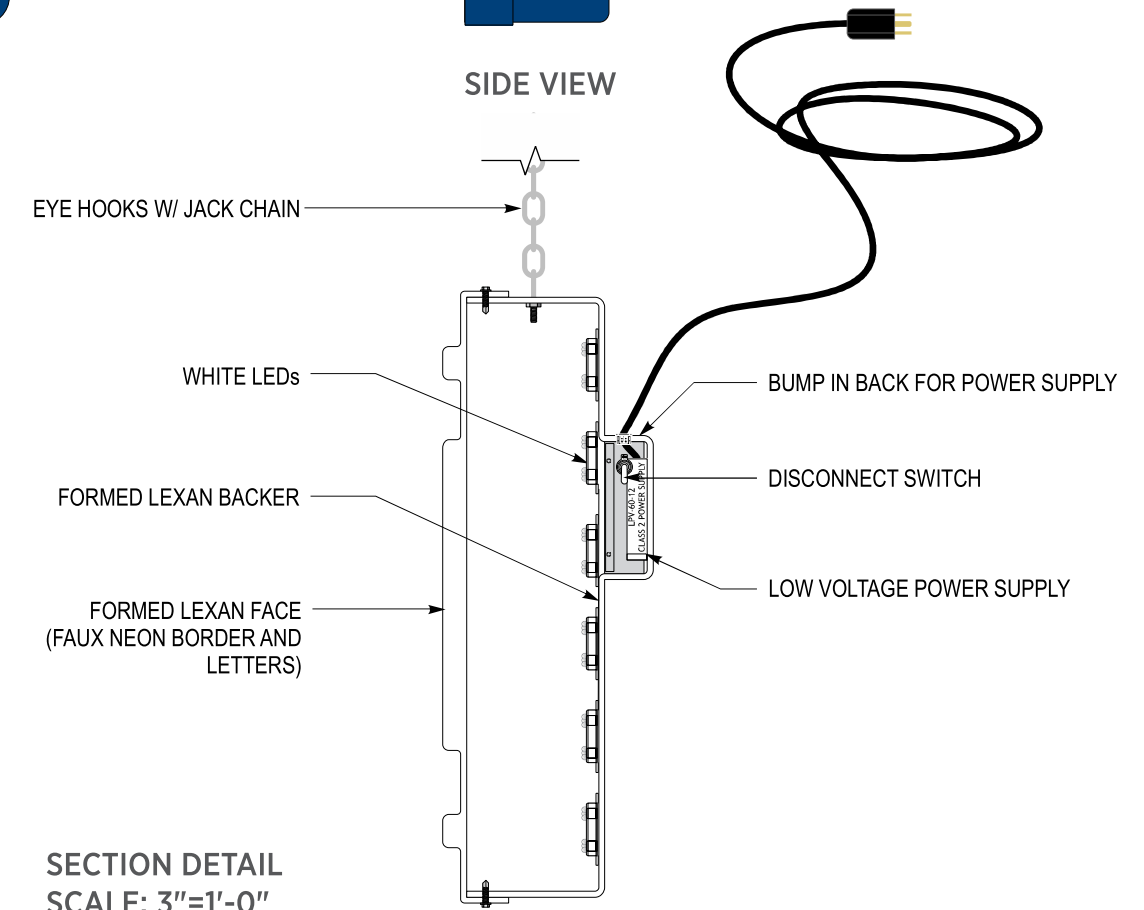
SPECIFICATIONS:

FORMED, EMBOSSED WHITE LEXAN FACE (OPEN & BORDER).
 ALL NEGATIVE SPACE PAINTED DB CUSTOM DARK BLUE.
 FORMED WHITE LEXAN BACKER CABINET
 PAINTED DB CUSTOM DARK BLUE.
 ILLUMINATE WITH WHITE LED'S.
 BUMP IN BACK FOR POWER SUPPLY & DISCONNECT SWITCH.
 INSTALL CENTERED INSIDE WINDOW WITH EYE HOOKS & CHAIN.
 INCLUDE 6FT POWER CORD WITH 3 PRONG PLUG.

This product is currently produced by Loren Signs in bulk and stored at DBHQ for distribution with the equipment package. Installation is by the GC.



NIGHT CONCEPT



SECTION DETAIL
SCALE: 3"=1'-0"



THIS IS AN ORIGINAL UNPUBLISHED DRAWING CREATED FOR YOUR PERSONAL USE IN CONNECTION WITH A PROJECT PLANNED FOR YOU BY CUMMINGS. IT IS NOT TO BE SHOWN OUTSIDE YOUR ORGANIZATION NOR USED, REPRODUCED, COPIED OR EXHIBITED IN ANY FASHION UNLESS AUTHORIZED IN WRITING BY AN OFFICER OF CUMMINGS.

CUSTOMER APPROVAL:

DATE: _____

Rev. #	DATE	BY
Rev. #1	11/22/24	aaaj
Rev. #2	12/17/24	aaaj
Rev. #3		

Rev. #	DATE	BY
Rev. #4		
Rev. #5		
Rev. #6		

FL2701
2050 S US Hwy 1,
Fort Pierce, FL 34950

DRAWING NO:
1446915067.03
 ARTIST: aaa DATE: 10/22/24
 SHEET: 18 OF 18