

JHI PROJECT # 2409-1533



JHI

Jeff H. Iravani, Inc.

Consulting Engineers

Civil • Structural • Traffic

1934 Commerce Lane, Suite 5 Jupiter, Florida 33458

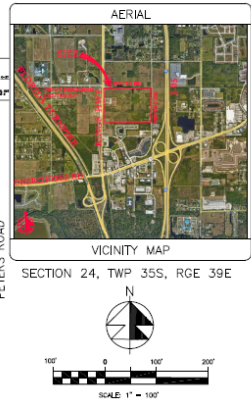
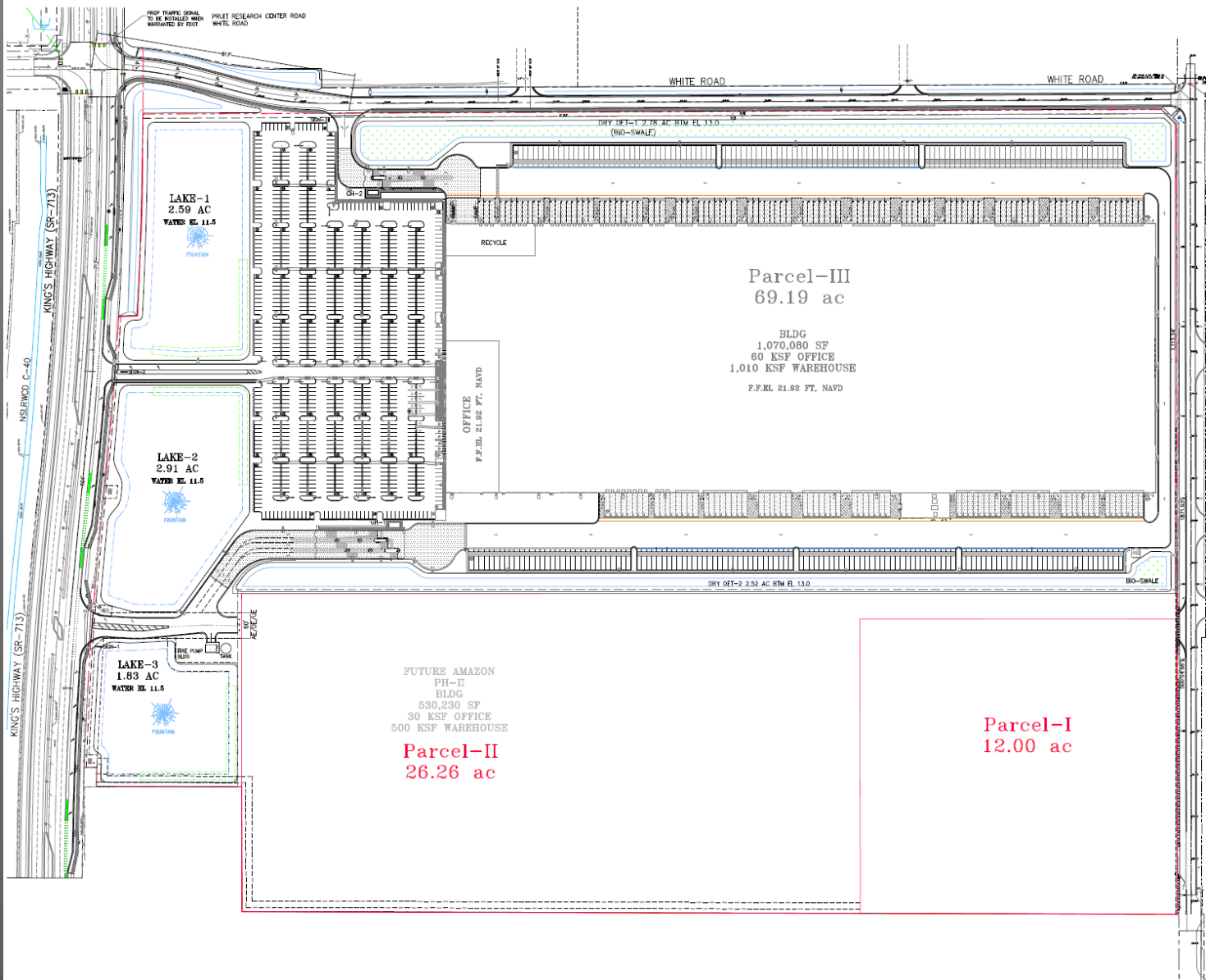
Tel: (561) 575-6030 Fax: (561) 575-6088

Email: JHI@JHIinc.com

Website: www.JHIinc.com



PROPOSED SITE PLAN



REVISIONS

REV PER	PP	CL/29/2025
REV PER	STY	02/19/2025
REV PER	FD	02/24/2025
REV PER	PP	03/19/2025
REV PER	PLA	04/14/2025

Jeff H. Iravani, Inc.
Consulting Engineers

134 COMMERCE LAKE, SUITE 5
FORT PIERCE, FLORIDA 3495
EMAIL: jh@jhir.com

TEL: (888) 275-8030
TEL: (888) 524-8686
WEBSITE: www.jhir.com

Amazon
Distribution Center
Shaw Highway Commerce Park
Parcel-II

Fort Pierce, Florida

MASTER SITE PLAN

DATE	SCALE	REVISED BY	DRAWN BY	APP. NO.
12/24/2025	1" = 100'	JH	DD	2409-1333

SEAL

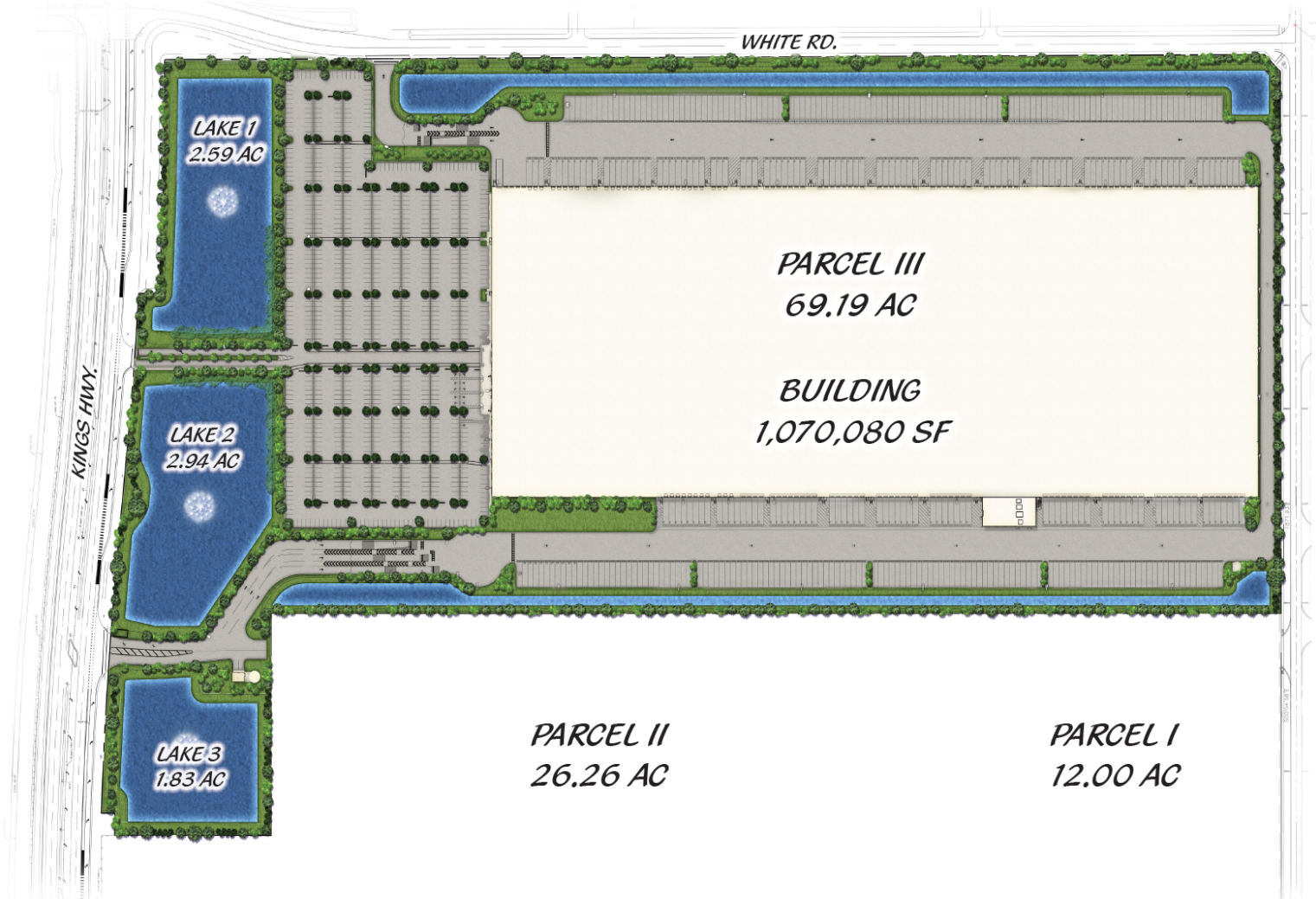
CSL 8588
SHEET NO.
MSP-1

COLORED LANDSCAPE PLAN



AMAZON DISTRIBUTION CENTER

Fort Pierce, Florida



North

BUILDING ELEVATION NORTH



RSP
RSP Architects, Ltd. | Qualifying Architect
480576
605 West 8th Street
Suite 100
Arlington, TX 76010
862.283.880
rsparch.com

CONSULTANTS
CERTIFICATION

CERTIFICATION

Project No. W. Start Fly
License No. A010001
Expiration Date 03/28/2027
Date Signed 03/22/2025
PROJECT FOR

**HFL1 - AMAZON
DISTRIBUTION CENTER**
2300 S Kings Hwy.
Fort Pierce, FL
34945



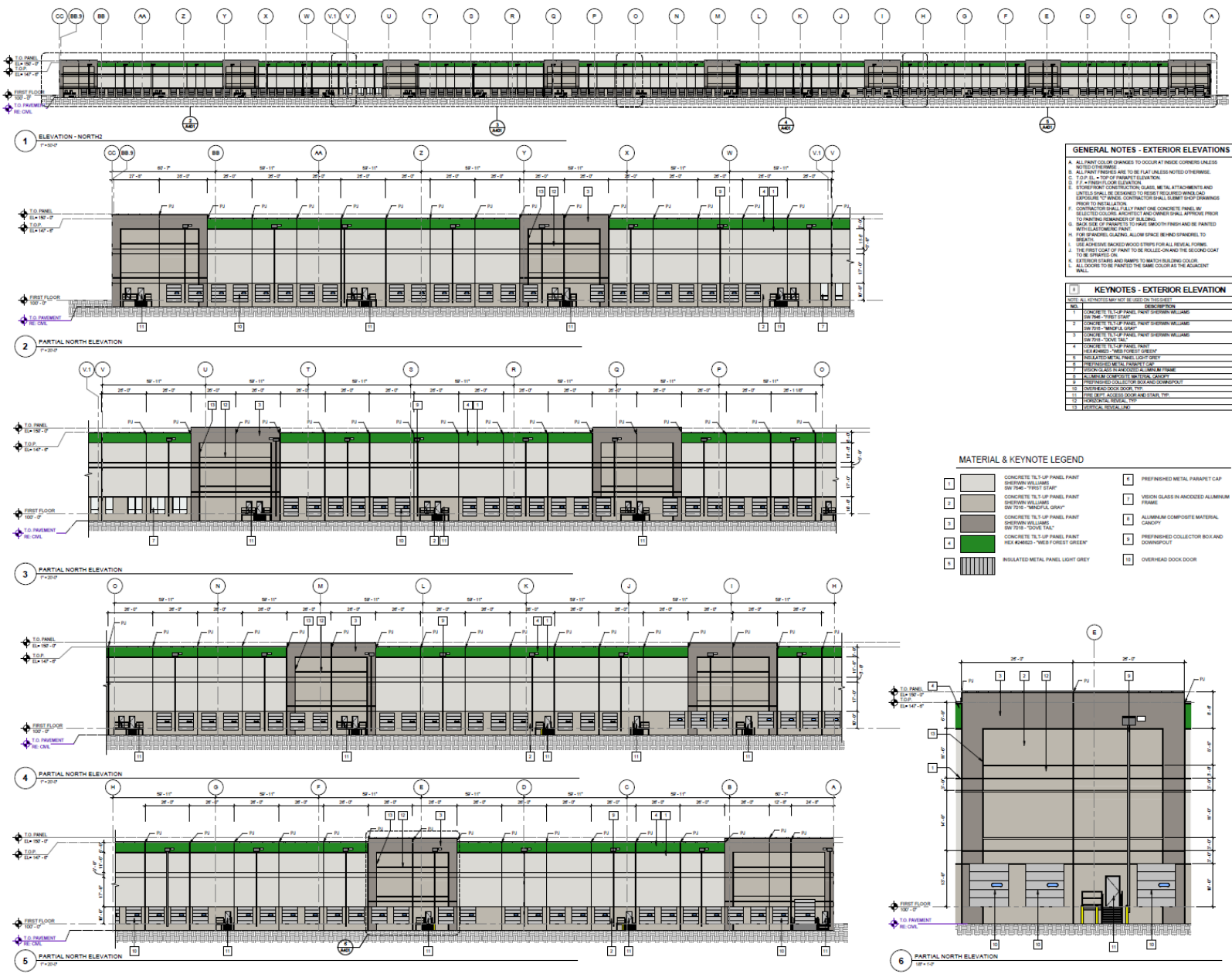
Project No. 2427.016.01
Drawn By: ABB/MS
Checked By: DH
Date: 03/19/25

ISSUES / REVISIONS

NO.	DATE	DESCRIPTION

EXTERIOR ELEVATION - NORTH

A401



GENERAL NOTES - EXTERIOR ELEVATIONS

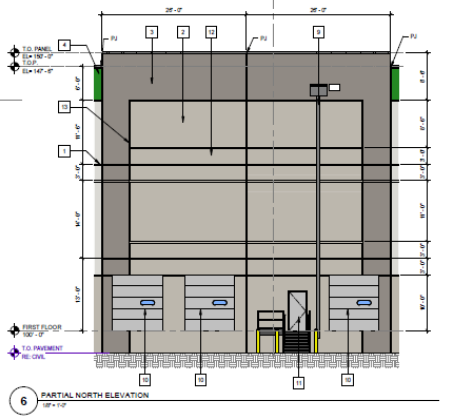
- ALL PAINT COULDS BE OWNED TO OCCUR AT THESE COORDINATES. DRESS NOTED OTHERWISE.
- ALL PAINT FINISHES ARE TO BE FLAT UNLESS NOTED OTHERWISE.
- T.O.P. EL. = TOP OF FINISH ELEVATION.
- E.F. = EXISTING FLOOR ELEVATION.
- STAIRS FROM CONTRACTOR SHALL BE MET. ATTACHMENTS AND UNITS SHALL BE DESIGNED TO RESIST REQUIRED WIND LOAD EXCEPT FOR SPECIAL CONTRACTOR SHALL SUBMIT SHOP DRAWINGS PRIOR TO INSTALLATION.
- CONTRACTOR SHALL PAINT ONE CONCRETE PANEL BY SELECTED COLOR. ARCHITECT AND OWNER SHALL APPROVE PRIOR TO FINISHING REMAINDER OF BUILDING.
- GRASS GRUBS OF FINISH TO BE PAINTED WITH ILAD FINISH PAINT.
- FOR SPACING GLAZING ALLOW SPACING BEHIND SPANDEL TO BREATHE.
- USE ADHESIVE BACKED WOOD STRIPS FOR ALL REVEAL FINISHES TO BE SPACED ON.
- EXTERIOR STRIPS ARE WARY TO MATCH EXISTING COLOR.
- ALL DOORS TO BE PAINTED THE SAME COLOR AS THE ADJACENT WALL.

KEYNOTES - EXTERIOR ELEVATION

NO.	DESCRIPTION
1	CONCRETE TILT-UP PANEL PAINT SHERWIN WILLIAMS SW 7040 - "PINE STAIR"
2	CONCRETE TILT-UP PANEL PAINT SHERWIN WILLIAMS SW 7030 - "WALNUT GRAY"
3	CONCRETE TILT-UP PANEL PAINT SHERWIN WILLIAMS SW 7030 - "DOVE TALK"
4	CONCRETE TILT-UP PANEL PAINT SHERWIN WILLIAMS SW 7030 - "DOVE TALK"
5	CONCRETE TILT-UP PANEL PAINT SHERWIN WILLIAMS SW 7030 - "DOVE TALK"
6	INSULATED METAL PANEL LIGHT GREY
7	PREFINISHED METAL PARAPET CAP
8	VISION GLAZING IN ANODIZED ALUMINUM FRAME
9	ALUMINUM COMPOSITE MATERIAL CANOPY
10	PREFINISHED COLLECTOR BOX AND DOWNPOUT
11	OVERHEAD DOCK DOOR

MATERIAL & KEYNOTE LEGEND

1	CONCRETE TILT-UP PANEL PAINT SHERWIN WILLIAMS SW 7040 - "PINE STAIR"	8	PREFINISHED METAL PARAPET CAP
2	CONCRETE TILT-UP PANEL PAINT SHERWIN WILLIAMS SW 7030 - "WALNUT GRAY"	9	VISION GLAZING IN ANODIZED ALUMINUM FRAME
3	CONCRETE TILT-UP PANEL PAINT SHERWIN WILLIAMS SW 7030 - "DOVE TALK"	10	ALUMINUM COMPOSITE MATERIAL CANOPY
4	CONCRETE TILT-UP PANEL PAINT SHERWIN WILLIAMS SW 7030 - "DOVE TALK"	11	PREFINISHED COLLECTOR BOX AND DOWNPOUT
5	CONCRETE TILT-UP PANEL PAINT SHERWIN WILLIAMS SW 7030 - "DOVE TALK"	12	OVERHEAD DOCK DOOR
6	INSULATED METAL PANEL LIGHT GREY		



BUILDING ELEVATION EAST



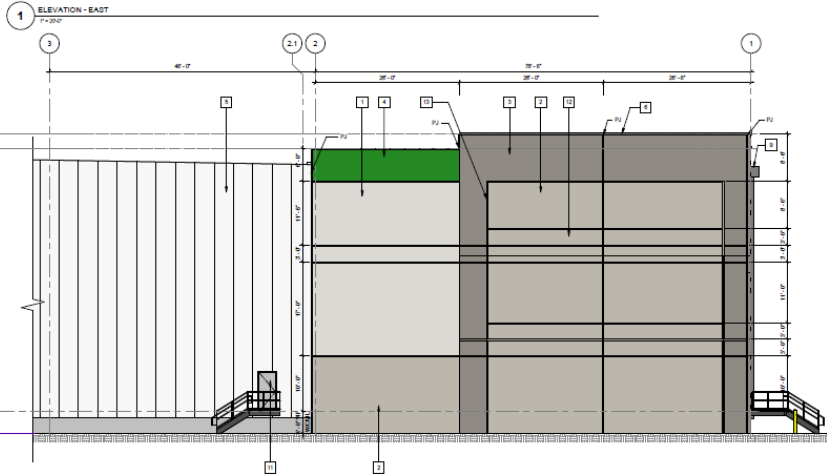
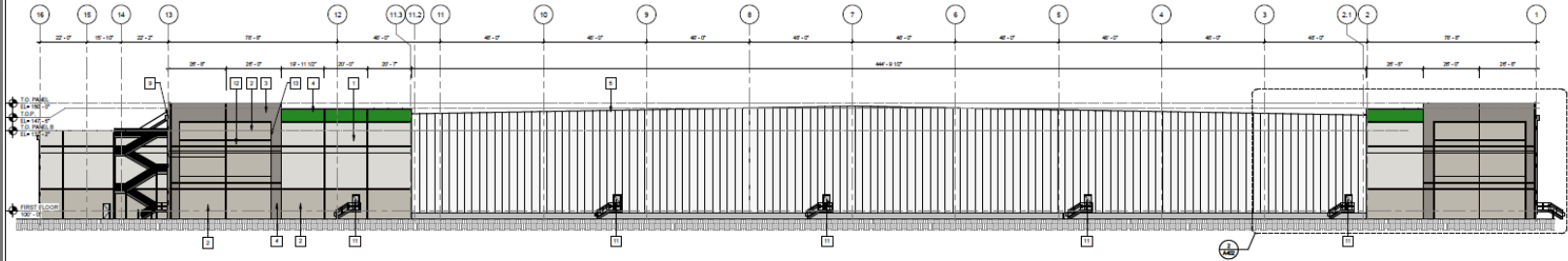
RSP

RSP Architects, Ltd | Qualifying Architect
 ADDRESS: 480 West 8th Street, Suite 100, Fort Worth, TX 76102
 TEL: 817.339.6900
 FAX: 817.339.6900
 www.rsparch.com

CONSULTANTS

CERTIFICATION

Name: M. Scott Fry
 License No.: AR 030551
 Registration Date: 02/09/2017
 Date Signed: 03/02/2025
 PROJECT FOR:



GENERAL NOTES - EXTERIOR ELEVATIONS

1. ALL PAINT COLOR CHANGES TO OCCUR AT THESE CORNERS UNLESS NOTED OTHERWISE.
2. ALL PAINT FINISHES ARE TO BE FLAT UNLESS NOTED OTHERWISE.
3. TO BE IN ACCORD WITH FINISH SCHEDULE.
4. TO BE IN ACCORD WITH FINISH SCHEDULE.
5. TO BE IN ACCORD WITH FINISH SCHEDULE.
6. TO BE IN ACCORD WITH FINISH SCHEDULE.
7. TO BE IN ACCORD WITH FINISH SCHEDULE.
8. TO BE IN ACCORD WITH FINISH SCHEDULE.
9. TO BE IN ACCORD WITH FINISH SCHEDULE.
10. TO BE IN ACCORD WITH FINISH SCHEDULE.
11. TO BE IN ACCORD WITH FINISH SCHEDULE.
12. TO BE IN ACCORD WITH FINISH SCHEDULE.
13. TO BE IN ACCORD WITH FINISH SCHEDULE.
14. TO BE IN ACCORD WITH FINISH SCHEDULE.
15. TO BE IN ACCORD WITH FINISH SCHEDULE.
16. TO BE IN ACCORD WITH FINISH SCHEDULE.

KEYNOTES - EXTERIOR ELEVATION

NO.	DESCRIPTION
1	CONCRETE TILT-UP PANEL PAINT (SHEWAN WALLINGS)
2	CONCRETE TILT-UP PANEL PAINT (SHEWAN WALLINGS)
3	CONCRETE TILT-UP PANEL PAINT (SHEWAN WALLINGS)
4	CONCRETE TILT-UP PANEL PAINT (SHEWAN WALLINGS)
5	CONCRETE TILT-UP PANEL PAINT (SHEWAN WALLINGS)
6	CONCRETE TILT-UP PANEL PAINT (SHEWAN WALLINGS)
7	CONCRETE TILT-UP PANEL PAINT (SHEWAN WALLINGS)
8	CONCRETE TILT-UP PANEL PAINT (SHEWAN WALLINGS)
9	CONCRETE TILT-UP PANEL PAINT (SHEWAN WALLINGS)
10	CONCRETE TILT-UP PANEL PAINT (SHEWAN WALLINGS)
11	CONCRETE TILT-UP PANEL PAINT (SHEWAN WALLINGS)
12	CONCRETE TILT-UP PANEL PAINT (SHEWAN WALLINGS)
13	CONCRETE TILT-UP PANEL PAINT (SHEWAN WALLINGS)
14	CONCRETE TILT-UP PANEL PAINT (SHEWAN WALLINGS)
15	CONCRETE TILT-UP PANEL PAINT (SHEWAN WALLINGS)
16	CONCRETE TILT-UP PANEL PAINT (SHEWAN WALLINGS)

MATERIAL & KEYNOTE LEGEND

- | | | | |
|----|--|---|--|
| 1 | CONCRETE TILT-UP PANEL PAINT (SHEWAN WALLINGS) | 4 | PRE-FINISHED METAL PARAPET CAP |
| 2 | CONCRETE TILT-UP PANEL PAINT (SHEWAN WALLINGS) | 5 | VISION GLASS IN ANODIZED ALUMINUM FRAME |
| 3 | CONCRETE TILT-UP PANEL PAINT (SHEWAN WALLINGS) | 6 | ALUMINUM COMPOSITE MATERIAL CANOPY |
| 4 | CONCRETE TILT-UP PANEL PAINT (SHEWAN WALLINGS) | 7 | PRE-FINISHED COLLECTOR BOX AND DOWNSPOUT |
| 5 | CONCRETE TILT-UP PANEL PAINT (SHEWAN WALLINGS) | 8 | OVERHEAD DOOR DOOR |
| 6 | CONCRETE TILT-UP PANEL PAINT (SHEWAN WALLINGS) | | |
| 7 | CONCRETE TILT-UP PANEL PAINT (SHEWAN WALLINGS) | | |
| 8 | CONCRETE TILT-UP PANEL PAINT (SHEWAN WALLINGS) | | |
| 9 | CONCRETE TILT-UP PANEL PAINT (SHEWAN WALLINGS) | | |
| 10 | CONCRETE TILT-UP PANEL PAINT (SHEWAN WALLINGS) | | |
| 11 | CONCRETE TILT-UP PANEL PAINT (SHEWAN WALLINGS) | | |
| 12 | CONCRETE TILT-UP PANEL PAINT (SHEWAN WALLINGS) | | |
| 13 | CONCRETE TILT-UP PANEL PAINT (SHEWAN WALLINGS) | | |
| 14 | CONCRETE TILT-UP PANEL PAINT (SHEWAN WALLINGS) | | |
| 15 | CONCRETE TILT-UP PANEL PAINT (SHEWAN WALLINGS) | | |
| 16 | CONCRETE TILT-UP PANEL PAINT (SHEWAN WALLINGS) | | |

**HFL1 - AMAZON
 DISTRIBUTION CENTER**
 2300 S Kings Hwy.
 Fort Pierce, FL
 34945



Project No.: 3677.016.01
 Drawn By: ABE/RMC
 Checked By: BFI
 Date: 03/19/25

ISSUES / REVISIONS

NO.	DATE	DESCRIPTION

EXTERIOR ELEVATION - EAST

A402

BUILDING ELEVATION SOUTH



RSP

RSP Architects, Ltd. | Qualifying Architect
 ADDRESS: 604 West 85 Street, Suite 100
 Fort Worth, TX 76102 | 817.266.6666
 rsp@rsp.com

CONSULTANTS:

CERTIFICATION:

Name: W. Scott Fry
 License No.: AR000019
 Expiration Date: 03/03/2027
 Date Signed: 03/01/2024

**HFL1 - AMAZON
 DISTRIBUTION CENTER**
 2300 S Kings Hwy.,
 Fort Pierce, FL
 34945



Project No.: 2307.015.01
 Drawn By: ABE/NMS
 Checked By: BE
 Date: 03/10/24

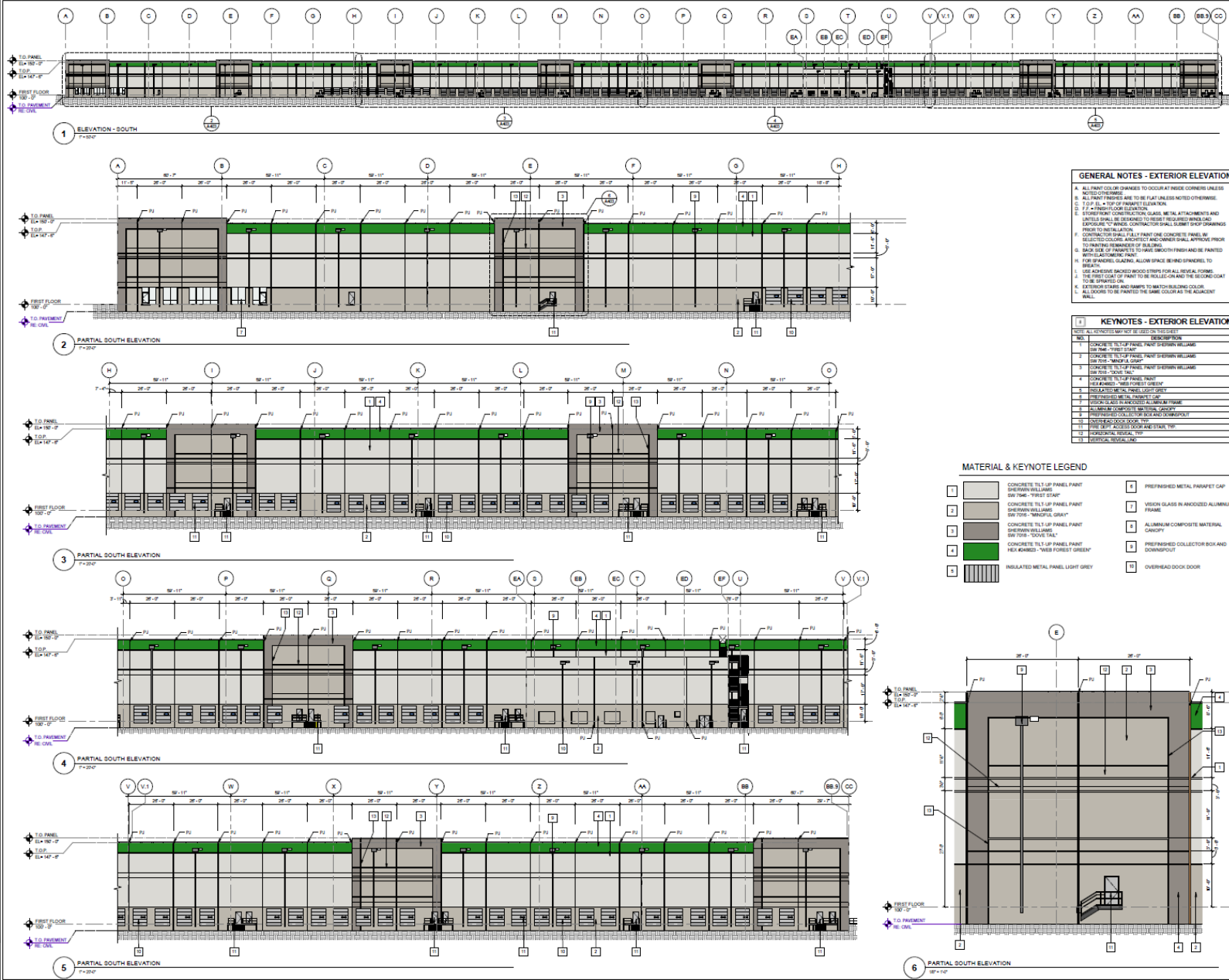
NOTES: The design, layout and details are the property of RSP Architects, Ltd. and are not to be used, copied, reproduced, or otherwise disclosed without the written consent of RSP Architects, Ltd. All rights reserved. This drawing is the property of RSP Architects, Ltd. and is not to be used, copied, reproduced, or otherwise disclosed without the written consent of RSP Architects, Ltd. All rights reserved.

ISSUES / REVISIONS

NO.	DATE	DESCRIPTION

EXTERIOR ELEVATION - SOUTH

A403



GENERAL NOTES - EXTERIOR ELEVATIONS

1. ALL FINISH COLOR CHANGES TO OCCUR AT THESE CORNERS UNLESS NOTED OTHERWISE.
2. ALL FINISH FINISHES ARE TO BE FLAT UNLESS NOTED OTHERWISE.
3. TYPICAL FINISHES TO BE USED UNLESS NOTED OTHERWISE.
4. F.F. = FINISH FLOOR ELEVATION.
5. EQUIPMENT FRAME CONSTRUCTION GLASS, METAL ATTACHMENTS AND UNTILTS SHALL BE DESIGNED TO RESIST REQUIRED WIND LOAD EXCEPT TO FINISH CONTRACTOR SHALL SUBMIT SHOP DRAWINGS FROM THE MANUFACTURER.
6. CONTRACTOR SHALL FULLY FINISH ONE CONCRETE PANEL BY SELECTING COLORS, ARCHITECT AND FINISH CONTRACTOR APPROVE PRIOR TO FINISHING REMAINDER OF BUILDING.
7. BACK SIDE OF PANELS TO BE SMOOTH FINISH AND BE PAINTED WITH ELECTROSTATIC PAINT.
8. FOR SPANDREL GLAZING ALLOW SPACE BEHIND SPANDREL TO BE OPEN.
9. USE ADHESIVE BACKED WOOD STRIPS FOR ALL REVEAL JOINTS. THE REVEAL JOINT OF PAINT TO BE POLISHED AND THE BACKGROUND TO BE SPARTAN ON.
10. EXTERIOR STAIRS AND RAMPS TO MATCH BUILDING COLOR.
11. ALL COLORS TO BE PAINTED THE SAME COLOR AS THE ADJACENT WALL.

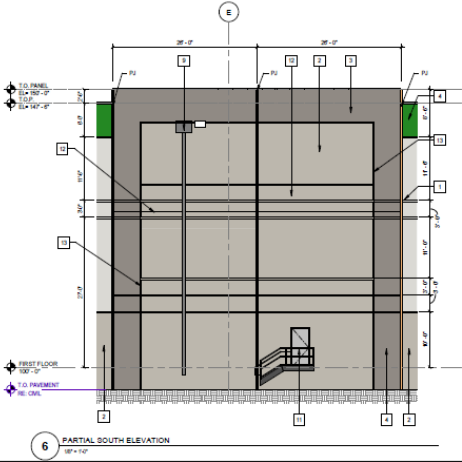
KEYNOTES - EXTERIOR ELEVATION

NOTE: ALL KEYNOTES MAY NOT BE USED TO THE GREY.

NO.	DESCRIPTION
1	CONCRETE TILT-UP PANEL PAINT (BETWEEN WELLS) SW 7046 "FIRST STAIR"
2	CONCRETE TILT-UP PANEL PAINT (BETWEEN WELLS) SW 7046 "FIRST STAIR"
3	CONCRETE TILT-UP PANEL PAINT (BETWEEN WELLS) SW 7046 "FIRST STAIR"
4	CONCRETE TILT-UP PANEL PAINT (BETWEEN WELLS) SW 7046 "FIRST STAIR"
5	CONCRETE TILT-UP PANEL PAINT (BETWEEN WELLS) SW 7046 "FIRST STAIR"
6	PRE-FINISHED METAL PANEL CAP
7	VISION GLASS IN ANODIZED ALUMINUM FRAME
8	ALUMINUM COMPOSITE MATERIAL CANOPY
9	PRE-FINISHED COLLECTOR BOX AND DOWNPOUT
10	OVERHEAD DOOR DOOR

MATERIAL & KEYNOTE LEGEND

1	CONCRETE TILT-UP PANEL PAINT (BETWEEN WELLS) SW 7046 "FIRST STAIR"	1	PRE-FINISHED METAL PANEL CAP
2	CONCRETE TILT-UP PANEL PAINT (BETWEEN WELLS) SW 7046 "FIRST STAIR"	7	VISION GLASS IN ANODIZED ALUMINUM FRAME
3	CONCRETE TILT-UP PANEL PAINT (BETWEEN WELLS) SW 7046 "FIRST STAIR"	8	ALUMINUM COMPOSITE MATERIAL CANOPY
4	CONCRETE TILT-UP PANEL PAINT (BETWEEN WELLS) SW 7046 "FIRST STAIR"	9	PRE-FINISHED COLLECTOR BOX AND DOWNPOUT
5	CONCRETE TILT-UP PANEL PAINT (BETWEEN WELLS) SW 7046 "FIRST STAIR"	10	OVERHEAD DOOR DOOR
6	INSULATED METAL PANEL LIGHT GREY		



BUILDING ELEVATION WEST



RSP

RSP Architects, Ltd. | Qualifying Architect
 ARCHITECT
 463.588.0360
 463.588.0360
 463.588.0360

CONSULTANTS

CERTIFICATION

Name: W. Scott Ray
 License No.: 4615555
 Expiration Date: 03/31/2027
 Date Signed: 09/22/2025

PROJECT FOR

**HFL1 - AMAZON
 DISTRIBUTION CENTER**
 2300 S Kings Hwy.
 Fort Pierce, FL
 34945

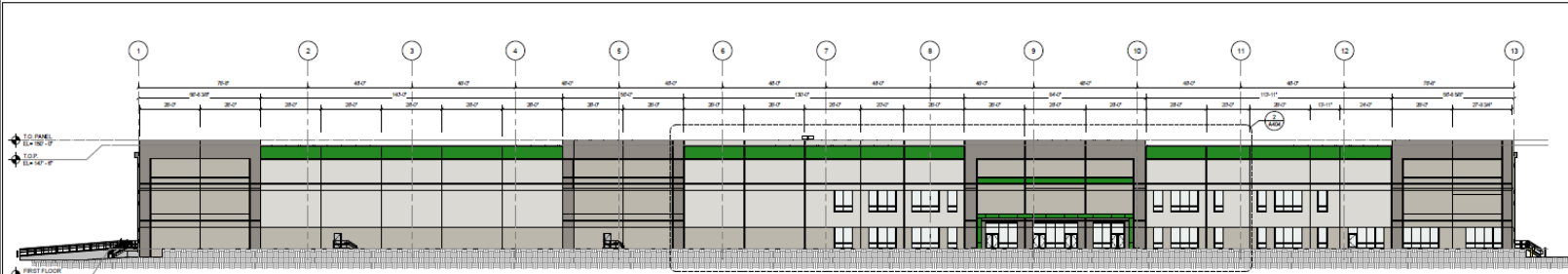


Project No.: 2427.016.01
 Drawn By: ABB/KMS
 Checked By: BH
 Date: 09/19/25

ISSUES / REVISIONS
 NO. DATE DESCRIPTION

EXTERIOR
 ELEVATION - WEST

A404



1 ELEVATION - WEST
 7'-0" x 210'

MATERIAL & KEYNOTE LEGEND

- | | | | |
|---|--|----|--|
| 1 | CONCRETE TILT UP PANEL PAINT
SHERMAN WILLIAMS
SW TONE - "FIRST STAR" | 1 | PREFINISHED METAL PARAPET CAP |
| 2 | CONCRETE TILT UP PANEL PAINT
SHERMAN WILLIAMS
SW TONE - "MID-CL GLOSS" | 7 | VISION GLASS IN ANODIZED ALUMINUM
FRAME |
| 3 | CONCRETE TILT UP PANEL PAINT
SHERMAN WILLIAMS
SW TONE - "DOVE TIL" | 8 | ALUMINUM COMPOSITE MATERIAL
CANOPY |
| 4 | CONCRETE TILT UP PANEL PAINT
"KEYWAYED" - "MID FOREST GREEN" | 9 | PREFINISHED COLLECTOR BOX AND
DOWNSPOUT |
| 5 | INSULATED METAL PANEL LIGHT GREY | 10 | OVERHEAD DOOR DOOR |

GENERAL NOTES - EXTERIOR ELEVATIONS

- A. ALL PAINT COLOR CHANGES TO OCCUR AT INNER CORNERS UNLESS NOTED OTHERWISE.
- B. ALL PAINT FINISHES ARE TO BE FLAT UNLESS NOTED OTHERWISE.
- C. T.O.P. EL. = TOP OF PARAPET SECTION.
- D. IF A FINISH IS NOT SPECIFIED, THE FINISH SHALL BE DESIGNED TO BEST REPRESENT THE APPEARANCE OF THE MATERIAL.
- E. STONE/PARTI CONSTRUCTION GLASS, METAL ATTACHMENTS AND UNITS SHALL BE DESIGNED TO BEST REPRESENT THE APPEARANCE OF THE MATERIAL.
- F. EXPOSURE TO WINDS: CONTRACTOR SHALL SUBMIT SHOP DRAWINGS PRIOR TO INSTALLATION. PAINT USE CONCRETE PANEL BY SELECTED COLOR. ARCHITECT AND OWNER SHALL APPROVE PRIOR TO ANY RESUBMISSION OF SUBMIT.
- G. BACK SIDE OF FINISHES TO HAVE SMOOTH FINISH AND BE PAINTED WITH AN EXTERIOR GRADE PAINT.
- H. FOR SPREADS GLAZING, ALLOW SPACE BETWEEN SPANDRILS TO BE 1/8" MAX.
- I. THE FIRST COAT OF PAINT TO BE ROLLED-ON AND THE SECOND COAT TO BE SPRAYED-ON.
- J. EXTERIOR STAIRS AND RAMPS TO MATCH BUILDING COLOR.
- K. ALL DOORS TO BE PAINTED THE SAME COLOR AS THE ADJACENT WALL.

KEYNOTES - EXTERIOR ELEVATION

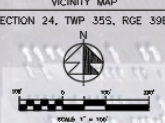
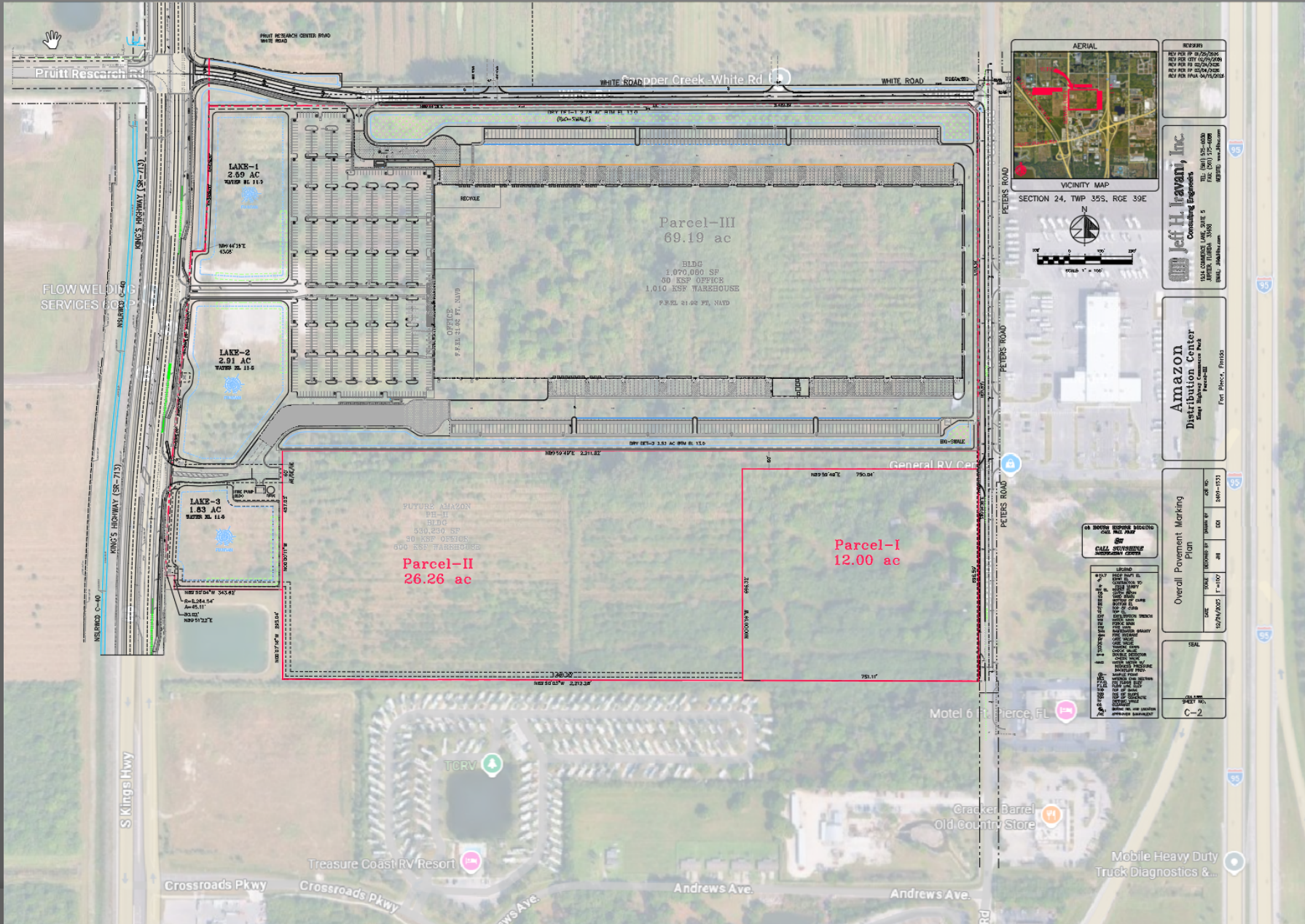
NOTE: ALL KEYNOTES MAY NOT BE USED ON THIS SHEET.

KEY	DESCRIPTION
1	CONCRETE TILT UP PANEL PAINT SHERMAN WILLIAMS SW TONE - "FIRST STAR"
2	CONCRETE TILT UP PANEL PAINT SHERMAN WILLIAMS SW TONE - "MID-CL GLOSS"
3	CONCRETE TILT UP PANEL PAINT SHERMAN WILLIAMS SW TONE - "DOVE TIL"
4	CONCRETE TILT UP PANEL PAINT "KEYWAYED" - "MID FOREST GREEN"
5	INSULATED METAL PANEL LIGHT GREY
6	PREFINISHED METAL PARAPET CAP
7	VISION GLASS IN ANODIZED ALUMINUM FRAME
8	ALUMINUM COMPOSITE MATERIAL CANOPY
9	PREFINISHED COLLECTOR BOX AND DOWNSPOUT
10	OVERHEAD DOOR DOOR
11	VERTICAL REVEALING



2 PARTIAL WEST ELEVATION
 18' x 110'

SITE AERIAL



REV#393
REV 10/11/2020
REV 08/07/2020
REV 07/20/2020
REV 07/06/2020
REV 06/04/2020
REV 05/19/2020

Jeff H. Iravani, Inc.
Consulting Engineers
100 S. COMMERCE
APRILE, ILLINOIS 61701
TEL: (312) 375-4000
FAX: (312) 375-4008
EMAIL: jh@jhir.com

Amazon
Distribution Center
Small Highway Construction Park
Phase-III
Fort Pierce, Florida

Overall Placement Marking Plan

DATE	SCALE	REVISION #	BY	CHK	APP	DATE
10/27/2021	1"=100'	1	JH	CD	JH	08/07-03/21

SEAL

C-2

- ALL SYMBOLS SHOWN BEING USED ON THIS PLAN**
- CALL OUTS REFER TO SUBSEQUENT SHEETS**
- 1.00' - 1.00' - 1.00' - 1.00'
 - 2.00' - 2.00' - 2.00' - 2.00'
 - 3.00' - 3.00' - 3.00' - 3.00'
 - 4.00' - 4.00' - 4.00' - 4.00'
 - 5.00' - 5.00' - 5.00' - 5.00'
 - 6.00' - 6.00' - 6.00' - 6.00'
 - 7.00' - 7.00' - 7.00' - 7.00'
 - 8.00' - 8.00' - 8.00' - 8.00'
 - 9.00' - 9.00' - 9.00' - 9.00'
 - 10.00' - 10.00' - 10.00' - 10.00'
 - 11.00' - 11.00' - 11.00' - 11.00'
 - 12.00' - 12.00' - 12.00' - 12.00'
 - 13.00' - 13.00' - 13.00' - 13.00'
 - 14.00' - 14.00' - 14.00' - 14.00'
 - 15.00' - 15.00' - 15.00' - 15.00'
 - 16.00' - 16.00' - 16.00' - 16.00'
 - 17.00' - 17.00' - 17.00' - 17.00'
 - 18.00' - 18.00' - 18.00' - 18.00'
 - 19.00' - 19.00' - 19.00' - 19.00'
 - 20.00' - 20.00' - 20.00' - 20.00'
 - 21.00' - 21.00' - 21.00' - 21.00'
 - 22.00' - 22.00' - 22.00' - 22.00'
 - 23.00' - 23.00' - 23.00' - 23.00'
 - 24.00' - 24.00' - 24.00' - 24.00'
 - 25.00' - 25.00' - 25.00' - 25.00'
 - 26.00' - 26.00' - 26.00' - 26.00'
 - 27.00' - 27.00' - 27.00' - 27.00'
 - 28.00' - 28.00' - 28.00' - 28.00'
 - 29.00' - 29.00' - 29.00' - 29.00'
 - 30.00' - 30.00' - 30.00' - 30.00'
 - 31.00' - 31.00' - 31.00' - 31.00'
 - 32.00' - 32.00' - 32.00' - 32.00'
 - 33.00' - 33.00' - 33.00' - 33.00'
 - 34.00' - 34.00' - 34.00' - 34.00'
 - 35.00' - 35.00' - 35.00' - 35.00'
 - 36.00' - 36.00' - 36.00' - 36.00'
 - 37.00' - 37.00' - 37.00' - 37.00'
 - 38.00' - 38.00' - 38.00' - 38.00'
 - 39.00' - 39.00' - 39.00' - 39.00'
 - 40.00' - 40.00' - 40.00' - 40.00'
 - 41.00' - 41.00' - 41.00' - 41.00'
 - 42.00' - 42.00' - 42.00' - 42.00'
 - 43.00' - 43.00' - 43.00' - 43.00'
 - 44.00' - 44.00' - 44.00' - 44.00'
 - 45.00' - 45.00' - 45.00' - 45.00'
 - 46.00' - 46.00' - 46.00' - 46.00'
 - 47.00' - 47.00' - 47.00' - 47.00'
 - 48.00' - 48.00' - 48.00' - 48.00'
 - 49.00' - 49.00' - 49.00' - 49.00'
 - 50.00' - 50.00' - 50.00' - 50.00'
 - 51.00' - 51.00' - 51.00' - 51.00'
 - 52.00' - 52.00' - 52.00' - 52.00'
 - 53.00' - 53.00' - 53.00' - 53.00'
 - 54.00' - 54.00' - 54.00' - 54.00'
 - 55.00' - 55.00' - 55.00' - 55.00'
 - 56.00' - 56.00' - 56.00' - 56.00'
 - 57.00' - 57.00' - 57.00' - 57.00'
 - 58.00' - 58.00' - 58.00' - 58.00'
 - 59.00' - 59.00' - 59.00' - 59.00'
 - 60.00' - 60.00' - 60.00' - 60.00'
 - 61.00' - 61.00' - 61.00' - 61.00'
 - 62.00' - 62.00' - 62.00' - 62.00'
 - 63.00' - 63.00' - 63.00' - 63.00'
 - 64.00' - 64.00' - 64.00' - 64.00'
 - 65.00' - 65.00' - 65.00' - 65.00'
 - 66.00' - 66.00' - 66.00' - 66.00'
 - 67.00' - 67.00' - 67.00' - 67.00'
 - 68.00' - 68.00' - 68.00' - 68.00'
 - 69.00' - 69.00' - 69.00' - 69.00'
 - 70.00' - 70.00' - 70.00' - 70.00'
 - 71.00' - 71.00' - 71.00' - 71.00'
 - 72.00' - 72.00' - 72.00' - 72.00'
 - 73.00' - 73.00' - 73.00' - 73.00'
 - 74.00' - 74.00' - 74.00' - 74.00'
 - 75.00' - 75.00' - 75.00' - 75.00'
 - 76.00' - 76.00' - 76.00' - 76.00'
 - 77.00' - 77.00' - 77.00' - 77.00'
 - 78.00' - 78.00' - 78.00' - 78.00'
 - 79.00' - 79.00' - 79.00' - 79.00'
 - 80.00' - 80.00' - 80.00' - 80.00'
 - 81.00' - 81.00' - 81.00' - 81.00'
 - 82.00' - 82.00' - 82.00' - 82.00'
 - 83.00' - 83.00' - 83.00' - 83.00'
 - 84.00' - 84.00' - 84.00' - 84.00'
 - 85.00' - 85.00' - 85.00' - 85.00'
 - 86.00' - 86.00' - 86.00' - 86.00'
 - 87.00' - 87.00' - 87.00' - 87.00'
 - 88.00' - 88.00' - 88.00' - 88.00'
 - 89.00' - 89.00' - 89.00' - 89.00'
 - 90.00' - 90.00' - 90.00' - 90.00'
 - 91.00' - 91.00' - 91.00' - 91.00'
 - 92.00' - 92.00' - 92.00' - 92.00'
 - 93.00' - 93.00' - 93.00' - 93.00'
 - 94.00' - 94.00' - 94.00' - 94.00'
 - 95.00' - 95.00' - 95.00' - 95.00'
 - 96.00' - 96.00' - 96.00' - 96.00'
 - 97.00' - 97.00' - 97.00' - 97.00'
 - 98.00' - 98.00' - 98.00' - 98.00'
 - 99.00' - 99.00' - 99.00' - 99.00'
 - 100.00' - 100.00' - 100.00' - 100.00'

FRONT RENDERING



LEFT RENDERING



RIGHT RENDERING

