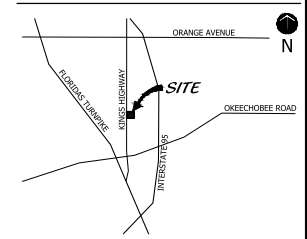


MATCHLINE SEE SHEET 8

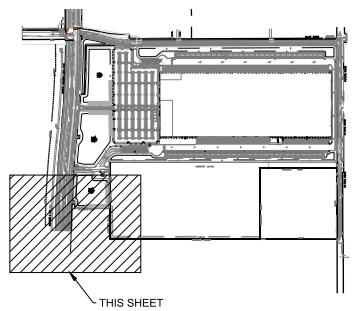
LOCATION MAP



PH-II BLDG
530,230 SF
30 KSF OFFICE
500 KSF WAREHOUSE

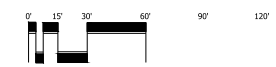
MATCHLINE SEE SHEET 2

SHEET LAYOUT MAP



48 HOURS BEFORE DIGGING
CALL TOLL FREE
811
SUNSHINE STATE ONE CALL
OF FLORIDA, INC.

Landscape Plan



Scale: 1" = 30'-0"



North

Coteur & Hearing
Landscape Architects
Land Planners
Environmental Consultants
1934 Commerce Lane
Suite 1
Jupiter, Florida 33458
561.747.6338 • Fax 561.747.1377
www.coteurhearing.com
Lic# LC-26000535

Amazon Distribution Center
Landscape Plan
City of Fort Pierce, Florida

Digitally signed
by Gregg Byrick
Date:
2026.03.09
16:01:12 -04'00'



DESIGNED	GB
DRAWN	GB
APPROVED	GB
JOB NUMBER	25-1202
DATE	12/2/25
REVISIONS	02/24/26
	03/09/26

December 15, 2025 12:48:03 p.m.
Drawing: 24-1112 LP.DWG

SHEET 2 of 14
COTEUR & HEARING, INC.
These drawings are the property of the architect and are not to be used for any other project without the written consent of the architect. The architect shall not be held responsible for any errors or omissions in these drawings. The architect shall not be held responsible for any damages to the architect.

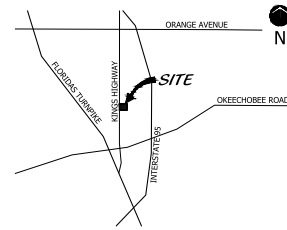
MATCHLINE SEE SHEET 7

PH-II BLDG
530,230 SF
30 KSF OFFICE
500 KSF WAREHOUSE

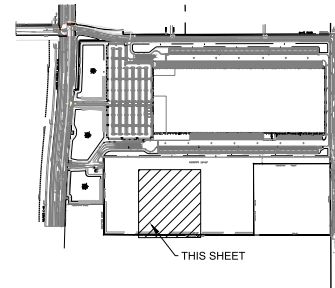
MATCHLINE SEE SHEET 1

MATCHLINE SEE SHEET 3

LOCATION MAP



SHEET LAYOUT MAP



Landscape Plan

48 HOURS BEFORE DIGGING
CALL TOLL FREE
811
SUNSHINE STATE ONE CALL
OF FLORIDA, INC.



1,461.20'
N89°50'03"W 2,212.2'



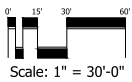
Coteur & Hearing

Landscape Architects
Land Planners
Environmental Consultants
1934 Commerce Lane
Suite 1
Jupiter, Florida 33458
561.747.6336 • Fax 561.747.1377
www.coteurhearing.com
Lic# LC-26000535

Amazon Distribution Center
Landscape Plan
City of Fort Pierce, Florida

Gregg
Byrick

Digitally signed
by Gregg Byrick
Date: 2025.03.09
16:01:46 -04'00'



DESIGNED	GB
DRAWN	VM
APPROVED	GB
JOB NUMBER	25-1202
DATE	12/2/25
REVISIONS	02/24/26
	03/09/26

December 15, 2025 12:48:03 p.m.
Drawing: 24-1112 LP.DWG

SHEET 3 of 14

© COTEUR & HEARING, INC.
These drawings are the property of the architect and as
they represent the responsibility of a professional engineer
as required by statute, they are not to be used, reproduced,
copied or disseminated in any way without the written
consent of the architect.

MATCHLINE SEE SHEET 2

MATCHLINE SEE SHEET 6

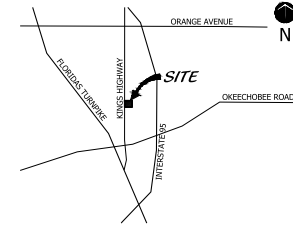
PARCEL II
26.36 AC

PARCEL I
12.00 AC

696.32'

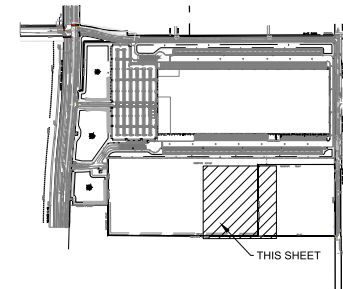
N00°00'16"W

LOCATION MAP



MATCHLINE SEE SHEET 4

SHEET LAYOUT MAP



Landscape Plan

48 HOURS BEFORE DIGGING
CALL TOLL FREE
811
SUNSHINE STATE ONE CALL
OF FLORIDA, INC.



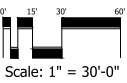
Coteur & Hearing

Landscape Architects
Land Planners
Environmental Consultants
1934 Commerce Lane
Suite 1
Jupiter, Florida 33458
561.747.6336 - Fax 561.747.1377
www.coteurhearing.com
Lic# LC-26000535

Amazon Distribution Center
Landscape Plan
City of Fort Pierce, Florida

Gregg
Byrick

Digitally signed
by Gregg Byrick
Date: 2025.03.09
16:02:21 -0400



DESIGNED	GB
DRAWN	WJ
APPROVED	GB
JOB NUMBER	24-1202
DATE	12/23/24
REVISIONS	02/24/25
	03/09/25

December 15, 2025 12:48:03 p.m.
Drawing: 24-1112 LP.DWG

SHEET 4 OF 14

© COTEUR & HEARING, INC.
These drawings are the property of the architect and as such shall remain the property of the architect. No part of these drawings may be reproduced or transmitted in any form or by any means, electronic, mechanical, photocopying, recording, or by any information storage and retrieval system, without the prior written permission of the architect.

MATCHLINE SEE SHEET 5

MATCHLINE SEE SHEET 3

PARCEL 1
12.00 AC

751.11'

390' SIGHT DISTANCE

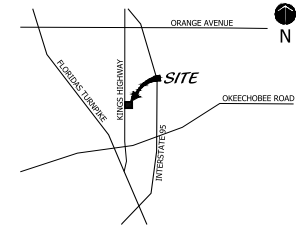
698.59'

S00°04'58" E

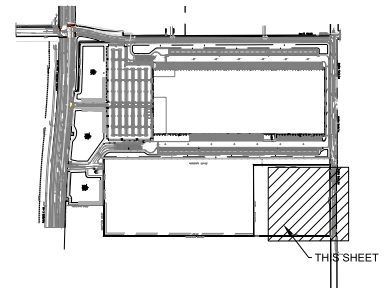
PETER'S ROAD

23+00
24+00
25+00
26+00
27+00
28+00
29+00

LOCATION MAP



SHEET LAYOUT MAP



Landscape Plan

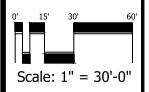
48 HOURS BEFORE DIGGING
CALL TOLL FREE
811
SUNSHINE STATE ONE CALL
OF FLORIDA, INC.




Coteur & Hearing
Landscape Architects
Land Planners
Environmental Consultants
1934 Commerce Lane
Suite 1
Jupiter, Florida 33458
561.747.6338 - Fax 561.747.1377
www.coteurhearing.com
Lic# LC-26000535

Amazon Distribution Center
Landscape Plan
City of Fort Pierce, Florida

Gregg
Byrick
Digitally signed by
Gregg Byrick
Date: 2025.03.09
16:02:46 -0400

DESIGNED	GB
DRAWN	VM
APPROVED	GB
JOB NUMBER	25-1202
DATE	12/23/25
REVISIONS	02/24/26
	03/09/26

December 15, 2025 12:48:03 p.m.
Drawing: 24-1112 LP.DWG

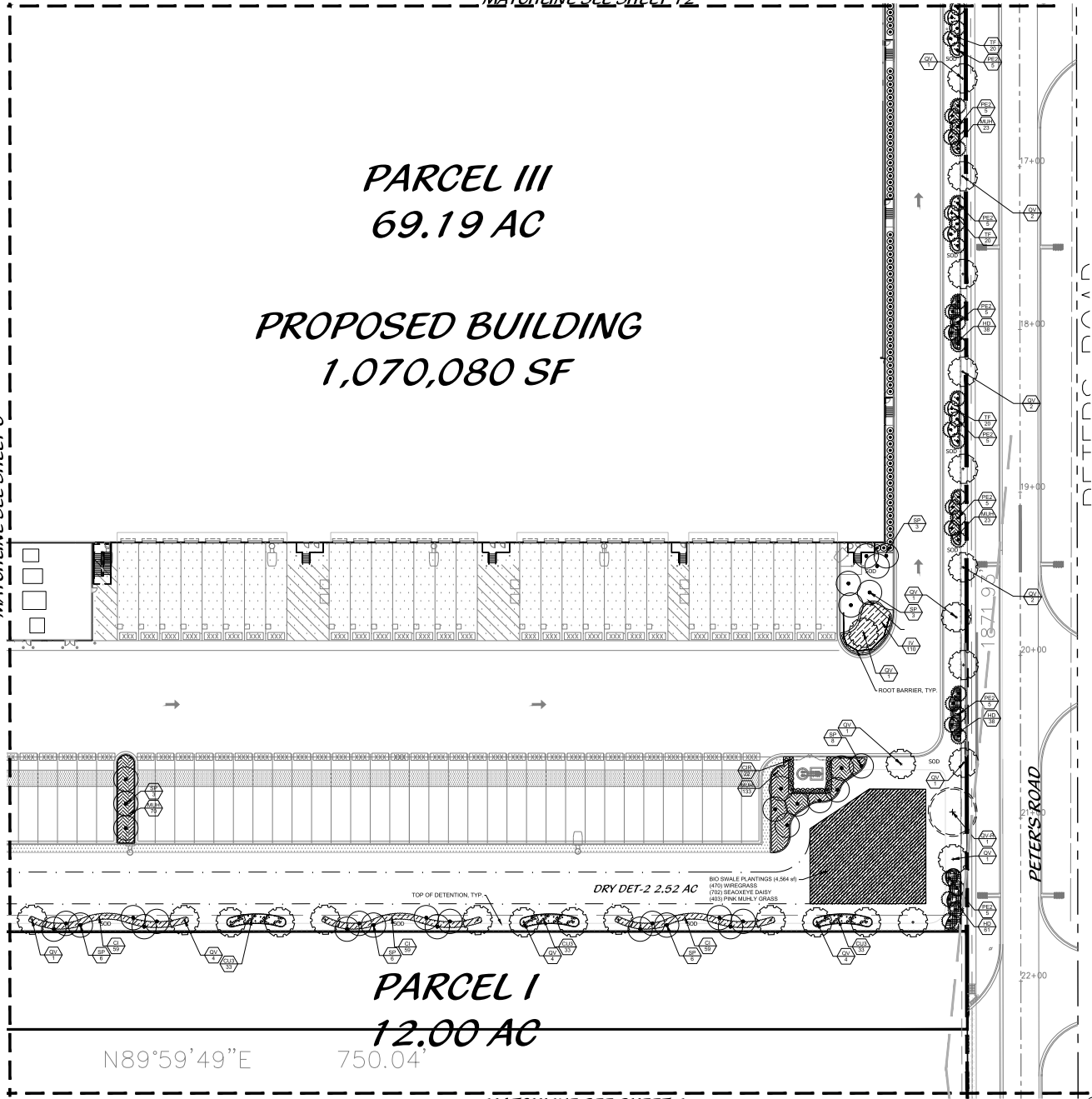
SHEET 5 OF 14
COTEUR & HEARING, INC.
These drawings are the property of the architect and as such are not to be reproduced or distributed without the express written consent of the architect. It is understood that any photocopies made by the architect.

MATCHLINE SEE SHEET 12

PARCEL III
69.19 AC

PROPOSED BUILDING
1,070,080 SF

MATCHLINE SEE SHEET 6



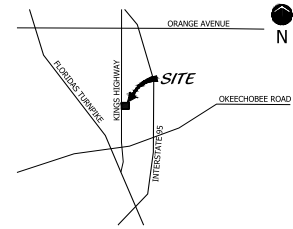
PARCEL I
12.00 AC

N89°59'49"E

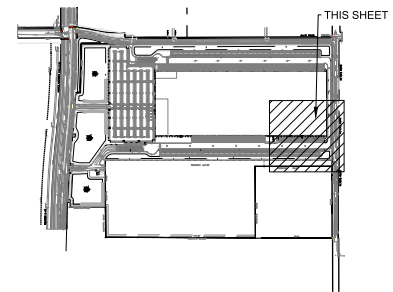
750.04'

MATCHLINE SEE SHEET 4

LOCATION MAP



SHEET LAYOUT MAP



Landscape Plan

48 HOURS BEFORE DIGGING
CALL TOLL FREE
811
SUNSHINE STATE ONE CALL
OF FLORIDA, INC.



North



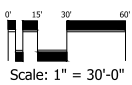
Coteur & Hearing

Landscape Architects
Land Planners
Environmental Consultants
1934 Commerce Lane
Suite 1
Jupiter, Florida 33458
561.747.6338 - Fax 561.747.1377
www.coteurhearing.com
Lic# LC-26000535

Amazon Distribution Center
Landscape Plan
City of Fort Pierce, Florida

Gregg Byrick

Digitally signed
by Gregg Byrick
Date: 2024.03.09
16:03:07 -0400



DESIGNED	GB
DRAWN	WJA
APPROVED	GB
JOB NUMBER	25-1202
DATE	12/2/23
REVISIONS	02/24/25
	03/09/25

December 15, 2025 12:48:03 p.m.
Drawing: 24-1112 LP.DWG

SHEET 6 of 14

● COTEUR & HEARING, INC.
These drawings are the property of the architect and are not to be used for any other project or purpose without the written consent of the architect. All drawings are subject to change without notice and are not to be used for any other project or purpose without the written consent of the architect.

MATCHLINE SEE SHEET 11

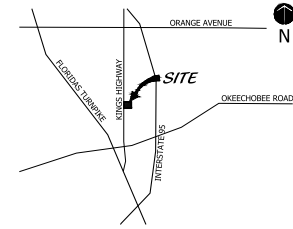
PARCEL III
69.19 AC

PROPOSED BUILDING
1,070,080 SF

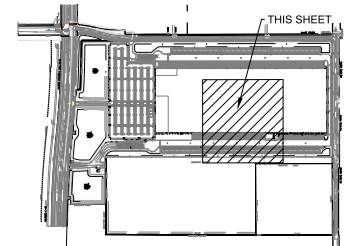
MATCHLINE SEE SHEET 7

MATCHLINE SEE SHEET 5

LOCATION MAP



SHEET LAYOUT MAP



Landscape Plan

48 HOURS BEFORE DIGGING
CALL TOLL FREE
811
SUNSHINE STATE ONE CALL
OF FLORIDA, INC.



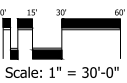
Coteleur & Hearing

Landscape Architects
Land Planners
Environmental Consultants
1934 Commerce Lane
Suite 1
Jupiter, Florida 33458
561.747.6338 - Fax 561.747.1377
www.coteleurhearing.com
Lic# LC-26000535

Amazon Distribution Center
Landscape Plan
City of Fort Pierce, Florida

Gregg
Byrick

Digitally signed
by Gregg Byrick
Date: 2026.03.09
16:03:31 -0500

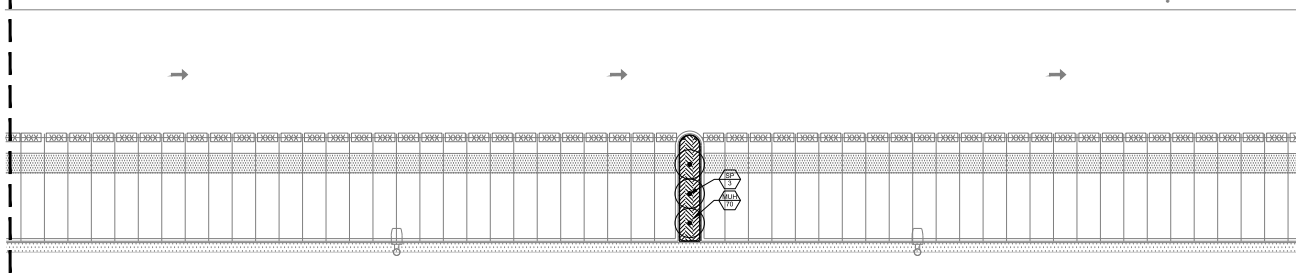
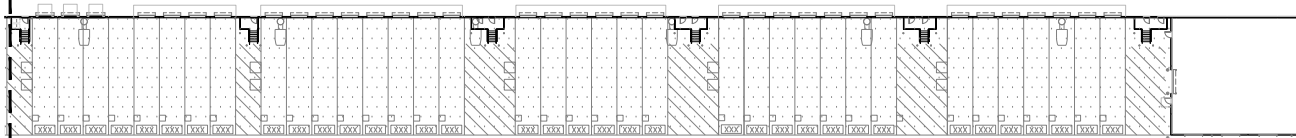


DESIGNED	GB
DRAWN	GB
APPROVED	GB
JOB NUMBER	25-1202
DATE	12/2/25
REVISIONS	02/24/26
	03/09/26

December 15, 2025 12:48:03 p.m.
Drawing: 24-112 LP.DWG

SHEET 7 of 14

COTELEUR & HEARING, INC.
These drawings are the property of the architect and as
such shall be returned to the architect upon completion
of the project. The architect shall not be held responsible
for any discrepancies to the architect.



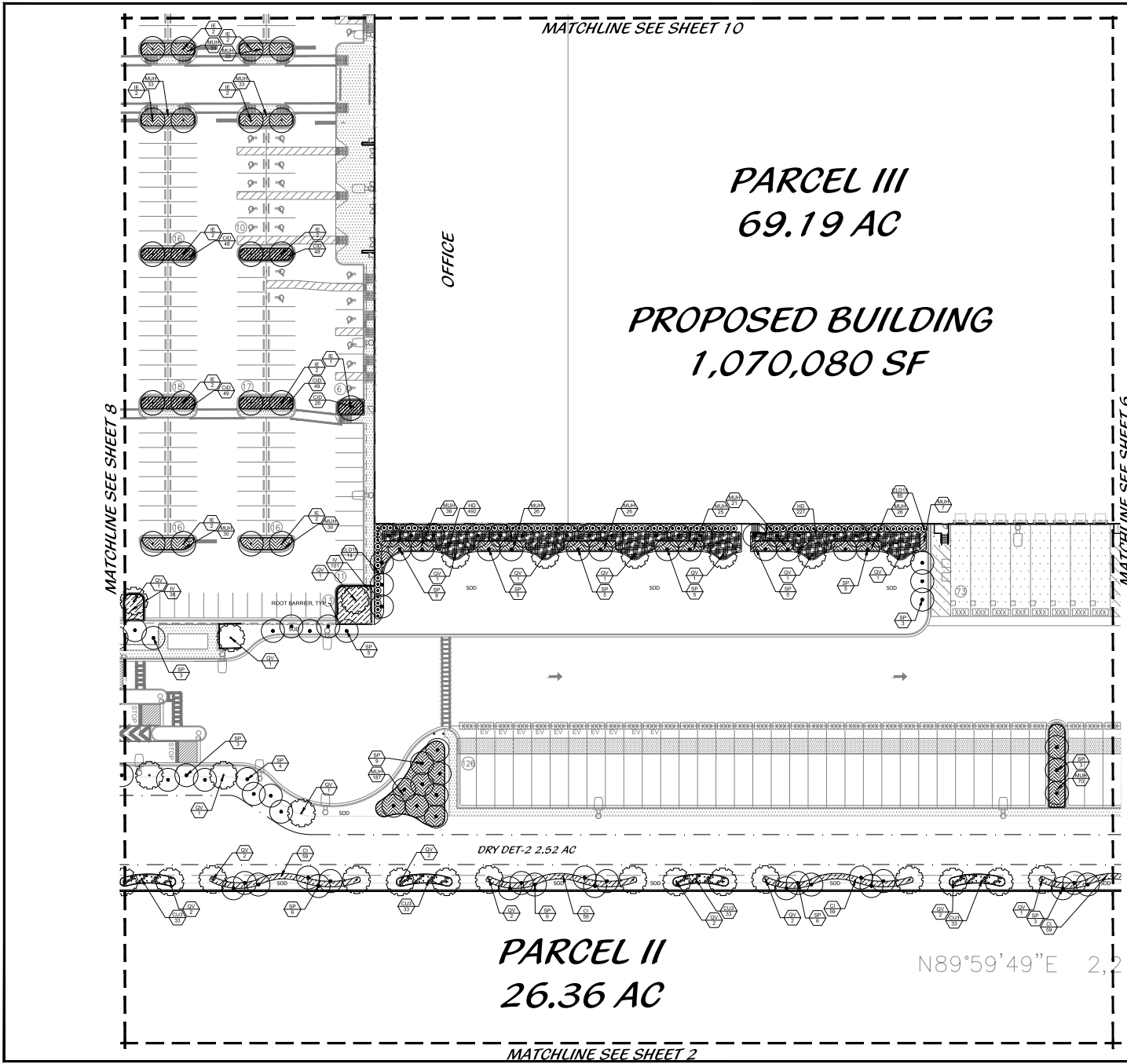
DRY DET-2 2.52 AC

TOP OF DETENTION, TYP.

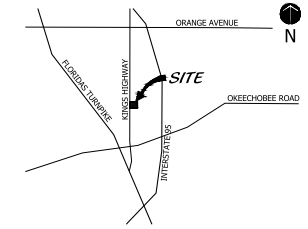
211.82'

PARCEL II
26.36 AC

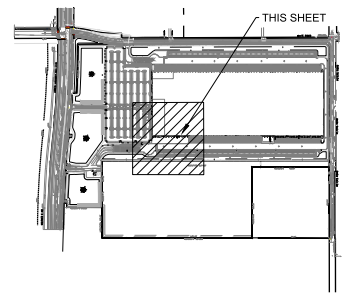
MATCHLINE SEE SHEET 3



LOCATION MAP



SHEET LAYOUT MAP



Landscape Plan

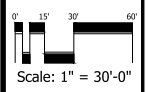
48 HOURS BEFORE DIGGING
CALL TOLL FREE
811
SUNSHINE STATE ONE CALL
OF FLORIDA, INC.



Coteur & Hearing
Landscape Architects
Land Planners
Environmental Consultants
1934 Commerce Lane
Suite 1
Jupiter, Florida 33458
561.747.6338 - Fax 561.747.1377
www.coteurhearing.com
Lic# LC-26000535

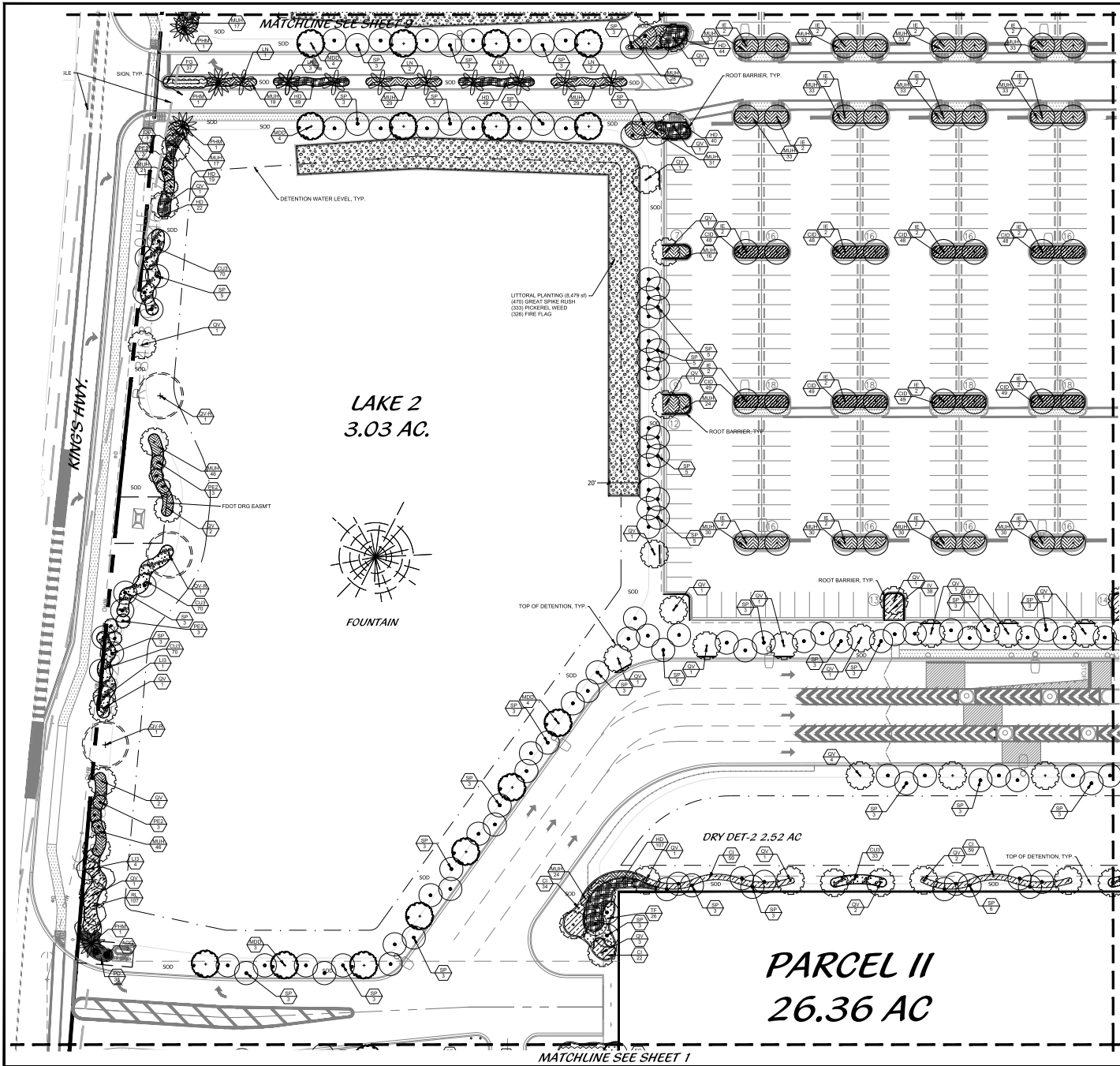
Amazon Distribution Center
Landscape Plan
City of Fort Pierce, Florida

Gregg Byrick
Digitally signed
by Gregg Byrick
Date: 2024.03.09
16:03:56 -0400

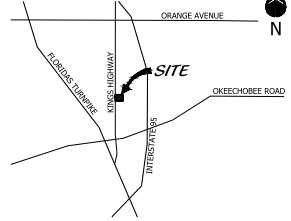


DESIGNED	GB
DRAWN	WML
APPROVED	GB
JOB NUMBER	24-1202
DATE	12/23/23
REVISIONS	02/24/25
	03/09/25

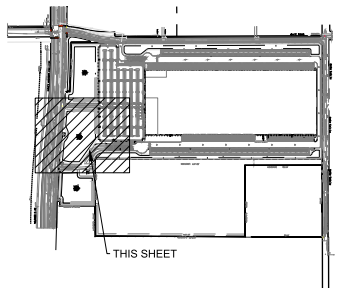
December 15, 2025 12:48:03 p.m.
Drawing: 24-1112 LP-DWG



LOCATION MAP



SHEET LAYOUT MAP



Landscape Plan

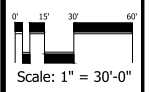
48 HOURS BEFORE DIGGING
CALL TOLL FREE
811
SUNSHINE STATE ONE CALL
OF FLORIDA, INC.



Coteur & Hearing
Landscape Architects
Land Planners
Environmental Consultants
1934 Commerce Lane
Suite 1
Jupiter, Florida 33458
561.747.6336 • Fax 747.1377
www.coteurhearing.com
Lic# LC-26000535

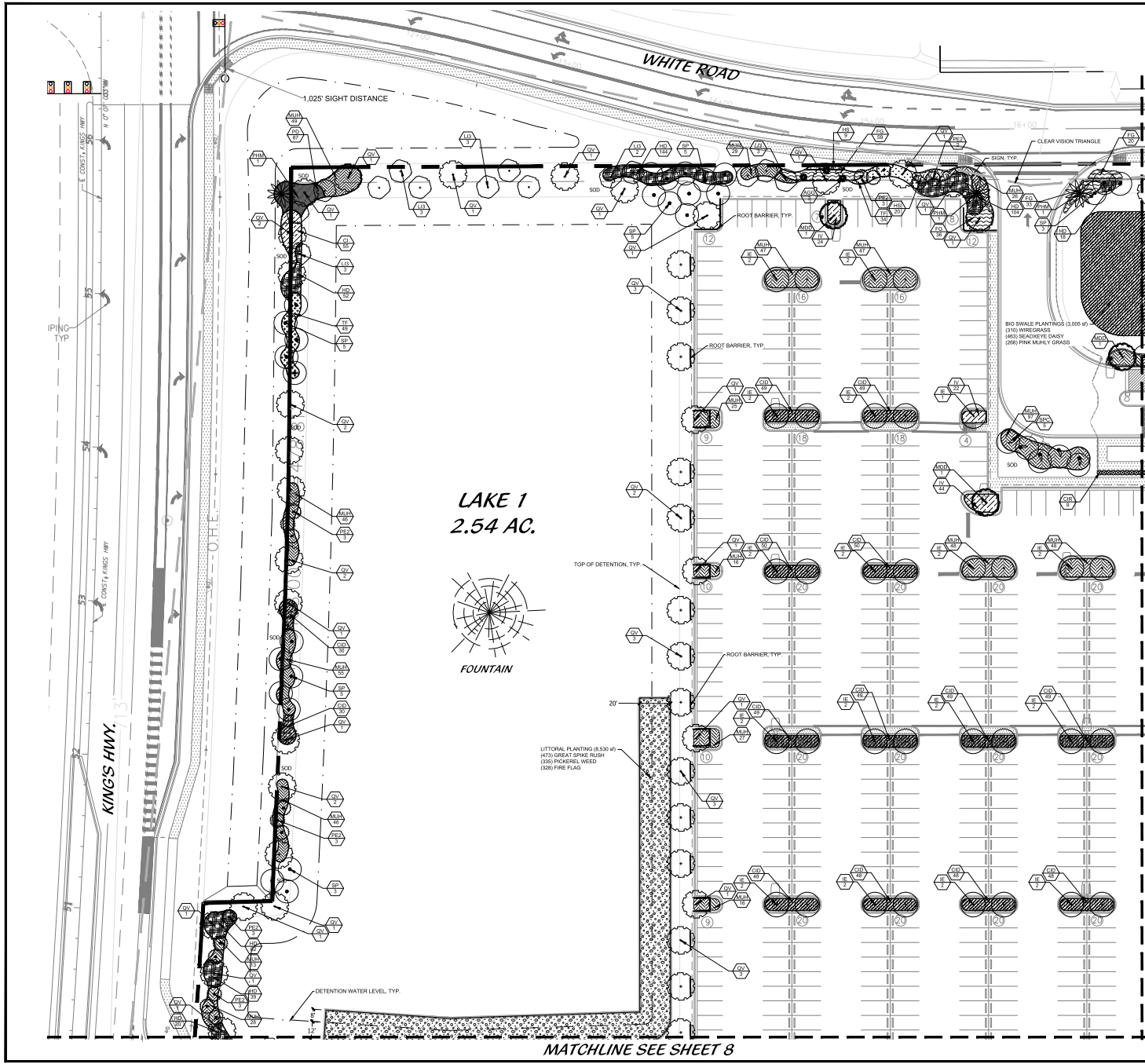
Amazon Distribution Center
Landscape Plan
City of Fort Pierce, Florida

Gregg Byrick
Digitally signed
by Gregg Byrick
Date: 2026.03.09
16:04:27 -04'00'

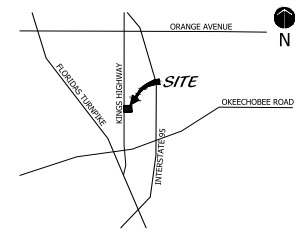


DESIGNED	GB
DRAWN	WJM
APPROVED	GB
JOB NUMBER	25-1202
DATE	12/2/25
REVISIONS	02/24/26
	03/09/26

December 15, 2025 12:48:03 p.m.
Drawing: 24-1112 LP.DWG

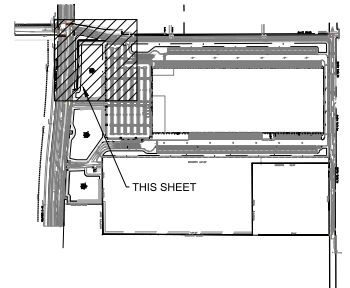


LOCATION MAP



MATCHLINE SEE SHEET TO

SHEET LAYOUT MAP



Landscape Plan

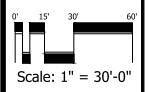
48 HOURS BEFORE DIGGING
CALL TOLL FREE
811
SUNSHINE STATE ONE CALL
OF FLORIDA, INC.



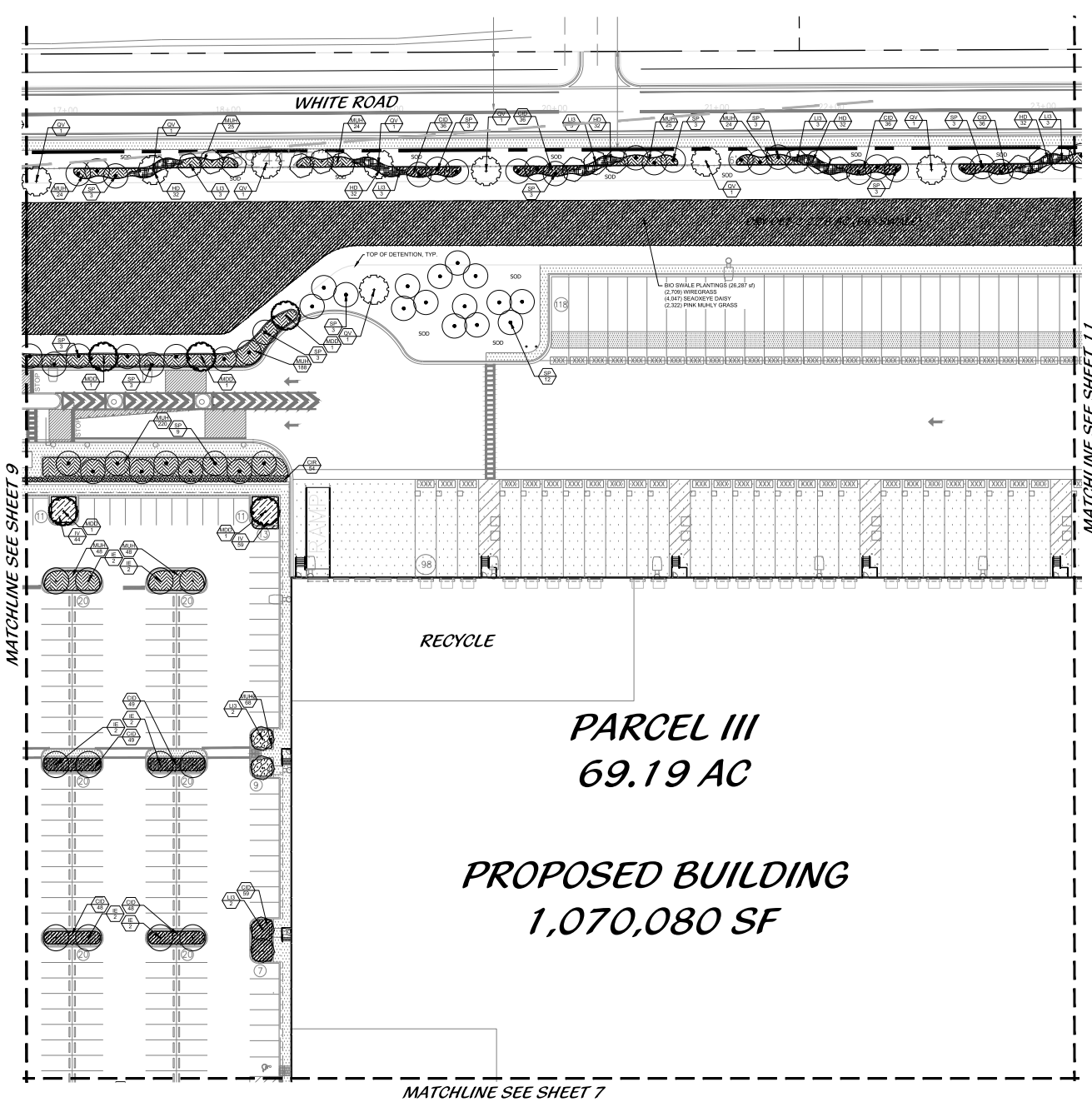
Coteur & Hearing
Landscape Architects
Land Planners
Environmental Consultants
1934 Commerce Lane
Suite 1
Jupiter, Florida 33458
561.747.6336 • Fax 747.1377
www.coteurhearing.com
Lic# LC-26000535

Amazon Distribution Center
Landscape Plan
City of Fort Pierce, Florida

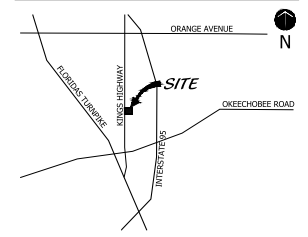
Gregg
Byrick
Digitally signed
by Gregg Byrick
Date: 2020.03.09
16:04:57 -04'00'



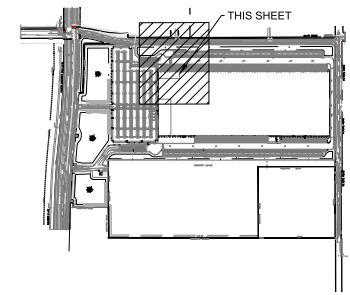
DESIGNED	GB
DRAWN	GB
APPROVED	GB
JOB NUMBER	25-1202
DATE	12/21/20
REVISIONS	02/24/21
	03/09/21



LOCATION MAP



SHEET LAYOUT MAP



Landscape Plan

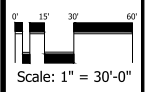
48 HOURS BEFORE DIGGING
CALL TOLL FREE
811
SUNSHINE STATE ONE CALL
OF FLORIDA, INC.



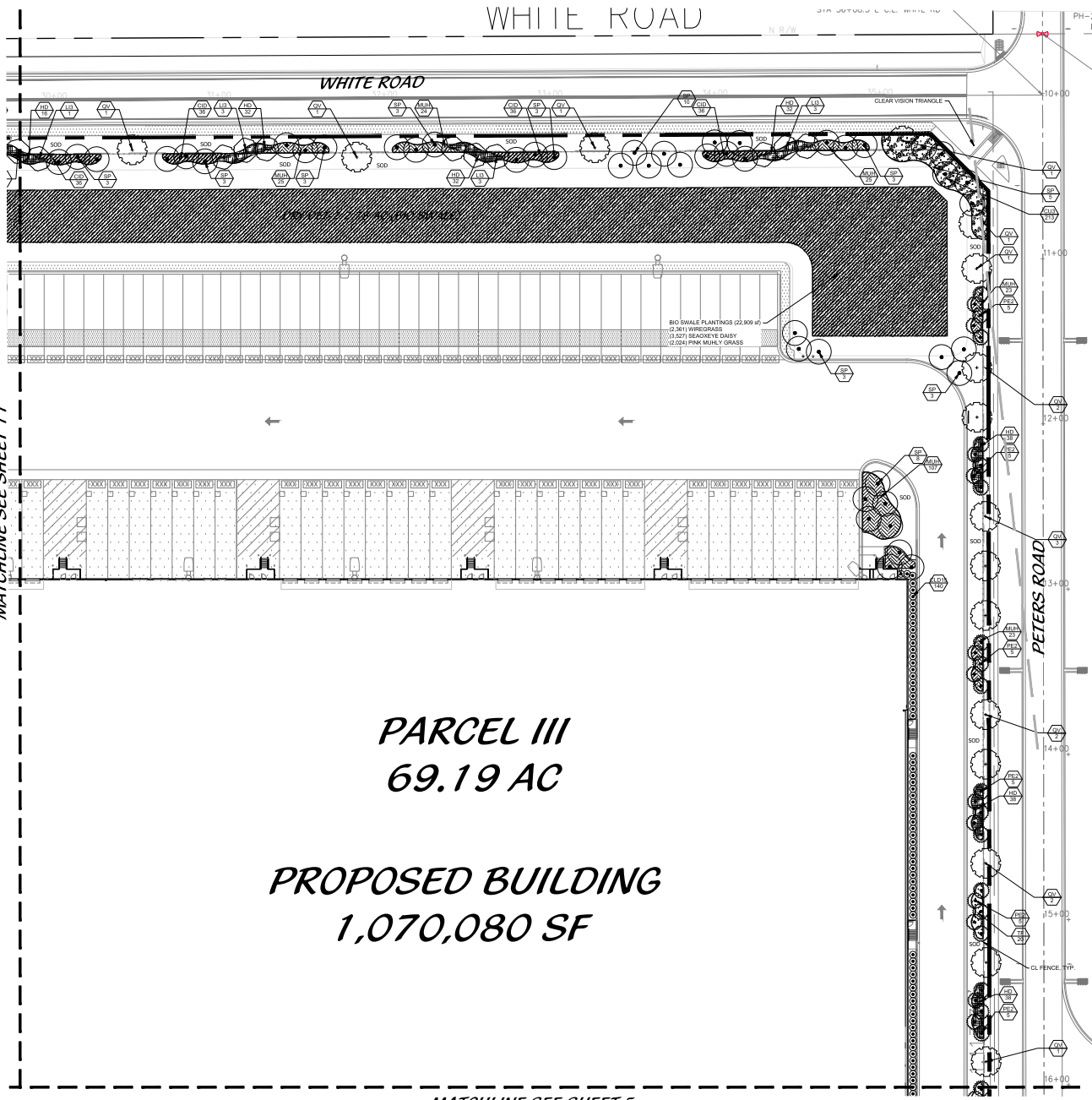
Coteur & Hearing
Landscape Architects
Land Planners
Environmental Consultants
1934 Commerce Lane
Suite 1
Jupiter, Florida 33458
561.747.6338 - Fax: 561.1377
www.coteurhearing.com
Lic# LC-26000535

Amazon Distribution Center
Landscape Plan
City of Fort Pierce, Florida

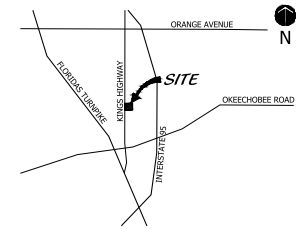
Gregg Byrick
Digitally signed
by Gregg Byrick
Date: 2025.03.09
16:05:29 -0400



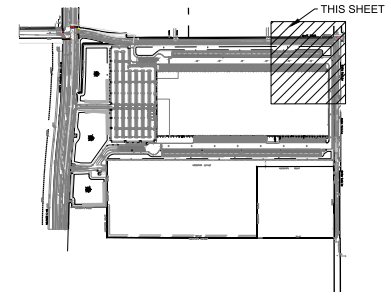
DESIGNED	GB
DRAWN	WJB
APPROVED	GB
JOB NUMBER	25-1202
DATE	12/23/25
REVISIONS	02/24/25
	03/09/25



LOCATION MAP



SHEET LAYOUT MAP



Landscape Plan

48 HOURS BEFORE DIGGING
CALL TOLL FREE
811
SUNSHINE STATE ONE CALL
OF FLORIDA, INC.



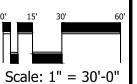
Coteur & Hearing

Landscape Architects
Land Planners
Environmental Consultants
1934 Commerce Lane
Suite 1
Jupiter, Florida 33458
561.747.6336 • Fax: 747.1377
www.coteurhearing.com
Lic# LC-26000535

Amazon Distribution Center
Landscape Plan
City of Fort Pierce, Florida

Gregg
Byrick

Digitally signed
by Gregg Byrick
Date: 2024.03.09
16:06:33 -0400



DESIGNED	GB
DRAWN	WJL
APPROVED	GB
JOB NUMBER	24-1202
DATE	12/2/23
REVISIONS	02/24/25
	03/09/25

December 15, 2025 12:48:03 p.m.
Drawing: 24-1112 LP-090

SHEET 13 of 14
COTEUR & HEARING, INC.
These drawings are the property of the architect and as such are not to be reproduced or distributed without the written consent of the architect. The architect shall not be held responsible for any damage or loss resulting from the use of these drawings without the written consent of the architect.

LANDSCAPE NOTES

ALL PLANT MATERIAL SHALL BE HIGH QUALITY, BUREAU OF LAND MANAGEMENT OR BETTER AS DEFINED BY THE DIVISION OF PLANT INDUSTRY (FLORIDA LAWS AND STANDARDS LATEST EDITION).

ALL LANDSCAPE SHALL CONFORM TO THE REQUIREMENTS OF THE CITY OF FORT PIERCE LAND DEVELOPMENT REGULATIONS, THE CITY OF FORT PIERCE LANDSCAPE CODE (LOCAL) SHALL GOVERN IN THE EVENT OF A CONFLICT.

VEGETATION REMOVAL PERMITS ARE REQUIRED PRIOR TO REMOVING, CLEARING OR STRIPPING ANY VEGETATION FROM THE PROPERTY.

AT THE TIME OF BUILDING PERMIT, THE APPLICANT SHALL EXECUTE HOLD HARMLESS AGREEMENTS WITH ALL APPLICABLE UTILITIES FOR LANDSCAPING WITHIN UTILITY RIGHTS-OF-WAY AND CHANGES WITHIN THE AUTHORIZATION OF ANY CITY OF FORT PIERCE, THE OWNER, AND THE LANDSCAPE ARCHITECT.

THE LANDSCAPE CONTRACTOR SHALL REVIEW THE PROJECT DRAWINGS AND UTILITY LINE PLANS TO DETERMINE AND AVOID ALL CONFLICTS. THE LANDSCAPE CONTRACTOR SHALL VERIFY THE LOCATION OF ALL UNDERGROUND UTILITIES PRIOR TO COMMENCING WORK.

THE LANDSCAPE CONTRACTOR SHALL BE RESPONSIBLE FOR ALL PERMITS.

THE CONTRACTOR SHALL COORDINATE THE PLANTING AND TRIMMING OF STREET TREES TO ENSURE FULL VISIBILITY TO TRAFFIC CONTROL AND SAFETY SIGNALS.

TREES SHALL BE POSITIONED TO AVOID CONTACTS WITH SIGNAGE AND SITE LIGHTING. LAMPING TREES WILL BE PROVIDED BY INTERSECTIONS WHICH SERVED NECESSARY.

ALL VEGETATION SHALL BE SELECTED AND POSITIONED SO THAT IT DOES NOT PRESENT OBSTRUCTIONS TO THE LINE OF SIGHT AT INTERSECTIONS PURSUANT TO SECTION 27.12(2)(a)(3) OF THE CITY OF FORT PIERCE CODE.

ALL ABOVE GROUND UTILITIES (E.G. TRANSFORMERS, SWITCH POLES, A.C. CONDUITS, AND AIR LINES SHALL BE FULLY EXPOSED FROM VIEW ON THESE SITES WITH LANDSCAPING. THE LANDSCAPING SHALL TO THE FULLEST POINT OF SAID EQUIPMENT AT THE END OF PLANTING.

ALL TREES SHALL BE LOCATED WITHIN A MULCH PLANTING BED WITH A MINIMUM OF TWO (2) FEET OF CLEARANCE TO THE EDGE OF THE BED.

500 AND ORBITATION SHALL BE INSTALLED IN ANY ADJACENT RIGHT OF WAY BETWEEN THE SIDEWALK AND THE CURB. ALL SOIL SHALL BE STENOGRAPHUM SECURATUM FLORIDANUM PALMETTO (ST. AUGUSTINE SOIL).

TREES WITHIN PLANTING BEDS LESS THAN FIVE (5) FEET IN WIDTH SHALL BE LOCATED TO AVOID CONTACTS WITH THE OVERHANG OF VEHICLES.

TYPE D BASED CONCRETE CURBING SHALL BE PROVIDED AROUND ALL PLANTING ISLANDS WITHIN VEHICULAR DRIVE AREAS.

TREES AT ENTRANCE VIEWS AND WITHIN SIGHT TRIANGLES SHALL BE TRIMMED IN SUCH A MANNER TO MINIMIZE SITE OBSTRUCTION. SUCH TRIMMING SHALL BE LIMITED TO THE TRUNK AND BRANCHES OF THE TREE. TRIMMING SHALL NOT INTERFERE WITH THE INTERSECTION OF TWO STREETS OR A STREET AND A DRIVEWAY. A CLEAR VISION AREA SHALL CONTAIN NO PLANTING, TREES OR OBSTRUCTIONS OF ANY KIND. EXISTING OBSTRUCTIONS SHALL BE REMOVED TO PROVIDE TEN (10) FEET BY THIRTY (30) FOOT VISION TRIANGLES SHALL BE PROVIDED AT THE INTERSECTIONS WITH THE PUBLIC RIGHT OF WAY. IN ADDITION, ALL LANDSCAPING SHALL CONFORM TO THE REQUIREMENTS OF THE CITY OF FORT PIERCE CODE.

EARTH BERMS SHALL NOT EXCEED A 3' SLOPE AT 15' SPACES OR GREATER ARE PREFERABLE.

ALL TREES PLANTED UNDER OR ADJACENT TO FIRE POWER LINES WILL COMPLY WITH THE FIRE TRIP IN THE RIGHT OF WAY (SECTION 207.030).

PERIMETER TREES SHALL BE PLANTED SUCH THAT THEY COMPLEMENT THE SPACING OF ANY EXISTING TREES IN ADJACENT DEVELOPED AREAS.

ALL LANDSCAPE PLANTS AND TREES SHALL BE PLANTED FROM SHILL ROCK AND CONSTRUCTION DEBRIS, EXCEPTED TO A DEPTH OF 30 INCHES OR TO CLEAN NATIVE SOILS AND FILLED WITH THE SPECIFIED BARK MULCH.

ALL LANDSCAPE SOILS SHALL INCORPORATE THE INSTALLATION OF MOUNDING OF NATIVE SOILS A MINIMUM OF SIX INCHES (6") ABOVE THE TOP OF CURB.

1.5" BIRDOCKER ROOT BARRIERS SHALL BE PROVIDED FOR SHADE TREES PLANTED WITHIN SIX (6) FEET OF PUBLIC CURBS AND PUBLIC RIGHT OF WAY. ALL ROOT BARRIERS SHALL BE INSTALLED IN ACCORDANCE WITH THE MANUFACTURER'S INSTALLATION INSTRUCTIONS. THE TOTAL LENGTH OF THE ROOT BARRIERS SHALL BE 20 FEET TO THE MAINWALK AND 10 FEET TO THE CURB.

ALL AREAS SHALL BE FULLY IRRIGATED IN ACCORDANCE WITH THE REQUIREMENTS OF THE CITY OF FORT PIERCE. THE IRRIGATION WATER MAINS SHALL BE 6" WATER FOR COMMON AREAS AND 8" WATER MAIN AROUND THE BUILDING FOUNDATION.

CATCH BASINS AND DRAINAGE SHALL NOT BE LOCATED WITHIN IRRIGATED PERIMETER BUFFERS OR RESERVE AREAS. THE DRAINAGE SYSTEM SHALL BE DESIGNED TO PROVIDE 100% OVERFLOW COVERAGE TO ALL LANDSCAPE AND SOIL TYPES.

THE IRRIGATION SYSTEM SHALL BE EQUIPPED WITH A BAKS SENSOR/CLIFF SWITCH IN ACCORDANCE WITH STATE AND LOCAL REQUIREMENTS.

EXISTING TREES AND VEGETATION TO REMAIN SHALL BE STAKED AND BARBERAGED PRIOR TO ANY LAND CLEARING. TREES TO BE RELOCATED SHALL BE ROOT PRUNED AND PROTECTED DURING CONSTRUCTION.

ALL TREES PROPOSED TO BE RELOCATED ON SITE SHALL BE PROTECTED IN ACCORDANCE WITH THE PROCEDURES OUTLINED IN DIVISION 4, VEGETATION REMOVAL, REQUIREMENTS IN THE CITY OF FORT PIERCE CODE. PRIOR TO THE COMMENCEMENT OF CONSTRUCTION, THE CONTRACTOR SHALL SUBMIT TO THE CITY OF FORT PIERCE:

1. ANY AREA DESIGNATED WITH PROVISIONS TO REMAIN THAT IS DISTURBED DURING CONSTRUCTION WILL BE RESTORED WITH NATIVE PLANTINGS.

EXISTING TREES PROPOSED TO BE RELOCATED ON SITE SHALL BE PRUNED ACCORDING TO ANSI A300 STANDARDS OR BY AN ISA CERTIFIED ARBORIST.

ALL EXISTING LANDSCAPING AND TREES TO REMAIN SHALL BE BARBERAGED WITH ORANGE CONSTRUCTION BARBERAGE. THE BARBERAGE SHALL BE FULLY MAINTAINED THROUGH THE CONSTRUCTION PERIOD. THE EDGE OF THE SHRUB MOUND SHALL BE MAINTAINED AT ALL TIMES TO PREVENT THE LOSS OF SOIL TO ADJACENT AREAS.

EXISTING SUITABLE NATIVE VEGETATION LOCATED WITHIN THE PROPOSED DEVELOPMENT CONTRACTOR SHALL BE RELOCATED TO NEARBY AREAS OF THE SITE THAT ARE APPROPRIATE FOR NATIVE VEGETATION TO BE RELOCATED.

RELOCATION METHODOLOGY: EXISTING NATIVE VEGETATION DETERMINED TO BE SUITABLE FOR RELOCATION SHALL BE IDENTIFIED AND MARKED WITH RED FLAGGING. THE CONTRACTOR SHALL REMOVE ALL SOIL FROM THE AREA OF THE SHRUB MOUND TO BE RELOCATED. THE CONTRACTOR SHALL REMOVE ALL SOIL FROM THE AREA OF THE SHRUB MOUND TO BE RELOCATED. FOLLOWING RELOCATION, VEGETATION SHALL BE WATERED AND MULCHED TO INSURE SURVIVAL. AT A MINIMUM, THE APPLICANT SHALL INSURE 80% SURVIVAL FOR ALL RELOCATED PLANT MATERIAL.

PLANT SCHEDULE 800,000 SQ FT / 18.4 AC. OF SOD ESTIMATED. ADDITIONAL MAY BE REQUIRED

CODE	QTY	BOTANICAL NAME	COMMON NAME	CONTAINER	SIZE	NATIVE	DROUGHT TOL.	REMARKS
TREES								
IE	106	ILEX X ATTENUATA 'EAGLESTON'	EAGLESTON HOLLY	30 GAL	2.5' CAL	12'	HT X 5' SPRD	FULL CANOPY, 5' CT. SOUTH GROUND, MATCHED, FLORIDA FANCY
LD	63	LAGERSTROEMIA INDICA 'MUSKOGEE'	CRAPE MYRTLE	65 GAL MIN.	2.5' CAL	12'	O.A.X 5' SPRD	FULL & THICK CANOPY, FLORIDA FANCY, 5' CT.
M30	28	MAGNOLIA GRANDIFLORA 'D.D. BLANCHARD'	SOUTHERN MAGNOLIA	65 GAL	3' CAL	14'	HT X 5' - 6' SPRD	FULL CANOPY, SOUTH GROUND, MATCHING FF
PE2	131	PINUS ELLIOTTII 'DENSA'	SLASH PINE	N.A.	2.5' CAL	12'	O.A.	FULL CANOPY; PLANTED IN PRESERVE
QV-R	7	QUERCUS VIRGINIANA	LIVE OAK	---	---	---	---	RELOCATE
QV	191	QUERCUS VIRGINIANA	LIVE OAK	30 GAL OR F.G.	2.5' CAL MIN.	12'	HT X 5' SPRD.	FULL CANOPY, 4' CT MIN.
PALM TREES								
LN	10	LIVISTONA NITIDA +	NITIDA PALM	FIELD GROWN	N.A.	14'-16'	OA	FULL CANOPY, DIAMOND CUT, FLORIDA FANCY.
PHM	8	PHOENIX DACTYLIFERA 'MEDICHOX'	MEDICHOX DATE PALM	FIELD GROWN	N.A.	10'-12'	HT.	STRAIGHT TRUNK, FULL CANOPY, DIAMOND CUT. HT.
SPC	5	SABAL PALMETTO	CABBAGE PALM	FIELD GROWN	N.A.	11'-18'	22' CT., STGG.	SLOUGH, CURVED TRUNK, STAGGER HEIGHTS IN CLUSTERS
SP	478	SABAL PALMETTO	CABBAGE PALM	N.A.	N.A.	14', 18', 22'	STGG.	RELOCATED FROM ON SITE
SHRUBS								
AGG	5	AGAVE AMERICANA 'GAINESVILLE BLUE'	GAINESVILLE BLUE AGAVE	3 GAL	4'-5" O.A. X 3'-4" SPRD.	A.S.		FULL & THICK
CR	85	CHRYSOBALANUS ICACO 'RED TIP'	RED TIP COCCOPLUM	70 GAL	3' X 3'	3'	O.C.	FULL
CLD15	239	CLUSIA GUTTIFERA	CLUSIA	15 GAL	6' HT. X 3' SPRD.	3'	O.C.	FULL & THICK
PHM5	39	PODOCARPUS MAKII-	PODOCARPUS	15 GAL	5' O.A., 2' SPRD	2'	O.C.	FULL & THICK
GROUND COVERS								
CI	819	CHRYSOBALANUS ICACO	COCCOPLUM	3 GAL	18" X 18"	30"	O.C.	FULL & THICK
CID	1,939	CHRYSOBALANUS ICACO 'HORIZONTAL'	DWARF COCCOPLUM	3 GAL	12" X 12"	24"	O.C.	FULL & THICK, NOT STRETCHED, FF
CJ3	979	COCOLOBA LIVIFERA	SEA GRASS	3 GAL	24" X 24"	24"	O.C.	FULL & THICK
FG	290	FICUS MACROPHYLLA 'GREEN ISLAND'	GREEN ISLAND FIGUS	3 GAL	15" X 15"	24"	O.C.	FULL & THICK
HD	2,508	HAMELIA PATENS 'COMPACTA'	DWARF FIREBUSH	3 GAL	18" X 18"	24"	O.C.	FULL & THICK, FLORIDA NATIVE VARIETY
HS	29	HIBISCUS 'SEMINOLE PINK'	SEMINOLE PINK HIBISCUS	7 GAL	24" X 24"	2.5'	O.C.	FULL & THICK
IV	516	ILEX VOMITORIA 'SHILLINGS DWARF'	DWARF YAUPOH HOLLY	3 GAL	15" X 15"	24"	O.C.	FULL & THICK
MH2	68	MUHLENBERGIA CAPILLARIS	PINK MUHLY GRASS	1 GAL	15" X 15"	24"	O.C.	FULL & THICK
MH1	3,576	MUHLENBERGIA CAPILLARIS	PINK MUHLY GRASS	1 GAL	24" X 24"	30"	O.C.	FULL & THICK
PD	125	PODOCARPUS MACROPHYLLUS 'DWARF PRINGLES'	DWARF PODOCARPUS	3 GAL	15" X 15"	18"	O.C.	FULL & THICK
RL	146	RONDELETTA LEUCOPHYLLA	PANAMA ROSE	3 GAL	18" X 18"	24"	O.C.	FULL & THICK

LANDSCAPE SPECIFICATIONS

1. GENERAL LANDSCAPE REQUIREMENTS

REMOVAL OF CONTACT WORK SHALL BE AS NOT LIMITED TO: SOIL PREPARATION, FINE OR FINISH GRADING, FURNISHING AND INSTALLING PLANT MATERIAL, WATERING, STAKING, GROUND AND MULCHING.

PLANT SIZE AND QUALITY
TREES: PALMS, SHRUBS, GROUNDCOVERS, PLANT MATERIAL SHALL CONFORM TO THE SIZES INDICATED ON THE DRAWINGS. PLANT MATERIAL SHALL BE HIGH QUALITY, BUREAU OF LAND MANAGEMENT OR BETTER AS DEFINED BY THE DIVISION OF PLANT INDUSTRY (FLORIDA LAWS AND STANDARDS LATEST EDITION). PLANT MATERIAL SHALL BE IN ACCORDANCE WITH CODES AND STANDARDS FOR NURSERY PLANTS PARTS 1 & 1.1, LATEST EDITION, PUBLISHED BY THE FLORIDA DEPARTMENT OF AGRICULTURE AND FORESTRY.

ALL CONTAINER GROWN MATERIAL SHALL BE HEALTHY, VIGOROUS, WELL-ROOTED PLANTS AND SHALL BE IN ACCORDANCE WITH THE FOLLOWING SPECIFICATIONS:
ALL CONTAINER GROWN MATERIAL SHALL BE HEALTHY, VIGOROUS, WELL-ROOTED PLANTS AND SHALL BE IN ACCORDANCE WITH THE FOLLOWING SPECIFICATIONS:
ALL CONTAINER GROWN MATERIAL SHALL BE HEALTHY, VIGOROUS, WELL-ROOTED PLANTS AND SHALL BE IN ACCORDANCE WITH THE FOLLOWING SPECIFICATIONS:
ALL CONTAINER GROWN MATERIAL SHALL BE HEALTHY, VIGOROUS, WELL-ROOTED PLANTS AND SHALL BE IN ACCORDANCE WITH THE FOLLOWING SPECIFICATIONS:

ALL CONTAINER GROWN MATERIAL SHALL BE HEALTHY, VIGOROUS, WELL-ROOTED PLANTS AND SHALL BE IN ACCORDANCE WITH THE FOLLOWING SPECIFICATIONS:
ALL CONTAINER GROWN MATERIAL SHALL BE HEALTHY, VIGOROUS, WELL-ROOTED PLANTS AND SHALL BE IN ACCORDANCE WITH THE FOLLOWING SPECIFICATIONS:
ALL CONTAINER GROWN MATERIAL SHALL BE HEALTHY, VIGOROUS, WELL-ROOTED PLANTS AND SHALL BE IN ACCORDANCE WITH THE FOLLOWING SPECIFICATIONS:

STANDARD PLANTING METHODS SHALL BE ONE (1) PART RECYCLED ORGANIC MATERIAL, ADD TO THREE (3) PARTS EXISTING NATIVE SOIL.

REMOVAL OF CONTACT WORK SHALL BE AS NOT LIMITED TO: SOIL PREPARATION, FINE OR FINISH GRADING, FURNISHING AND INSTALLING PLANT MATERIAL, WATERING, STAKING, GROUND AND MULCHING.

REMOVAL OF CONTACT WORK SHALL BE AS NOT LIMITED TO: SOIL PREPARATION, FINE OR FINISH GRADING, FURNISHING AND INSTALLING PLANT MATERIAL, WATERING, STAKING, GROUND AND MULCHING.

REMOVAL OF CONTACT WORK SHALL BE AS NOT LIMITED TO: SOIL PREPARATION, FINE OR FINISH GRADING, FURNISHING AND INSTALLING PLANT MATERIAL, WATERING, STAKING, GROUND AND MULCHING.

REMOVAL OF CONTACT WORK SHALL BE AS NOT LIMITED TO: SOIL PREPARATION, FINE OR FINISH GRADING, FURNISHING AND INSTALLING PLANT MATERIAL, WATERING, STAKING, GROUND AND MULCHING.

REMOVAL OF CONTACT WORK SHALL BE AS NOT LIMITED TO: SOIL PREPARATION, FINE OR FINISH GRADING, FURNISHING AND INSTALLING PLANT MATERIAL, WATERING, STAKING, GROUND AND MULCHING.

REMOVAL OF CONTACT WORK SHALL BE AS NOT LIMITED TO: SOIL PREPARATION, FINE OR FINISH GRADING, FURNISHING AND INSTALLING PLANT MATERIAL, WATERING, STAKING, GROUND AND MULCHING.

REMOVAL OF CONTACT WORK SHALL BE AS NOT LIMITED TO: SOIL PREPARATION, FINE OR FINISH GRADING, FURNISHING AND INSTALLING PLANT MATERIAL, WATERING, STAKING, GROUND AND MULCHING.

REMOVAL OF CONTACT WORK SHALL BE AS NOT LIMITED TO: SOIL PREPARATION, FINE OR FINISH GRADING, FURNISHING AND INSTALLING PLANT MATERIAL, WATERING, STAKING, GROUND AND MULCHING.

REMOVAL OF CONTACT WORK SHALL BE AS NOT LIMITED TO: SOIL PREPARATION, FINE OR FINISH GRADING, FURNISHING AND INSTALLING PLANT MATERIAL, WATERING, STAKING, GROUND AND MULCHING.

REMOVAL OF CONTACT WORK SHALL BE AS NOT LIMITED TO: SOIL PREPARATION, FINE OR FINISH GRADING, FURNISHING AND INSTALLING PLANT MATERIAL, WATERING, STAKING, GROUND AND MULCHING.

REMOVAL OF CONTACT WORK SHALL BE AS NOT LIMITED TO: SOIL PREPARATION, FINE OR FINISH GRADING, FURNISHING AND INSTALLING PLANT MATERIAL, WATERING, STAKING, GROUND AND MULCHING.

REMOVAL OF CONTACT WORK SHALL BE AS NOT LIMITED TO: SOIL PREPARATION, FINE OR FINISH GRADING, FURNISHING AND INSTALLING PLANT MATERIAL, WATERING, STAKING, GROUND AND MULCHING.

REMOVAL OF CONTACT WORK SHALL BE AS NOT LIMITED TO: SOIL PREPARATION, FINE OR FINISH GRADING, FURNISHING AND INSTALLING PLANT MATERIAL, WATERING, STAKING, GROUND AND MULCHING.

REMOVAL OF CONTACT WORK SHALL BE AS NOT LIMITED TO: SOIL PREPARATION, FINE OR FINISH GRADING, FURNISHING AND INSTALLING PLANT MATERIAL, WATERING, STAKING, GROUND AND MULCHING.

REMOVAL OF CONTACT WORK SHALL BE AS NOT LIMITED TO: SOIL PREPARATION, FINE OR FINISH GRADING, FURNISHING AND INSTALLING PLANT MATERIAL, WATERING, STAKING, GROUND AND MULCHING.

REMOVAL OF CONTACT WORK SHALL BE AS NOT LIMITED TO: SOIL PREPARATION, FINE OR FINISH GRADING, FURNISHING AND INSTALLING PLANT MATERIAL, WATERING, STAKING, GROUND AND MULCHING.

REMOVAL OF CONTACT WORK SHALL BE AS NOT LIMITED TO: SOIL PREPARATION, FINE OR FINISH GRADING, FURNISHING AND INSTALLING PLANT MATERIAL, WATERING, STAKING, GROUND AND MULCHING.

REMOVAL OF CONTACT WORK SHALL BE AS NOT LIMITED TO: SOIL PREPARATION, FINE OR FINISH GRADING, FURNISHING AND INSTALLING PLANT MATERIAL, WATERING, STAKING, GROUND AND MULCHING.

REMOVAL OF CONTACT WORK SHALL BE AS NOT LIMITED TO: SOIL PREPARATION, FINE OR FINISH GRADING, FURNISHING AND INSTALLING PLANT MATERIAL, WATERING, STAKING, GROUND AND MULCHING.

REMOVAL OF CONTACT WORK SHALL BE AS NOT LIMITED TO: SOIL PREPARATION, FINE OR FINISH GRADING, FURNISHING AND INSTALLING PLANT MATERIAL, WATERING, STAKING, GROUND AND MULCHING.

REMOVAL OF CONTACT WORK SHALL BE AS NOT LIMITED TO: SOIL PREPARATION, FINE OR FINISH GRADING, FURNISHING AND INSTALLING PLANT MATERIAL, WATERING, STAKING, GROUND AND MULCHING.

REMOVAL OF CONTACT WORK SHALL BE AS NOT LIMITED TO: SOIL PREPARATION, FINE OR FINISH GRADING, FURNISHING AND INSTALLING PLANT MATERIAL, WATERING, STAKING, GROUND AND MULCHING.

REMOVAL OF CONTACT WORK SHALL BE AS NOT LIMITED TO: SOIL PREPARATION, FINE OR FINISH GRADING, FURNISHING AND INSTALLING PLANT MATERIAL, WATERING, STAKING, GROUND AND MULCHING.

REMOVAL OF CONTACT WORK SHALL BE AS NOT LIMITED TO: SOIL PREPARATION, FINE OR FINISH GRADING, FURNISHING AND INSTALLING PLANT MATERIAL, WATERING, STAKING, GROUND AND MULCHING.

REMOVAL OF CONTACT WORK SHALL BE AS NOT LIMITED TO: SOIL PREPARATION, FINE OR FINISH GRADING, FURNISHING AND INSTALLING PLANT MATERIAL, WATERING, STAKING, GROUND AND MULCHING.

REMOVAL OF CONTACT WORK SHALL BE AS NOT LIMITED TO: SOIL PREPARATION, FINE OR FINISH GRADING, FURNISHING AND INSTALLING PLANT MATERIAL, WATERING, STAKING, GROUND AND MULCHING.

REMOVAL OF CONTACT WORK SHALL BE AS NOT LIMITED TO: SOIL PREPARATION, FINE OR FINISH GRADING, FURNISHING AND INSTALLING PLANT MATERIAL, WATERING, STAKING, GROUND AND MULCHING.

REMOVAL OF CONTACT WORK SHALL BE AS NOT LIMITED TO: SOIL PREPARATION, FINE OR FINISH GRADING, FURNISHING AND INSTALLING PLANT MATERIAL, WATERING, STAKING, GROUND AND MULCHING.

REMOVAL OF CONTACT WORK SHALL BE AS NOT LIMITED TO: SOIL PREPARATION, FINE OR FINISH GRADING, FURNISHING AND INSTALLING PLANT MATERIAL, WATERING, STAKING, GROUND AND MULCHING.

REMOVAL OF CONTACT WORK SHALL BE AS NOT LIMITED TO: SOIL PREPARATION, FINE OR FINISH GRADING, FURNISHING AND INSTALLING PLANT MATERIAL, WATERING, STAKING, GROUND AND MULCHING.

REMOVAL OF CONTACT WORK SHALL BE AS NOT LIMITED TO: SOIL PREPARATION, FINE OR FINISH GRADING, FURNISHING AND INSTALLING PLANT MATERIAL, WATERING, STAKING, GROUND AND MULCHING.

REMOVAL OF CONTACT WORK SHALL BE AS NOT LIMITED TO: SOIL PREPARATION, FINE OR FINISH GRADING, FURNISHING AND INSTALLING PLANT MATERIAL, WATERING, STAKING, GROUND AND MULCHING.

REMOVAL OF CONTACT WORK SHALL BE AS NOT LIMITED TO: SOIL PREPARATION, FINE OR FINISH GRADING, FURNISHING AND INSTALLING PLANT MATERIAL, WATERING, STAKING, GROUND AND MULCHING.

REMOVAL OF CONTACT WORK SHALL BE AS NOT LIMITED TO: SOIL PREPARATION, FINE OR FINISH GRADING, FURNISHING AND INSTALLING PLANT MATERIAL, WATERING, STAKING, GROUND AND MULCHING.

REMOVAL OF CONTACT WORK SHALL BE AS NOT LIMITED TO: SOIL PREPARATION, FINE OR FINISH GRADING, FURNISHING AND INSTALLING PLANT MATERIAL, WATERING, STAKING, GROUND AND MULCHING.

2. PLANTING TREES

REMOVAL OF CONTACT WORK SHALL BE AS NOT LIMITED TO: SOIL PREPARATION, FINE OR FINISH GRADING, FURNISHING AND INSTALLING PLANT MATERIAL, WATERING, STAKING, GROUND AND MULCHING.

REMOVAL OF CONTACT WORK SHALL BE AS NOT LIMITED TO: SOIL PREPARATION, FINE OR FINISH GRADING, FURNISHING AND INSTALLING PLANT MATERIAL, WATERING, STAKING, GROUND AND MULCHING.

REMOVAL OF CONTACT WORK SHALL BE AS NOT LIMITED TO: SOIL PREPARATION, FINE OR FINISH GRADING, FURNISHING AND INSTALLING PLANT MATERIAL, WATERING, STAKING, GROUND AND MULCHING.

REMOVAL OF CONTACT WORK SHALL BE AS NOT LIMITED TO: SOIL PREPARATION, FINE OR FINISH GRADING, FURNISHING AND INSTALLING PLANT MATERIAL, WATERING, STAKING, GROUND AND MULCHING.

REMOVAL OF CONTACT WORK SHALL BE AS NOT LIMITED TO: SOIL PREPARATION, FINE OR FINISH GRADING, FURNISHING AND INSTALLING PLANT MATERIAL, WATERING, STAKING, GROUND AND MULCHING.

REMOVAL OF CONTACT WORK SHALL BE AS NOT LIMITED TO: SOIL PREPARATION, FINE OR FINISH GRADING, FURNISHING AND INSTALLING PLANT MATERIAL, WATERING, STAKING, GROUND AND MULCHING.

REMOVAL OF CONTACT WORK SHALL BE AS NOT LIMITED TO: SOIL PREPARATION, FINE OR FINISH GRADING, FURNISHING AND INSTALLING PLANT MATERIAL, WATERING, STAKING, GROUND AND MULCHING.

REMOVAL OF CONTACT WORK SHALL BE AS NOT LIMITED TO: SOIL PREPARATION, FINE OR FINISH GRADING, FURNISHING AND INSTALLING PLANT MATERIAL, WATERING, STAKING, GROUND AND MULCHING.

REMOVAL OF CONTACT WORK SHALL BE AS NOT LIMITED TO: SOIL PREPARATION, FINE OR FINISH GRADING, FURNISHING AND INSTALLING PLANT MATERIAL, WATERING, STAKING, GROUND AND MULCHING.

REMOVAL OF CONTACT WORK SHALL BE AS NOT LIMITED TO: SOIL PREPARATION, FINE OR FINISH GRADING, FURNISHING AND INSTALLING PLANT MATERIAL, WATERING, STAKING, GROUND AND MULCHING.

REMOVAL OF CONTACT WORK SHALL BE AS NOT LIMITED TO: SOIL PREPARATION, FINE OR FINISH GRADING, FURNISHING AND INSTALLING PLANT MATERIAL, WATERING, STAKING, GROUND AND MULCHING.

REMOVAL OF CONTACT WORK SHALL BE AS NOT LIMITED TO: SOIL PREPARATION, FINE OR FINISH GRADING, FURNISHING AND INSTALLING PLANT MATERIAL, WATERING, STAKING, GROUND AND MULCHING.

REMOVAL OF CONTACT WORK SHALL BE AS NOT LIMITED TO: SOIL PREPARATION, FINE OR FINISH GRADING, FURNISHING AND INSTALLING PLANT MATERIAL, WATERING, STAKING, GROUND AND MULCHING.

REMOVAL OF CONTACT WORK SHALL BE AS NOT LIMITED TO: SOIL PREPARATION, FINE OR FINISH GRADING, FURNISHING AND INSTALLING PLANT MATERIAL, WATERING, STAKING, GROUND AND MULCHING.

REMOVAL OF CONTACT WORK SHALL BE AS NOT LIMITED TO: SOIL PREPARATION, FINE OR FINISH GRADING, FURNISHING AND INSTALLING PLANT MATERIAL, WATERING, STAKING, GROUND AND MULCHING.

REMOVAL OF CONTACT WORK SHALL BE AS NOT LIMITED TO: SOIL PREPARATION, FINE OR FINISH GRADING, FURNISHING AND INSTALLING PLANT MATERIAL, WATERING, STAKING, GROUND AND MULCHING.

REMOVAL OF CONTACT WORK SHALL BE AS NOT LIMITED TO: SOIL PREPARATION, FINE OR FINISH GRADING, FURNISHING AND INSTALLING PLANT MATERIAL, WATERING, STAKING, GROUND AND MULCHING.

REMOVAL OF CONTACT WORK SHALL BE AS NOT LIMITED TO: SOIL PREPARATION, FINE OR FINISH GRADING, FURNISHING AND INSTALLING PLANT MATERIAL, WATERING, STAKING, GROUND AND MULCHING.

REMOVAL OF CONTACT WORK SHALL BE AS NOT LIMITED TO: SOIL PREPARATION, FINE OR FINISH GRADING, FURNISHING AND INSTALLING PLANT MATERIAL, WATERING, STAKING, GROUND AND MULCHING.

REMOVAL OF CONTACT WORK SHALL BE AS NOT LIMITED TO: SOIL PREPARATION, FINE OR FINISH GRADING, FURNISHING AND INSTALLING PLANT MATERIAL, WATERING, STAKING, GROUND AND MULCHING.

REMOVAL OF CONTACT WORK SHALL BE AS NOT LIMITED TO: SOIL PREPARATION, FINE OR FINISH GRADING, FURNISHING AND INSTALLING PLANT MATERIAL, WATERING, STAKING, GROUND AND MULCHING.

REMOVAL OF CONTACT WORK SHALL BE AS NOT LIMITED TO: SOIL PREPARATION, FINE OR FINISH GRADING, FURNISHING AND INSTALLING PLANT MATERIAL, WATERING, STAKING, GROUND AND MULCHING.

REMOVAL OF CONTACT WORK SHALL BE AS NOT LIMITED TO: SOIL PREPARATION, FINE OR FINISH GRADING, FURNISHING AND INSTALLING PLANT MATERIAL, WATERING, STAKING, GROUND AND MULCHING.

REMOVAL OF CONTACT WORK SHALL BE AS NOT LIMITED TO: SOIL PREPARATION, FINE OR FINISH GRADING, FURNISHING AND INSTALLING PLANT MATERIAL, WATERING, STAKING, GROUND AND MULCHING.

REMOVAL OF CONTACT WORK SHALL BE AS NOT LIMITED TO: SOIL PREPARATION, FINE OR FINISH GRADING, FURNISHING AND INSTALLING PLANT MATERIAL, WATERING, STAKING, GROUND AND MULCHING.

REMOVAL OF CONTACT WORK SHALL BE AS NOT LIMITED TO: SOIL PREPARATION, FINE OR FINISH GRADING, FURNISHING AND INSTALLING PLANT MATERIAL, WATERING, STAKING, GROUND AND MULCHING.

REMOVAL OF CONTACT WORK SHALL BE AS NOT LIMITED TO: SOIL PREPARATION, FINE OR FINISH GRADING, FURNISHING AND INSTALLING PLANT MATERIAL, WATERING, STAKING, GROUND AND MULCHING.

REMOVAL OF CONTACT WORK SHALL BE AS NOT LIMITED TO: SOIL PREPARATION, FINE OR FINISH GRADING, FURNISHING AND INSTALLING PLANT MATERIAL, WATERING, STAKING, GROUND AND MULCHING.

REMOVAL OF CONTACT WORK SHALL BE AS NOT LIMITED TO: SOIL PREPARATION, FINE OR FINISH GRADING, FURNISHING AND INSTALLING PLANT MATERIAL, WATERING, STAKING, GROUND AND MULCHING.

REMOVAL OF CONTACT WORK SHALL BE AS NOT LIMITED TO: SOIL PREPARATION, FINE OR FINISH GRADING, FURNISHING AND INSTALLING PLANT MATERIAL, WATERING, STAKING, GROUND AND MULCHING.

REMOVAL OF CONTACT WORK SHALL BE AS NOT LIMITED TO: SOIL PREPARATION, FINE OR FINISH GRADING, FURNISHING AND INSTALLING PLANT MATERIAL, WATERING, STAKING, GROUND AND MULCHING.