

GENERAL NOTES - EXTERIOR ELEVATIONS

- A. ALL PAINT COLOR CHANGES TO OCCUR AT INSIDE CORNERS UNLESS NOTED OTHERWISE.
- B. ALL PAINT FINISHES ARE TO BE FLAT UNLESS NOTED OTHERWISE.
- C. T.O.P. EL. = TOP OF PARAPET ELEVATION.
- D. F.F. = FINISH FLOOR ELEVATION.
- E. STOREFRONT CONSTRUCTION, GLASS, METAL ATTACHMENTS AND LINTELS SHALL BE DESIGNED TO RESIST REQUIRED WINDLOAD EXPOSURE TO WINDS. CONTRACTOR SHALL SUBMIT SHOP DRAWINGS PRIOR TO INSTALLATION.
- F. CONTRACTOR SHALL FULLY PAINT ONE CONCRETE PANEL W/ SELECTED COLORS. ARCHITECT AND OWNER SHALL APPROVE PRIOR TO PAINTING REMAINDER OF BUILDING.
- G. BACK SIDE OF PARAPETS TO HAVE SMOOTH FINISH AND BE PAINTED WITH ELASTOMERIC PAINT.
- H. FOR SPANDREL GLAZING, ALLOW SPACE BEHIND SPANDREL TO BREATHE.
- I. USE ADHESIVE BACKED WOOD STRIPS FOR ALL REVEAL FORMS.
- J. THE FIRST COAT OF PAINT TO BE ROLLED-ON AND THE SECOND COAT TO BE SPRAYED-ON.
- K. EXTERIOR STAIRS AND RAMPS TO MATCH BUILDING COLOR.
- L. ALL DOORS TO BE PAINTED THE SAME COLOR AS THE ADJACENT WALL.

KEYNOTES - EXTERIOR ELEVATION

NOTE: ALL KEYNOTES MAY NOT BE USED ON THIS SHEET

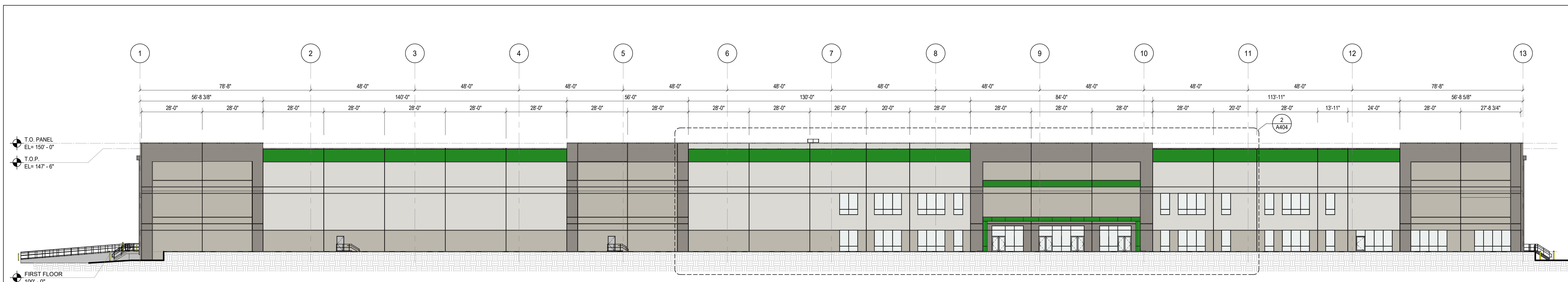
NO.	DESCRIPTION
1	CONCRETE TILT-UP PANEL PAINT SHERWIN WILLIAMS SW 7646 - "FIRST STAR"
2	CONCRETE TILT-UP PANEL PAINT SHERWIN WILLIAMS SW 7016 - "MINDFUL GRAY"
3	CONCRETE TILT-UP PANEL PAINT SHERWIN WILLIAMS SW 7018 - "DOVE TAIL"
4	CONCRETE TILT-UP PANEL PAINT HEX #248823 - "WEB FOREST GREEN"
5	INSULATED METAL PANEL LIGHT GREY
6	PREFINISHED METAL PARAPET CAP
7	VISION GLASS IN ANODIZED ALUMINUM FRAME
8	ALUMINUM COMPOSITE MATERIAL CANOPY
9	PREFINISHED COLLECTOR BOX AND DOWNSPOUT
10	OVERHEAD DOCK DOOR, TYP.
11	FIRE DEPT. ACCESS DOOR AND STAIR, TYP.
12	HORIZONTAL REVEAL, TYP.
13	VERTICAL REVEAL, TYP.

MATERIAL & KEYNOTE LEGEND

- | | | | |
|---|--|----|---|
| 1 | CONCRETE TILT-UP PANEL PAINT SHERWIN WILLIAMS SW 7646 - "FIRST STAR" | 6 | PREFINISHED METAL PARAPET CAP |
| 2 | CONCRETE TILT-UP PANEL PAINT SHERWIN WILLIAMS SW 7016 - "MINDFUL GRAY" | 7 | VISION GLASS IN ANODIZED ALUMINUM FRAME |
| 3 | CONCRETE TILT-UP PANEL PAINT SHERWIN WILLIAMS SW 7018 - "DOVE TAIL" | 8 | ALUMINUM COMPOSITE MATERIAL CANOPY |
| 4 | CONCRETE TILT-UP PANEL PAINT HEX #248823 - "WEB FOREST GREEN" | 9 | PREFINISHED COLLECTOR BOX AND DOWNSPOUT |
| 5 | INSULATED METAL PANEL LIGHT GREY | 10 | OVERHEAD DOCK DOOR |



NO.	DATE	DESCRIPTION



1 ELEVATION - WEST
 1" = 20'-0"

MATERIAL & KEYNOTE LEGEND

1	CONCRETE TILT-UP PANEL PAINT SHERWIN WILLIAMS SW 7646 - "FIRST STAR"	6	PREFINISHED METAL PARAPET CAP
2	CONCRETE TILT-UP PANEL PAINT SHERWIN WILLIAMS SW 7016 - "MINDFUL GRAY"	7	VISION GLASS IN ANODIZED ALUMINUM FRAME
3	CONCRETE TILT-UP PANEL PAINT SHERWIN WILLIAMS SW 7018 - "DOVE TAIL"	8	ALUMINUM COMPOSITE MATERIAL CANOPY
4	CONCRETE TILT-UP PANEL PAINT HEX #248823 - "WEB FOREST GREEN"	9	PREFINISHED COLLECTOR BOX AND DOWNSPOUT
5	INSULATED METAL PANEL LIGHT GREY	10	OVERHEAD DOCK DOOR

GENERAL NOTES - EXTERIOR ELEVATIONS

- A. ALL PAINT COLOR CHANGES TO OCCUR AT INSIDE CORNERS UNLESS NOTED OTHERWISE.
- B. ALL PAINT FINISHES ARE TO BE FLAT UNLESS NOTED OTHERWISE.
- C. T.O.P. EL. = TOP OF PARAPET ELEVATION.
- D. P.F. = FINISH FLOOR ELEVATION.
- E. STOREFRONT CONSTRUCTION: GLASS, METAL ATTACHMENTS AND LINTELS SHALL BE DESIGNED TO RESIST REQUIRED WINDLOAD EXPOSURE "C" WINDS. CONTRACTOR SHALL SUBMIT SHOP DRAWINGS PRIOR TO INSTALLATION.
- F. CONTRACTOR SHALL FULLY PAINT ONE CONCRETE PANEL W/ SELECTED COLORS. ARCHITECT AND OWNER SHALL APPROVE PRIOR TO PAINTING REMAINDER OF BUILDING.
- G. BACK SIDE OF PARAPETS TO HAVE SMOOTH FINISH AND BE PAINTED WITH ELASTOMERIC PAINT.
- H. FOR SPANDREL GLAZING, ALLOW SPACE BEHIND SPANDREL TO BREATHE.
- I. USE ADHESIVE BACKED WOOD STRIPS FOR ALL REVEAL FORMS.
- J. THE FIRST COAT OF PAINT TO BE ROLLED-ON AND THE SECOND COAT TO BE SPRAYED-ON.
- K. EXTERIOR STAIRS AND RAMPS TO MATCH BUILDING COLOR.
- L. ALL DOORS TO BE PAINTED THE SAME COLOR AS THE ADJACENT WALL.

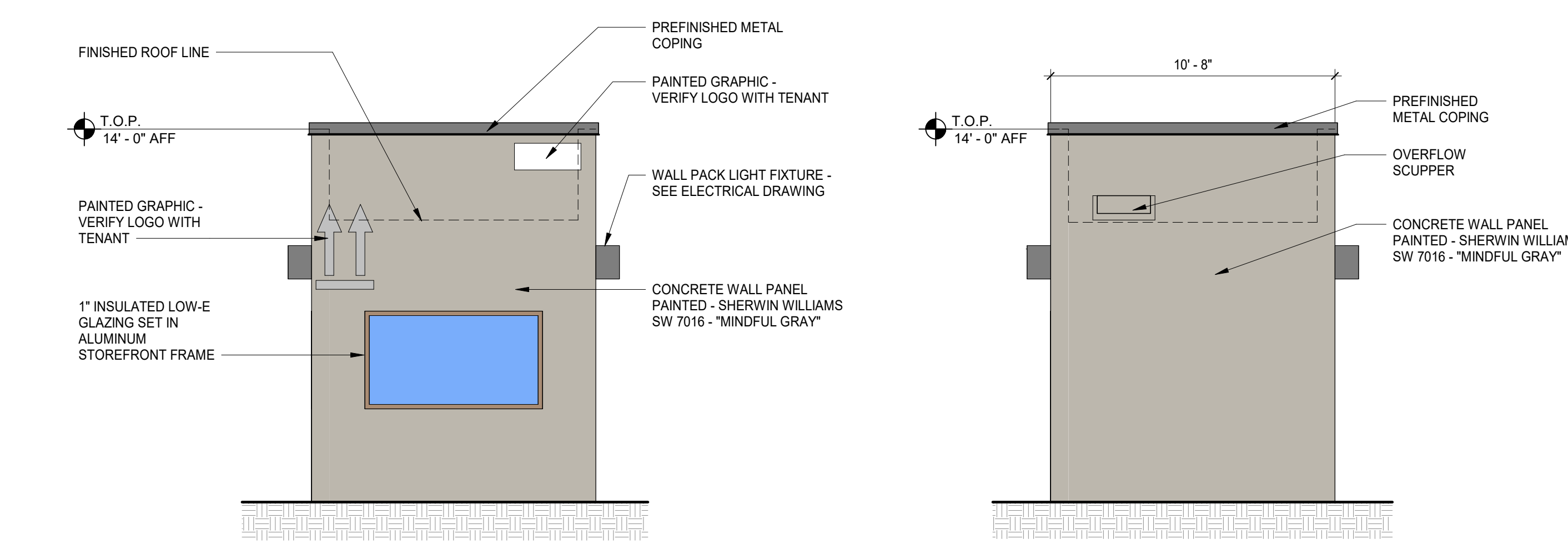
KEYNOTES - EXTERIOR ELEVATION

NOTE: ALL KEYNOTES MAY NOT BE USED ON THIS SHEET

NO.	DESCRIPTION
1	CONCRETE TILT-UP PANEL PAINT SHERWIN WILLIAMS SW 7646 - "FIRST STAR"
2	CONCRETE TILT-UP PANEL PAINT SHERWIN WILLIAMS SW 7016 - "MINDFUL GRAY"
3	CONCRETE TILT-UP PANEL PAINT SHERWIN WILLIAMS SW 7018 - "DOVE TAIL"
4	CONCRETE TILT-UP PANEL PAINT HEX #248823 - "WEB FOREST GREEN"
5	INSULATED METAL PANEL LIGHT GREY
6	PREFINISHED METAL PARAPET CAP
7	VISION GLASS IN ANODIZED ALUMINUM FRAME
8	ALUMINUM COMPOSITE MATERIAL CANOPY
9	PREFINISHED COLLECTOR BOX AND DOWNSPOUT
10	OVERHEAD DOCK DOOR, TYP.
11	FIRE DEPT. ACCESS DOOR AND STAIR, TYP.
12	HORIZONTAL REVEAL, TYP.
13	VERTICAL REVEAL, TYP.

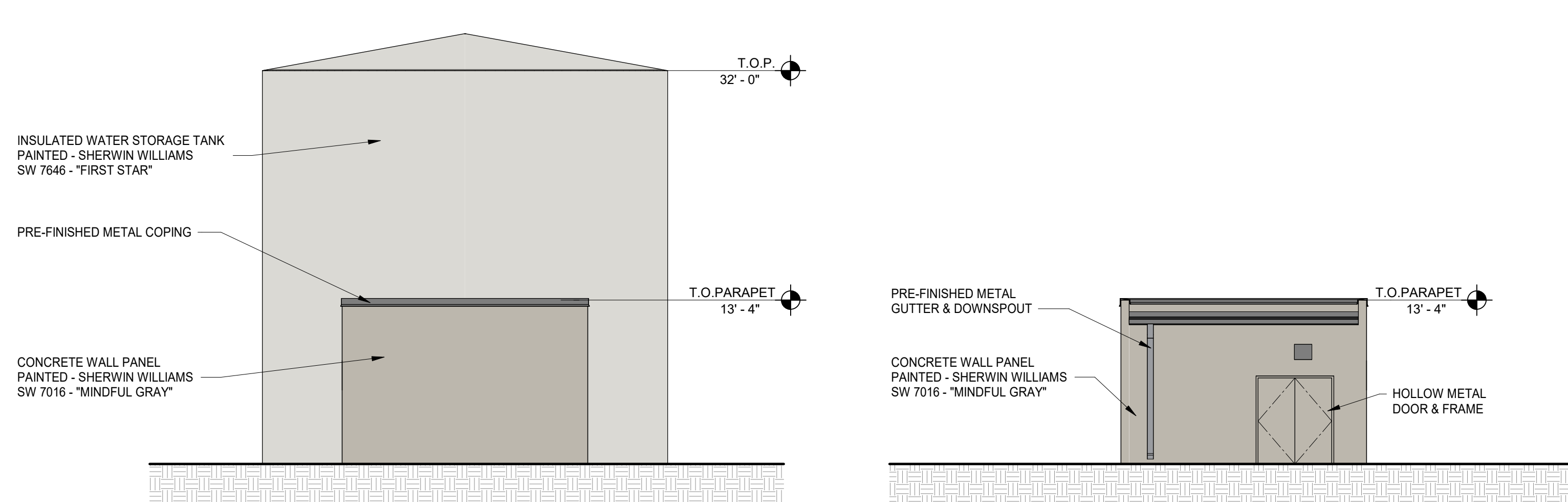


2 PARTIAL WEST ELEVATION
 1/8" = 1'-0"



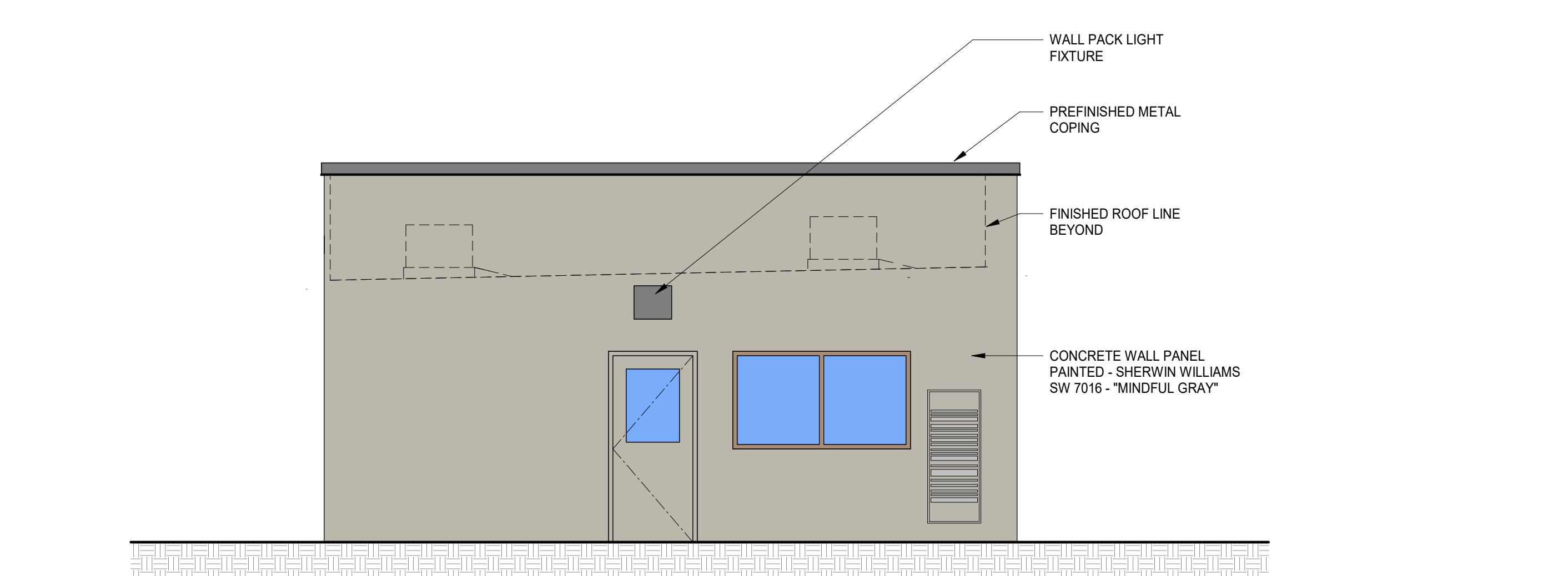
1 GUARD HOUSE ELEVATION - WEST
 1/4" = 1'-0"

2 GUARD HOUSE ELEVATION - EAST
 1/4" = 1'-0"

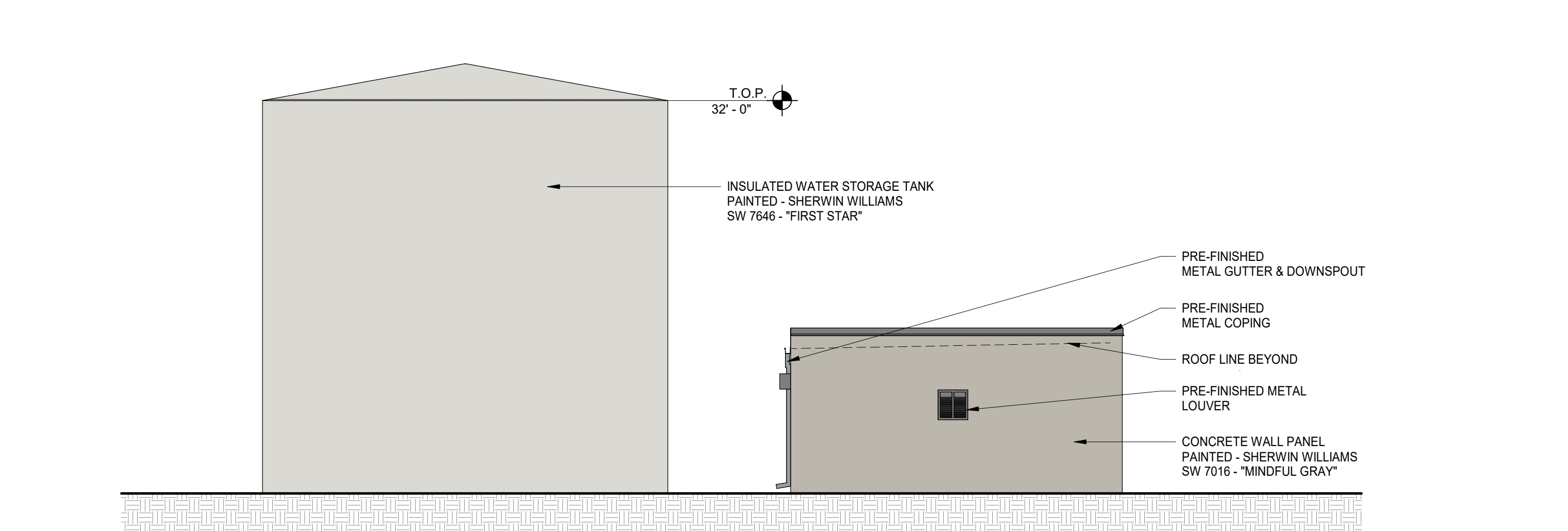


6 PUMP HOUSE ELEVATION - WEST
 1/8" = 1'-0"

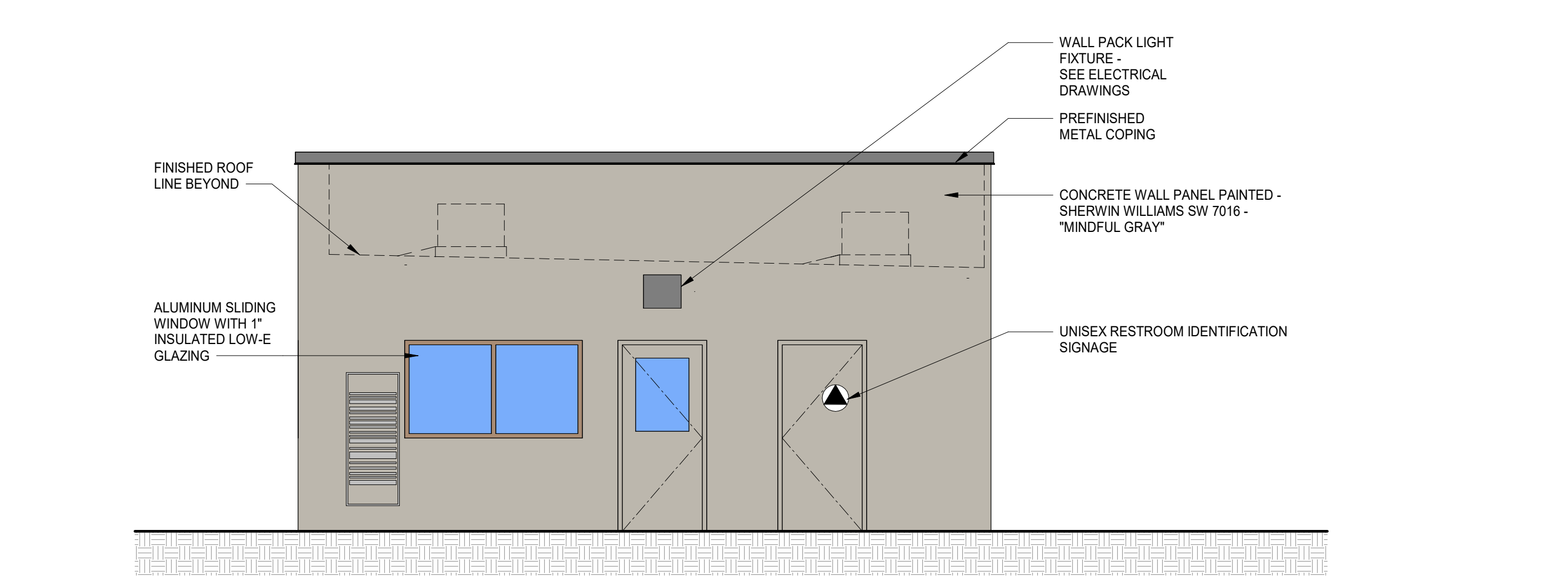
7 PUMP HOUSE ELEVATION - EAST
 1/8" = 1'-0"



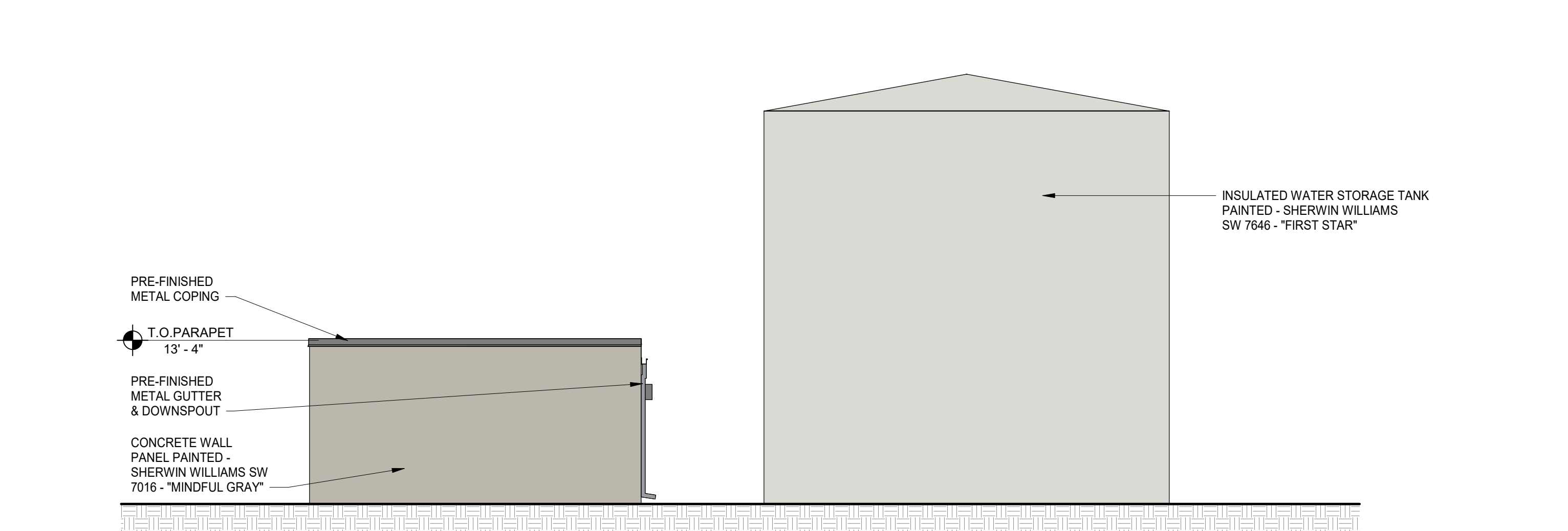
3 GUARD HOUSE ELEVATION - NORTH
 1/4" = 1'-0"



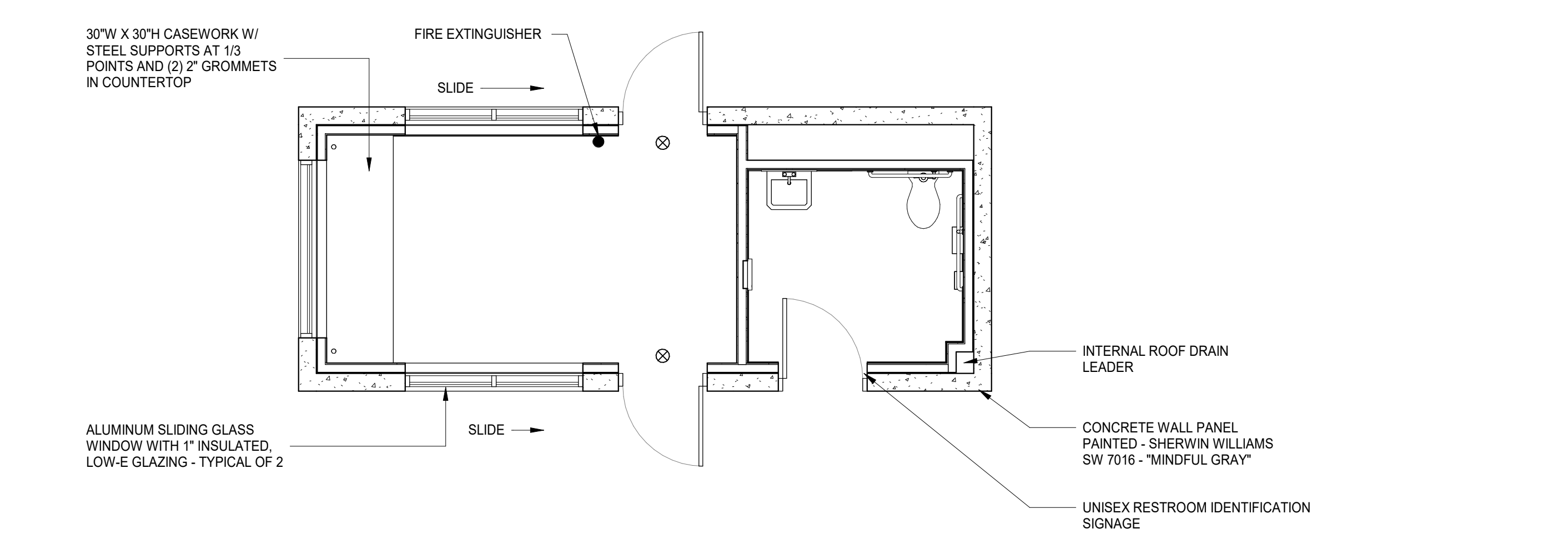
8 PUMP HOUSE ELEVATION - NORTH
 1/8" = 1'-0"



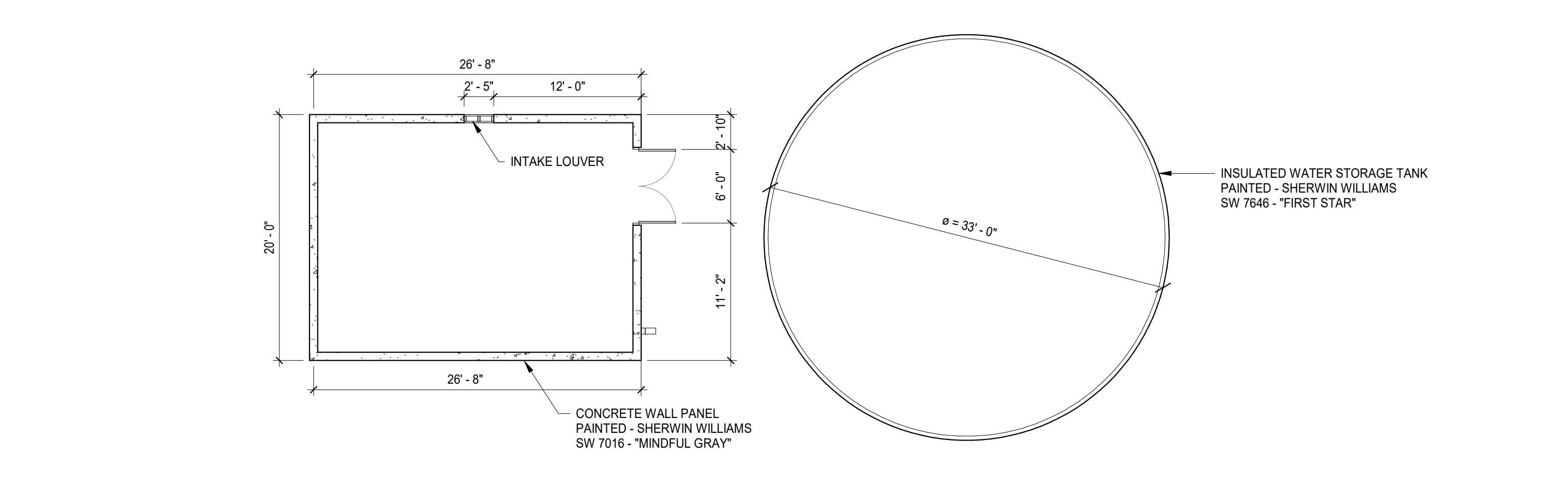
4 GUARD HOUSE ELEVATION - SOUTH
 1/4" = 1'-0"



9 PUMP HOUSE ELEVATION - SOUTH
 1/8" = 1'-0"



5 GUARDHOUSE FLOOR PLAN
 1/4" = 1'-0"



10 PUMP HOUSE FLOOR PLAN
 1/8" = 1'-0"