

### Existing Tree Chart

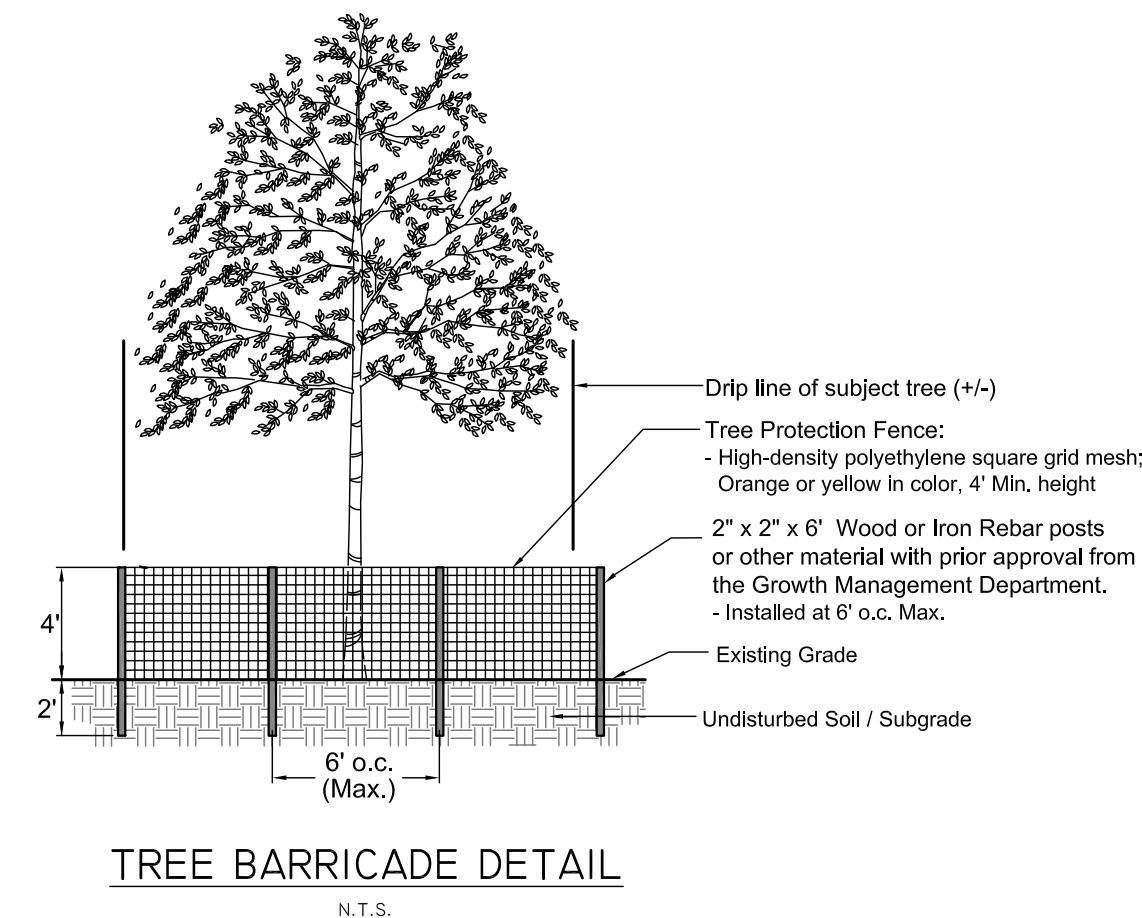
Tag #	Common Name	DBH	Height of Clear Trunk	Protected	* Condition	Status
1	Slash Pine	13		No	Good	Preserve
2	Cabbage Palm		12'-14'	Yes	Fair	Remove
3	Slash Pine	16		Yes	Good	Preserve
4	Cabbage Palm		18'-20'	Yes	Good	Remove
5	Slash Pine	20		Yes	Good	Preserve
6	Slash Pine	13		No	Good	Preserve
7	Cabbage Palm		10'	Yes	Good	Preserve
8	Cabbage Palm		13'-14'	Yes	Good	Preserve
9	Cabbage Palm		10'	Yes	Fair	Remove
10	Slash Pine	18		Yes	Good	Preserve
11	Slash Pine	18		Yes	Good	Remove
12	Cabbage Palm		14'-15'	Yes	Fair	Remove
13	Slash Pine	14		Yes	Good	Remove
14	Slash Pine	16		Yes	Good	Remove
15	Slash Pine	15		Yes	Good	Remove
16	Slash Pine	16		Yes	Good	Remove
17	Live Oak	15		Yes	Fair	Remove
18	Slash Pine	13		No	Fair	Remove
19	Live Oak	16		Yes	Fair	Remove
20	Cabbage Palm		10'-12'	Yes	Fair	Remove
21	Slash Pine	14		Yes	Good	Remove
22	Cabbage Palm		14'-15'	Yes	Fair	Remove
23	Live Oak	16		Yes	Fair	Remove
24	Live Oak	18		Yes	Fair	Remove
25	Slash Pine	13		No	Fair	Remove
26	Slash Pine	17		Yes	Good	Remove
27	Slash Pine	16		Yes	Good	Remove
28	Live Oak	17		Yes	Poor	Remove
29	Slash Pine	19		Yes	Good	Preserve

#### Note:

1. Condition of existing trees rated as "Poor" have not been included or calculated towards required inches for tree replacement.

### Existing Tree Chart Summary

Protected Tree Inches (DBH) to be Removed:	191 Inches
Tree Inches (DBH) to be Preserved:	99 Inches
Protected Palm Trees to be Removed:	6 Trees
Protected Palm Trees to be Preserved:	2 Trees

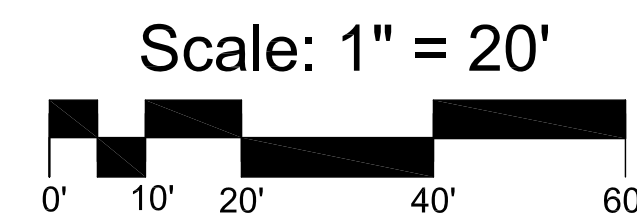


#### TREE PROTECTION NOTES

- Existing trees that are to be preserved shall be barricaded according to municipality regulations.
- Tree Protection Barricades shall be erected prior to the commencement of any work. All barricades must be maintained intact for the duration of construction.
- Barricades must be constructed around the critical protection zone of each tree or cluster of trees.
- During periods of development and construction, the areas within the drip-line of preserved trees shall be maintained at their original grade with pervious landscape material. Within these areas, there shall be:
  - No trenching or cutting of roots
  - No fill, compaction or removal of soil; and
  - No use of concrete, paint, chemicals or other foreign substances
- Barricades shall be constructed of a yellow or orange high density polyethylene square grid mesh with a min. height of 4 feet. Fencing shall be secured to posts with nylon cable ties at the top middle and bottom of each post. Posts shall be a 2x2x6 wood or iron rebar or other material with prior approval from Municipality. Posts shall be spaced a max. of 6' o.c.

### Legend

- # (Tree with dashed circle) Existing Protected Tree to be Preserved Typ.
- # (Tree with solid circle) Existing Protected Tree to be Removed Typ.



3500 SW Corporate Parkway, Suite 203  
Palm City, Florida 34990  
T 772.678.7200  
www.hjadesignstudio.com  
LA 0000905

# 25th Street Mixed Use Development

## City of Fort Pierce Existing Tree Survey / Removal Plan

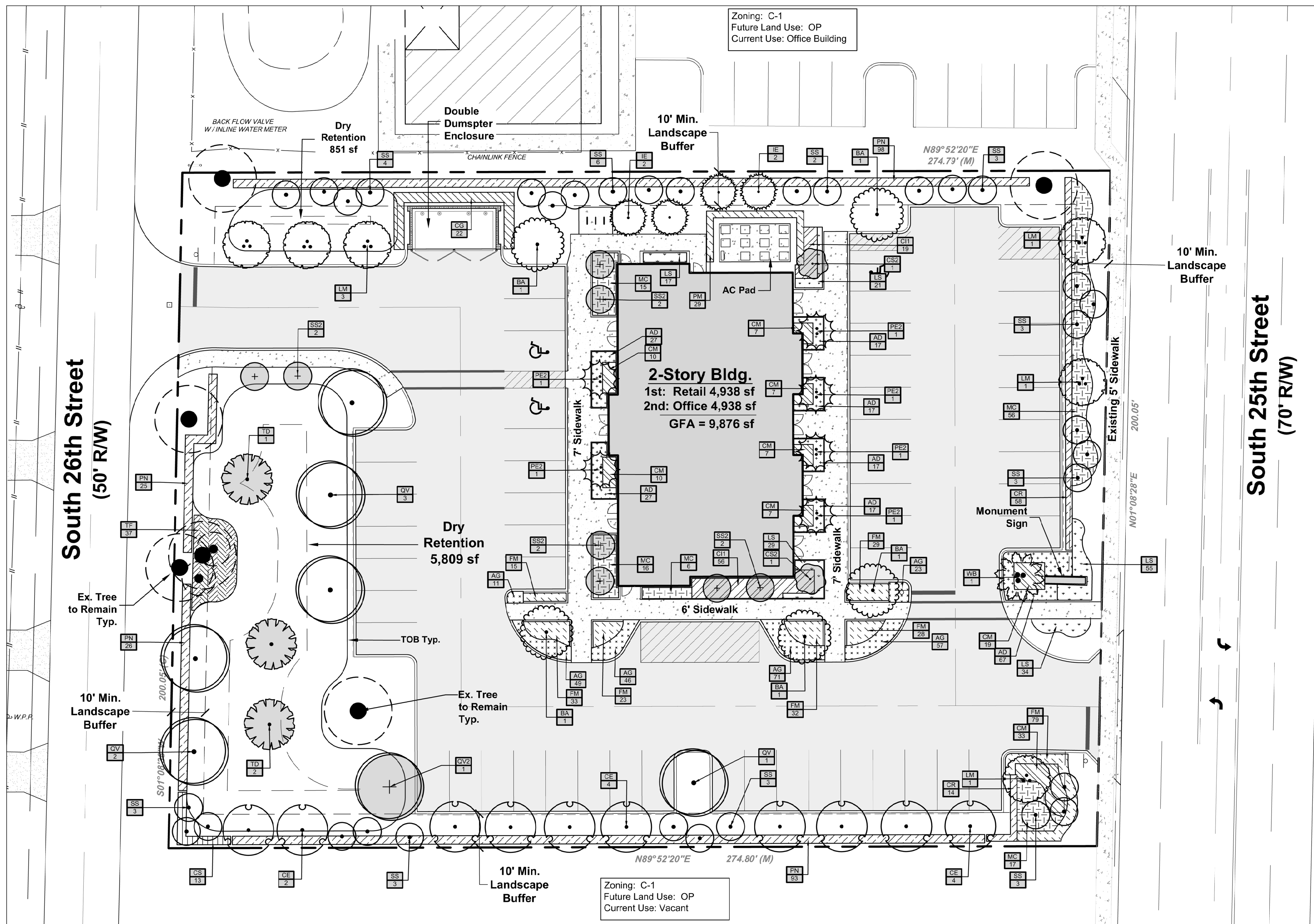
Florida

Copyright  
The following drawings are instruments of service to the Landscape Architect. They are not products of design. All ideas, designs, arrangements, and plans indicated or represented by this drawing are owned by and the property of the designer, and were created, evolved, and developed for use on and in connection with the specified project. None of such ideas, designs, arrangements, or plans shall be used by or disclosed to any person, firm, or corporation for any purpose whatsoever without the written permission of the designer.

Job No. 2024-34  
Drawn By TT  
Checked By MH  
Approved By MH  
Submittal Dates 9-29-25

Revision Dates

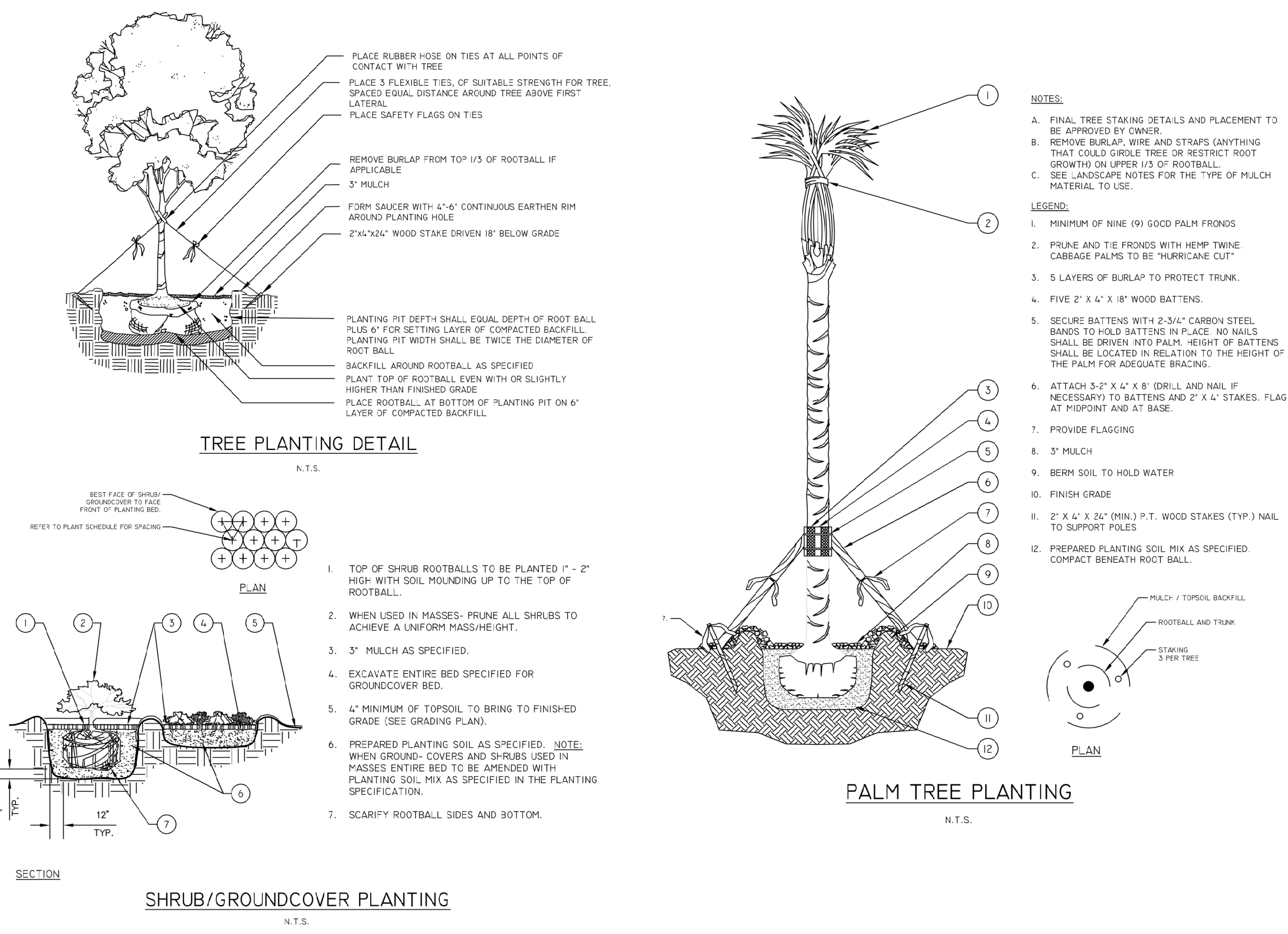
LP-1



**Fort Pierce Landscape Notes**

- Plant materials shall meet or exceed the standards for Florida No. 1 as set out in the most current edition of "Grades and Standards for Nursery Plants Part 1 and Part 2," State of Florida, Department of Agriculture, Tallahassee.
- All trees required by this article (excluding palms that are exempt from the grades and standards) shall have a Florida No. 1 or better "Grades and Standards" certification tag attached at time of delivery through final inspection.
- Grass sod shall be clean and free of weeds, pests and diseases.
- Planting soil for all landscaped areas shall consist of existing soil mixed with fifty (50) per cent recycled top soil. Such planting soil shall be generally indigenous to the locale, free of debris, roots, clogs, stones, plants or other foreign materials. The planting soil shall extend to an appropriate depth so as to eliminate any hindrance to planting operations or detriment to good plant growth. Compliance with these soil requirements shall be verified as part of the final inspection.
- Landscaped areas shall be covered in their entirety with shrubs, ground cover, turf, or three (3) inches of bulk organic mulch or other suitable material which permits percolation and is approved by the department.
- Do not place any soil or mulch over the root ball. If stakes or guide wires are used to support a tree, the wire must be covered with protective material where it is in contact with the tree and the stakes or guide wires must be removed after one year.
- All landscaping must be protected from vehicular and pedestrian traffic by the installation of curbing, wheel stops or other protective devices along the perimeter of any landscaping which adjoins vehicular use areas or sidewalks. These protected devices shall have a minimum height of six (6) inches above grade.
- No parking, display of vehicles or outside storage or display of merchandise is permitted in or over any required landscape area, nor are vehicles permitted to overhang any required landscaped area.
- To minimize traffic hazards at street or driveway intersections, all landscaping installations must provide unobstructed views.
- Any irrigation system placed on city right-of-way will be the responsibility of the property owner who shall relocate, replace or repair the system as appropriate in the event it is damaged due to permitted construction in the right-of-way.
- Prior to issuance of certificate of occupancy, final landscape installation shall be certified as complete and in conformance to the approved landscape plan by submission of a certification letter by a landscape architect.
- Property owners shall maintain all required landscaping so that it continues to present a healthy, neat and orderly appearance free of refuse and debris.
- Vegetation required shall be replaced with equivalent vegetation if it is not living. All trees for which credit is awarded and which subsequently die shall be replaced by the same number of living trees.
- Maintenance shall include sufficient weeding, watering, fertilizing, pruning, mowing, edging, mulching and other horticultural practices so as to assure that the landscaping continues to maintain a healthy, neat and orderly appearance.
- No person shall, directly or indirectly, cut down, substantially alter, destroy, remove, relocate, damage or authorize any such act involving a protected tree situated on land within the city, without first obtaining a tree removal permit.
- Removal, trimming, pruning or alteration of any tree or vegetation in an existing utility easement or public right-of-way, provided such work is done by or under the control of the operating utility company and said company has received all necessary licenses or permits to provide utility service within the easement.
- This plan has been designed to meet the tree planting requirements contained within the FPL document entitled "Plant the Right Tree in the Right Place". For existing or proposed utilities, no tree shall be planted where it could, at a mature height conflict with overhead power lines.
  - Large trees (height at maturity of more than 30') shall be planted no closer than a horizontal distance of 30' from the nearest overhead power line.
  - Medium height trees (height at maturity between 20' and 30') shall be offset at least 20' and small trees (height at maturity of less than 20') require no offset.
  - No tree shrubs, hedges or vines shall be planted within 5' of an existing or proposed utility pole, guy wire or pad-mounted transformer.
  - Palms should be planted at a distance equal to or greater than the average frond length plus two (2) feet from power lines.

**Landscape Details**



**Landscape Data**

**Landscape Strip Adjacent to Street R.O.W**

Ten (10) feet wide minimum landscape Strip. One (1) tree for each three hundred (300) square feet of required landscaped area.

**South 25th Street (East) :** 135 LF x 10 = 1,350 sf

Trees Required: ( 1,350 sf / 300 ) = 5 Trees  
 Trees Provided: = 5 Trees  
 (2 Trees +9 Palms @ 3:1)

**South 26th Street (West) :** 149.5 LF x 10 = 1,495 sf

Trees Required: ( 1,495 sf / 300 ) = 5 Trees  
 Trees Provided: = 5 Trees  
 (2 Trees + 3 Existing Trees)

**Landscape Strip Adjacent to Abutting Property**

Ten (10) feet wide minimum landscape Strip. One (1) tree for each two hundred (200) square feet of required landscaped area.

**North Property :** 255 LF x 10 = 2,550 sf

Trees Required: ( 2,550 sf / 200 ) = 13 Trees  
 Trees Provided: = 13 Trees  
 (7 Trees + 1 Existing Tree + 5 Palms @ 3:1)

**South Property :** 255 LF x 10 = 2,550 sf

Trees Required: ( 2,550 sf / 200 ) = 13 Trees  
 Trees Provided: = 13 Trees  
 (10 Trees + 9 Palms @ 3:1)

**Interior Vehicular Use Areas**

Vehicular use areas that are four thousand (4,000) or more square feet in size shall have at least one square foot of interior landscaping for each fifteen (15) square feet of vehicular use area. One tree for each one hundred (100) square feet of required landscaped area. Each separate landscaped area shall be curbed and contain a minimum of one hundred (100) square feet of area and shall be at least ten (10) feet wide and ten (10) feet deep exclusive of curbing in all locations.

**Vehicular Use Area:** 23,987 sf

Landscape Area Required: ( 23,987 sf / 15 sf ) = 1,599 sf  
 Landscape Area Provided: = 7,022 sf

Trees Required: ( 1,599 LF / 100 ) = 16 Trees  
 Trees Provided: = 16 Trees  
 (10 Trees + 2 Existing Trees + 6 Palms @ 2:1 + 1 Palms @ 1:1)

**Tree Mitigation Data**

**Protected Trees**

Protected Tree Inches (DBH) to be Removed: 191 Inches  
 Tree Inches (DBH) to be Preserved: 99 Inches  
**Total Required Inches for Tree Replacement: 92 Inches**  
 Provided On-site Replacement: (6 Trees @ 2.5' / 2 ) 7.5 Inches  
 Remaining Inches to be Paid into Fund: 84.5 Inches

**Protected Palm Trees**

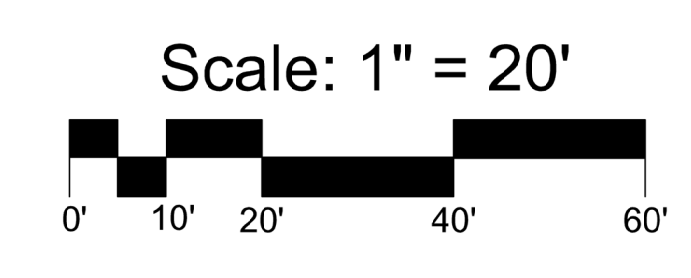
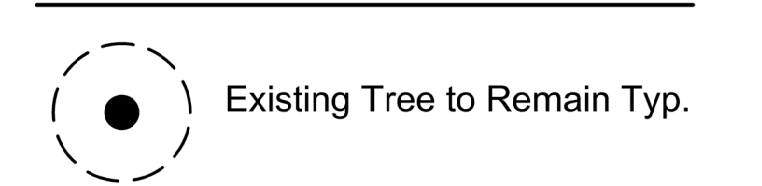
Protected Palm Trees to be Removed: 6 Trees  
 Protected Palm Trees to be Preserved: 2 Trees  
**Total Required Palm Replacement: 4 Trees**  
 Required On-site Palm Replacement: (4 Palm Trees x 2) 8 Trees  
 Provided On-site Palm Replacement: 8 Trees

**Landscape Schedules**

TREE SCHEDULE					
SYMBOL	CODE	QTY	BOTANICAL / COMMON NAME	SIZE	NATIVE
<b>CODE TREES</b>					
BA	5	Bulnesia arborea / Verawood	(1:1 Ratio)	2.5" Cal., 12' Ht. x 5' Spr. Min., Std., 5' ct.	No
CE	10	Conocarpus erectus / Green Buttonwood	(1:1 Ratio)	2.5" Cal., 12' Ht. x 5' Spr. Min., Std., 5' ct.	Yes
IE	4	Ilex x attenuata 'Eagleston' / Eagleston Holly	(1:1 Ratio)	2.5" Cal., 12' Ht. x 5' Spr. Min., Std., 5' ct.	Yes
LM	6	Lagerstroemia indica 'Muskogee' / Crape Myrtle	(1:1 Ratio)	2.5" Cal., 12' Ht. x 5' Spr. Min., Multi-trunk, 5' ct.	No
PE2	6	Ptychosperma elegans / Alexander Palm	(2:1 Ratio)	10' - 12' CT., Double Specimen	No
QV	6	Quercus virginiana / Live Oak	(1:1 Ratio)	2.5" Cal., 12' Ht. x 5' Spr. Min., Std., 5' ct.	Yes
SS	33	Sabal palmetto / Cabbage Palm	(3:1 Ratio)	11 @ 14' ct., 11 @ 16' ct., 11 @ 18' ct., Slick Trunk	Yes
WB	1	Wodyetia bifurcata / Foxtail Palm	(1:1 Ratio)	10' - 12' CT., Triple Specimen	No
<b>TREE MITIGATION</b>					
CS2	2	Conocarpus erectus 'Sericus' / Silver Buttonwood		2.5" Cal., 12' Ht. x 5' Spr. Min., Std., 5' ct.	Yes
QV2	1	Quercus virginiana / Live Oak		2.5" Cal., 12' Ht. x 5' Spr. Min., Std., 5' ct.	Yes
SS2	8	Sabal palmetto / Cabbage Palm		17' - 18' ct., Slick	Yes
TD	3	Taxodium distichum / Bald Cypress		2.5" Cal., 12' Ht. x 5' Spr. Min., Std., 5' ct.	Yes

SHRUB SCHEDULE					
CODE	QTY	BOTANICAL / COMMON NAME	SIZE	NATIVE	SPACING
<b>SHRUB AREAS</b>					
AG	257	Arachis glabrata / Perennial Peanut	1 gal., 8" - 12" Spr., Full	Yes	15" o.c.
AD	189	Asparagus densiflorus 'Myers' / Foxtail Fern	3 gal., 12" - 14" Ht., Full	No	20" o.c.
CI1	75	Chrysobalanus icaco 'Horizontal' / Horizontal Cocoplum	3 gal., 12" - 16" Ht., Full	Yes	24" o.c.
CR	72	Chrysobalanus icaco 'Red Tip' / Red Tip Cocoplum	3 gal., 24" Ht. Min.	Yes	24" o.c.
CG	22	Klusia guttifera / Small Leaf Klusia	7 gal., 36" - 42" Ht., Full	Yes	36" o.c.
CM	100	Codiaeum variegatum 'Mammy' / Mammy Croton	3 gal., 14" - 16" Ht., Full	No	24" o.c.
CS	13	Conocarpus erectus 'Sericus' / Silver Buttonwood	3 gal., 24" Ht. Min.	Yes	30" o.c.
MF	239	Ficus microcarpa 'Green Island' / Green Island Ficus	3 gal., 12" Ht. x 12" - 14" Spr.	No	18" o.c.
LS	156	Liriope muscari 'Super Blue' / Super Blue Liriope	1 gal., 10-12" Ht., Full	No	18" o.c.
MC	110	Muhlenbergia capillaris / Pink Muhly	1 gal., 14 - 16" Ht., Full	Yes	36" o.c.
PM	29	Podocarpus macrophyllus / Yew Podocarpus	7 gal., 36" - 42" Ht. x 24" Spr., Full	No	24" o.c.
PN	242	Psychotria nervosa / Wild Coffee	3 gal., 24" Ht., Full	Yes	30" o.c.
TF	37	Tripsacum dactyloides / Fakahatchee Grass	1 gal., 18" - 24" Ht. Full	Yes	36" o.c.

**Legend**



3500 SW Corporate Parkway, Suite 203  
 Palm City, Florida 34990

T 772.678.7200  
 www.hjadesignstudio.com  
 LA 0000905

**25th Street Mixed Use Development**  
**City of Fort Pierce**  
**Landscape Plan**  
**Florida**

Copyright  
 The following drawings are instruments of service to the Landscape Architect. They are not products of design. All ideas, designs, arrangements, and plans indicated or represented by this drawing are owned by and the property of the designer, and were created, devised and developed for use on and in connection with this specified project. None of such ideas, designs, arrangements, or plans shall be used by or disclosed to any person, firm, or corporation for any purpose whatsoever without the written permission of the designer.

Job No. 2024-34  
 Drawn By TT  
 Checked By MH  
 Approved By MH  
 Submittal Dates 9-29-25  
 Revision Dates

