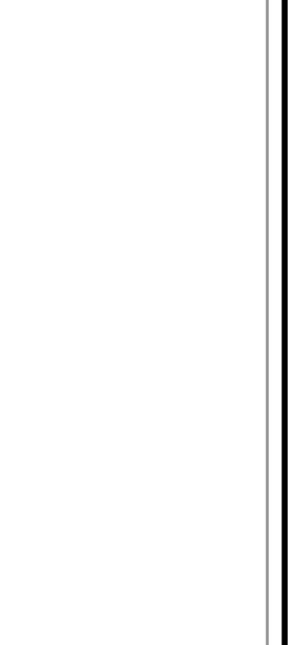
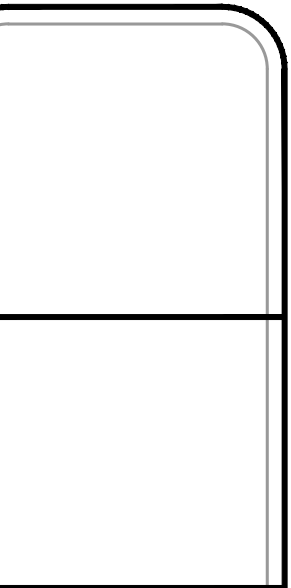


KEY PLAN 
NORTH

revision	date



PRECISION TECHNICAL
 1807 W. 23RD FL 34979
 FORT PIERCE, FL 34979
 JohnMortell, LLC@gmail.com
 772-528-0416



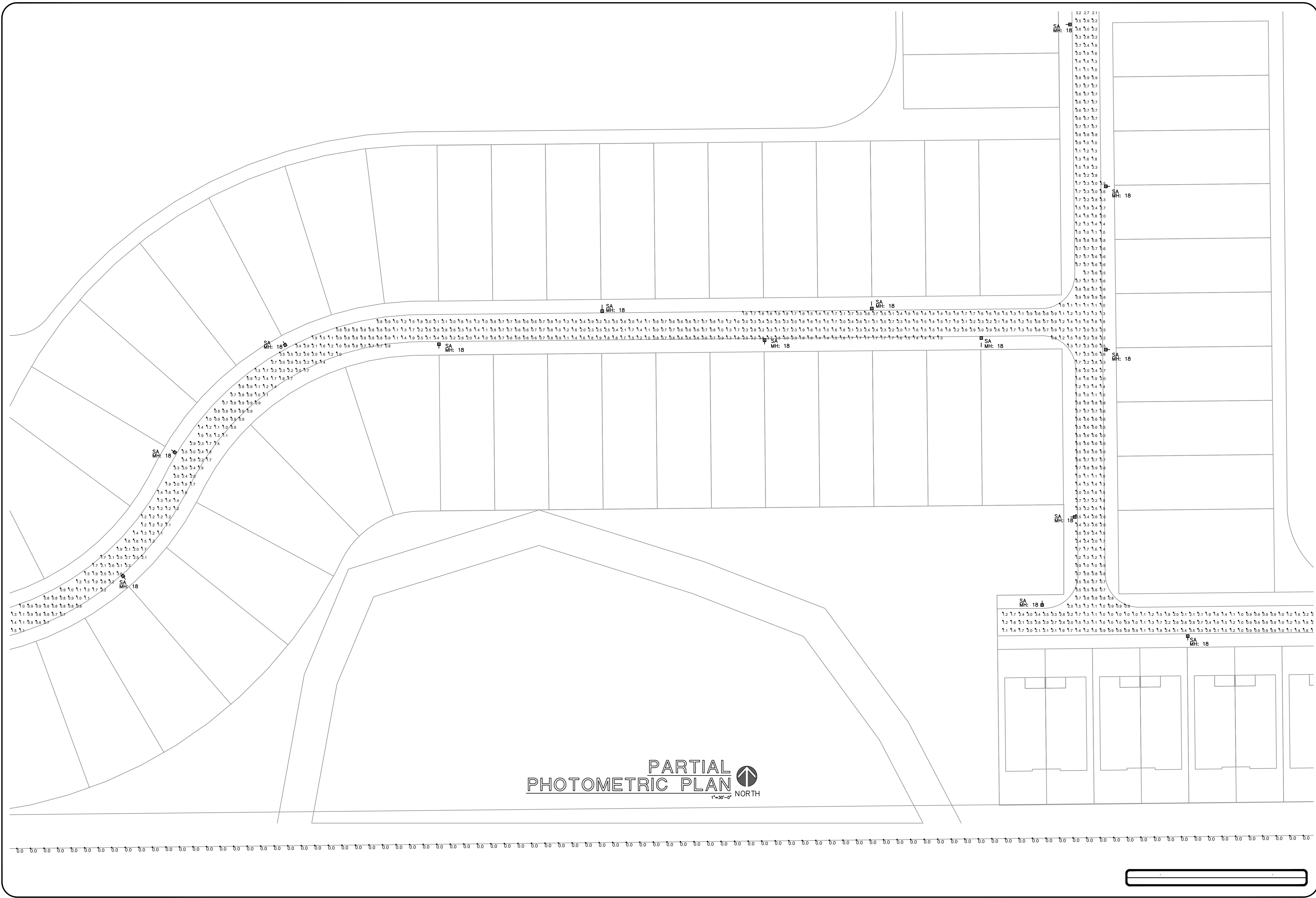
project title: **GORDY ROAD
 RESIDENTIAL DEVELOPMENT
 FORT PIERCE, FL**
 sheet title: **KEY PLAN**

proj. no.: 2025-0016
 project manager: JM

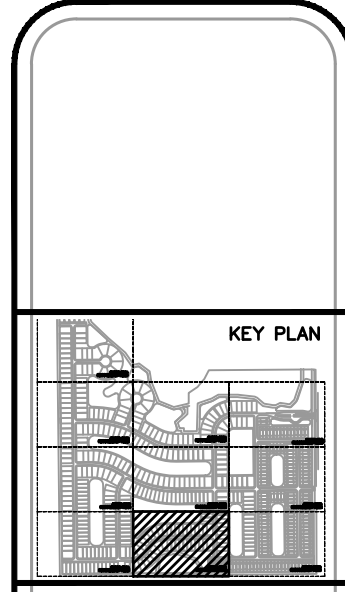
scale: AS NOTED
 date: 12-06-25

sheet
E0.1





revision	date



PRECISION TECHNICAL
 1800 W. 27th St., Ft. Pierce, FL 34979
 JohnMortell, LLC @ gmail.com
 772-528-0416



project title:
**GORDY ROAD
 RESIDENTIAL DEVELOPMENT
 FORT PIERCE, FL**

sheet title:
**PHOTOMETRIC PLAN
 PARTIAL**

proj. no.: 2025-0016
 project manager: JM

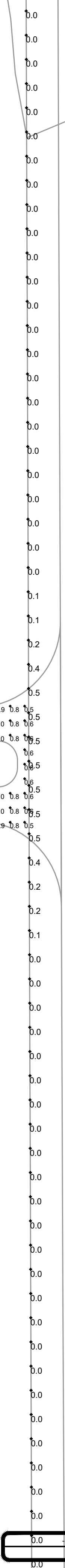
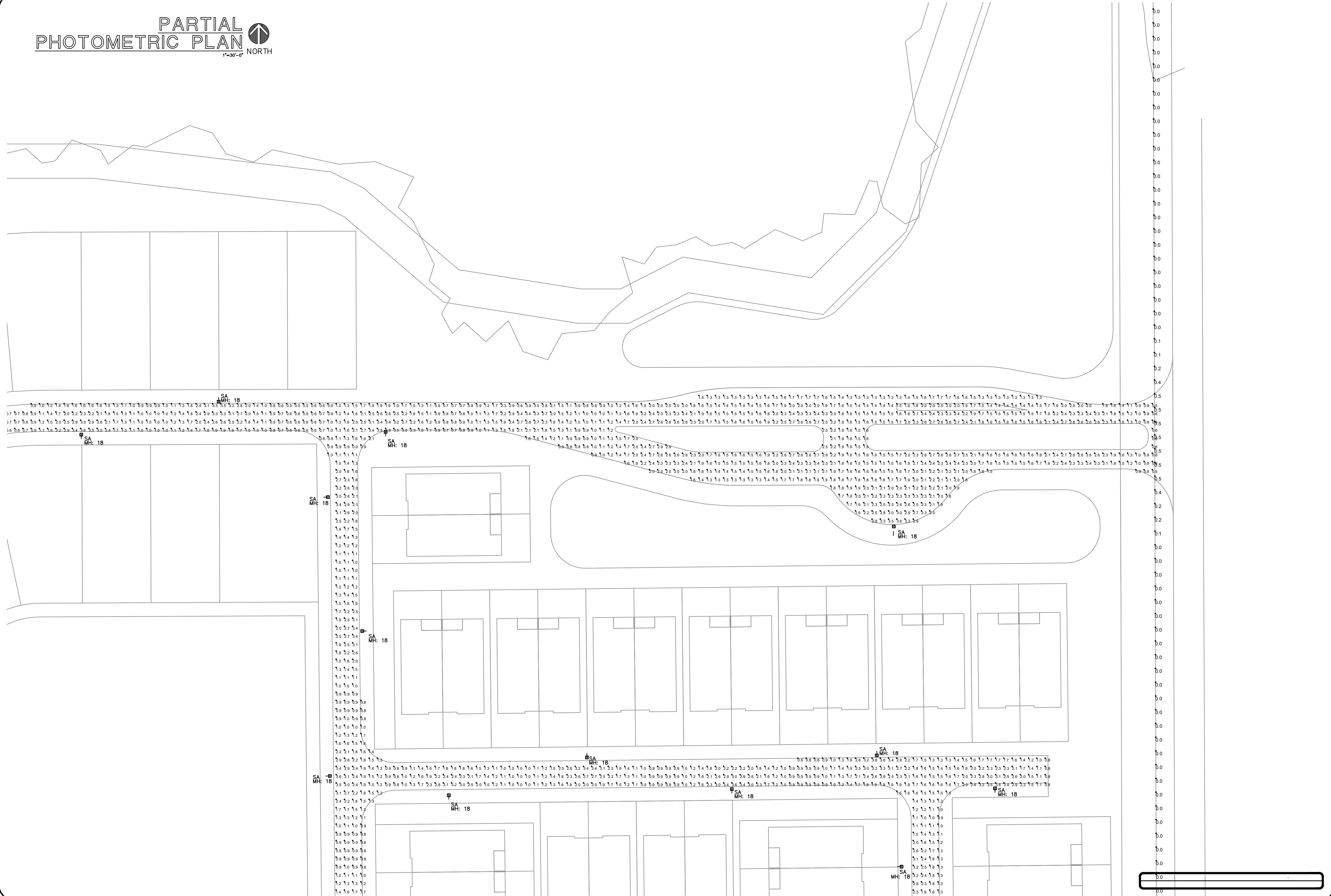
scale: AS NOTED
 date: 12-06-25

sheet
E1.1B

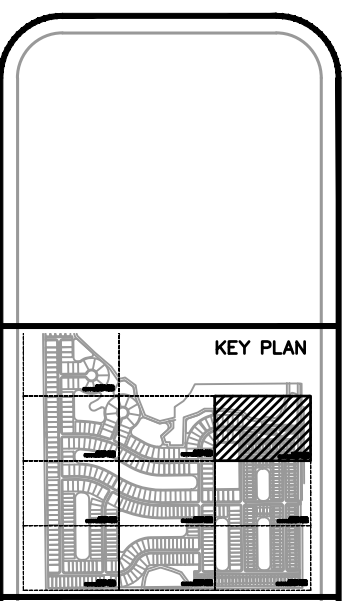
PARTIAL
PHOTOMETRIC PLAN



1"=30'-0"



revision	date



PRECISION TECHNICAL
1000 W. STATE ST. SUITE 200
FORT PIERCE, FL 34979
John.Martell@ptllc.com
772-528-0416



project title:
**GORDY ROAD
RESIDENTIAL DEVELOPMENT
FORT PIERCE, FL**

sheet title:
**PHOTOMETRIC PLAN
PARTIAL**

proj. no.: 2025-0016
project manager: JM

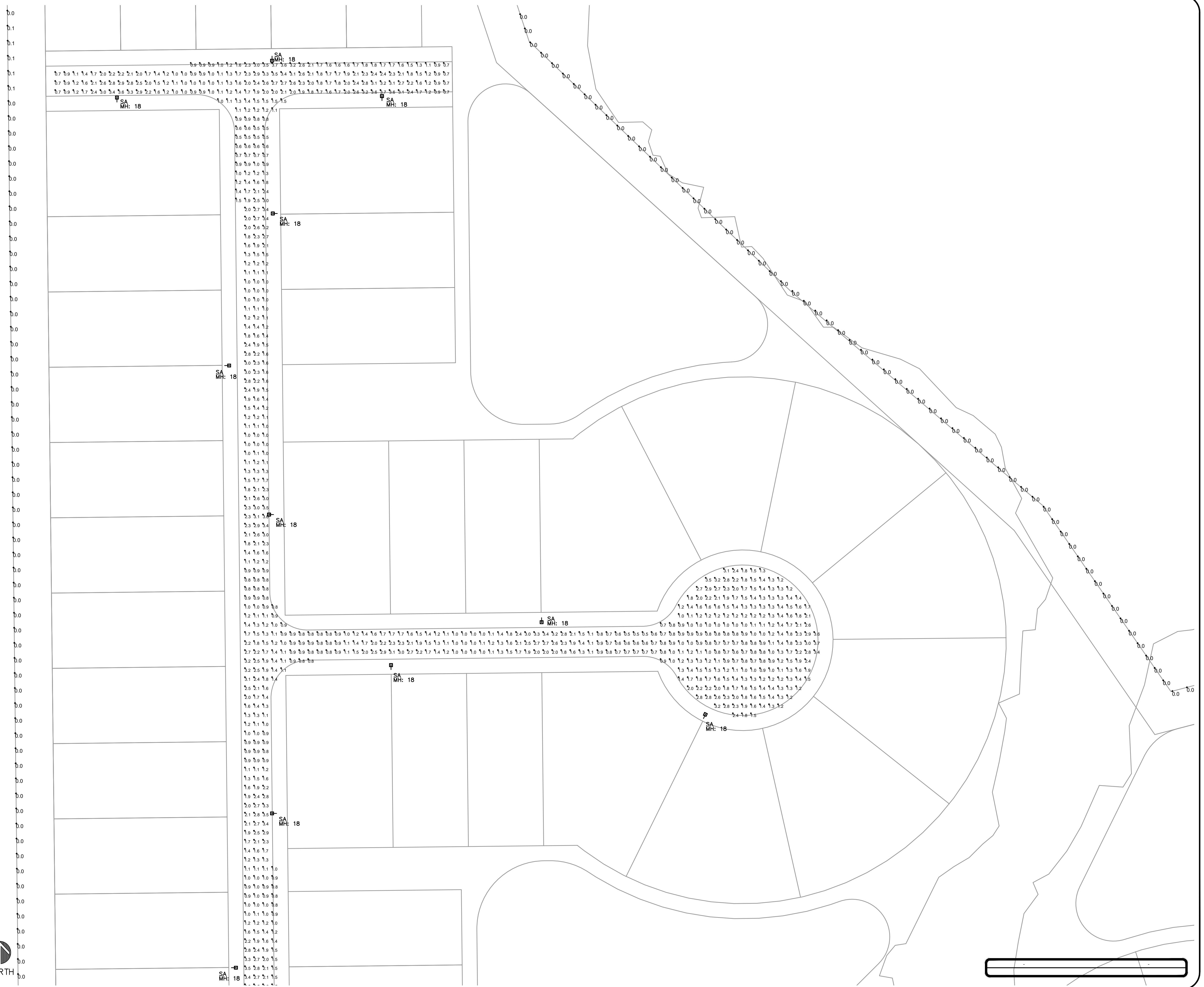
scale: AS NOTED
date: 12-06-25

sheet
E1.11

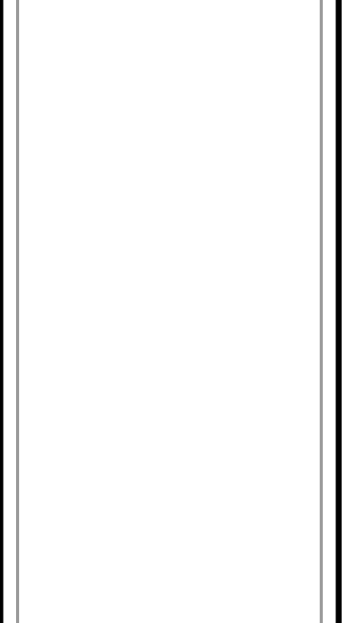
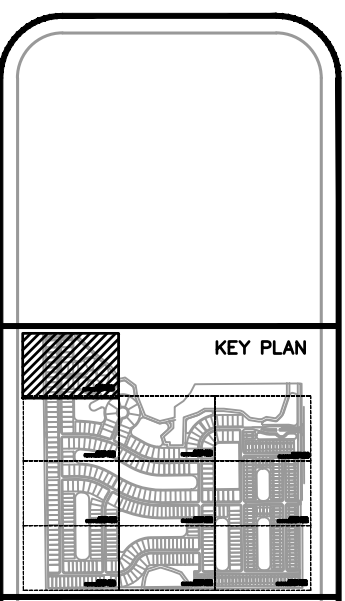
PARTIAL
PHOTOMETRIC PLAN



1"=30'-0"



revision	date



project title:
**GORDY ROAD
RESIDENTIAL DEVELOPMENT
FORT PIERCE, FL**

sheet title:
**PHOTOMETRIC PLAN
PARTIAL**

proj. no.: 2025-0016
project manager: JM

scale: AS NOTED
date: 12-06-25

sheet
E1.1J

Site and Area

EcoForm

ECF-S small area light

Gardco EcoForm Gen-2 combines economy with performance in an LED area luminaire. Capable of delivering up to 27,800 lumens or more in a compact, low profile LED luminaire, EcoForm offers a new level of customer value. EcoForm features an innovative retrofit arm kit, simplifying site conversions to LED by eliminating the need to drill additional holes in most existing poles. Integral control systems available for further energy savings. Includes Service Tag, our innovative way to provide assistance throughout the life of the product.

Project: _____

Location: _____

Cat.No: _____

Type: _____

Lamps: _____ Qty: _____

Notes: _____

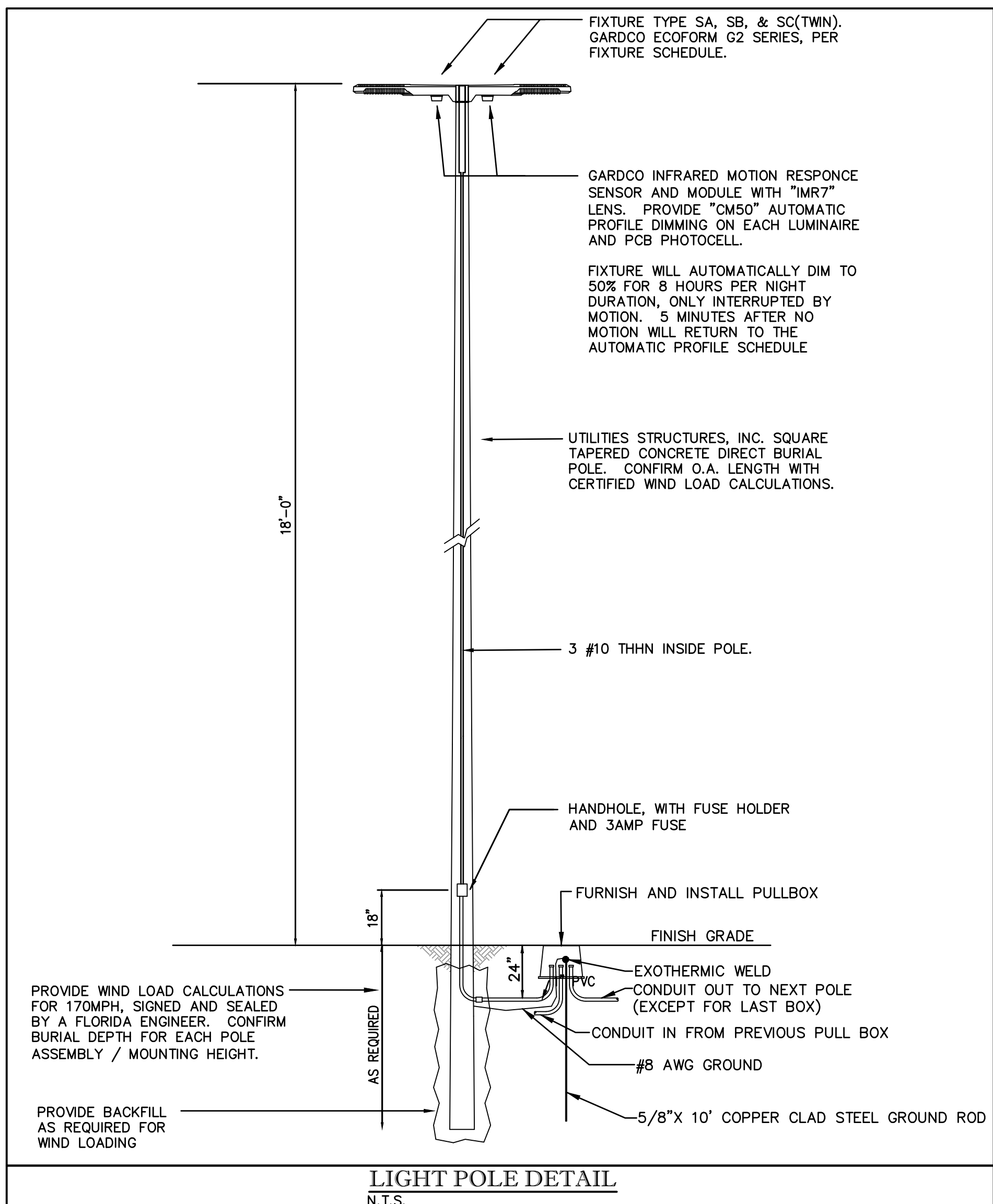
Ordering guide Example: ECF-S-64L-900-NW-G2-AR-5-120-HIS-MGY

Prefix	Number of LEDs	Drive Current	LED Color - Generation	Mounting	Distribution	Voltage	
ECF-S							
ECF-S EcoForm site and area small	32L 32 LEDs (2 modules)	365mA 530mA 700mA 1A 1050mA 1.5A 1200mA	WW-G2 Warm White 3000K, 70CRI Generation 2 NW-G2 Neutral White 4000K, 70CRI Generation 2 CW-G2 Cool White 5000K, 70CRI Generation 2	AR Arm Mount (Standard) The following mounting kits must be ordered separately (See accessories) SP Slip Fitter Mount (fits to 1 1/4" O.D. tennon) WS Wall mount with surface contact rear entry permitted RAM Retrofit arm mount kit	Type 2 Type 2 2-90 Rotated left 90° 2-270 Rotated right 270° Type 3 Type 3 3-90 Rotated left 90° 3-270 Rotated right 270° Type 4 Type 4 4-90 Rotated left 90° 4-270 Rotated right 270° Type 5 Type 5 5-90 Type 5W	AFR Auto Front Row, Rotated left 90° AFR-90 Auto Front Row, Rotated right 90° AFR-270 Auto Front Row, Rotated right 270° BLC Back Light Control BLC-90 Back Light Control rotated at 90° BLC-270 Back Light Control rotated at 270° LCL LED Corner Optic Left RCL LED Corner Optic Right	120 120V 208 208V 240 240V 277 277V 347 347V 480 480V 120-277V (50/60Hz) 347-480V (50/60Hz)

Dimming controls	Motion sensing lens	Photo-sensing	Options	Luminaire	Finish
DD 0-10V External dimming (for controls by others) DCD Dual Circuit Control FAWS Field Adjustable Wattage Selector SRDR SR driver connected to Zhaga socket Dynadimmer: Automatic Profile Dimming CS50 Safety 50% Dimming, 7 hours CM50 Median 50% Dimming, 8 hours CS50+ Safety 50% Dimming, 7 hours CM50+ Median 50% Dimming, 8 hours BL Bi-level functionality WIAP Wireless Interact (includes SR driver and SR receptacle - do NOT select SRDR)	IMR3 Integral with #3 lens IMR7 Integral with #7 lens LB Low (7-10" mounting height) sensor, Back color housing LW Low (7-10" mounting height) sensor, White color housing HB High (15-47" mounting height) sensor, Back color housing HW High (15-47" mounting height) sensor, White color housing	PCB Photocontrol Button TLRD5 Twist Lock Receptacle 5 Pin TLRD7 Twist Lock Receptacle 7 Pin TLRPC Twist Lock Receptacle w/PhotoCell	Fusing F1 Single (DOB, 277, 347VAC) F2 Double (DOB, 240, 480VAC) Pole Mount Fusing FP1 Single (DOB, 277, 347VAC) FP2 Double (DOB, 240, 480VAC) FP3 Canadian Double Pull (DOB, 240, 480VAC) Surge Protection (DOA, STANDS) SP2 Increased 20KA BAC Meets the requirements of the Boy America Act of 1933 (BAA)	Square Pole Adapter included in standard product TR Terminal Block RPA Round Pole Adapter (fits to 3" - 3.9" O.D. poles) HIS Internal House Side Shield	Textured BK Black WH White BZ Bronze GG Dark Gray MGY Medium Gray Customer specified RAL Specify optional color or RAL (see RAL7024) CC Custom color (Must supply color chip for required factory quote)

1. BL-IMR3/7 equipped with out-board sensor housing when voltage is HVU (247-480V)
2. Mount to a 4" round pole with adapter included for square pole.
3. Limited to a maximum of 45 degrees aiming above horizontal.
4. Not available with other dimming control options.
5. Not available with motion sensor.
6. Not available with photocontrol.
7. Must specify a motion sensor lens.
8. Not available to 3P or 480V.
9. Must specify input voltage.
10. TLRPC, TLRD5 and TLRPC receptacle plus 4 & 5 are capped off when ordered with any of the dimming controls DD or FAWS or LCC.
11. Not available in 480V. Order photoCell separately with TLRPC/7.
12. Not available with DOA.
13. Not available with SP and WS. RPA provided with black finish standard.
14. HIS not available with Type 9, SW, BLC, BLC-90, BLC-270, LCL or RCL optics.
15. Not available with DO, DDC, FAWB, SRDR, or WAP dimming control options.
16. WAP must be combined with Motion sensing lens LB or LW or HB or HW.
17. When ordering SRDR, controller Qty others to be used on socket must be SR compatible (See specifications for more details). Consult factory for lead time. All pins in NEMA receptacle are connected to SR driver. SRDR not available with TLRD5 or TLRPC.
18. 0-10V dimming driver standard.
19. LCL and RCL not available with 48L-13A or 64L-1A.
20. Extended lead times apply. Contact factory for details.
21. Failure to properly select the "BAC" suffix could result in you receiving product that is not BAA compliant product with no recourse for an RMA or refund. This BAC designation hereunder does not address the applicability of, or availability of, a waiver under the Trade Agreements Act, or (1) the "Buy America" domestic content requirements imposed on states, localities, and other non-federal entities as a condition of receiving funds administered by the Department of Transportation or other federal agencies.

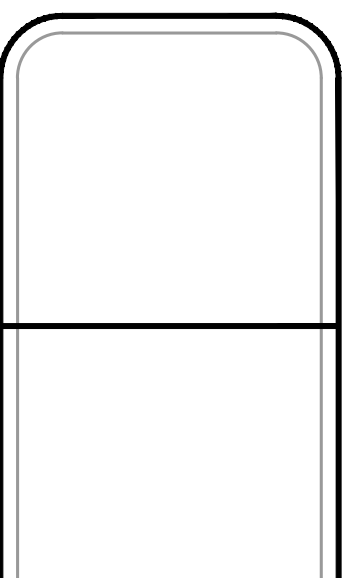
ECF-S_EcoForm_area_small 04/24 page 1 of 9



Symbol	Qty	Label	MANUFACT	Description	Air Lum. Lumens	LLF	Lum. Watts	Total Watts
	142	SA	GARDCO	ECF-S-32L-700-NW-G2-3-HIS POLE MOUNT 18' AFG	7576	0.900	72.9	10351.8
	11	SB	GARDCO	ECF-S-32L-700-NW-G2-4-HIS POLE MOUNT 18' AFG	7802	0.900	72.9	811.9
	4	SC	GARDCO	(2) ECF-S-32L-700-NW-G2-5W POLE MOUNT 18' AFG	18978	0.900	72.9	563.2

Label	CalcType	Units	Avg	Max	Min	AvgMin	MaxMin
PROPERTY LINE	Illuminance	Fc	0.01	0.5	0.0	N.A.	N.A.
ROADWAY AREAS	Illuminance	Fc	1.62	4.3	0.0	3.24	8.60

revision	date



PRECISION TECHNICAL
1000 W. STATE ST. #202
FORT PIERCE, FL 34979
JohnMortell, LLC@gmail.com
772-528-0416



project title:
**GORDY ROAD
RESIDENTIAL DEVELOPMENT
FORT PIERCE, FL**
sheet title:
SCHEDULES

proj. no.: 2025-0016
project manager: JM
scale: AS NOTED
date: 12-06-25

E1.0