



DAVID TAYLOR P.S.M. 2243

NVR, Inc.

PREPARED FOR

BY	REVISION	DATE

Masteller, Moler & Taylor, Inc.
 Professional Surveyors and Mappers
 Land Surveying Business LB 4644
 1525 27th Street, Suite 2, Park Ridge, Illinois 60068
 Phone (773) 864-8509 Fax (773) 784-0442
 email mast@mattm.com



DATE 4/8/2025

SCALE 1"=50'

SHEET 7 OF 15

FILE NO.

DRAWN BY

DATE

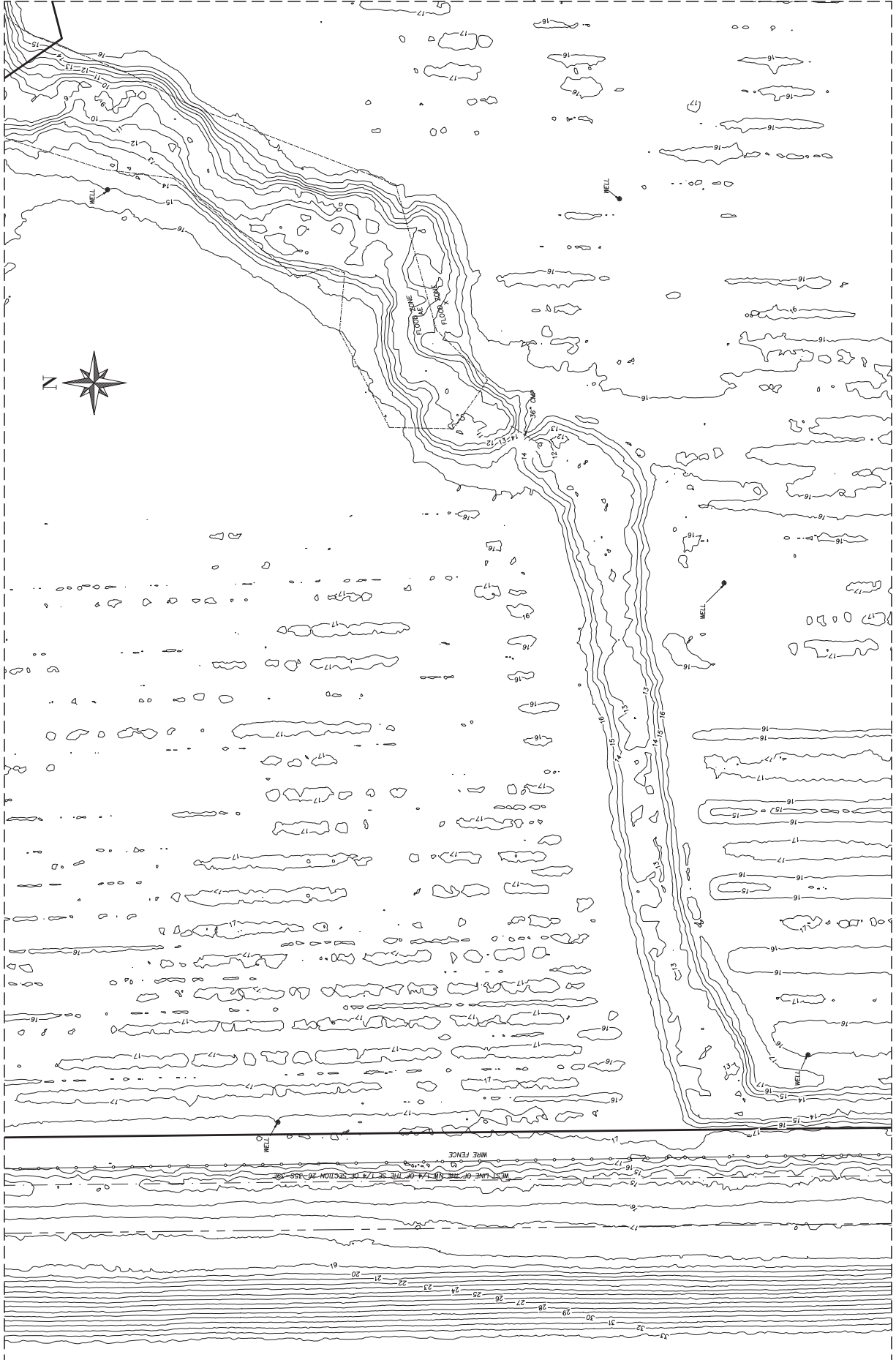
APPROVED BY

DWT

DRAWING NAME

520267

MATCHLINE (SEE SHEET 3)

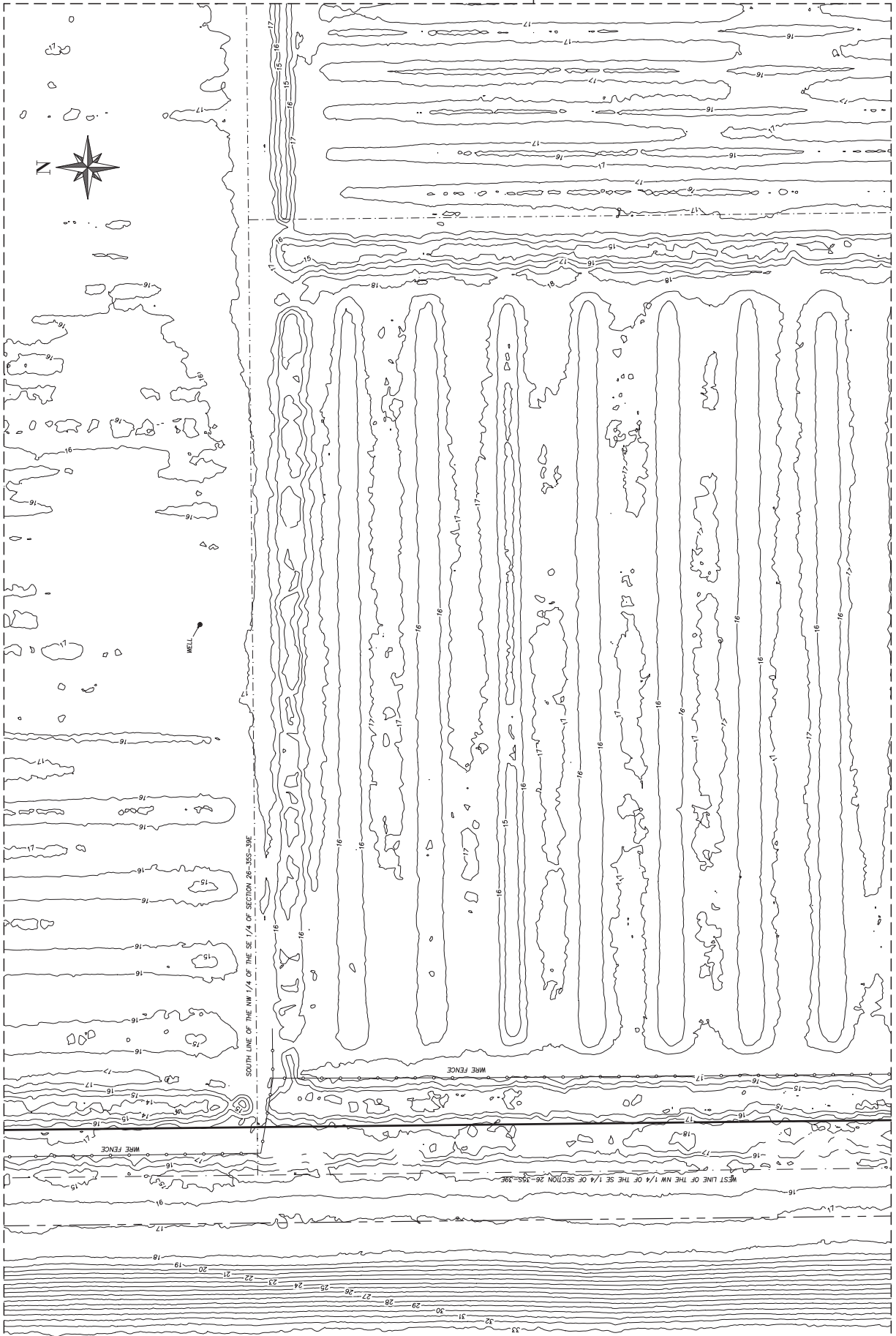


MATCHLINE (SEE SHEET 8)

MATCHLINE (SEE SHEET 9)

MATCHLINE (SEE SHEET 5)

MATCHLINE (SEE SHEET 4)



MATCHLINE (SEE SHEET 6)



DAVID TAYLOR P.S.M. 2543

David Taylor

NVR, Inc.

PREPARED FOR

BY	REVISION	DATE

Masteller, Moier & Taylor, Inc.
 Professional Surveyors and Mappers
 Land Surveying Business LB 4644
 1825 27th Street, Suite 2, New Braunfels, Texas 78130
 Phone (777) 844-8200 Fax (777) 794-0442
 email mast@mtmty.com



DATE: 4/8/2025
 SCALE: 1"=50'
 SHEET: 5 OF 15
 FILE NO.:
 BRSD:
 DRAWN BY:
 APPROVED BY:
 DRAWING NAME:
 5202025



DAVID TAYLOR P.S.M. 2543

David Taylor

NVR, Inc.

PREPARED FOR

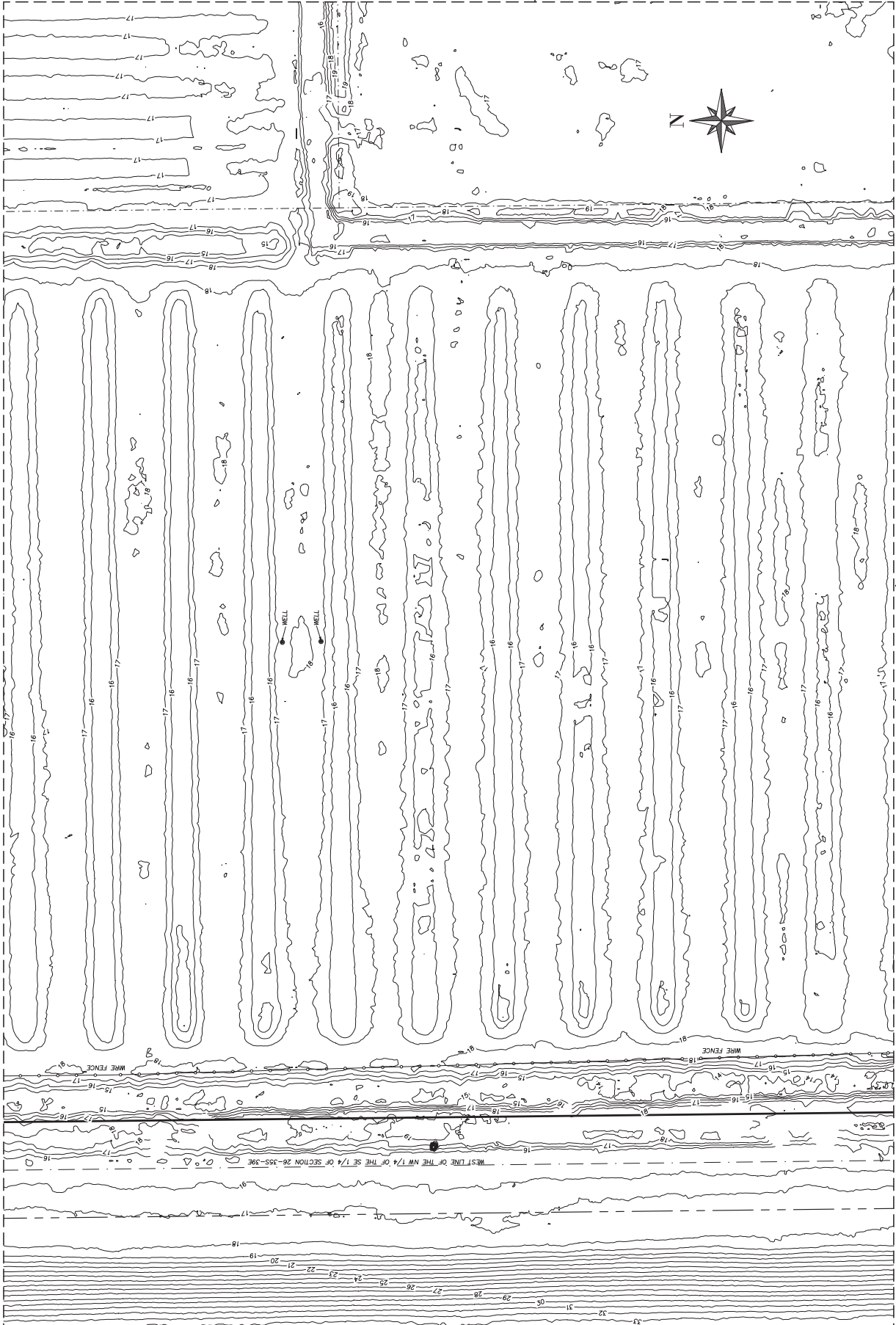
BY	REVISION	DATE

Masteller, Moler & Taylor, Inc.
 Professional Surveyors and Mappers
 Land Surveying Business LB 4644
 1525 27th Street, Suite 2, New Braunfels, Texas 78130
 Phone (777) 844-8200 Fax (777) 784-0442
 email masteller@mtm.com



DATE: 4/8/2025
 SCALE: 1"=50'
 SHEET NO. 507
 SHEET 6 OF 15
 FILE NO.
 BRSD
 DRAWN BY
 APPROVED BY
 DMT
 DRAWING NAME
 52025.007

MATCHLINE (SEE SHEET 5)



MATCHLINE (SEE SHEET 11)

MATCHLINE (SEE SHEET 10)

MATCHLINE (SEE SHEET 7)



DAVID TAYLOR P.S.M. 5243

David Taylor

NVR, Inc.

PREPARED FOR

BY	REVISION	DATE

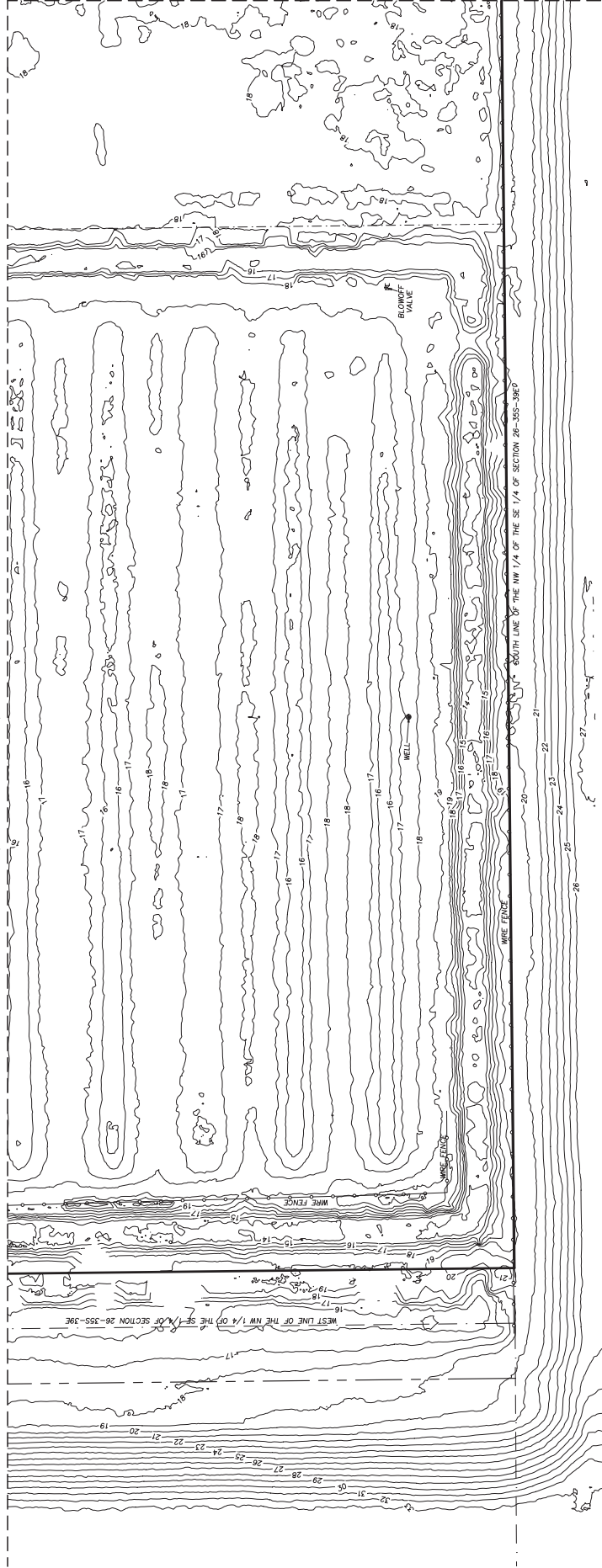
Masteller, Moier & Taylor, Inc.
 Professional Surveyors and Mappers
 Land Surveying Business LB 4644
 1825 27th Street, Suite 2, Warrenton, Oregon 97146
 Phone (503) 864-8200 Fax (503) 864-8202
 www.mastellermotaylor.com



DATE: 4/8/2025
 SCALE: 1"=50'
 SHEET: 2 OF 15
 FILE NO.:
 DRAWN BY: M
 APPROVED BY: DMT
 DRAWING NAME:
 SECTION:

MATCHLINE (SEE SHEET 11)

MATCHLINE (SEE SHEET 6)





DAVID TAYLOR P.S.M. 2543

David Taylor

NVR, Inc.

PREPARED FOR

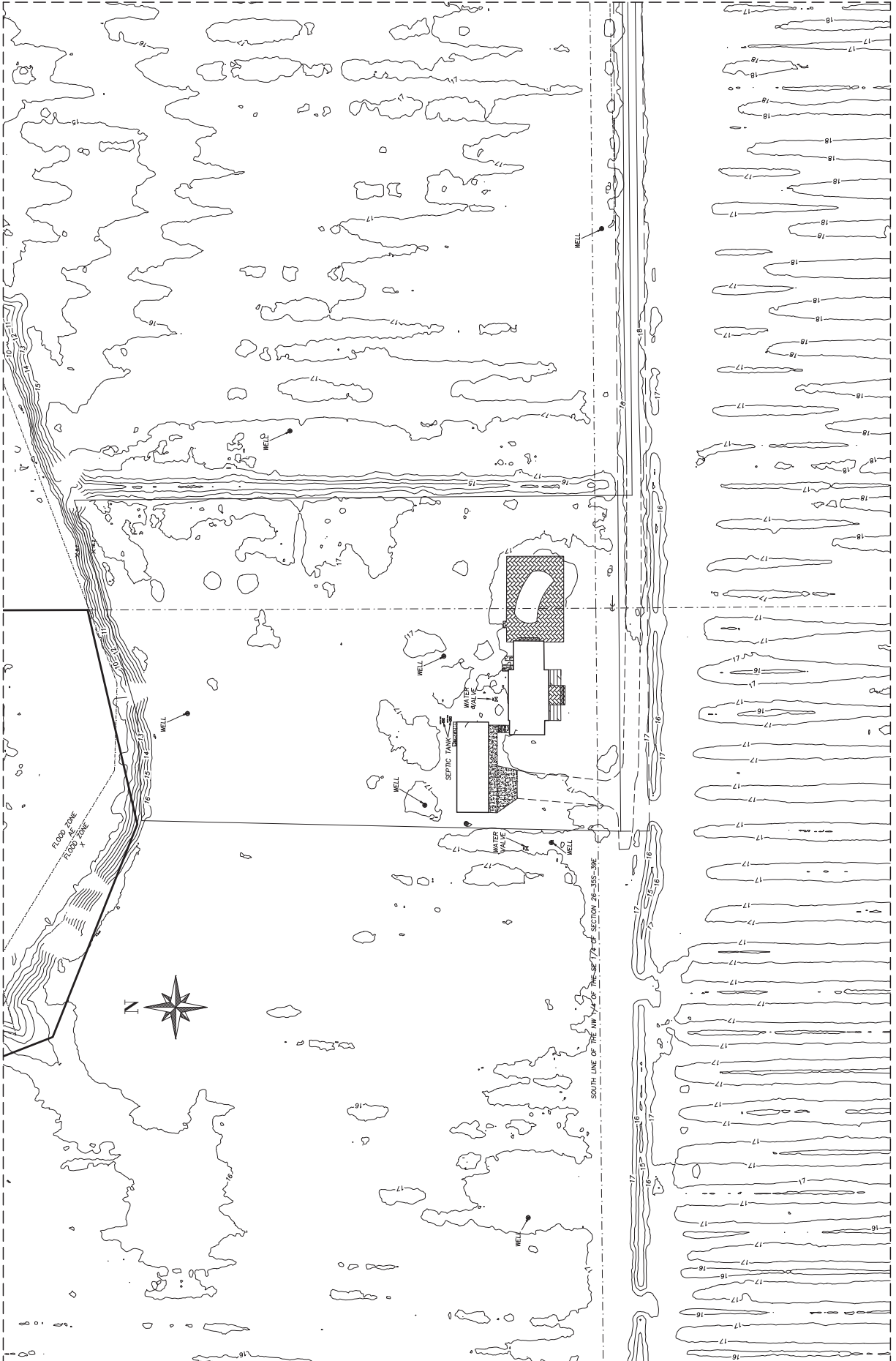
BY	DATE	REVISION

Masteller, Moler & Taylor, Inc.
Professional Surveyors and Mappers
Land Surveying Business LB 4644
1625 27th St., Suite 2, New Braunfels, TX 78130
Phone (777) 844-6009 Fax (777) 794-0442
central@mastellertaylor.com



DATE: 4/8/2025
SCALE: 1" = 20.0'
SHEET # 2 OF 15
FILE NO.:
PROJECT:
DRAWN BY:
CHECKED BY:
APPROVED BY:
DWT
DRAWING NAME:
52025-007

MATCHLINE (SEE SHEET 8)



MATCHLINE (SEE SHEET 13)

MATCHLINE (SEE SHEET 4)

MATCHLINE (SEE SHEET 5)

MATCHLINE (SEE SHEET 10)



DAVID TAYLOR P.S.M. 2543

[Signature]

NVR, Inc.

PREPARED FOR

BY	REVISION	DATE

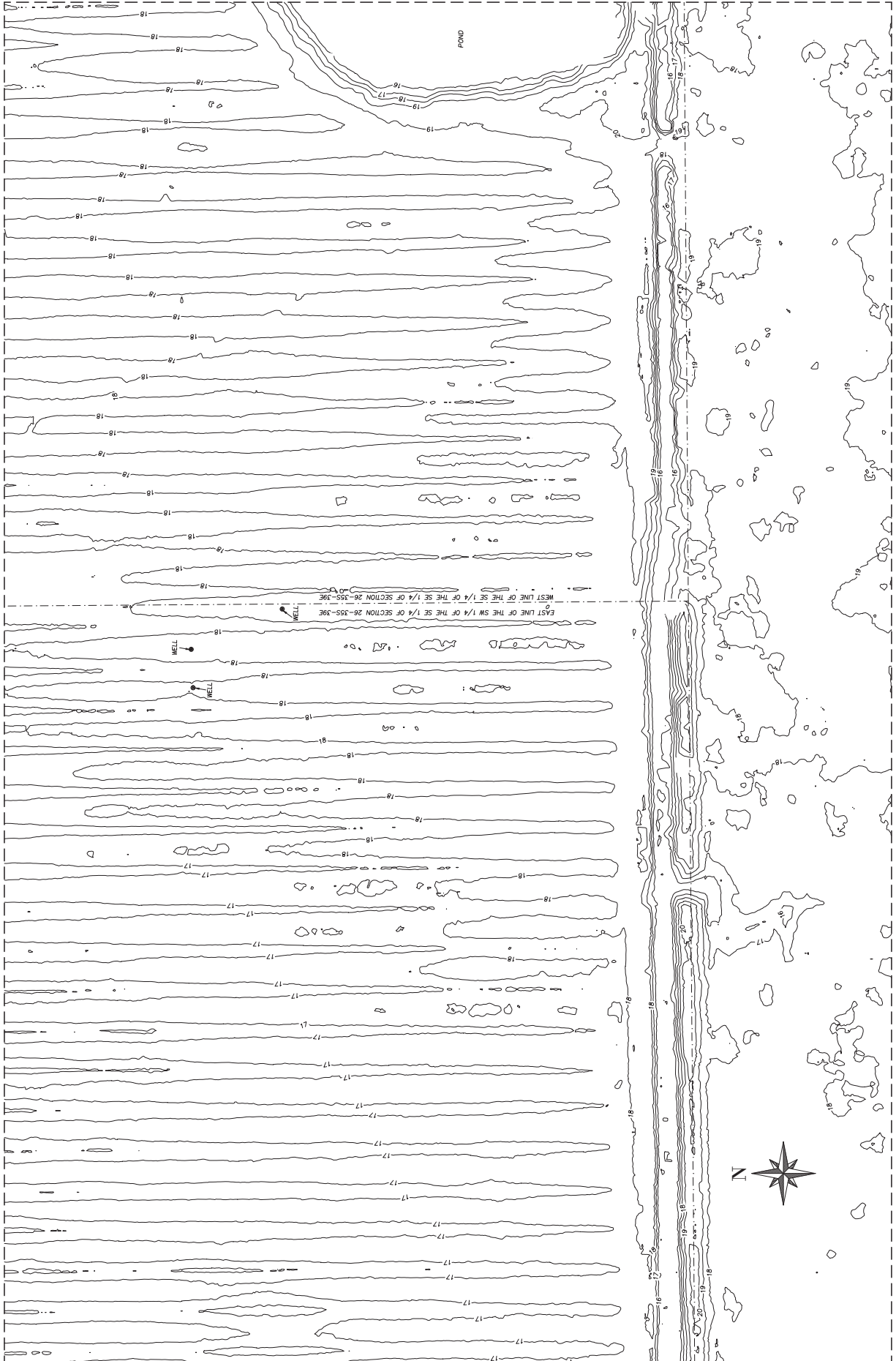
Masteller, Moler & Taylor, Inc.
 Professional Surveyors and Mappers
 Land Surveying Business LB 4644
 1825 27th Street, Suite 2, New Haven, Florida 32909
 Phone (772) 864-8200 Fax (772) 784-0442
 email mastellermapping.com



DATE: 4/8/2025
 SCALE:
 SHEET NO. 507
 SHEET NO. OF 15
 FILE NO.
 DRAWN BY:
 CHECKED BY:
 APPROVED BY:
 DWT
 DRAWING NAME:
 52025-007

MATCHLINE (SEE SHEET 14)

MATCHLINE (SEE SHEET 9)



MATCHLINE (SEE SHEET 11)

MATCHLINE (SEE SHEET 5)

MATCHLINE (SEE SHEET 6)



DAVID TAYLOR P.S.M. 2543

David Taylor

NVR, Inc.

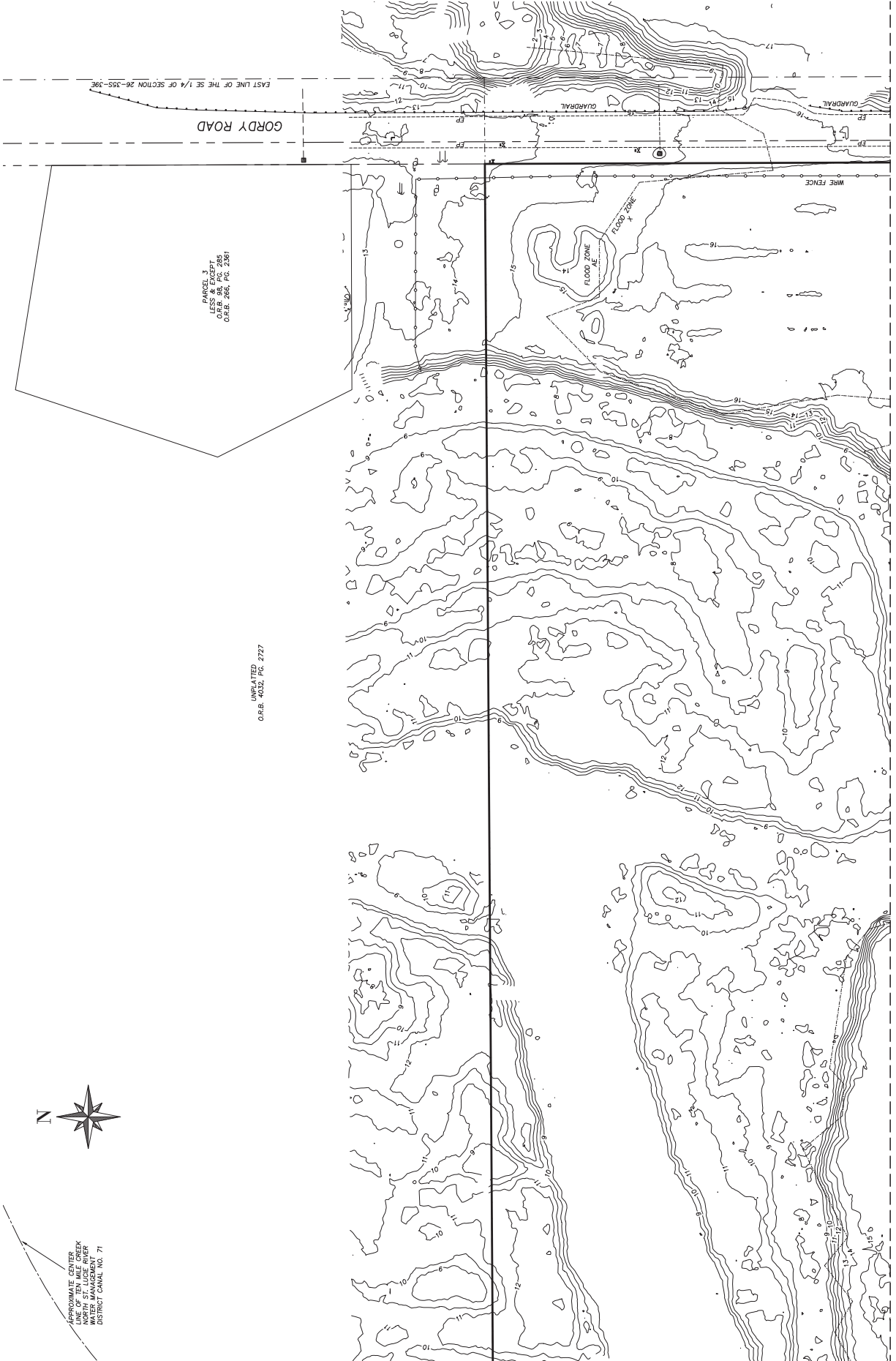
PREPARED FOR

BY	DATE	REVISION

Masteller, Moler & Taylor, Inc.
 Professional Surveyors and Mappers
 Land Surveying Business LB 4644
 1825 27th Street, Suite 2, Roseburg, Oregon, 97470
 Phone (773) 844-4505 Fax (773) 784-0442
 email mastellermapping.com



DATE: 4/8/2025
 SCALE: 1"=50'
 SHEET: 13 OF 15
 FILE NO.:
 REVISION:
 DRAWN BY:
 APPROVED BY:
 DWT
 DRAWING NAME:
 82025027



EAST LINE OF THE SE 1/4 OF SECTION 26-35S-39E

PARCEL 33
 LESS RECEIPT
 O.R.B. 88, PG. 285
 O.R.E. 266, PG. 2361

UNPLATTED
 O.R.B. 4032, PG. 2727

APPROXIMATE CENTER
 LINE OF TEN MILE CREEK
 WATER MANAGEMENT
 DISTRICT CANAL NO. 71

MATCHLINE (SEE SHEET 13)

MATCHLINE (SEE SHEET 8)

MATCHLINE (SEE SHEET 12)



MATCHLINE (SEE SHEET 9)

DAVID TAYLOR P.S.M. 5243
 NVR, Inc.
 PREPARED FOR

BY	DATE	REVISION

Professional Surveyors and Mappers
 Masteller, Moler & Taylor, Inc.
 1525 27th Street, Suite 2, New Milford, Ohio 43068
 Phone (772) 524-6509 Fax (772) 784-0442
 www.mastellermoler.com

DATE: 4/8/2025
 SCALE: 1"=50'
 SHEET: 7 OF 15
 FILE NO.:
 DRAWN BY: M
 APPROVED BY: DM
 DRAWING NAME: 26-35S-39E



MATCHLINE (SEE SHEET 15)



MATCHLINE (SEE SHEET 10)



DAVID TAYLOR P.E. 2543
Professional Engineer
State of North Carolina
No. 2543
Exp. 12/31/2025

NVR, Inc.

PREPARED FOR

BY	REVISION	DATE

Masteller, Moler & Taylor, Inc.
Professional Surveyors and Mappers
Land Surveying Business LB 4644
1625 27th Street, Suite 2, New Hope, North Carolina 27588
Phone (772) 584-8200 Fax (772) 784-0442
www.mastellermoler.com



DATE: 4/8/2025
SCALE: 1" = 40'
SHEET NO. 207
FILE NO. 15 OF 15
FILE NO.
DRAWN BY
CHECKED BY
APPROVED BY
DATE
DRAWING NAME
SECTION