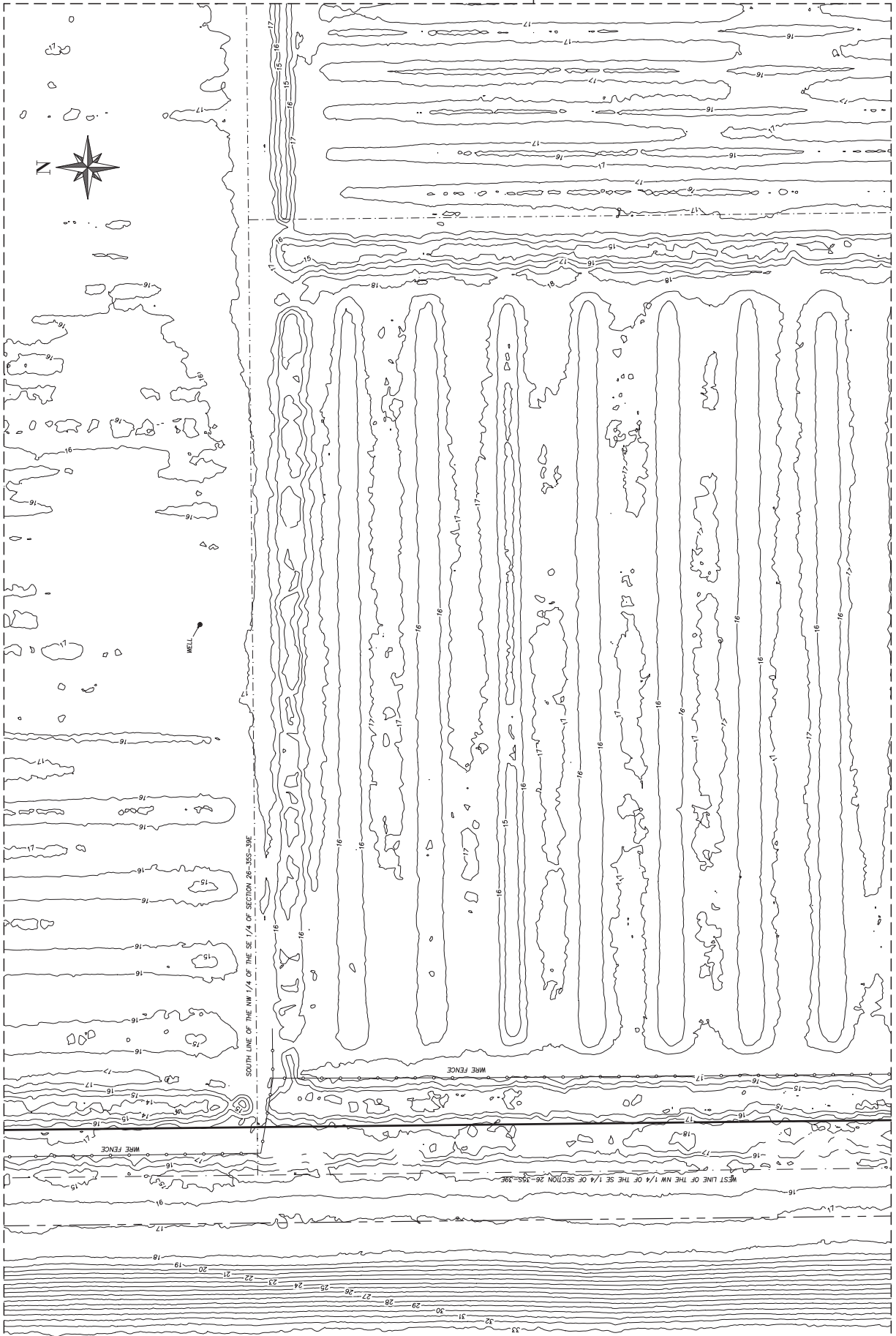


MATCHLINE (SEE SHEET 4)



MATCHLINE (SEE SHEET 6)



DAVID TAYLOR P.S.M. 2543

David Taylor

NVR, Inc.

PREPARED FOR

BY	REVISION	DATE

Masteller, Moier & Taylor, Inc.
 Professional Surveyors and Mappers
 Land Surveying Business LB 4644
 1825 27th Street, Suite 2, New Rural, Florida, 32608
 Phone (772) 844-8200 Fax (772) 784-0442
 www.mastellermoitertaylor.com



DATE: 4/8/2025
 SCALE: 1"=50'
 SHEET: 5 OF 15
 FILE NO.:
 BRSD:
 DRAWN BY:
 APPROVED BY:
 DWT
 DRAWING NAME:
 5202025



DAVID TAYLOR P.S.M. 2543

[Signature]

NVR, Inc.

PREPARED FOR

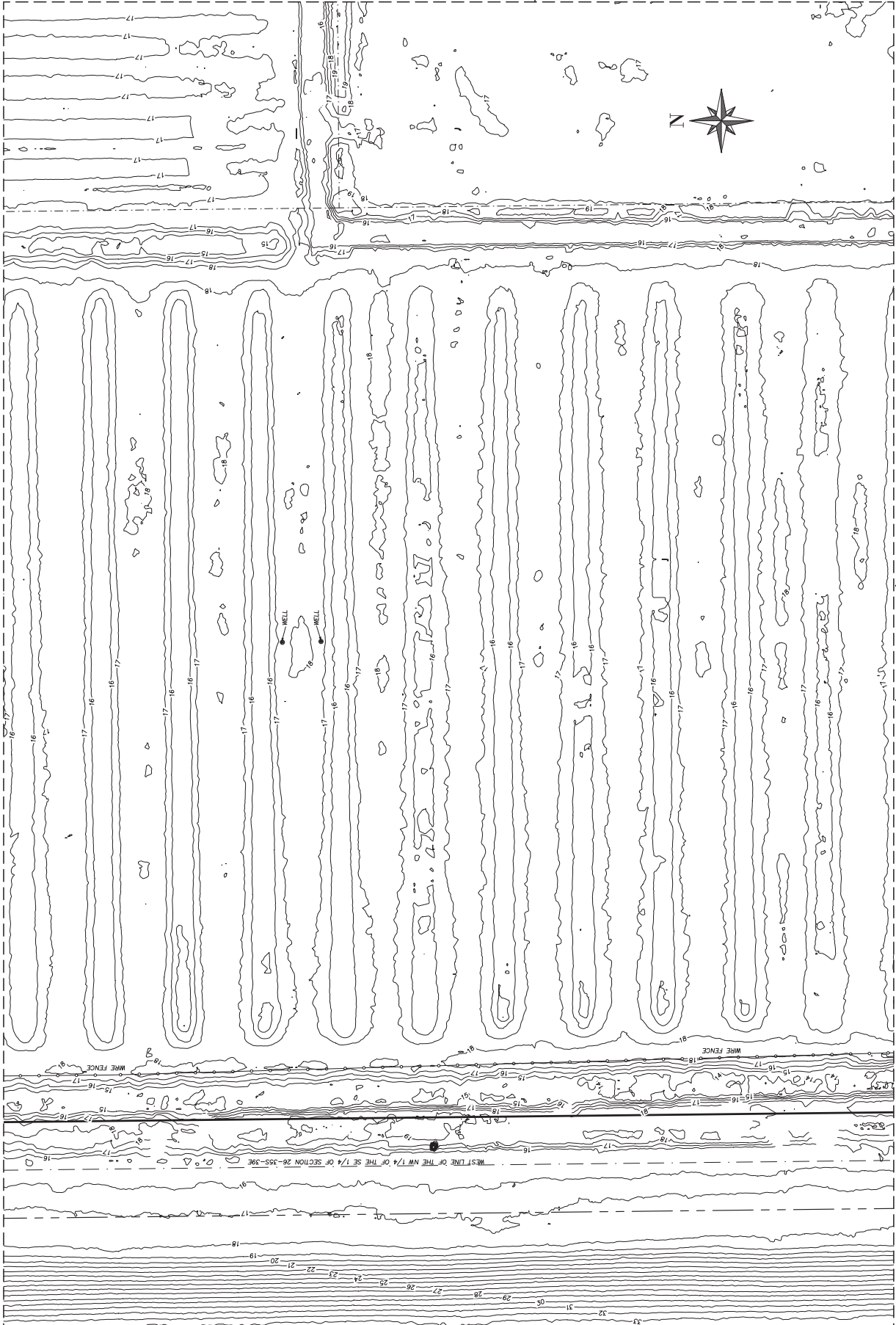
BY	REVISION	DATE

Masteller, Moler & Taylor, Inc.
 Professional Surveyors and Mappers
 Land Surveying Business LB 4644
 1525 27th Street, Suite 2, New Braunfels, Texas 78130
 Phone (777) 844-8200 Fax (777) 784-0442
 email: masteller@mtm.com



DATE: 4/8/2025
 SCALE: 1"=50'
 SHEET NO.: 507
 SHEET 6 OF 15
 FILE NO.:
 BRSD:
 DRAWN BY:
 APPROVED BY:
 DWT
 DRAWING NAME:
 5202.dwg

MATCHLINE (SEE SHEET 5)



MATCHLINE (SEE SHEET 10)

MATCHLINE (SEE SHEET 11)

MATCHLINE (SEE SHEET 7)



DAVID TAYLOR P.S.M. 2543

David Taylor

NVR, Inc.

PREPARED FOR

BY	DATE	REVISION

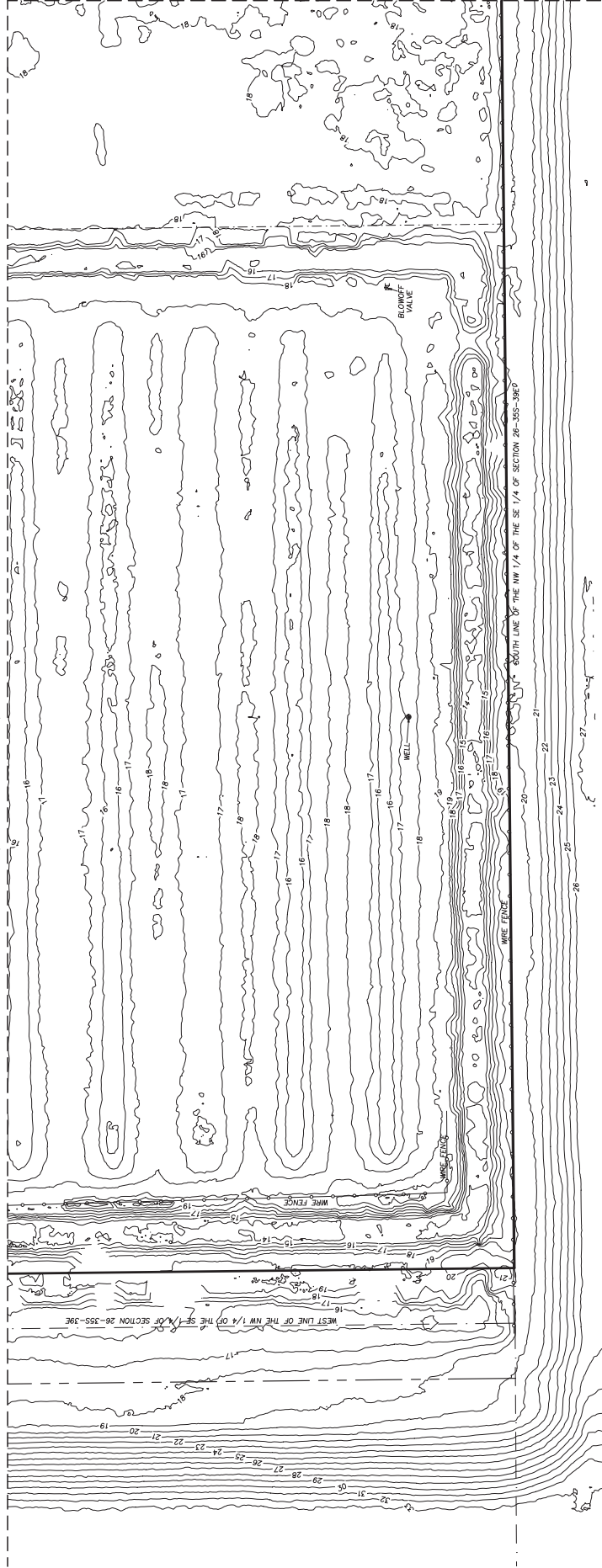
Masteller, Moier & Taylor, Inc.
 Professional Surveyors and Mappers
 Land Surveying Business LB 4644
 1825 27th Street, Suite 2, Warrenton, Oregon 97146
 Phone (503) 864-6200 Fax (503) 794-0442
 email mast@mty.com



DATE: 4/8/2025
 SCALE: 1"=50'
 SHEET: 2 OF 15
 FILE NO.:
 DRAWN BY: M
 APPROVED BY: DMT
 DRAWING NAME:
 SECTION:

MATCHLINE (SEE SHEET 11)

MATCHLINE (SEE SHEET 6)



WEST LINE OF THE NW 1/4 OF THE SE 1/4 OF SECTION 26-355-396

SOUTH LINE OF THE NW 1/4 OF THE SE 1/4 OF SECTION 26-355-396



DAVID TAYLOR P.S.M. 2543

David Taylor

NVR, Inc.

PREPARED FOR

BY	REVISION	DATE

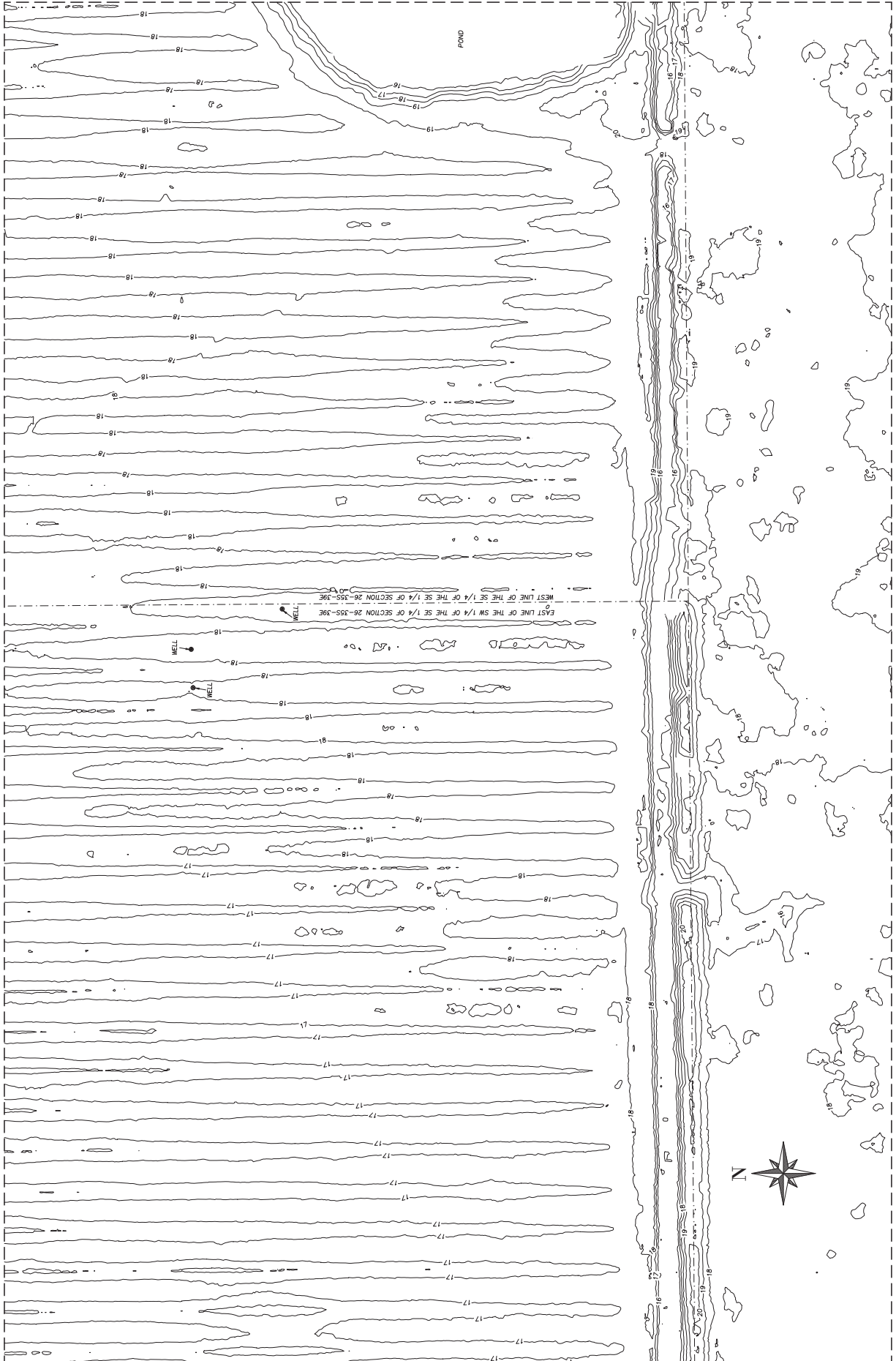
Masteller, Moler & Taylor, Inc.
 Professional Surveyors and Mappers
 Land Surveying Business LB 4644
 1825 27th Street, Suite 2, New Haven, Florida 32909
 Phone (772) 864-8200 Fax (772) 784-0442
 email mastellermapping.com



DATE: 4/8/2025
 SCALE:
 SHEET NO. 507
 SHEET NO. OF 15
 FILE NO.
 DRAWN BY:
 CHECKED BY:
 APPROVED BY:
 DWT
 DRAWING NAME:
 52025-007

MATCHLINE (SEE SHEET 14)

MATCHLINE (SEE SHEET 9)



MATCHLINE (SEE SHEET 11)

MATCHLINE (SEE SHEET 5)

MATCHLINE (SEE SHEET 6)



DAVID TAYLOR P.S.M. 2243

[Signature]

NVR, Inc.

PREPARED FOR

BY	REVISION	DATE

Masteller, Moler & Taylor, Inc.
 Professional Surveyors and Mappers
 Land Surveying Business LB 4644
 1525 27th Street, Suite 2, New Braunfels, Texas 78130
 Phone (777) 824-6209 Fax (777) 794-0442
 email mast@mtm.com



DATE: 4/8/2025

SCALE: 1" = 200'

SHEET NO. 507

FILE NO. 11 OF 15

BRSD

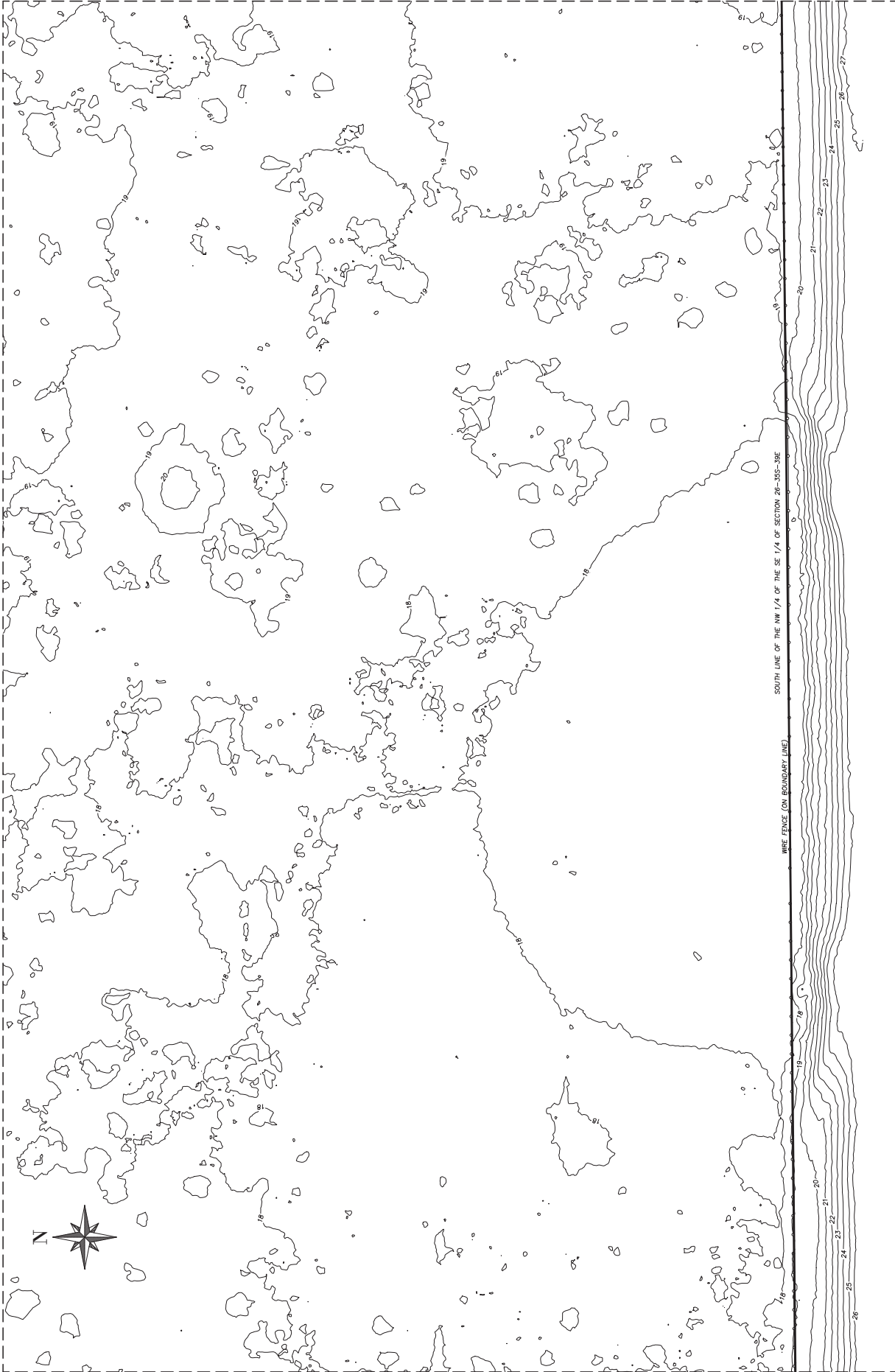
DRAWN BY: M

APPROVED BY: DMT

DRAWING NAME

SCALE

MATCHLINE (SEE SHEET 10)



MATCHLINE (SEE SHEET 6)

MATCHLINE (SEE SHEET 7)



DAVID TAYLOR P.S.M. 2543

David Taylor

NVR, Inc.

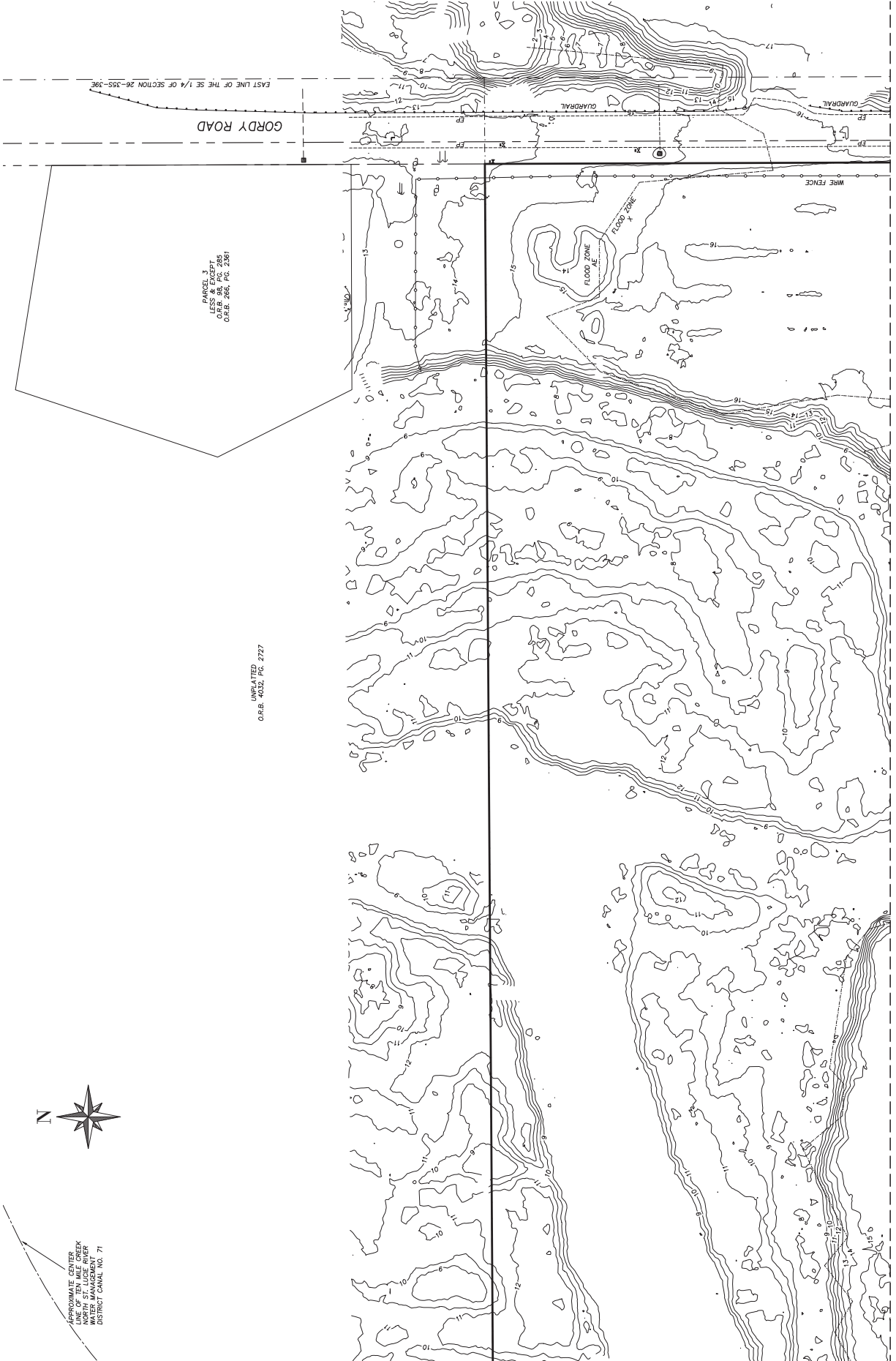
PREPARED FOR

BY	DATE	REVISION

Masteller, Moler & Taylor, Inc.
 Professional Surveyors and Mappers
 Land Surveying Business LB 4644
 1825 27th Street, Suite 2, Roseburg, Oregon, 97470
 Phone (757) 584-4505 Fax (757) 784-0442
 email mast@mastmoler.com



DATE: 4/8/2025
 SCALE: 1"=50'
 SHEET NO. 207
 SHEET 22 OF 15
 FILE NO.
 REVISION
 DRAWN BY
 CHECKED BY
 APPROVED BY
 DMT
 DRAWING NAME
 2502207



EAST LINE OF THE SE 1/4 OF SECTION 26-35S-39E

PARCEL 3
 LESS RECEIPT
 O.R.B. 386, PG. 285
 O.R.E. 266, PG. 2361

UNPLATTED
 0&B. 4032, PG. 2727

APPROXIMATE CENTER
 LINE OF TEN MILE CREEK
 WATER MANAGEMENT
 DISTRICT CANAL NO. 71

MATCHLINE (SEE SHEET 8)

MATCHLINE (SEE SHEET 13)

MATCHLINE (SEE SHEET 12)



MATCHLINE (SEE SHEET 9)

DAVID TAYLOR P.S.M. 5243
 NVR, Inc.
 PREPARED FOR

BY	REVISION	DATE

Professional Surveyors and Mappers
 Masteller, Moler & Taylor, Inc.
 1525 27th Street, Suite 2, New Milford, Ohio 43068
 Phone (773) 524-6509 Fax (773) 784-0442
 www.mastellermoler.com

DATE: 4/8/2025
 SCALE: 1"=50'
 SHEET: 7 OF 15
 FILE NO.:
 DRAWN BY: M
 APPROVED BY: DMT
 DRAWING NAME: 25025025





DAVID TAYLOR P.S.M. 5243

David Taylor

NVR, Inc.

PREPARED FOR

BY	REVISION	DATE

Masteller, Moler & Taylor, Inc.
 Professional Surveyors and Mappers
 Land Surveying Business LB 4644
 1525 27th Street, Suite 2, New River, Florida 32803
 Phone (772) 284-8200 Fax (772) 784-0442
 www.mastellermoler.com



DATE: 4/8/2025

SCALE: 1"=50'

SHEET: 14 OF 15

FILE NO.:

PROJECT:

DRAWN BY:

APPROVED BY:

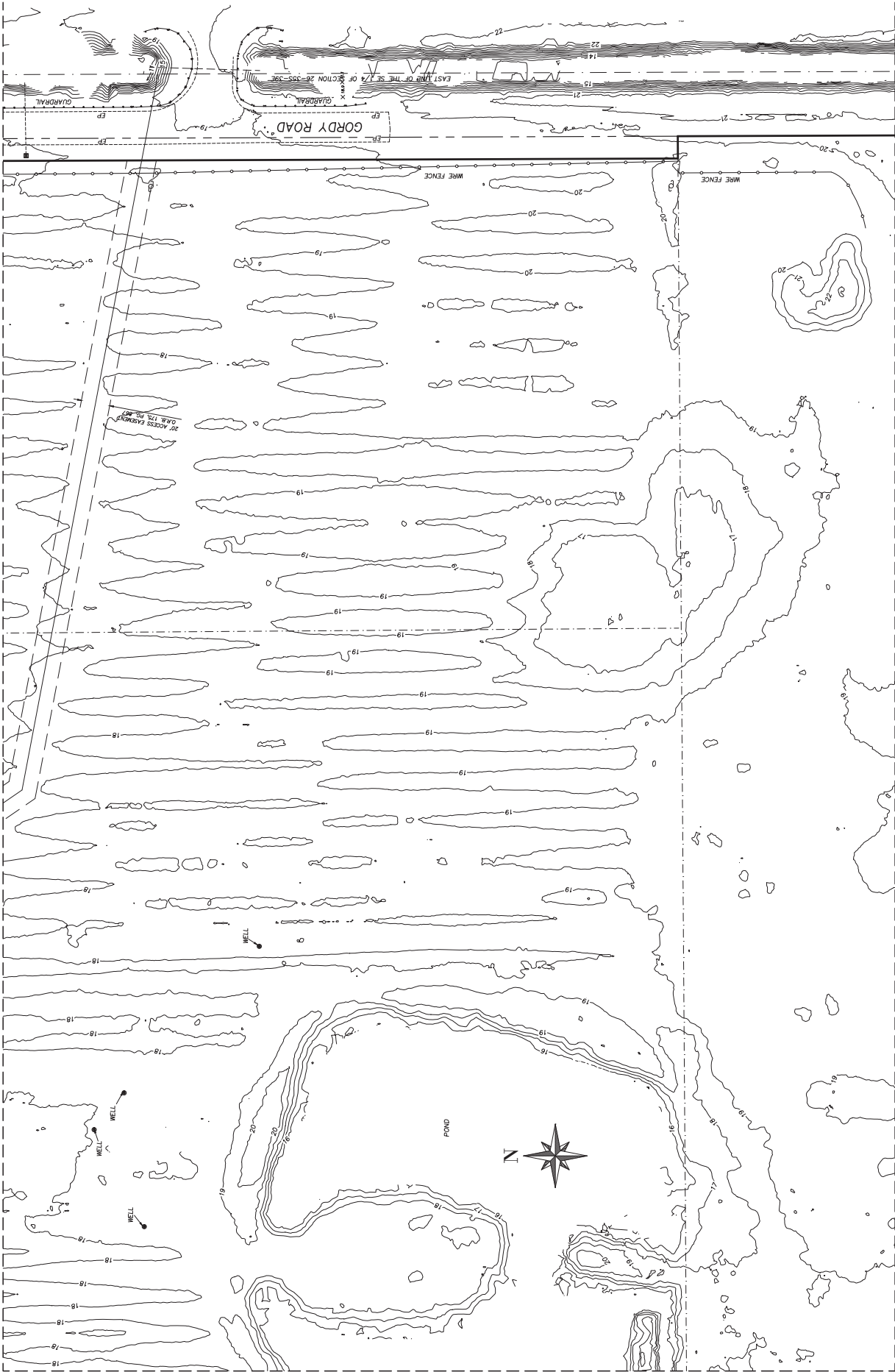
DWT

DRAWING NAME:

5243.dwg

MATCHLINE (SEE SHEET 13)

MATCHLINE (SEE SHEET 15)



MATCHLINE (SEE SHEET 10)

MATCHLINE (SEE SHEET 15)



MATCHLINE (SEE SHEET 10)



DAVID TAYLOR P.E. 2543
Professional Engineer
State of North Carolina
No. 2543
Exp. 12/31/2025
David Taylor
1000 S. W. 10th St., Suite 200
Fayetteville, NC 28533
Phone: 919.487.1234
Fax: 919.487.1235
www.davidtaylorpe.com

NVR, Inc.

PREPARED FOR

BY	REVISION	DATE

Masteller, Moler & Taylor, Inc.
Professional Surveyors and Mappers
Land Surveying Business LB 4644
1625 27th Street, Suite 2, New Hope, North Carolina 28560
Phone: (772) 584-8509 Fax: (772) 794-0442
www.mastellermoler.com



DATE: 4/8/2025
SCALE: 1"=40'
SHEET NO.: 19
FILE NO.: 15 OF 15
FILE NO.:
DRAWN BY:
CHECKED BY:
APPROVED BY:
DATE:
DRAWING NAME:
SCALE: