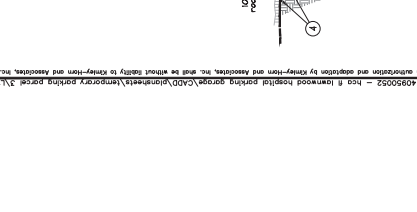
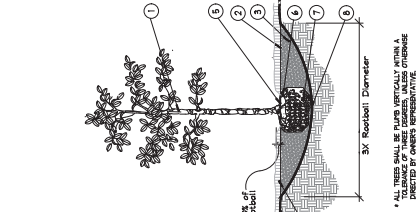
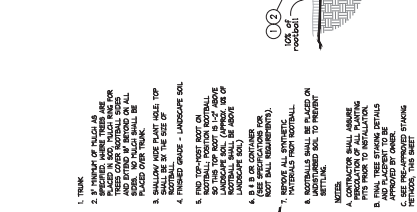
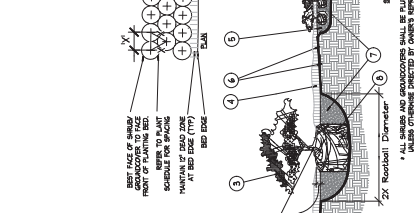
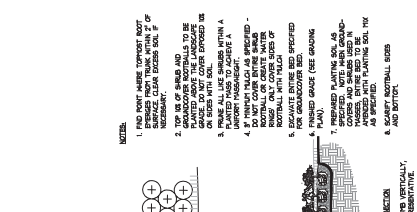
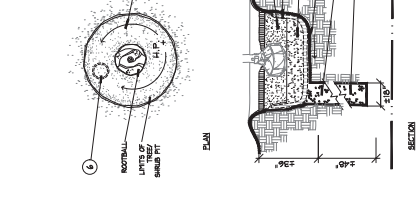
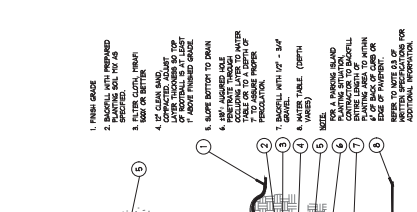
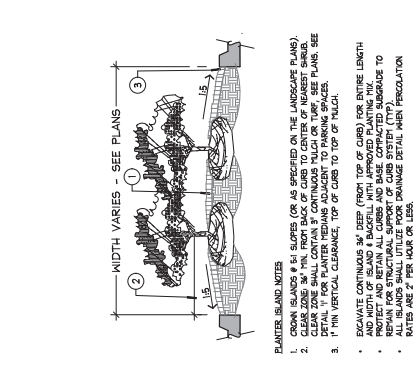


KHA PROJECT 149505022		DESIGNED BY BKM	CHECKED BY BKM	TOR
SCALE AS SHOWN		DATE JAN 29 2026	2026.01.28	10:06:18-0508
SHEET NUMBER L1.10				
HCA FL LAMWOOD TEMPORARY CONSTRUCTION USAGE AND LAYDOWN YARD FL		LANDSCAPE DETAILS		
REVISIONS No. DATE BY		KIMLEY-HORN AND ASSOCIATES, INC. 1920 KENNEDY WAY SUITE 200 WEST PALM BEACH, FL 33411 PHONE: 561-832-1575 WWW.KIMLEY-HORN.COM REGISTRY NO. 35156		



SECTION	NTS
A	Tree Planting
B	Shrub / Groundcover Planting
C	Poor Drainage Condition
D	Planted Parking Lot Islands / Medians
E	Parking Space/Curb Planting
F	Planting on a Slope
G	Planter Island Notes
H	Planter Island Notes

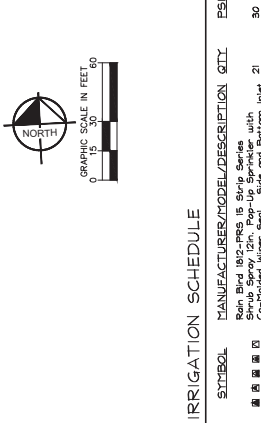
No.	REVISIONS	DATE	BY

KIMLEY-HORN
 1920 WINDY WAY SUITE 200 WEST PALM BEACH, FL 33411
 PHONE 561-844-0865 FAX 561-838-8175
 REGISTRY NO. 35196
 WWW.KIMLEY-HORN.COM

TIGER
 2026.01.28
 15:06:37:0508

KHA PROJECT
 JAN. 2026
 SCALE AS SHOWN
 140950052

HCA FL LAWNWOOD
 TEMPORARY
 CONSTRUCTION USAGE
 AND LAYDOWN YARD
 SHEET NUMBER
 L2.00



IRRIGATION SCHEDULE

SYMBOL	MANUFACTURER/MODEL/DESCRIPTION	QTY	PSI
⊕	Rain Bird 1912-1R6 18' Strip Series Shut-Off Spray, 12in. Pop-Up Sprinkler with 1/2in. NPT Female Threaded Inlet, 21 Pressure Regulating Device.	21	30
⊕	Rain Bird 1402 Flood Flood Bubbler, 4in. On Flex hose per detail.	17	30

SYMBOL	MANUFACTURER/MODEL/DESCRIPTION	QTY
⊕	Rain Bird 1912-1R6 18' Strip Series Shut-Off Spray, 12in. Pop-Up Sprinkler with 1/2in. NPT Female Threaded Inlet, 21 Pressure Regulating Device.	21
⊕	Rain Bird 1402 Flood Flood Bubbler, 4in. On Flex hose per detail.	17
⊕	Rain Bird ESP-410EB Remote Control Valve, Low Flow Operating Mode, 1/2in. NPT Female Threaded Inlet, Technology for Reliable Performance in Dirty Water Irrigation Applications.	2
⊕	Rain Bird ESP-410EB Remote Control Valve, Low Flow Operating Mode, 1/2in. NPT Female Threaded Inlet, Technology for Reliable Performance in Dirty Water Irrigation Applications.	2
⊕	Rain Bird RSD-CEX Rain Bird RSD-CEX, 1/2in. NPT Female Threaded Adapter, extension wire.	1
⊕	Pump 1.5 HP 1 1/2 HP PUMP, SINGLE PHASE, 220V, 11 AMPS, 1/2in. NPT Female Threaded Inlet, 4x40 PSI PUMP TO PROVIDE A MAX OF 32 GPM	1
⊕	Point of Connection 2" Malt	1
---	Irrigation Lateral Line: PVC Class 200 SDR 21 ± 1.07 IF	± 108-9 IF
---	Irrigation Mainline: PVC Schedule 40	AS NEEDED
---	Pipe Sleeve: PVC Schedule 40	AS NEEDED

PLAN IS DIAGNOSTIC.
 CONTRACTOR SHALL
 EQUIPMENT IN LANDSCAPE
 OR AREAS WITHIN
 PROJECT LIMITS.

REFER TO MASTER IRRIGATION
 SCHEDULE ON THIS SHEET AND
 DETAILS ON SHEETS LEGAILED

- ### IRRIGATION SYSTEM NOTES
- CONTRACTOR SHALL REFER TO THE IRRIGATION DETAILS, IRRIGATION SCHEDULE ON THIS SHEET AND DETAILS ON SHEETS LEGAILED FOR FURTHER AND COMPLETE INSTRUCTIONS. CONTRACTOR'S PERMITS FOR ANY DISCREPANCIES SHALL BE BROUGHT TO THE ATTENTION OF THE DESIGNER. CONTRACTOR SHALL VERIFY THE DRAINING CAPABILITY OF THE SOILS AND MAKE NECESSARY ADJUSTMENTS TO THE IRRIGATION SYSTEM TO PREVENT OVERWATERING. ANY SUBSTITUTIONS FOR SPECIFIED IRRIGATION EQUIPMENT MUST BE APPROVED BY THE LANDSCAPE ARCHITECT OR OWNER.
 - CONTRACTOR SHALL VERIFY THE LOCATION OF ALL EXISTING UNDERGROUND UTILITIES AS NECESSARY TO AVOID DAMAGE TO EXISTING UNDERGROUND UTILITIES. CONTRACTOR SHALL FIELD ADJUST LOCATION OF IRRIGATION EQUIPMENT AND ADJUSTMENTS SHALL BE COMPLETED AT THE CONTRACTOR'S EXPENSE AND SHALL BE COORDINATED WITH THE OWNER'S REPRESENTATIVE AND APPROVED BY THE LANDSCAPE ARCHITECT OR OWNER.
 - CONTRACTOR SHALL FAMILIARIZE HIM/HERSELF WITH THE LIMITS OF WORK AND EXISTING CONDITIONS AND VERIFY ALL INFORMATION. IF DISCREPANCIES ARE FOUND, CONTRACTOR SHALL NOTIFY THE OWNER'S REPRESENTATIVE IN WRITING WITHIN SEVEN CALENDAR DAYS OF NOTICE.
 - IRRIGATION PLAN IS DIAGNOSTIC. EQUIPMENT SHOWN ON IMPERVIOUS SURFACES IS FOR GRAPHIC CLARITY UNLESS OTHERWISE NOTED. CONTRACTOR SHALL VERIFY ALL EQUIPMENT IS INSTALLED WITHIN PROPERTY LIMITS.
 - THE IRRIGATION SYSTEM IS DESIGNED TO OPERATE WITH A SOURCE PRESSURE OF 30 PSI. CONTRACTOR SHALL VERIFY THE SOURCE PRESSURE AND MAKE NECESSARY ADJUSTMENTS TO THE SYSTEM TO OPERATE WITH A SOURCE PRESSURE OF 30 PSI.

