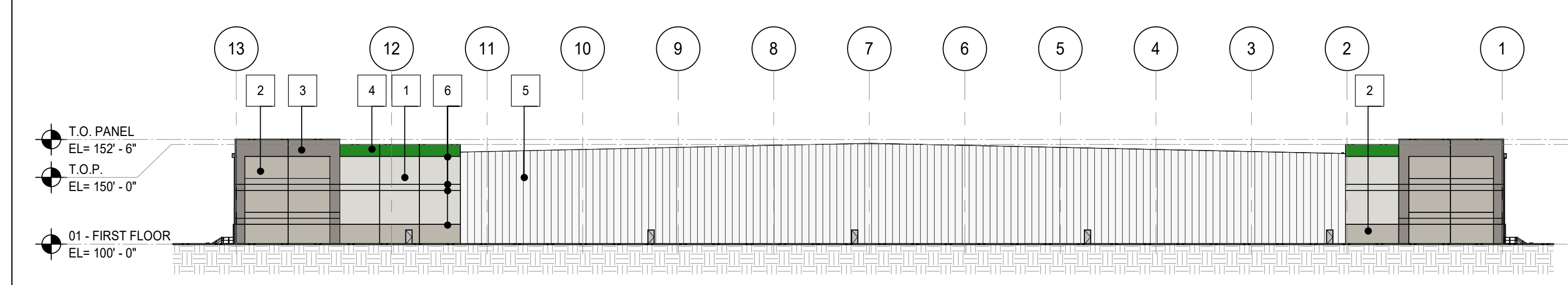
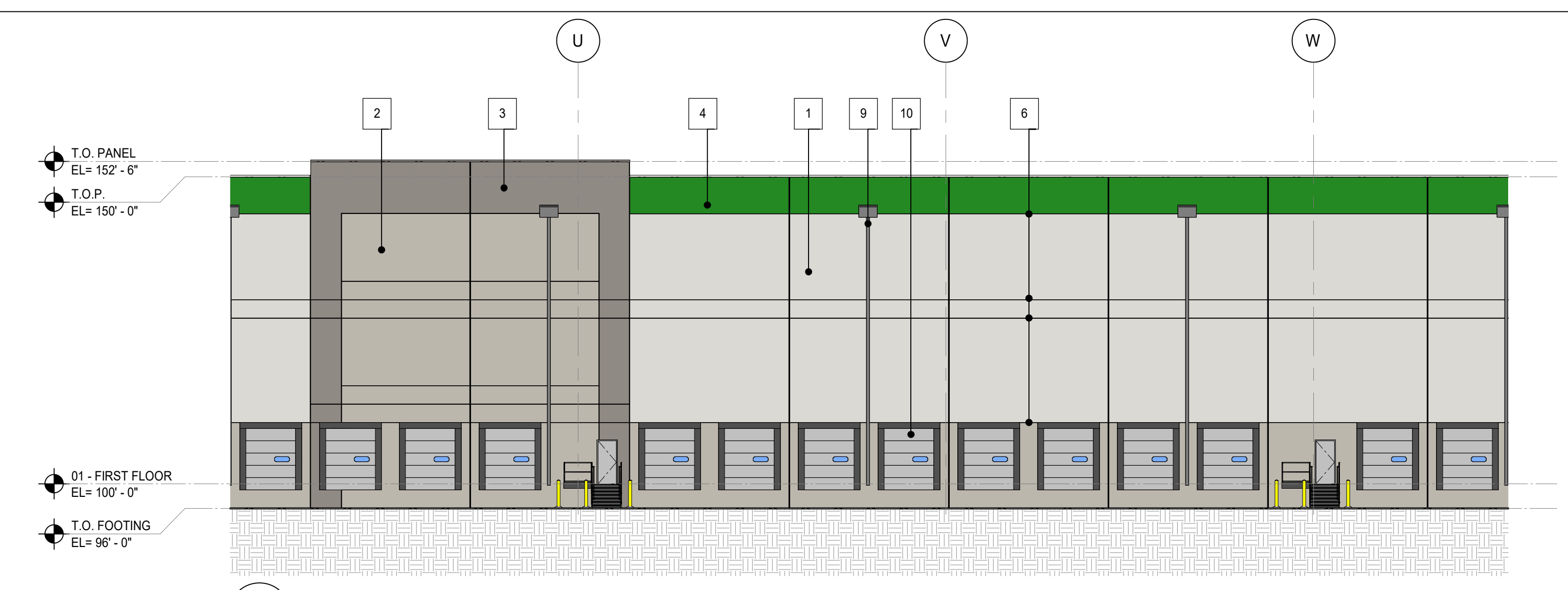


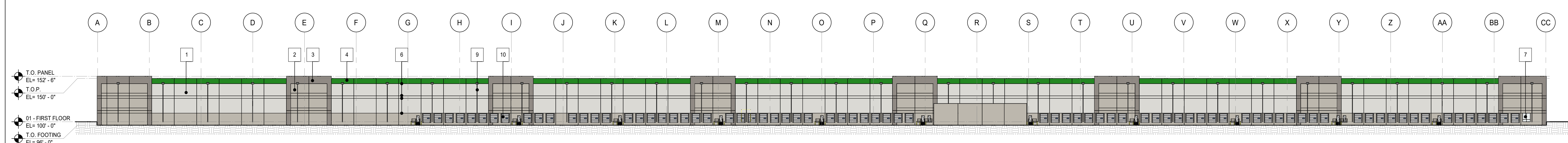
1 ELEVATION - NORTH
1" = 50'-0"



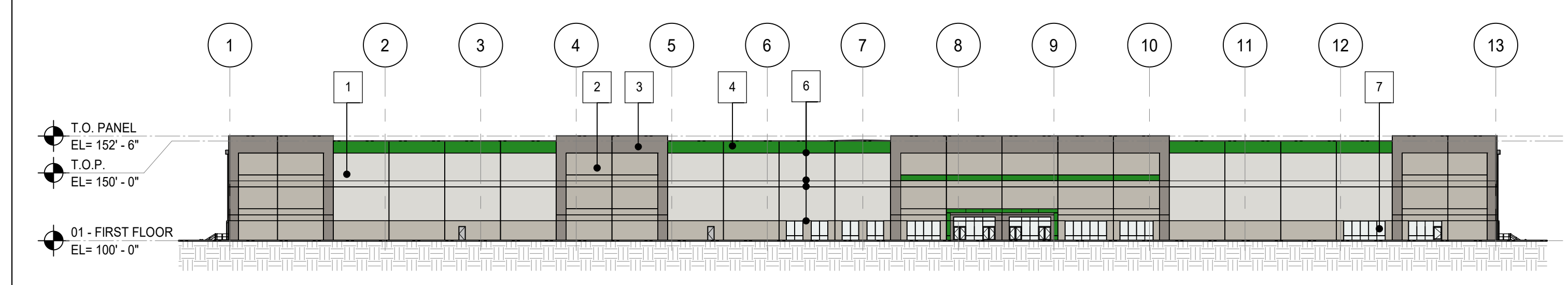
2 ELEVATION - EAST
1" = 50'-0"



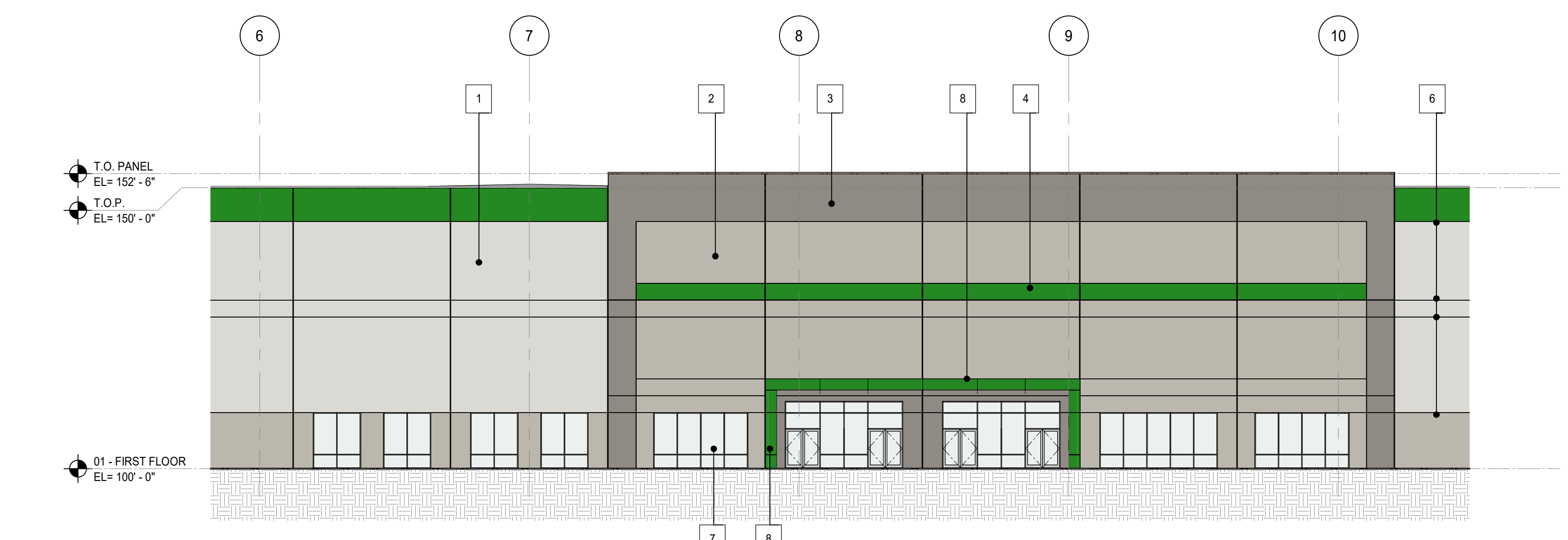
5 ENLARGED ELEVATION - SOUTH
1/16" = 1'-0"



3 ELEVATION - SOUTH
1" = 50'-0"



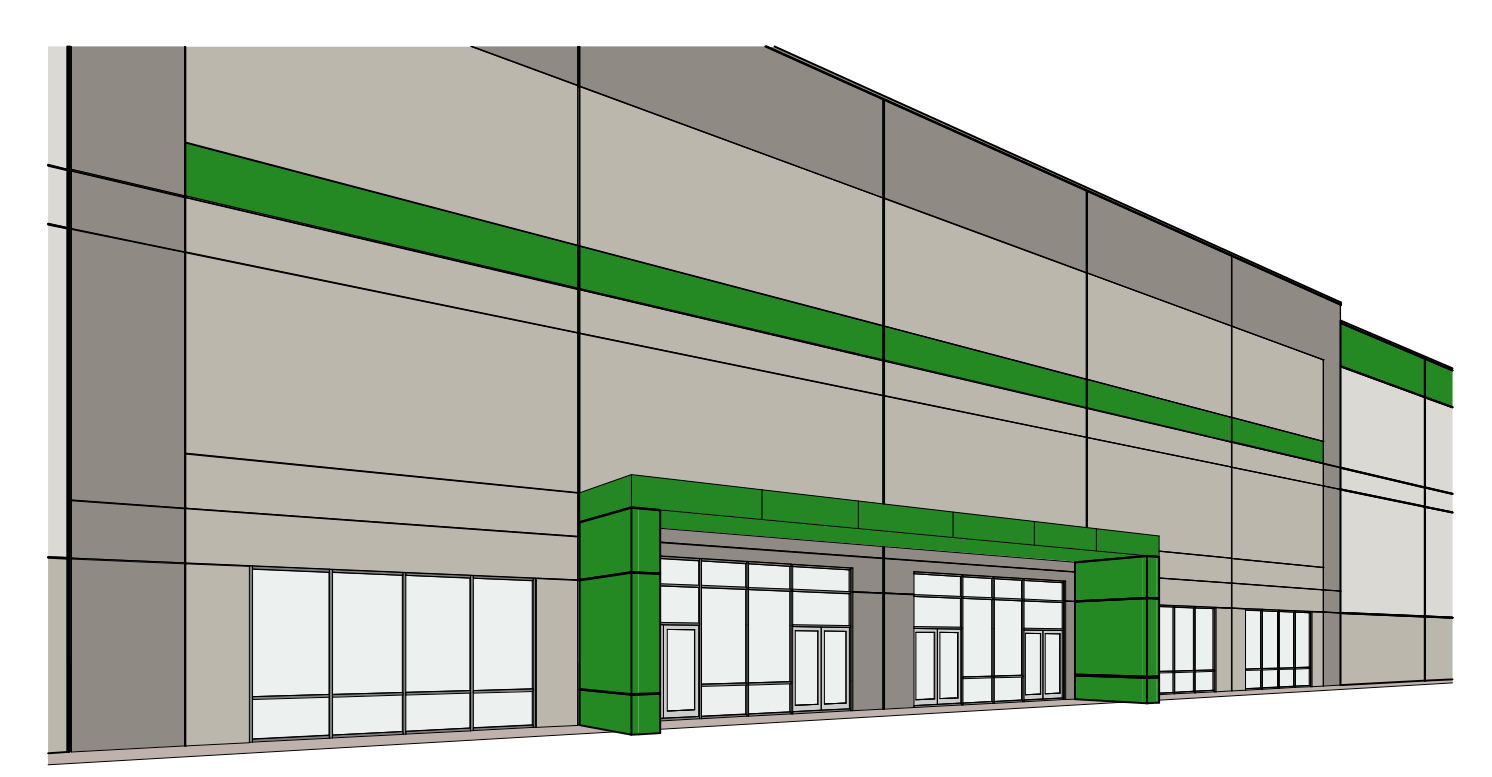
4 ELEVATION - WEST
1" = 50'-0"



6 ENLARGED ELEVATION - WEST
1/16" = 1'-0"

MATERIAL & KEYNOTE LEGEND

1	CONCRETE TILT-UP PANEL PAINT SHERWIN WILLIAMS SW 7946 - "FIRST STAR"	6	PAINTED REVEAL
2	CONCRETE TILT-UP PANEL PAINT SHERWIN WILLIAMS SW 7016 - "MINDFUL GRAY"	7	VISION GLASS IN ANODIZED ALUMINUM FRAME
3	CONCRETE TILT-UP PANEL PAINT SHERWIN WILLIAMS SW 7018 - "DOVE TAIL"	8	ALUMINUM COMPOSITE MATERIAL CANOPY
4	CONCRETE TILT-UP PANEL PAINT HEX #248823 - "WEB FOREST GREEN"	9	PREFINISHED COLLECTOR BOX AND DOWNSPOUT
5	INSULATED METAL PANEL LIGHT GREY	10	OVERHEAD DOCK DOOR



7 ENTRANCE PERSPECTIVE

Project No.	2427.016.00
Drawn By	ABE
Checked By	EH
Date	12/22/2025

NOTICE: The designs shown and described herein including all technical drawings, graphics, and models thereof, are proprietary and cannot be copied, duplicated or commercially exploited, in whole or in part, without express written permission of RSP Architects. These are available for limited review and evaluation by clients, consultants, contractors, government agencies, vendors and office personnel only in accordance with this Notice.

ISSUES / REVISIONS

NO.	DATE	DESCRIPTION