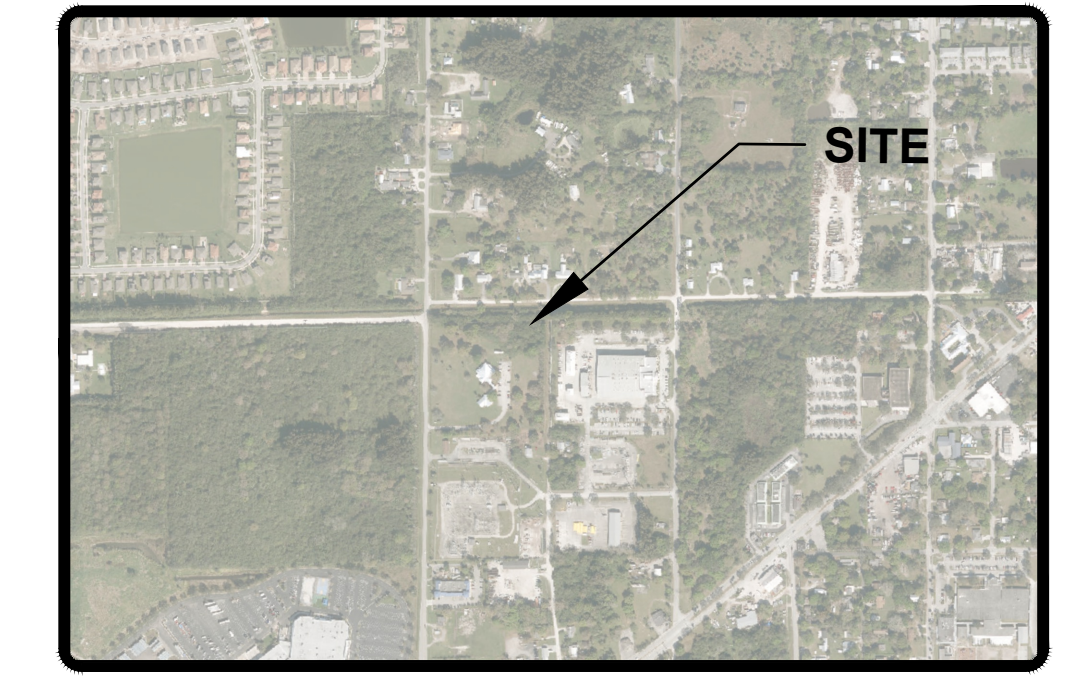




FILE LOCATION: Z:\DC\2025\250 - GRACEWAY VILLAGE\ENGINEERING\AUTOCAD\DWG\250250\250 CSP 3-16-26.DWG, 2025.03.16, 1:29 PM  
 THIS DOCUMENT, TOGETHER WITH THE CONCEPTS AND DESIGNS PRESENTED HEREIN, AS AN INSTRUMENT OF SERVICE, IS INTENDED ONLY FOR THE SPECIFIC PURPOSE AND CLIENT FOR WHICH IT WAS PREPARED. REUSE OF AND IMPROPER RELIANCE ON THIS DOCUMENT WITHOUT WRITTEN AUTHORIZATION AND ADOPTION BY HALEYWARD, INC. SHALL BE WITHOUT LIABILITY TO HALEYWARD, INC.



VICINITY MAP  
SCALE: 1:1,000

PALMS PRESERVED	
TREE #	TYPE
T-8	PALM
T-9	PALM
T-15	PALM
T-19	PALM
T-23	PALM
T-24	PALM
T-31	PALM
T-32	PALM
T-38	PALM
T-41	PALM
T-42	PALM
T-55	PALM
T-56	PALM
T-57	PALM
T-60	PALM
T-67	PALM
T-68	PALM
T-70	PALM
T-71	PALM

PALMS REMOVED	
TREE #	TYPE
T-13	PALM
T-29	PALM
T-35	PALM
T-36	PALM
T-47	PALM
T-53	PALM
T-54	PALM

TREES PRESERVED	
TREE #	TYPE / DBH
T-7	LAOAK 20.2"
T-10	LIOAK 28.3"
T-11	LIOAK 20.3"
T-12	LIOAK 17.3"
T-14	LIOAK 21.4"
T-20	LIOAK 25.6"
T-21	LIOAK 26.4"
T-26	LAOAK 19.1"
T-27	LAOAK 33.2"
T-30	LAOAK 35"
T-33	LAOAK 35.5"
T-34	LAOAK 27.0"
T-37	LAOAK 35.8"
T-39	LAOAK 23.8"
T-40	PINE 24.3"
T-43	LAOAK 30.2"
T-44	LAOAK 36.2"
T-45	LAOAK 32.5"
T-46	LAOAK 25.0"
T-50	LAOAK 32.5"

TREES PRESERVED	
TREE #	TYPE / DBH
T-51	LAOAK 31.0"
T-52	LAOAK 31.9"
T-58	LAOAK 18.0"
T-59	LAOAK 35.7"
T-63	LIOAK 19.1"
T-64	LIOAK 33.6"
T-65	LAOAK 26.6"
T-66	LAOAK 32.2"
T-69	LAOAK 23.5"
T-72	LAOAK 21.5"
T-73	LAOAK 17.0"
T-74	LAOAK 17.8"
T-75	LAOAK 19.8"

TREES REMOVED	
TREE #	TYPE / DBH
T-16	LAOAK 29.4"
T-17	PINE 31.8"
T-18	LAOAK 30.9"
T-22	LAOAK 20.4"
T-25	LAOAK 23.7"
T-28	LAOAK 31.2"
T-48	PINE 30.1"
T-49	PINE 17.2"
T-76	LAOAK 36.1"

SITE TREE SUMMARY				
TYPE OF TREE	TOTAL # TREES	TOTAL SIZE DBH(INCHES)	PRESERVATION CREDIT	REQUIRED MITIGATION
OAK TREES PRESERVED	32	853	853	0
OAK TREES REMOVED	6	171.7	0	171.3
PINE TREES PRESERVED	1	24.3	24.3	0
PINE TREES REMOVED	3	79.1	0	79.1
PALM TREES TO BE PRESERVED	19	N/A	19	0
PALM TREES TO BE REMOVED	7	N/A	0	7
TOTAL # OF TREES: 68				
TOTAL # OF TREES MITIGATED: 16				

**TOTAL PROJECT TREE MITIGATION**

TOTAL TREE MITIGATION	
MITIGATION RATIO = 1:1 (DBH)	
+ 877.3 (TREES TO BE PRESERVED)	
- 250.8 (TREES TO BE REMOVED)	
+ 626.5 MITIGATION CREDITS	

TOTAL PALM TREE MITIGATION	
MITIGATION RATIO = 1:1	
+ 1 (PALM TREES TO BE PRESERVED)	
- 3 (PALM TREES TO BE REMOVED)	
- 2 MITIGATION CREDITS	

**TREE NOTES:**

- PALM TREES HAVE A CLEAR TRUNK HEIGHT OF 10' OR GREATER.
- OAK & PINE TREES ARE MEASURED @ (DBH) 4" ABOVE GRADE.
- PER COUNTY REQUIREMENTS ALL EXISTING PALM TREES THAT ARE IN GOOD CONDITION THAT DO NOT REMAIN IN PLACE MUST BE RELOCATED/REPLANTED ON THE SITE.
- METHOD OF MITIGATION PER SLC: FEE IN LIEU OF.

LEGEND	
	EX. OAK TREE TO REMAIN # - TREE TAG
	EX. PALM TREE TO REMAIN # - TREE TAG
	EX. PINE TREE # - TREE TAG
	EX. OAK TREE TO BE REMOVED. # TREE TAG.
	EX. PALM TREE TO BE REMOVED. # - TREE TAG.
	EX. PINE TREE TO BE REMOVED. # - TREE TAG.
	EX. OAK TREE NOT INCLUDED (OFFSITE)
	EX. PALM TREE NOT INCLUDED (OFFSITE)
	EX. PINE TREE NOT INCLUDED (OFFSITE)
	EX. OAK TREE NOT INCLUDED (OFFSITE)
	EX. PALM TREE NOT INCLUDED (OFFSITE)

**HALEY WARD**  
 ENGINEERING | ENVIRONMENTAL | SURVEYING  
 LAND PLANNING | INTERIOR DESIGN  
 10250 Village Parkway, Suite 201  
 Port Saint Lucie, Florida 34987  
 772.462.2455

---

PROJECT: GRACEWAY VILLAGE  
FORT PIERCE, FLORIDA

---

TITLE: TREE MITIGATION PLAN

---

DATE: 3/16/2026	SCALE: AS SHOWN
DRAWN BY: ---	DESIGNED BY: ---
CHECKED BY: ---	
PROJECT No.: 20-250 CSP 3-16-26.DWG	CERTIFICATE OF AUTHORIZATION No.: 32664
DRAWING No.:	REV:

TREE-101