

# Graceway Village

1780 Hartman Road  
City of Fort Pierce, Florida

City Project Number:

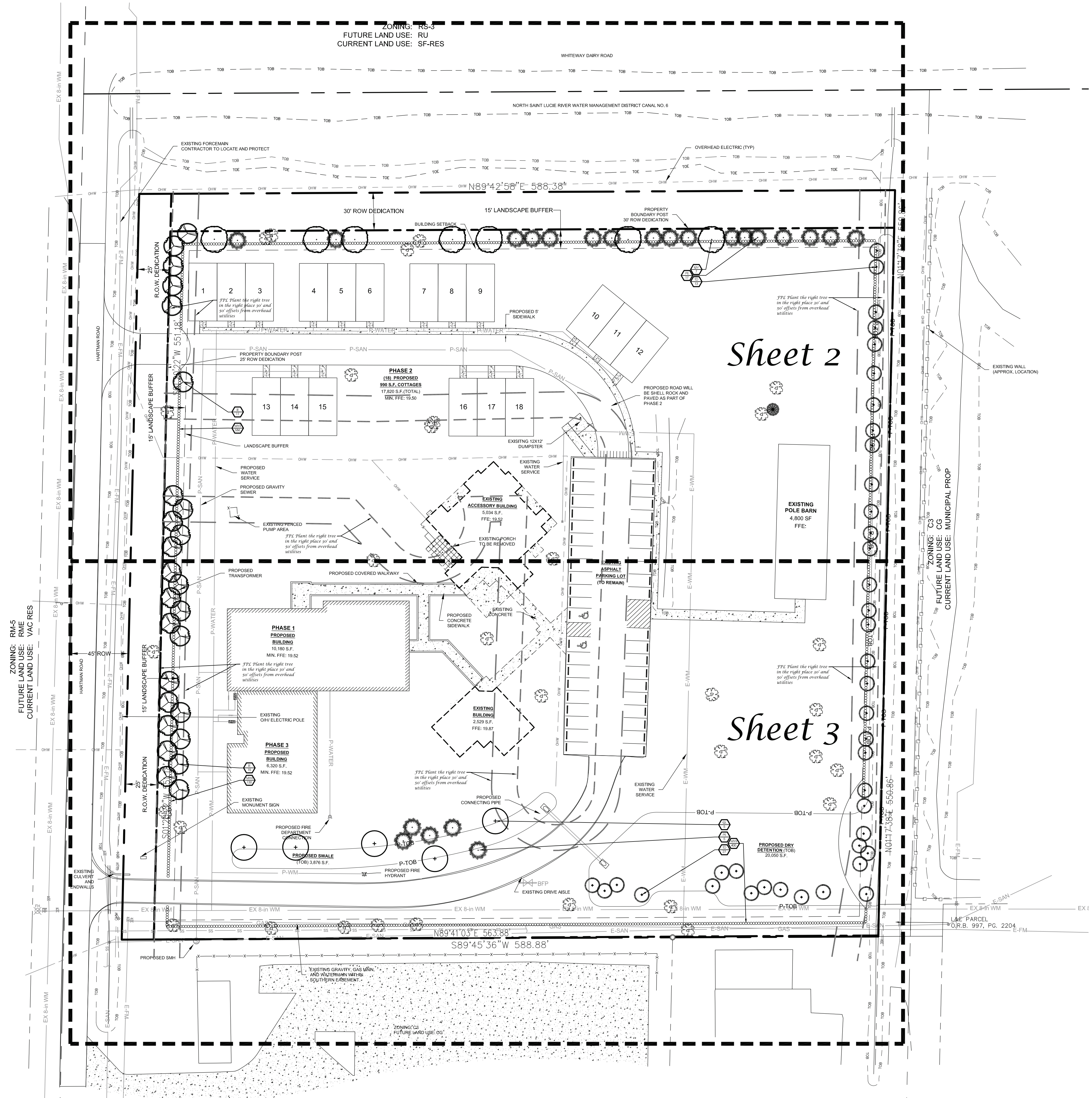
Jeffrey W. Smith, RLA  
Florida Registration Number:  
LA0001635

Job No. 26-0302  
Drawn By JWS  
Submittal Dates 3-19-2026

Revision Dates

These drawings are the property of the landscape architect and are not to be used for other projects except by written permission from the landscape architect. Report any discrepancies immediately to the landscape architect.

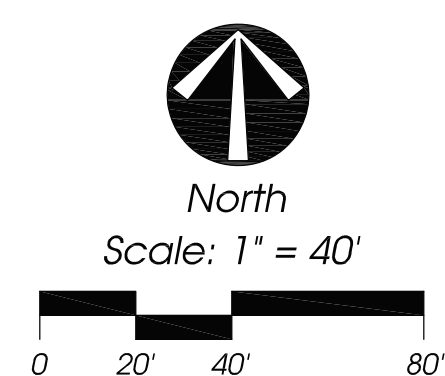
L-1 4  
Sheet of



ELECTRONIC SIGNATURE AND SEAL  
Jeffrey W. Smith, RLA  
Prepared, Reviewed & Supervised By:  
Conceptual Design Group, Inc.  
900 East Ocean Boulevard, Suite 130d  
Stuart, Florida 34994  
(772) 344-2340

Jeffrey W Smith, RLA  
2026.03.20 01:15:09 -04'00'

# Landscape Plan



ZONING: RS-3  
 FUTURE LAND USE: RU  
 CURRENT LAND USE: SF-RES

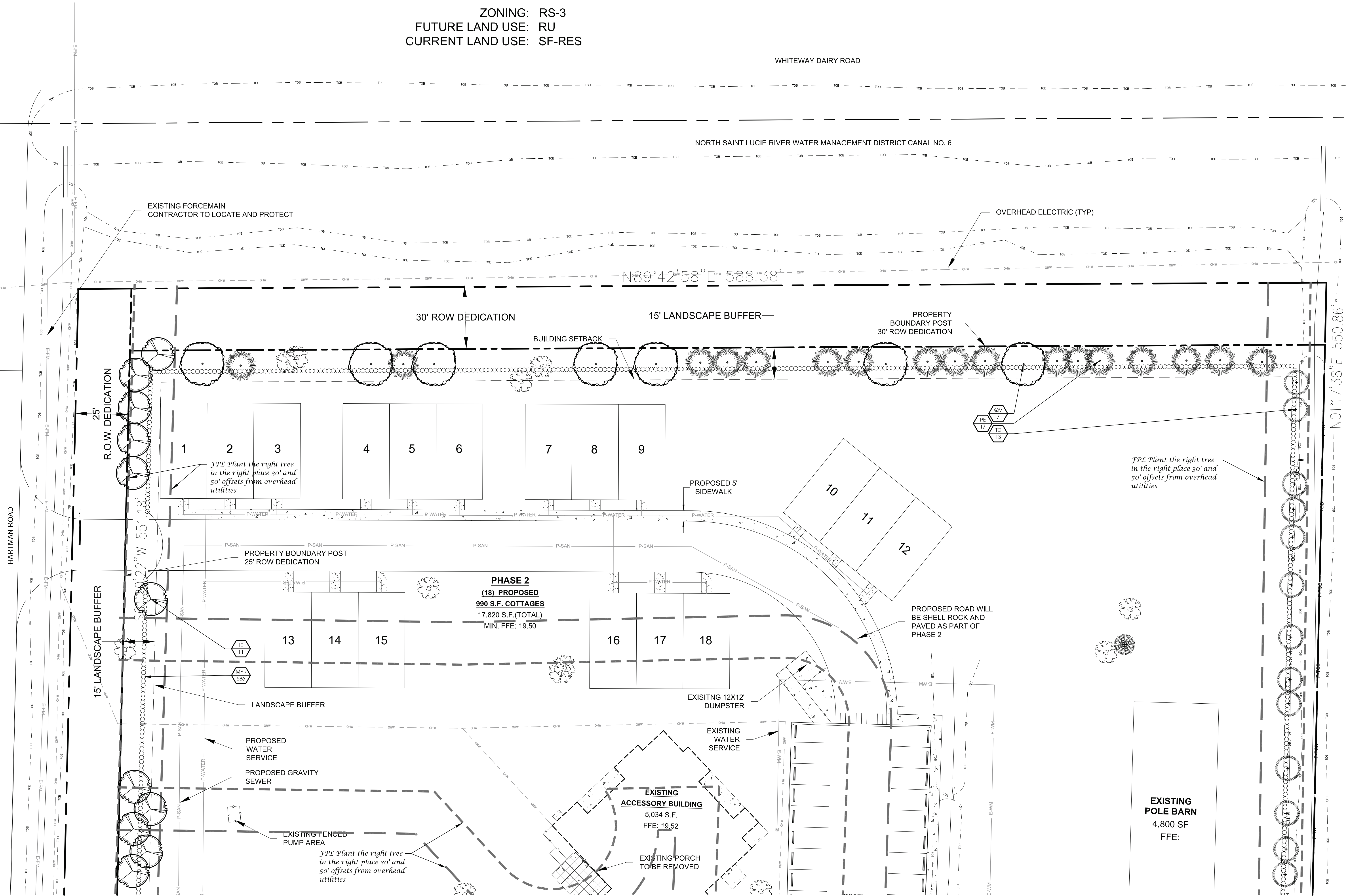
WHITEWAY DAIRY ROAD

NORTH SAINT LUCIE RIVER WATER MANAGEMENT DISTRICT CANAL NO. 6

**Conceptual  
 Design  
 Group, Inc.**

Landscape Architecture - Site Planning

900 East Ocean Boulevard, Suite 130d  
 Stuart, Florida 34994  
 (772) 344-2340  
 LA: 0001635



**Graceway Village**

1780 Hartman Road  
 City of Fort Pierce, Florida

City Project Number:

Jeffrey W. Smith, RLA  
 Florida Registration Number:  
 LA 0001635

Job No. 26-0302  
 Drawn By JWS  
 Submittal Dates 3-19-2026

Revision Dates

These drawings are the property of the landscape architect and are not to be used for other projects except by written permission from the landscape architect. Report any discrepancies immediately to the landscape architect.

L-2 4  
 Sheet of

**Landscape Plan**

