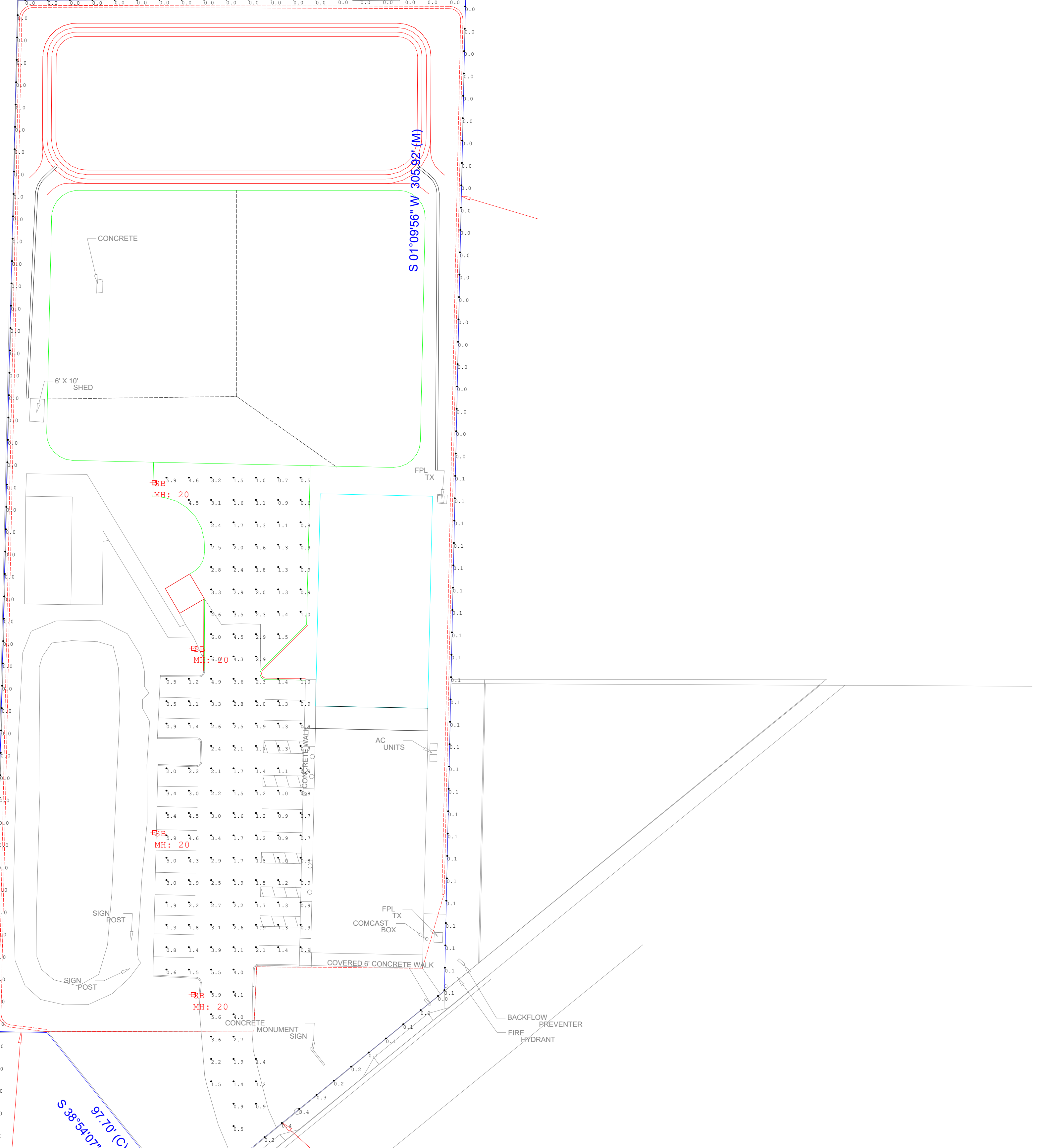


467.4' (D/P1)
S 01°18'55" W 461.25' (C)

200.42' (D & C)

S 01°09'56" W 305.92' (M)



S 36°54'07" E 97.70' (C)
S 88°44'07" E 23.77' (C) EAST 23.9' (D)

N 50°52'53" E 150.05' (C & M)
BASIS OF BEARINGS
SOUTHWESTERLY 147.43' (D/P1)


Calculation Summary							
Label	CalcType	Units	Avg	Max	Min	Avg/Min	Max/Min
Parking and Pavement	Illuminance	Fc	2.17	6.0	0.5	4.34	12.00
Property Line	Illuminance	Fc	0.09	0.4	0.0	N.A.	N.A.

Luminaire Schedule								
Symbol	Qty	Label	Arrangement	Description	LLF	Luminaire Lumens	Luminaire Watts	Total Watts
☐	4	SB	Single	Xtra Light VNTM-20000L-40K-DIM-4M-N-XX-XX-HSS	0.900	14968	152	608

THE PORCH FACTORY

CITY OF FORT PIERCE, FL

LIGHTING FIXTURE SCHEDULE

TYPE	IMAGE	MANUFACTURER	CATALOG NUMBER	DESCRIPTION	LAMPS	DIMMING	VOLTAGE	MOUNTING	REMARKS	INPUT WATTS
					TYPE					
SB		XTRA LIGHT	VTNM-20000L-40K-[VOLTAGE]-4M-N-[FINISH]-XX-HSS	AREA / PARKING LOT LIGHT FIXTURE W/ HOUSE SHIELD	INTEGRATED LED	0-10V	TBC	TENON	MOUNTED @ 20'-0" AFG	142W

LIGHTING SCHEDULE NOTES:

1. For pricing please email Genesis Lighting at quotes@genesislighting.net, for technical questions please contact Brian Meneses @ 772-919-5670 (Bmeneses@genesislighting.net)
2. No substitutions allowed without prior approval by architect, engineer or design team
3. Contractor to verify all voltages, mounting and run lengths prior to final bid and installation of fixtures
4. Verify correct mounting for each fixture with Architectural reflected ceiling plans and/or Site Plans



Project Name	Type
Catalog #	Date

VIENTO AREA LUMINARE



APPLICATIONS

- Area Lighting
- Retail Spaces
- Street Lighting
- Auto Dealerships & Sales Lots
- Parks & Recreation Areas
- Safety & Security

APPROVALS

- ETL Listed
- Complies with UL 1598 and CSA C22.2
- Suitable for wet locations
- 3G Vibration Rated
- IP66 Rated
- BAA Compliant
- RoHS Compliant
- ATAL Tested www.ata-labs.com
- Select models DLC Premium. For a complete list of DLC Premium products visit: www.xtralight.com/dlc or qpl.designlights.org



FEATURES

- Lumen packages ranging from 5000L to 65000L.
- Outstanding photometric performance results in excellent uniformity, optimal pole spacing and lower power density.
- Low profile architectural design offers a contemporary appearance with excellent light output.
- Enhanced foot candles delivered utilizing multiple optical options.
- Full cut-off optics with zero uplight.

CONSTRUCTION

- Thermal management achieved with a one-piece die-cast aluminum has integral heat sink fins and a hinged electrical compartment.
- Thermoset powder coat, available in bronze, white or custom colors (consult factory)
- IP66, precision molded, polycarbonate optics providing impact resistance and UV stabilization.
- Upgraded door to provide better protection from water intrusion.

ELECTRICAL

- Voltage: 120-277V or 347-480V AC input
- Driver: Class 1, constant current, calibrated to lumen package (0-10V dimming standard)
- Surge Protection: 20kA standard.
- Operating temperature: -40°C to +50°C (-40°F to +122°F)

CONTROLS

- Programmable smart sensor and twist-lock receptacle control options available.

MOUNTING

- Integral arm with key hole slot facilitates quick and easy installation.
- Adjustable slip fitter, round pole adaptor, universal pole adaptor, and other mounting options available as accessories.

WARRANTY

- Backed by XtraLight's limited 5-year warranty.

ORDER LOGIC

SAMPLE CATALOG NUMBER: **VNTL-55000L-50K-DIM-5SN-BZ**

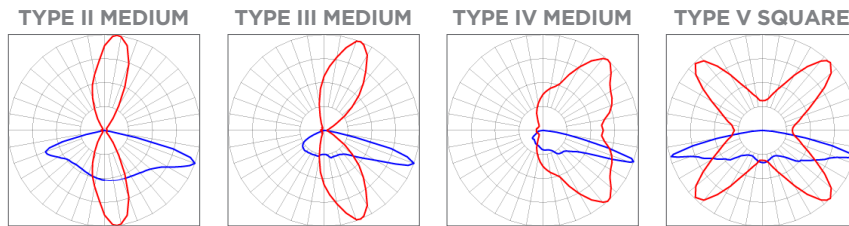
SIZE	MODEL	CCT ¹	DRIVER	OPTICS	ORIENTATION	FINISH	CONTROLS	OPTIONS		
S Small	5000L	30K 3000K	DIM Dim 0-10V, 120-277V	2M Type II Medium	N Normal (forward)	BZ Bronze	XX No Fixture Controls	HSS House-side Shield		
	10000L	40K 4000K							ASF ⁶ Adjustable Slip Fitter Cord Whip	
	15000L	50K 5000K	3M Type III Medium	L Left	WH White	IS3 ⁵ IR Smart Sensor, 20'H/40'D	37 NEMA 3-Pin Twist-Lock Receptacle			
	18000L	DIMO ² Dim 0-10V, 120-277V						4M Type IV Medium	R Right	CC ⁴ Custom Color
20000L ⁹	HVD to off		5S ³ Type V Square	BS3 ⁵ Bluetooth Smart Sensor, 20'H/40'D	77 NEMA 7-Pin Twist-Lock Receptacle					
M Medium	15000L	347-480V				5S ³ Type V Square	BS7 ⁵ Bluetooth Smart Sensor, 40'H/100'D	CAS Casambi Controlled	AUT Autani Controlled	SP ⁸ Selectable Power
	20000L		SWX Sensorworx Controlled							
	25000L			SYN Synapse Controlled						
	30000L				CUS Custom Sensor (Factory Installed)					
	35000L									
40000L ⁹										
L Large	30000L	60000L ⁹	65000L ⁹			10Y 10 Year Warranty				
	35000L									
	40000L									
	45000L									
	50000L									
	55000L									
	60000L ⁹									

1. Custom CCT available from 2700K - 6500K.
 2. Some models may not be available with **DIMO** (Dim to off).
 3. The **5S** (Type V Square) optic option is not available with **L** (Left) or **R** (Right) orientations.
 4. Provide the desired RAL number for custom colors.
 5. Sensor integrated in bottom fixture. (See dimensional drawing)
 6. The **ASF** (Adjustable Slip Fitter Cord Whip) must be paired with the Adjustable Slip Fitter accessory (sold separately).
 7. Photocell ordered separately. (See page 6)
 8. See page 3 for selectable power table.
 9. S - 20000L, M - 40000L, L - 60000L, L - 65000L up to +40°C max.

VIENTO AREA LUMINARE

VNT

ISO LINES



• Red: Horizontal / Blue: Vertical

PHOTOMETRIC DATA

STANDARD

SIZE	MODEL	OPTICS	3000K		4000K		5000K		WATTAGE	BUG RATING
			LUMENS	EFFICACY	LUMENS	EFFICACY	LUMENS	EFFICACY		
VNTS SMALL	5000L	5S	5172	153	5387	160	5388	160	34	B3-U0-G2
		4M	5054	150	5265	156	5266	156		B1-U0-G3
		3M	5113	152	5326	158	5327	158		B2-U0-G3
		2M	5418	161	5644	167	5645	168		B2-U0-G2
	10000L	5S	11005	155	11464	161	11466	161	71	B4-U0-G3
		4M	10765	151	11214	158	11216	158		B2-U0-G4
		3M	10855	152	11307	159	11309	159		B2-U0-G2
		2M	11533	162	12014	169	12016	169		B3-U0-G3
	15000L	5S	15252	152	15887	158	15890	158	101	B4-U0-G3
		4M	14911	148	15532	155	15535	155		B3-U0-G5
		3M	15022	149	15648	156	15651	156		B3-U0-G3
		2M	15802	157	16460	164	16463	164		B3-U0-G3
	18000L	5S	17461	147	18189	153	18192	153	119	B4-U0-G3
		4M	17270	145	17990	151	17993	151		B3-U0-G5
		3M	17206	145	17923	151	17926	151		B3-U0-G3
		2M	18315	154	19078	160	19082	160		B3-U0-G3
20000L	5S	19236	142	20037	148	20041	148	135	B4-U0-G3	
	4M	19025	141	19818	147	19822	147		B3-U0-G5	
	3M	18954	140	19744	146	19748	146		B3-U0-G3	
	2M	20176	149	21016	156	21020	156		B3-U0-G3	
VNTM MEDIUM	15000L	5S	15252	156	15887	162	15890	162	98	B4-U0-G3
		4M	14911	152	15532	158	15535	159		B3-U0-G5
		3M	15022	153	15648	160	15651	160		B3-U0-G3
		2M	15802	161	16460	168	16463	168		B3-U0-G3
	20000L	5S	22011	155	22928	161	22932	161	142	B4-U0-G3
		4M	21531	151	22428	158	22432	158		B3-U0-G5
		3M	21709	152	22614	159	22618	159		B3-U0-G3
		2M	23067	162	24028	169	24033	169		B3-U0-G3
	25000L	5S	24610	152	25635	158	25640	158	162	B5-U0-G3
		4M	23900	148	24896	154	24901	154		B3-U0-G4
		3M	23811	147	24804	153	24808	153		B4-U0-G3
		2M	25861	160	26939	166	26944	166		B4-U0-G4
	30000L	5S	30148	149	31404	155	31410	155	202	B5-U0-G4
		4M	29881	148	31126	154	31132	154		B4-U0-G5
		3M	29674	147	30910	153	30916	153		B4-U0-G4
		2M	31340	155	32646	162	32652	162		B4-U0-G4
35000L	5S	34451	147	35886	153	35893	153	235	B5-U0-G4	
	4M	33458	142	34852	148	34858	148		B4-U0-G5	
	3M	33668	143	35071	149	35078	149		B4-U0-G3	
	2M	35492	151	36971	157	36978	157		B4-U0-G4	
40000L	5S	38471	142	40074	148	40082	148	270	B5-U0-G4	
	4M	38050	141	39636	147	39643	147		B4-U0-G5	
	3M	37908	140	39488	146	39495	146		B4-U0-G3	
	2M	40351	149	42033	156	42041	156		B4-U0-G4	

• Some Photometric Data is extrapolated and subject to change.

VIENTO AREA LUMINARE

VNT

PHOTOMETRIC DATA

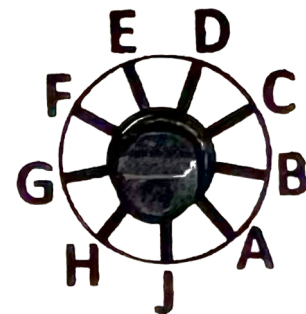
STANDARD

SIZE	MODEL	OPTICS	3000K		4000K		5000K		WATTAGE	BUG RATING
			LUMENS	EFFICACY	LUMENS	EFFICACY	LUMENS	EFFICACY		
VNTL LARGE	30000L	5S	30148	154	31404	160	31410	160	196	B5-U0-G4
		4M	29881	152	31126	159	31132	159		B4-U0-G5
		3M	29674	151	30910	158	30916	158		B4-U0-G4
		2M	31340	160	32646	167	32652	167		B4-U0-G4
	35000L	5S	34451	152	35886	159	35893	159	226	B5-U0-G4
		4M	33458	148	34852	154	34858	154		B4-U0-G5
		3M	33668	149	35071	155	35078	155		B4-U0-G3
		2M	35492	157	36971	164	36978	164		B4-U0-G4
	40000L	5S	39267	151	40903	158	40911	158	260	B5-U0-G5
		4M	38370	148	39969	154	39977	154		B4-U0-G5
		3M	38022	147	39606	153	39614	153		B5-U0-G4
		2M	40952	158	42658	164	42666	164		B5-U0-G4
	45000L	5S	44814	148	46681	154	46690	154	303	B5-U0-G5
		4M	43522	144	45335	150	45344	150		B4-U0-G5
		3M	43393	143	45201	149	45210	149		B5-U0-G4
		2M	46738	154	48685	161	48694	161		B5-U0-G4
	50000L	5S	49878	146	51956	152	51966	152	342	B5-U0-G5
		4M	48440	142	50458	148	50468	148		B4-U0-G5
		3M	48260	141	50271	147	50280	147		B5-U0-G5
		2M	51723	151	53878	158	53888	158		B5-U0-G5
	55000L	5S	53689	143	55926	149	55937	149	375	B5-U0-G5
		4M	52141	139	54314	145	54324	145		B4-U0-G5
		3M	51948	139	54112	144	54122	144		B5-U0-G5
		2M	54761	146	57043	152	57054	152		B5-U0-G5
	60000L	5S	57629	136	60030	142	60041	142	423	B5-U0-G5
		4M	56998	135	59373	140	59385	140		B4-U0-G5
		3M	56786	134	59152	140	59163	140		B5-U0-G5
		2M	60445	143	62964	149	62976	149		B5-U0-G5
	65000L	5S	62109	133	64697	139	64709	139	467	B5-U0-G5
		4M	61430	132	63989	137	64001	137		B4-U0-G5
		3M	61201	131	63751	137	63763	137		B5-U0-G5
		2M	65145	139	67859	145	67872	145		B5-U0-G5

• Some Photometric Data is extrapolated and subject to change.

SELECTABLE POWER (OPTION)

OPTION	SWITCH POSITION	OUTPUT PERCENTAGE	SWITCH POSITION	OUTPUT PERCENTAGE
SP	A	75%	F (DEFAULT)	100%
	B	65%	G	90%
	C	55%	H	85%
	D	50%	J	80%
	E	45%	Switch is located in driver compartment	



VIENTO AREA LUMINARE

VNT

DIMENSIONAL DATA

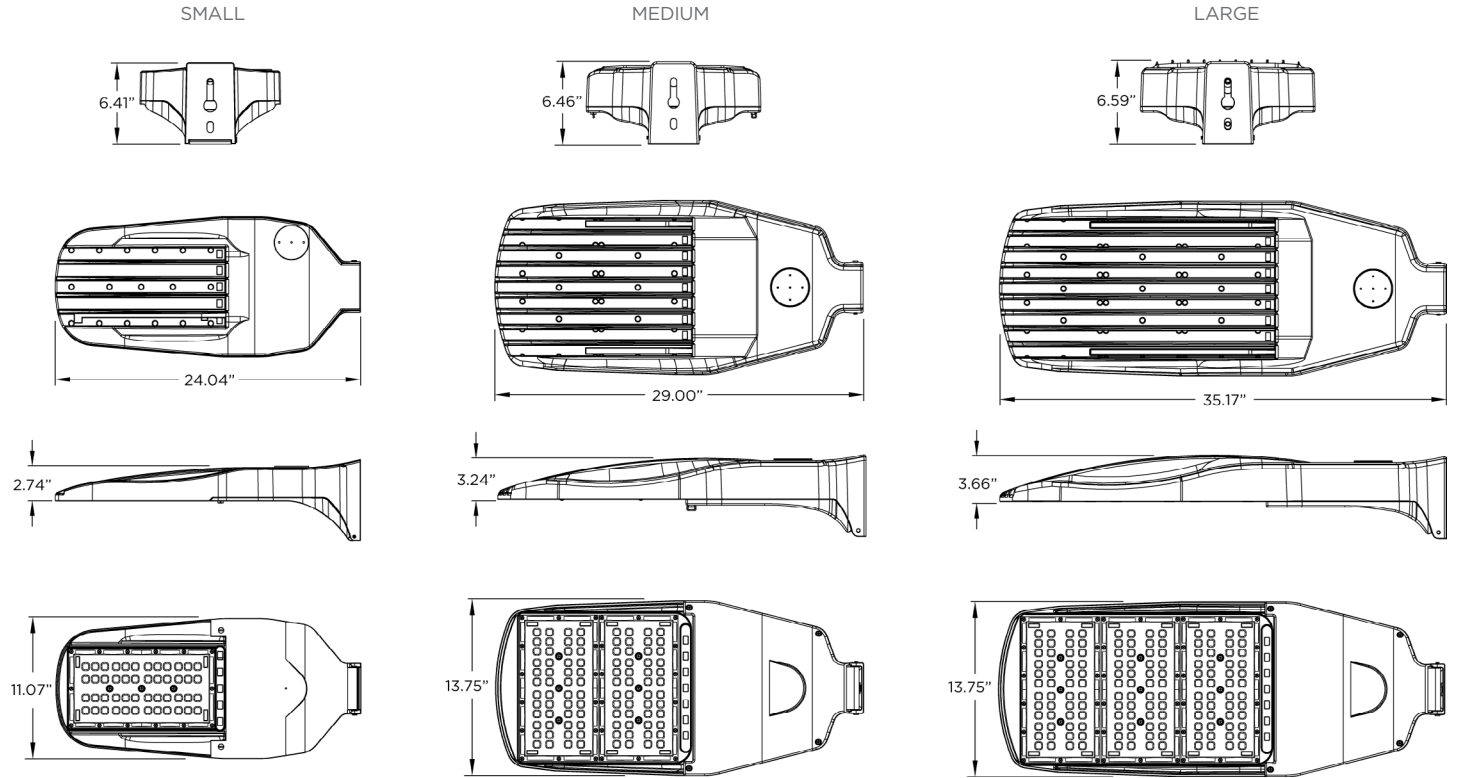
STANDARD SIZES

WEIGHT:

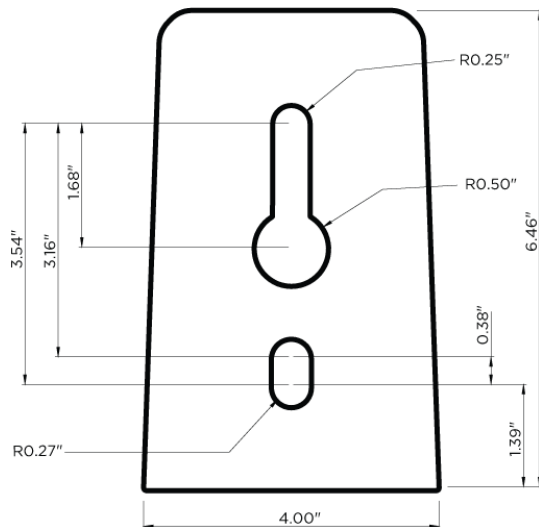
Small = 11 LB

Medium = 29 LB

Large = 39 LB



MOUNTING







- Dimensional Data shows the end, top, side, and bottom views for all standard sizes.
- All weights are rounded up to the nearest 0.5 lb.


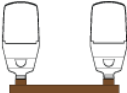
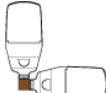

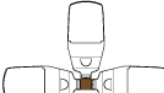

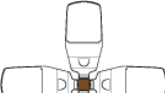
VIENTO AREA LUMINARE

VNT

ACCESSORIES (SOLD SEPARATELY)

<p>VNT-ASF <input type="text"/></p> <p>FINISH</p> <p>BZ Bronze WH White CC Custom Color</p>	<p>DESCRIPTION</p> <ul style="list-style-type: none"> Adjustable Slip Fitter Must select (ASF) in the order logic under the Options section. 180° range of motion in 10° increments. EPA: 0.127 sq. ft. - 6.0 LB Viento must not be tilted more than 20° when using ASF 	
<p>VNT-RPA <input type="text"/></p> <p>FINISH</p> <p>BZ Bronze WH White CC Custom Color</p>	<p>DESCRIPTION</p> <ul style="list-style-type: none"> Round Pole Adaptor Allows up to four Viento fixtures to be mounted to one pole. 3" to 5" Diameter EPA: 0.03 sq. ft. - 0.75 LB 	
<p>VNT-WB <input type="text"/></p> <p>FINISH</p> <p>BZ Bronze WH White CC Custom Color</p>	<p>DESCRIPTION</p> <ul style="list-style-type: none"> Wall Bracket 	
<p>VNT-TWB <input type="text"/></p> <p>FINISH</p> <p>BZ Bronze WH White CC Custom Color</p>	<p>DESCRIPTION</p> <ul style="list-style-type: none"> Tenon Wall Bracket Horizontal Mount 8" Square Plate - 2 3/8" OD Must be ordered with the Adjustable Slip Fitter (ASF) accessory. 	

EPA RATINGS

	SINGLE	DUAL SSA	TWO AT 90	TWO AT 180	THREE AT 90	THREE AT 120	FOUR AT 90
							
SMALL	0.74 sq. ft.	1.37 sq. ft.	1.13 sq. ft.	1.27 sq. ft.	1.27 sq. ft.	1.26 sq. ft.	1.27 sq. ft.
MEDIUM	1.04 sq. ft.	1.50 sq. ft.	1.63 sq. ft.	1.86 sq. ft.	1.87 sq. ft.	1.85 sq. ft.	1.87 sq. ft.
LARGE	1.27 sq. ft.	1.54 sq. ft.	2.02 sq. ft.	2.34 sq. ft.	2.35 sq. ft.	2.27 sq. ft.	2.35 sq. ft.

- EPA calculated with the following:
 - 4" square pole (Single, Two At 90, Two At 180, Three At 90, Four At 90)
 - 4" round pole (Three At 120)
 - VNT-SSA (Dual SSA)

VIENTO AREA LUMINARE

VNT

ACCESSORIES (SOLD SEPARATELY)

VNT-SSA

FINISH	
BZ	Bronze
WH	White
CC	Custom Color

DESCRIPTION

- Sholder-to-Sholder Adaptor
- EPA: 0.90 sq. ft. - 27 LB



VNT-TMA

POLE	FINISH	SIZE	MOUNTING
S Square	BZ Bronze	4 4"	01 1 Fixture
R Round	WH White	5 5"	28 2 Fixtures at 180°
		6 6"	29 2 Fixtures at 90°
			39 3 Fixtures at 90°
			32 3 Fixtures at 180°
			49 4 Fixtures at 90°

DESCRIPTION

- Tenon Mount Adaptor
- Dimensions (S): 4"/5"/6"
- Dimensions (R): 4"/5" DIA
- EPA: 0.4 sq. ft. 10 - 16 LB



VNT-UPM

POLE		FINISH	
SQ Square		BZ Bronze	
RD Round		WH White	

DESCRIPTION

- Universal Pole Mount Adaptor



DIMMING CONTROL

- MS5559** Scheduled Dimming, Standard Voltage
- MS5560** Scheduled Dimming, High Voltage
- MS5561** Constant All-Night Dimming, Standard Voltage
- MS5562** Constant All-Night Dimming, High Voltage

DESCRIPTION

- Dimming Control
- Standard Voltage: 105-305 VAC
- High Voltage: 312-530 VAC
- Frequency: 50/60 Hz

SHORTING CAP

- MS1827** Shorting Cap

DESCRIPTION

- Shorting Cap
- Shorting cap required if no other controls are being used in fixture receptacle.

PHOTOCELL STANDARD ON/OFF

- MS0192** 120/277
- MS5088** 480v

