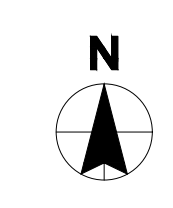


APPROVED:  
 YES  | NO



**42869 - 1057278 - FORT PIERCE, FL - NON PROTO**

MERCHANDISE GONDOLA SECTIONS	HEIGHT	QTY	MERCHANDISE EQUIPMENT	QTY	BACK OF HOUSE STORAGE	LF	OCCUPANCY	WALL TYPE LEGEND	SPECIFICS
T-UNIT	54"	24	VAULT DOORS	12	DRY SHELVING	39'	MERCHANDISE 1770 SF / 60 = 30 PEOPLE	EXTERIOR WALL	APPROVAL DATE: 4/13/2026
END CAP	54"	5	BEER CAVE DOORS	0	COOLER STORAGE	39'	QUEUING 48SF / 5 = 10 PEOPLE	NEW WALL FULL HEIGHT	7-11 DESIGN MANAGER: L. LONG
FritoLay END CAP	54"	1	LOW TEMP DOORS	1	FREEZER STORAGE	14'	SEATING ### SF / 15 = 0 PEOPLE	NEW WALL PARTIAL HEIGHT	BASE PROTOTYPE: NON PROTOTYPE
WINE FIXTURE	54"	3	SLURPEE	8 BARRELS	OVERHEAD STORAGE	15'	KITCHEN ### SF / 200 = 0 PEOPLE	NEW COOLER WALL	PROTOTYPE RELEASE - 2025-04 ISSUE DATE 12.19.2025
LOW WALL	36"	0	POST MIX	40 FLAVORS			SALES 278 SF / 60 = 5 PEOPLE	NEW COLUMN	SHELL CONSTRUCTION: EXISTING
HIGH WALL	72"	0	ROLLER GRILL	2 SELF SERVE			BACKROOM/UTILTY VAULT 777 SF / 300 = 3 PEOPLE		BUILDING SIZE: 3,548 SF
TOTAL SALES SECTIONS		33	SANDWICH CASE	9' LF			OFFICE 43 SF / 100 = 1 PEOPLE		GAS <input checked="" type="checkbox"/>   BEER <input checked="" type="checkbox"/>   WINE <input checked="" type="checkbox"/>   LIQUOR <input type="checkbox"/>
			BAKERY CASE	1 LARGE			RESTROOM 310 SF / 60 = 0 PEOPLE		
			NOVELTY CASE	1 LARGE			TOTAL 49 PEOPLE		
			ICE MERCHANDISER	INT: 1 / EXT: 0			OCCUPANCY LOAD (>49) = 49		
							TRAVEL DISTANCE (<200) = 66'		
							COMMON PATH OF TRAVEL (<75) = 51'		
							RESTROOMS REQUIRED = 2		
							EXITS REQUIRED = 2		

Rev. #	Date	Description

**7-ELEVEN, INC.**  
 3200 HACKBERRY ROAD, IRVING, TEXAS 75063  
**7-ELEVEN #42869 - 1057278**  
 1010 SEAWAY DR.  
 FORT PIERCE, FL



Project #: 2026216.47  
 Scale: 1/4" = 1'-0"  
 Date: 4/13/2026  
 Drawn By: MC  
 Checked By: MC

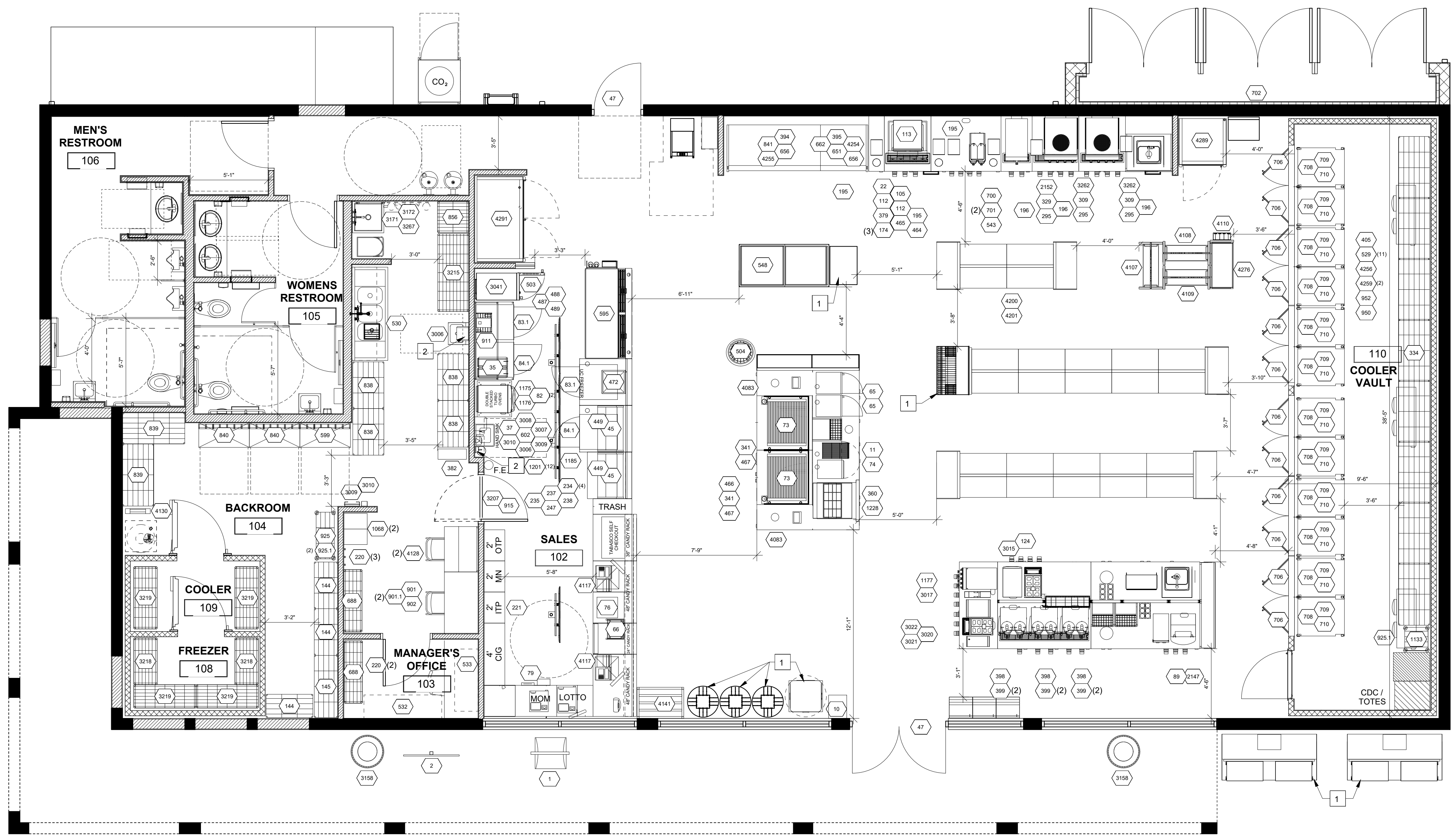
Documents prepared by A/E Firm are to be used only for the project for which they are prepared. Any extension of use to other projects, by owner or any other party, without the written consent of A/E Firm is done at the user's own risk. If used in a way other than that intended, A/E Firm assumes no liability for claims and losses.

3000 West County Road  
 Fort Pierce, FL 34949  
 Phone 888.522.2112

**Mark S. Salopek, LLC**

VERSION:  
**LAYOUT 1**

KEYNOTES	
1.	3RD PARTY VENDOR-SUPPLIED ITEM.
2.	HAND SOAP OR SANITIZER TO BE PROVIDED BY OWNER AND INSTALLED ON WALL BY HAND SINK.



1 FORT PIERCE, FL - EQUIPMENT FLOOR PLAN  
1/4" = 1'-0"

Rev. #	Date	Description

7-ELEVEN, INC.  
3200 HACKBERRY ROAD, IRVING, TEXAS 75063  
7-ELEVEN #42869 - 1057278  
1010 SEAWAY DR.  
FORT PIERCE, FL



Project #: 2026216.47  
Scale: 1/4" = 1'-0"  
Date: 4/13/2026  
Drawn By: MC  
Checked By: MC

Documents prepared by A/E Firm are to be used only for the project for which they are prepared. Any extension of use to other projects, by owner or any other party, without the written consent of A/E Firm is done at the user's own risk. If used in a way other than that intended, A/E Firm assumes no liability and holds A/E Firm harmless from all claims and losses.

3033 West County Road 2008  
Fort Pierce, FL 34947  
Phone 888.522.2112

Mark S. Salopek, LLC

EQUIPMENT REVIEW  
APPROVAL DATE: 4/13/2026  
7-11 DESIGN MANAGER: L. LONG

VERSION:  
EQ1.0

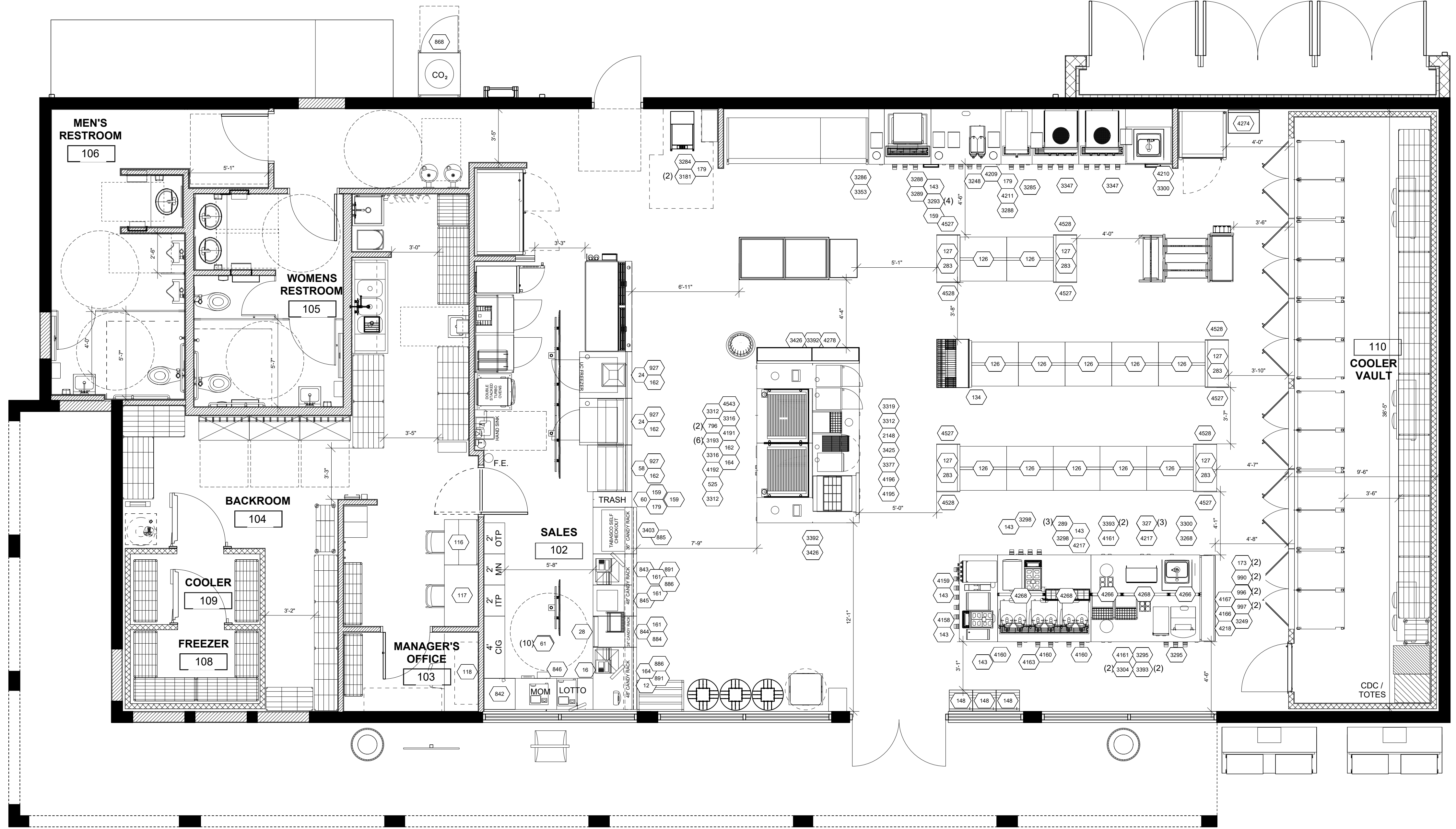
ITEM	QTY	ORACLE	SUPPLIER	PART NUMBER	WEIGHT	DESCRIPTION
1	1	03304401	Turnkey Resources	0		7-11 Windmaster Sign Consists of (1) 4205bkfp / 4200bkg And (2) 2844in
2	1	03304400	Turnkey Resources	0		7-11 Pole Sign Consisting Of (1) X-46180 And (2) 4155in
10	1	03240000	Plasticade	0		6 Count Red Shopping Baskets With Stand 17 Long X 12 Wide X 8.5 High (American Store Fixtures) - (Includes Two 7-Eleven Stickers For Each Basket)
11	1	00804910	Merchandising Systems Inc	NAC3T		3 Shelf Nacho Counter Rack
22	1	03299748	Mariani	MC16-3172		Mccann Water Booster
35	1	00032220	Star Manufacturing Int'L Inc	GR14		Gr14 Sandwich Press 120 Volt Unit Star
37	1	03291395	John Boos	PBHS-W01410-SS LR		Hand sink, SPLASH MOUNT: 4in ON-CENTER, Stainless Steel, Bowl Size 14inx10inx5in Drain size 1-7/8in splash side LH & RH
45	2	06170391	Sanden Vendo America Inc	HFDC		Combo Serve Case, Tempered Glass, 6 Prod Temp Zones, Programmable Temp Controller With Assoc Timers, Xenon Lighting, Wire Racks, 2 Swing Open Front Doors, 2 Sliding Rear Doors. 115/1/60 Elec
47	2	03266434	Home Depot Usa Inc	0		6" Front Stick Vinyl Decal - Single Item Per Order
65	2	00052320	Ettinger-Rosini & Assoc Inc	NE-17571		Panasonic Ne-17571 1700 Watt Microwave
66	1	03159318	Disply Source Alliance	107881BA DSCosmicStrandz		Multi Day Unit, Cosmic Strandz - (Bakery Rack/Banana rack) - overcounter display
73	2	03180540	Apw/Wyott Corp	HRS-75W-ST		Hot rod Roller Grill, 208/240v W/Truturn Coat 7/11 Replaces Item # 00010770; order with leg kit. Mount grill on 6" legs provided.
74	1	00044720	Star Manufacturing Int'L Inc	HPD2-120V		Chili Cheese Dispenser - 8mhp2d-120v Peristaltic Dispenser, Accy Kit 8mhp2-711-P-K
76	1	00750777	Take A Ticket Inc	ICM(I) 32		32 Game Lottery Ticket Unit
79	1	03114254	Tidel Engineering Lp	Series 4		Tidel Safe
82	2	03135810	Turnkey Resources	ENC-9600-600		Turbo Chef Bullet Oven, UL (KNLZ) ventless operation, EPA 202 test (8 hrs), internal catalytic filtration, stainless steel
83.1	2	03119473	Turbo Air Inc	MUF-28-N-1C-71 1S		Freezer, undercounter, R290, Work Top, One Section, 27" Wide, 7.0 Cubic Feet, ADA MODEL, 1" Casters with 1" drain pans, Sneezeguard, 1 yr warranty ENERGY STAR
84.1	2	03119472	Turbo Air Inc	MUR-28-N-1C-71 1S		Refrigerated, undercounter, R290, Work Top, Left Hinge, One Section, 27" Wide, 7.0 Cubic Feet, ADA MODEL, 1" Casters with 1" drain pans, Sneezeguard - all stainless, exterior, 1 yr warranty ENERGY STAR; fits under Metro workstation
89	1	03136112	Kan Pak Llc	CDG-211		Two Head Refrigerated Dispenser With Bulk Cream Graphics - Includes Standard 1 Year Parts And Labor Warranty for Bulk Cream Dispenser
105	1	04300414	Hoshizaki	FD-1002MRI-CB		Hoshizaki Ice Maker, BLACK PANEL, Cubelet-Style, Remote Air-Cooled, Remote Condenser, production capacity up to 821lb/24 Hours, R404-A refrigerant, 115V/60/1-ph, 15.7 Amps
112	2	03164150	Hoshizaki	R404-3546-2		Pre-charged 35' refrigerant line set for Hoshizaki Ice Maker - May need two
113	1	05990032	Cornelius	621058782		IDC Pro - 20 FTN Brands with 4 Flavor Shots, 7-Eleven USB unit comes w/ drip tray
124	1	07812000	Franke Coffee Systems	A800		Bean to Cup, coffee grounds ejector, cup sensor, gloss black
144	3	03265601	Intermetro Industries Corp	7114183		Single Vault Storage Shelving Unit, 18x36 - Supplier Prt# 7114183
145	1	03265602	Intermetro Industries Corp	7114184		Single Vault Storage Shelving Unit, 18x48 - Supplier Prt# 7114184
174	3	03299749	Mariani	AC974-00140-01		14 Line Bundle, 200'
195	3	03304868	Dispense Rite	MD# TLO-STNH-		Item # 95 Lid, Straw And Napkin Dispenser Mdf Tlo-Stnh
196	3	03304867	Dispense Rite	MD# TLO-DL-STNH		Item # 96 Dome, Straw And Napkin Dispenser Mdf Tlo-Dl-Stnh
220	5	03304849	Turnkey Resources	No vendor number		Bathroom Door Coat Hook By Asi 11 Gauge 304 S/S With Satin Finish Mdf#8425
221	1	03118158	Imageworks Display & Marketing Group Inc	711IM-10HP		10ft HP Impact Store Set - 7-Eleven
234	4	00804913	Merchandising Systems Inc	PTRST		Pizza Thawing Rack - 5 Tier - Chrome Plated Steel
235	1	03164205	Turnkey Resources	Hot Food Smallwares Kit		Hot Food Smallware Kit:(2 ea) Winco PPC-4 Pizza Cutter, (1 ea) Cambro 34CW135 1/3 Size Food Pan, (1 ea) Cambro 30CWGL135 Food Pan Cover with Gasket, (1 pr) Winco OMF-15 15in Oven
237	1	00804912	Merchandising Systems Inc	PPDR		Pizza Pan Drying Rack - 10 Spaces - Chrome Plated Steel Wire Gage 6
238	1	04410097	Turnkey Resources			Hot Foods Dipping Sauce Rack 22" X 6" X 4"(Heinz) - 1 Per Box
247	1	03299546	Turnkey Resources	Bake In Small Wares		Bake in Store Smallwares Kit
295	3	03262198	Fbd Partnership Lp	12-3003-0003		Refrigeration Lines Kit (Condenser To Dispenser), Remote Install, 50" Metal Flex
309	2	03129997	Fbd Partnership Lp	12-2567-0002		4 BRL Install Kit - Bulk System
329	1	03309718	Fbd Partnership Lp	12-2474-0073		FBD 561 beverage install kit for multi flavor machine bulk sys
334	1	03265621	Intermetro Industries Corp	711V8244		8 Unit Vault Shelving, 24x48 Shelves Consisting Of (3) 74pk3, 74" Metroseal Iii Post (3) 2448nk3, 24x48 Metroseal Iii Shf (2) 5f55n3k3, 3-Sided Dbl Slnkfrm 2448 In K3 For Model # 711V8244
341	2	03125978	Apw/Wyott Corp	21783950		Roller Grill Controller Cover for HRS-75 RG
360	1	03119409	Turbo Air Inc	MST-28-711S-AD A		Refrigerated Condiment Station, One Section, 27" Wide, 7.3 Cubic Feet, Sneezeguard, Ada Model - 1 Yr Warranty
379	1	05990020	Cornelius	629097436		IDC Pro Extended Splash Plate w/ ADA touchpads
382	1	03115271	Adco Industries/American Distributing Company	07011		Stowaway Cart, 22"D x 36"W x 37-1/4"H
394	1	03129750	Imagine Print Solutions Inc.	SV 6FT POP KIT		Sanden 6ft Deli Case Pop Kit. Includes: 1 Frame, 1 Insert 48x18, 1 Insert 22x18
395	1	03129753	Imagine Print Solutions Inc.	3FT POP SANDEN		Sanden 3ft Deli Case Pop Kit. Includes: 1 Frame, 2 Insert 35x18
398	3	03126320	Bunn O Matic Corporation	51200.011		Infusion Twin Soft Heat with Faucet Extension, Blk/SST (711) includes overlay and preloaded software
399	6	03126268	Bunn O Matic Corporation	27850.0200		Infusion Soft Heat Server

405	1	00010735	Adco Industries/American Distributing Company	NZ Cooler Cady - handle		Vault Dolly Handle - (Handle Only)
449	2	06170430	Sanden Vendo America Inc	1276786		POP Kit
464	1	03299780	Mariani	183-165-01		Water Regulator, 65 psi
465	1	04300399	Mariani	TCS261SN		Secondary Regulator, 1 product, 1 pressure
466	1	03180542	Apw/Wyott Corp	21858500		Bwd-75n, Bun Warmer, Dry, 208v 200w Replaces Item # 00010771
467	2	03180541	Apw/Wyott Corp	21794095		Kit, Divider Hrs-75 Wide Flat Replaces Item # 00010772
472	1	03121004	Wisco Industries Inc	00690-25-2-001-BLK		Wisco Unit - MODEL 690-25 w/2 DOOR W/25 IN BLACK CORNERS
487	1	04300844	Bixolon	XL5-40		Bixolon Printer with 7MD
488	1	04300843	Bixolon			Iconex Linerless labels
489	1	03291677	Metro			Metro Mounting Racks
503	1	00097816	Alto-Shaam	5028895		Equipment Stand w/ Casters
504	1	00804916	Merchandising Systems Inc	F3WB		3-Tier Mobile Wicker Basket Display, Single Sided, 4 Casters, 48"H X 21"W X 22"D
529	11	00032032	Turnkey Resources	NZ Cooler Caddy		Small - Vault Dolly Kit (Pkg Of 6) (No Handle) - Supplier Prt # - Nz Cooler Caddy
530	1	03291536	Intermetro Industries Corp	7115G56		72" Sink Wall System - Metroseal
532	1	03265637	Intermetro Industries Corp	711DW185		60" Shelf System (Inside Office - Side Desk Wall System)
533	1	03265638	Intermetro Industries Corp	711DW184		48" Shelf System - (Above Office Desk)
543	1	03126200	Bunn O Matic Corporation	49304.0001		ITBDD Sweetener Pump Kit
548	1	03119467	Turbo Air Inc	TFS-25F-N		Top Open Island Freezer - Novelty Case
595	1	04300316	Advanced Wire Products	RAK-0788-ASMB		Advanced Wire Products CORE In-Line Bakery Case, 71.25Lx36Dx58.5H
599	1	03299751	Mariani	11044		3x4/4 Vertical Rack, no pumps (Pumps supplied by FBD)
602	1	03136254	Turnkey Resources	B-1146		T&S Brass Faucet - Gooseneck Nozzle, Splash Mounted (Order With Hand Sink) (Lead Free)Supplier Prt # B-1146
651	1	06170382	Sanden Vendo America Inc	RSC3RA011		Type II Air Cooler 3' Display Case (Black/Black) (Center Only. No Side Panels)
656	2	06170308	Sanden Vendo America Inc	1225604		RSC, Refrigeration Line Set 50' (3/8" / 3/4")
662	1	06170366	Sanden Vendo America Inc	1222264		Kit, RSC Joining
688	2	03265616	Intermetro Industries Corp	711C4144		Shelving - Chrome 4 Tier Unit 48"W X 14"D X 74"H (For: Back Room When Applicable)
700	1	03126303	Bunn O Matic Corporation	52000.0002		Iced Tea/Coffee Brewer -Ib Ddil W/Sweetener
701	2	03126170	Bunn O Matic Corporation	39600.0059		Iced Tea/Coffee Dispenser with drip tray
702	1	03210048	Automated Logic Corp			3 Carrier RTU's (I/O Flex), Intelligen, Outside Lights
706	12	03175725	Anthony Door	i090 21ZN		Anthony Infinity 90 Vault Door, 30x79 to include shelving, lights and locks in Satin Silver
708	12	03124408	Bruegmann Usa Inc			Bruegmann Glide Kit (7) glide sets for Vault and Beer Cave 28.6Wx36D
709	12	03124407	Bruegmann Usa Inc			Bruegmann Glide Kit (1) glide sets for Vault and Beer Cave 28.6Wx36D
710	12	03175728	Anthony Door			Single Anthony Shelf 30"Wx36"D
838	4	03265691	Intermetro Industries Corp	Kit		Vault 24"x36" Shelving Unit 4 Tier - Metroseal
839	2	03265622	Intermetro Industries Corp	7114244		Vault 24"x48" Shelving Unit 4 Tier - Metroseal
840	2	03299750	Mariani	11042		3X4/4 Verticle Rack, 16 Flojet syrup pumps
841	1	06170372	Sanden Vendo America Inc	RSC6RA013		Remote Air-Cooled 6' Display Case Rsc Series (Black / Black), Low Deck, Led Lighting, 14 Adjustable Glass Shelves. W/ Top Valence Kit
856	1	03265694	Intermetro Industries Corp	711CS22		24"x24" Cleaning Supply Storage 5 Tiered 24 X 24 X 74 Shelving Unit - Finish/Metroseal Iii - Supplier Prt # 711cs22
901	1	03291075	Turnkey Resources	FB001649CI-CART		Pull Cart for folding bins
901.1	2	03291076	Turnkey Resources	FB001649CI-BINS		Folding Bin, box of 5
902	1	03291252	Turnkey Resources	FB0000001775		New Store Kit
911	1	03291576	Intermetro Industries Corp	711DCC5B		60" Metro Workstation - DCC Work Station Click and Collect - 30 x 60 x 74
915	1	03129503	Mueller Door Corporation	7-11-A1/2X3684-sgl		Apexx Series 1/2" T x 36"W x 84"H Single, Color: Dark Gray, No Seals, Integrated Jamb Guards, ADA G.F. Window Design, No Wear Plates, Zero Maintenance Hardware With a Lifetime Warranty
925	1	03291568	Intermetro Industries Corp	711RC143CB		Replenishing Cart ONLY (CHROME)- 14"x36"x60"H, Consists of: (4)1436NC, 14"x36" Chrome Wire Shelves, (4)54UJ, 54" Chrome Posts, (4)5M Casters (Quote J2687)- 711RC143CB- Packed in box W/Assembly Instructions. NOTE: This unit requires (2) MB302. Supplier part # 711RC143CB
925.1	3	03291572	Intermetro Industries Corp	MB3025086		Bins used with Replenishing Cart #925: 1 with 711RC1818KB and 2 with 711RC143CB) - (1 BOX of 6) -(Quote J2689) MB302508 / MB3025086. Supplier part # MB3025086. Cost is each box of 6
950	1	00130542	Heatcraft Worldwide Refrigeration	59316302		Hail Guard for Condensing Units #934, 935, 936, & 937
952	1	00130543	Heatcraft Worldwide Refrigeration	59320202		Hail Guard for Condensing Units #654, 655, 938, and 941
1068	2	03164177	Turnkey Resources			6-Tier Locker, Win-Holt Equipment Model WL-66/18, Assembled 12"Wx18"Dx78"H, Including 6" legs.
1133	1	03291567	Intermetro Industries Corp	711RC1818KB		Replenishing Cart ONLY (for the Vault) - 18"D x 18L" x 60"H - Consists of: (5)1818NK3, 18"x18" Metroseal Wire shelves, (4)54UPK3, 54" Metroseal Post, (4)5M Casters, (Quote J2688)
1175	1	03135813	Turbochef Technologies Inc	ENC-2027		Enc 2027 Narrow Stacking Stand (Used With Enc-3048)

1176	1	03135812	Turbochef Technologies Inc	ENC-3048		18" Cart And Clamps Kit For Double Stacking Ovens (2 Encores Or Bullets)
1177	1	06660123	Micro Matic Usa Inc	MMCT4TAP		Mmct4tap - 4 Tap Countertop Beverage System
1185	1	04300511	Turnkey Resources	TK38451		4 Screen Ceiling Mount Digital Menu Board Package, 2020 Program Without Media Engines Tk38451
1201	12	04410128	Turnkey Resources	711-CUTGUIDE		14" Cutting Guide With Raised Feet - Clear Coat Anodized
1228	1	03848886	Turbo Air Inc	CT28711		Condiment station divider template for turboair grill condiment unit.
2147	1	03126365	Bunn O Matic Corporation	38100.005		5- Head Powder Cappuccino Unit Imix5s+, Top Hinge, Ss & Blk, 120v
2152	1	03310811	Fbd Partnership Lp	771-621-7002		Frozen Uncarbonated Beverage, 7-Eleven, Lemon/Tea, SS, REMOTE, Video Door (Frozen Lemonade)
3006	2	03164426	San Jamar	T1100TBK		Manual Paper Tower Dispenser
3007	1	03267012	Gojo	000-949-475 FMK BLK		Soap Dispenser
3008	1	03267013	Gojo	00-949-475 NXT (2120-06)		Hand Sanitizer
3009	2	03307013	Marco	ABS-25318		3-Box Disposable Glove Rack
3010	2	03307014	Marco	ABS-25319		Hair Net Dispenser
3015	1	03129957	Follett LLC	15CI100A-IW-NF-ST-00		Countertop ice and water dispenser, NO FILTER
3017	1	03291361	Cal-mil	2051		Lid & Cup Dispenser
3020	1	07812012	Franke Coffee Systems	SU/UT12		Franke Milk Refrigerator
3021	1	07812006	Franke Coffee Systems	TDF56		Flavor Station
3022	1	07812011	Franke Coffee Systems	A1000		Coffee Maker
3041	1	00097801	Alto-Shaam	VMCH4HRH		Vector Series Multi-Cook Oven, RIGHT HINGE 208/240V/60/3phase, with cord and plug
3158	2	03175280	Wasau Made	MF3399		Exterior Trash Can, Black
3171	1	07883000	Ecolab	TO-10		New Ecolab Water Filter TO-10 System
3172	1	07883003	Ecolab	TO-10S		New Ecolab Water Filter TO-10S (scale) System
3207	1	03129515	Mueller Door Corporation	Apexx-Q		7" Galvanized Knock Down Frame, Jamb Face 2", Head Face 2", Galv A60, With Reinforcement For Hardware Mounting, For 36" Door.
3215	1	03291651	Intermetro Industries Corp	711625NK3		Vault 24" x 60" Shelving Unit, 6-Tier - Metroseal
3218	2	03291658	Intermetro Industries Corp	7116183NK3		Vault 18" x 36" Shelving Unit, 6-Tier - Metroseal
3219	4	03291659	Intermetro Industries Corp	7116184NK3		Vault 18" x 48" Shelving Unit, 6-Tier - Metroseal
3262	2	03310809	Fbd Partnership Lp	774-621-7003		Fbd 774 Rc, Video Door Included
3267	1	04300901	Ecolab	9221-3708		Split Twin Head Manifold
3268	1	03503265		6209250-004		Counter, ADA safe-style sink, 34H, cab-36x29, 32"W opening on front, 5.25H cover panel, sloped cover panel w/ access panel & base plate to cover plumbing, no top - offset fillers, stainless steel 24x36, sink- 19x18, touchless faucet model T&S EC-3103, on base; gunmetal gray / black
4083	2	04300605	Dispense Rite	CT-FULL-BS		4-1/2" L x 5" H x 6-1/2" W Built-In Napkin Dispenser
4107	1	04300822	Marketing Alliance Group	SE-281		MAG 3ft Endcap Wine 57"H Fixture w/Wine Cellar Sign 71"H - White/Red Side Graphic Panels
4108	1	04300823	Marketing Alliance Group	SE-282		MAG 3ft Endcap Wine 57"H Fixture w/Wine Cellar Sign 71"H - Red/Red Side Graphic Panels
4109	1	04300824	Marketing Alliance Group	SE-283		MAG 3ft Endcap Wine 57"H Fixture w/Wine Cellar Sign 71"H - White/White Side Graphic Panels
4110	1	04300825	Marketing Alliance Group	SE-284		MAG Wine Fixture Endcap/

APPROVED MILLWORK MANUFACTURERS*			
MANUFACTURER	CONTACT	PHONE	EMAIL
NELCO	KENNY JONES	502-939-6146	KENNY@NELCO.NET
ROYSTON	BETHANY JONES	770-735-3456 EXT. 3173	BETHANY.JONES@ROYSTONLLC.COM
SHOPCO	DAVID BIRD	214-551-0406	DBIRD@SHOPCOUSA.COM

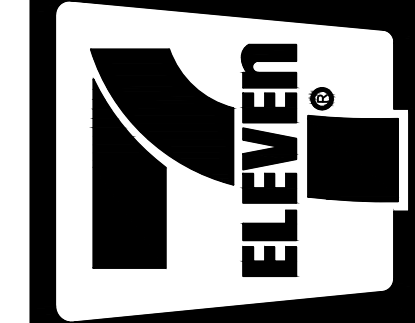
\* NOTE: APPROVED MILLWORK MANUFACTURER TO BE SELECTED BY THE 7-ELEVEN CONSTRUCTION MANAGER.



1 FORT PIERCE, FL - FIXTURE FLOOR PLAN  
1/4" = 1'-0"

Rev. #	Date	Description

7-ELEVEN, INC.  
3200 HACKBERRY ROAD, IRVING, TEXAS 75063  
7-ELEVEN #42869 - 1057278  
1010 SEAWAY DR.  
FORT PIERCE, FL



Project #: 2026216.47  
Scale: 1/4" = 1'-0"  
Date: 4/13/2026  
Drawn By: MC  
Checked By: MC

Documents prepared by A/E Firm are to be used only for the project for which they are prepared. Any extension of use to other projects, by owner or any other party, without the written consent of A/E Firm is done at the user's own risk. If used in a way other than that intended, A/E Firm assumes no liability for claims and losses.

3033 West County Road 2006  
Fort Pierce, FL 34947  
Phone 888.522.2112

Mark S. Salopek, LLC

FIXTURE REVIEW  
APPROVAL DATE: 4/13/2026  
7-11 DESIGN MANAGER: L. LONG

VERSION:  
EQ2.0

ITEM	QTY	ORACLE	SUPPLIER	PART NUMBER	WEIGHT	DESCRIPTION
12	1	03501602	Royston LLC	23012709-004		counter, sales, 34H, pos/storage 4', cab-24x23 no door, 2 adj shelves, pos shelf/24x23 no door, 2 adj shelves, top-flat laminate cosmic strandz 48x30 1hole, slatwall, legs; gunmetal gray SM4-1A (Pos/Stg)-ADA
16	1	03503670	Royston LLC	62087299-004		Counter, Cab-12Wx23Dx34H, Straight Front Waste with Flap, Flush Door, Closed Back, Legs, Waste Container, 12Wx24D Flat Laminate Top - Cosmic Strandz, Cabinet Connector - Gunmetal Gray (SM12W)
24	2	03501886	Royston LLC	62031605-004		Counter for Self-Serve Sanden and FEW Hot Hold
28	1	03501609	Royston LLC	60001191-004		pos cigarette under counter roll out, (24") (Royston) UCCM; gunmetal gray
58	1	03501671	Royston LLC	62031604-004		counter, 34H, 34D, hot hold, cab-36x29 no door, w/inserts, pull-out SS shelf, top-flat SS 36x36 no hole, 6.8 rear overhang, legs; gunmetal gray FF3-HLD-29-36-36FST-POSH-SS-33.5-UPR-INSR-L-CBC
60	1	03501648	Royston LLC	23003456-004		counter, 34H, 30D, trash, straight front, cab-12x29 doors, double sided, full flaps, waste containers, top-flat stainless steel 12x30 no hole, legs; gunmetal gray FFTM1-30D-DB-ADA
61	10	00036520	Royston LLC	192784		Parts, Grommet, Black Plastic
116	1	03501658	Royston LLC	60020603-004		misc, desk, 38H, cab-34W x 23.5D, computer shelf 34W x 15D, pull-out keyboard tray 24W x 26D, top-flat powder coated metal 34x26, no hole; gunmetal gray
117	1	03501659	Royston LLC	60019653-004		misc, desk, 31H, cab-48W x 23.5D, 2 drawers, top-flat powder coated metal 48x26, no holes; gunmetal gray
118	1	03501660	Royston LLC	60019654-004		misc, desk, 32H, cab-60W x 23.5D, (1) drawer 23Wx33D, top-flat powder coated metal 60x26, no hole; gunmetal gray
126	12	03501650	Royston LLC	10003115-004		shelving, T-unit, 54H, 36W x 34D, wire grid, 16" base shelf, 2" uprights; gunmetal gray
127	5	03501652	Royston LLC	70010474-004		shelving, L-unit, 54H, end cap, 36W x 18D, solid panel, 16" base shelf, 2" uprights; gunmetal gray
134	1	03503758	Royston LLC	10006414-004		54H, end screen, 36W x 2D, solid panel, no base shelf, 2" uprights, gunmetal gray
143	6	03502104	Royston LLC	62020938-004		Lid Holder, 1-Lid; HLDR,LID,FLR,06.00X04.08,1LID,7-11
148	3	03501657	Royston LLC	60004634-004		shelving, slant back, feature item display (FID), 54H, 18W x 17D, (4) shelves, casters; gunmetal gray
159	3	03501625	Royston LLC	23015718-028		kickplate, 29" side kick plate for 12" wide counter (actual width 23") black
161	3	03400314	Royston LLC	23015514-028		kickplate, 24" front, 24x5.75; black
162	4	03400195	Royston LLC	23015355-028		kickplate, 36" front kick plate, black
164	2	03501623	Royston LLC	23015356-028		kickplate, 48" front kick plate; black
173	2	03400196	Royston LLC	23015357-028		kickplate, 29" side, 29x5.75, black
179	3	03501624	Royston LLC	23015641-028		kickplate, 12" front kick plate; black
283	5	03501656	Royston LLC	70018256-004		shelving, connector, T to L, 2" tube; gunmetal gray
289	3	03502007	Royston LLC	72000449-004		lid & condiment shelf, 36W
327	3	03502106	Royston LLC	10003299-004		shelving, shelf, 24W x 12D, flat metal
525	1	03501588	Royston LLC	62012479-SS		MISC, single tong holder, RH includes (1) extra tumbler (for use with sneeze guards made with square tube) PKG,HLDR,TNG,04.72X05.95,SS,1"SQ-TBG,SG,(2)TLBRS,RH,7E
796	2	03501832	Royston LLC	23015935-028		kickplate, 18" front kick plate, black
842	1	03501666	Royston LLC	23012865-004		counter, sales, 34H, storage, cab-24x23 no door, 2 adj shelves, top-flat laminate cosmic strandz 24x24 no hole, legs; gunmetal gray SM2-24D-ADA
843	1	03501610	Royston LLC	23012847-004		counter, sales, 34H, pos, cab-24x23 no door, 1 adj shelves, pos shelf, top-flat laminate cosmic strandz 24x30 1-hole, slatwall, legs; gunmetal gray SM2-7 (SGL POS)-ADA
844	1	03501608	Royston LLC	23012860-004		counter, sales, 34H, storage, cab-24x23 no door, 2 adj shelves, top-flat laminate cosmic strandz 24x30 no hole, slatwall, legs; gunmetal gray SM2-8-2SGL-STG-ADA
845	1	03501607	Royston LLC	60056481-004		counter, sales, 34H, lotto, cab-24x23 no door, top-flat laminate cosmic strandz 24x30 18 3/4" x 18 3/4" cut out, slatwall, legs; gunmetal gray SM2-LTTO-ADA
846	1	03501604	Royston LLC	60056522-004		Counter, Sales, 34H, Storage/Safe 4', Cab-18x23 No Door, 2 Adj Shelves/30" Safe Back, Top-Flat Lam Cosmic Strandz 48x24 No Hole, Legs; Gunmetal Gray SM4-30t-24d-Ada
868	1	03500189	Royston LLC	60075609-086		misc, 76H, enclosure, 32.5x32.5, locking door, louvered panels, grey
884	1	03501836	Royston LLC	60087089-004		2' Front Counter Candy Shelves Kit
885	1	03501838	Royston LLC	60087091-004		3' Front Counter Candy Shelves Kit
886	2	03501840	Royston LLC	60887093-004		30" side panel set (set of 2) Includes 2ea 30.5"t x 8" d x 3/4" thick Laminated wood side panels. Also includes a metal kick plate at the bottom of each panel. Packaged in pairs and orange label identifying part number.
891	2	03501839	Royston LLC	60087092-004		4' Front Counter Candy Shelves Kit
927	3	03501672	Royston LLC	72003485-004		shelving, kit, 36W, includes (1) 26Hx36W open frame, (3) 5.5Dx36W wire shelves; gunmetal gray (used for chips on Hot Hold Cabinet with 6.89" overhang)
990	2	03400547	Royston LLC	23015652-028		Parts, Kickplate, Front, 72W - Iron Kettle Black
996	2	03502834	Royston LLC	23016077-028		Parts, Kickplate, Corner Filler, 4Wx4Dx5.88H - Iron Kettle Black
997	2	03503092	Royston LLC	23015940-028		Parts, Kickplate, Front, 60W - Iron Kettle Black
3181	2	03503435	Royston LLC	23015719-028		23" Side Kick Plate for 12" Wide Counter (actual width 17")
3193	6	03503286	Royston LLC	25000635-028		Base Ends, 35"
3248	1	03503801	Royston LLC	62033248-028		Parts, Kickplate, Front, 54W - Iron Kettle Black PKG,SKT,FRT,05.75X54.00X04.00,WRAP,7-11
3249	1	03503870	Royston LLC	60124385-028		Parts, Kickplate, Front, 66W - Iron Kettle Black PKG,SKT,FRT,05.88X66.00X04.00,WRAP
3284	1	03504014	Royston LLC	62163815-004		Counter, Cab-12Wx23Dx34H, Straight Front Waste with Flap, Flush Door, Closed Back, Waste Container, Legs, 12Wx24D Solid Surface - Bellavati 'Anchorage' DFS1-309 - Gunmetal Gray (FFTM12) CS12-23-34-SW-LFD-CB-L-SMF1224-XFYF-7E
3285	1	03504017	Royston LLC	62163864-004		Counter, Cab-24Wx35Dx34H, Beverage, Slurpee, Flush Doors, Open Back, 2-22" Cup Dispensers w/Black Collars, 11.5H Wrapper, 3" Painted Step Shelf, No Cup Cover, Top Support over Cups, Caster Base - Toe Space Front Only, 24Wx42D Solid Surface Top with notch in back - Bellavati 'Anchorage', 33" Top Mount Wire Drain pan with Sprayer/Overflow, Top supports, SLRP - Gunmetal Gray (BB24) CB24-35-32-34-FD2-OB,2C-GN-WOC-11.5,B-CSTR5-T1,SMFN2442-DPN-OSP-SLRP-7E
3286	1	03504015	Royston LLC	62163853-004		Counter, Cab-12Wx29Dx34H, Drop waste without Chute, Flush Door, Closed Back, Legs, 12Wx42D Solid Surface - Bellavati 'Anchorage' DFS1-309, Top supports - Gunmetal Gray (FFTM12) CS12-29-34-DW-LFD-CB-NCHT-L-SMF1242-XFYF-FSPT-7E
3288	2	03504020	Royston LLC	60026145-004		Counter, Cab-12Wx29Dx34H, Drop Waste, Flush Door, Closed Back, No Chute, Legs, No Top - Gunmetal Gray (FFTM12) CS12-29-34-DW-LFD-CB-NCHT-21H-CTNR-L-NOT-7E
3289	1	03504021	Royston LLC	62163866-004		Counter, Cab-36Wx35Dx34H, Beverage, Cornelius, Flush Doors, Open Back, 4-22" Cup Dispensers w/Black Collars, 11.5H Wrapper, 3" Painted Step Shelf, No Cup Cover, Top Support over Cups, Caster Base w/Front Toe Space, 36Wx42D Solid Surface Top with notch in back Top w/Special Cutouts, 33" Top Mount Wire Drain pan - Bellavati 'Anchorage', CNLS - Gunmetal Gray (BB36-CNLS) CB-36-35-32-34-FD2-OB,4C-GN-WOC-11.5W,B-CSTR5-T1,SMF3642-CNLS-DPN-OSP-7E
3293	4	03504024	Royston LLC	22000038-004		Misc, Top Support, 9.39H x 12.44W, for back of cabinet w/ 12.5" rear top overhang - Gunmetal Gray FLR,SPRT,TOP,09.00X12.44,OHTP
3295	1	03504062	Royston LLC	62175838-004		Counter, Cab-30Wx29Dx34H, Beverage, Flush Door, Open Back, 4-22" Cup Dispensers w/Black Collars, 3" Painted Metal Step Shelf, No Cup Cover, 11.5H Wrapper, Legs, No Top - Gunmetal Gray CB30-29-26-34-LFD-OB-4C-GN-WOC-11.5-L-NOT-7E
3298	2	03504064	Royston LLC	62098787-004		Counter, Cab-24Wx29Dx34H, Beverage, Flush Door, Open Back, 3-22" Cup Dispensers w/Black Collars, 3" Painted Step Shelf, No Cup Cover, 11.5H Wrapper, Legs, No Top - Gunmetal Gray CB24-29-26-34-LFD-OB-3C-GN-WOC-11.5-L-NOT-7E
3300	2	03504065	Royston LLC	62034193-004		Misc, Splash Guard, 24Wx24Dx16H in rear, 12H on sides, Painted Metal without Holes (Use On Stone or Solid Surface Tops) - Gunmetal Gray GRD,SP,12.00X16X23.88X23.74,MIT,2,HEM,W/O HLS,GNEL (24")
3304	2	03504068	Royston LLC	72043276-004		Misc, 3-tier Countertop Condiment Rack, 18Wx17.8Dx20H, Radius Cutout Side Panels, Open Frame with Back panel, 3-8" Wire Shelves, 3-Acrylic Bins with Adj Dividers - Gunmetal Gray PKG,RACK,LID,TIER-3,18X20X17.8,RAD,CUTOUT,ADJ
3312	3	03504074	Royston LLC	62175871-004		Counter, Cab-18Wx35Dx34H, Drop waste, Flush Door, Closed Back, No Chute, Legs, No Top - Gunmetal Gray (FFTM18) CS18-35-34-DW-LFD-CB-NCHT-L-NOT-7E
3316	2	03504077	Royston LLC	62146174-060		Sneeze Guard, Single Fixed Sneeze Guard; 41.5Wx37.71Dx26H, Glass, Low Profile Angled Side Glass 8.375" off counter top for USA, Flip-up Front Lexan, Partial Stainless Steel panels in back, Square Posts, Painted Top Channel, LED light kit, - Silver Cloud (used with 1-75RG Self Serve Roller Grill with 6H legs on 42W RG cabt on casters) PKG,SZGD,41.5X37.7X26,LEXF,SDOF,FXDSSBP,17.65DE-GL,LCUT,7E
3319	1	03504080	Royston LLC	62169261-004		Counter, Cab-36Wx35Dx34H, Storage, Flush Doors, Open Back, 1 Adj Shelf, Legs, No Top - Gunmetal Gray (FF36) CS36-35-34-FD2-OB-1AS-L-NOT-7E
3347	2	03504016	Royston LLC	62163865-004		Counter, Cab-36Wx35Dx34H, Beverage, Slurpee Flush Doors, Open Back, 4-22" Cup Dispensers w/Black Collars, 11.5H Wrapper, 3" Painted Step Shelf, No Cup Cover, Top Support over Cups, Caster Base - Toe Space Front Only, 36Wx42D Solid Surface Top with notch in back - Bellavati 'Anchorage', 33" Top Mount Wire Drain pan with Sprayer/Overflow, Top supports, SLRP - Gunmetal Gray (BB36) CB36353234FD2-OB,4CGN-WOC11.5,CSTR5T1,SMFN3642DPN-OSP,SLRP7E
3353	1	03502718	Royston LLC	23001830-004		Counter, End Filler, 12.5Wx34H, with base - Gunmetal Gray CSEF12.50-34-B
3377	1	03504105	Royston LLC	62098715-004		Counter, Cab-30Wx23Dx34H, Storage, Flush Door, Open Back, 1 Adj Shelf, Legs, No Top - Gunmetal Gray (FF30) CS30-23-34-LFD-OB-1AS-L-NOT-7E
3392	2	03504111	Royston LLC	62176206-004		Counter, Island End Filler, 8.0Wx34H, with base - Gunmetal Gray
3393	4	03504126	Royston LLC	10027874-004		Parts, coffee, syrup holder, 4"X12", 3 Tiers, for use with condiment display, - Gunmetal Gray
3403	1	03504136	Royston LLC	62156699-004		Counter, Cab-36Wx23Dx34H, Storage, No Door, Closed Back, 2 Adj Shelves, Legs, Laminated Flat Top - Cosmic Strandz - Gunmetal Gray (SM36)
3425	1	03504143	Royston LLC	62185358-004		Counter, Cab-30Wx03.5Dx34H, Back Filler, Closed Back, Base, No Toe Space, No Top - Gunmetal Gray CS-WRAP-BACK-FLR-30.00-03.50-34-B-FB,WO-KO,7E
3426	2	03504146	Royston LLC	62183619-004		Counter, End Filler, 8Wx34H, with base - Gunmetal Gray CSEF08.00-34-B
4158	1	03430421	Royston LLC	62199325-004		Counter, Cab-30Wx29Dx34H, Beverage, Flush Door, Open Back, Lid Holder LH, 3-22" Cup Dispensers w/Black Collars, 3" Painted Step Shelf, No Cup Cover, 11.5H Wrapper, Napkin Dispenser on Left Side of Cabinet, Legs, No Top - Gunmetal Gray CB30-29-26-34-LFD-OB-1ULD-3C-GN-WOC-11.5W-LH-LNPK-L-NOT-7E
4159	1	03430406	Royston LLC	62199326-004		Counter, Cab-36Wx29Dx34H, Beverage, Flush Doors, Open Back, 4-22" Cup Dispensers w/Black Collars, Lid Holder RH, 3" Painted Step Shelf, No Cup Cover, 11.5H Wrapper, Napkin Dispenser on Right Side of Cabinet, Legs, No Top - Gunmetal Gray CB36-29-26-34-FD2-OB-4C-1ULD-GN-WOC-11.5W-RH-RNPK-L-NOT-7E
4160	3	03430407	Royston LLC	62199328-004		Counter, Cab-24Wx29Dx34H, Beverage, Flush Door, Open Back, Drain Pan Cutout Left/Right, 2-22" Cup Dispensers w/Black Collars, 3" Painted Step Shelf, No Cup Cover, 11.5H Wrapper, Legs, No Top - Gunmetal Gray CB24-29-26-34-LFD-OB-DPAN-LR-2C-GN-WOC-11.5W-SPRT-L-NOT-7E
4161	2	03430408	Royston LLC	62166650-004		Counter, Cab-24Wx29Dx34H, Brewer/Waste, (2) Flush Louvered Doors with attached Kickplates, Butt hinge, Open Back, Dolly with Waste Container, Safe Style Base - Gunmetal Gray CS24-29-34-SF-FD2-BHNG-OB-RWST-LVR1-B-NOT-HDTY-7E
4163	1	03430410	Royston LLC	62188568-1		Parts, Drain Pan, 69Wx7D, Top Mounted, Cold, Wire Grid, Stainless Steel PKG,DPAN,TMT,CLD,WIRE,69.00X07.02,1X1.25NPL,SS,7E
4166	1	03430411	Royston LLC	62199331-004		Shelving, End Merchandising Panels, 10Dx24.84H, includes LH and RH Radius Side Panels with Hardware, Custom for Coffee Island Merchandising - Gunmetal Gray PKG-7E-PNL-SDE-MDSR-END-CNDY-WHDW-10.00X24.84-SPRT2-LR-COF
4167	1	03430412	Royston LLC	62199332-004028		Shelving, Front Merchandising Kit 66W, 66Wx11.75D Add-On Base with Toe Space Front, Left and Right, (3) 36Wx10D Flat Metal 3 Position Shelves, (3) 30Wx10D Flat Metal 3 Position Shelves, (1) 36W Slatwall Frame with Solid Back, (1) 30W Slatwall Frame with Solid Back, Top Supports - Gunmetal Gray PKG,7E,MDSR,END,COF,66",26H,SW,TPSP,3-10X36/30MSHF-AOB-T6
4191	1	03430389	Royston LLC	62193095-004		Counter, Cab-42Wx41Dx28H, Bunwarmer, No Door, Front Panel with cutout for Bunwarmer, 20.5"D Heavy Duty Bun Warmer Shelf, Sloped Shelf w/3"H lip for Hot Dog Boats, Full Ht Divider Panel, Metal Flush Front, Open Back, 0.75" Wrapper Filler Left Hand, Leveling Caster Base with 1 Set of POSI-SET floor guides included, 42.78Wx43.5D Solid Surface Top (Bellavati 'Anchorage') with Back and Left Side Splash, 1 Penetration and Sneeze Guard Holes - Gunmetal Gray CS42-41-28-BWMR-OB-HDBT-TLT-BTMF-OB-0.75LF-DIVR-BWD75N-CSTR-SMBP42.787-43.5-WL-7E
4192	1	03430390	Royston LLC	62193097-004		Counter, Cab-42Wx41Dx28H, Napkin/Taquito/Waste, Flush Doors, Drawer w/Napkin, (3) Taquito "T" Slots, Waste, Open Back, 0 Adj Shelf, 0.75" Wrapper Filler Right Hand, Leveling Caster Base with 1 Set of POSI-SET floor guides included, 42.78Wx43.5D Solid Surface Top (Bellavati 'Anchorage') with Back and Right Side Splash, 1 Penetration and Sneeze Guard Holes - Gunmetal Gray
4195	1	03430394	Royston LLC	62193122-004		Counter, Cab-32Wx35Dx34H, Safe, Flush Doors with Butt Hinges, Louvers and attached Kickplates; Open Back, Base with Toe Space Front only, 6.5Wx22H Cutouts in LH and RH End Panels, 6.0W Wrapper Filler Left with Louvers, No Top, Stainless Steel Arch for Turbo - Gunmetal Gray CS32-35-34-SF-FD2-BHNG-LVR14-OB-TURB-B-T1-SF32-2.8-NOT-6.0LF-7E
4196	1	03430395	Royston LLC	62193126-ANCO04		Top Kit, Solid Surface; Bellavati 'Anchorage' DFS1-309 - 9350 LH RTR - Roller Grill (9064131) ISHT,7E,ISLD,RG,10'3X6'6,SMF,L,9350,LH,CST
4209	1	03504181	Royston LLC	62128610-004		Counter, Cab-30Wx35Dx24H, Beverage, Flush Door, Open Back, 4-22" Cup Dispensers w/Black Collars, 11.5H Wrapper, 3" Painted Step Shelf, No Cup Cover, Legs, No Top - Gunmetal Gray CB30-35-32-34-LFD-OB-4C-GN-WOC-11.5W-L-NOT-7E
4210	1	3504180	Royston LLC	62200556-004		Counter, Cab-36Wx29Dx34H, ADA Sink, Open Back, 32" Wide Opening on Front with 5.25H Knee Panel, Elkay Drop-In Sink PSR19181 (19x18) with T&S Brass EC-3102 Electronic No Touch Faucet, Base, 36Wx42D Solid Surface Top - Bellavati 'Anchorage', 12x16x24 Painted Splash Guard - Gunmetal Gray CS36-29-34-SF-OB-32X27X7-OPG-KNPN-SK1918-EFCT3102-16HS G-B-T1-SMFS3642-7E
4211	1	03504198	Royston LLC	62200819-ANCH		Top, 54.12X42D Flat - Solid Surface with (2) Drop Wastes LH/RH (8" Off Front Edge and 1 Obround Penetration - Bellavati 'Anchorage' SMF,54.12X42.00,XFYF,2DW65M-6OLEER,10B-27
4217	2	03504196	Royston LLC	62093046-004		Counter, Cab-24Wx29Dx34H, Storage, Flush Door, Open Back, 1 Adj Shelf, Legs, No Top - Gunmetal Gray CS-24-29-34-LFD-OB-1AS-L-NOT-7E
4218	1	03504205	Royston LLC	62206076-ANCO04		TOP KIT, SOLID SURFACE; BELLAVATI 'ANCHORAGE' DFS1-309-9350 LTC/RTR/CST LH, 16'5.5" X 5'-7" COFFEE ISLAND ADACOK,7E,TOP,ISLD,COFF,16'5.5X5'7,ANCH,SK-ADA,WOCPN,V2,9350-LTC-RTR-CST-LH
4219	1	03504197	Royston LLC	62169966-004		Counter, Cab-30Wx29Dx34H, Storage, Flush Door, Open Back, 1 Adj Shelf, Legs, No Top - Gunmetal Gray CS-30-29-34-LFD-OB-1AS-L-NOT-7E
4266	2	03504231	Royston LLC	72052197-004		Shelving, End Screen, 24Wx2Dx54H Solid Metal Front, Solid Metal Back - Gunmetal Gray ESCN,DBL,BSE,INSE,M/M,24X54,WALL
4268	3	03504233	Royston LLC	72052189-004		Shelving, End Screen, 36Wx2Dx54H Solid Metal Front, Solid Metal Back - Gunmetal Gray ESCN,DBL,BSE,INSE,M/M,36X54,WALL
4274	1	03504239	Royston LLC	10034551-004		Shelving, L-Unit, 24Wx18Dx54H/60H, Solid Metal Back, 5 - 24Wx16D Flat Metal Shelves, 2 Wall Brackets - Gunmetal Gray COX,7-ELEVEN,BUZZ,BALL
4278	1	03504246	Royston LLC	62214168-004		Shelving Front Merchandising Kit
4527	5	03503756	Royston LLC	10021730-004		54H, power wing, LH, 18D, for end cap (left-hand side, facing the unit) PWR-WNG
4528	5	03503757	Royston LLC	10021729-004		54H, power wing, RH, 18D, for end cap (right-hand side, facing the unit) PWR-WNG