



THE SUNRISE CITY

FORT PIERCE

Florida

**DISPOSITION OF SURPLUS PROPERTY
1620 AVENUE E**

EVALUATION CRITERIA



Development Plan
(20 points)



Timeline
(20 points)



Construction Cost Estimates
(10 points)



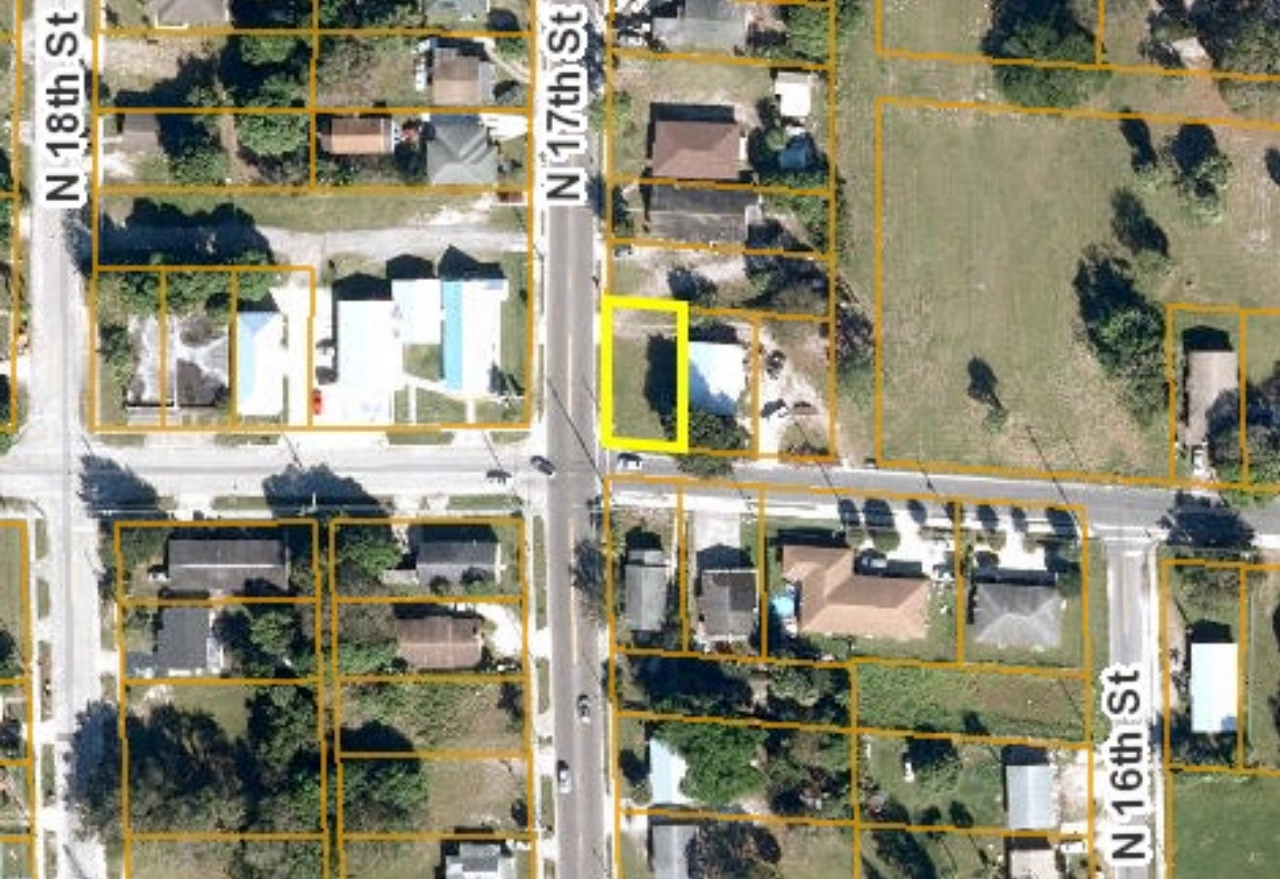
Proof of Financial Ability
(15 points)



Property Utilization
(20 points)



Summary of Development
(15 points)



1620 AVENUE E

EVALUATION RESULTS

RESPONDENTS	EVALUATOR #1	EVALUATOR #2	EVALUATOR #3	EVALUATOR #4	TOTAL
Sunrise City Concrete Services, Inc	95	82	72.5	95	344.5
Journey Equity Partners, LLC	85	84	65	77	311

SUNRISE CITY CONCRETE SERVICES INC.



FRONT ELEVATION
C/SME - NYC



Purchase Price
\$3K



Single Family
Home
3BR/2BATH



Construction
Cost Estimates
\$185K



Complete
Construction
within 7
months of
closing

RECOMMENDATION



- In accordance with the Fort Pierce Code of Ordinances, Section 101-23 (4), staff recommends the Planning Board review the request and forward a recommendation to the City Commission for approval of the sale of real property located at 1620 Avenue E to Sunrise City Concrete Services Inc.



QUESTIONS