



APN 501-60-041  
WEST 303 PHASE I LLC  
DEED 200679867 M.C.R.  
BK. 1538, PG. 25 M.C.R.

APN 501-60-042  
WEST 303 ACQUISITION PARTNERS LLC  
DEED 200679867 M.C.R.  
BK. 1538, PG. 25 M.C.R.

NORTH LINE OF THE SOUTHWEST QUARTER OF SECTION 7  
S89°35'04"E 2567.28' (C) N89°46'45"W 2567.28' (R)

SOUTH LINE OF THE NORTH HALF OF THE SOUTHWEST QUARTER OF SECTION 7  
N89°44'56"W 2571.01'

APN 501-60-011D  
WEILER FAMILY TRUST  
DEED 190258680 M.C.R.

33.00' COUNTY ROADMAP PER  
BK. 6, PG. 9 ROADMAP  
BK. 72 MISC., PG. 507  
BK. 509 DEEDS, PG. 494  
BK. 519 DEEDS, PG. 541

APN 501-60-006C  
EK COOLING LLC  
6513 N ALSUP ROAD  
DEED 020676577 M.C.R.

33.00' COUNTY ROADMAP PER  
BK. 6, PG. 9 ROADMAP  
BK. 72 MISC., PG. 507  
BK. 509 DEEDS, PG. 494  
BK. 519 DEEDS, PG. 541

APN 501-60-005  
ADAMAN IRR WATER  
DISTRICT #36  
DEED 890264259 M.C.R.  
"NOT A PART"

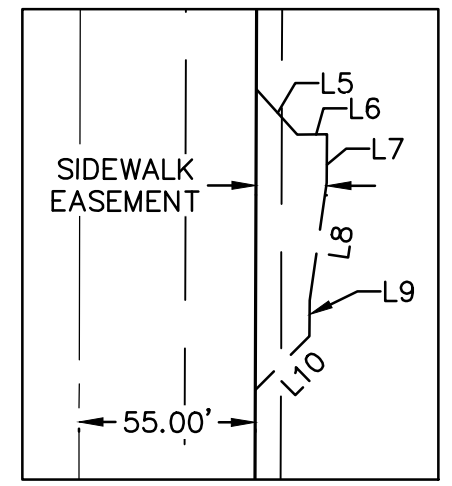
FOUND IRON PIN  
FLUSH  
WEST 1/4 CORNER  
SEC. 7, T.2N., R.1W.  
FOUND ALUMINUM CAP  
FLUSH STAMP ILLEGIBLE

33.00' COUNTY ROADWAY PER  
BK. 4, PG. 44 ROADMAP  
BK. 6, PG. 27 ROADMAP  
BK. 85 OF MISC, PG 323

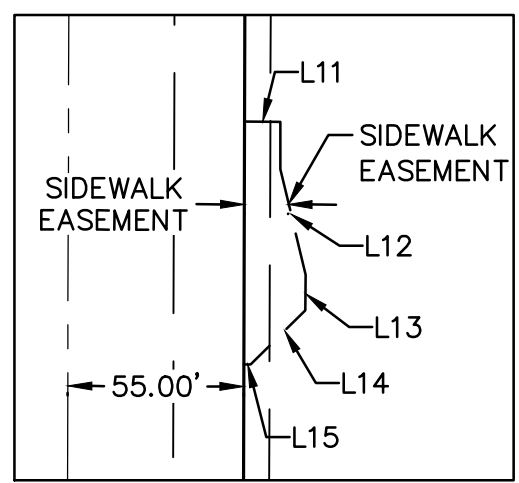
33.00' COUNTY ROADWAY PER  
BK. 4, PG. 44 ROADMAP  
BK. 6, PG. 27 ROADMAP  
BK. 85 OF MISC, PG 323

SARIVAL AVENUE  
WEST LINE OF THE SOUTHWEST QUARTER OF SECTION 7  
N0°10'31"E 2671.16' (BASIS OF BEARINGS)

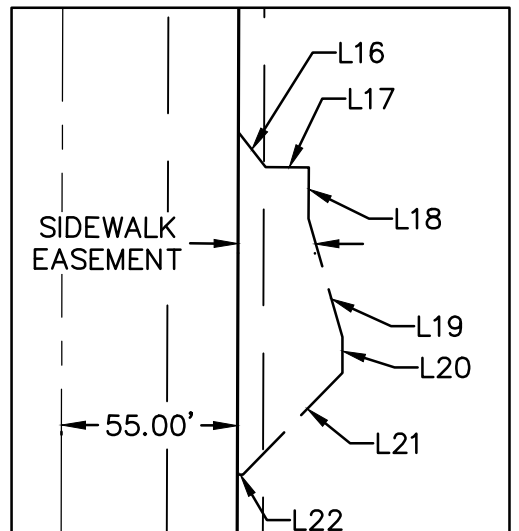
NALSUP AVENUE  
NORTH SOUTH MIDSECTION LINE OF SECTION 7  
S0°00'42"W 1328.28'



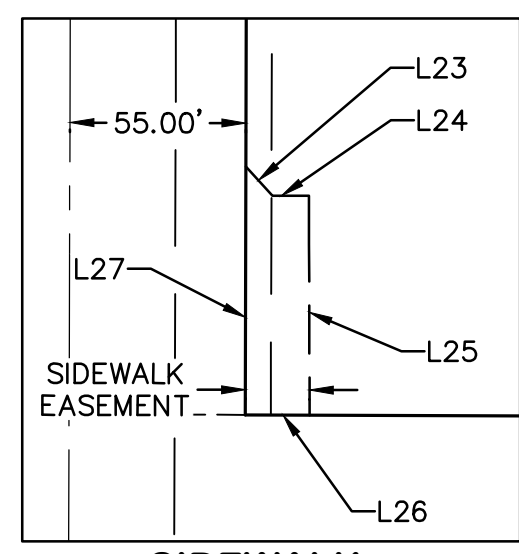
SIDEWALK EASEMENT 'A'



SIDEWALK EASEMENT 'B'



SIDEWALK EASEMENT 'C'



SIDEWALK EASEMENT 'D'

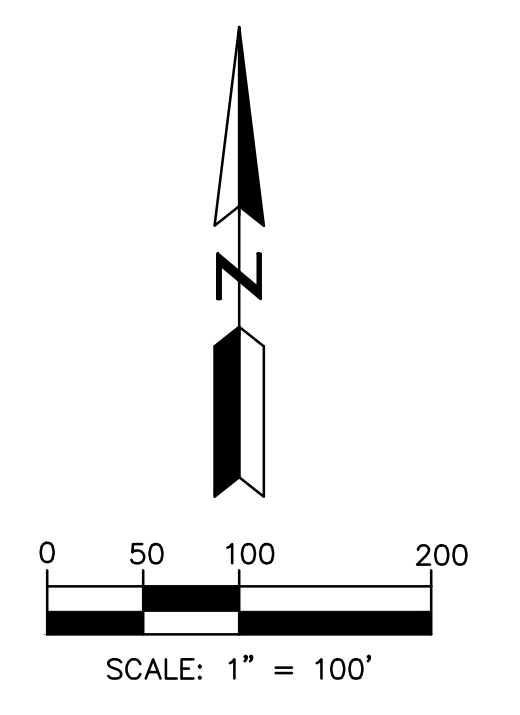
LINE	BEARING	DISTANCE
L1	S00°10'32"W	60.00'
L2	S89°35'04"E	22.00'
L3	S89°35'04"E	28.00'
L4	N00°10'32"E	60.00'
L5	N41°56'23"W	19.07'
L6	S89°43'12"W	9.36'
L7	N00°17'05"E	15.19'
L8	N08°19'35"E	36.99'
L9	N00°15'55"E	11.26'
L10	N45°17'10"E	23.79'
L11	N89°42'53"W	11.17'
L12	N13°31'05"W	33.96'

LINE	BEARING	DISTANCE
L13	N00°24'57"E	11.11'
L14	N45°16'28"E	24.04'
L15	N90°00'00"E	2.10'
L16	S37°51'23"E	13.78'
L17	S89°42'53"E	13.48'
L18	S00°16'52"W	16.01'
L19	S15°53'34"E	38.54'
L20	S00°00'00"E	11.12'
L21	S44°12'37"W	44.47'
L22	N89°49'34"W	1.73'
L23	S41°56'23"E	12.33'
L24	N89°43'12"E	11.39'

LINE	BEARING	DISTANCE
L25	S00°11'44"E	53.49'
L26	N89°40'25"W	20.13'
L27	N00°11'48"E	77.56'
L28	S89°44'56"E	50.00'
L29	N00°00'42"E	55.00'
L30	S89°44'56"E	50.00'
L31	N00°00'42"E	24.68'

**LEGEND:**

- ⊗ BRASS CAP IN HANDHOLE
- FOUND AS NOTED
- ⊙ BRASS CAP FLUSH
- MONUMENT LINE
- PROPERTY LINE
- - - EASEMENT LINE
- - - RIGHT-OF-WAY LINE



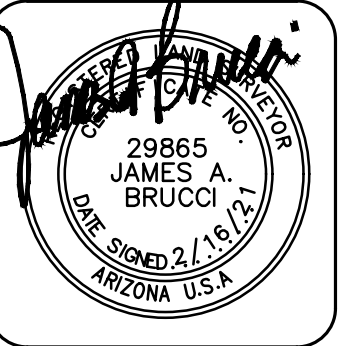
NO.	DATE	REVISION	BY

DRAWN BY: JR  
CHECKED BY: JAB

CIVIL AND SURVEY

**HUNTER**  
ENGINEERING

10450 N. 74TH ST., SUITE 200  
SCOTTSDALE, AZ 85258  
T 480 991 3985  
F 480 991 3986



**FINAL PLAT FOR  
VT 303 PROJECT SLIDER**

THE NORTH HALF OF THE SOUTHWEST QUARTER OF SECTION  
7, TOWNSHIP 2 NORTH, RANGE 1 WEST OF THE GILA AND  
SALT RIVER BASE AND MERIDIAN,  
MARICOPA COUNTY, ARIZONA

SECTION: 07  
TWN: 2N  
RANGE: 1W

JOB NO.:  
KUZK001-FP

SCALE  
1"=100'

SHEET  
**2 OF 2**

PURPOSE:  
**FINAL PLAT**