



Bickman Industrial ZON21-13

City Council Public Hearing – September 28, 2021





Request

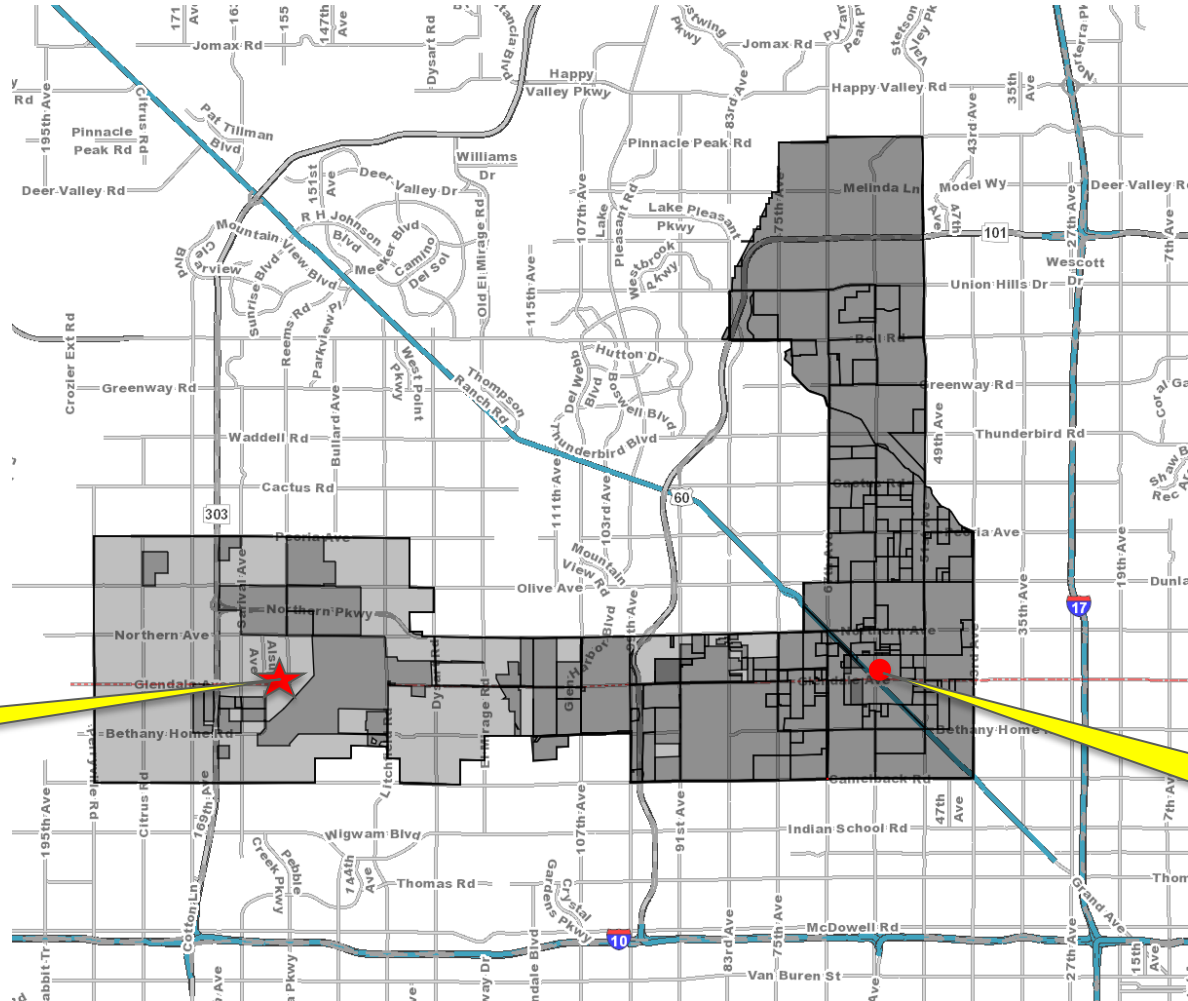
Rezone approximately 75 acres from RR-45 (Rural Residence) to PAD (Planned Area Development).

Applicant: Benjamin Tate, Withey Morris PLC



Vicinity Map

NWC
Corner
Glendale
Avenue &
Reems
Road



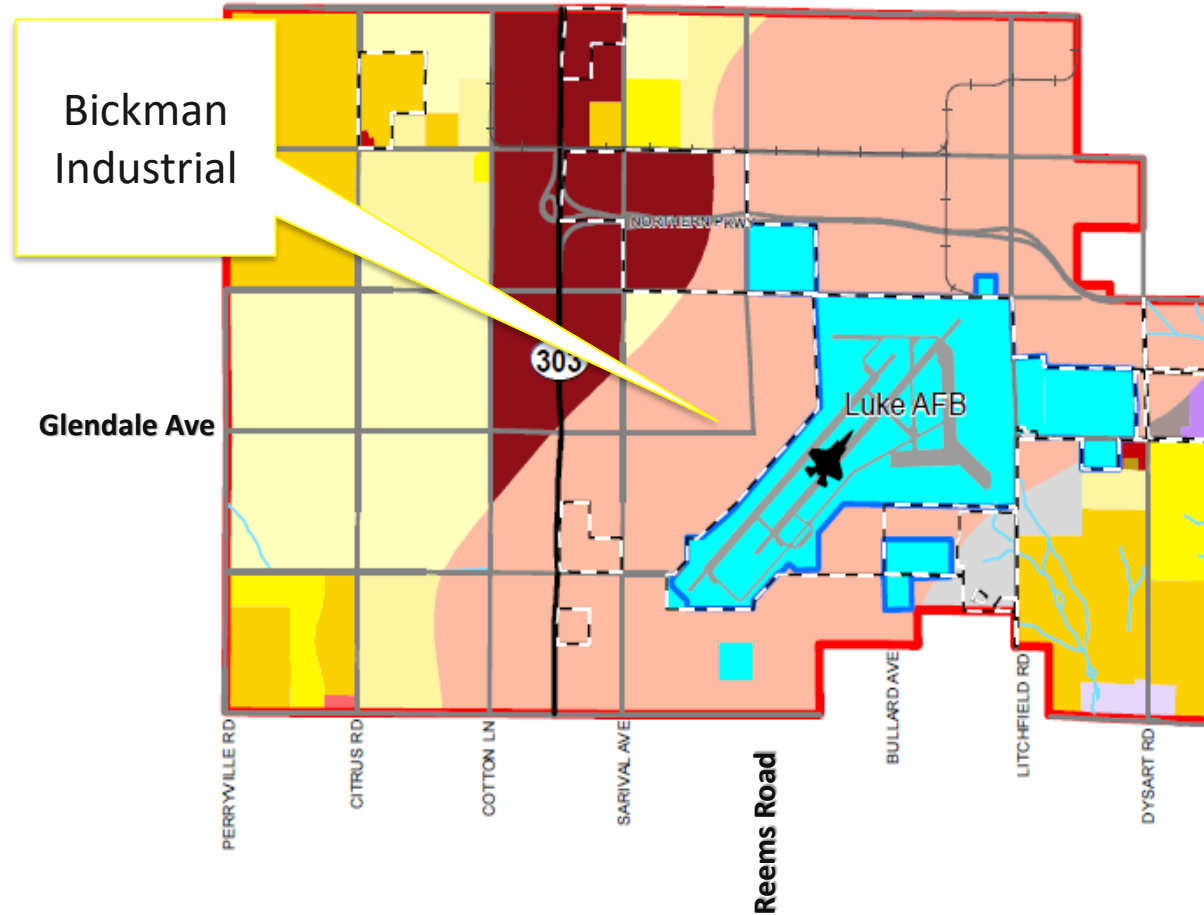
SITE

CITY HALL

General Plan- Envision Glendale 2040

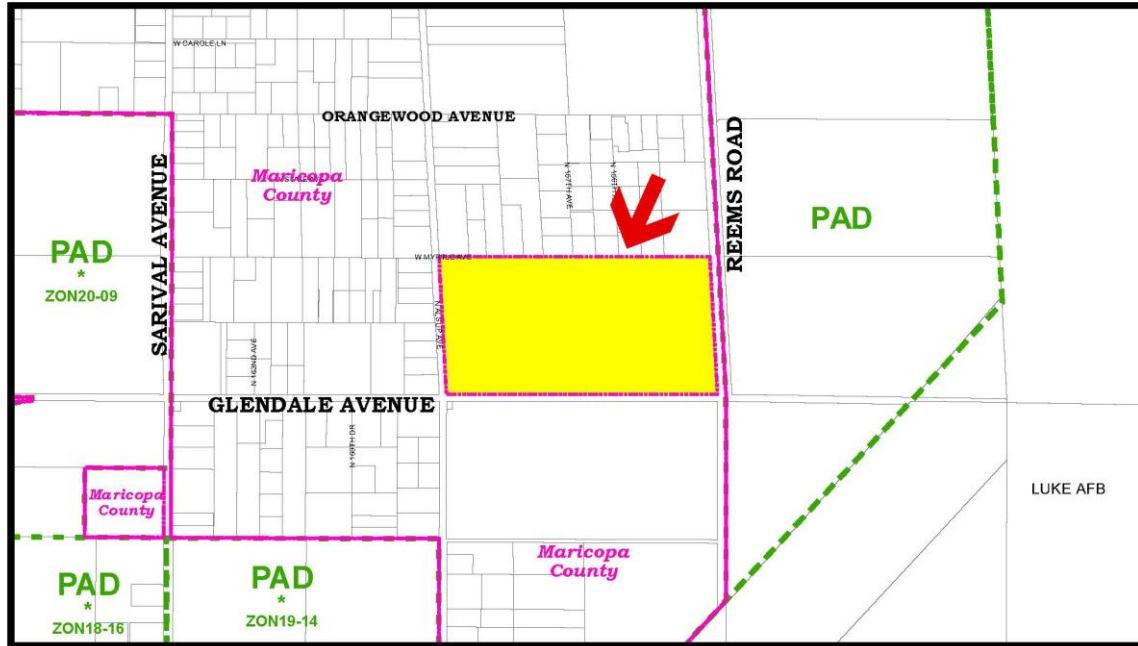
Land Use:

- Luke Compatible Land Use Area





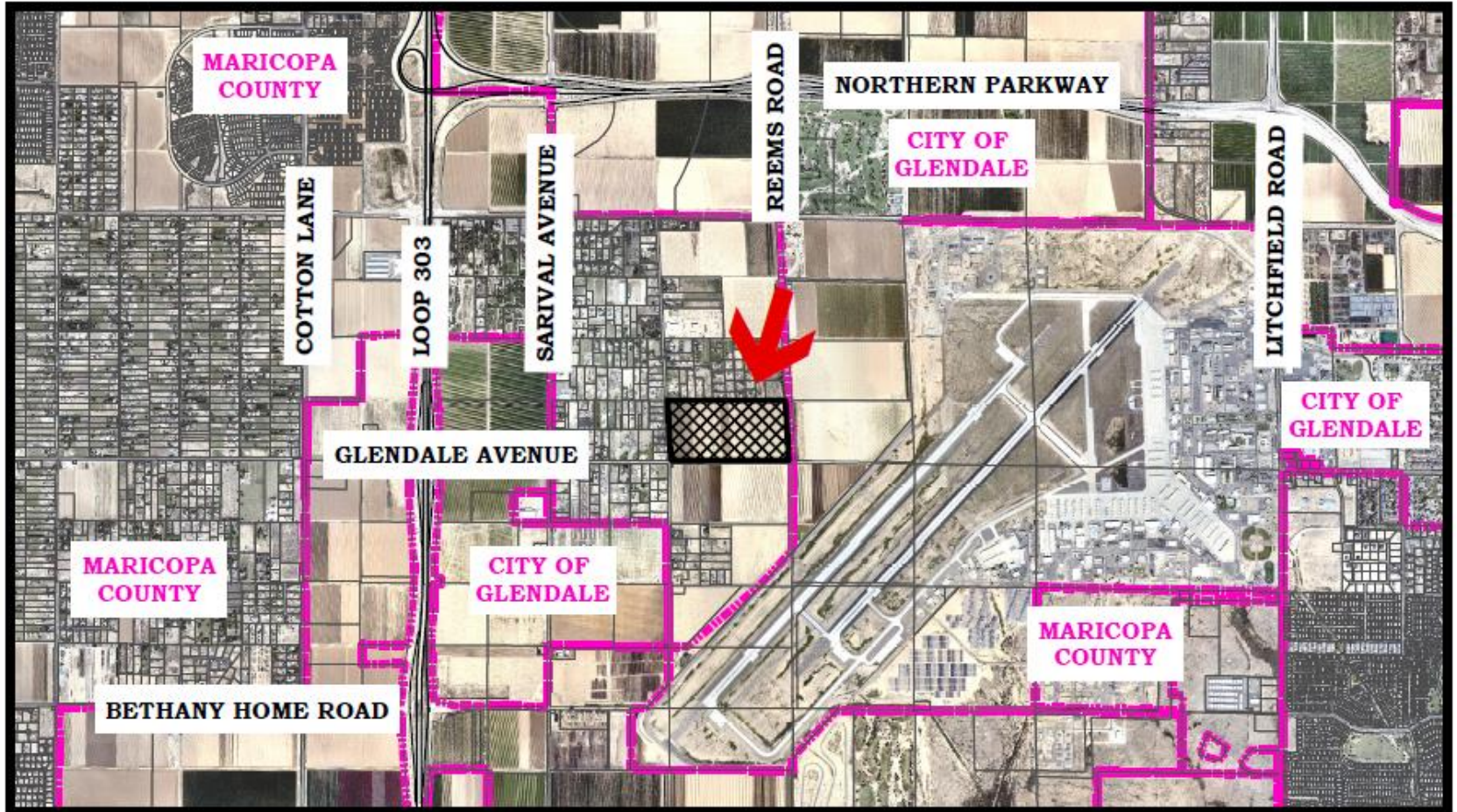
Zoning Map



	BICKMAN REZONING (ZON21-13)	REQUEST REZONE FROM COUNTY RU-43 TO PAD (PLANNED AREA DEVELOPMENT).
LOCATION NWC OF GLENDALE AVENUE & REEMS ROAD		



Aerial Map





Conceptual Site Plan





Conceptual Elevation





Bickman Industrial ZON21-13

City Council Public Hearing – September 28, 2021

