



# Hopewell ZON21-16

City Council Voting Meeting – October 26, 2021





# Request

---

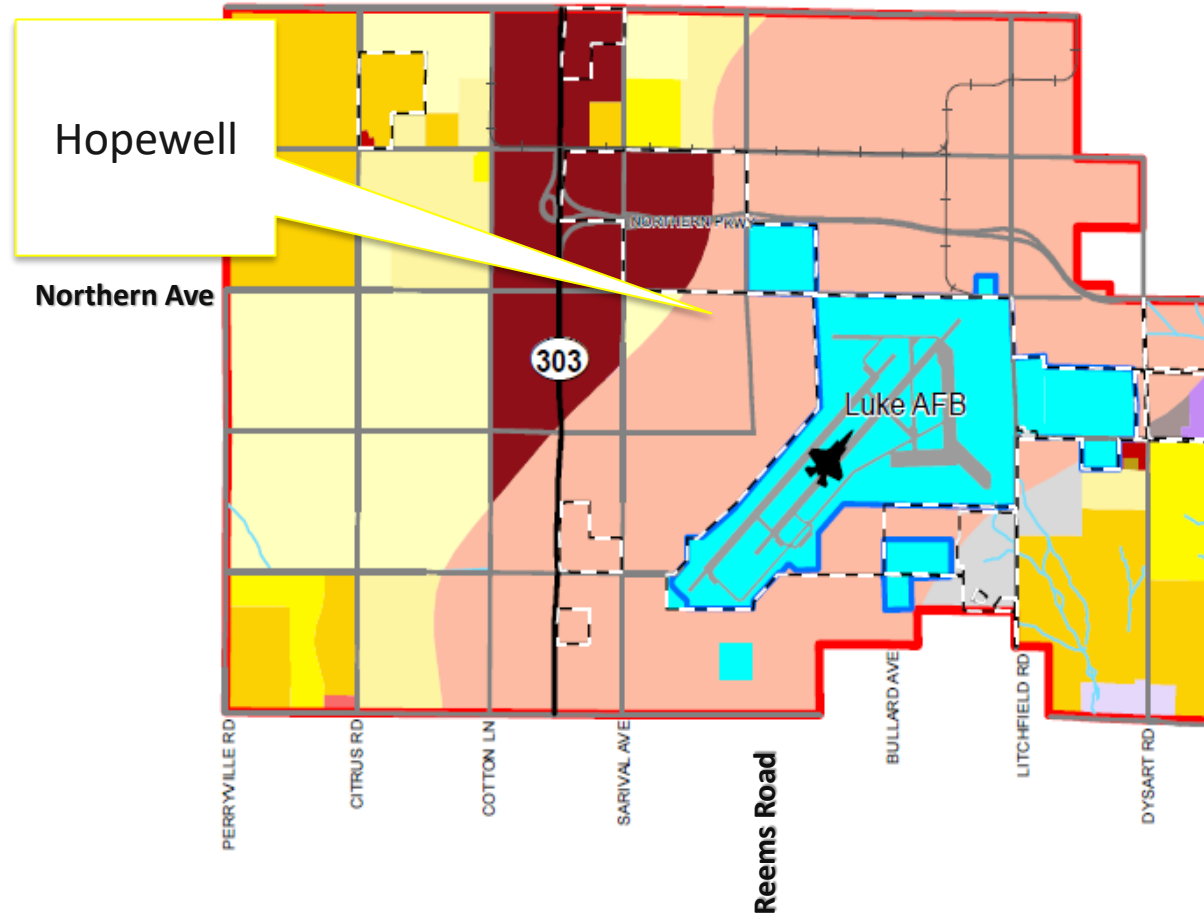
Rezone approximately 104 acres from Rural Residential to Planned Area Development

**Applicant:** Shaine T. Alleman (Tiffany & Bosco)

# General Plan- Envision Glendale 2040

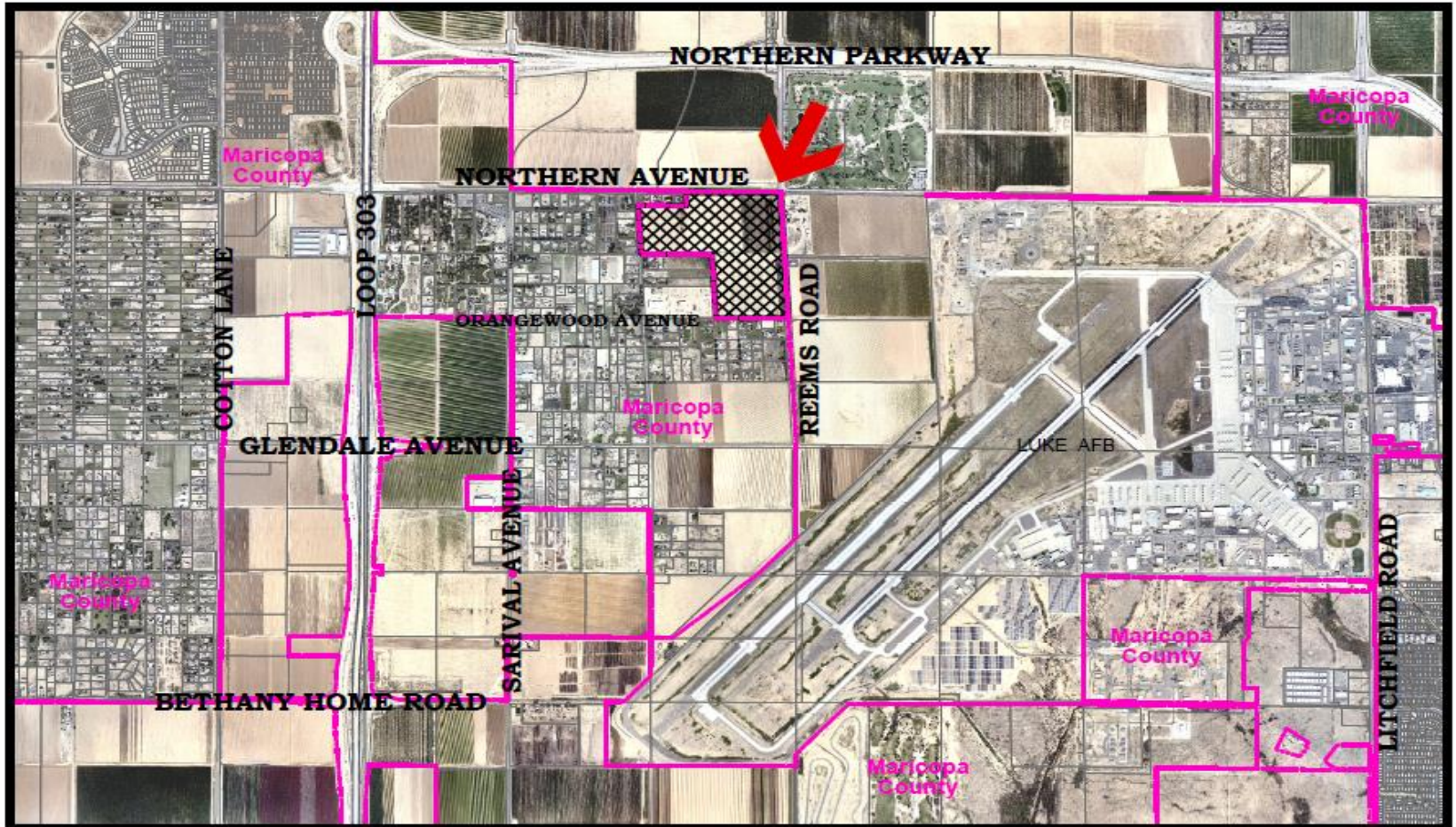
## Land Use:

- Luke Compatible Land Use Area





# Aerial Map



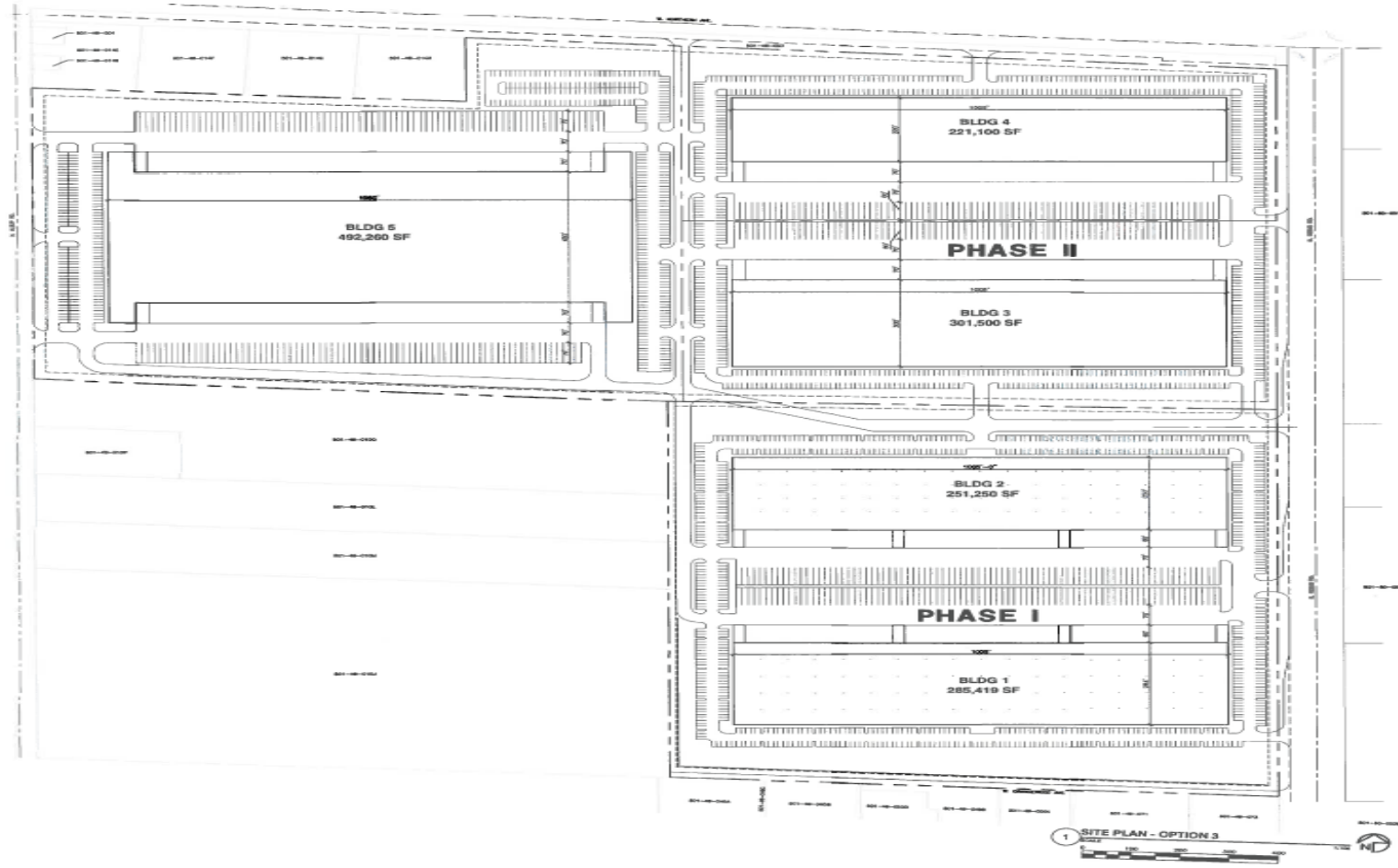


# PAD PROPOSAL

---

- Proposed land uses:
  - Industrial and Commercial
- Building Height
  - 85 feet
- Appropriate setbacks

# Site Plan





# Hopewell ZON21-16

City Council Voting Meeting – October 26, 2021

