



Thompson Thrift
Annexation Request AN-225
Adoption

City Council Public Hearing, November 9, 2021



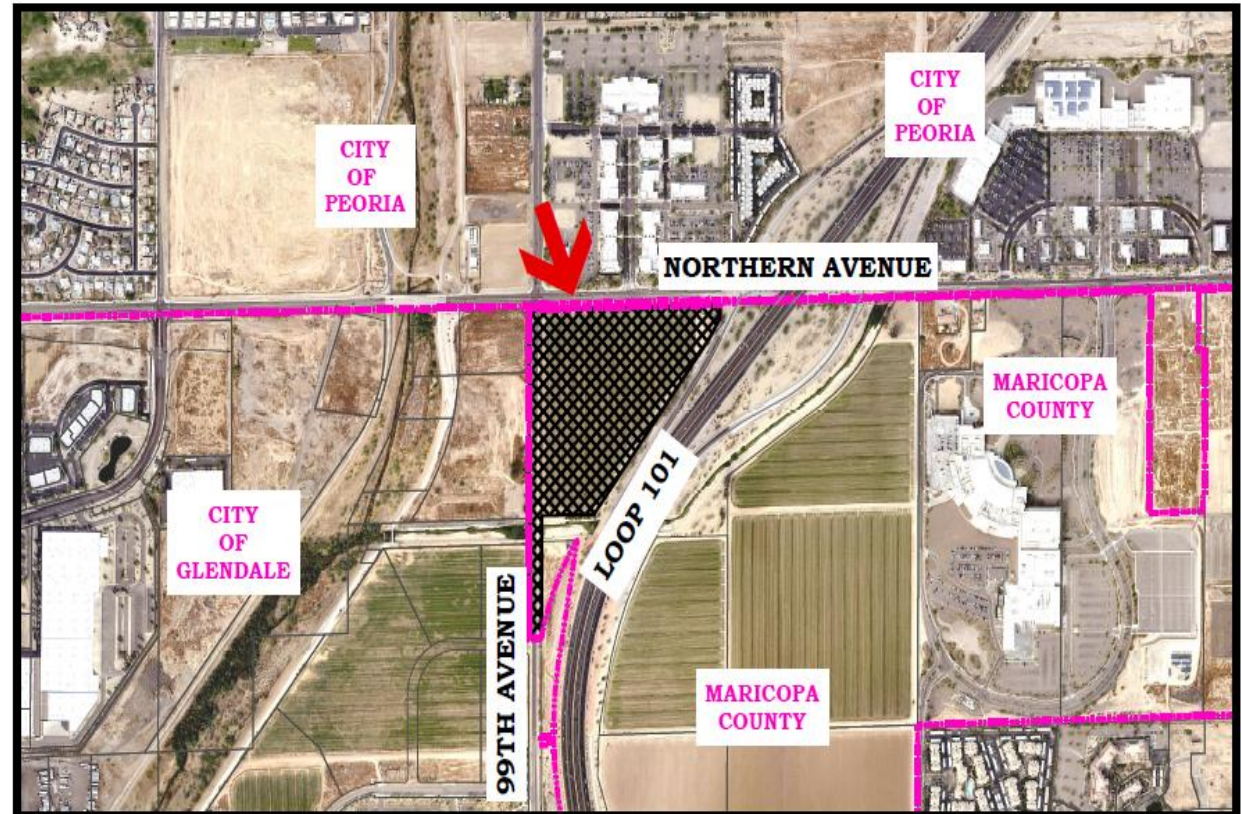


Annexation Request

- Thompson Thrift is an approximately 27-acre parcel located at the southeast corner of 99th and Northern Avenues.
- County jurisdiction zoning is C-2.
- Proposal is for a mixed-use development with retail, restaurants, a car wash, gas station/convenience store, and multi-family residential.

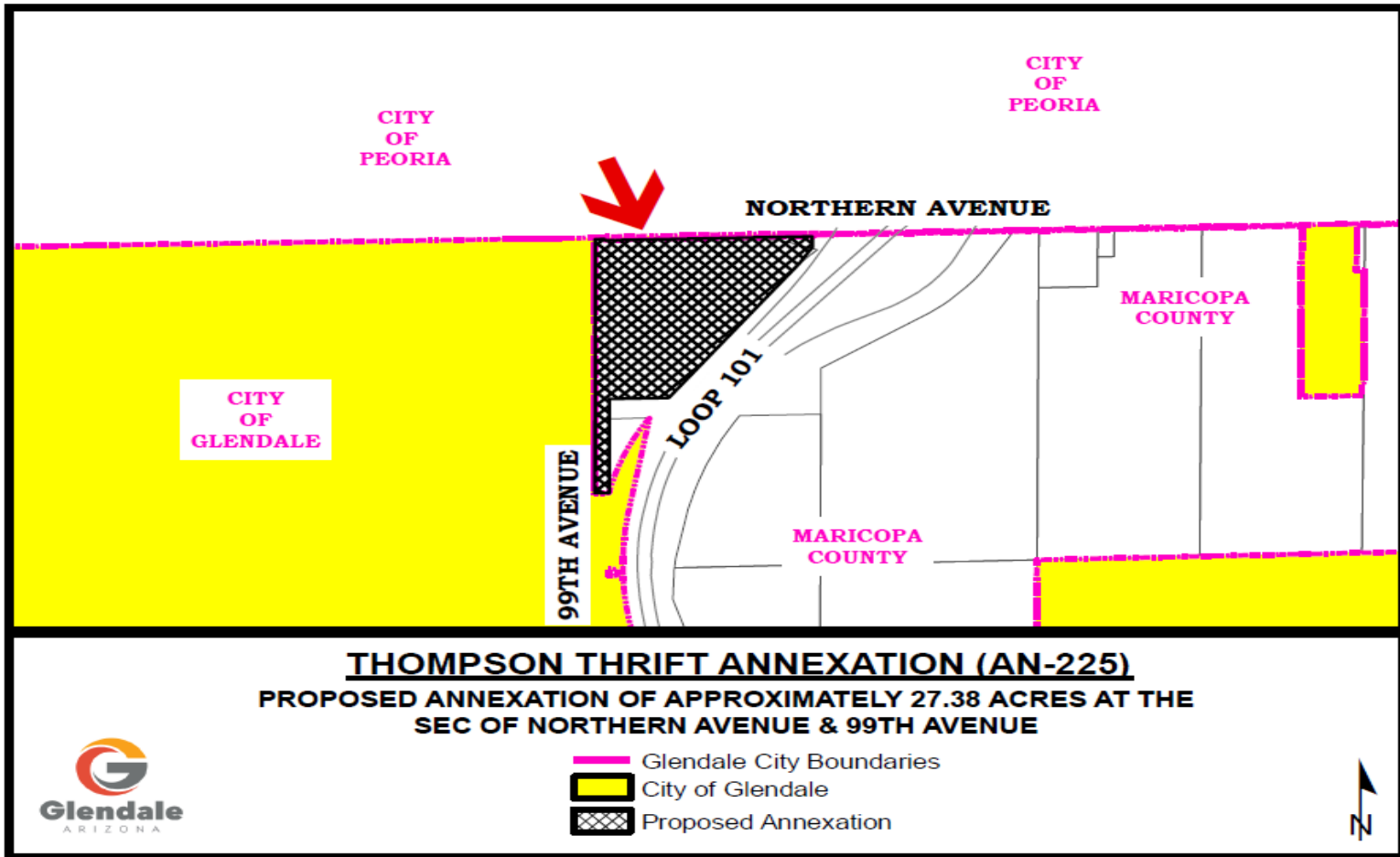
Aerial Map

- **North** - City of Peoria Retail
- **West** - City of Glendale
- **South** - City of Glendale
- **East** - Loop 101 and Maricopa County





Annexation Map





Thompson Thrift
Annexation Request AN-225
Adoption

City Council Public Hearing, November 9, 2021

