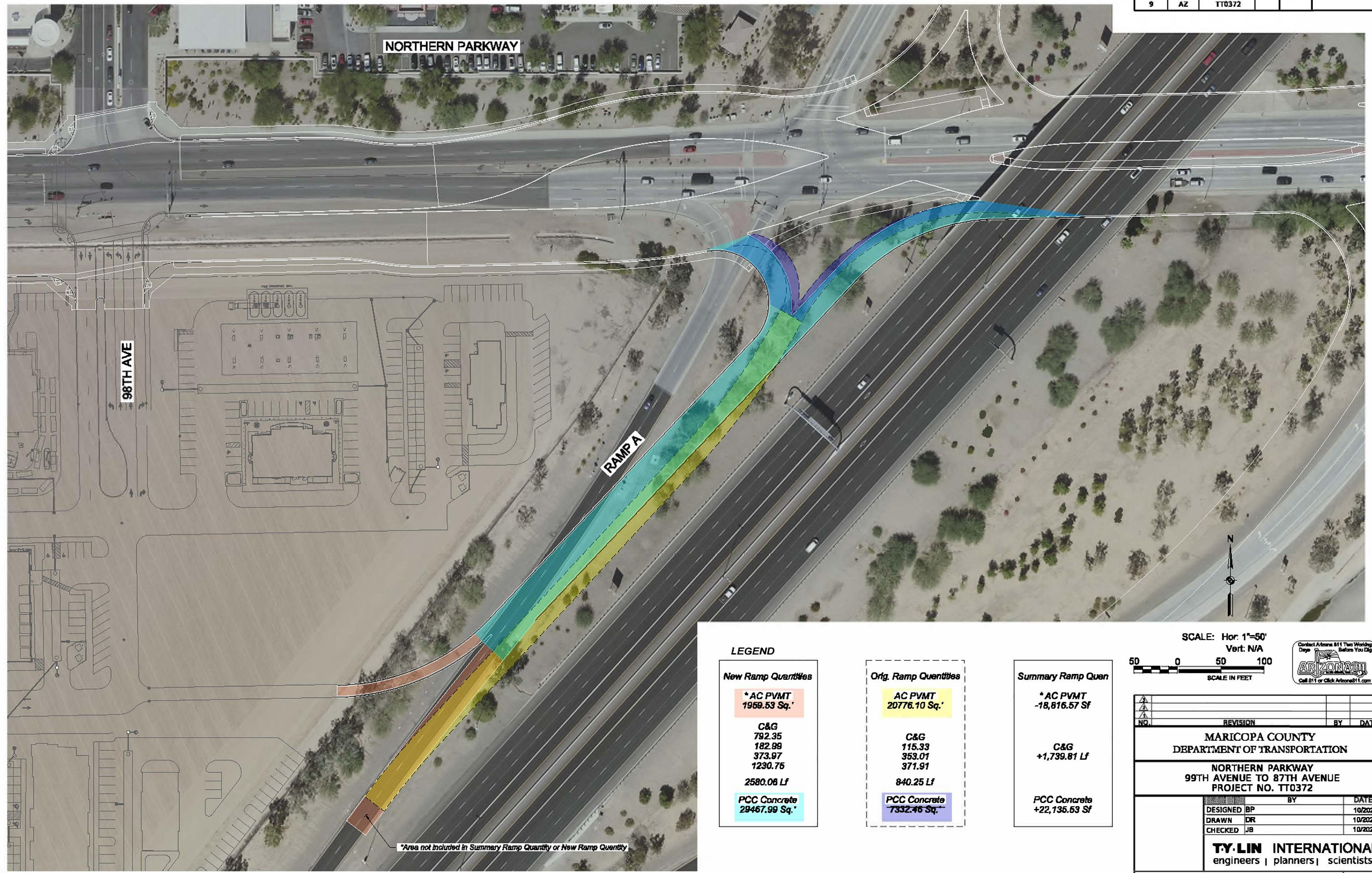


MCDOT\_TYUN\_HALF\_PRINT.dwg TYAL\_GM\_dwg\_half.dwg  
 10/4/2021 1:15:48 PM  
 QueryRoadDesign.dwg\_inpend  
 Dennis Ray  
 acbms\tyl-pw\denrsk\_mj@tyl.com\1606561\TT0372\_DS\_DS\_Ramp\_Quantity\_Exhibit.dwg



**LEGEND**

**New Ramp Quantities**

* AC PVMT 1959.53 Sq. *
C&G 792.35 182.99 373.97 1230.75 2580.08 Lf
PCC Concrete 29467.99 Sq. *

**Orig. Ramp Quantities**

AC PVMT 20776.10 Sq. *
C&G 115.33 353.01 371.91 840.25 Lf
PCC Concrete 7332.46 Sq. *

**Summary Ramp Quant**

* AC PVMT -18,816.57 Sf
C&G +1,739.81 Lf
PCC Concrete +22,135.53 Sf

\*Area not included in Summary Ramp Quantity or New Ramp Quantity

SCALE: Hor: 1"=50'  
Vert: N/A  
50 0 50 100  
SCALE IN FEET



NO.	REVISION	BY	DATE
<b>MARICOPA COUNTY</b> DEPARTMENT OF TRANSPORTATION <b>NORTHERN PARKWAY</b> <b>99TH AVENUE TO 87TH AVENUE</b> <b>PROJECT NO. TT0372</b>			
	DESIGNED	BP	10/2021
	DRAWN	DR	10/2021
	CHECKED	JB	10/2021
<b>TY.LIN INTERNATIONAL</b> engineers   planners   scientists			
<b>Ramp A - Quantity Evaluation</b> Coordination Exhibit			SHEET 1 of 1
TRACS NO.			