



Downtown Campus Reinvestment Project

Council Workshop Presentation

December 14, 2021





Agenda

The Project

- Background
- Aspirations
- Continuity of Operations
- Timeline
- Funding

The Project



Support Our Mission | Elevate Our Brand



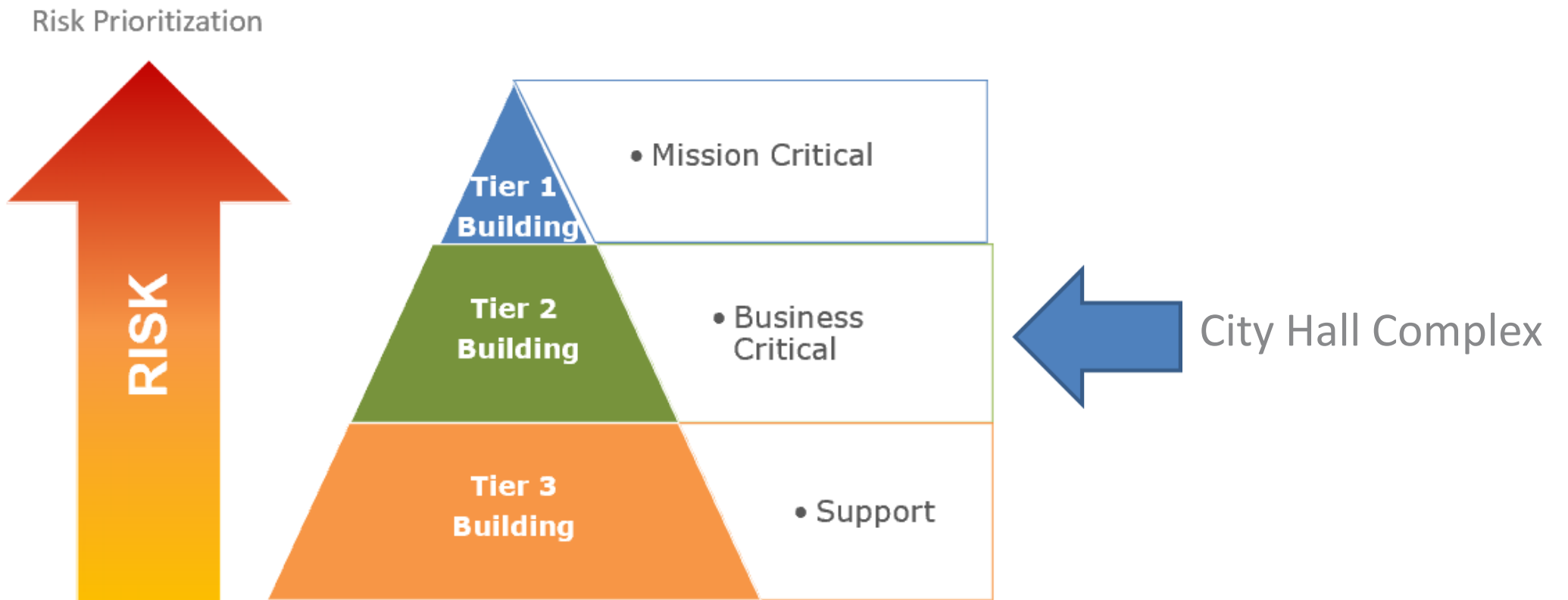
**Our
Community**

We are the community of choice for residents, businesses and employees

We improve the lives of the people we serve everyday

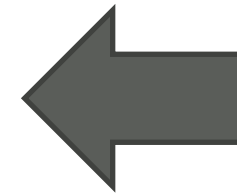


Building Asset Philosophy: Tiered Buildings



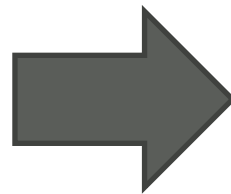


December 2020 Council Workshop



Sky Harbor Terminal 3
Prior to Modernization

Sky Harbor Terminal 3
Post Modernization





Glendale's Character and Culture

What do we want our building to reflect?





Background: A Potential Future



Glendale City Hall,
Present Day



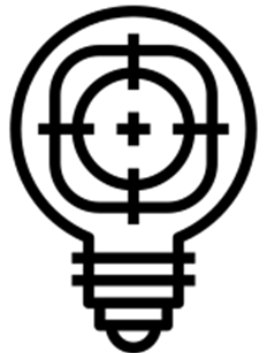
Glendale City Hall,
Potential Future





Aspirational Drivers

- ① REIMAGINE DOWNTOWN CAMPUS AS THE HEART OF THE COMMUNITY
- ② REINVENT THE AMPHITHEATER TO BECOME A DESTINATION, A TRUE PUBLIC/PRIVATE PERFORMANCE VENUE
- ③ CONSOLIDATING SERVICE TO THE COMMUNITY IN A ONE STOP SHOP
- ④ CREATING A STATE-OF-THE-ART WORKPLACE ENVIRONMENT
- ⑤ REINVENT AND REFLECT THE EXISTING BUILDING FACADES



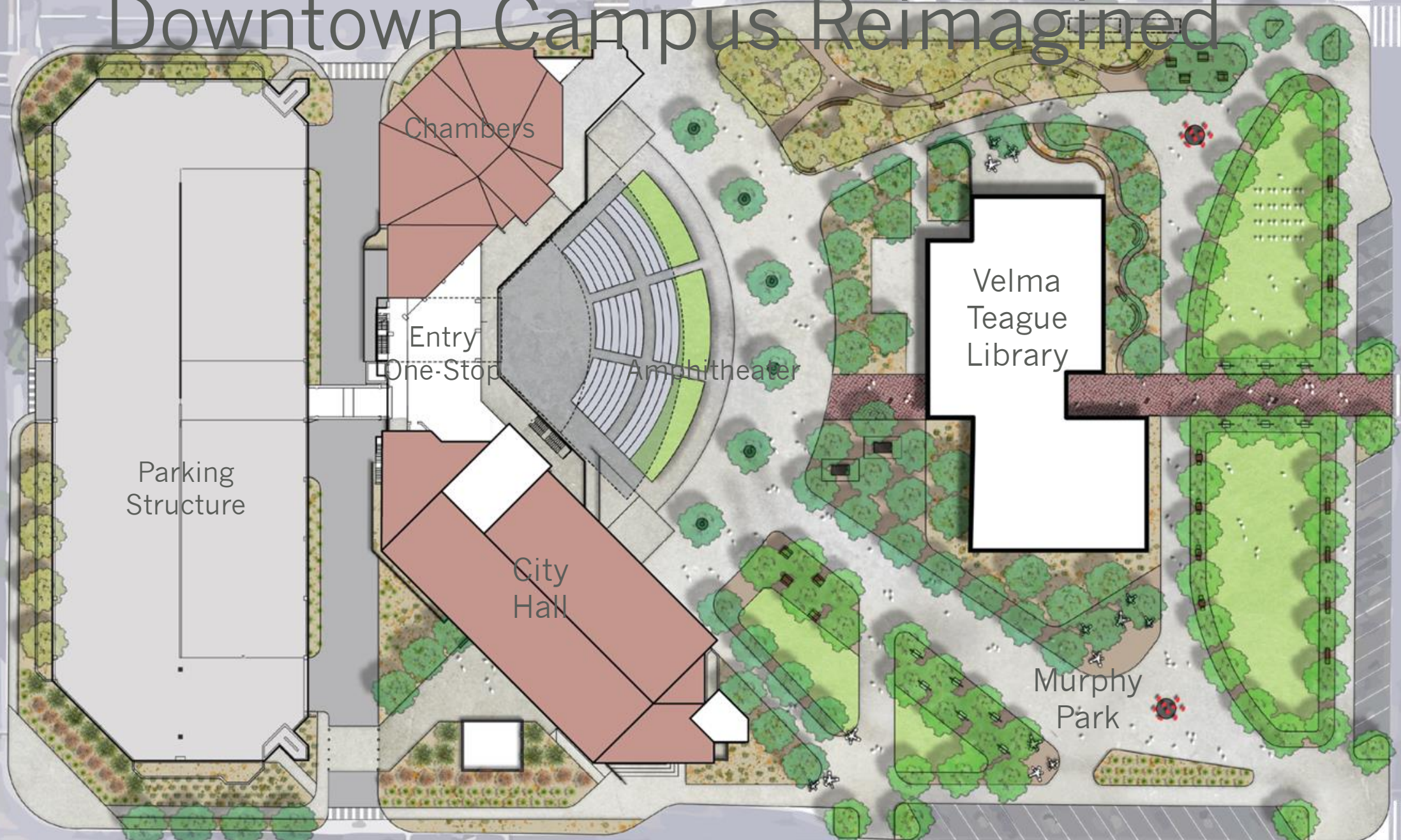


Downtown Campus Today

- ① Site encourages patrons to Circle the park, less integrated with City Hall, Chambers & Amphitheater.
- ② Unclear wayfinding experience
- ③ South deceleration lane creates Pedestrian safety concerns.
- ④ Changes to flood irrigation throughout the years has Negatively impacted mature trees.



Downtown Campus Reimagined



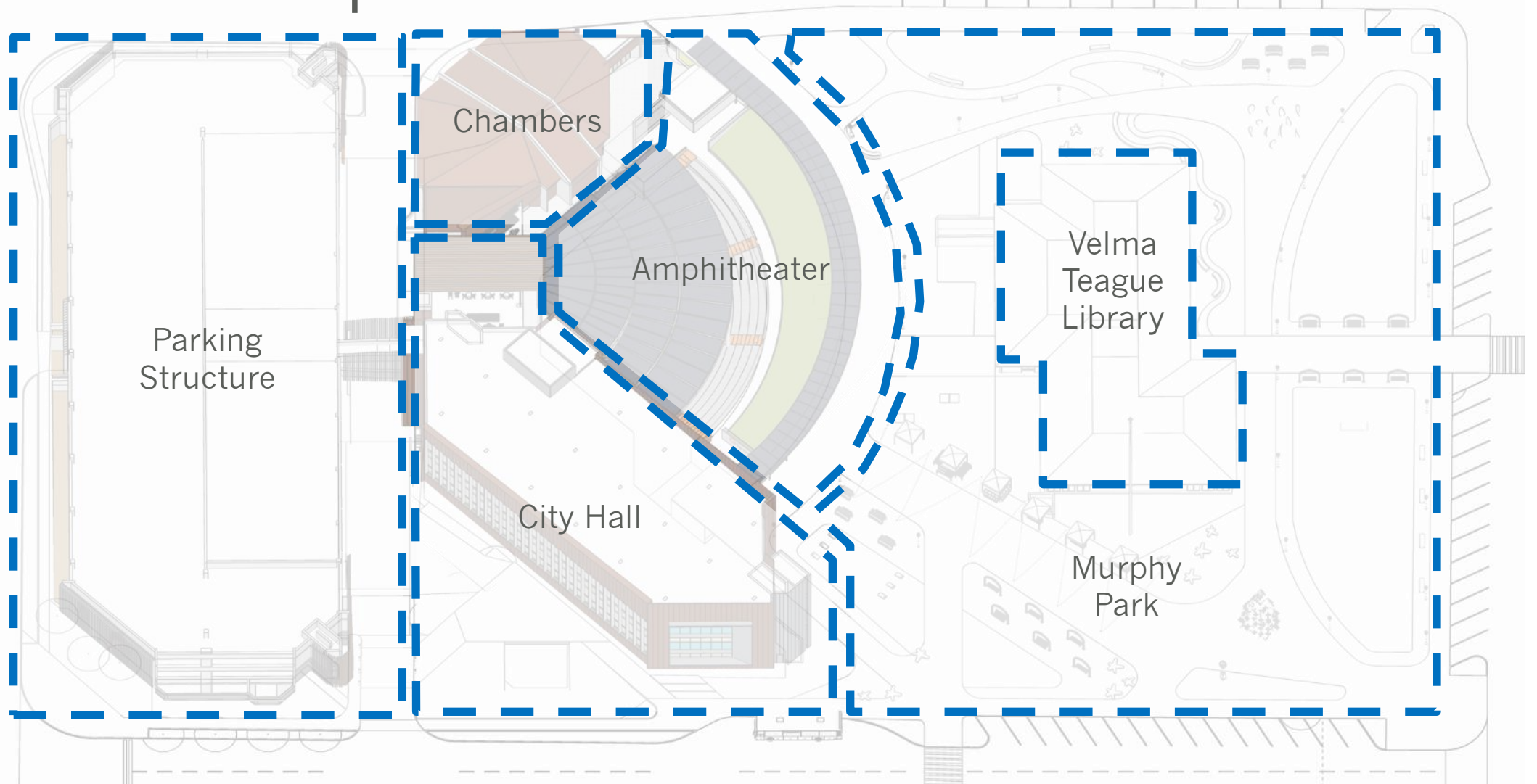


Downtown Campus Aspirations

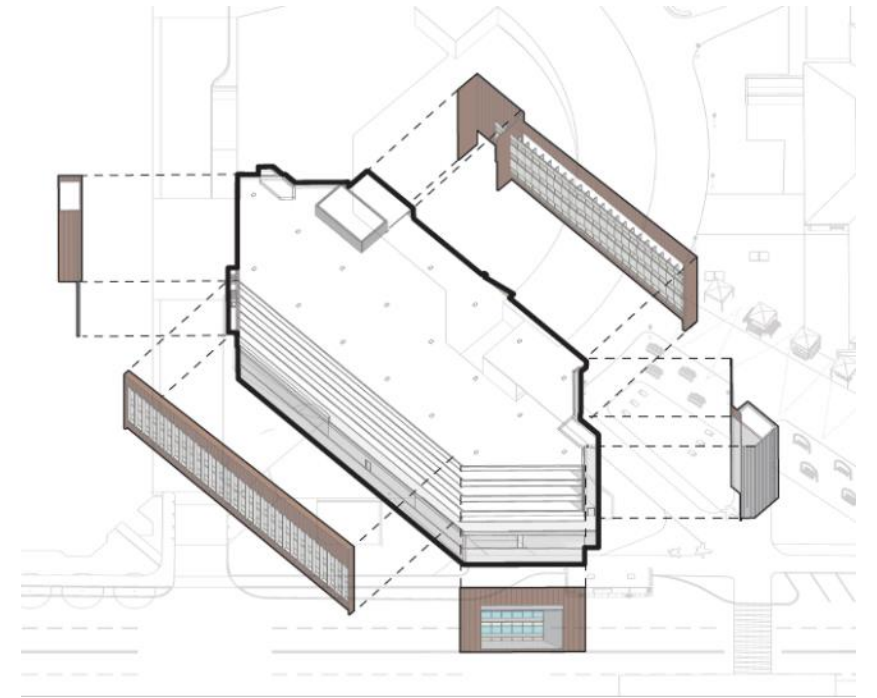




The Components



City Hall

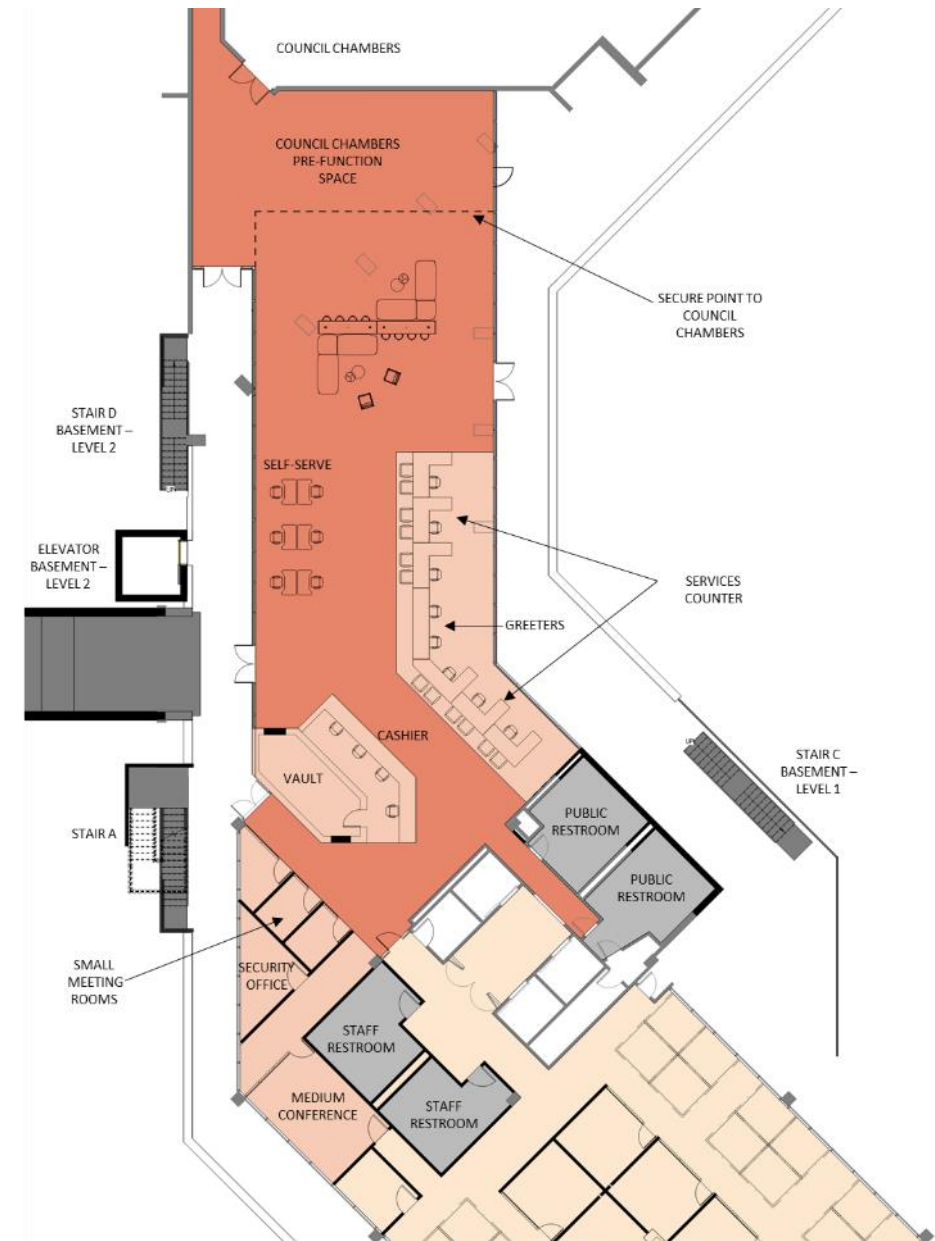


- Exterior skin replacement
- One Stop Shop
- Renovate all six floors
- Modernize Life Safety, ADA, & Building Systems
- Expand Restroom Core
- New roof form

City Hall-Glendale Avenue



City Hall One Stop Shop



City Hall Workplace Environment



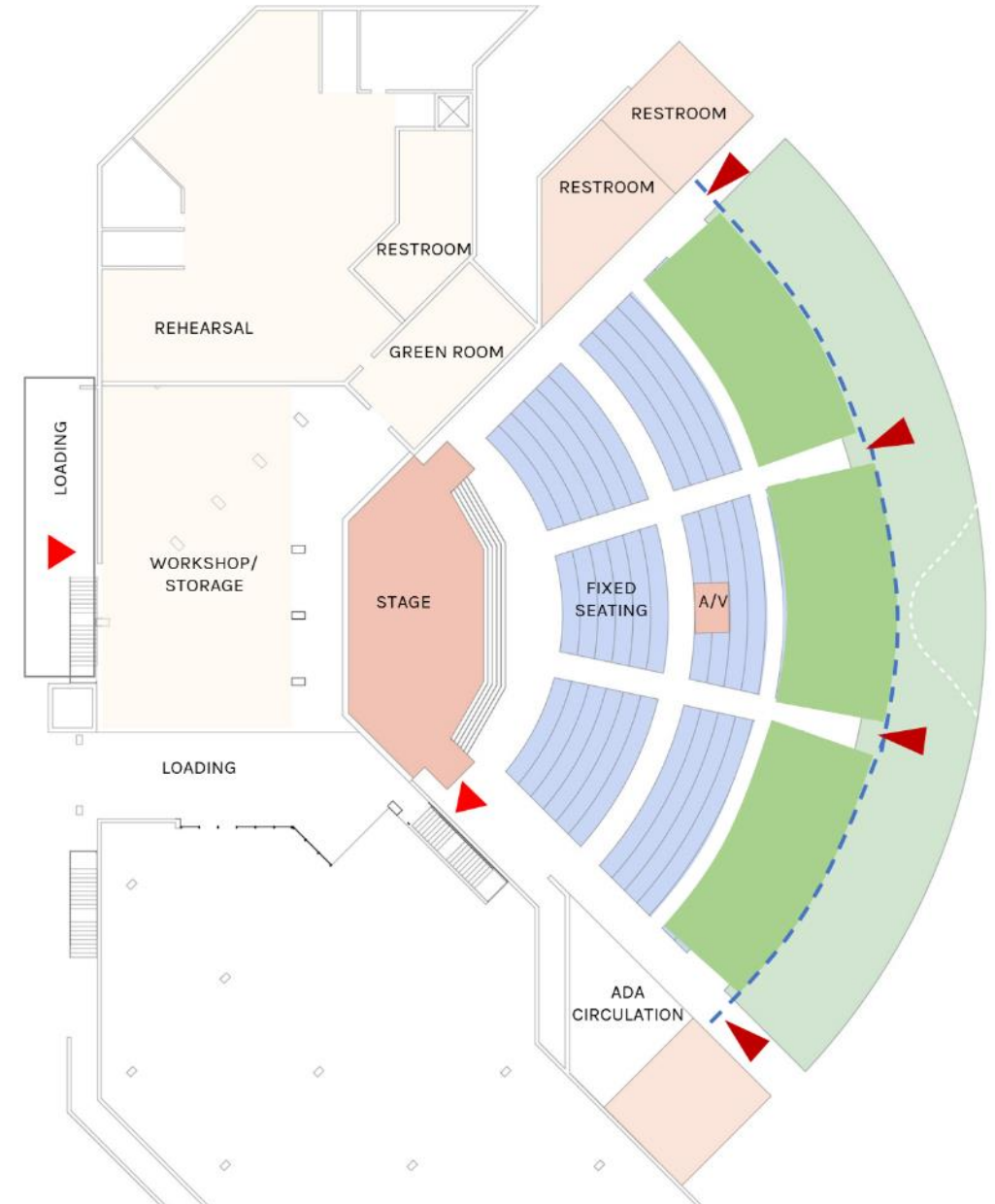
City Hall Connections



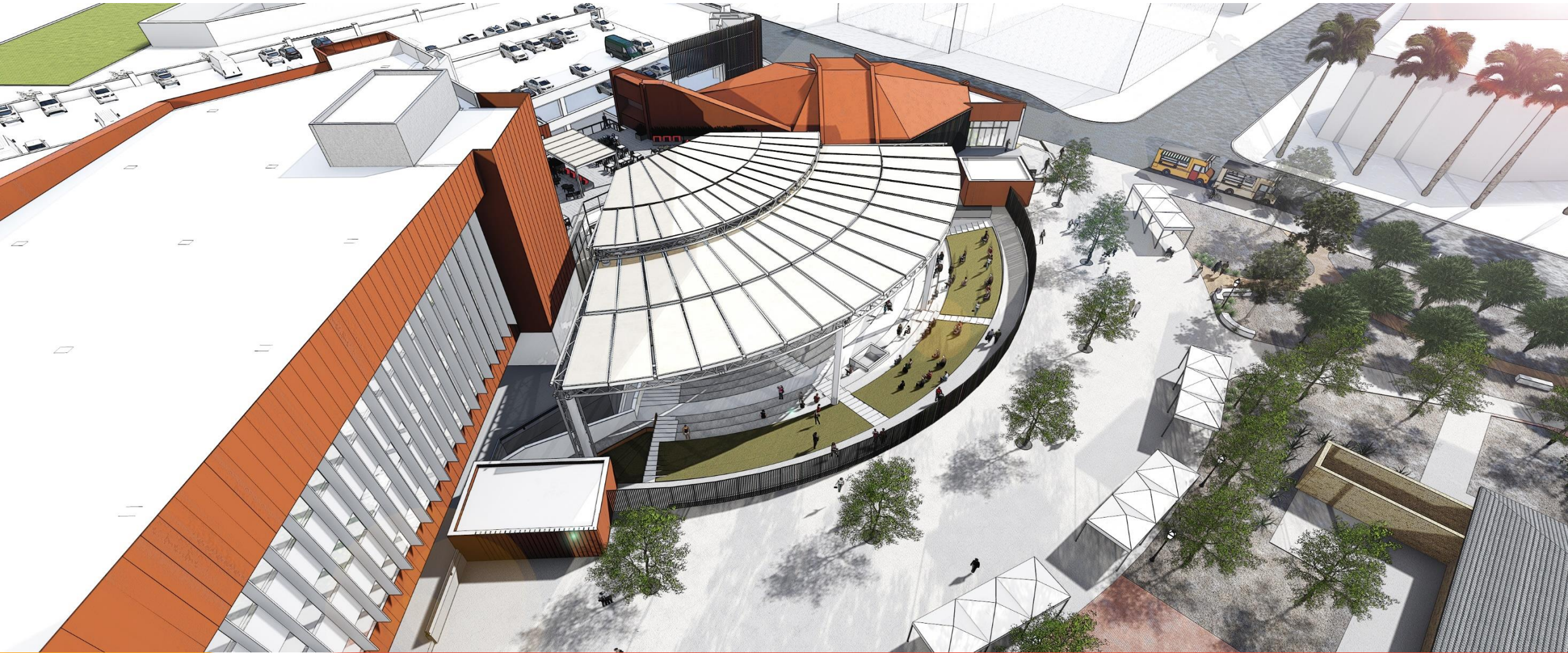
Amphitheater



- Approx. 500 fixed seats | 400 lawn seats
- New Back of House
- Restrooms
- Shade Structure
- Perimeter fence



Amphitheater



Amphitheater

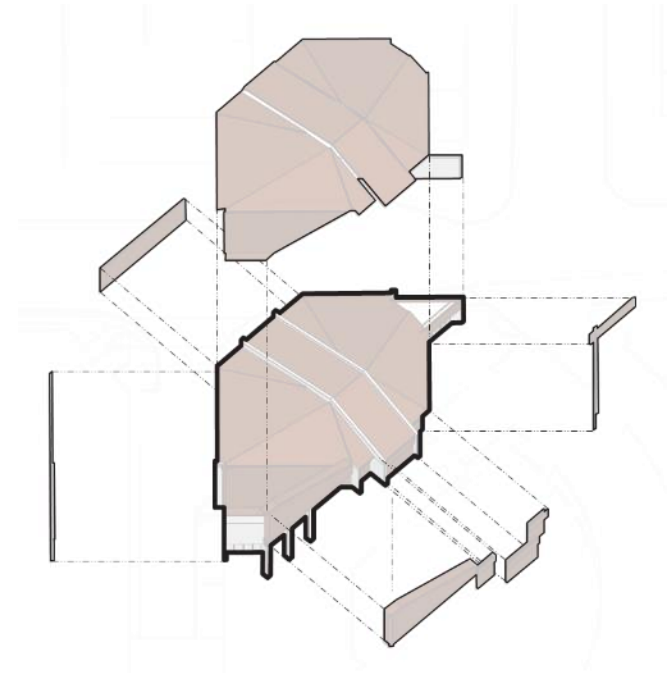


Amphitheater



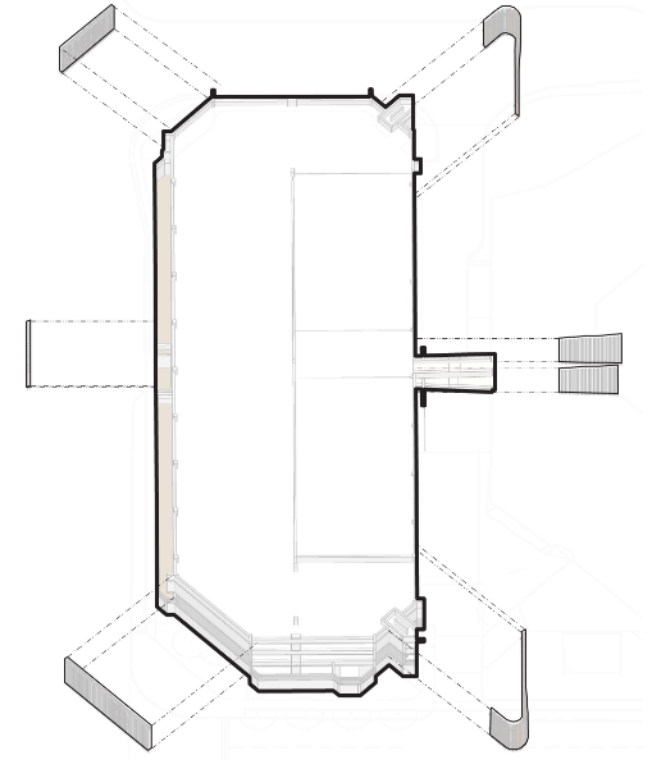


Council Chambers



- Standing seam roof replacement (same form and profile)
- West Façade Exterior skin refresh (patch and Paint)
- South, East, North Façade exterior skin replacement.

Parking Structure



- Exterior Skin Refresh at corners ,entries, bridge
- Paint exterior stucco
- Parking Striping
- Replace fire protection & alarm
- Upgrade surrounding landscape

Parking Structure Exterior



Parking Structure Bridge



Murphy Park



Complete Reconfiguration:

- Infrastructure, Earthwork, Lighting, Irrigation,
- Plaza Hardscape, Landscape, and Amenities



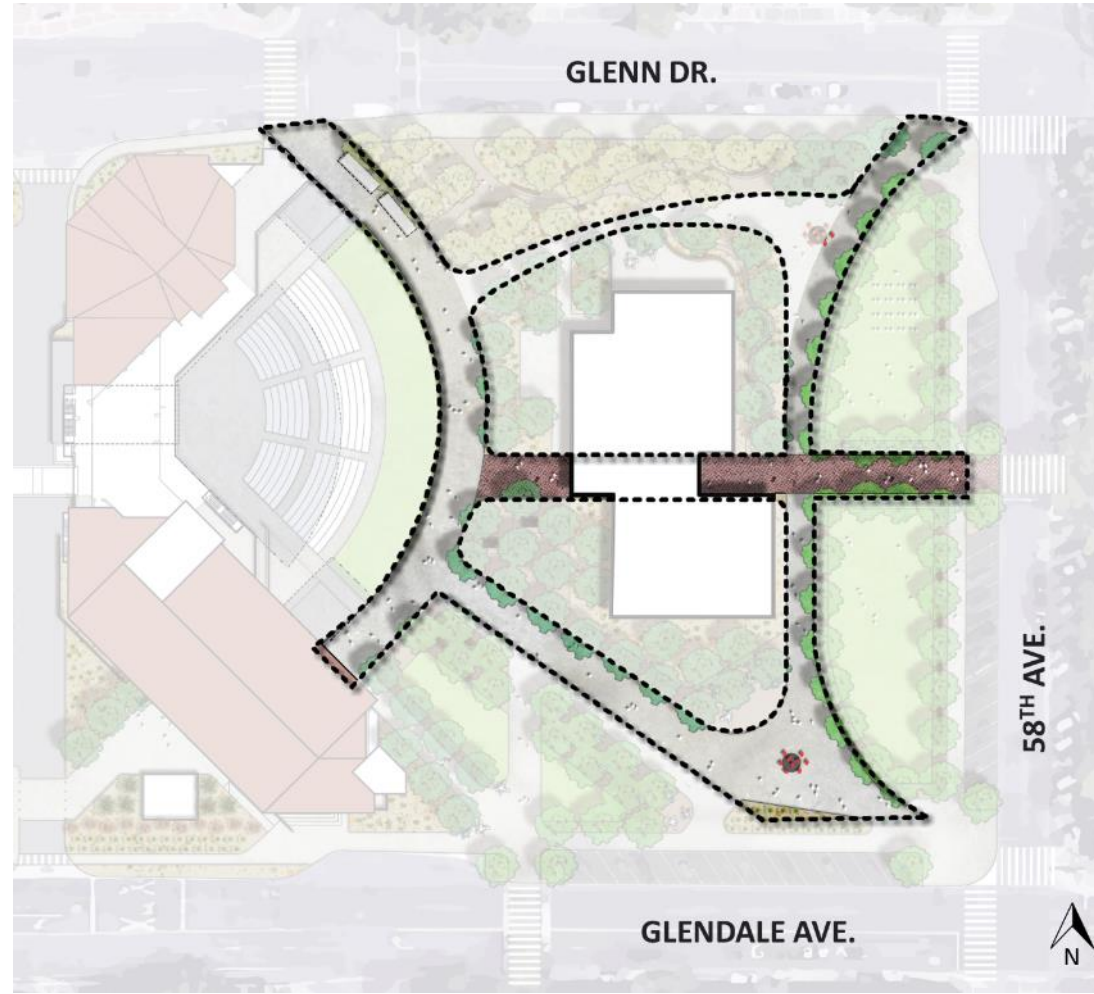
Murphy Park



NATIVE
DEMONSTRATION
GARDEN

PLAY NOOK AND
GARDEN ADJACENCIES
ENCOURAGE LEARNING

Velma Teague Library



- Interior Refresh
- Modernize building systems
- Paint exterior

Velma Teague Library



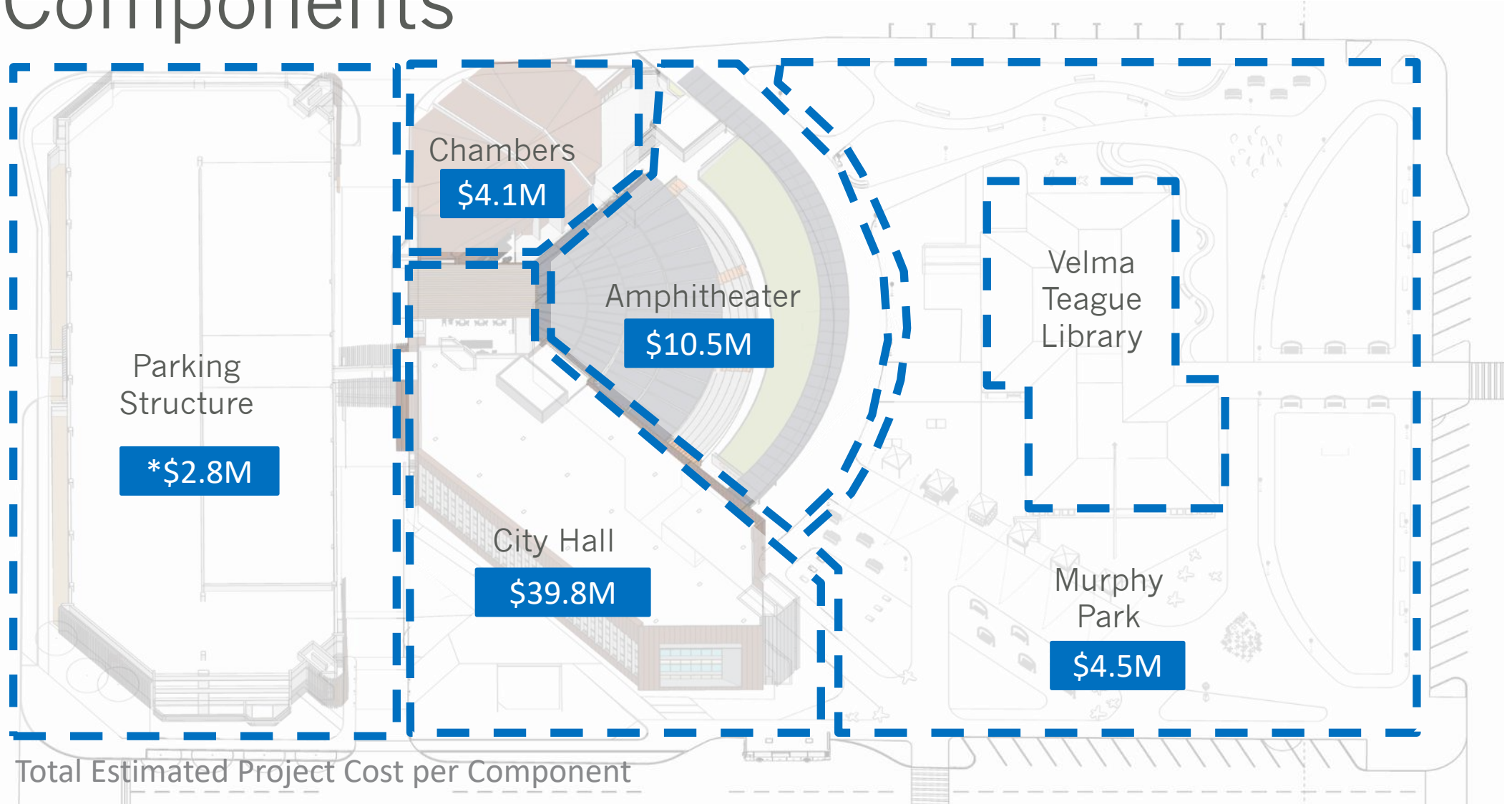
CREATE VISUAL CONNECTION TO LIBRARY

CELEBRATE LEARNING AND ENCOURAGE STAY

SHADED EDGES



Components



Total Estimated Project Cost per Component



City Hall Component

Estimated Project Cost and Schedules (includes design fees, construction, FFE, contingencies)

Summary:

- Occupancy: VACANT
- Cost: \$39.8M
- Schedule:
 - Design – 12 months
 - Construction 16 months





Continuity of Operations

Planning Objectives

- Seamless One Stop Shop experience for the customer.
- Special attention has been given to where employees are moved to...Both Permanently and Temporarily.
- The Fourth Floor Elected and Executive Office will be located together temporarily in the Media Center Building.
- All funds utilized, regardless of permanent or temporary spaces, will improve those spaces and the services the employees provide creating a legacy of investment.

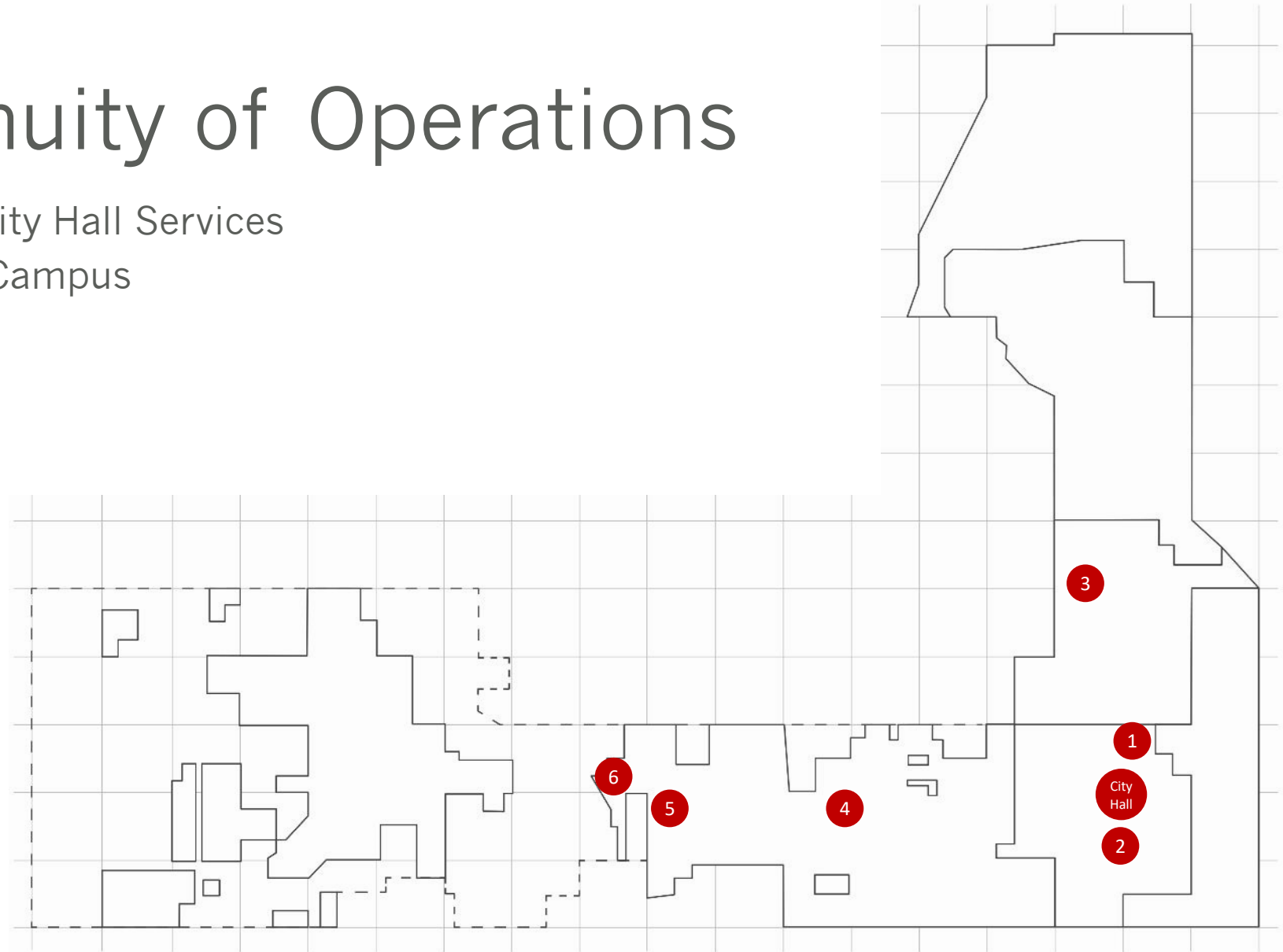




Continuity of Operations

Distribution of City Hall Services

- ① Civic Center Campus
- ② Sine Building
- ③ Adult Center
- ④ Media Center
- ⑤ Materials Lab
- ⑥ GRPSTC





Continuity of Operations



Materials Lab



Adult Center



Civic Center Campus



Sine Bldg.



GRPSTC



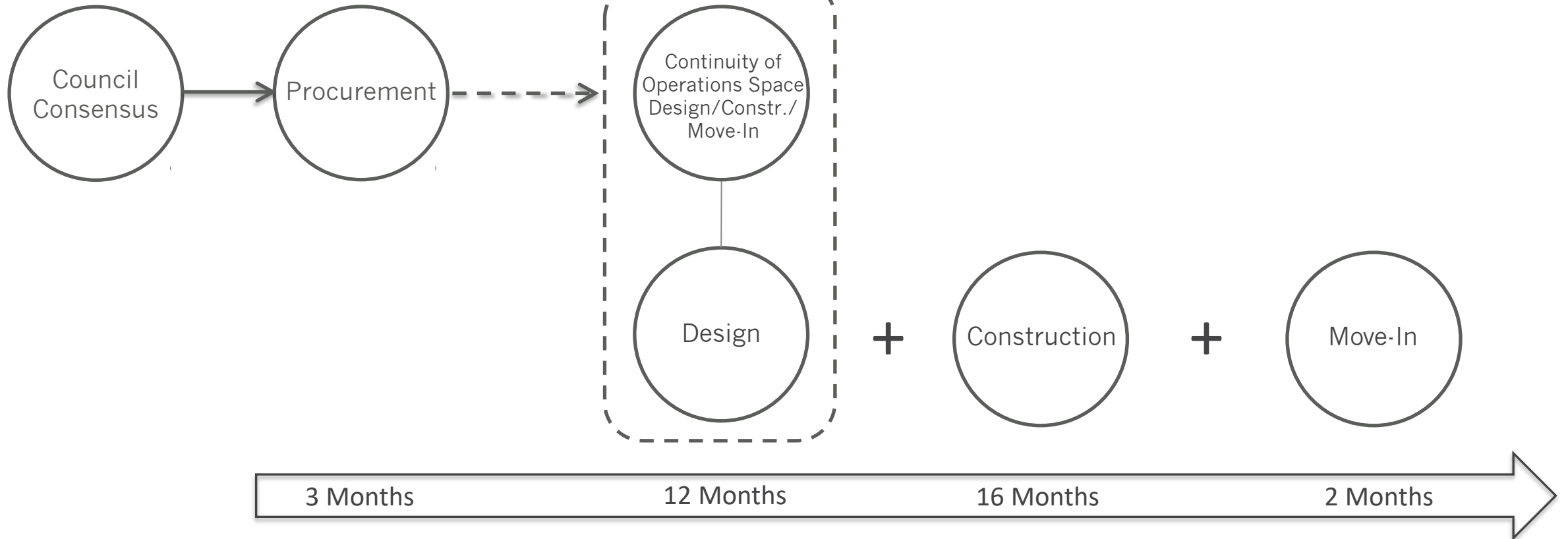
Media Center

Total Estimated Project Costs \$6.8M



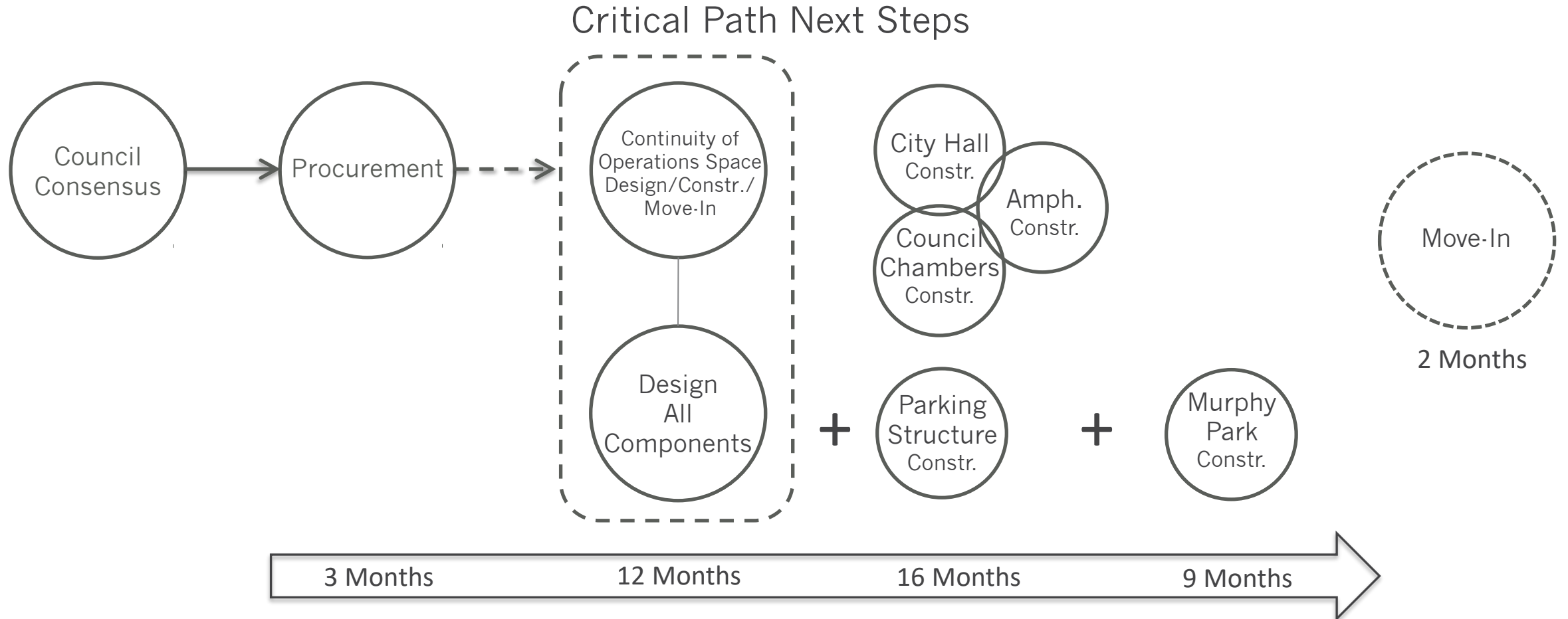
City Hall Project Timeline

Critical Path Next Steps





Timeline – All Components





FUNDING

PROJECT	FY22-31 ADOPTED CIP	PROPOSED BUDGET	DIFFERENCE
City Hall	\$15,380,150	\$39,750,000	(\$24,369,850)
Continuity of Operations*	\$1,158,200	\$6,837,175	(\$5,678,975)
Amphitheater	\$2,872,624	\$10,500,000	(\$7,627,376)
Parking Garage	\$1,475,000	\$4,288,650	(\$2,813,650)
Council Chambers	\$0	\$4,100,000	(\$4,100,000)
Murphy Park	\$0	\$4,500,000	(\$4,500,000)
TOTAL	\$20,885,974	\$69,975,825	(\$49,089,851)

*Adult Center

