



Ergas 303

Annexation Request AN-230

Adoption

City Council Voting Meeting, December 14, 2021



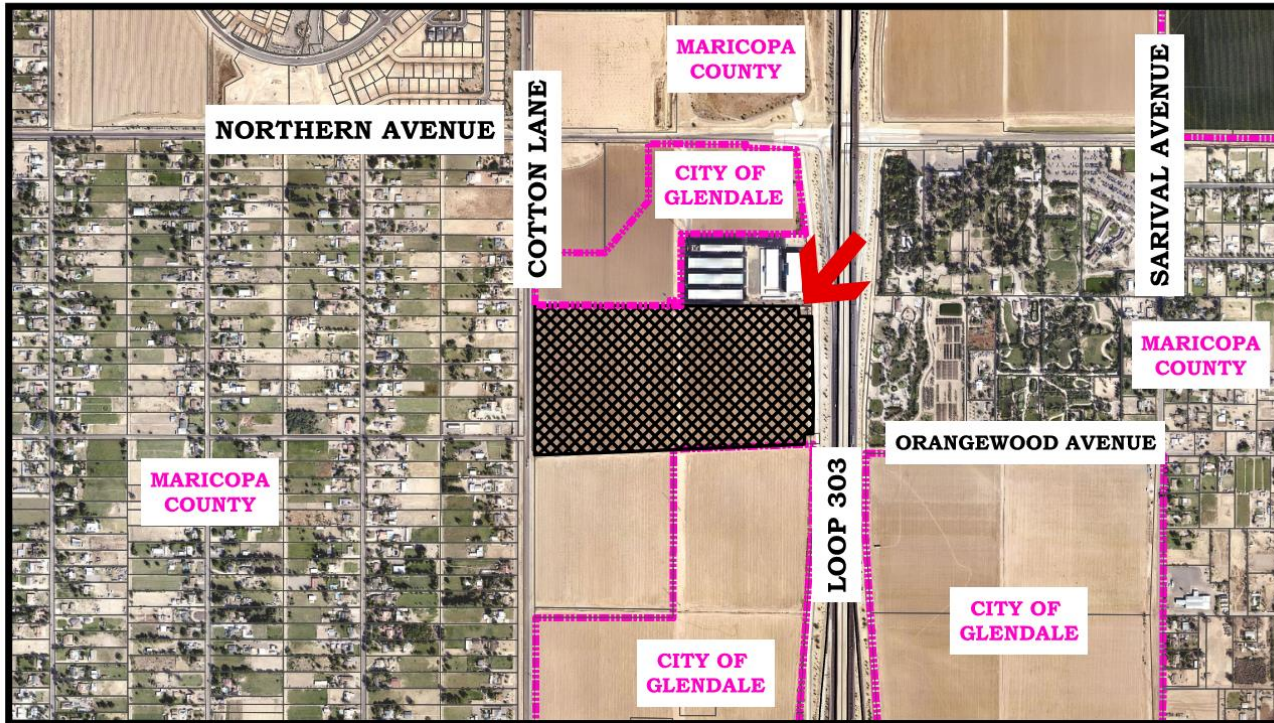


Annexation Request

- Ergas 303 is an approximately 63 - acre parcel located south of the southeast corner of Northern Avenue and Cotton Lane
- County jurisdiction zoning is IND-1 and IND-2.
- Proposal is to rezone the property to M-1 (Light Industrial).



Annexation Request





Aerial Date: October 2020

ERGAS ANNEXATION (AN-230)

PROPOSED ANNEXATION OF APPROXIMATELY 63.15 ACRES
AT THE SEC OF COTTON LANE AND NORTHERN AVENUE.



-  Glendale City Boundaries
-  Proposed Annexation





Ergas 303

Annexation Request AN-230

Adoption

City Council Voting Meeting, December 14, 2021

