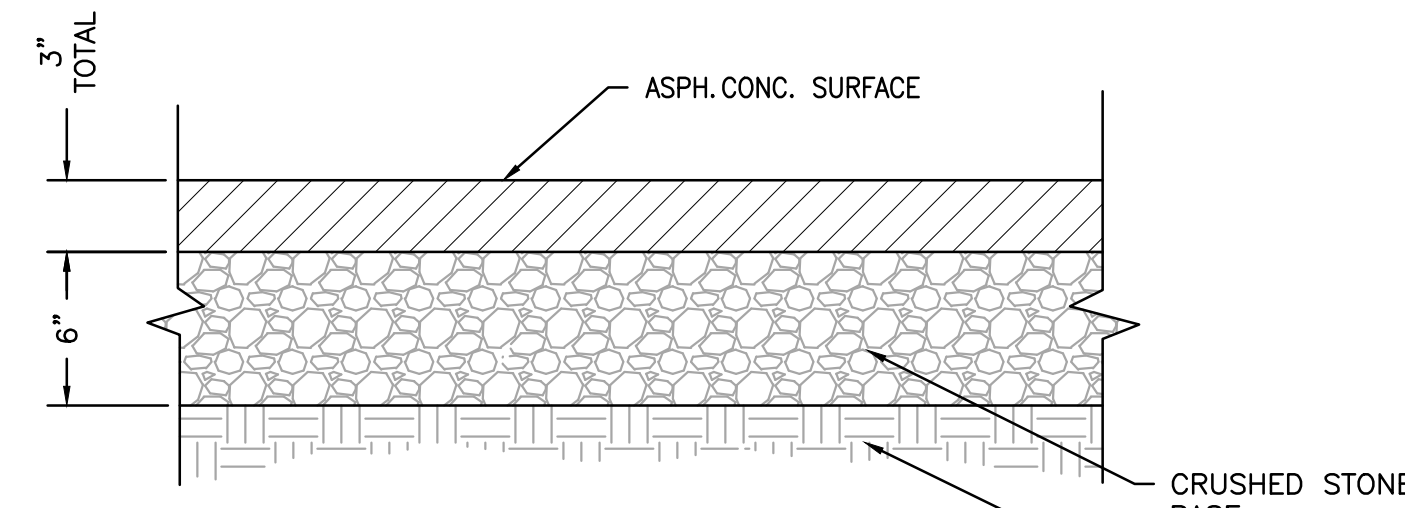


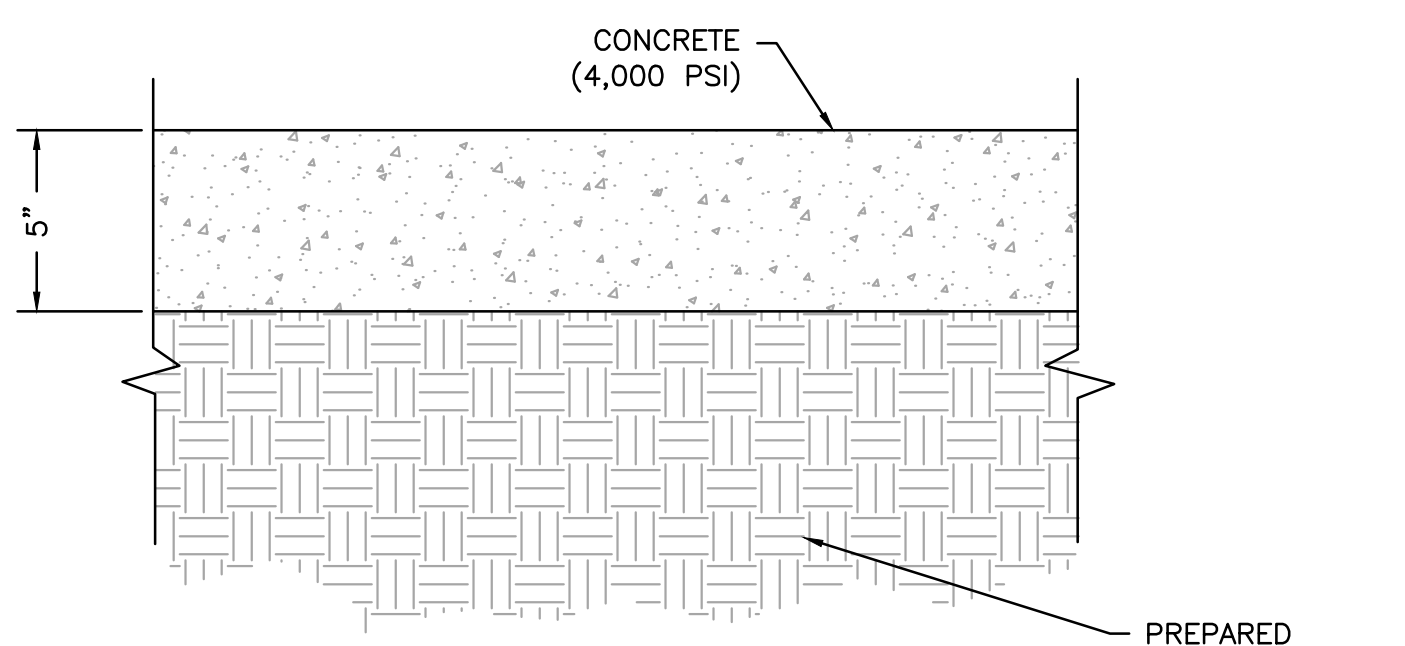
NOTE: PAVEMENT DETAILS SHOWN FOR REFERENCE ONLY. CONTRACTOR TO VERIFY FINAL PAVEMENT REQUIREMENTS WITH GEOTECH REPORT AND/OR OWNER.

1 LIGHT DUTY ASPHALT PAVEMENT DETAIL (PARKING AREAS)
SCALE: N.T.S. REF. DWG.



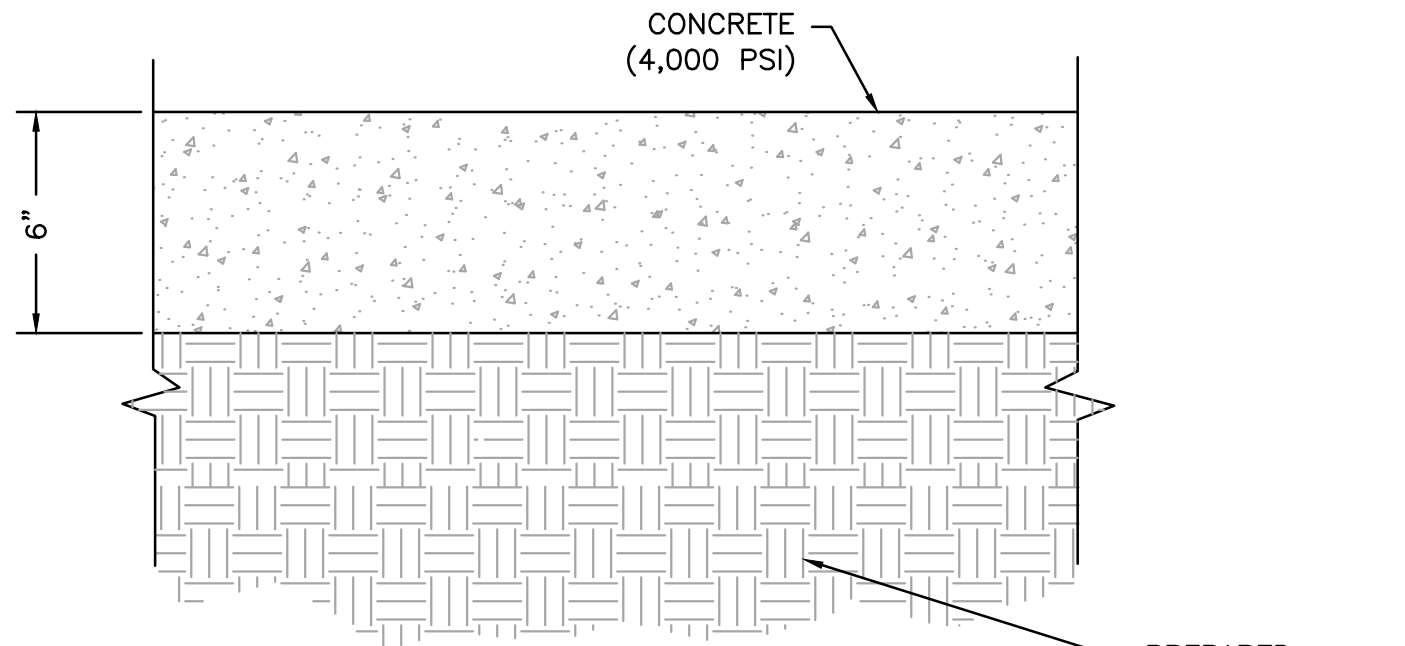
NOTE: PAVEMENT DETAILS SHOWN FOR REFERENCE ONLY. CONTRACTOR TO VERIFY FINAL PAVEMENT REQUIREMENTS WITH GEOTECH REPORT AND/OR OWNER.

2 HEAVY DUTY ASPHALT PAVEMENT DETAIL (DRIVE AND TURNING AREAS)
SCALE: N.T.S. REF. DWG.



NOTES:
1. PAVEMENT DETAILS SHOWN FOR REFERENCE ONLY. CONTRACTOR TO VERIFY FINAL PAVEMENT REQUIREMENTS WITH GEOTECH REPORT AND/OR OWNER.
2. CONTRACTOR TO INSTALL CONCRETE PAVEMENT JOINTS PER THE AMERICAN CONCRETE INSTITUTES "GUIDE FOR DESIGN AND CONSTRUCTION OF CONCRETE PARKING LOTS"

3 CONCRETE PAVEMENT DETAIL (PARKING AREAS)
SCALE: N.T.S. REF. DWG.



NOTES:
1. PAVEMENT DETAILS SHOWN FOR REFERENCE ONLY. CONTRACTOR TO VERIFY FINAL PAVEMENT REQUIREMENTS WITH GEOTECH REPORT AND/OR OWNER.
2. CONTRACTOR TO INSTALL CONCRETE PAVEMENT JOINTS PER THE AMERICAN CONCRETE INSTITUTES "GUIDE FOR DESIGN AND CONSTRUCTION OF CONCRETE PARKING LOTS"

4 CONCRETE PAVEMENT DETAIL (HEAVY TRAFFIC AREAS, DRIVE THRU)
SCALE: N.T.S. REF. DWG.

KEYED NOTES

- ALL IMPROVEMENTS ARE PARALLEL AND PERPENDICULAR TO THE EASTERN PROPERTY LINE UNLESS DIMENSIONED OTHERWISE.
- NEW STRUCTURES
- NEW POPEYES BUILDING. REFER TO ARCHITECTURAL PLANS.
- NEW DUMPSTER ENCLOSURE. REFER TO ARCHITECTURAL PLANS.
- NEW CURBS
- NEW CONCRETE CURB AND GUTTER TYPE A (CATCH). REFER TO M.A.G. DETAIL 220-1.
- NEW CONCRETE CURB AND GUTTER TYPE A (SPILL). REFER TO M.A.G. DETAIL 220-1.
- NEW PAVEMENTS
- NEW FLEXIBLE ASPHALT PAVEMENT (PARKING AREAS). REFER TO LIGHT DUTY ASPHALT AREA DETAIL.
- NEW FLEXIBLE ASPHALT PAVEMENT (MAIN DRIVES). REFER TO HEAVY DUTY ASPHALT AREA DETAIL.
- NEW RIGID CONCRETE PAVEMENT (PARKING AREAS). REFER TO LIGHT DUTY CONCRETE DETAIL.
- NEW RIGID CONCRETE PAVEMENT (DRIVE THRU LANE & TRASH ENCLOSURE). REFER TO HEAVY DUTY CONCRETE DETAIL.
- NEW DRIVEWAY WITH DETACHED SIDEWALK. REFER TO C.O.G. DETAIL G-456
- NEW SIDEWALKS
- NEW 4" CONCRETE SIDEWALK. REFER TO SIDEWALK DETAIL.
- NEW CURB RAMP TYPE A. REFER TO DETAIL SHEET.
- NEW PERPENDICULAR CURB RAMP. REFER TO M.A.G. DETAIL 238-3 ON DETAIL SHEET.
- NEW FLUSH CONCRETE SIDEWALK WITH DETECTABLE WARNING FIELD (CAST IN PLACE).
- NEW SIGNS
- NEW BOLLARD. (TYPICAL)
- NEW ACCESSIBLE PARKING SIGN.
- NEW DRIVE-THRU CLEARANCE BAR.
- NEW MENU BOARD.
- NEW SPEAKER POLE AND COVER.
- NEW ACCESSIBLE PARKING SIGN. REFER TO DETAIL SHEET.
- NEW PAVEMENT MARKINGS
- NEW PAINTED ACCESSIBLE PARKING SYMBOL. REFER TO DETAIL SHEET.
- NEW PAVEMENT STRIPING. (TYPICAL)
- NEW PAVEMENT STRIPING ACCESSIBLE CROSS WALK.
- NEW DIRECTIONAL ARROW STRIPING. (TYPICAL)
- NEW MISCELLANEOUS ITEMS
- NEW AREA LIGHT. (TYPICAL)
- NEW LANDSCAPE AREA. REFER TO LANDSCAPING PLANS.
- NEW BIKE RACK REFER TO DETAIL SHEET.
- NEW TRASH RECEPTACLE. (TYPICAL)
- TRANSFORMER PAD. REFER TO UTILITY PLAN.
- EXISTING FIRE HYDRANT. REFER TO UTILITY PLAN.
- NEW SITE SCREEN WALL. REFER TO ARCHITECTURAL PLANS.
- TURNING RADIUS. REFER TO C.O.G. 954.

PARKING CALCULATIONS

PARKING REQUIREMENTS (STANDARD)

USE CATEGORY: 1 SPACE PER 100 S.F. GROSS FLOOR AREA
 GROSS FLOOR AREA: 2,297 S.F.
 CALCULATION: (1 SPACE/100 S.F.) * (2,297 S.F.) = 22.97 SPACES

PARKING REQUIREMENTS (ACCESSIBLE)

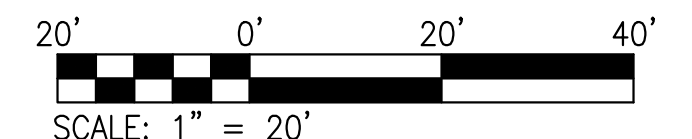
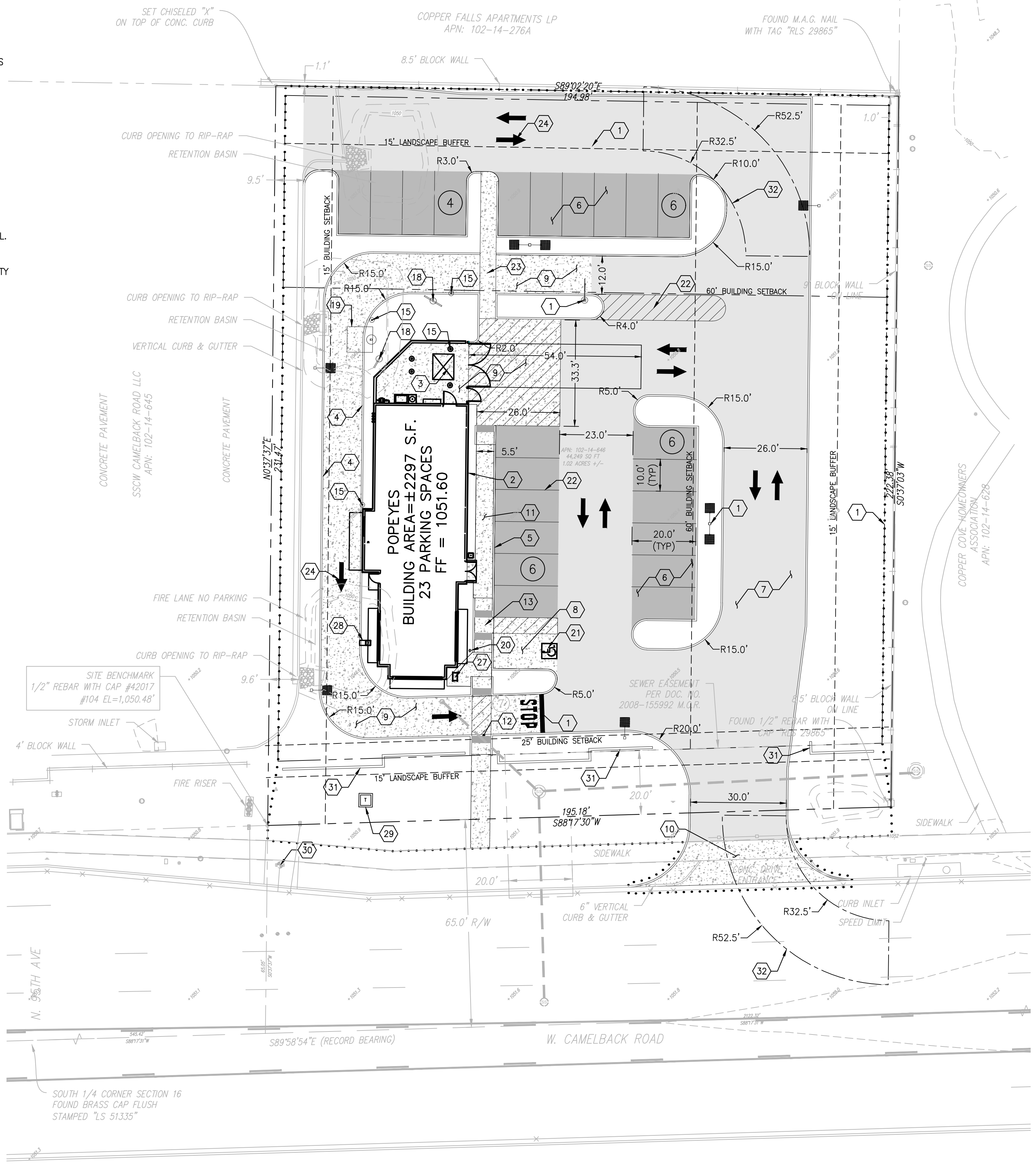
1 TO 25 STANDARD SPACES: 1 ACCESSIBLE SPACES
 VAN ACCESSIBLE REQUIREMENT: 1 VAN ACCESSIBLE SPACE FOR EVERY 6 ACCESSIBLE SPACES

PARKING DATA

SPACES REQUIRED (TOTAL): 22 SPACES
 SPACES PROVIDED (STANDARD): 22 SPACES
 SPACES PROVIDED (ACCESSIBLE): 1 SPACES (1 VAN ACCESSIBLE)
 SPACES PROVIDED (TOTAL): 23 SPACES

LEGEND

- PROPOSED CONSTRUCTION LIMITS
- PROPOSED IMPROVEMENTS
- PROPOSED SAWCUT LINE
- PROPERTY LINE
- EXISTING EASEMENT LINE
- EXISTING IMPROVEMENTS
- PROPOSED CONCRETE
- PROPOSED LIGHT DUTY ASPHALT
- PROPOSED HEAVY DUTY ASPHALT
- PROPOSED LANDSCAPING
- EXISTING FIRE HYDRANT
- EXISTING WATER VALVE
- EXISTING STORM MANHOLE
- EXISTING SANITARY MANHOLE
- EXISTING SANITARY CLEANOUT
- EXISTING LIGHT STANDARD
- PARKING COUNT
- LIGHT STANDARD



USER: William F. Cole
 DATE: February 9, 2024
 DRAWING: S:\0085\00852020\20-0052\CADD\01-P\Plan_Site_20-0052.dwg

DATE	NO	REVISION DESCRIPTION
02/10/2021	01	PRELIMINARY SUBMITTAL 1
12/28/2020	02	CONDITIONAL USE PERMIT SUBMITTAL 1
10/23/2020	01	PRELIMINARY SUBMITTAL 1
02/10/2021	04	DESIGN REVIEW SUBMITTAL 2

DEVELOPER/OWNER:
Z-HH FOODS
 4415 HIGHWAY 6
 SUGAR LAND, TX 77478
 (713) 776-1616



POPEYES GLENDALE, AZ
 9400 W CAMELBACK ROAD
 GLENDALE, ARIZONA 85305

COLE
 CIVIL ENGINEERING / SURVEYING / PLANNING / LANDSCAPE ARCHITECTURE
 1520 S. Fifth Street
 Suite 307
 St. Charles, MO 63033
 636.767.2387
 636.767.2387 FAX

DRAWN BY	WF
CHECKED BY	WF
DRAWING SCALE	AS SHOWN
DATE	02/10/2021
Job Number	20-0052
Sheet Number	C3.0