



**TAKE 5 CAR WASH/TAKE 5 RETAIL
PAD AMENDMENT**

City of Glendale Received 1-12-2022

January 12th, 2022

Ms. Christina Lavelle, Sr Planner
City of Glendale
Development Services/Planning Division
5850 W Glendale Ave
Glendale, AZ 85301

RE: TAKE 5 CAR WASH PAD AMENDMENT
NWC 83rd Avenue and Camelback Rd
Glendale, AZ

Dear Christina:

As discussed we have put together a Decibel Level Exhibit based on National Studies previously conducted.

Noise Travels in a straight line and said exhibit delineates as such with point of origin being inside tunnel at Blowers. Attached exhibit provides Benchmark points to each direction throughout our specific Site with Distances and Estimated Decibel Levels based on existing Site Conditions, again based on National Studies previously conducted.

We have also provided Decibel Range Chart providing typical Noise Sources utilized for reference and comparison to Decibels found in our exhibit

Note: All of the proposed Blowers are located completely inside the Tunnel Building. Our Vendor provides Silencers which are intended to be used at this location.

We appreciate the opportunity to provide said decibel exhibit
Please do not hesitate to contact us if you should have any questions and/or need any additional clarifications or supplement information.

Respectfully,



83RD AND
102-11-943 CAMELBACK RETAIL
 MCR: 1497-01

**Table 1. Sonny's Dryer Blower Silencers
 Acoustical Test**

Sonny's Car Wash Blower and Silencer Noise Measurement Tests 10/3/18

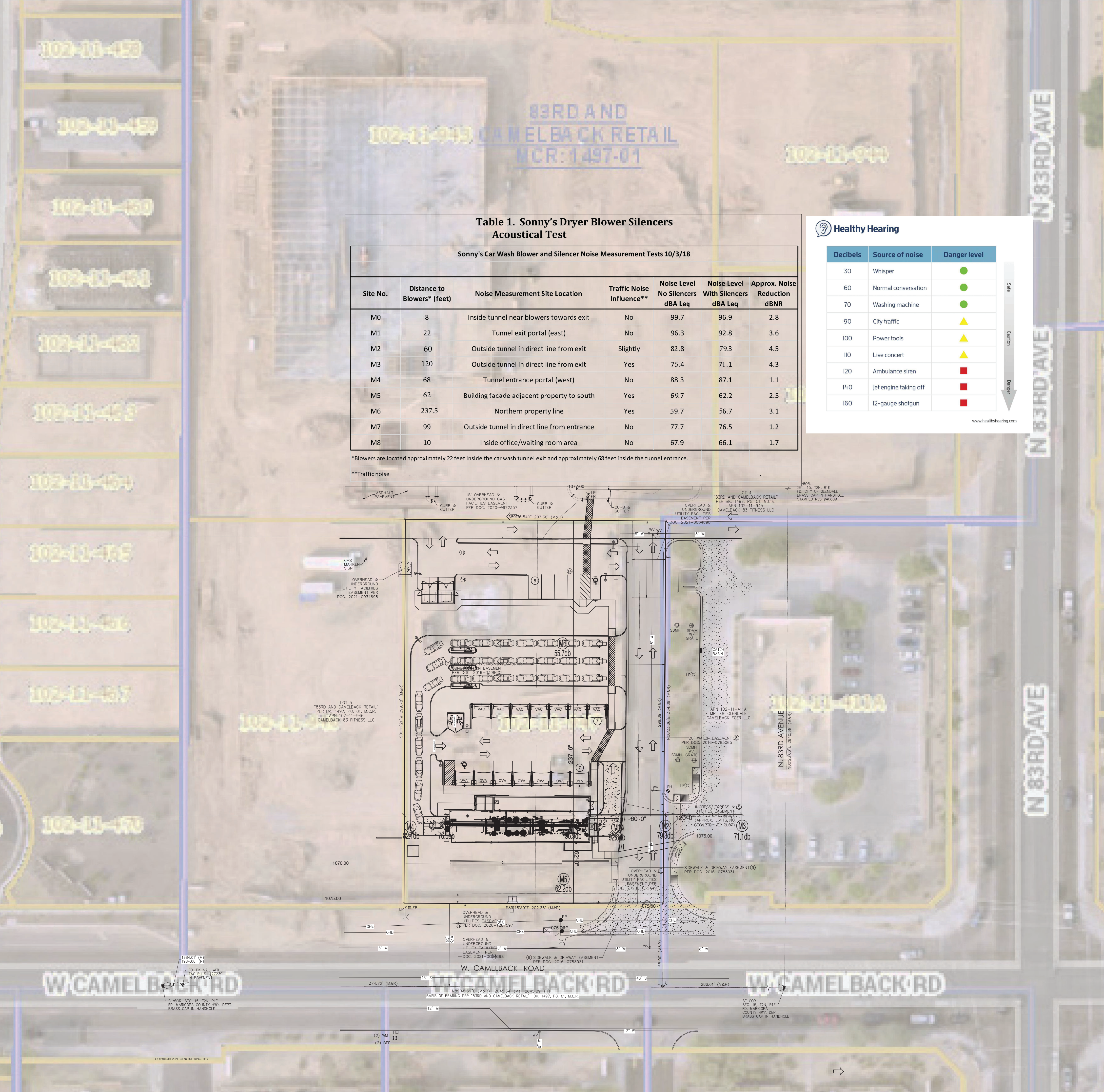
Site No.	Distance to Blowers* (feet)	Noise Measurement Site Location	Traffic Noise Influence**	Noise Level No Silencers dBA Leq	Noise Level With Silencers dBA Leq	Approx. Noise Reduction dBNR
M0	8	Inside tunnel near blowers towards exit	No	99.7	96.9	2.8
M1	22	Tunnel exit portal (east)	No	96.3	92.8	3.6
M2	60	Outside tunnel in direct line from exit	Slightly	82.8	79.3	4.5
M3	120	Outside tunnel in direct line from exit	Yes	75.4	71.1	4.3
M4	68	Tunnel entrance portal (west)	No	88.3	87.1	1.1
M5	62	Building facade adjacent property to south	Yes	69.7	62.2	2.5
M6	237.5	Northern property line	Yes	59.7	56.7	3.1
M7	99	Outside tunnel in direct line from entrance	No	77.7	76.5	1.2
M8	10	Inside office/waiting room area	No	67.9	66.1	1.7

*Blowers are located approximately 22 feet inside the car wash tunnel exit and approximately 68 feet inside the tunnel entrance.
 **Traffic noise

Healthy Hearing

Decibels	Source of noise	Danger level
30	Whisper	Safe
60	Normal conversation	Safe
70	Washing machine	Safe
90	City traffic	Caution
100	Power tools	Caution
110	Live concert	Caution
120	Ambulance siren	Danger
140	Jet engine taking off	Danger
160	12-gauge shotgun	Danger

www.healthyhearing.com



1984.01 (W)
 1984.06 (W)
 (2) 1/2" DIA. WITH
 FAC. B. 51 827239
 IN PAVEMENT

1884839761 (M8) 2845.34 (M) 2845.39 (M)
 BASIS OF BEARING "83RD AND CAMELBACK RETAIL" BK. 1497, PG. 01, M.C.R.

SE COR.
 SEC. 15, T2N, R1E
 FD. MARICOPA COUNTY INTY. DEPT.
 COUNTY WPA DEPT.
 BRASS CAP IN HANDHOLE