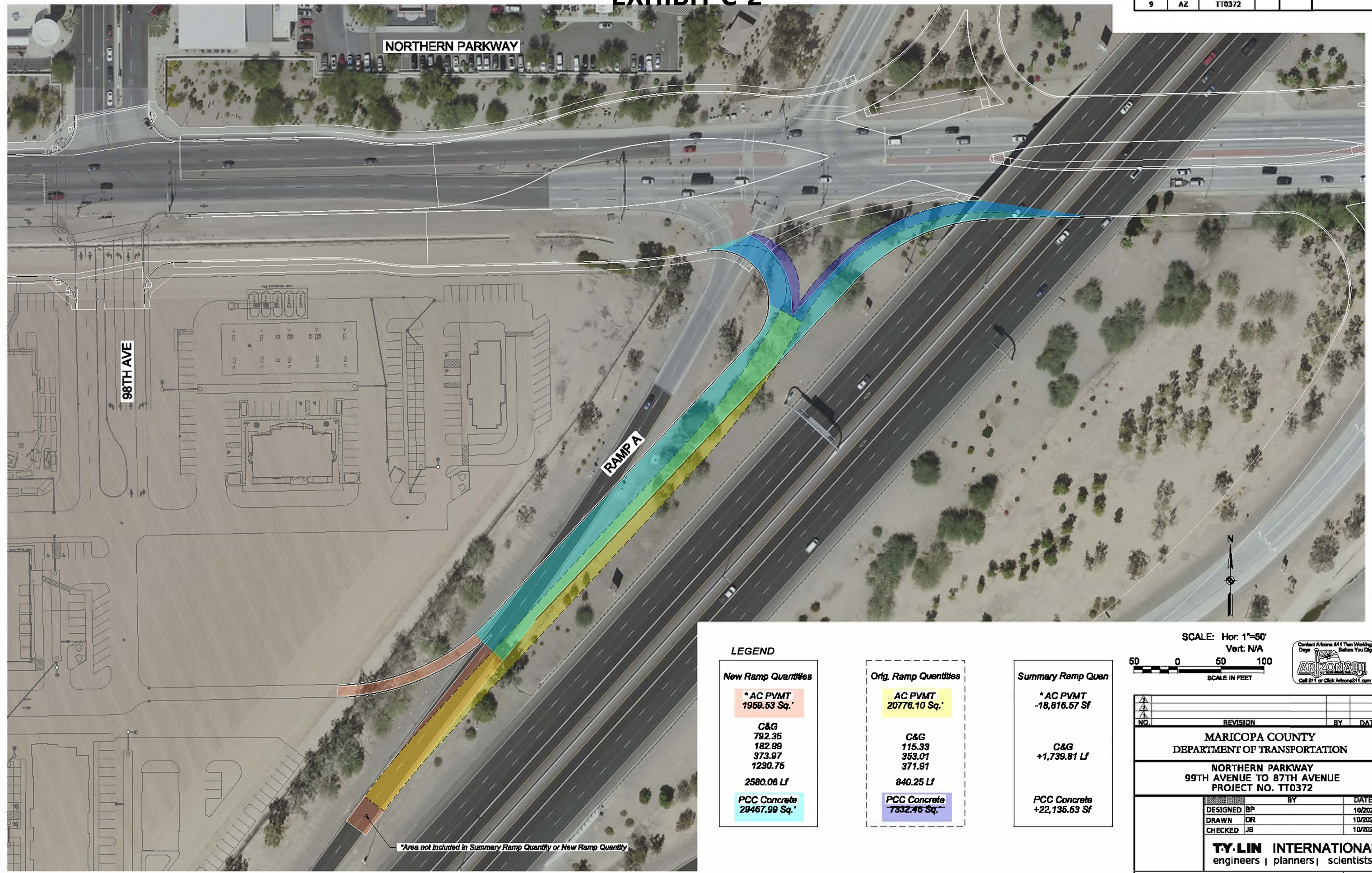


EXHIBIT C-2

F.H.W.A. REGION	STATE	PROJECT NO.	SHEET NO.	TOTAL SHEETS	RECORD DRAWING
9	AZ	TT0372			

M:\DOT\TYLIN\HALF_PRINT\04 TYLIN_GM_half_print.dwg
 10/4/2021 1:15:48 PM
 QueryRoadDesign\m...
 Dennis Ray
 rcbm1014-pw14@arizona.gov
 10/4/2021 1:15:48 PM
 M:\DOT\TYLIN\HALF_PRINT\04 TYLIN_GM_half_print.dwg



LEGEND

New Ramp Quantities

* AC PVMT 1959.53 Sq.'
C&G 792.35 182.89 373.97 1230.75 2580.08 Lf
PCC Concrete 29467.99 Sq.'

Orig. Ramp Quantities

AC PVMT 20776.10 Sq.'
C&G 115.33 353.01 371.91 840.25 Lf
PCC Concrete 7332.46 Sq.'

Summary Ramp Quant

* AC PVMT -18,816.57 Sf
C&G +1,739.81 Lf
PCC Concrete +22,135.53 Sf

*Area not included in Summary Ramp Quantity or New Ramp Quantity

SCALE: Hor: 1"=50'
Vert: N/A



NO.	REVISION	BY	DATE
MARICOPA COUNTY DEPARTMENT OF TRANSPORTATION			
NORTHERN PARKWAY 99TH AVENUE TO 87TH AVENUE PROJECT NO. TT0372			
DESIGNED	BP	DATE	10/2021
DRAWN	DR	DATE	10/2021
CHECKED	JB	DATE	10/2021
TY LIN INTERNATIONAL engineers planners scientists			
Ramp A - Quantity Evaluation Coordination Exhibit			SHEET 1 of 1
TRACS NO.			