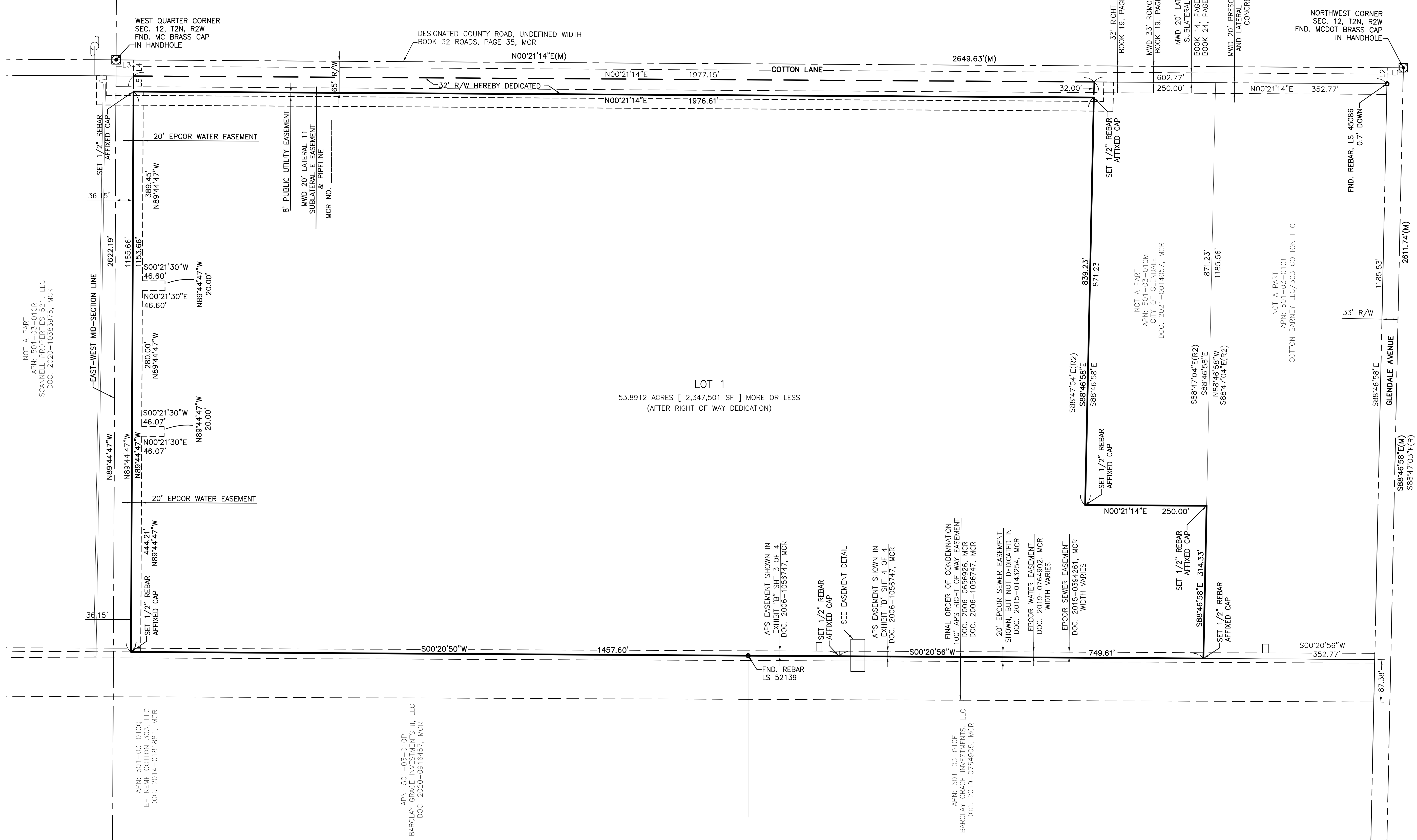




# A FINAL PLAT OF COTTON LANE DISTRIBUTION CENTER

LOCATED IN THE NORTHWEST QUARTER OF SECTION 12, TOWNSHIP 02 NORTH, RANGE 02 WEST OF THE GILA AND SALT RIVER BASE AND MERIDIAN, MARICOPA COUNTY, ARIZONA



NOT A PART  
APN: 501-03-010R  
SCANNELL PROPERTIES 521, LLC  
DOC. 2020-10383975, MCR

APN: 501-03-0100  
EH KEW COTTON 303, LLC  
DOC. 2014-0181881, MCR

APN: 501-03-010P  
BARCLAY GRACE INVESTMENTS II, LLC  
DOC. 2020-0916457, MCR

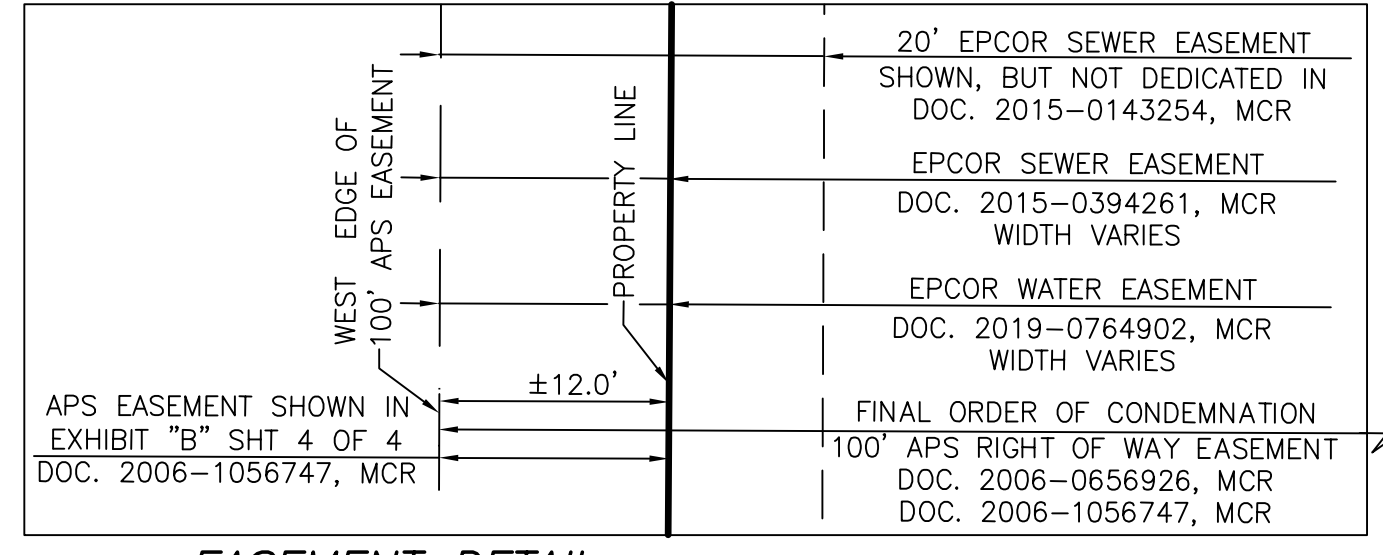
APN: 501-03-010E  
BARCLAY GRACE INVESTMENTS, LLC  
DOC. 2019-0764905, MCR

NOT A PART  
APN: 501-03-010M  
CITY OF GLENDALE  
DOC. 2021-0014057, MCR

NOT A PART  
APN: 501-03-010T  
COTTON BARNEY LLC/303 COTTON LLC

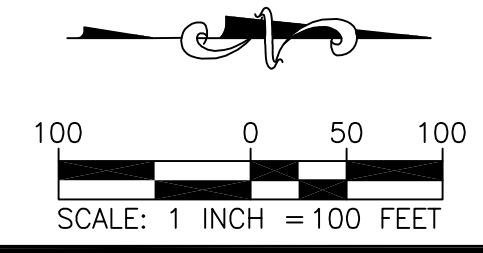
## LEGEND

- SECTION LINE
- MONUMENT LINE
- PROPERTY LINE
- OTHERS PROPERTY LINE
- EASEMENT
- BRASS CAP IN HANDHOLE
- BRASS CAP (OR AS NOTED)
- REBAR (AS NOTED)
- FND. FOUND
- MCR MARICOPA COUNTY RECORDER
- PUE PUBLIC UTILITY EASEMENT
- R/W RIGHT OF WAY
- (C) CALCULATED BEARINGS/DISTANCES
- (M) MEASURED BEARINGS/DISTANCES
- (R#) RECORDED BEARINGS/DISTANCES



EASEMENT DETAIL  
NOT TO SCALE

LINE	BEARING	DISTANCE
L1	S00°21'14"W	33.00'
L2	S88°46'58"E	33.00'
L3	N00°21'14"E	36.15'
L4	S89°44'47"E	33.00'
L5	S89°44'47"E	32.00'



BARNETT LAND SURVEYING, LLC  
201 WEST STANFORD AVENUE  
GILBERT, ARIZONA 85233  
PHONE: (602) 510-7797  
E-MAIL: SHANE@BARNETTSURVEY.COM

JOB NO: LS20-0806  
DRAWN BY: SRB  
REVIEW BY: SRB

A FINAL PLAT OF  
COTTON LANE DISTRIBUTION CENTER

DATE: 12/15/2021 REV: - SHEET: 2 OF 2