



Northern Parkway Commerce  
Annexation Request AN-241  
**Blank Petition**

City Council Voting Meeting, August 23, 2022





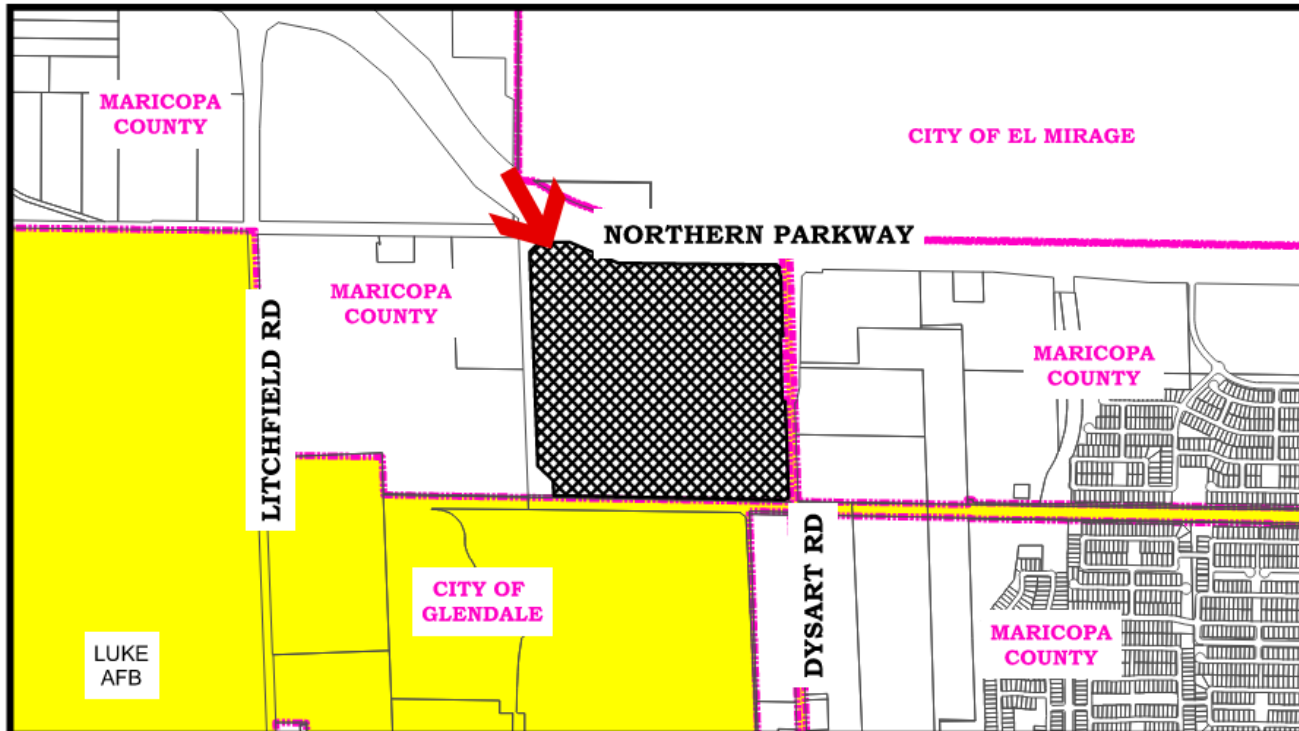
# Annexation Request

---

- Northern is an approximately 133-acre parcel located at the southwest corner of Dysart Road and Northern Parkway.
- County jurisdiction zoning is RU-43.
- Proposal is to annex and rezone property to PAD for an Industrial and Manufacturing development.






# Annexation Map



## NORTHERN PARKWAY COMMERCE CENTER ANNEXATION (AN-241)

PROPOSED ANNEXATION OF APPROXIMATELY  
133 ACRES AT 7510 N. DYSART RD.

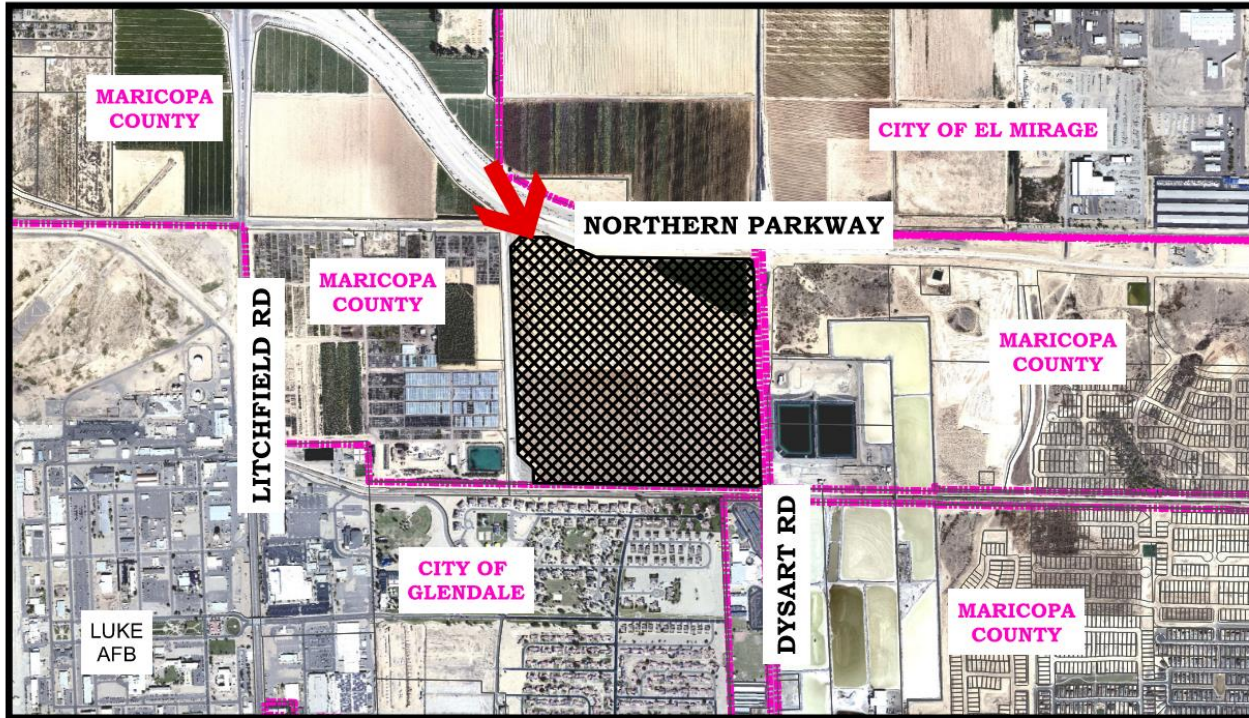


-  Glendale City Boundaries
-  City of Glendale
-  Proposed Annexation







# Aerial Map



Aerial Date: October 2020

## **NORTHERN PARKWAY COMMERCE CENTER ANNEXATION (AN-241)**

**PROPOSED ANNEXATION OF APPROXIMATELY  
133 ACRES AT 7510 N. DYSART RD.**

-  Glendale City Boundaries
-  Proposed Annexation





Northern Parkway Commerce  
Annexation Request AN-241  
**Blank Petition**

City Council Voting Meeting, August 23, 2022

