



Cotton 303 Industrial PAD **AN240 Blank Petition**

City Council Public Hearing - September 27, 2022



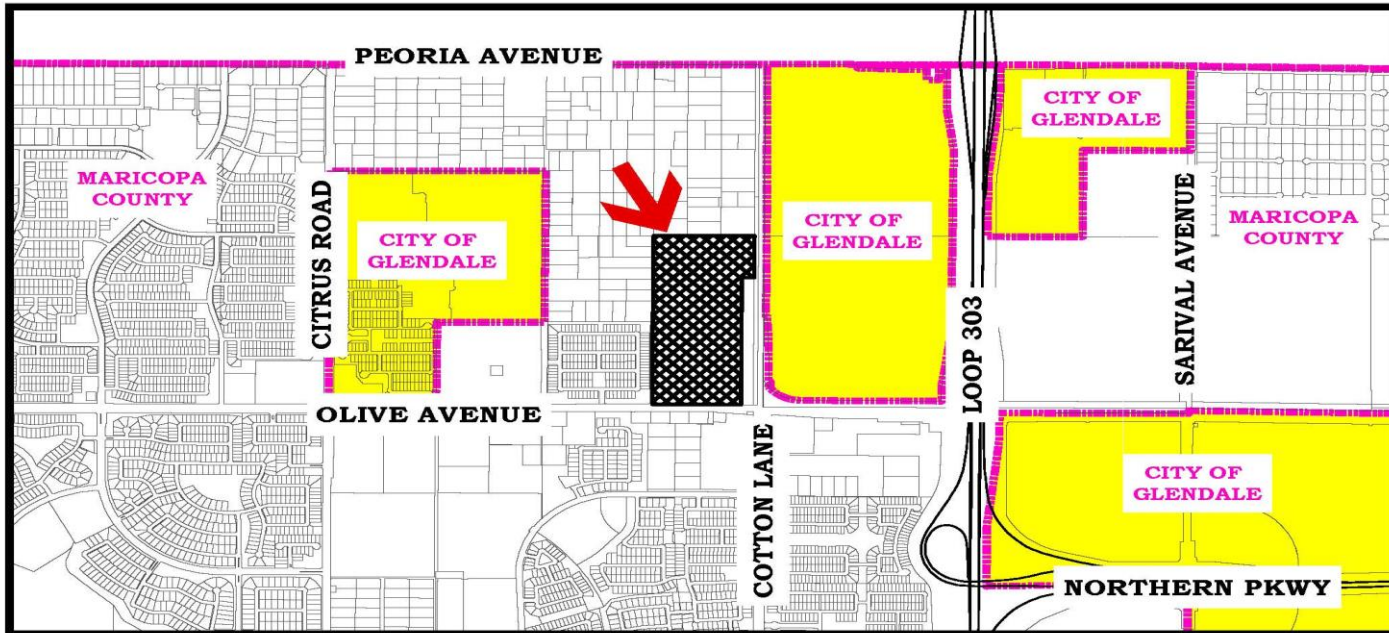


Annexation Information

- ❖ Cotton 303 Industrial is a 64.09-acre parcel located NEC 173rd Avenue and Olive Ave.
- ❖ County jurisdiction zoning: RU-43.
General Plan designation: LDR-2.5.
- ❖ Proposal: Minor General Plan Amendment to RMU; and rezone to PAD
- ❖ 1 million sq.ft. Industrial project.






Annexation Map



COTTON 303 ANNEXATION (AN-240)

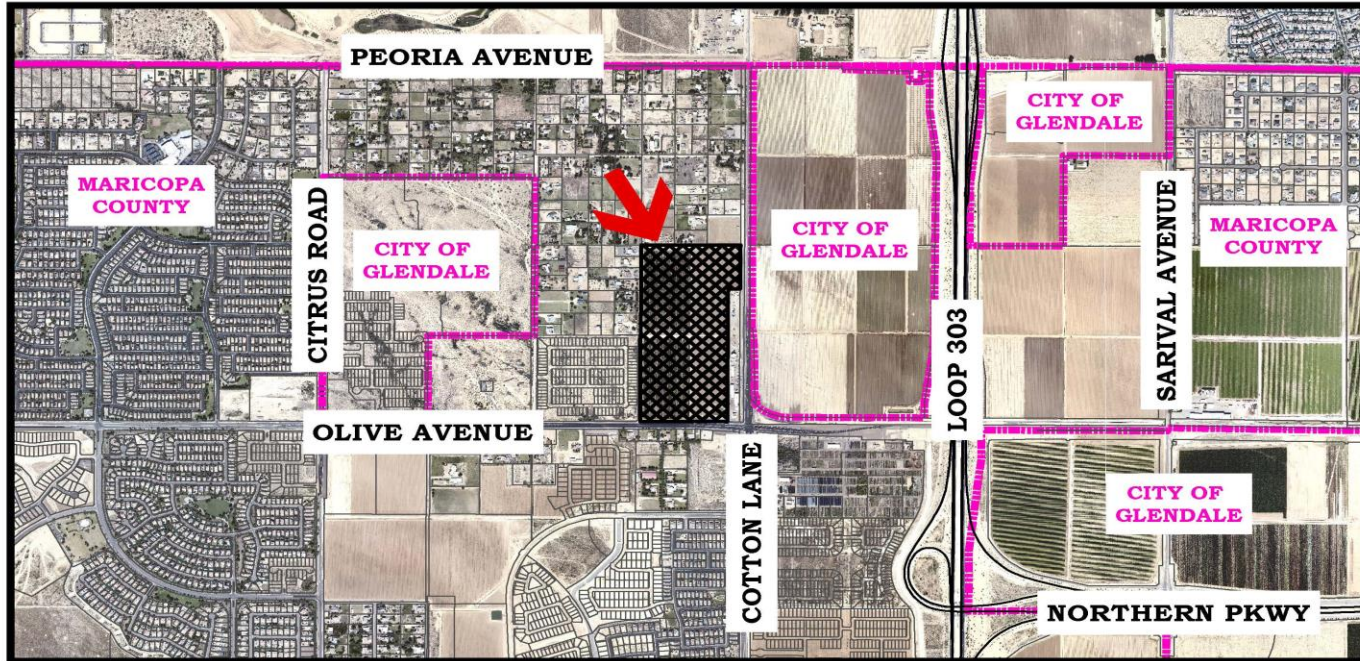
**PROPOSED ANNEXATION OF APPROXIMATELY 64.09 ACRES
AT THE NEC OF 173RD AVENUE & OLIVE AVENUE.**

-  Glendale City Boundaries
-  City of Glendale
-  Proposed Annexation







Aerial Map



Aerial Date: October 2020

COTTON 303 ANNEXATION (AN-240) PROPOSED ANNEXATION OF APPROXIMATELY 64.09 ACRES AT THE NEC OF 173RD AVENUE & OLIVE AVENUE.



-  Glendale City Boundaries
-  Proposed Annexation





Cotton 303 Industrial PAD **AN240 Blank Petition**

City Council Public Hearing - September 27, 2022

