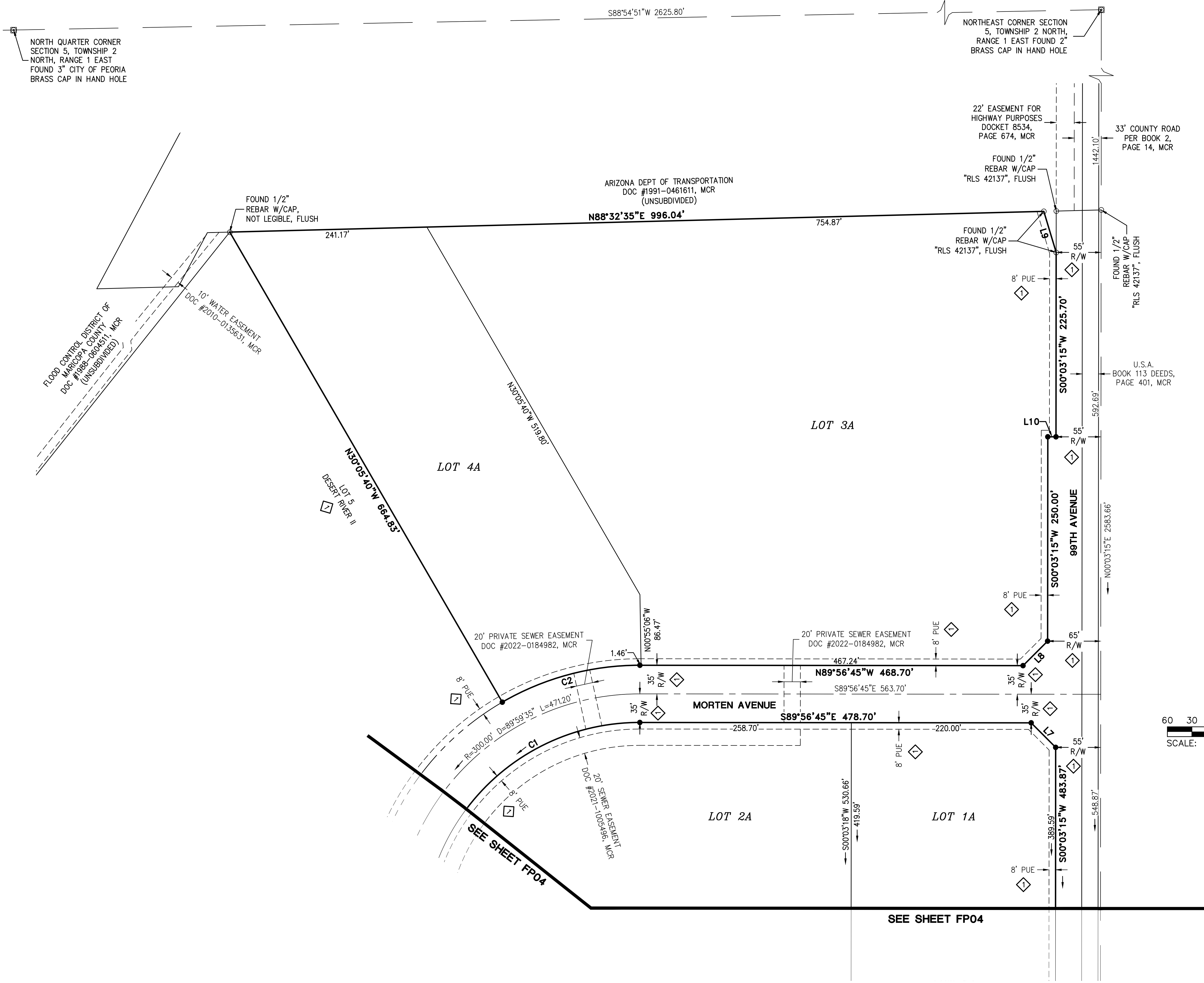


DESERT RIVER II - AMENDED
 99TH AVENUE & MORTEN AVENUE
 GLENDALE, ARIZONA
FINAL PLAT

PROJ. NO.: 1217	STATUS:
DATE: JUNE 2023	MUNICIPAL TRACKING NO.:
SCALE: AS SHOWN	DRAWN: GS
APPROVED: BJB	

DWG. NO.
FP02
 SHT. 2 OF 4



LEGEND

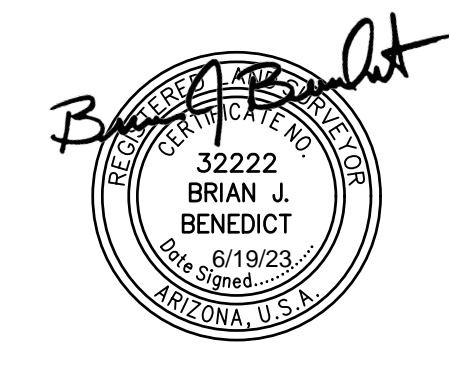
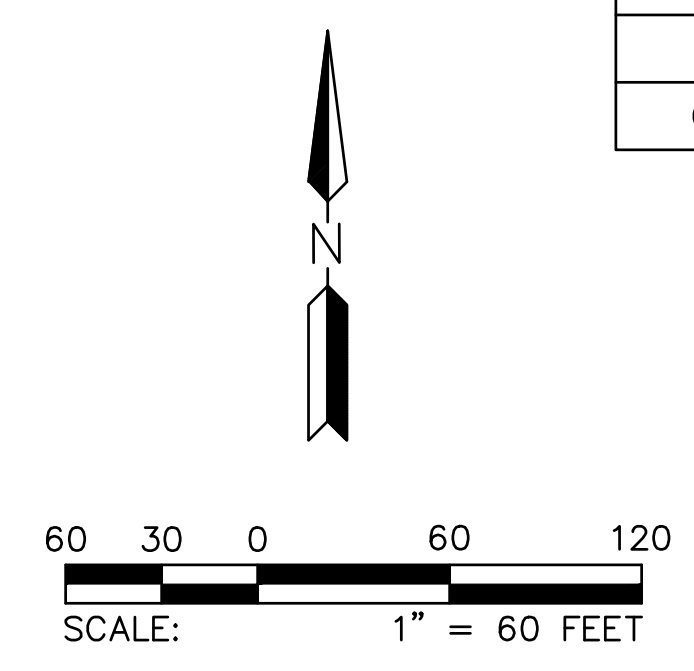
- FOUND MONUMENT AS NOTED
- ⊗ FOUND BRASS CAP IN HAND HOLE
- ⊙ FOUND BRASS CAP FLUSH
- SET 1/2" REBAR W/ CAP, RLS 32222 OR AS NOTED
- BOUNDARY LINE
- - - SECTION LINE
- - - CENTER LINE
- - - RIGHT OF WAY
- - - PARCEL LINE
- - - EASEMENT LINE
- - - RIGHT-OF-WAY
- R/W MARICOPA COUNTY RECORDS
- MCR REGISTERED LAND SURVEYOR
- RLS UNITED STATES OF AMERICA
- U.S.A. BOOK 1619, PAGE 3, MCR

LINE TABLE

LINE NO.	DIRECTION	LENGTH
L7	S44°56'45"E	42.43'
L8	S45°03'15"W	42.43'
L9	S16°46'06"E	52.39'
L10	N89°56'45"W	10.00'

CURVE TABLE

CURVE NO.	RADIUS	DELTA	LENGTH
C1	265.00'	89°59'35"	416.23'
C2	335.00'	30°08'55"	176.27'



STATUS: _____

PROJ. NO.: 1217

DATE: JUNE 2023

SCALE: AS SHOWN

DRAWN: GS

APPROVED: BJB

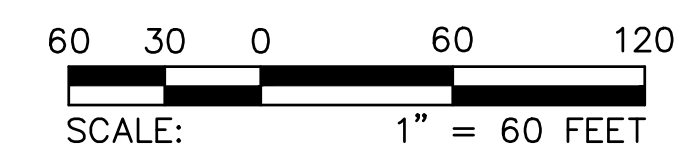
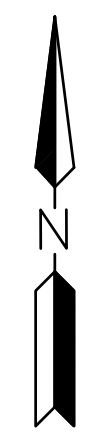
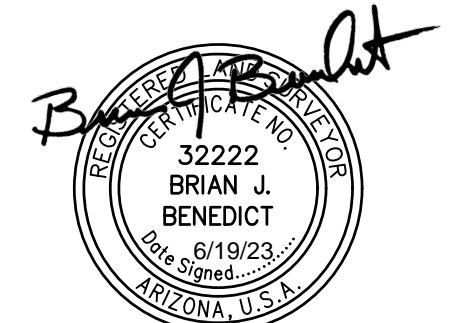
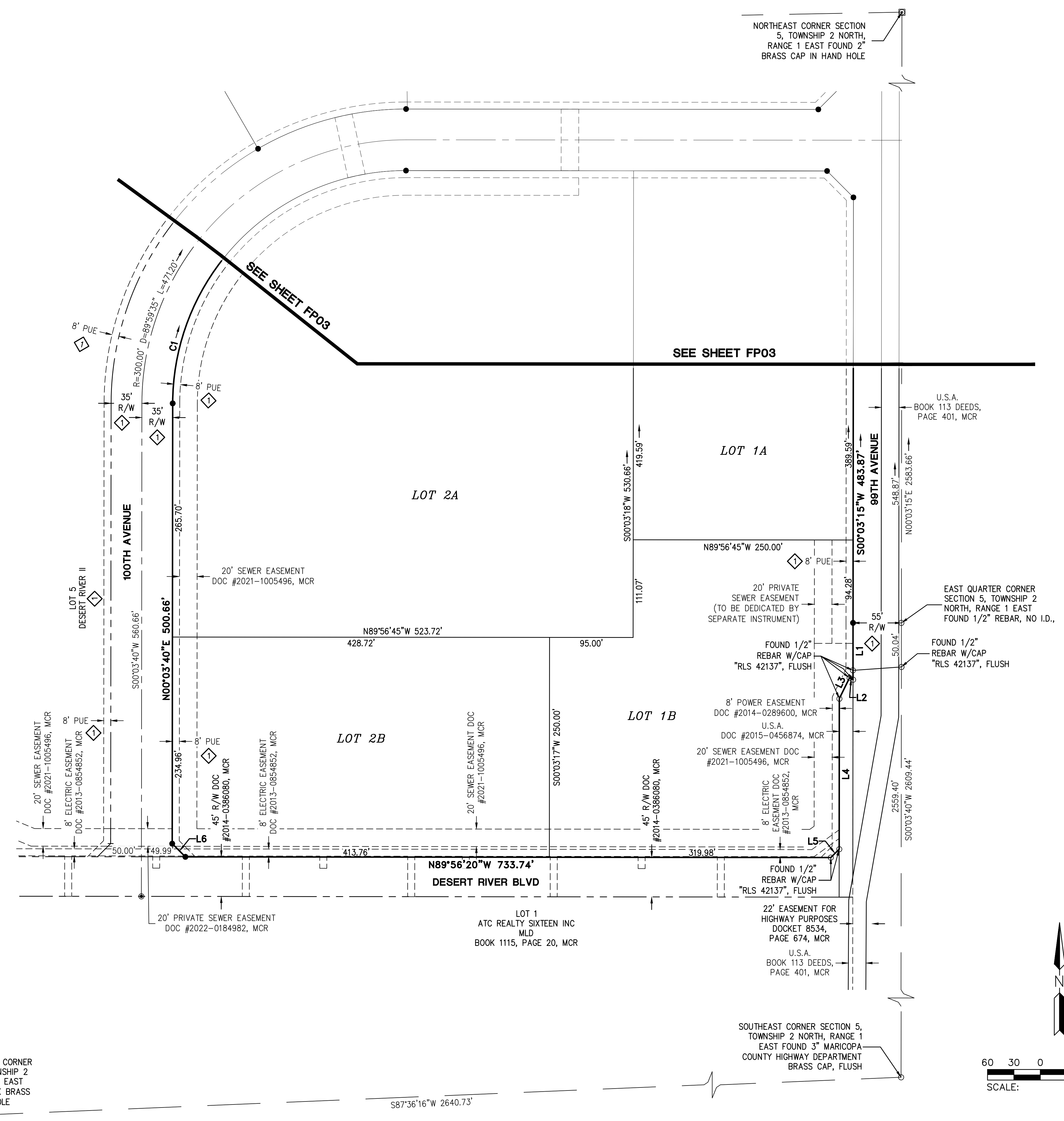
MUNICIPAL TRACKING NO: _____

LEGEND

- FOUND MONUMENT AS NOTED
- ⊗ FOUND BRASS CAP IN HAND HOLE
- ⊙ FOUND BRASS CAP FLUSH
- SET 1/2" REBAR W/ CAP, RLS 32222 OR AS NOTED
- BOUNDARY LINE
- - - SECTION LINE
- - - CENTER LINE
- - - RIGHT OF WAY
- - - PARCEL LINE
- - - EASEMENT LINE
- - - RIGHT-OF-WAY
- R/W MARICOPA COUNTY RECORDS
- MCR REGISTERED LAND SURVEYOR
- RLS UNITED STATES OF AMERICA
- U.S.A. BOOK 1619, PAGE 3, MCR

LINE TABLE		
LINE NO.	DIRECTION	LENGTH
L1	S00°03'40"W	64.51'
L2	N63°56'20"W	4.44'
L3	S26°03'40"W	26.25'
L4	S00°03'40"W	171.18'
L5	S45°03'40"W	13.44'
L6	N44°56'20"W	21.19'

CURVE TABLE			
CURVE NO.	RADIUS	DELTA	LENGTH
C1	265.00'	89°59'35"	416.23'



SOUTH QUARTER CORNER SECTION 5, TOWNSHIP 2 NORTH, RANGE 1 EAST FOUND 3" BLANK BRASS CAP IN HAND HOLE

SOUTHEAST CORNER SECTION 5, TOWNSHIP 2 NORTH, RANGE 1 EAST FOUND 3" MARICOPA COUNTY HIGHWAY DEPARTMENT BRASS CAP, FLUSH

U.S.A. BOOK 113 DEEDS, PAGE 401, MCR

EAST QUARTER CORNER SECTION 5, TOWNSHIP 2 NORTH, RANGE 1 EAST FOUND 1/2" REBAR, NO I.D.,

LOT 1 ATC REALTY SIXTEEN INC MLD BOOK 1115, PAGE 20, MCR

U.S.A. BOOK 113 DEEDS, PAGE 401, MCR

20' PRIVATE SEWER EASEMENT DOC #2022-0184982, MCR

20' SEWER EASEMENT DOC #2021-1005496, MCR

8' POWER EASEMENT DOC #2014-0289600, MCR

FOUND 1/2" REBAR W/CAP "RLS 42137", FLUSH

20' PRIVATE SEWER EASEMENT (TO BE DEDICATED BY SEPARATE INSTRUMENT)

N89°56'45"W 250.00'

LOT 1A

LOT 2A

LOT 2B

LOT 1B

SEE SHEET FP03

SEE SHEET FP03

S87°36'16"W 2640.73'

N00°03'40"E 500.66'

100TH AVENUE

8' PUE

35' R/W

35' R/W

35' R/W

35' R/W

35' R/W

35' R/W

35' R/W

35' R/W

35' R/W

35' R/W

35' R/W

35' R/W

35' R/W

35' R/W