



Update #14: Downtown Campus Reinvestment Project

City Council Workshop

August 22, 2023

Presenter: Kevin Phelps





Continuity of Operations



Airport



Adult Center



Civic Center Campus



Sine Bldg.



GRPSTC



Media Center

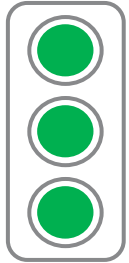


Continuity of Operations Status

	Planning	Design	Construction	*Move In
Sine Building – Mar. '22 thru Dec.'22				Jan.
Media Center – June '22 thru June '23				*July
Adult Center – May '22 thru April '23				*May-June
GRPSTC – May '22 thru Dec. '22				Dec. 22
Airport – May '22 thru Dec. '22				Dec.22
Bead Museum – Aug. '22 thru Aug. '23				*Aug.
Annex – Aug. '22 thru Aug. '23				*Aug.



Media Center



Budget

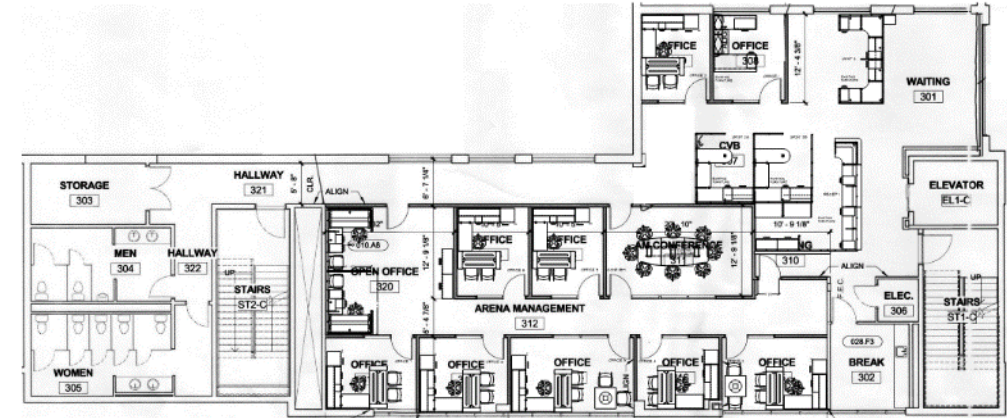
\$415,450

Scope

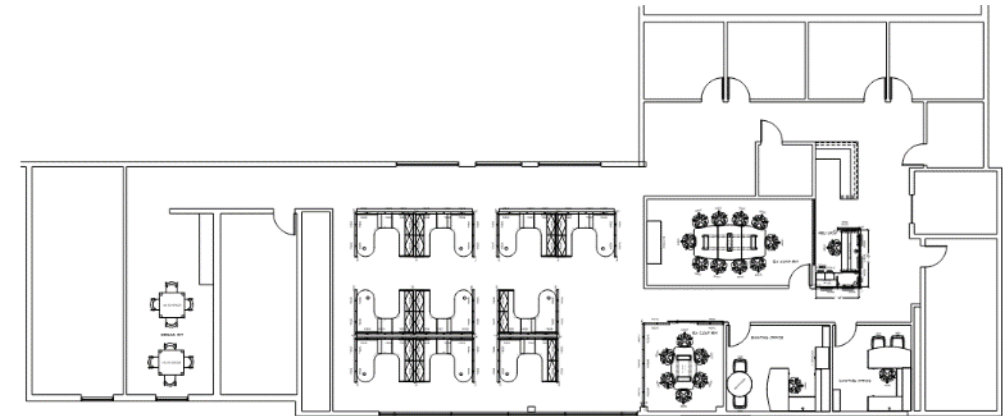
Minor tenant improvements

Schedule

Complete



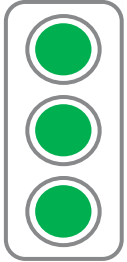
Level 3



Level 2



Bead Museum



Budget

\$1,122,100

Revised Feb. 14: \$2,360,700

Scope

Remodel / T.I.

Schedule

Complete





Bead Museum



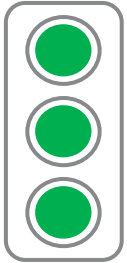


Bead Museum





Annex



Budget

\$494,850

Revised Feb. 14: \$839,300

Scope

T.I. to meeting room & furniture

Schedule

Complete







Next Steps

- Complete Moves - August
- DCRP Exterior Update – September/October
- Demolition/Long Lead GMP2 Package -October



THANK YOU