

ORDINANCE NO. O23-44

AN ORDINANCE OF THE COUNCIL OF THE CITY OF GLENDALE, MARICOPA COUNTY, ARIZONA, EXTENDING AND INCREASING THE CORPORATE LIMITS OF THE CITY OF GLENDALE, MARICOPA COUNTY, STATE OF ARIZONA, PURSUANT TO THE PROVISIONS OF TITLE 9, CHAPTER 4, SECTION 9-471, ARIZONA REVISED STATUTES AND ITS AMENDMENTS, BY ANNEXING CERTAIN TERRITORY LOCATED ON 99th AVENUE BETWEEN CAMELBACK ROAD AND BETHANY HOME ROAD IN THE CITY OF GLENDALE CONSISTING OF 3.57 ACRES TO BE KNOWN AS ANNEXATION AREA NO. 258: PROVIDING FOR AN EFFECTIVE DATE; AND ORDERING THAT A CERTIFIED COPY OF THIS ORDINANCE IS RECORDED.

WHEREAS, the City of Glendale and Maricopa County have entered into an Intergovernmental Agreement C-64-18-084-M-00 (IGA) for the exchange of roadways; and

WHEREAS, per the IGA, the City of Glendale is to annex portions of 99th Avenue right-of-way; and

WHEREAS, A.R.S. § 9-471(O) provides a method for the annexation of county right-of-way or roadway with no taxable real property included in the annexation area.

BE IT ORDAINED BY THE COUNCIL OF THE CITY OF GLENDALE as follows:

SECTION 1. The corporate limits of the City of Glendale are extended and increased, pursuant to the provisions of Title 9, Chapter 4, Section 9-471, Arizona Revised Statutes, by annexing certain territory contiguous to the existing city limits of the City of Glendale to be known as “Annexation Area No. AN-258”, and legally described in Exhibit A attached to this ordinance.

SECTION 2. A copy of this ordinance together with an accurate map of the territory annexed into the City of Glendale, attached as Exhibit A, shall be filed with the Maricopa County Board of Supervisors with a request that the Board of Supervisors set a hearing date as set forth in A.R.S. § 9-471(O).

SECTION 3. This ordinance becomes effective at the time the Maricopa County Board of Supervisors orders the annexation and it is certified by the Clerk of the Board and the order is filed for record in the Maricopa County Recorder’s Office

SECTION 4. The City Clerk is accordingly instructed and authorized to forward a certified copy of this ordinance for recording to the Maricopa County Recorder’s Office.

PASSED, ADOPTED AND APPROVED by the Mayor and Council of the City of Glendale, Maricopa County, Arizona, this 10th day of October, 2023.

Mayor Jerry P. Weiers

ATTEST:

Julie K. Bower, City Clerk (SEAL)

APPROVED AS TO FORM:

Michael D. Bailey, City Attorney

REVIEWED BY:

Kevin R. Phelps, City Manager

EXHIBIT "A"
LEGAL DESCRIPTION
FOR
ANNEXATION
99TH AVENUE BETWEEN CAMELBACK ROAD & BETHANY HOME ROAD

A PARCEL OF LAND SITUATED IN A PART OF THE EAST HALF OF SECTION 17 AND THE SOUTHWEST QUARTER OF SECTION 16, TOWNSHIP 2 NORTH, RANGE 1 EAST OF THE GILA AND SALT RIVER MERIDIAN, MARICOPA COUNTY, ARIZONA, MORE PARTICULARLY DESCRIBED AS FOLLOWS:

COMMENCING AT THE SOUTHEAST CORNER OF SAID SECTION 17, FROM WHICH THE EAST QUARTER CORNER OF SAID SECTION 17, BEARS NORTH 00 DEGREES 53 MINUTES 15 SECONDS EAST, A DISTANCE OF 2640.06 FEET;

THENCE UPON AND WITH THE EAST LINE OF THE SOUTHEAST QUARTER OF SAID SECTION 17, NORTH 00 DEGREES 53 MINUTES 15 SECONDS EAST, A DISTANCE OF 70.00 FEET TO A POINT 70.00 FEET NORTH OF AND PARALLEL TO THE SOUTH LINE OF SAID SOUTHEAST QUARTER, SAID POINT ALSO BEING THE COMMON JURISDICTION CORNER OF THE CITY OF GLENDALE AND THE COUNTY OF MARICOPA, ALSO BEING THE POINT OF BEGINNING;

THENCE UPON AND WITH SAID PARALLEL LINE, SOUTH 89 DEGREES 41 MINUTES 35 SECONDS WEST, A DISTANCE OF 33.01 FEET TO THE COMMON JURISDICTION CORNER BETWEEN THE COUNTY OF MARICOPA, THE CITY OF GLENDALE AND THE CITY OF PHOENIX;

THENCE UPON AND WITH THE COMMON JURISDICTION LINE BETWEEN THE COUNTY OF MARICOPA AND THE CITY OF PHOENIX, NORTH 00 DEGREES 53 MINUTES 15 SECONDS EAST, A DISTANCE OF 1642.08 FEET TO A POINT ON THE BACK OF CURB ALSO BEING THE BEGINNING OF A NON-TANGENT CURVE TO THE LEFT HAVING A RADIAL BEARING OF NORTH 31 DEGREES 55 MINUTES 44 SECONDS WEST AND A RADIUS OF 66.40 FEET;

THENCE DEPARTING SAID JURISDICTION LINE AND UPON AND WITH SAID BACK OF CURB AND ALONG SAID CURVE THROUGH A CENTRAL ANGLE OF 57 DEGREES 11 MINUTES 01 SECONDS, AN ARC LENGTH OF 66.27 FEET;

THENCE CONTINUING UPON AND WITH SAID BACK OF CURB, NORTH 00 DEGREES 53 MINUTES 15 SECONDS EAST, A DISTANCE OF 812.16 FEET TO THE BEGINNING OF A TANGENT CURVE TO THE LEFT HAVING A RADIUS OF 34.42 FEET;

THENCE ALONG SAID CURVE THROUGH A CENTRAL ANGLE OF 13 DEGREES 19 MINUTES 01 SECONDS, AN ARC LENGTH OF 8.00 FEET;

THENCE DEPARTING AFORESAID BACK OF CURB, NORTH 89 DEGREES 06 MINUTES 45 SECONDS WEST, A DISTANCE OF 29.49 FEET;

THENCE NORTH 00 DEGREES 53 MINUTES 15 SECONDS EAST, A DISTANCE OF 52.79 FEET TO A POINT ON THE CENTERLINE OF MISSOURI AVENUE, ALSO BEING A POINT ON THE NORTH LINE OF THE SOUTHEAST QUARTER OF SAID SECTION 17;

THENCE NORTH 00 DEGREES 53 MINUTES 55 SECONDS EAST, A DISTANCE OF 50.99 FEET;
THENCE SOUTH 89 DEGREES 06 MINUTES 05 SECONDS EAST, A DISTANCE OF 16.99 FEET TO A POINT ON THE BACK OF CURB AND THE BEGINNING OF A NON-TANGENT CURVE TO THE LEFT HAVING A RADIAL BEARING OF NORTH 75 DEGREES 47 MINUTES 04 SECONDS WEST AND A RADIUS OF 34.42 FEET;

THENCE UPON AND WITH THE BACK OF CURB AND ALONG THE SAID CURVE THROUGH A CENTRAL ANGLE OF 13 DEGREES 19 MINUTES 01 SECONDS, AN ARC LENGTH OF 8.00 FEET;

THENCE CONTINUING UPON AND WITH SAID BACK OF CURB NORTH 00 DEGREES 53 MINUTES 55 SECONDS EAST, A DISTANCE OF 150.00 FEET;

THENCE NORTH 04 DEGREES 52 MINUTES 16 SECONDS EAST, A DISTANCE OF 180.43 FEET;

THENCE NORTH 00 DEGREES 50 MINUTES 24 SECONDS EAST, A DISTANCE OF 867.49 FEET;

THENCE DEPARTING AFORESAID BACK OF CURB NORTH 89 DEGREES 06 MINUTES 05 SECONDS WEST, A DISTANCE OF 12.32 FEET;

THENCE NORTH 00 DEGREES 53 MINUES 55 SECONDS EAST, A DISTANCE OF 25.82 FEET TO A POINT ON THE BACK OF CURB AND THE BEGINNING OF A NON-TANGENT CURVE TO THE LEFT HAVING A RADIAL BEARING OF SOUTH 40 DEGREES 49 MINUTES 53 SECONDS WEST AND A RADIUS OF 34.42 FEET;

THENCE UPON AND WITH THE BACK OF CURB AND ALONG THE SAID CURVE THROUGH A CENTRAL ANGLE OF 31 DEGREES 46 MINUTES 08 SECONDS, AN ARC LENGTH OF 19.08 FEET;

THENCE DEPARTING SAID BACK OF CURB NORTH 00 DEGREES 53 MINUTES 55 SECONDS EAST, A DISTANCE OF 61.12 FEET TO A POINT ON THE BACK OF CURB AND THE BEGINNING OF A NON-TANGENT CURVE TO THE LEFT HAVING A RADIAL BEARING OF NORTH 32 DEGREES 53 MINUTES 49 SECONDS WEST AND A RADIUS OF 33.31 FEET;

THENCE UPON AND WITH THE BACK OF CURB AND ALONG THE SAID CURVE THROUGH A CENTRAL ANGLE OF 18 DEGREES 21 MINUTES 03 SECONDS, AN ARC LENGTH OF 10.67 FEET;

THENCE DEPARTING SAID BACK OF CURB NORTH 00 DEGREES 53 MINUTES 55 SECONDS EAST, A DISTANCE OF 21.78 FEET;

THENCE SOUTH 89 DEGREES 06 MINUTES 05 SECONDS EAST, A DISTANCE OF 7.35 FEET TO THE BACK OF CURB;

THENCE UPON AND WITH SAID BACK OF CURB NORTH 00 DEGREES 01 MINUTES 07 SECONDS EAST, A DISTANCE OF 150.00 FEET;

THENCE NORTH 03 DEGREES 27 MINUTES 24 SECONDS EAST, A DISTANCE OF 180.15 FEET;

THENCE NORTH 00 DEGREES 31 MINUTES 57 SECONDS WEST, A DISTANCE OF 573.44 FEET;

THENCE NORTH 00 DEGREES 53 MINUTES 55 SECONDS EAST, A DISTANCE OF 343.96 FEET TO A

POINT 10.00 FEET SOUTH OF THE NORTH LINE OF THE NORTHEAST QUARTER OF AFORESAID SECTION 17, SAID POINT ALSO BEING THE COMMON JURISDICTION CORNER OF THE COUNTY OF MARICOPA AND THE CITY OF PHOENIX;

THENCE DEPARTING AFORESAID BACK OF CURB AND UPON AND WITH A LINE PARALLEL TO AND 10.00 FEET SOUTH OF THE SAID NORTH LINE, NORTH 89 DEGREES 37 MINUTES 58 SECONDS EAST, A DISTANCE OF 26.47 FEET TO THE COMMON JURISDICTION CORNER BETWEEN THE COUNTY OF MARICOPA, THE CITY OF GLENDALE AND THE CITY OF PHOENIX TO A POINT ON THE EAST LINE OF SAID NORTHEAST QUARTER;

THENCE UPON AND WITH THE JURISDICTIONAL LINE BETWEEN THE COUNTY OF MARICOPA AND THE CITY OF GLENDALE, ALSO BEING EAST LINE OF THE SAID NORTHEAST QUARTER, SOUTH 00 DEGREES 53 MINUTES 55 SECONDS WEST A DISTANCE OF 2627.81 FEET TO THE EAST QUARTER CORNER OF SAID SECTION 17 ALSO BEING THE CENTERLINE INTERSECTION OF 99TH AVENUE AND MISSOURI AVENUE;

THENCE CONTINUING UPON AND WITH THE JURISDICTIONAL LINE BETWEEN THE COUNTY OF MARICOPA AND THE CITY OF GLENDALE, ALSO BEING THE NORTH LINE OF THE SOUTHWEST QUARTER OF SAID SECTION 16, NORTH 88 DEGREES 15 MINUTES 22 SECONDS EAST, A DISTANCE OF 23.02 FEET;

THENCE UPON AND WITH THE JURISDICTIONAL LINE BETWEEN THE COUNTY OF MARICOPA AND THE CITY OF GLENDALE, ALSO BEING A LINE PARALLEL TO AND 23.00 FEET EAST OF THE EAST LINE OF THE SOUTHEAST QUARTER OF AFORESAID SECTION 17, SOUTH 00 DEGREES 53 MINUTES 15 SECONDS WEST, A DISTANCE OF 2570.02 FEET;

THENCE DEPARTING SAID EAST LINE, SOUTH 88 DEGREES 08 MINUTES 39 SECONDS WEST, A DISTANCE OF 23.03 FEET TO THE POINT OF BEGINNING AND CONTAINING A COMPUTED AREA OF 155,372 SQUARE FEET OR 3.567 ACRES OF LAND, MORE OR LESS.



CITY OF PHOENIX
BRASS CAP IN HANDHOLE
STAMPED "N397"
S 1/4 COR SEC 17, T2N, R1E

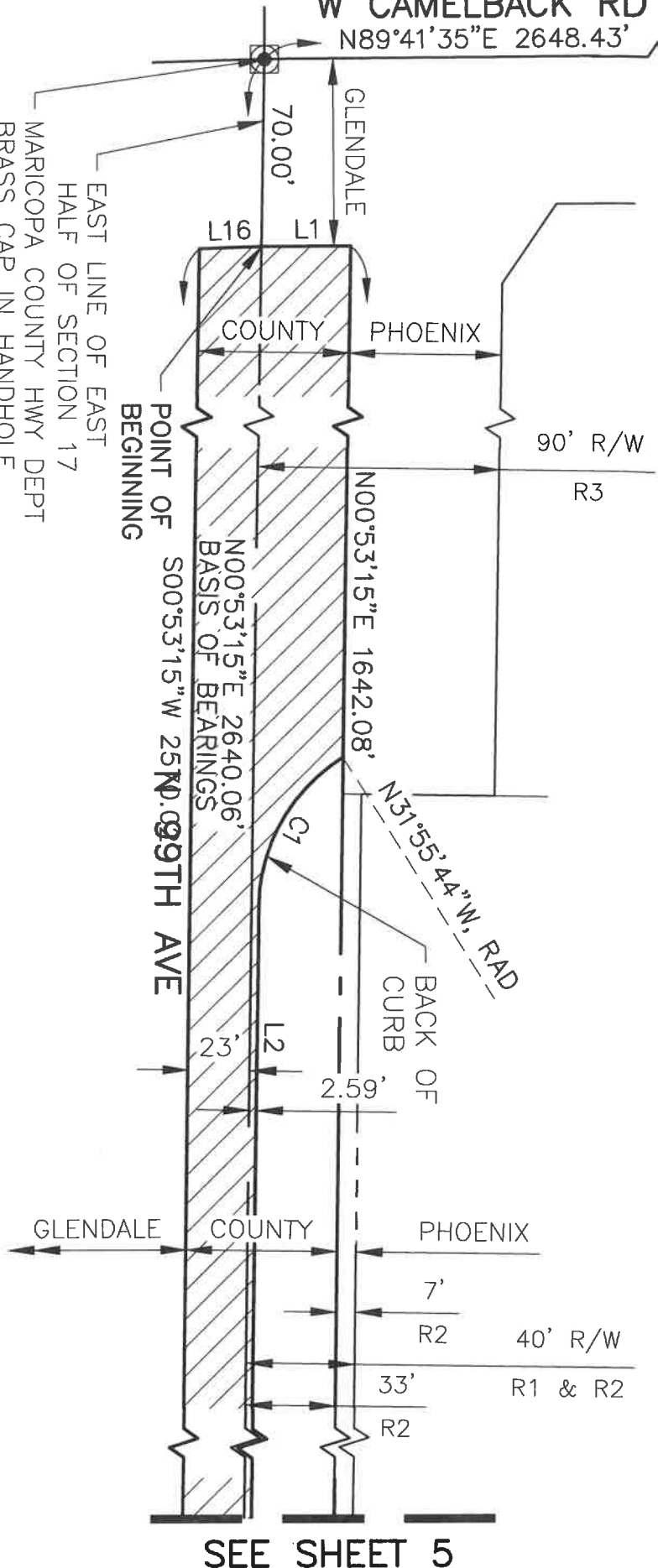
PARCEL AREA:
155,372 SF OR
3.567 ACRES

THIS IS NOT A PROPERTY
BOUNDARY SURVEY.

NTS

W CAMELBACK RD

N89°41'35"E 2648.43'



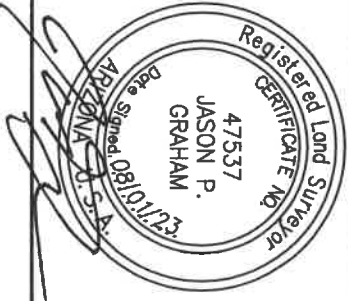
SEE SHEET 5

EAST LINE OF EAST
HALF OF SECTION 17
MARICOPA COUNTY HWY DEPT
BRASS CAP IN HANDHOLE
STAMPED "N397"
SE COR SEC 17, T2N, R1E
POINT OF COMMENCEMENT



DIBBLE

Dibble Project No
1020065.02



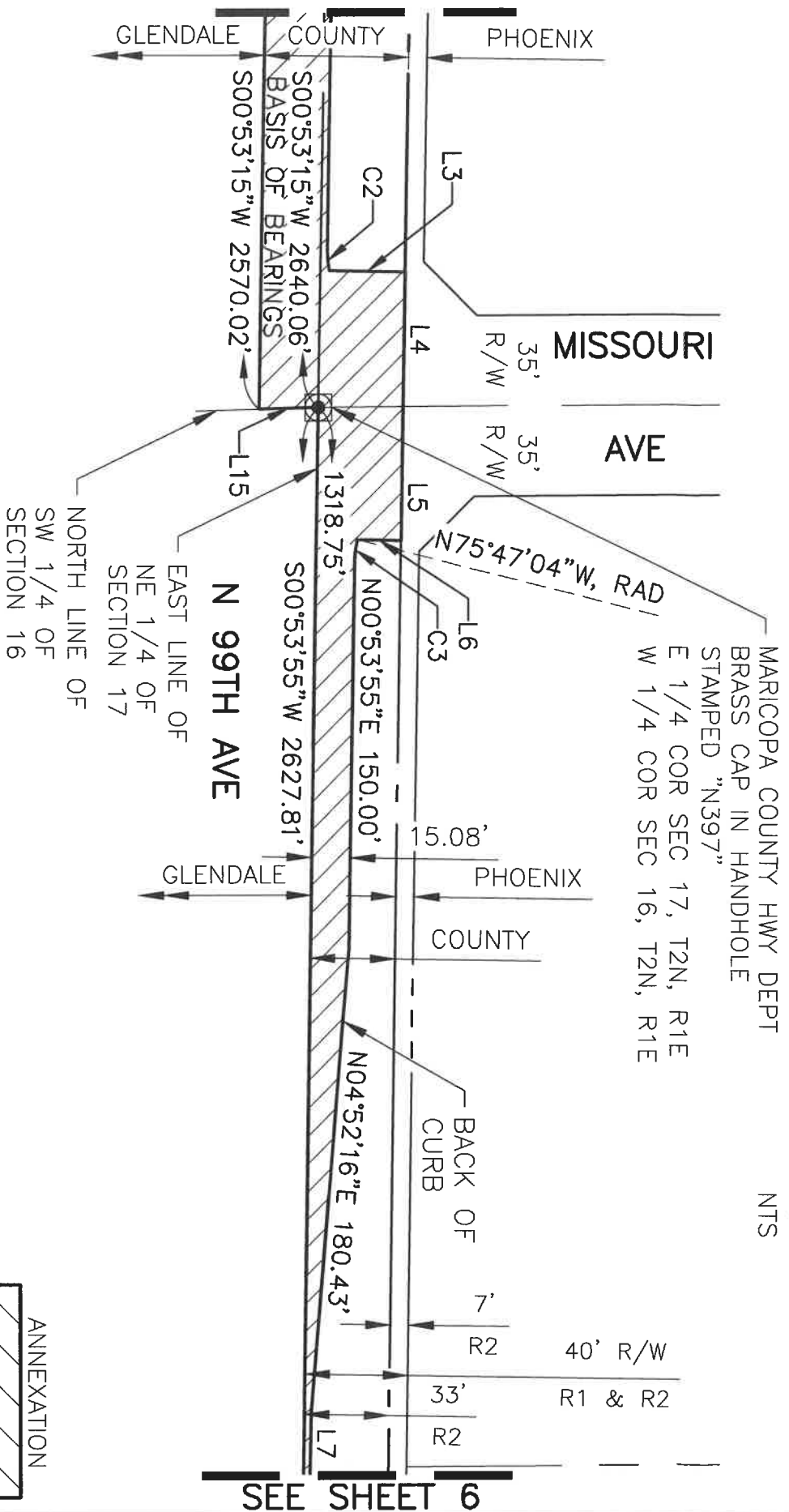
ANNEXATION
99TH AVE BETWEEN CAMELBACK RD
& BETHANY HOME RD

A PART OF E 1/2 SECT 17 AND SW 1/4 SECT 16, T2N, R1E, GILA
& SALT RIVER MERIDIAN, MARICOPA COUNTY, ARIZONA

DATE: AUG 2023
DRN: BAR CHK: CSD

PAGE 4

SEE SHEET 4



SEE SHEET 6

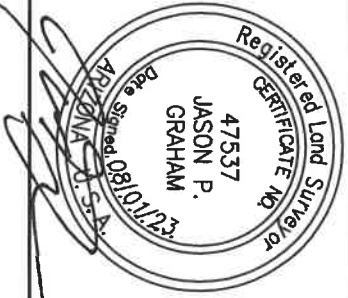
THIS IS NOT A PROPERTY BOUNDARY SURVEY.

NTS



DIBBLE

Dibble Project No
1020065.02



ANNEXATION

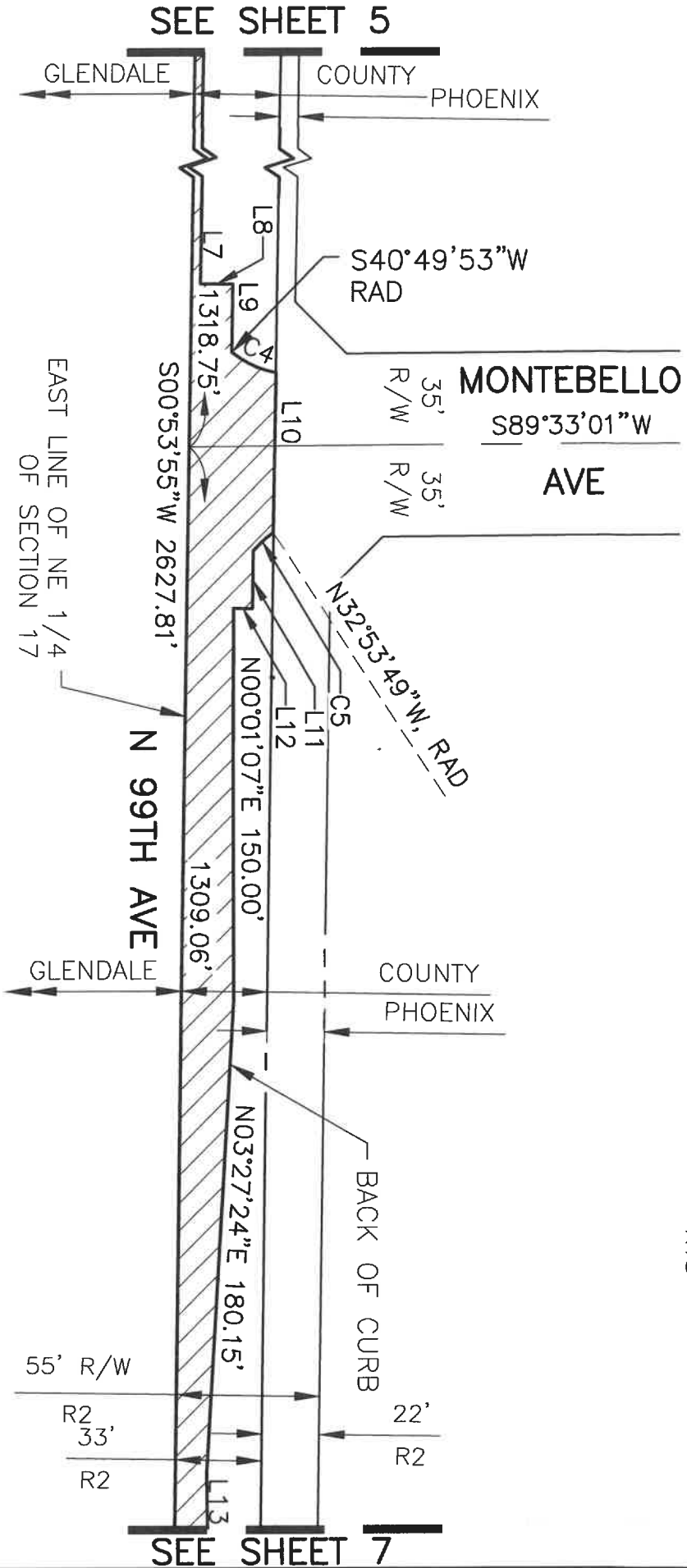
99TH AVE BETWEEN CAMELBACK RD
& BETHANY HOME RD

A PART OF E 1/2 SECT 17 AND SW 1/4 SECT 16, T2N, R1E, GILA
& SALT RIVER MERIDIAN, MARICOPA COUNTY, ARIZONA

DATE: AUG 2023
DRN: BAR CHK: CSD

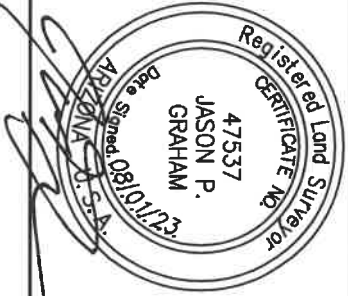
PAGE 5

THIS IS NOT A PROPERTY BOUNDARY SURVEY.



DIBBLE

Dibble Project No
1020065.02



ANNEXATION

99TH AVE BETWEEN CAMELBACK RD
& BETHANY HOME RD
A PART OF E 1/2 SECT 17 AND SW 1/4 SECT 16, T2N, R1E, G1A
& SALT RIVER MERIDIAN, MARICOPA COUNTY, ARIZONA

DATE: AUG 2023
DRN: BAR CHK: CSD

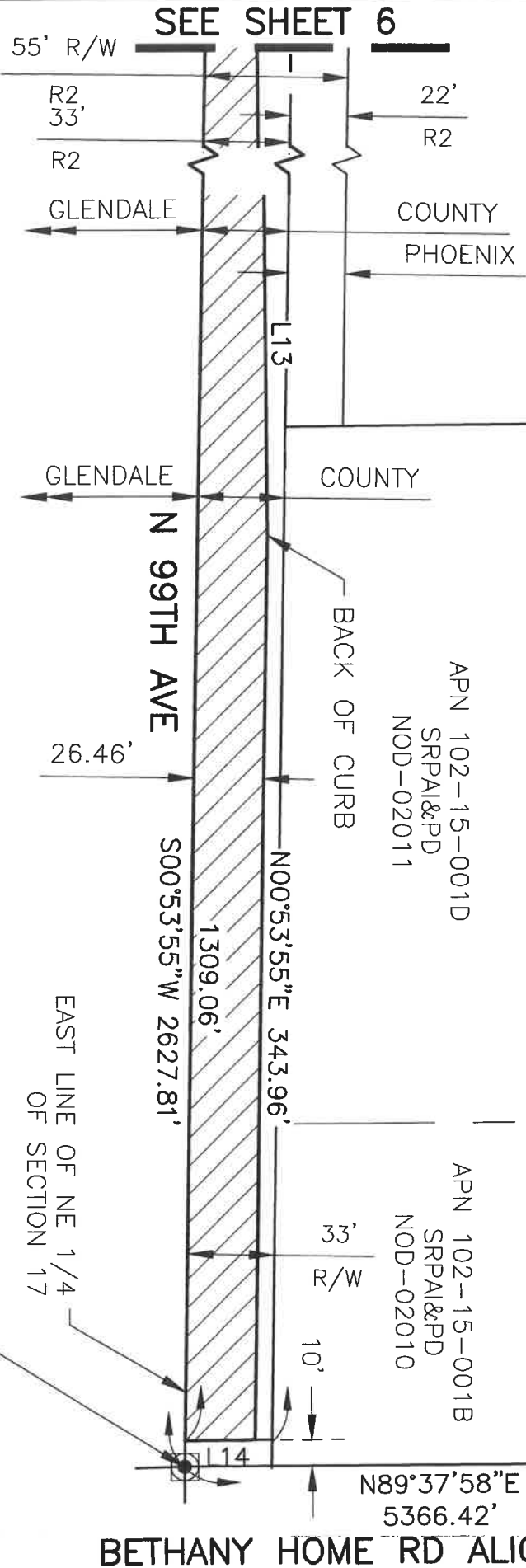
THIS IS NOT A PROPERTY BOUNDARY SURVEY.



SRP BRASS CAP FLUSH,
 STAMPED LS 15925 2000
 CENTER BRIDGE, E SIDE
 NW COR SEC 17, T2N, R1E

APN 102-15-001D
 SRPA&PD
 NOD-02011

APN 102-15-001B
 SRPA&PD
 NOD-02010

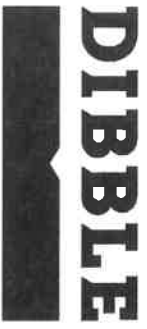


MARICOPA COUNTY HIGHWAY DEPT
 BRASS CAP, FLUSH
 NE COR SEC 17, T2N, R1E

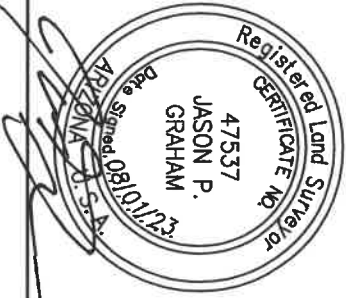
EAST LINE OF NE 1/4
 OF SECTION 17

ANNEXATION

99TH AVE BETWEEN CAMELBACK RD
 & BETHANY HOME RD
 A PART OF E 1/2 SECT 17 AND SW 1/4 SECT 16, T2N, R1E, GILA
 & SALT RIVER MERIDIAN, MARICOPA COUNTY, ARIZONA



Dibble Project No
 1020065.02



DATE: AUG 2023
 DRN: BAR
 CHK: CSD

PAGE 7

LINE DATA TABLE		
LINE	BEARING	DISTANCE
L1	S89°41'35"W	33.01'
L2	N00°53'15"E	812.16'
L3	N89°06'45"W	29.49'
L4	N00°53'15"E	52.79'
L5	N00°53'55"E	50.99'
L6	S89°06'05"E	16.99'
L7	N00°50'24"E	867.49'
L8	N89°06'05"W	12.32'

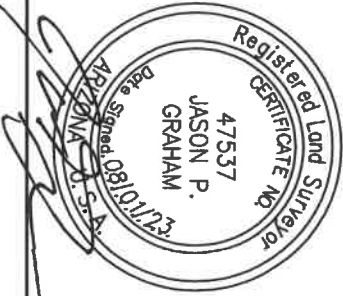
LINE DATA TABLE		
LINE	BEARING	DISTANCE
L9	N00°53'55"E	25.82'
L10	N00°53'55"E	61.12'
L11	N00°53'55"E	21.78'
L12	S89°06'05"E	7.35'
L13	N00°31'57"W	573.44'
L14	N89°37'58"E	26.47'
L15	N88°15'22"E	23.02'
L16	S88°08'39"W	23.03'

CURVE DATA TABLE			
CURVE	LENGTH	RADIUS	DELTA
C1	66.27'	66.40'	57°11'01"
C2	8.00'	34.42'	13°19'01"
C3	8.00'	34.42'	13°19'01"
C4	19.08'	34.42'	31°46'08"
C5	10.67'	33.31'	18°21'03"

- REFERENCES**
 R1 - BOOK 1378, PAGE 21, MCR
 R2 - BOOK 1482, PAGE 8, MCR
 R3 - DOC 1999-1081256, MCR

DIBBLE

Dibble Project No
1020065.02



ANNEXATION

99TH AVE BETWEEN CAMELBACK RD
 & BETHANY HOME RD
 A PART OF E 1/2 SECT 17 AND SW 1/4 SECT 16, T2N, R1E, G1LA
 & SALT RIVER MERIDIAN, MARICOPA COUNTY, ARIZONA

DATE: AUG 2023
 DRN: BAR CHK: CSD