



PEDESTRIAN CROSSING COUNTERMEASURES IN GLENDALE

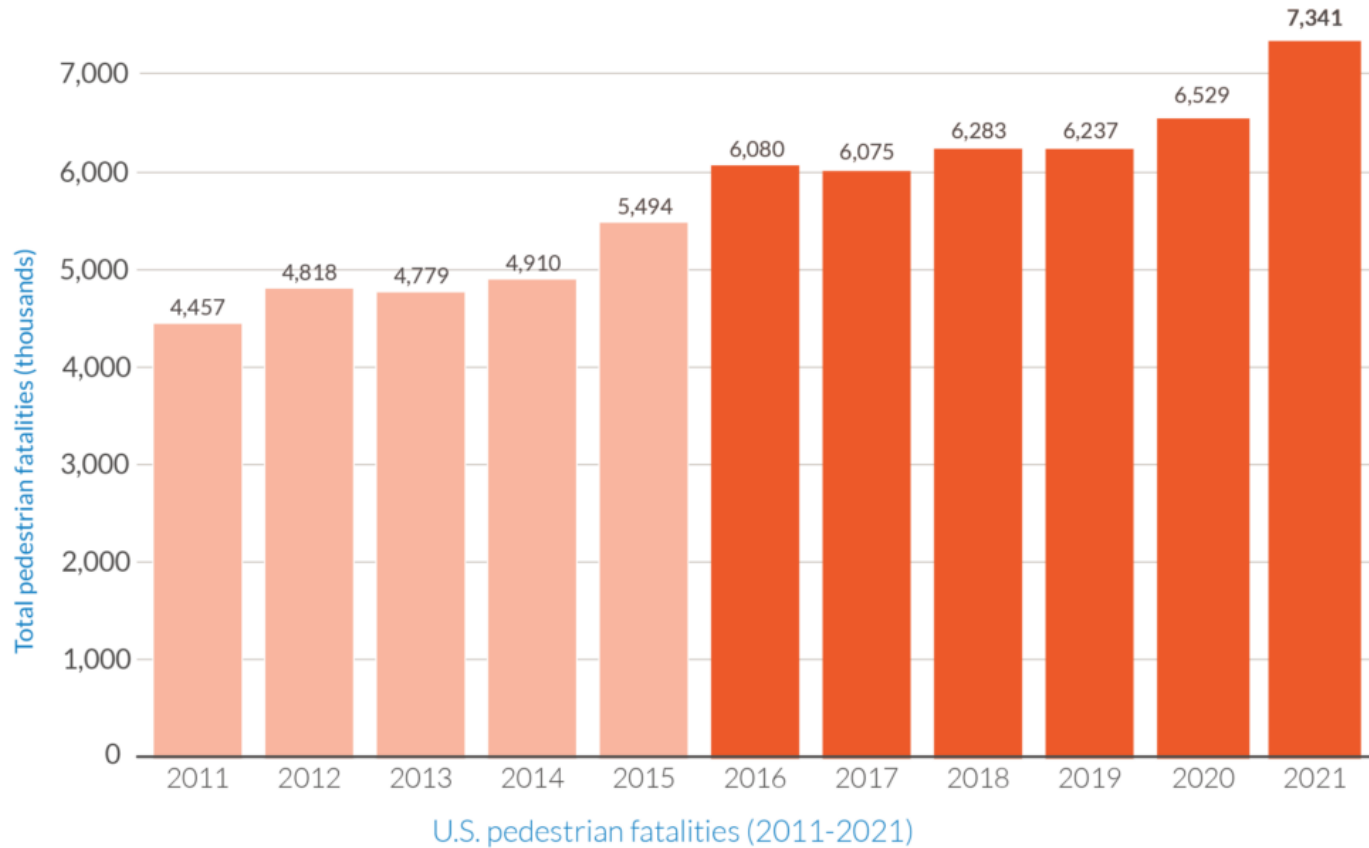
CTOC Meeting

By: Tony S. Abbo, P.E., PTOE

05/04/2023



Deaths of people walking are up **12 percent** from 2020 to 2021, a historic one year increase, and up **64 percent** total since 2011



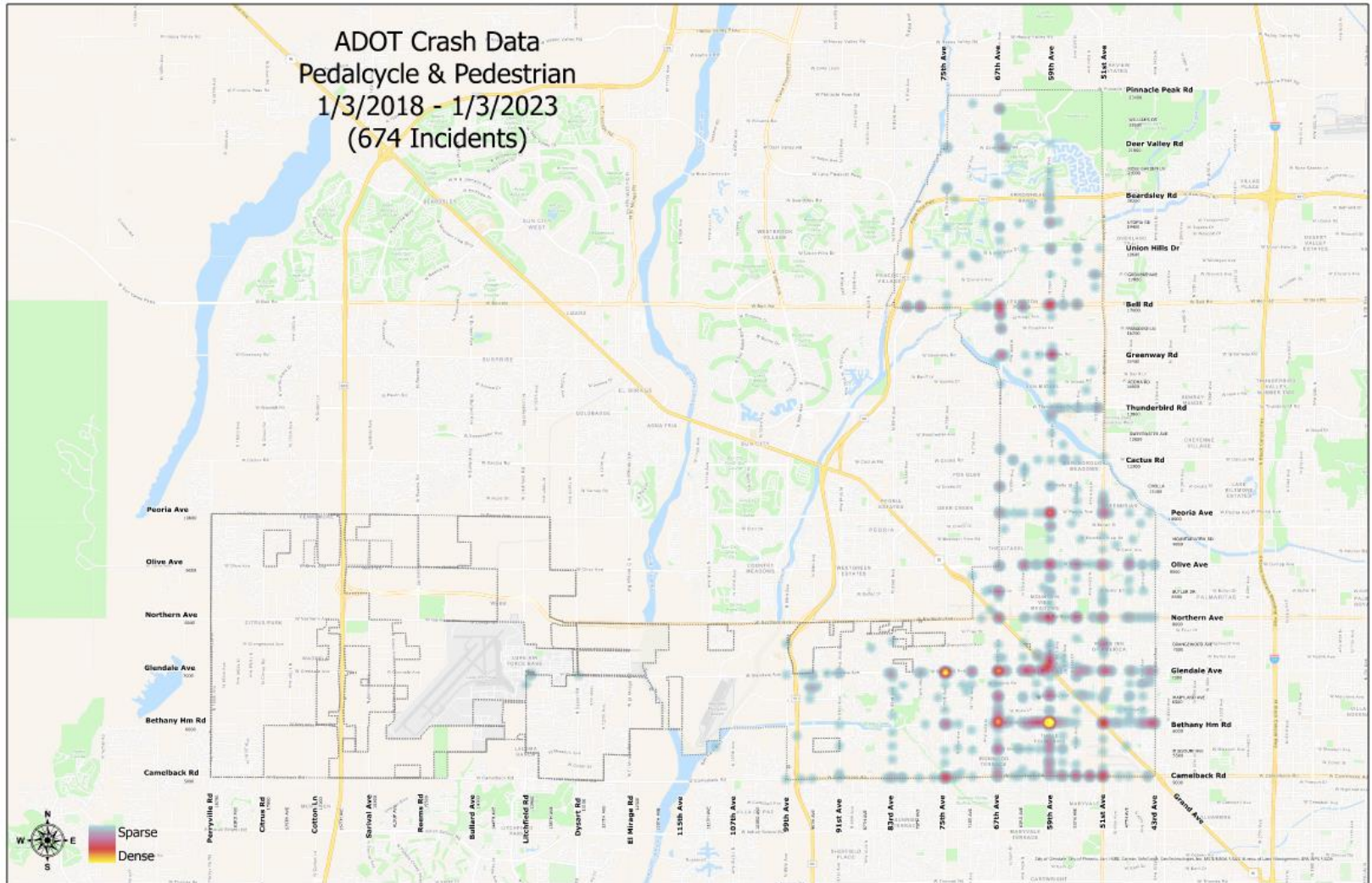


Pedestrian Safety

- Pedestrian safety is one of the focus areas for the City's Traffic Mitigation Section
- Pedestrian and bicycle crashes continue to occur within Glendale
 - Impairment and excessive speeds are major factors in those crashes
- Staff implementing counter measures

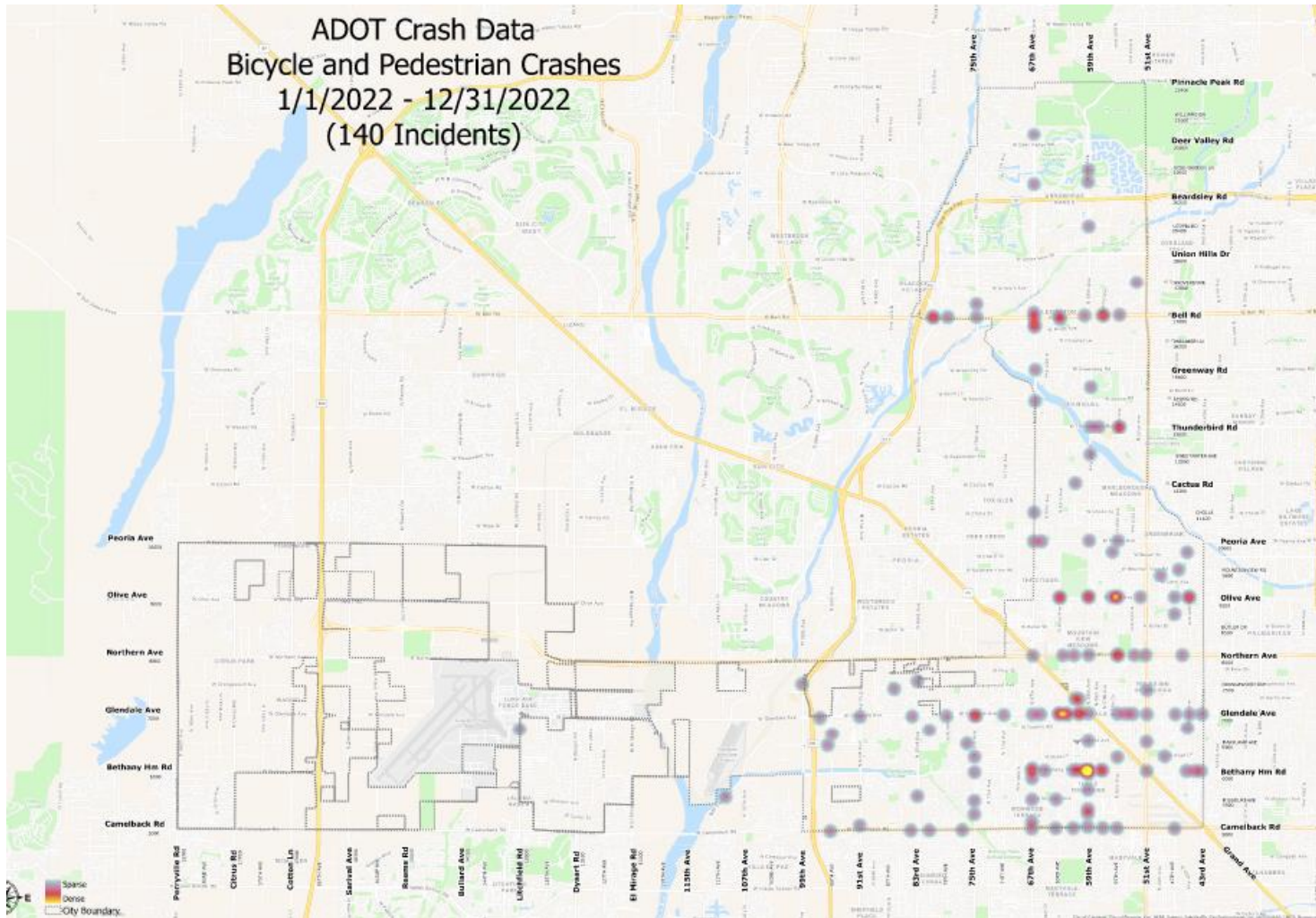


5-year Ped & Bike Crashes



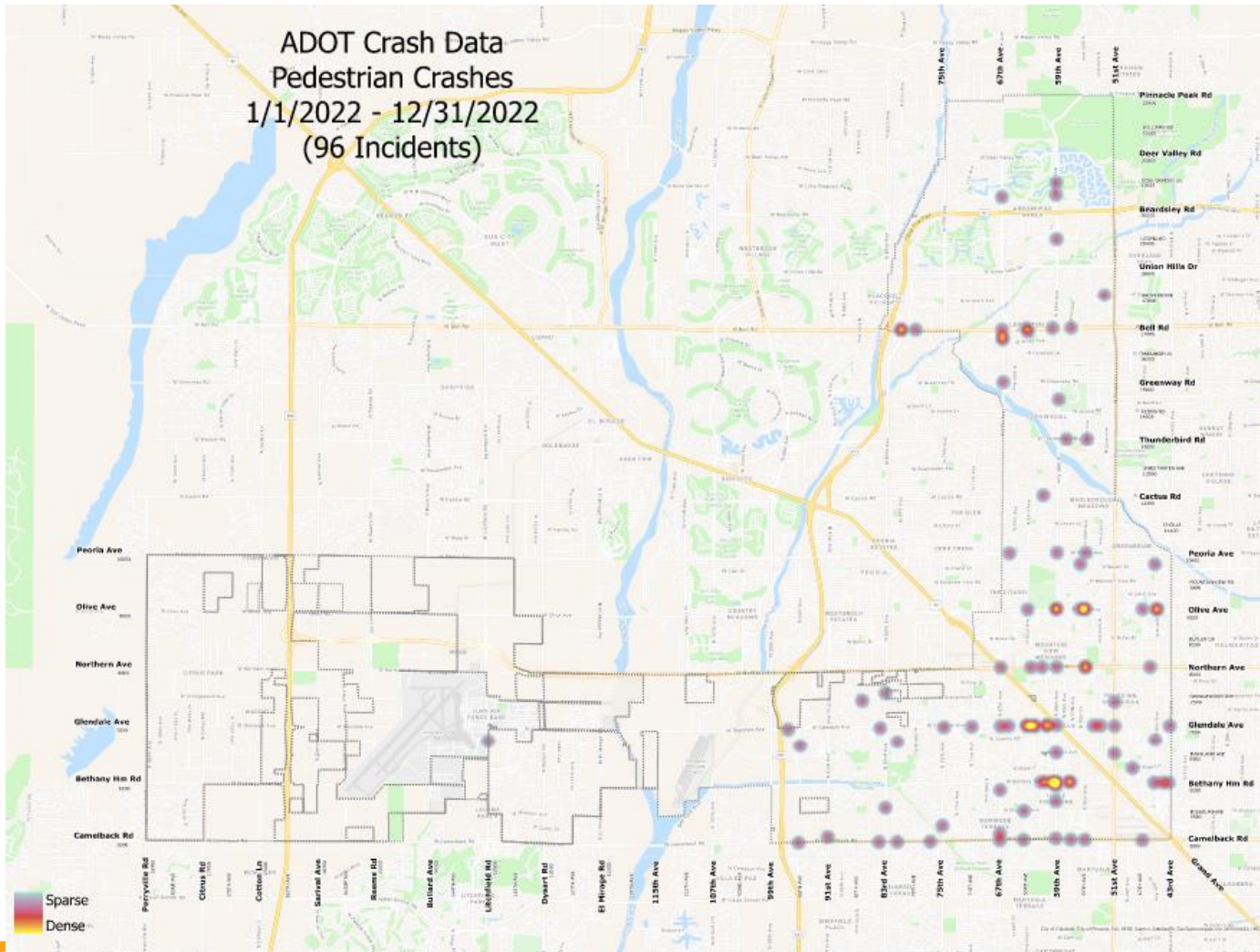


2022 Ped and Bike Crashes



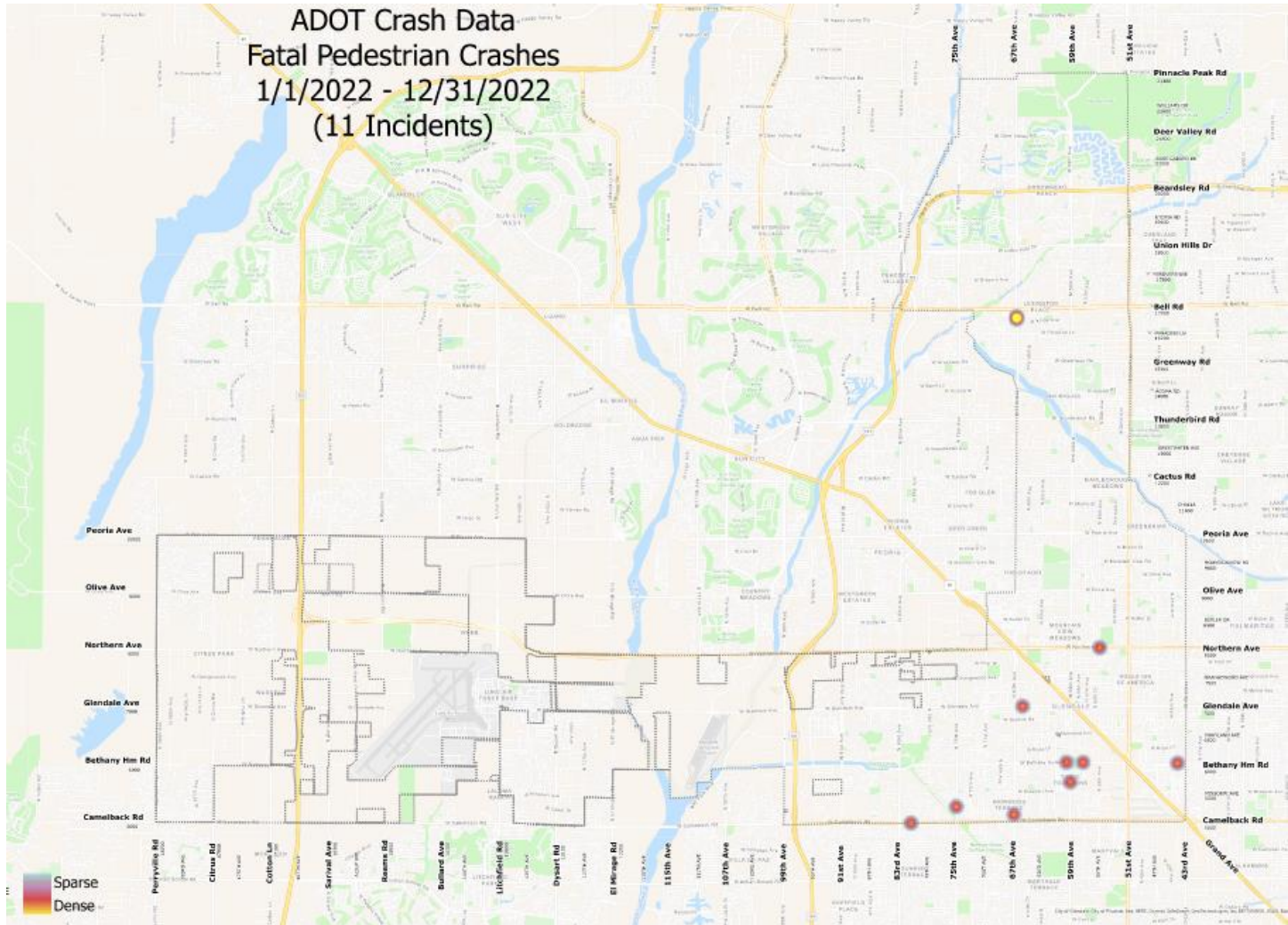


2022 Pedestrian Crashes





2022 Pedestrian Fatal Crashes





What is the City Doing

- Developing a crosswalk policy
- Looking for grant opportunities
 - Increasing the conspicuity of Pedestrians
 - Adding sidewalk where there are none
 - Separated sidewalks
 - RRFBs and HAWKS
 - Pedestrian detection



Pedestrian Safety Counter measures

- Studies
- Fluorescent Yellow/Green signing
- Painted crosswalks/high visibility crosswalks
- Rectangular Rapid Flashing Beacon (RRFB)
- HAWK Pedestrian Signals
- Improve lighting conditions

Fluorescent Yellow/Green Signing

- The Fluorescent Yellow/Green warning signs stand out

Old



New



Fluorescent Yellow/Green Signing



Painted Crosswalks/High Visibility Crosswalks

- Refreshing the crosswalk striping
 - Including at school zones
- Using High Visibility Crosswalks



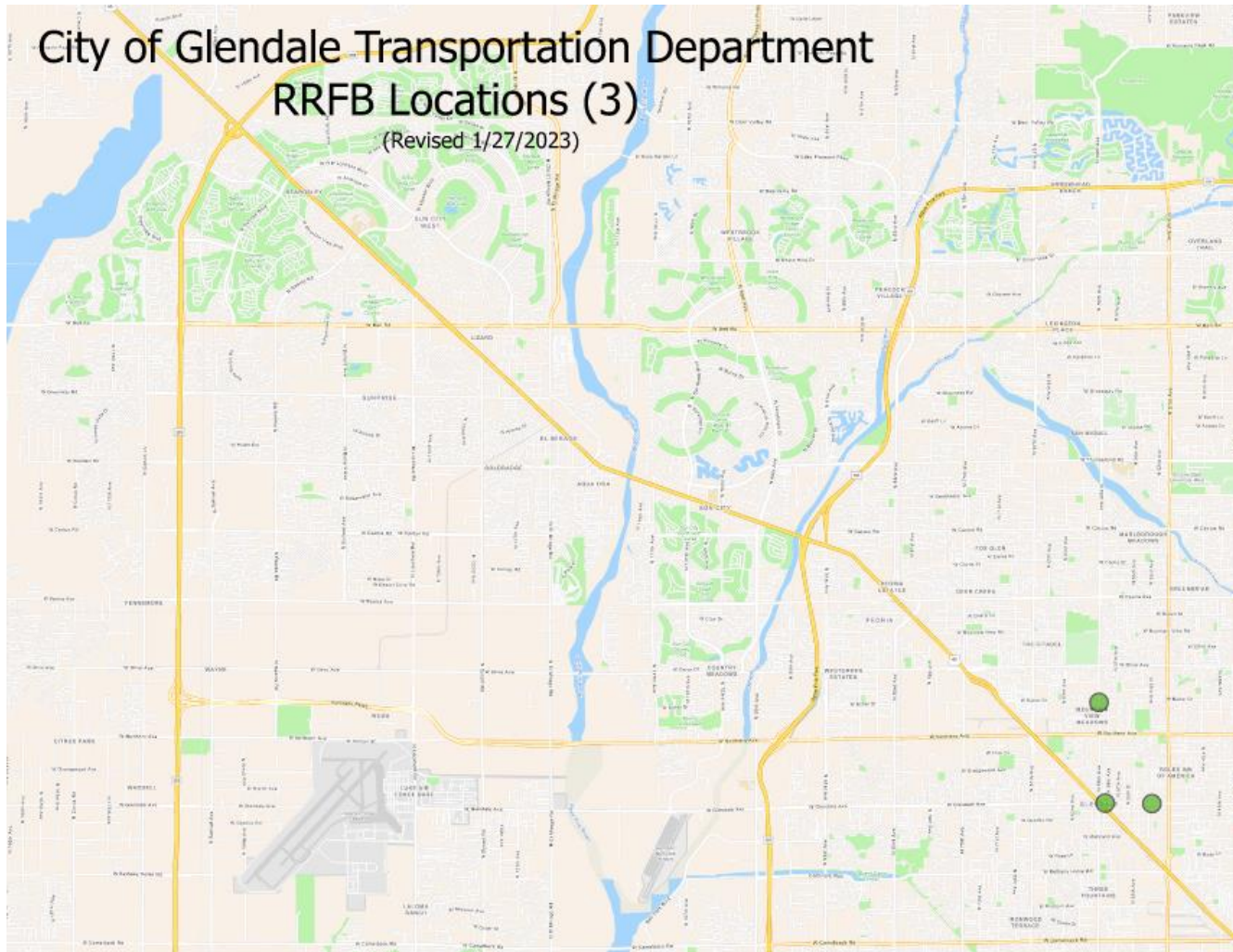
Rectangular Rapid Flashing Beacon (RRFB)

- RRFBs are pedestrian-actuated enhancements used in combination with a pedestrian, school crossing warning signs to improve safety at uncontrolled, marked crosswalks
- When activated, the two rectangular-shaped yellow indications, each with an LED-array-based light source, flash with high frequency





RRFB Locations





Rectangular Rapid Flashing Beacon (RRFB)

- 59th and Evergreen



- 53rd and Glendale Ave



RRFB's - Three Locations

- Glendale Avenue by City Hall



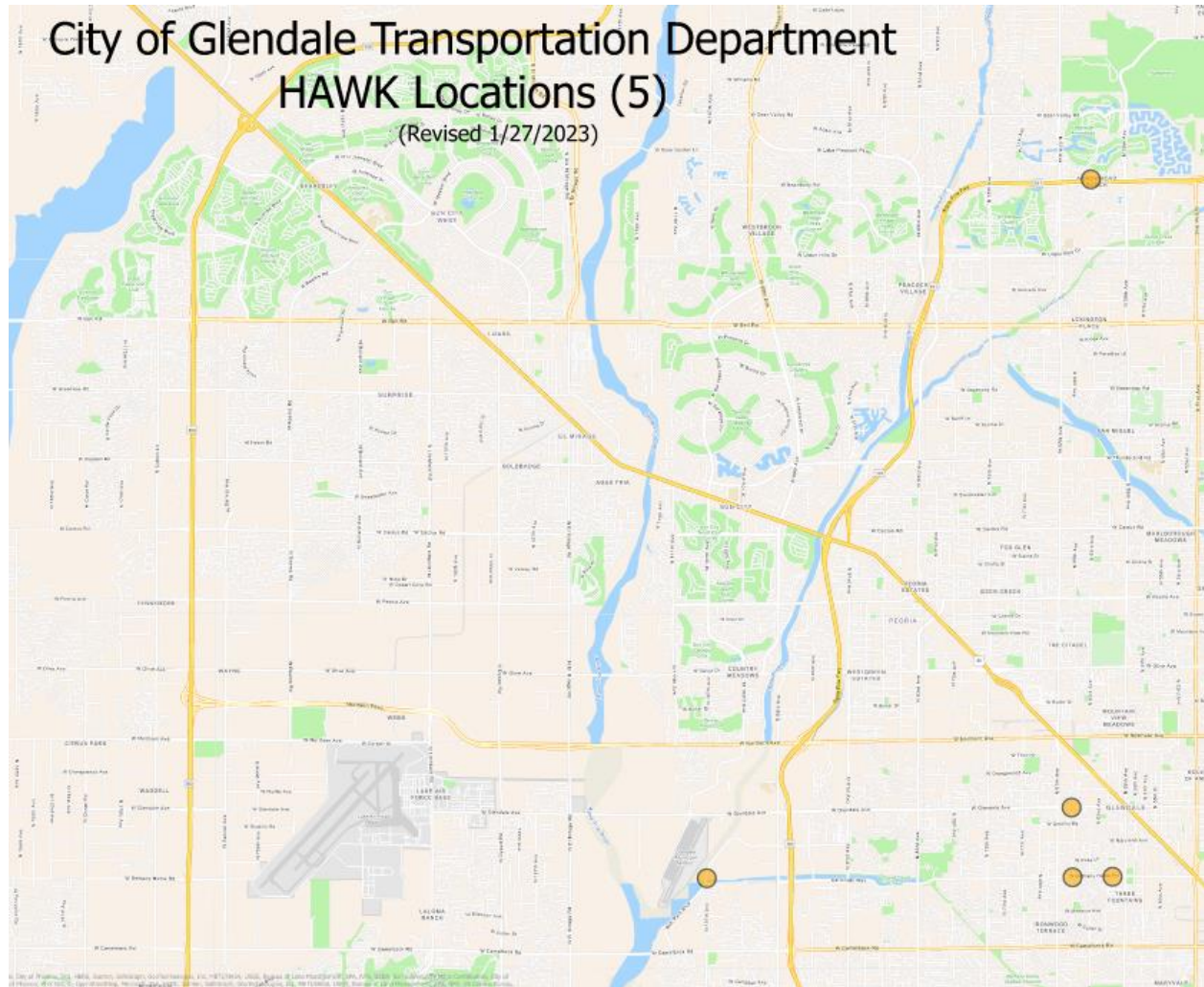


HAWK Pedestrian Signals

- HAWK signals are traffic signals that allow pedestrians to cross the road safely.
 - They can not be located within 300' of a signalized intersection
- Unlike traffic signals, the HAWK only operates when a pedestrian pushes the crossing button. Vehicles are free to move when no one is crossing the street
- 5 Locations throughout the City
 - 3 additional locations that are being planned



HAWK Locations



HAWKS

- Latest HAWK: Ball Park Blvd



HAWK - Glendale Ave & 65th Ave



HAWK on Bethany Home Road and 61st Ave





HAWKS

- 3 additional locations planned
 - 67th Ave and Montebello Ave
 - 58th Avenue and Bethany Home Road
 - 53rd Avenue and Camelback
- One location studied but no funding has been allocated
 - 59th and Evergreen



Street Lighting

- We have 2 infill lighting projects
 - One funded project that should be starting within the next 60 days
 - Design to commence in the near future
- Grant funding for improving lighting on Olive between 59th Avenue and 67th Avenue

Solar Lights

- Where there is no power, solar is an option
 - 475' walking path west of the inter of W. Butler Ave and N 56th Drive.





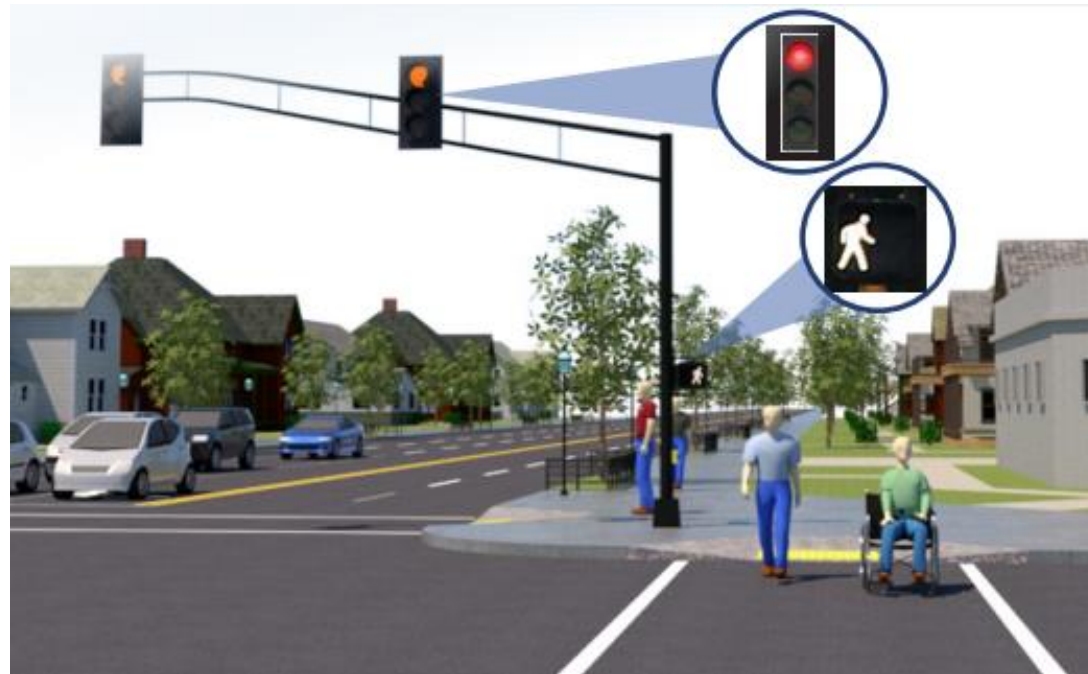
Adaptive Signals

- Detecting pedestrians at crosswalk
 - Extending the amber phase



Signal Timing Modification

- Leading Pedestrian Interval (LPI)
 - Implemented at 59th Ave and Glendale Ave





Signal Timing Modification (cont.)

- LPI gives pedestrians the opportunity to enter the crosswalk at an intersection 3-7 seconds before vehicles are given a green indication
- Pedestrians can better establish their presence in the crosswalk before vehicles have priority to turn right or left





- We have a 2-year safety on-Call contract
 - 2-year contract with Greenlight Engineering – Safety leaders in the metro area
 - Looking at redoing our signal timing policy (yellow intervals and all red)
 - Advance detection being added to projects



Questions

