



CROW 303 AZ (LUKE LOGISTICS) Annexation AN-261- BLANK PETITION

City Council Public Hearing, August 13, 2024





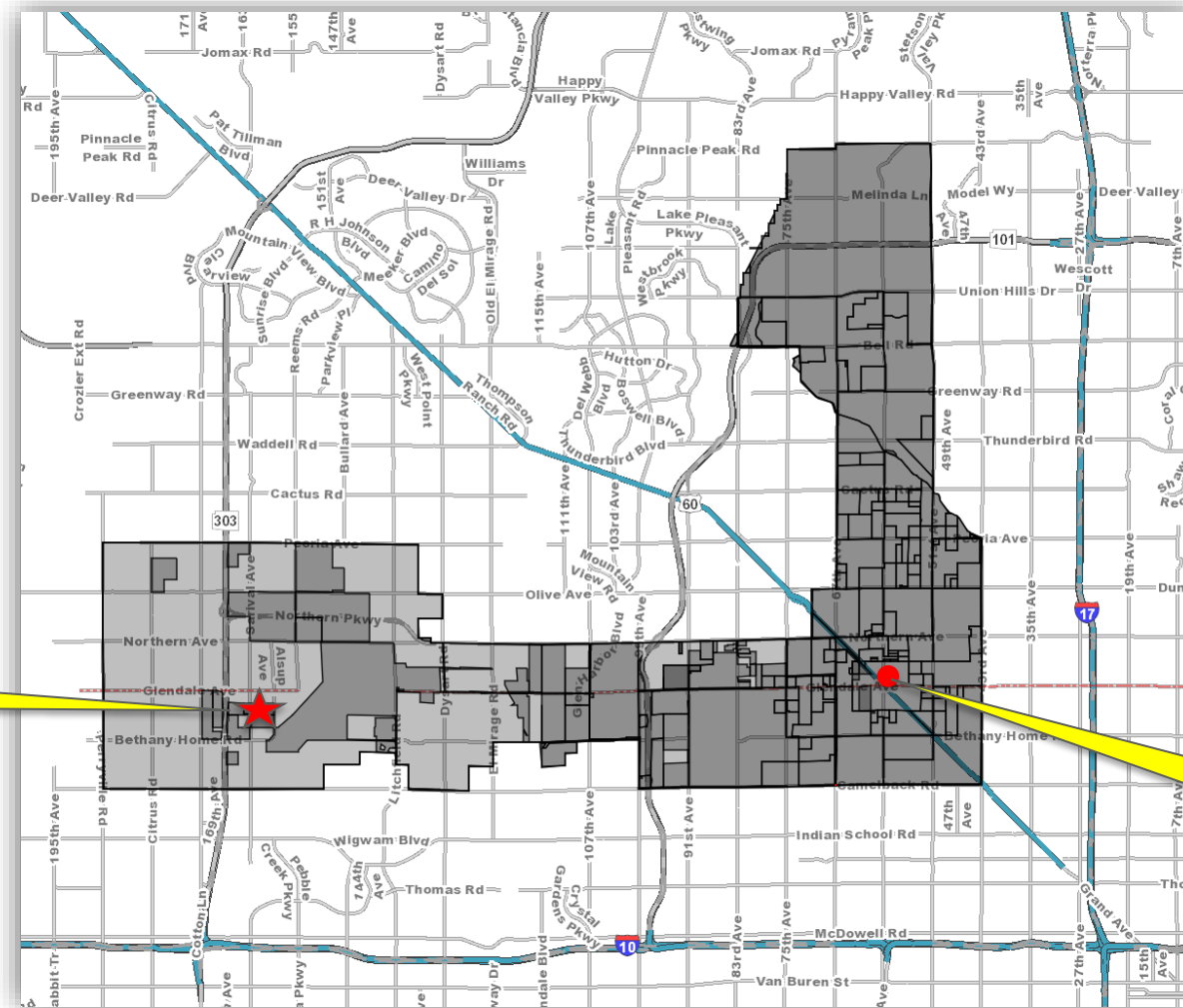
Annexation Information

- 9-acre parcel located at the Southeast corner of West Ocotillo Road and North Alsup Avenue.
- County jurisdiction zoning: RU-43.
- Zoning upon initial annexation: RR-45.



Vicinity Map

SOUTHEAST
CORNER OF
WEST
OCOTILLO
ROAD AND
NORTH ASLUP
AVENUE

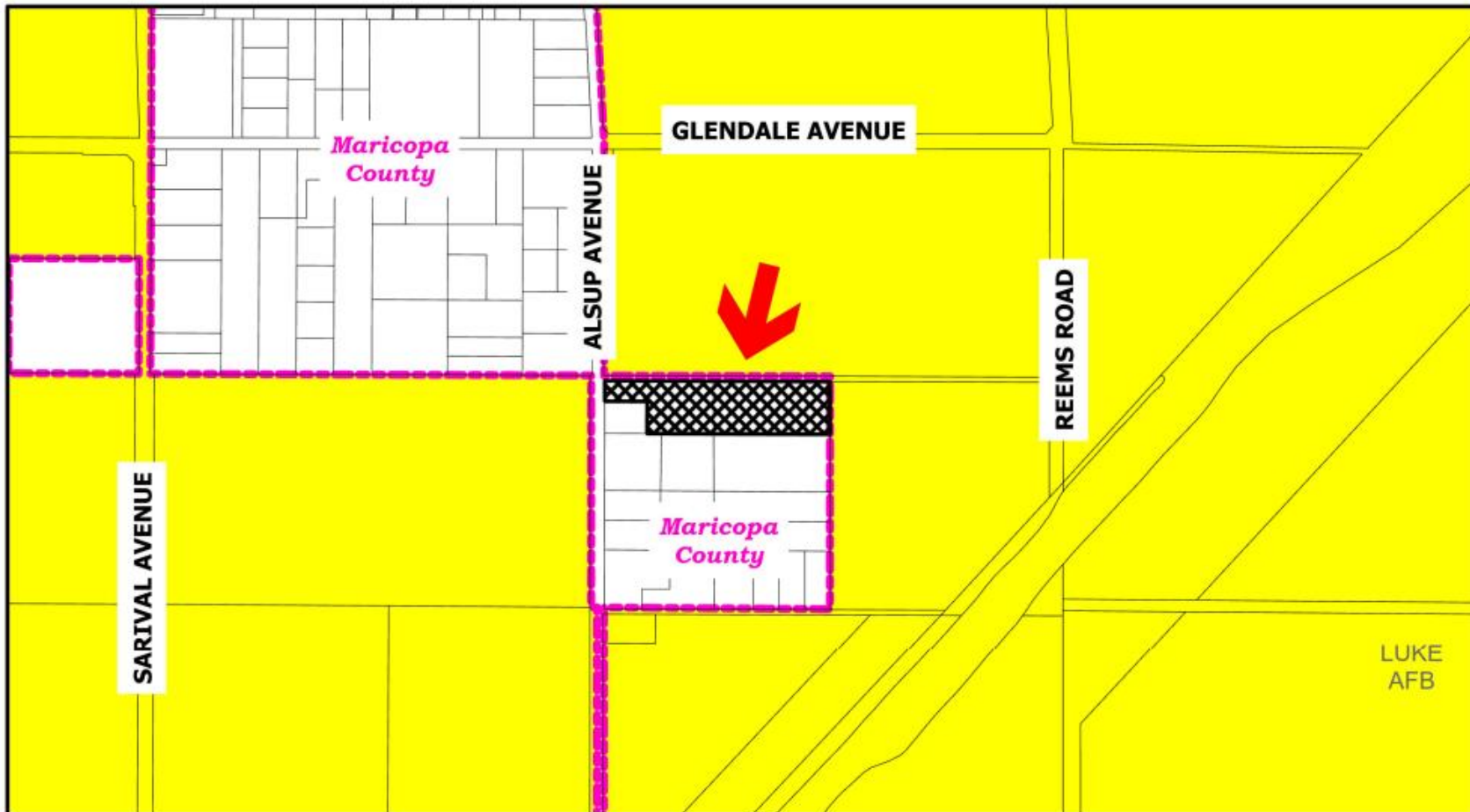


Annexation
Site Location

CITY
HALL

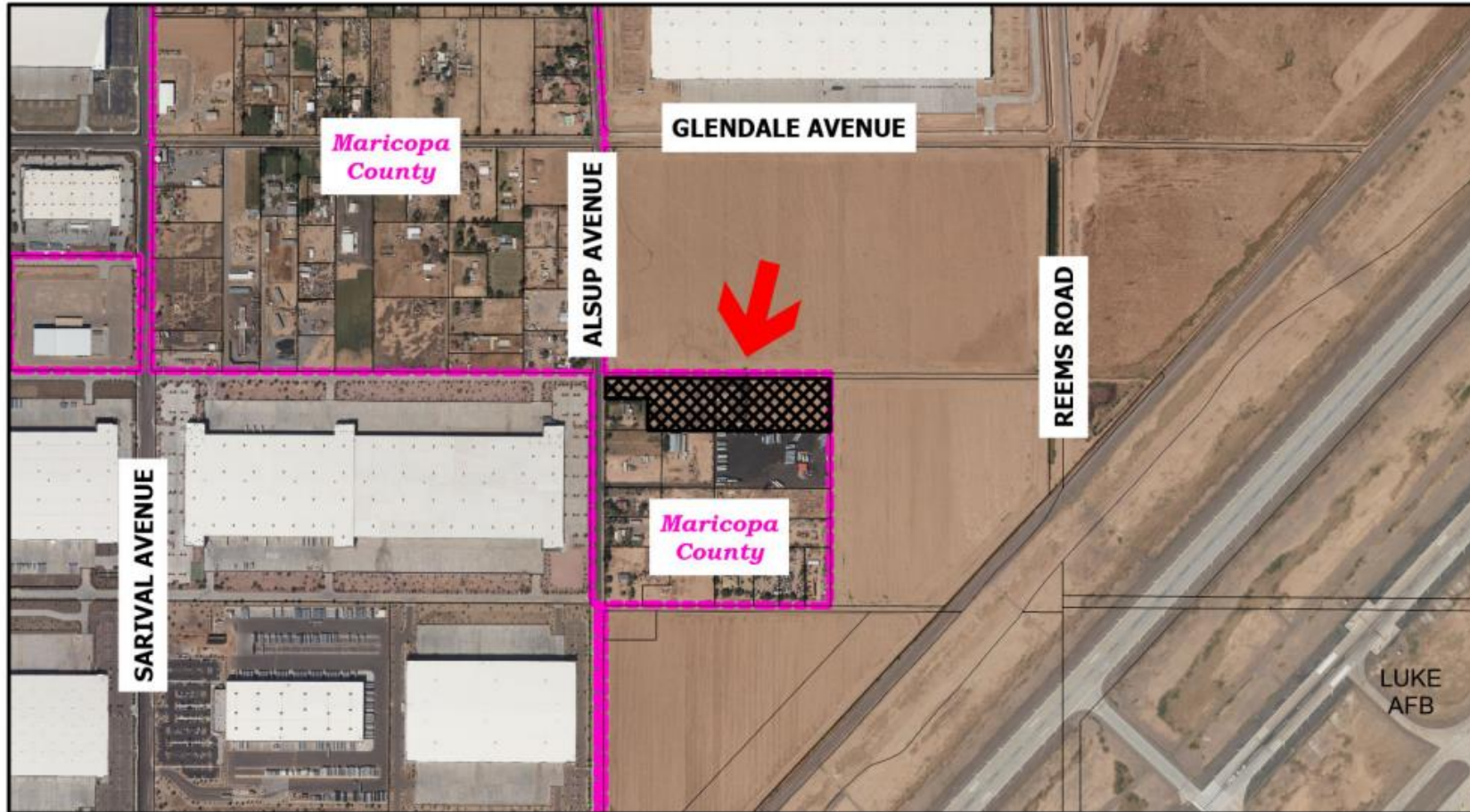


Annexation Map





Aerial Map





CROW 303 AZ (LUKE LOGISTICS) Annexation AN-261- BLANK PETITION

City Council Public Hearing, August 13, 2024

