

FROM: The Mayor and City Council of Glendale, Arizona
 c/o Jayme Chapin, P.E., Engineering – Land Development Division
 5850 West Glendale Avenue, Suite 315, Glendale, Arizona 85301

TO: Arizona Department of Transportation Right of Way Group
 205 South Seventeenth Avenue, Mail Drop 612E, Phoenix, Arizona 85007-3212
 Attn.: Byron Hopkins, R/W Group Titles Liaison, Resolution/Disposal Unit

RE: **WAIVER OF A.R.S. § 28-7209**

LOCATION: That portion of right of way known as West Glendale Avenue, taken into the State Transportation System to accommodate construction of the Bob Stump Memorial Parkway, State Route 303 Loop, lying between Engineering Station P.O.T. 1+70.00, Section Line, running Easterly to the PCCP Line located between Engineering Station P.O.T. 13+90.74, 111.75' Lt. Section Line, and Engineering Station P.O.T. 13+90.80, 112.50' Rt. Section Line, being portions of Sections 1 and 12, Township 2 North, Range 2 West of the Gila and Salt River Base and Meridian, Maricopa County, Arizona, as more particularly demarcated on Sheet P-7 of the Right of Way Plans of the BOB STUMP MEMORIAL PARKWAY, Camelback Road – Olive Avenue Section, Project 303L MA 007 H7138 02R / 303-A(209)N, ADOT Drawing D-07-T-993, marked as ADOT Disposal D-C-118 Exhibit "A-1", and on Exhibit "A-2", both of which are attached hereto and made a part hereof.

— — — — **WAIVER** — — — —

By signing below, the City Manager on behalf of the Mayor and City Council of Glendale, Arizona, hereby waive the Four-Year Advance Notice of Abandonment and Pavement Quality Report, in accordance with the provisions of Arizona Revised Statutes § 28-7209, which will allow the State of Arizona, by and through its Department of Transportation (ADOT) to abandon, according to law, in the near future, all of its interest in and to said right of way to the City of Glendale for a continued public transportation use, while retaining access control as necessary.

SEE ATTACHED SIGNATURE PAGE

Signature	Title	Date
------------------	--------------	-------------

RECORD

OWNERSHIP

ACQUIRED

PARCEL NUMBER	OWNER	DESCRIPTION OF AREA REQUIRED	TOTAL AREA	AREA REQUIRED (EXISTING / NEW EASEMENTS)		REMAINDER		SHEET NO.	TYPE	DOCUMENT
				GROSS (EXISTING)	NET (NEW)	LEFT	RIGHT			
① 7-10879	SUN STATE SALES & LEASES, et al	NE 1/4 of Section 36 T.2N., R.2W.		DELETED 8-16-11				12,14		
② 7-10923	White Tanks Storage, Inc.	Lot 3 of Section 1 T.2N., R.2W.	1,783,233	② 177,211		1,606,022		9-11,16	FOC	2013-0303021
② 7-11103	Amerco Real Estate Company	NW 4 of Section 1 T.2N., R. 2W.	725,596	② 83,465				9	FOC	2013-0098212
7-11219	Allen Ranches LLC, et al	W2 of Section 13 T.2N., R. 2W.	12,226,662	2,474,670		9,751,992		1-5,17	FOC	2012-0941142
7-11220	Aguila C-Boys, LLC	SE 4 of Section 13 T.2N., R. 2W.	2,451,682	155,509		2,296,173		1,2	WD	2011-1059065
7-11221	Adaman Irrigation Water Delivery District #36	E2 of Section 1 T.2N., R. 2W.	382,552	282,523		98,445		7-11	OC	2019-0323834
7-11222	Everkrisp Vegetables, Inc	E2 of Section 12 T.2N., R. 2W.	257,834	253,907				4-8	AGMT	2017-0520456
7-11222	Everkrisp Vegetables, Inc	E2 of Section 13 T.2N., R. 2W.	439,231	172,238		211,627		1-5		
7-11223	Peter Peter Cotton Tall L.L.C., et al	SE 4 of Section 13 T.2N., R. 2W.	3,202,330	1,962		3,200,368		1,3	WD	2011-0963615
7-11224	Jacky Edward Blake, et ux	NE 4 of Section 13 T.2N., R. 2W.	1,680,095	17,201	1,710 TCE	1,662,894		3	WD	2012-0685989
7-11225	Cotton Bethany L.L.C., et al	NE 4 of Section 13 T.2N., R. 2W.	1,258,707	168,878	602 TCE	1,039,384		3-5	FOC	2014-0516417
7-11228	Four Leaf Operations L.L.C.	SW 4 of Section 12 T.2N., R. 2W.	2,422,094	85,730		2,336,364		4,5	WD	2012-0318240
7-11229	Labour 303 L.L.C.	SE 4 of Section 12 T.2N., R. 2W.	4,921,834	72,669	6,090 TCE	4,833,897		4-6	WD	2012-0285852
7-11230	Cotton 303 L.L.C., et al	SW 4 of Section 12 T.2N., R. 2W.	435,717	40,385		395,332		4	FOC	2013-0706387
7-11231	French Fryes L.L.C.	W2 of Section 12 T.2N., R. 2W.	4,660,909	470,990		4,209,919		4,6-8	FOC	2013-1044945
7-11232	Virgin Farms III	NE 4 of Section 12 T.2N., R. 2W.	2,610,308	215,171	1,751 TCE	2,395,137		6	WD	2012-082445
7-11232-A	Virgin Farms III	NE 4 of Section 12 T.2N., R. 2W.	2,991,394	48,273	1,519 TCE	2,922,732		6-8	FOC	2012-0532665
7-11233	16689 West, L.L.C.	SE 4 of Section 1 T.2N., R. 2W.	6,426,009	145,450	1,062 TCE	6,280,559		7-9	FOC	2012-0532665
7-11234	Glendale - 303 Holdings, L.L.C.	NE 4 of Section 12 T.2N., R. 2W.	152,294	101,357				7,8	ACE	2017-046560
7-11237	Strawberry Shortcake L.L.C., et al	W2 of Section 1 T.2N., R. 2W.	6,135,159	274,202		5,860,957		7-9	WD	2012-0075937
7-11238	Olsen Revocable Trust, et al	NW 4 of Section 1 T.2N., R. 2W.	2,910,898	116,233		2,794,665		9	WD	2012-0722510
7-11242	Tyler Family Revocable Trust	NE 4 and Lot 2 of Section 1 T.2N., R. 2W.	4,088,096	264,438	2,699 TCE	3,786,473		9,11	FOC	2012-0837805
7-11244	Virgin Farms Partners	NE 4 of Section 1 T.2N., R. 2W.	349,058	305,302		43,755		9,11	FOC	2012-067661
7-11245	Northern Parkway Investors L.L.C.	SW 4 & SE 4 of Section 36 T.3N., R. 2W.	6,420,138	2,148,348		4,231,615		10,11,16	FOC	2012-0884811
7-11246	MPC Investments LLC	E2 of Section 36 T.3N., R. 2W.	16,114,436	2,925,324		13,149,960		10-12,14,15	FOC	2012-0611517
7-11247	303 Investment Holdings L.L.C., et al	NW 4 of Section 36 T.3N., R. 2W.	3,483,044	937,442		2,545,602		10,12	FOC	2011-0755218
7-11249	Salvador Prado Jr., et ux	NW 4 of Section 36 T.3N., R. 2W.	1,646,638	500,372		1,146,266		12,13	FOC	2013-1073641
7-11744	Goodyear Farms Inc.	NE 4 of Section 36 T.3N., R. 2W.	113,153	113,153				12,13	WD	2011-0736417
7-11833	ARIZONA PUBLIC SERVICE COMPANY	Sections 1,12 and 13 T.2N., R. 2W.	117,787	12,971		1,152		12-14	AGMT	NOT RECORDED

ACCESS RIGHTS ONLY

MINERAL RIGHTS ONLY

EASEMENT INTEREST ONLY

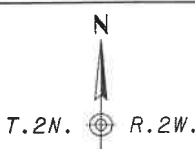
ALL AREAS ARE IN SQUARE FEET UNLESS OTHERWISE NOTED

ADOT
Disposal/D-C-118
EXHIBIT "A"

REVISIONS
 DATED 5/12/15
 Prepared by
 Digitally signed by
 Date: 2015.07.17
 14:32:26 -0700
 ELECTRONIC SEAL

PLANNING MAP NO. 0-07-1-1993
 SHEET NO. 07-01-01
 DRAWN/DATE AD 02/12
 NOT REVIEWED B. CASAGROSH
 PROJECT NO. 303L
 LOCATION
 303L MA 007 H13R OIR
 303L MA 007 H13R OIR
 303-A1203IN
 GMS
 303L

ADAMAN AND M.W.D. IRRIGATION DETAIL

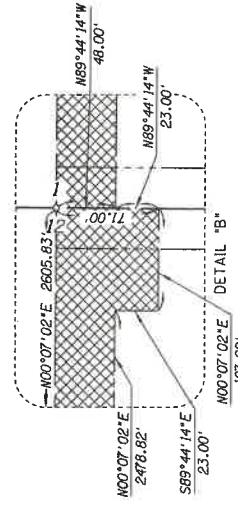


MARICOPA CO.

Section Corner
Maricopa County H.D. Brass
Cap In Handhole

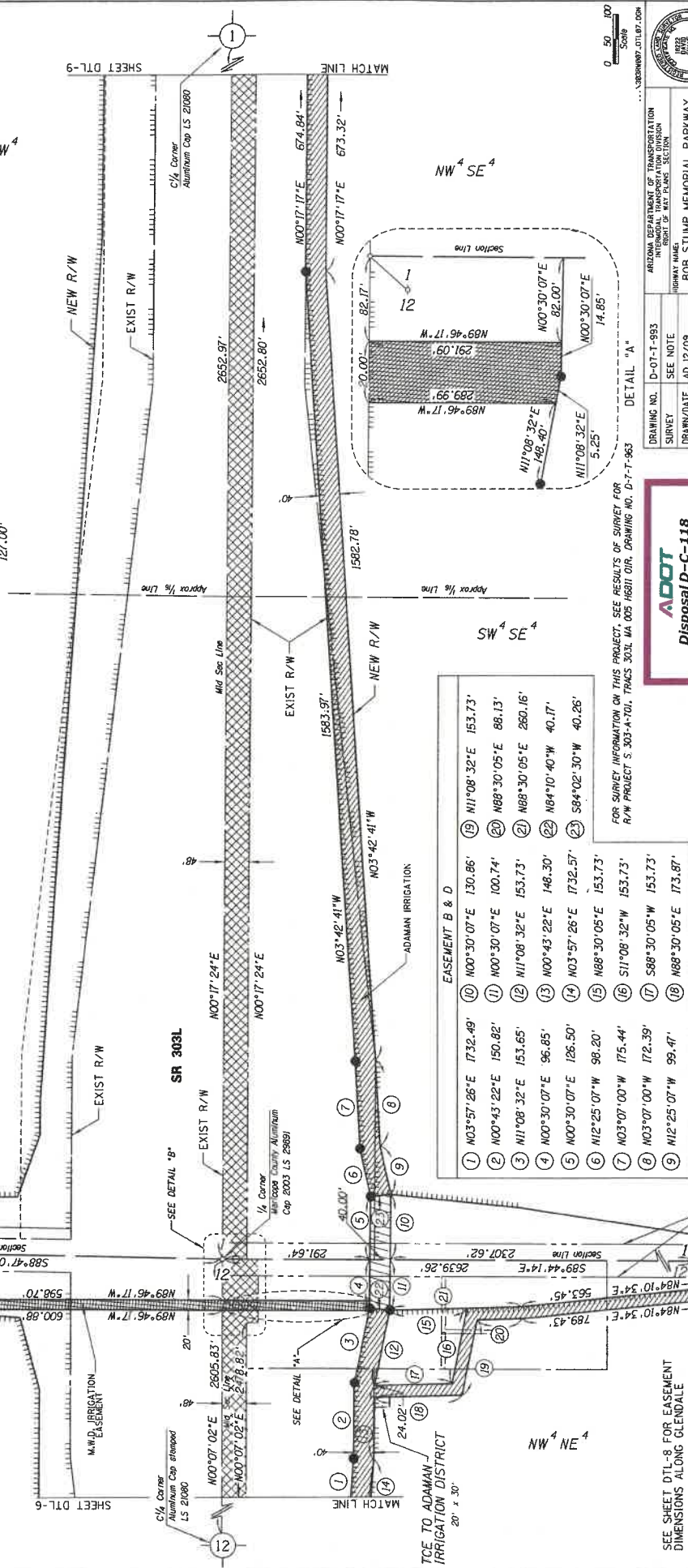
SEE SHEET DTL-8 FOR EASEMENT
DIMENSIONS ALONG GLENDALE

- ADAMAN IRRIGATION DISTRICT R/W TO BE EXCHANGED TO ADOT
- ADOT R/W TO BE EXCHANGED TO ADAMAN IRRIGATION DISTRICT
- M.W.D. EASEMENT (FUTURE)
- PERMIT WITH PRIOR RIGHTS TO BE APPLIED FOR BY ADAMAN IRRIGATION DISTRICT



SE⁴ SW⁴

NE⁴ NW⁴



EASEMENT B & D	
1	N03°57'26"E 1732.49'
2	N00°43'22"E 150.82'
3	N11°08'32"E 153.65'
4	N00°30'07"E 96.85'
5	N00°30'07"E 126.50'
6	N12°25'07"W 96.20'
7	N03°07'00"W 175.44'
8	N03°07'00"W 172.39'
9	N12°25'07"W 99.47'
10	N00°30'07"E 130.86'
11	N00°30'07"E 100.74'
12	N11°08'32"E 153.73'
13	N00°43'22"E 148.30'
14	N03°57'26"E 1732.57'
15	N88°30'05"E 153.73'
16	S11°08'32"W 153.73'
17	S88°30'05"W 153.73'
18	N88°30'05"E 173.87'
19	N11°08'32"E 153.73'
20	N88°30'05"E 88.13'
21	N88°30'05"E 260.16'
22	N84°10'40"W 40.17'
23	S84°02'30"W 40.26'

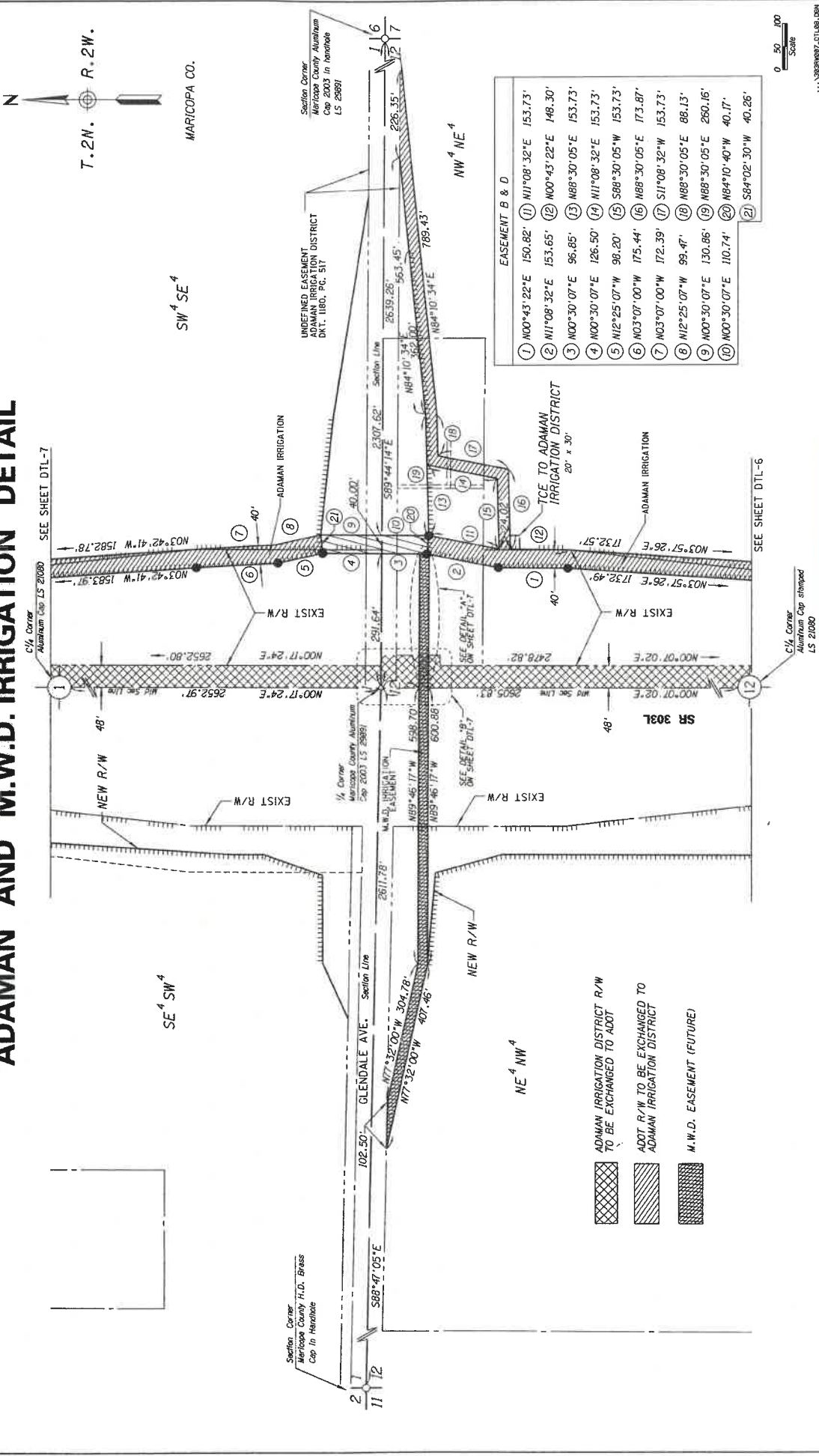
FOR SURVEY INFORMATION ON THIS PROJECT, SEE RESULTS OF SURVEY FOR R/W PROJECT S. 303-A-701, PAGES 303L MA 005 RIGHT OF WAY, DRAWING NO. D-7-T-963

ADOT
Disposal D-C-118
EXHIBIT "A"

DRAWING NO.	D-07-T-993
SURVEY	SEE NOTE
DRAWN/DATE	AD 12/09
ADDT REVIEW	D. CASDORPH
PROJECT NO.	303-AI209IN
ROUTE NO.	303L
LOCATION	Cameback Road - Olive Avenue

SR 303L
1/4 Corner Maricopa County Aluminum Cap 2003 LS 29891
1/4 Corner Maricopa County Aluminum Cap 2003 LS 29891
SECTION CORNER Maricopa County Aluminum Cap 2003 In Handhole LS 29891
C:\USERS\DAVID SHANE

ADAMAN AND M.W.D. IRRIGATION DETAIL



EASEMENT B & D

1	N00°43'22"E	150.82'	11	N11°08'32"E	153.73'
2	N11°08'32"E	153.65'	12	N00°43'22"E	148.30'
3	N00°30'07"E	96.85'	13	N88°30'05"E	153.73'
4	N00°30'07"E	126.50'	14	N11°08'32"E	153.73'
5	N12°25'07"W	96.20'	15	S88°30'05"W	153.73'
6	N03°07'00"W	175.44'	16	N88°30'05"E	173.87'
7	N03°07'00"W	172.39'	17	S11°08'32"W	153.73'
8	N12°25'07"W	99.47'	18	N88°30'05"E	88.13'
9	N00°30'07"E	130.86'	19	N88°30'05"E	260.16'
10	N00°30'07"E	110.74'	20	N84°10'40"W	40.17'
			21	S84°02'30"W	40.26'

DRAWING NO.	D-07-T-993	ARIZONA DEPARTMENT OF TRANSPORTATION
SURVEY	SEE NOTE	INTERNAL TRANSPORTATION DIVISION
DRAWN/DATE	AD 12/09	SECTION OF MULTIPURPOSE SECTION
ADOT REVIEW	D. CASDORPH	HIGHWAY NAME
		BOB STUMP MEMORIAL PARKWAY
		FEDERAL AID NO.
		303-AIZ09IN
		PROJECT NO.
		303L MA 007 HT138 02R
		ROUTE NO.
		303L
		LOCATION
		Cameback Road - Olive Avenue



FOR SURVEY INFORMATION ON THIS PROJECT, SEE RESULTS OF SURVEY FOR R/W PROJECT S 303-A-701, TRACS 303L MA 007 HB8101R, DRAWING NO. D-7-T-983

RIGHT OF WAY MONUMENTATION SURVEY

THIS SURVEY SUPPLEMENTS THE RESULTS OF SURVEY PROJECT NO. 303L MA 005 H6811 OIR FEDERAL AID NO. S 303-A-701 AS SHOWN ON SHEETS RS-18 TO RS-22

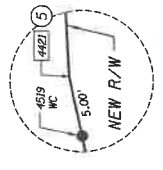
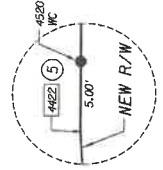
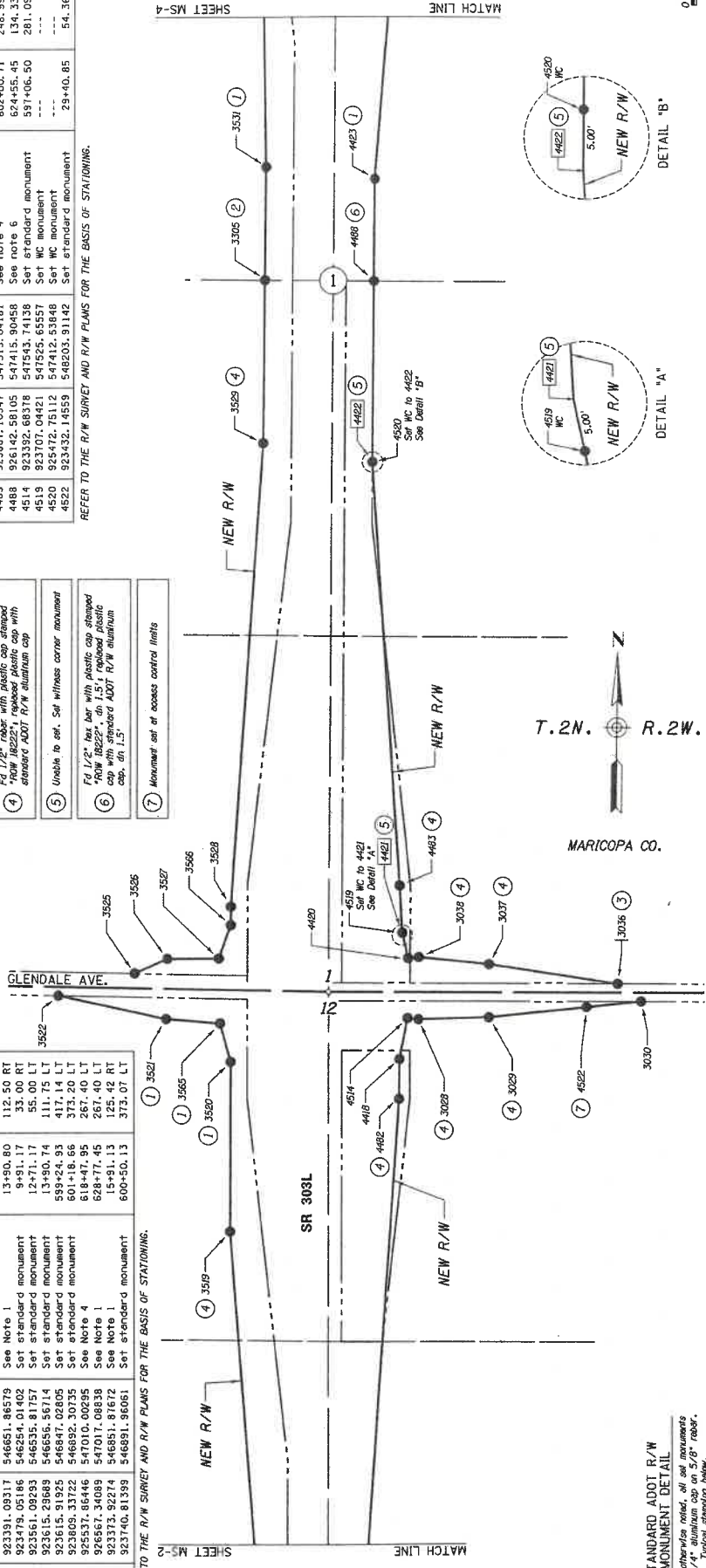
PT.	NORTHING	EASTING	DESCRIPTION	STATION	OFFSET
3028	923386.60861	547583.70721	See note 4	597+02.70	321.09 RT
3029	923285.54312	547843.37586	See note 4	597+00.99	32.00 RT
3030	923255.54138	548311.52309	Set standard monument	30+55.06	33.00 LT
3031	923158.98138	548311.52309	See note 3	30+55.06	33.00 LT
3032	923158.98138	547844.42578	See note 4	25+80.63	105.04 LT
3033	923260.20466	547585.73636	See note 4	599+34.30	321.52 RT
3034	923145.85054	547014.18745	See Note 2	624+55.95	267.40 LT
3035	922598.50888	546881.17024	See Note 4	589+07.83	369.00 LT
3036	922330.94431	546891.08934	See Note 1	595+40.27	370.43 LT
3037	922479.05186	546651.01402	Set standard monument	13+90.80	112.50 RT
3038	922391.09317	546851.81757	Set standard monument	9+91.17	33.00 RT
3039	922351.91925	546535.81757	Set standard monument	12+71.17	55.00 LT
3040	922361.51925	546847.02805	Set standard monument	13+90.74	111.75 LT
3041	922361.51925	546892.30735	Set standard monument	599+24.93	417.14 LT
3042	922361.51925	546892.30735	Set standard monument	601+18.66	373.20 LT
3043	922337.86446	547010.00295	See Note 4	624+55.95	267.40 LT
3044	922337.86446	547010.00295	See Note 4	624+55.95	267.40 LT
3045	923373.92594	546851.98122	See Note 1	15+81.13	125.42 LT
3046	923373.92594	546851.98122	See Note 1	15+81.13	125.42 LT
3047	923740.81559	546891.96061	Set standard monument	600+50.13	373.07 LT

REFER TO THE R/W SURVEY AND R/W PLANS FOR THE BASIS OF STATIONING.

1	Set PK nail with tag stamped "RLS 2702" in concrete
2	Ed 1/2" rebar with plastic cap stamped "RLS 2702" with standard ADOT R/W aluminum cap
3	Ed 1/2" rebar with plastic cap stamped "RLS 2702" with standard ADOT R/W aluminum cap
4	Ed 1/2" rebar with plastic cap stamped "RLS 2702" with standard ADOT R/W aluminum cap
5	Unusable to set. Set witness corner monument
6	Ed 1/2" rebar with plastic cap stamped "RLS 2702" with standard ADOT R/W aluminum cap with standard ADOT R/W aluminum cap on 1.5"
7	Monument set at access control limits

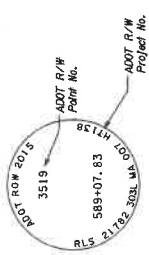
PT.	NORTHING	EASTING	DESCRIPTION	STATION	OFFSET
4118	923241.93145	547514.04951	Set standard monument	595+55.54	252.44 RT
4119	923241.93145	547514.04951	Set standard monument	595+55.54	252.44 RT
4120	923158.98138	547524.58031	(C) See note 5	600+25.60	259.73 RT
4121	923158.98138	547524.58031	(C) See note 5	600+25.60	259.73 RT
4122	923158.98138	547524.58031	(C) See note 5	600+25.60	259.73 RT
4123	923158.98138	547524.58031	(C) See note 5	600+25.60	259.73 RT
4124	923158.98138	547524.58031	(C) See note 5	600+25.60	259.73 RT
4125	923158.98138	547524.58031	(C) See note 5	600+25.60	259.73 RT
4126	923158.98138	547524.58031	(C) See note 5	600+25.60	259.73 RT
4127	923158.98138	547524.58031	(C) See note 5	600+25.60	259.73 RT
4128	923158.98138	547524.58031	(C) See note 5	600+25.60	259.73 RT
4129	923158.98138	547524.58031	(C) See note 5	600+25.60	259.73 RT
4130	923158.98138	547524.58031	(C) See note 5	600+25.60	259.73 RT
4131	923158.98138	547524.58031	(C) See note 5	600+25.60	259.73 RT
4132	923158.98138	547524.58031	(C) See note 5	600+25.60	259.73 RT
4133	923158.98138	547524.58031	(C) See note 5	600+25.60	259.73 RT
4134	923158.98138	547524.58031	(C) See note 5	600+25.60	259.73 RT
4135	923158.98138	547524.58031	(C) See note 5	600+25.60	259.73 RT
4136	923158.98138	547524.58031	(C) See note 5	600+25.60	259.73 RT
4137	923158.98138	547524.58031	(C) See note 5	600+25.60	259.73 RT
4138	923158.98138	547524.58031	(C) See note 5	600+25.60	259.73 RT
4139	923158.98138	547524.58031	(C) See note 5	600+25.60	259.73 RT
4140	923158.98138	547524.58031	(C) See note 5	600+25.60	259.73 RT
4141	923158.98138	547524.58031	(C) See note 5	600+25.60	259.73 RT
4142	923158.98138	547524.58031	(C) See note 5	600+25.60	259.73 RT
4143	923158.98138	547524.58031	(C) See note 5	600+25.60	259.73 RT
4144	923158.98138	547524.58031	(C) See note 5	600+25.60	259.73 RT
4145	923158.98138	547524.58031	(C) See note 5	600+25.60	259.73 RT
4146	923158.98138	547524.58031	(C) See note 5	600+25.60	259.73 RT
4147	923158.98138	547524.58031	(C) See note 5	600+25.60	259.73 RT
4148	923158.98138	547524.58031	(C) See note 5	600+25.60	259.73 RT
4149	923158.98138	547524.58031	(C) See note 5	600+25.60	259.73 RT
4150	923158.98138	547524.58031	(C) See note 5	600+25.60	259.73 RT
4151	923158.98138	547524.58031	(C) See note 5	600+25.60	259.73 RT
4152	923158.98138	547524.58031	(C) See note 5	600+25.60	259.73 RT
4153	923158.98138	547524.58031	(C) See note 5	600+25.60	259.73 RT
4154	923158.98138	547524.58031	(C) See note 5	600+25.60	259.73 RT
4155	923158.98138	547524.58031	(C) See note 5	600+25.60	259.73 RT
4156	923158.98138	547524.58031	(C) See note 5	600+25.60	259.73 RT
4157	923158.98138	547524.58031	(C) See note 5	600+25.60	259.73 RT
4158	923158.98138	547524.58031	(C) See note 5	600+25.60	259.73 RT
4159	923158.98138	547524.58031	(C) See note 5	600+25.60	259.73 RT
4160	923158.98138	547524.58031	(C) See note 5	600+25.60	259.73 RT
4161	923158.98138	547524.58031	(C) See note 5	600+25.60	259.73 RT
4162	923158.98138	547524.58031	(C) See note 5	600+25.60	259.73 RT
4163	923158.98138	547524.58031	(C) See note 5	600+25.60	259.73 RT
4164	923158.98138	547524.58031	(C) See note 5	600+25.60	259.73 RT
4165	923158.98138	547524.58031	(C) See note 5	600+25.60	259.73 RT
4166	923158.98138	547524.58031	(C) See note 5	600+25.60	259.73 RT
4167	923158.98138	547524.58031	(C) See note 5	600+25.60	259.73 RT
4168	923158.98138	547524.58031	(C) See note 5	600+25.60	259.73 RT
4169	923158.98138	547524.58031	(C) See note 5	600+25.60	259.73 RT
4170	923158.98138	547524.58031	(C) See note 5	600+25.60	259.73 RT
4171	923158.98138	547524.58031	(C) See note 5	600+25.60	259.73 RT
4172	923158.98138	547524.58031	(C) See note 5	600+25.60	259.73 RT
4173	923158.98138	547524.58031	(C) See note 5	600+25.60	259.73 RT
4174	923158.98138	547524.58031	(C) See note 5	600+25.60	259.73 RT
4175	923158.98138	547524.58031	(C) See note 5	600+25.60	259.73 RT
4176	923158.98138	547524.58031	(C) See note 5	600+25.60	259.73 RT
4177	923158.98138	547524.58031	(C) See note 5	600+25.60	259.73 RT
4178	923158.98138	547524.58031	(C) See note 5	600+25.60	259.73 RT
4179	923158.98138	547524.58031	(C) See note 5	600+25.60	259.73 RT
4180	923158.98138	547524.58031	(C) See note 5	600+25.60	259.73 RT
4181	923158.98138	547524.58031	(C) See note 5	600+25.60	259.73 RT
4182	923158.98138	547524.58031	(C) See note 5	600+25.60	259.73 RT
4183	923158.98138	547524.58031	(C) See note 5	600+25.60	259.73 RT
4184	923158.98138	547524.58031	(C) See note 5	600+25.60	259.73 RT
4185	923158.98138	547524.58031	(C) See note 5	600+25.60	259.73 RT
4186	923158.98138	547524.58031	(C) See note 5	600+25.60	259.73 RT
4187	923158.98138	547524.58031	(C) See note 5	600+25.60	259.73 RT
4188	923158.98138	547524.58031	(C) See note 5	600+25.60	259.73 RT
4189	923158.98138	547524.58031	(C) See note 5	600+25.60	259.73 RT
4190	923158.98138	547524.58031	(C) See note 5	600+25.60	259.73 RT
4191	923158.98138	547524.58031	(C) See note 5	600+25.60	259.73 RT
4192	923158.98138	547524.58031	(C) See note 5	600+25.60	259.73 RT
4193	923158.98138	547524.58031	(C) See note 5	600+25.60	259.73 RT
4194	923158.98138	547524.58031	(C) See note 5	600+25.60	259.73 RT
4195	923158.98138	547524.58031	(C) See note 5	600+25.60	259.73 RT
4196	923158.98138	547524.58031	(C) See note 5	600+25.60	259.73 RT
4197	923158.98138	547524.58031	(C) See note 5	600+25.60	259.73 RT
4198	923158.98138	547524.58031	(C) See note 5	600+25.60	259.73 RT
4199	923158.98138	547524.58031	(C) See note 5	600+25.60	259.73 RT
4200	923158.98138	547524.58031	(C) See note 5	600+25.60	259.73 RT

REFER TO THE R/W SURVEY AND R/W PLANS FOR THE BASIS OF STATIONING.



ADOT
Disposal D-C-118
EXHIBIT "A"

- LEGEND**
- 302 Set Monument
 - 300 Found Monument
 - 307 Calculated position
 - 307 Existing ADOT R/W monument
 - New R/W monument



DRAWING NO.	DATE	BY	FOR	PROJECT NO.	LOCATION
D-07-T-993	MAR 2015	ROC/MAR 2015	D. CASDORPH	303-A-701	Cameback Road - OIRvs Avenue
ARIZONA DEPARTMENT OF TRANSPORTATION DIVISION OF HIGHWAYS DIVISION OF MAPS & PLANS SECTION PROJECT NO. 303-A-701 PROJECT NAME: 303L MA 007 H713B OIR PROJECT LOCATION: 303L MA 007 H713B OIR PROJECT NO. 303L MA 007 H713B OIR PROJECT LOCATION: 303L MA 007 H713B OIR					

