



# Water Exchange Agreement with the City of Goodyear

August 13, 2024





# Presentation Overview

---

## For Information and Discussion:

- Review of Glendale's and Goodyear's Colorado River supplies
- Description of the Exchange Agreement between Glendale and Goodyear
- Benefits and limitations of the exchange
- Next steps



# Glendale's Colorado River Supplies



## Colorado River water via the Central Arizona Project (CAP):

- Glendale's total Colorado River supplies is 22,582 acre-feet/year.
- CAP Canal feeds directly into the Pyramid Peak Water Treatment Plant.
- Uses gravity to convey treated water to customers (low energy use).
- Used primarily on non-SRP lands but can be used throughout Glendale.



# Goodyear's Colorado River Supplies

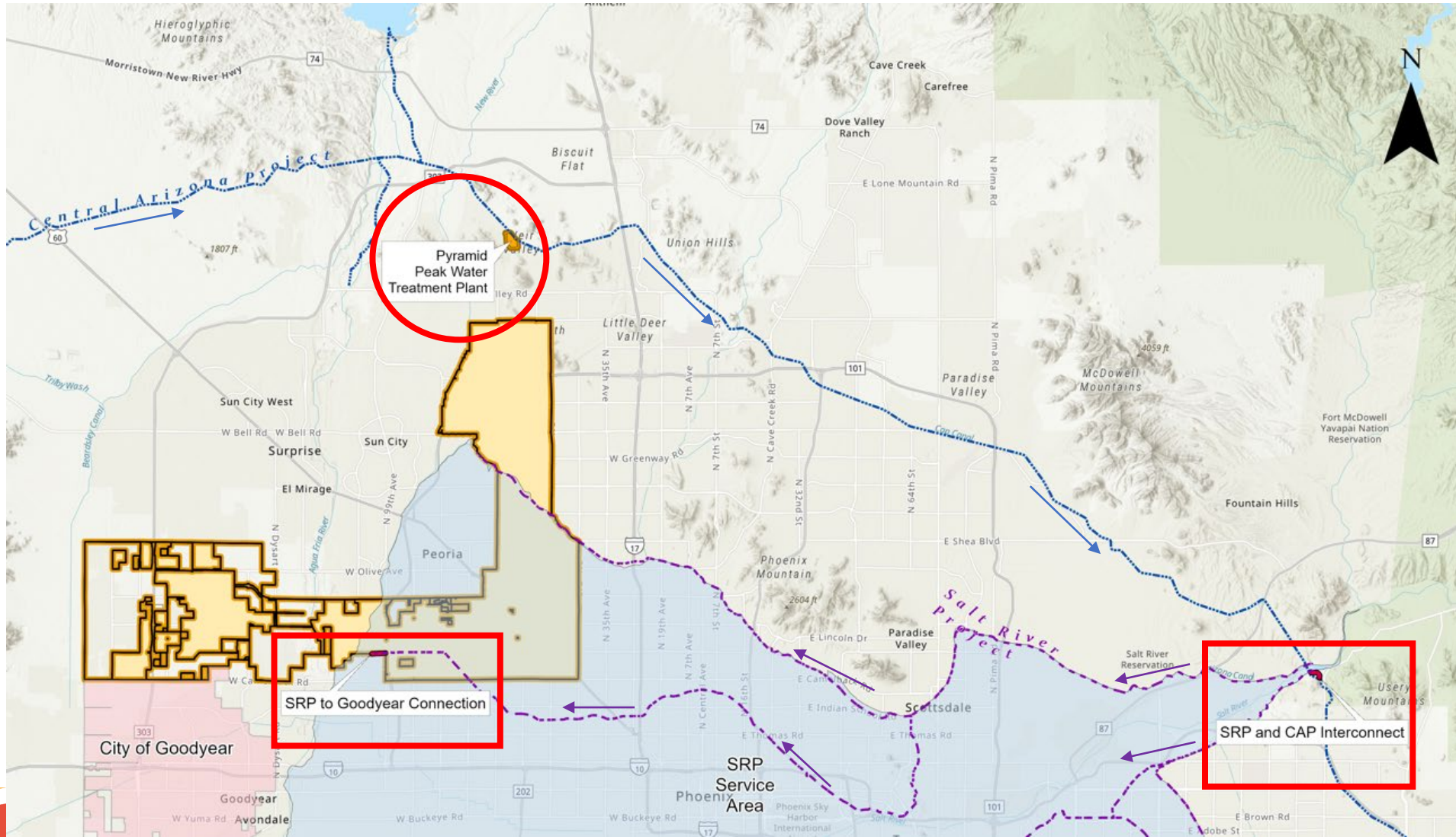
---

## Colorado River water via the CAP:

- Goodyear's total Colorado River supplies is 17,742 acre-feet/year.
- Transferred from the CAP Canal into the SRP Canal System.
  - Goodyear pays a lease fee to SRP to use the CAP/SRP Interconnect Facility (CSIF) to divert CAP water into the SRP system.
  - Goodyear's CAP water flows past Glendale's Pyramid Peak WTP on its way to the CSIF.
  - Goodyear's CAP water is conveyed through the SRP system (Grand Canal and lateral canals) to Goodyear's infrastructure.



# CAP Canal and SRP Canals





# Water Supplies to be Exchanged

- Exchanging Glendale's SRP water supplies for CAP water.
  - Glendale's SRP supplies include:
    - Association water (for use in SRP's Service Area)
    - New Conservation Space (NCS) Water - maximum of 27,250 acre-feet stored in Roosevelt Lake (not restricted to SRP's Service Area)
    - Flood Control Space (FCS) Water - maximum of 5,600 acre-feet from Roosevelt Lake occurring in excellent run-off years (not restricted to SRP's Service Area)
  - Goodyear's Colorado River supply:
    - Municipal & Industrial Priority
- Exchange volume of up to 8,500 acre-feet/year for 10 years



# How the Exchange Would Work

Glendale and Goodyear agree to volume of water for exchange for upcoming calendar year (up to 8,500 acre-feet/year)

Goodyear orders CAP water for delivery to Pyramid Peak WTP for Glendale's use;

Glendale orders its water (Association, NCS, FCS) to be delivered to Goodyear via SRP system

Goodyear receives its water at the same location and volume as it does today;

Glendale reimburses Goodyear for a portion of Goodyear's CSIF lease fee



# Benefits and Limitations

---

## Benefits

- Short-term solution when CAP shortages occur
- Transfers water supplies to the north portion of the City where it will be needed
- No capital investment; use existing infrastructure
- Use to support System Conservation Agreement in 2024 and 2025

## Limitations

- Does not work under total loss of Colorado River supplies
- There are limits to the available amounts of NCS and FCS waters.



# Financial Impact

---

- Estimated cost to Glendale is less than \$200,000/year
  - \$113,013 in 2024; estimated \$187,947 in 2033
- Potential energy and treatment savings for Glendale: \$800,000/year
- Net impact: Savings of \$600,000



## Next Steps

---

- Intergovernmental Agreement (IGA) with Goodyear at tonight's Council meeting.
- Working with CAP on an Implementation Agreement (IA) to coordinate water delivery.
- Submit IGA and IA to the Bureau of Reclamation for approval.
- Working with the Arizona Department of Water Resources for a Water Exchange Permit.



# Questions?

